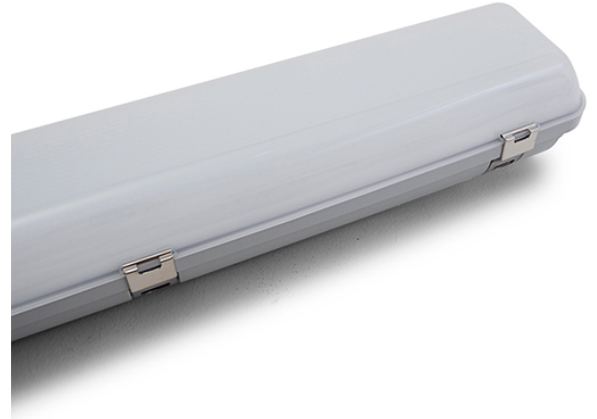


# EV-UMBRA-PRO-IP65-600-EM

Professional IP65 Weatherproof Batten

## FEATURES

- Power monitoring (DT51)
- Tuneable white (DT8-Tc) controlled by DALI
- Flicker-free dimming controlled by DALI
- IP65 weatherproof rating and IK08 impact rating
- LED Lifetime >120,000 hours
- 10 Years Design Life at max. ambient
- Self-test (AS2293/IEC62034)
- DALI (IEC62386)
- Emergency models fully compliant (AS/NZS 2293.3)
- Soft-start charger to reduce building load
- High Quality Lithium battery (LiFePO4) and smart charger included with emergency models



MECHANICAL	
Body Material	Polycarbonate
Diffuser Material	Polycarbonate
Fitting Colour	Grey
IK Rating	IK08
Installation Type	Surface mount
IP Rating	IP65

ELECTRICAL	
Electrical Rating	Class I
Input Frequency	50 Hz
Input voltage	230Vac
Maximum Wattage	20 W
Power Factor	0.95
Standby Power	0.3 W

Standby power for maintained emergency devices is measured when the light is on and the charger is in standby. Typically charging occurs for the first 16 hours after the device is powered or after a discharge. For non-maintained emergency devices or DALI controlled devices this is measured when the light is off and charger is in standby mode.

**Switch Type** Inbuilt Mains Rated DALI Switch

A Terminal input has been provided to allow the wiring of a Main rated switch input. This input can be programmed to switch any controlled area when using a DALI-2 compliant control system. This input supports IEC62386-301 (momentary or rocker switches), IEC62386-302 (on /off switches) and IEC62386-303 (mains rated sensor inputs).

**Working Temp Range** 0 to 40 °C

## LAMP

**Macadam Steps (SDCM)** 3-step MacAdam Ellipse

**CCT Configuration** TUNEABLE WHITE

Full support for DALI-2 DT8 has been provided which allows White colour control on a compliant DALI-2 control system. This function can be used to set a desired colour or to transition between colours depending on the time of day.

**CRI** >84

**Lamp/LED Current** 650 mA

**Lamp/LED voltage** 24 V

## LED LIFETIME

**LED Lifetime** >120000 hrs

This is the Reported LED Lifetime in Hours based on TM-21. Ektor does not list the projected or calculated LED lifetime, which is normally longer as TM-21 Addendum B explicitly states "The Calculated and Projected Lp(Dk) are not to be reported". This Lifetime refers to the life of a single LED however the system life is longer since the probability and binomial distribution of all LEDs in the system means that the average led is performing above the specification and compensates for the LEDs falling below.

Ambient Temp (°C)	25 °C	40 °C
<b>L90B10</b>	43000 hrs	43000 hrs
<b>L80B10</b>	90000 hrs	90000 hrs
<b>L70B10</b>	>120000 hrs	>120000 hrs
<b>L70B50</b>	>120000 hrs	>120000 hrs

This rating defines the performance of the led within its lifetime. L relates to lumen depreciation, where the proceeding number gives the resultant lumen output at the end of it reported lifetime. L70, would mean 70% lumen depreciation which means 30% of its initial output and is tested accordingly to TM-21. The B part refers to failures, which can be define as the percentage of LEDs which fall below the L value in the projected lifetime. A value of B10 refers



to 10% failure and a value of B50 refers to 50% failure. After the defined lifetime, the system will reach the defined lumen depreciation and the average led failures is defined by the B rating. The B rating is defined in and tested to IEC62717.

<b>TM-21 Test Hours</b>	20000 hrs
-------------------------	-----------

### COLOUR TEMPERATURE

<b>CCT</b>	3000K to 6500K
<b>CCT Colour</b>	Tunable White
<b>System Lumens</b>	>2000 lm

### DRIVER

<b>Dimmable</b>	Yes
<b>Driver Included</b>	Yes
<b>Integrated Driver</b>	No
<b>Driver Type</b>	DALI DT1 and DT8 Dimmable

Dimmable ~ Includes DALI-2 Driver with full support for DT1, DT6 and DT8-tc allowing flicker free dimming and colour control with compliant DALI-2 Application controllers.

DALI DT8 ~ Includes DALI-2 Driver with full support for DT6 and DT8-tc allowing flicker free dimming and colour control with compliant DALI-2 Application controllers.

<b>Power Monitoring</b>	DALI Device type 51 power monitoring
-------------------------	--------------------------------------

Inbuilt DALI-2 support for Device type 51 - Power monitoring for use with DALI-2 compliant control systems which allows the reporting of the products total power consumption for power aggregation and measurements.

<b>Wiring Type</b>	Re-wireable terminal block (6 pin)
--------------------	------------------------------------

### EMERGENCY (EM SUFFIX)

<b>Replacement Battery Code</b>	01302
<b>Emergency Classification</b>	C0:D40, C90:D32
<b>Emergency Control</b>	DALI Monitored (DT1)

DALI Monitored ~ Supports Emergency test and monitoring over DALI (IEC62386) with full compliance to IEC62386-202.

<b>Emergency Duration</b>	90 mins
---------------------------	---------

<b>Emergency Mode</b>	Maintained
-----------------------	------------

### COMPLIANCE

<b>Product Design Life</b>	100000 hrs
----------------------------	------------

The product design life relates to the total product life which includes LEDs, drivers and the enclosure. This is different to the LED lifetime which only refers to the lifetime of the LEDs. The product design life is calculated at the maximum ambient or working temperature of the product and takes into account the Maximum Daily Use.

<b>Standards</b>	AS/NZS 60598.1 AS 60598.2.22 AS/NZS 61347.1 AS/NZS 61347.2.13 AS CISPR 15 AS/NZS 2293.3
------------------	--

### WARRANTY

<b>Commercial Use Warranty</b>	2 Onsite, 3 RTB (Total 5 Years)
--------------------------------	---------------------------------

This product is covered with our extended commercial use warranty, which covers the product for up to 5-years. The first 2-years of the warranty is provided onsite within our terms and conditions and the remaining 3-year period is covered by a return to base warranty.

### DIMENSIONS

<b>Product Height</b>	93 mm
<b>Product Length</b>	650 mm
<b>Product Width</b>	130 mm

### ORDERING INFORMATION

<b>Order code</b>	12089
<b>Description</b>	UMBRA PRO 600mm Weatherproof LED Emergency batten
<b>Item Code</b>	EV-UMBRA-PRO-IP65-600-EM

### LINE DRAWINGS

EV/UMBRA/PRO/IP65

