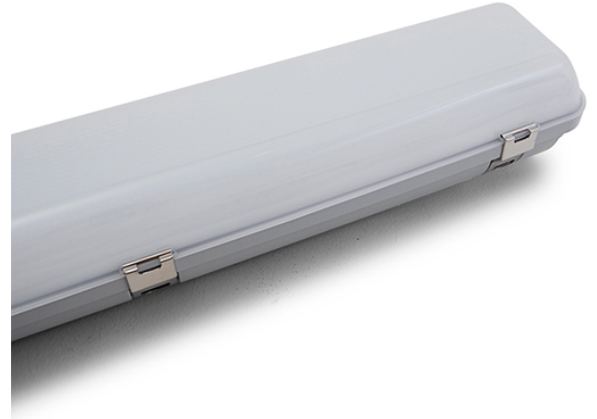


EV-UMBRA-PRO-IP65-600-EM-LK

Professional IP65 Weatherproof Batten

FEATURES

- Power monitoring (DT51)
- Tuneable white (DT8-Tc) controlled by DALI
- Flicker-free dimming controlled by DALI
- IP65 weatherproof rating and IK08 impact rating
- LED Lifetime >120,000 hours
- 10 Years Design Life at max. ambient
- Self-test (AS2293/IEC62034)
- DALI (IEC62386)
- Emergency models fully compliant (AS/NZS 2293.3)
- Soft-start charger to reduce building load
- High Quality Lithium battery (LiFePO4) and smart charger included with emergency models



MECHANICAL	
Body Material	Polycarbonate
Diffuser Material	Polycarbonate
Fitting Colour	Grey
IK Rating	IK08
Installation Type	Surface mount
IP Rating	IP65

ELECTRICAL	
Electrical Rating	Class I
Input Frequency	50 Hz
Input voltage	230Vac
Maximum Wattage	20 W
Power Factor	0.95
Standby Power	0.3 W

In Australia the Input voltage is defined as 230Vac -6%/+10%. This effectively means that the voltage range of these products are 216Vac - 253Vac or 240V +6%

Standby power for maintained emergency devices is measured when the light is on and the charger is in standby. Typically charging occurs for the first 16 hours after the device is powered or after a discharge. For non-maintained emergency devices or DALI controlled devices this is measured when the light is off and charger is in standby mode.

Switch Type Inbuilt Mains Rated DALI Switch

A Terminal input has been provided to allow the wiring of a Main rated switch input. This input can be programmed to switch any controlled area when using a DALI-2 compliant control system. This input supports IEC62386-301 (momentary or rocker switches), IEC62386-302 (on /off switches) and IEC62386-303 (mains rated sensor inputs).

Working Temp Range 0 to 40 °C

LAMP	
Macadam Steps (SDCM)	3-step MacAdam Ellipse
CCT Configuration	TUNEABLE WHITE
CRI	>84
Lamp/LED Current	650 mA
Lamp/LED voltage	24 V

LED LIFETIME		
LED Lifetime	>120000 hrs	
This is the Reported LED Lifetime in Hours based on TM-21. Ektor does not list the projected or calculated LED lifetime, which is normally longer as TM-21 Addendum B explicitly states "The Calculated and Projected Lp(Dk) are not to be reported". This Lifetime refers to the life of a single LED however the system life is longer since the probability and binomial distribution of all LEDs in the system means that the average led is performing above the specification and compensates for the LEDs falling below.		
Ambient Temp (°C)	25 °C	40 °C
L90B10	43000 hrs	43000 hrs
L80B10	90000 hrs	90000 hrs
L70B10	>120000 hrs	>120000 hrs
L70B50	>120000 hrs	>120000 hrs

This rating defines the performance of the led within its lifetime. L relates to lumen depreciation, where the proceeding number gives the resultant lumen output at the end of it reported lifetime. L70, would mean 70% lumen depreciation which means 30% of its initial output and is tested accordingly to TM-21. The B part refers to failures, which can be define as the percentage of LEDs which fall below the L value in the projected lifetime. A value of B10 refers



to 10% failure and a value of B50 refers to 50% failure. After the defined lifetime, the system will reach the defined lumen depreciation and the average led failures is defined by the B rating. The B rating is defined in and tested to IEC62717.

TM-21 Test Hours	20000 hrs
-------------------------	-----------

COLOUR TEMPERATURE

CCT	3000K to 6500K
CCT Colour	Tunable White
System Lumens	>2000 lm

DRIVER

Dimmable	Yes
Driver Included	Yes
Integrated Driver	No
Driver Type	Wireless (IEC62386-104) with DT1 & DT8 Dimmable

Wireless ~ Includes Wireless Driver with full support for DT6 and DT8-tc allowing flicker free dimming and colour control with compliant IEC62386-104 Application controllers.

Power Monitoring	DALI Device type 51 power monitoring
-------------------------	--------------------------------------

Inbuilt DALI-2 support for Device type 51 - Power monitoring for use with DALI-2 compliant control systems which allows the reporting of the products total power consumption for power aggregation and measurements.

Wiring Type	Re-wireable terminal block (6 pin)
--------------------	------------------------------------

EMERGENCY (EM SUFFIX)

Replacement Battery Code	01302
Emergency Classification	C0:D40, C90:D32
Emergency Control	IEC62386-104 (Wireless DT1)
IEC62386-104 ~ Supports wireless test and monitoring over IEC62386-104 using IEC62386-202.	
Emergency Duration	90 mins
Emergency Mode	Maintained

COMPLIANCE

Product Design Life	100000 hrs
----------------------------	------------

The product design life relates to the total product life which includes LEDs, drivers and the enclosure. This is different to the LED lifetime which only refers to the lifetime of the LEDs. The product design life is calculated at the maximum ambient or working temperature of the product and takes into account the Maximum Daily Use.

Standards	AS/NZS 60598.1 AS 60598.2.22 AS/NZS 61347.1 AS/NZS 61347.2.13 AS CISPR 15
------------------	---

AS/NZS 2293.3

WARRANTY

Commercial Use Warranty	2 Onsite, 3 RTB (Total 5 Years)
--------------------------------	---------------------------------

This product is covered with our extended commercial use warranty, which covers the product for up to 5-years. The first 2-years of the warranty is provided onsite within our terms and conditions and the remaining 3-year period is covered by a return to base warranty.

DIMENSIONS

Product Height	93 mm
Product Length	650 mm
Product Width	130 mm

ORDERING INFORMATION

Order code	12611
Description	Ektor Lynk Umbra 600mm LED IP65 Emergency batten- PRO w/wireless
Item Code	EV-UMBRA-PRO-IP65-600-EM-LK

LINE DRAWINGS

EV/UMBRA/PRO/IP65

