

WIFI Antenna (2520F)

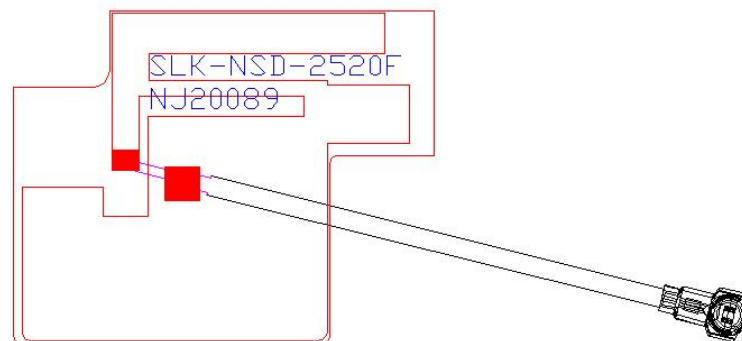
Shenzhen Yi Sheng Bang technology Co., LTD

Add: 101, Building C, Shenzhen Hard Science and Technology
Industrial Park, Bao 'an District, Shenzhen

1. Explanation of Product number :

S L K - N S D - 2 5 2 0 F - R - 1 2 0 I V - G

1 2 3 4 5



2. Features

- *Stable and reliable in performances
- *Compact size
- *RoHS compliance

3. Applications

- * IEEE802.11 (a/b/g/n)
- * Hand-held devices when WIFI (802.11a/b/g/n) functions are needed

4. Description

Holy bond's FPC antenna series are specially designed for WIFI (802.11a/b/g/n) applications. Based on Holy bond's proprietary design and processes, this FPC antenna has excellent stability and sensitivity to consistently provide high signal reception efficiency.

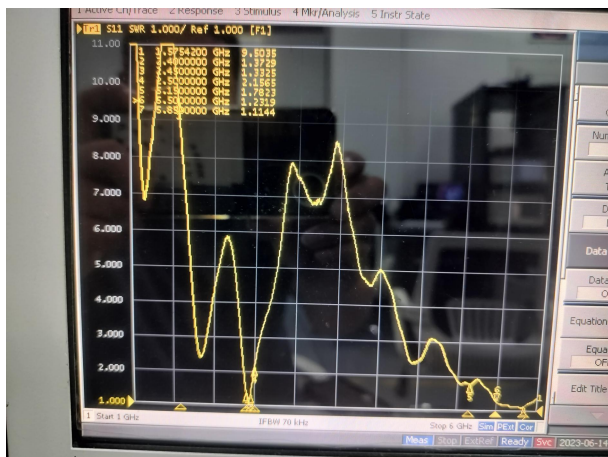
5. Electrical Specifications

5-1

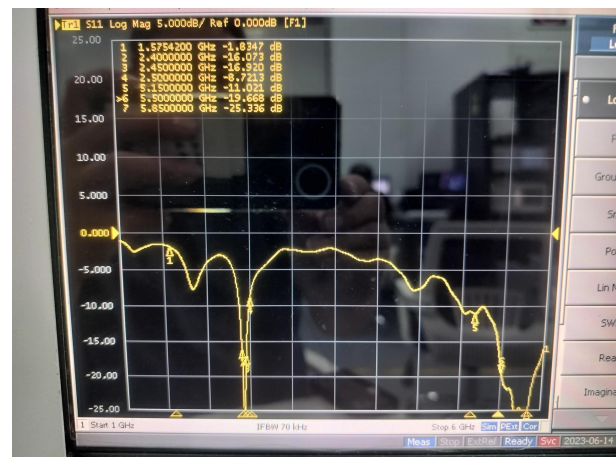
Characteristics	Specifications	Unit
Outline Dimensions	25.43x20.09x 0.12	mm
Center Frequency	2.4-2.5-5.15-5.850	GHz
Bandwidth(under-10dB return loss)	130min	MHz
VSWR	3max	

5-2.

VSWR

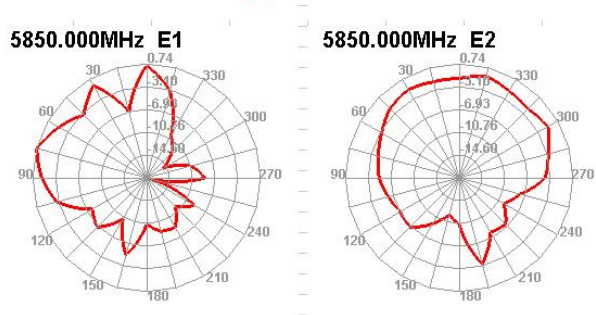
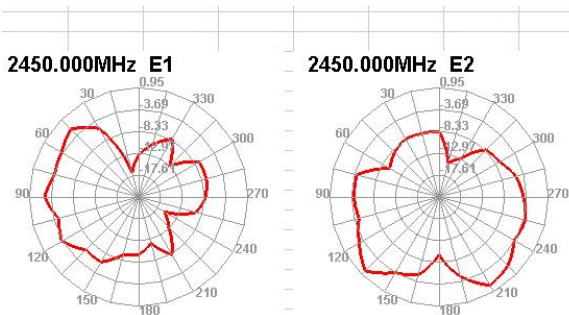
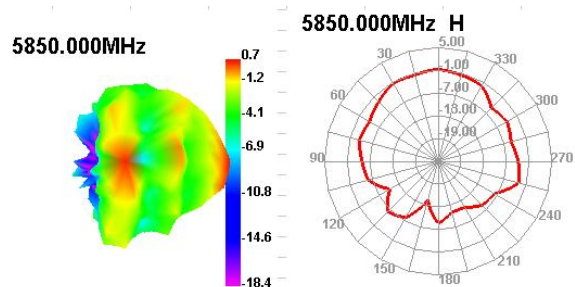
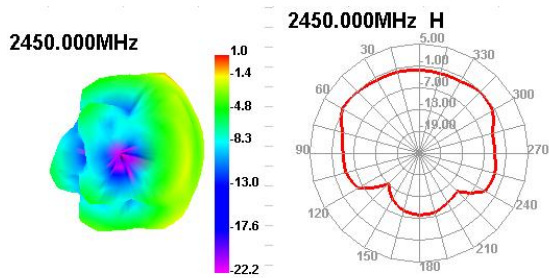


S11



5-3.WIFI Antenna Gain/Efficiency/Radiation Pattern of 3D

Freq (MHz)	Effi (%)	Effi (dB)	Gain (dBi)
2400	34.07	-4.68	1.4
2410	37.45	-4.27	1.02
2420	36.97	-4.32	1.21
2430	36.95	-4.32	1.36
2440	35.23	-4.53	1.18
2450	34.72	-4.59	0.95
2460	36.36	-4.39	1.1
2470	36.37	-4.39	0.98
2480	37.69	-4.24	1.11
2490	38.57	-4.14	1.29
2500	40.52	-3.92	1.42
5150	33.51	-4.75	2.1
5350	33.24	-4.78	0.53
5550	34.39	-4.64	0.69
5750	36.67	-4.36	1.12
5850	34.11	-4.67	0.74



6. Antenna Dimensions (unit: mm)

