



BEVERAGE-AIR

MARKETMAX[®] IQ

Merchandisers with
Electronic Smart Lock Feature

Detects power loss or temperature failure, and automatically locks the unit.



Sleek design

Keeps unattended merchandisers secure in your micro-market

NAMA certified, UL & NSF compliant

Secures temperature-sensitive products for worry-free operation

Automatically locks when power loss or temperature drop is sensed
Unlocks automatically if outage is less than 30 minutes

LED indicator to quickly view status
Flashes to indicate if protection event occurs

Easy-access test switch for health inspectors

Built-in safety feature allows escape in case of accidental lock-in

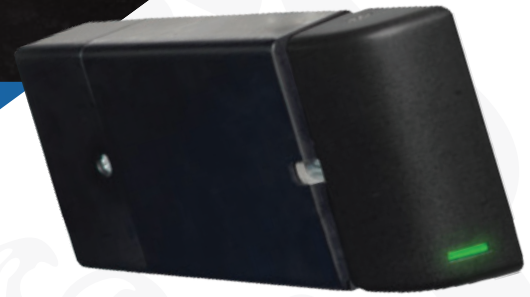
Optional features such as remote monitoring, fault alerts, and remote unlocking can be added using FreshTraq.com

888-845-9800 beverage-air.com

MARKETMAX[®] IQ

Merchandisers with Electronic Smart Lock Feature

Detects power loss or temperature failure, and automatically locks the unit.



REFRIGERATORS

MAINTAINS PRODUCT TEMPERATURES OF 36-38°F.

MODEL WIDTH	DOOR TYPE	MODEL #	DOORS/SHELVES	VOLTS	HP	AMPS	CUBIC FEET	WIDTH	DEPTH	HEIGHT	CRATED WEIGHT	COLOR	LIST PRICE
24" 1 DOOR	HINGED	MMR12HC-1-B-IQ	1/4	115	1/6	2	12.06	24.125	25.75	62	291	BLACK	\$9,250
		MMR12HC-1-W-IQ										WHITE	
27" 1 DOOR	HINGED	MMR23HC-1-B-IQ	1/5	115	1/4	3	23.1	27	33.63	78	358	BLACK	\$10,737
		MMR23HC-1-W-IQ										WHITE	
30" 1 DOOR	HINGED	MMR27HC-1-B-IQ	1/5	115	1/4	3	25.88	30	33.63	78	382	BLACK	\$11,421
		MMR27HC-1-W-IQ										WHITE	
47" 2 DOORS	HINGED	MMR44HC-1-B-IQ	2/10	115	1/3	5	40.2	47	33.63	78	544	BLACK	\$15,689
		MMR44HC-1-W-IQ										WHITE	
52" 2 DOORS	HINGED	MMR49HC-1-B-IQ	2/10	115	1/3	5	46.15	52	33.63	78	584	BLACK	\$16,171
		MMR49HC-1-W-IQ										WHITE	

Depth measurement includes handles.

FREEZERS

UTILIZES EXPANSION VALVE TECHNOLOGY TO MAINTAIN TEMPERATURE OF 0° TO -10°F.

MODEL WIDTH	DOOR TYPE	MODEL #	DOORS/SHELVES	VOLTS	HP	AMPS	CUBIC FEET	WIDTH	DEPTH	HEIGHT	CRATED WEIGHT	COLOR	LIST PRICE
24" 1 DOOR	HINGED	MMF12HC-1-B-IQ	1/4	115	1/2	5	11.9	24.125	25.75	62	291	BLACK	\$13,075
		MMF12HC-1-W-IQ										WHITE	
27" 1 DOOR	HINGED	MMF23HC-1-B-IQ	1/4	115	3/4	7.5	22.5	27	33.63	78	416	BLACK	\$16,544
		MMF23HC-1-W-IQ										WHITE	
30" 1 DOOR	HINGED	MMF27HC-1-B-IQ	1/4	115	3/4	7.5	26.57	30	33.63	78	427	BLACK	\$17,917
		MMF27HC-1-W-IQ										WHITE	
47" 2 DOORS	HINGED	MMF44HC-1-B-IQ	2/10	115	3/4	13.8	45	47	33.63	78	568	BLACK	\$23,554
		MMF44HC-1-W-IQ										WHITE	
52" 2 DOORS	HINGED	MMF49HC-1-B-IQ	2/10	115	3/4	11	46.2	52	33.63	78	596	BLACK	\$24,054
		MMF49HC-1-W-IQ										WHITE	

*Freezers powered by 115/208-230 volts are designed for field wiring (requires 4-wire electrical circuit, hard-wired).

Depth measurement includes handles.

EXTERIOR FINISHES

- Black
- White
- Stainless steel

INTERIOR FINISHES

- Black
- White
- Stainless steel

AVAILABLE OPTIONS

- Left hand hinge doors
- Remote models available
- Header signs

MOUNTING OPTIONS

- 6" casters
- 6" legs
- 3" casters



BEVERAGE-AIR

888-845-9800 beverage-air.com

MMIQ1S-20200407

an Ali Group Company



The Spirit of Excellence