

# User Manual

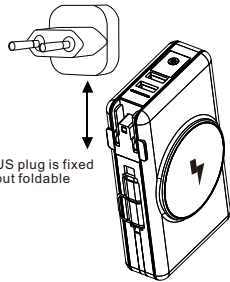
## 5 IN 1 SUPER CHARGER

### Specification

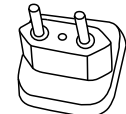
Capacity:20000mAh 3.85V 77Wh ±5%  
 Input:100-240V~50/60Hz 0.5A Type-C Cable PD 5V≡3A/9V≡2A/12V≡1.5A  
 Charger mode Output:5V≡3A(Total)  
 Power bank Output:  
 Type-C & Lightning Cable PD/PPS 5V≡2.4A/9V≡2.22A/12V≡1.67A(20W)  
 2xUSB Output:4.5V≡5A/5V≡4.5A/9V≡2A/12V≡1.5A(22.5W)  
 MagSafe Wireless Output:15W/10W/7.5W/5W  
 Total Output: Cable+2xUSB+Wireless:5V≡4.5A(22.5W)  
 Size:125x72x33mm  
 Weight:400g

### Using the adapters

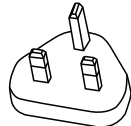
1. UK/EU/AU adapters:Attach the appropriate adapter to the charging base/US adapter:pull the adspster out from the charging base then plug into plug socket and switch on the power.
- 2.Insert your USB cable into one of the USB ports and connect to your device.
- 3.The light will turn blue for a moment and theh turn green again to confirm that it's charging.



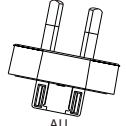
US plug is fixed but foldable



EU/KR



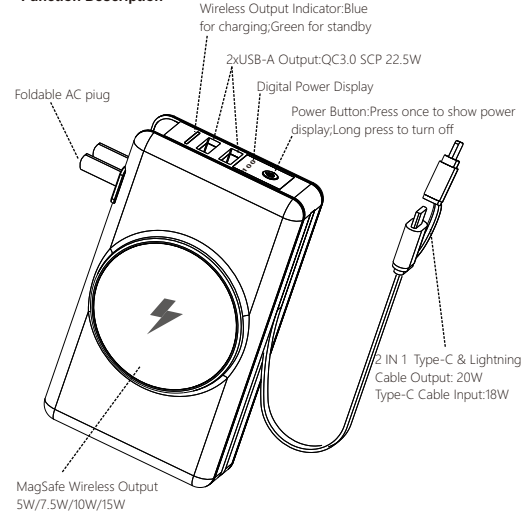
UK



AU

Optional Plug for Global Travel  
 ( US plug is standard in the package, more EU/AU/UK plug need additional cost if you need them.)

### Function Description



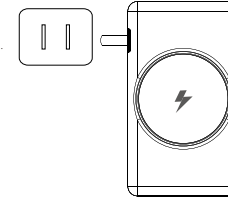
- Switch**  
Press it once to turn on USB output and wireless charging output. It automatically turns off in 30 seconds under no-load status.
- Charging**  
The LED digital power display blinks while charging. It shows 100 after fully charged.
- Wireless Charging**  
Make sure your phone is equipped with Qi wireless charging receiver, otherwise, an additional wireless charging receiver is needed to install with your phone.

### Working Mode

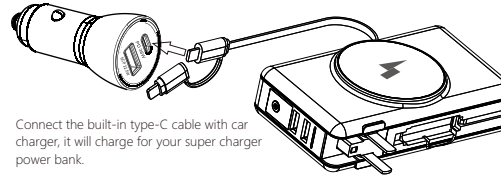
- Dis-Charging:**
- \* Qi wireless charging is 7.5W/10W/15W fast charge while using Qi only, it becomes 5W when more USB output is used simultaneously.
  - \* Power Delivery (PD) is 20W max while using Type-C & Lightning Cable output only, it becomes common 5V 4.5A max when either Qi wireless charging or USB-A output is used simultaneously. Three outputs intelligently distribute the current.
- Charging:**
- \* It's 5V 3A when using AC plug charging mode, charging time is about 5.5 hours.
  - \* Support pass-through charging, Type-C & USB-A output is 5V and intelligent current.

### AC Charge For Power Bank

Insert the plug into the socket, and the power bank will be charged.

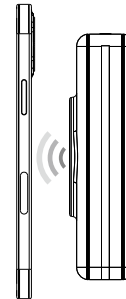


### Car Charge For Power Bank



Connect the built-in type-C cable with car charger, it will charge for your super charger power bank.

### Charge through the wireless charging function

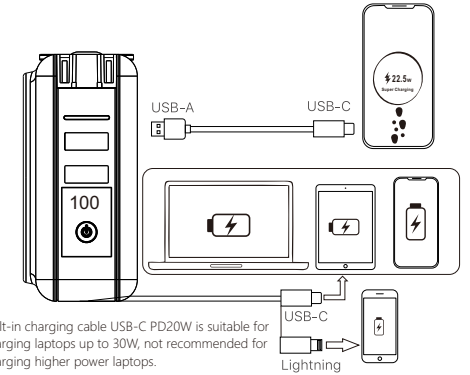


Put the Qi enabled mobile devices on the super charger, it will charge for your devices after turn on the power switch. It supports MagSafe charging for latest phones like iPhone 12 and 13.

**Attention!** When using the built-in cable charging, you cannot put the phone on the wireless charging area, otherwise it turns to slow charging.

### Use super charge to charge other devices

Connect your mobile device with the built-in charging cable, press the power button and the Super Charger starts charging your device.

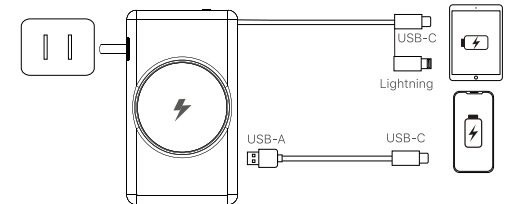


Built-in charging cable USB-C PD20W is suitable for charging laptops up to 30W, not recommended for charging higher power laptops.

**Attention!** When the iPhone is quickly charged to 80%, it will automatically switch to slow charging mode without current. The power bank will automatically shut down and you need to press the switch again to keep charging the iPhone to 100%.

### AC Charge devices through the adapter

Connect a charging cable and charge your mobile device directly. Press the power button and super charger starts to charge your devices.



This device complies with part 15 of the FCC Rules. Operation is subject to the following two conditions: (1) this device may not cause harmful interference, and (2) this device must accept any interference received, including interference that may cause undesired operation.

Any changes or modifications not expressly approved by the party responsible for compliance could void the user's authority to operate the equipment.

NOTE: This equipment has been tested and found to comply with the limits for a Class B digital device, pursuant to Part 15 of the FCC Rules. These limits are designed to provide reasonable protection against harmful interference in a residential installation. This equipment generates, uses and can radiate radio frequency energy and, if not installed and used in accordance with the instructions, may cause harmful interference to radio communications.

However, there is no guarantee that interference will not occur in a particular installation.

If this equipment does cause harmful interference to radio or television reception, which can be determined by turning the equipment off and on, the user is encouraged to try to correct the interference by one or more of the following measures:

- Reorient or relocate the receiving antenna.
- Increase the separation between the equipment and receiver.
- Connect the equipment into an outlet on a circuit different from that to which the receiver is connected.
- Consult the dealer or an experienced radio/TV technician for help.

The device has been evaluated to meet general RF exposure requirement. The device can be used in portable exposure condition without restriction