



MASTER GUIDE

CONTENTS

1. System & Hardware Requirements
2. Package Contents
3. Driver Installation
4. Configuring Your Razer DeathAdder
5. Using your Razer DeathAdder
6. Safety and Maintenance
7. Legalese



Congratulations on purchasing your very own Razer DeathAdder™, which inherits the same death-dealing edge as the revolutionary Razer Boomslang™ and the Razer Mamba™.

With all our gamers in mind, the Razer™ team of specialized engineers presents this perfect right-handed weapon with superb ergonomics and performance for you to strike the killing blow.

1. SYSTEM & HARDWARE REQUIREMENTS:

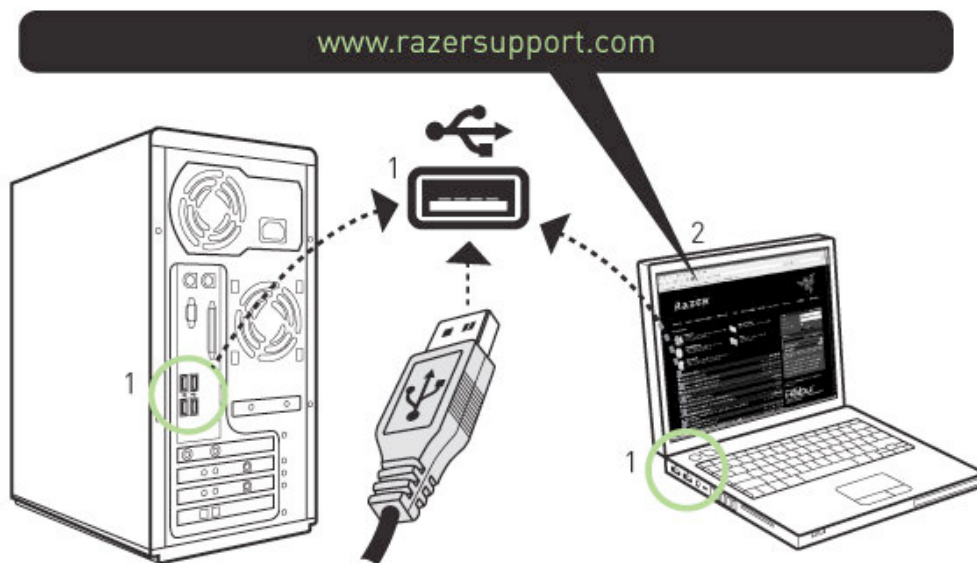
- ☐ PC/ Mac with USB port
- ☐ Windows XP / x64 / Vista / Vista64 or Mac OS X (v10.4 and above)
- ☐ Internet connection (for driver installation)
- ☐ 35MB of free hard disk space

2. PACKAGE CONTENTS

- ☐ Razer DeathAdder Gaming Mouse
- ☐ Certificate of Authenticity
- ☐ Quick Start Guide
- ☐ Master Guide

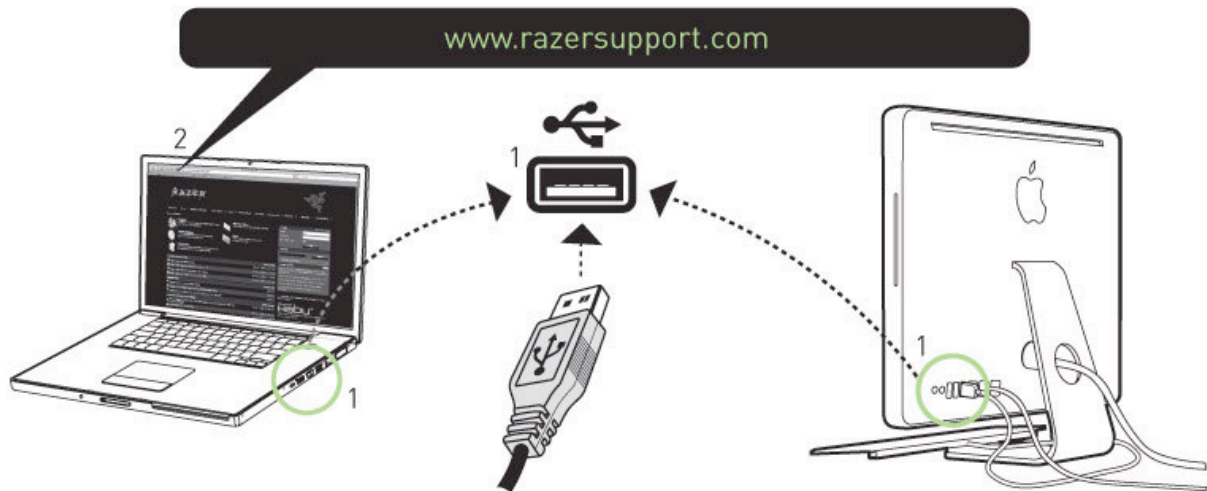
3. DRIVER INSTALLATION

Windows® XP / x64 / Vista / Vista64 Installation Instructions



1. Plug mouse into the USB port of your computer.
2. Download the Driver Installer from www.razersupport.com
3. Run the installer.
4. The Razer DeathAdder setup screen appears. Click NEXT.
5. Read the license agreement. Click YES if you accept all terms of the agreement.
6. Select the destination folder where the driver software will reside. Click NEXT.
7. Select the program folder for the Razer menu. Click NEXT.
8. Review your settings. Click NEXT and installation will begin.
9. At the end of the installation, follow the instructions onscreen to restart your computer. Click FINISH.

Mac OS X (v10.4 and above) installation instructions



1. Plug mouse into the USB port of your Mac.
2. Download the Driver Installer from www.razersupport.com
3. Run the installer.
4. The Razer DeathAdder introduction screen appears. Click CONTINUE.
5. Important information regarding the Razer DeathAdder driver is shown. Click CONTINUE after reading.
6. Read the software license agreement and click CONTINUE.
7. A confirmation popup screen will appear. Click AGREE if you accept all terms of the agreement.
8. If you want to choose the destination folder where the driver software will reside, click CHANGE INSTALL LOCATION. Otherwise, click INSTALL to begin installation.
9. At the end of the installation, follow the instructions onscreen to restart your computer. Click RESTART.

CONNECTING YOUR RAZER DEATHADDER™

1. Plug mouse into USB port and turn on system.
2. Download the driver Installer at www.razersupport.com
3. Run the installer program.
4. Follow the onscreen instructions.

Registering your Razer DeathAdder

Please visit www.razerzone.com/registration/ for online product registration.

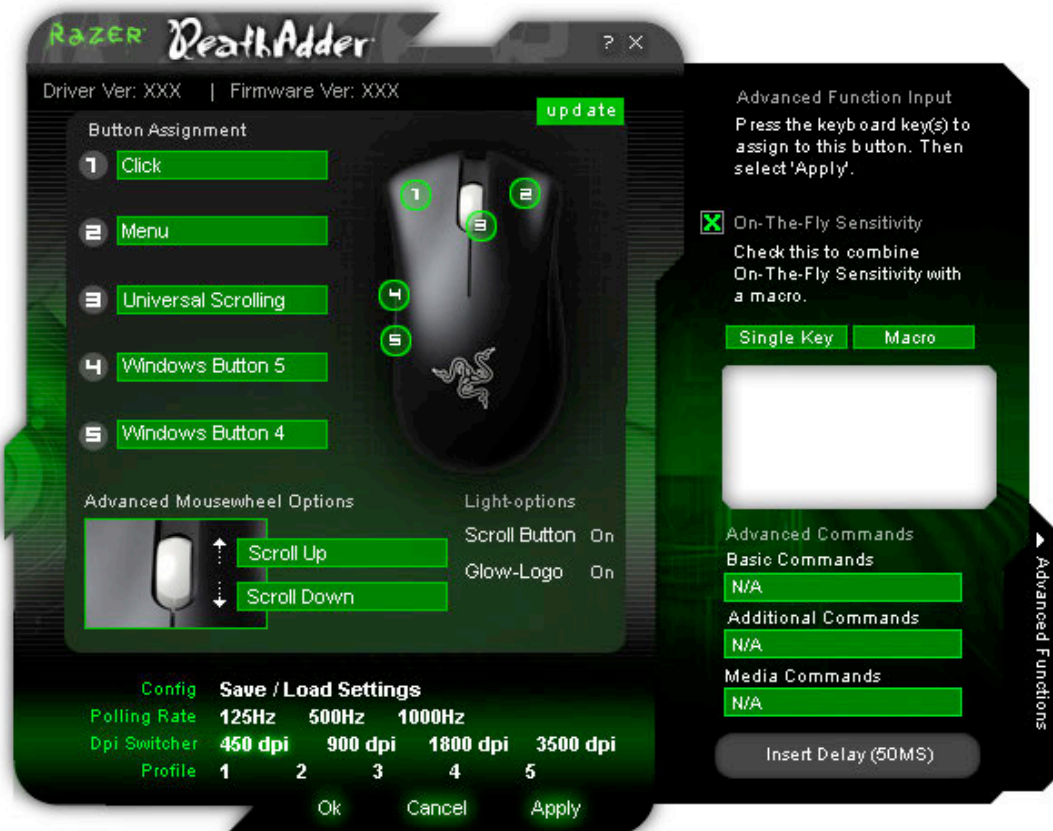
What you'll get:

- 2 years limited manufacturer's warranty
- Free online technical support at www.razersupport.com.

4. CONFIGURING YOUR RAZER DEATHADDER

The features listed here require the Razer DeathAdder software driver to be installed and the Razer DeathAdder Tray Icon to be active. Each setting will be saved to the current Profile on the current machine only.

MAIN WINDOW



Button Assignment

Assigns various functions to buttons. If the button function is not listed, or if you would like to assign a macro, select **ADVANCED FUNCTIONS** from the dropdown menu. Macros can be up to eight characters in length, and other tasks such as media functions can be assigned.

Polling Rate

Sets the polling rate to: 125Hz (8ms), 500Hz (2ms) or 1000Hz (1ms). Note that any change to the polling rate will only take effect after you reboot your computer.

DPI Switcher

Sets the DPI sensitivity of the Razer DeathAdder. Comes with four default DPI settings: 450, 900, 1800 and 3500dpi. You can also program DPI switching to any button on the Razer DeathAdder (E.g. Program mouse button 4 to 1800dpi, mouse button 5 to 900dpi).

Profile

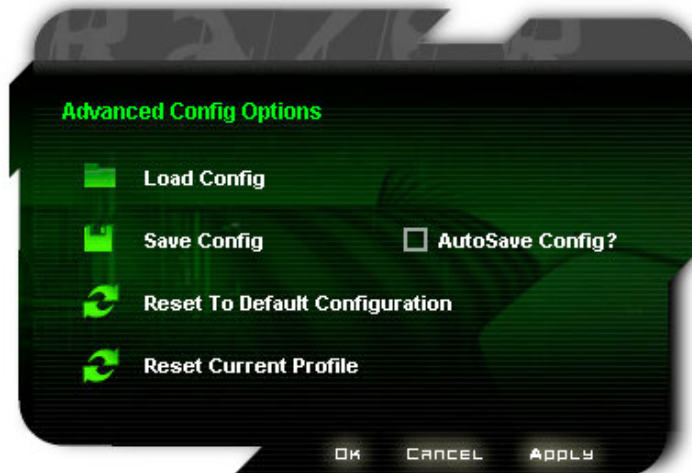
Changes the currently active Profile.

Light Options

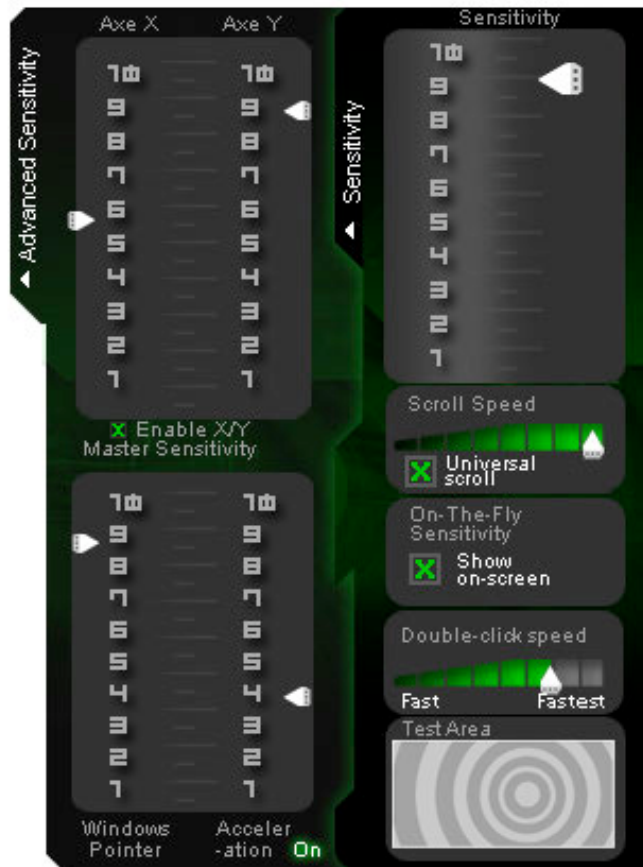
Turns on/off the indicator light on the scroll wheel and the Razer Triple-Headed Snake logo.

CONFIG, SAVE/LOAD SETTINGS

- a. **Load Config:**
Allows you to load a previously saved configuration.
- b. **Save Config:**
Save your current configuration to file.
- c. **Reset to Default Configuration:**
Set the Razer DeathAdder™ to factory default.
- d. **Reset Current Profile:**
Reset the Current Profile to default.



SENSITIVITY TAB



Sensitivity Options

Adjusts pointer sensitivity.

Scroll Speed

Adjusts the scroll wheel speed.

Universal scroll

Clicking the middle mouse button and dragging the Razer DeathAdder in one direction will enable scrolling in the same direction.

On-The-Fly Sensitivity™

Shows On-The-Fly Sensitivity onscreen when active. Activate this feature in the Button Assignment section.

Double-click speed

Adjusts the double-click speed.

ADVANCED SETTINGS TAB

X/Y Master Sensitivity Control

Adjusts X/Y sensitivity levels.

Enable X-Y Master Sensitivity

Check this option to enable individual adjustments to X-Y sensitivity levels.

Windows® Pointer Speed [Windows Only]

Adjust Windows® pointer speed (as per Windows® Mouse Control Panel). The adjustment will take effect only after reboot.

Acceleration

Turns pointer acceleration on/off and adjusts acceleration level. Note that acceleration is not recommended for gaming.

5. USING YOUR RAZER DEATHADDER

SWITCHING DPI

You can switch between DPI in two ways:

- a) By selecting the desired DPI in the Razer DeathAdder software driver.
- b) By assigning the function to a button via the Razer Configurator in the main window.

MAKING MACROS

A macro is a short sequence of keystrokes. You can make a macro by following the instructions below.

1. Load the Razer Configurator.
2. Choose a mouse button and select Advanced Functions from its dropdown menu.
3. Click on the Macro button in the Advanced Functions panel.
4. Type in the desired sequence of keystrokes. You can also include delays by clicking on "INSERT DELAY (50ms)"
5. Click APPLY when done.

SWITCHING PROFILES

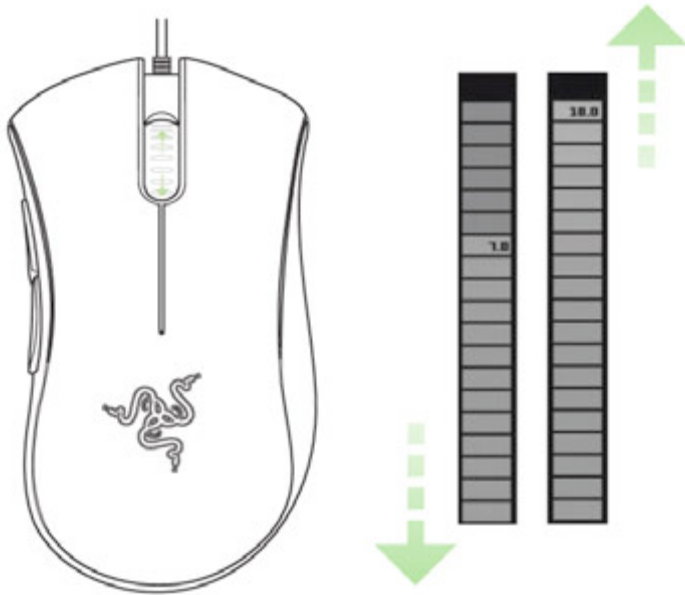
You can switch between profiles in three ways:

- a) By selecting the active profile in the Razer DeathAdder software driver.
- b) By assigning the function to a button via the Razer Configurator in the main window
- c) By using the Profile button located at the bottom of the mouse. Pressing the Profile button will advance one Profile. [Required Razer Configurator to be installed]

When the active profile is switched, the Razer DeathAdder will flash the corresponding number of times – For example, if Profile 3 is activated, the mouse will flash three times to indicate the profile you have selected.

ON-THE-FLY SENSITIVITY™

If "On-The-Fly Sensitivity" has been assigned to a button, pressing that assigned button and moving the scroll wheel will produce a bar at the lower right-hand corner of your screen, allowing you to dynamically adjust your sensitivity settings. This feature requires the driver to be installed.



DRIVER AND FIRMWARE UPDATES

You'll be able to update the Razer driver software and firmware by clicking UPDATE in the upper right hand corner of the panel. This will connect you to www.razersupport.com for the latest driver and firmware downloads.

RESTORING FACTORY DEFAULT SETTINGS

To reset the Razer DeathAdder to factory default settings, press and hold the Profile Button for 10 seconds while the Razer DeathAdder is connected to a powered-on computer.

ADVANCED SETTINGS GUIDE

Sensitivity

Mouse sensitivity is an internal filter of the driver. The maximum sensitivity setting of 10 is unfiltered. Each incremental stop or setting is a 10% decrease, i.e. 1 setting will decrease mouse pointer input to 10% (i.e. a linear graph).

Acceleration

Acceleration is an internal filter of the driver, and is primarily a legacy option for low dpi mice users. With acceleration enabled, the faster you swipe the mouse, additional movement is added. Windows XP has acceleration turned on by default as a convenience for users assuming that everyone will have 400dpi mice, but this will likely be a hindrance to most gamers and precision users who require greater accuracy. The 'acceleration off' option (default) turns off internal acceleration only and does not affect Windows XP acceleration, which can be turned off via the Control Panel, Mouse, Pointer Options, and unselecting 'Enhance Pointer Precision'.

Windows Pointer Speed [Windows Only]

Pointer speed is the Windows implementation of Sensitivity. In Windows XP, a setting of '5' means there is no filtering (default). This bar is included as a convenience.

DPI switcher – Resolution

Resolution is how many counts per inch of movement that is sent by the mouse hardware to the OS. E.g. 400dpi means a movement of one inch will result in 400 counts of movement. Without any of the above filters operating, this will result in 400 pixels of movement on the screen.

Independent X and Y-axis Settings

You can preset independent X-axis (sensitivity movements side to side) and Y-axis (sensitivity movements up and down). When this feature is enabled you will see a new on-the-fly interface bar when enacted on their screen that allows further sensitivity adjustments.

6. SAFETY AND MAINTENANCE

Safety Guidelines

In order to achieve maximum safety while using your mouse, we suggest that you adopt the following guidelines:

1. Avoid looking directly into the infrared beam of your mouse or pointing the beam in any one else's eye. Note that the infrared beam is NOT visible to the naked human eye and is set on an always-on mode.
2. Should you have trouble operating the mouse properly and troubleshooting does not work, unplug the device and contact the Razer hotline or go to www.razerzone.com for support. Do not attempt to service or fix the device yourself at any time.
3. Do not take apart the mouse (doing so will also void your warranty) and do not attempt to service it yourself or operate it under abnormal current loads.
4. Keep your mouse away from liquid, humidity or moisture. Operate your mouse only within the specified temperature range of 0°C(32°F) to 40°C(104°F). Should you operate it in a temperature that is beyond this range, unplug and switch off the device in order to let the temperature stabilize within the optimal temperature range.

COMFORT

Here are some tips to ensure that you are comfortable while using your mouse. Research has shown that long periods of repetitive motion, improper positioning of your computer peripherals, incorrect body position, and poor habits may be associated with physical discomfort and injury to nerves, tendons, and muscles. Please follow these guidelines to ensure comfortable use of your mouse and avoid injury.

1. Position your keyboard and monitor directly in front of you with your mouse next to it. Place your elbows next to your side, not too far away and your mouse within easy reach.
2. Adjust the height of your chair and table so that the keyboard and mouse are at or below elbow height.
3. Keep your feet well supported, posture straight and your shoulders relaxed.
4. During gameplay, relax your wrist and keep it straight. If you do the same tasks with your hands repeatedly, try not to bend, extend or twist your hands for long periods.
5. Do not rest your wrists on hard surfaces for long periods. Use a wrist support such as Razer's gel-filled eXactRest™ to support your wrist while gaming.
6. Customize the buttons on your mouse to suit your style of gaming in order to minimize repetitive or awkward motions while gaming.
7. Make sure that your mouse fits comfortably in your hands.
8. Do not sit in the same position all day. Get up, step away from your desk and do exercises to stretch your arms, shoulders, neck and legs.

9. If you should experience any physical discomfort while using your mouse, such as pain, numbness, or tingling in your hands, wrists, elbows, shoulders, neck or back, please consult a qualified medical doctor immediately.

MAINTENANCE AND USE

The Razer DeathAdder™ is equipped with an infrared sensor, which has a tracking beam which is invisible to the naked human eye. There is a little regular maintenance to keep the Razer DeathAdder™ in optimum condition. Once a month we recommend you unplug the mouse from the USB port and clean the lens below the Razer DeathAdder™ with a soft cloth or cotton swab. Use a little warm water but no soap or harsh cleaning agents.

To get the ultimate experience in movement and control, we highly recommend a premium mousing surface from Razer. Some surfaces will cause undue wear on the feet requiring constant wear and eventual replacement.

Do note that the sensor of the Razer DeathAdder™ is 'tuned' or optimized especially for the Razer™ mousing surfaces. The Razer DeathAdder™ has been optimized with Razer™ mousing surfaces and this means that the sensor has been tested extensively to confirm that it reads and tracks best on Razer™ mousing surfaces. Do note that other premium mousing surfaces from companies like Everglide™ may work just as well.

7. LEGALESE

COPYRIGHT INFORMATION

©2008-2009 Razer USA Ltd. All Rights Reserved.

Razer™, the Razer Triple-Headed Snake logo, the Razer distressed word logo, DeathAdder™ and other trademarks contained herein are the property of Razer USA Ltd and/or its affiliated or associated companies, registered in the United States or other countries. Mac OS, Mac and the Mac logo are trademarks or registered trademarks of Apple Inc., registered in the U.S. and other countries. All other trademarks are the property of their respective owners. Actual product may differ from pictures.

Razer™ assumes no responsibility for any errors that may appear in this software, manual or help file. Information contained herein is subject to change without notice.

Razer™ may have patents, patent applications, trademarks, copyrights, trade secrets or other property rights, intellectual and otherwise concerning the product and subject matter in this manual and software. Except as is provided in any written license agreement provided by Razer™, furnishing of this manual does not give you a license to any such patents, trademarks, copyrights or other intellectual property rights, whether registered or otherwise. Patent Pending.

SOFTWARE LICENSE AGREEMENT ('AGREEMENT')

Razer™ IS WILLING TO LICENSE THE ENCLOSED SOFTWARE TO YOU ONLY ON THE CONDITION THAT YOU ACCEPT ALL OF THE TERMS CONTAINED IN THIS LICENSE AGREEMENT. This is a legal agreement between you (either an individual end-user, corporate entity or any other entity whatsoever) and Razer™. By installing, uploading, copying or utilizing in any way the software, you are agreeing to be bound by the terms and conditions of this Agreement. If you do not agree to the terms of this Agreement, do not install the software and promptly return the software package and other items that are part of this product in their original package with your payment receipt to your point of purchase for a full refund.

GRANT OF LICENSE

Razer™ grants you a non-exclusive, revocable license to use one copy of the enclosed software program, licensed and not sold to you, ("Software") on one computer only with the Razer™ product you have

purchased. No other rights are granted. The Software is in use if it is installed, including but not limited to loaded on the computer's permanent or temporary memory. For backup purposes only, you may make one copy of the Software for your own use. You must include on the backup copy all copyright and other notices included in the Software as supplied by Razer™. Installation on a network server for the sole purpose of your internal distribution of the Software is permitted only if you have purchased an individual Software package or concurrent dedicated license for each networked computer to which the Software is distributed.

RESTRICTIONS

Razer™ retains full ownership of the Software. You shall not directly and/or indirectly attempt to decompile, disassemble, reverse-engineer, or modify the Software licensed to you in any way except as allowed by law. You may not transmit the Software over a network (except as expressly permitted above) or electronically using any means. You may not directly and/or indirectly transfer the Software except upon a permanent transfer of the enclosed Razer™ product provided that all Software updates are included in the transfer, you do not retain a copy of the Software, and the transferee agrees to be bound by the terms and conditions in this license. Upon any violation of any of the provisions of the Agreement, your rights to use the software shall automatically terminate and all copies of the Software must be returned to Razer™ or destroyed.

LIMITATION OF LIABILITY

The warranties set forth in this agreement replace and/or supersede all other warranties and your remedies for breach of warranty are expressly limited to those herein set forth. Razer™ expressly disclaims all other warranties to the extent allowed by law including, but not limited to, the implied warranties of merchantability, fitness for a particular purpose and non-infringement of third-party rights with respect to the documentation, software (including patches and/or updates) and hardware. No Razer™ supplier, dealer, agent, or employee is authorized to make any modification, extension or alteration of the warranty or to substitute products or services, lost profits, loss of information or data, or any other special, indirect, consequential or incidental damages arising in any way out of the distribution of, sale of, resale of, use of, or inability to use any product or software subject to warranty herein set forth. In no event will Razer™ be liable for any special, incidental, indirect or consequential damages whatsoever.

COSTS OF PROCUREMENT PRODUCT OR SERVICE

For the avoidance of doubt, in no event will Razer™ be liable for any costs of procurement unless it has been advised of the possibility of such damages, and in no case shall Razer™ be liable for any costs of procurements liability exceeding the actual money paid for the products subject to warranty at issue.

In the event some jurisdictions do not allow the limitation of implied warranties or liability for incidental, consequential, special, or indirect damages, the above limitation may not apply. The above limitations will not apply in case of personal injury where and to the extent that applicable laws require such liability.

U.S. GOVERNMENT RESTRICTED RIGHTS

The Software is provided to the U.S. government only with restricted rights and limited rights. Use, duplication, or disclosure by the U.S. Government is subject to restrictions set forth in 48 C.F.R. 2.101 (October 1995), consisting of "Commercial Computer Software" and "Commercial Computer Software Documentation as such terms are used in 48C.F.R. 12.212 (September 1995), and in FAR Sections 52-227-14 and 52-227-19 r DFARS Section 52-227-7013 ©(1) (ii), or their successors, as applicable. Consistent with 48 C.F.R. 12.512 and 48 C.F.R. 227-7202-1 through 27-7204-4 (June 1995), or any successor regulations, this Software is provided to U.S. Government users pursuant to the terms and conditions herein.