

A man with grey hair and glasses, wearing a dark blue blazer over a white shirt, is smiling and looking at a woman. The woman has brown hair in a braid and is wearing a white short-sleeved shirt and grey trousers. They are in a clothing store, looking at a yellow garment hanging on a rack. The store has wooden shelves with folded clothes and track lighting on the ceiling.

PHILIPS



Fortimo

LED modules

SLM Gen7 HD

Exceptional
light quality,
**ultimate
flexibility**

For today, for tomorrow

High-density spot light LED modules that sell

In fashion retail, the physical shopping experience is gaining importance as the decision moment of the customer in the store is key to generate sales, even for sales via online platforms. This makes it essential to create an atmosphere that keeps customers in the store.

Creating an attractive fashion retail experience requires lighting that brings out rich colors and stunning whites as well as allowing different beam angles to be used to create contrast and drama. We help you to take retail lighting to the next level with LED modules that ensure merchandise – and your brand – shines. The latest generation of Fortimo LED SLM extends the possibilities to differentiate by combining a high punch effect with narrow beam optics in miniaturized luminaire designs.



Better aesthetics and narrower beam angles

Philips Fortimo SLM LED modules deliver superior Quality of Light. The latest to join the growing portfolio is a high-density LED module for spot applications. The Fortimo SLM Gen7 HD features a larger number of LEDs on a small surface to produce a narrow beam with high output. The Fortimo LED SLM HD portfolio makes it possible to reach up to 3000 lumens out of a COB with a LES size of just 9 mm. This 9 mm LES size enables more efficient optics to direct the light where it's needed, while the compact size gives more freedom in design in terms of aesthetics, beam angle and miniaturization.

Fortimo LED SLM Gen7 HD PremiumWhite

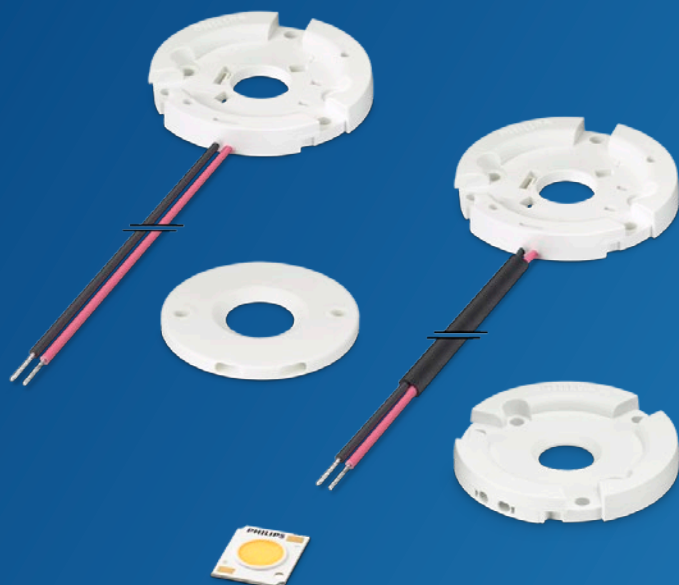
PremiumWhite offers excellent light quality with a very high energy efficiency. It's specially designed for spot and accent lighting in fashion retail, hospitality and supermarket applications where light quality and total cost of ownership are key requirements. Combined with the Fortimo SLM HD technology, it is the perfect portfolio to offer the best quality of light combined with miniaturization and energy efficiency for narrow beam, high punch applications. Premium white is available in 3000K, 3500K and 4000K.



Retail

Key features and benefits

Fortimo SLM Gen7 HD for fashion retail



Up to 3000 lumen with a LES size of 9 mm

High density for optimized luminaire performance

Small Light Emitting Surface (LES) size for high efficient narrow beam optics

Exceptional rendering of whites and rich colors

Extensive Choice of color temperatures, CRI and spectra

Efficacies up to 115 lm/W* or higher

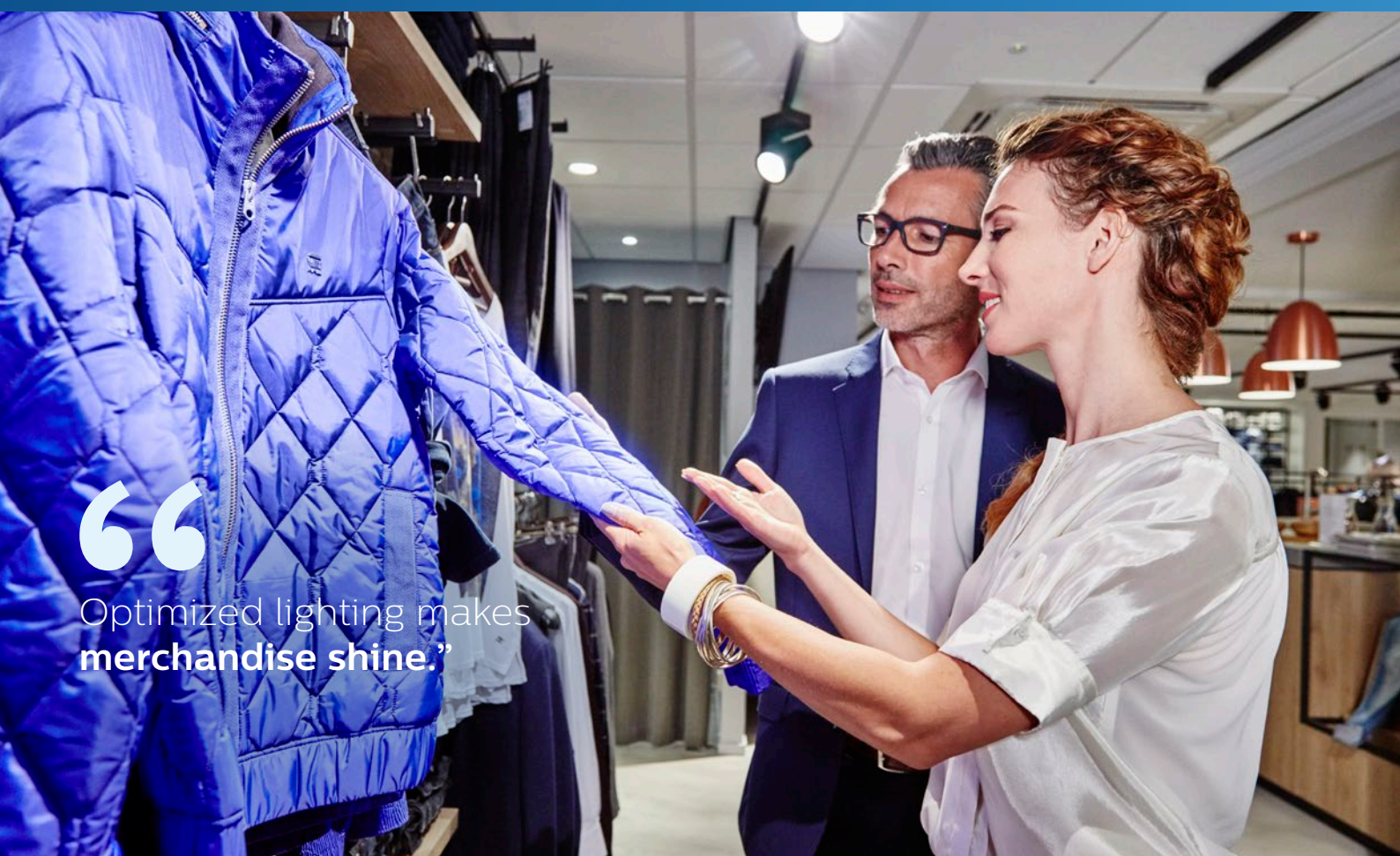
Extended Tc of up to 95°C possible

5 year warranty

* Fortimo SLM C 840 1204 L09 1619 G7 - 700 mA - 2960 lm - Tc=75 °C

“

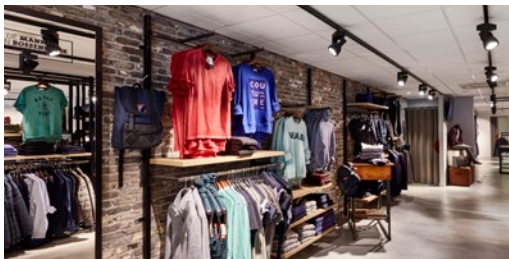
Optimized lighting makes
merchandise shine.”





Fashion Retail

Fortimo LED SLM Gen7 HD



As energy costs are high on the retail agenda, our aim is to develop the most efficient light sources that offer good quality of light. This portfolio includes several propositions including 2700, 3000, 3500, and 4000 K with a color rendering index (CRI) of >70, >80 and >90.

Specifications

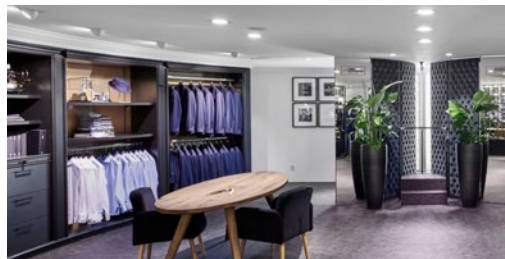
2700, 3000, 3500, 4000, 5000 and 5700 K on BBL

CRI 70, 80 or 90

Up to 115 lm/W (1204 L09 840 - 700mA - Tc=75 °C)

PremiumWhite

Excellent light quality with the perfect



total cost of ownership; that's the ultimate combination that fashion retailers are looking for. PremiumWhite achieves exactly the right balance with high rendering of colors and beautifully whites. It's a must-have light source for track spots in fashion stores. Now also available in the Fortimo LED SLM HD portfolio.

Specifications

3000, 3500 and 4000 K below BBL

CRI 80 or 90

110 lm/W (1204 830PW - 700mA - Tc=75 °C)

PremiumWhite effect

Explore more

www.lighting.philips.co.uk/PremiumWhite



Your vision, our modules

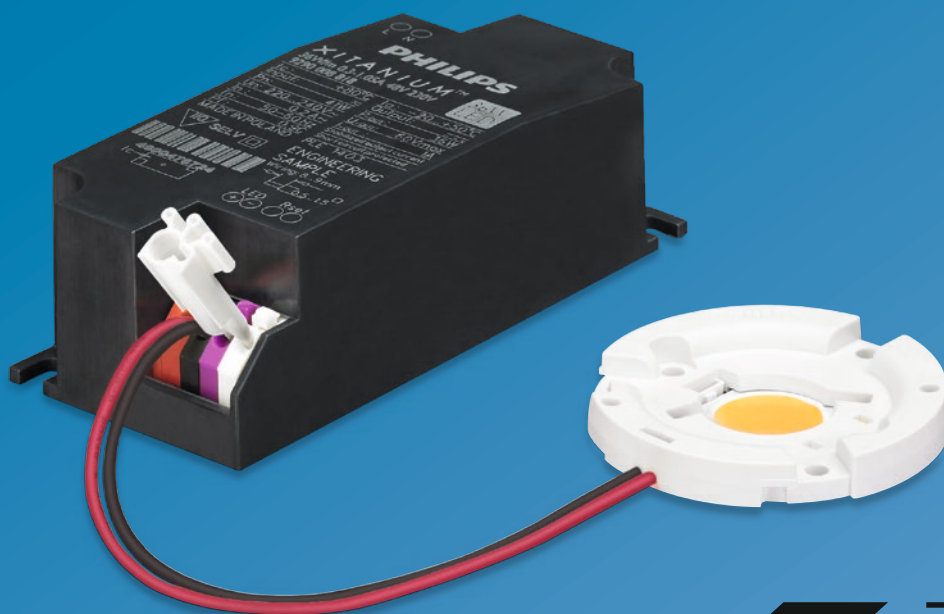
High quality, easy to work with and future-proofed. That's the Fortimo LED SLM modules.

A smart system

The Fortimo LED SLM system is backward compatible and easy to design-in. It also has a long and proven lifetime backed up by the Philips five-year system warranty.

The SLM modules promise flexible lumen output settings, consistent light distribution, and a standardized optical, mechanical, electrical and thermal interface. The module design is Zhaga-compliant and is backwards-compatible with previous SLM generation CoB's, holders and drivers.*

* Zhaga-compliant and is backwards-compatible with previous SLM generation CoB's, holders and drivers. Measurements on the SLM 3000 lm L15 module show compliance to Zhaga book 3 version 1.2



Zhaga

5 year
system
warranty

Spot light essentials

The Fortimo LED SLM is designed to work with our wide range of Xitanium LED drivers. This smart system approach includes the following spot light essentials:

- Xitanium mini drivers to minimize luminaire designs
- Xitanium window drivers with SimpleSet technology for maximum flexibility
- Xitanium Single Current drivers for plug&play solutions
- DALI dimming for scene setting and additional energy savings
- independent driver with mains loop through, for easy installation with a remote driver
- DC input is enabled to ensure compatibility with a central emergency system.

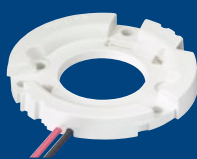
Easy design-in and approbation

Fortimo LED SLM systems are designed to meet the challenges faced by luminaire manufacturers:

- easy design-in possibilities with a high Tc point of 95 °C for further miniaturization
- ENEC, CE, REACH and RoHS-certified for quick and easy luminaire approbation
- full set of complementary thermal and optical partner components available for quick luminaire design.

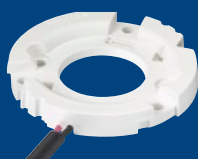
Maximum flexibility

The modules come with four different holder options. These must be ordered separately:



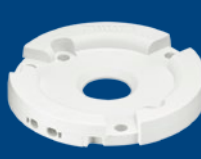
Standard holder

with two fixed, pre-molded connection wires (60 cm, pre-tinned)



Down light holder

with two fixed, pre-molded connection wires (60 cm, tin-dipped) with an extra sleeve to accommodate strain relief



ZP holder NEW

Original Fortimo shaped holder (Zhaga compliant) with poke-in connectors for easy assembly of pre-wired luminaires



Poke-in holder

without fixed wires, but with two push-in connection points allowing users to mount their own wires.

The Easy Design-in Tool

Create your ideal configuration in minutes. Design the optimal LED system in the fastest, most simple way.

The Easy Design-in Tool is a powerful, time-saving way to speed up the work of those who design or define LED systems. It's a true solution composer and is ideal for all those involved in delivering added-value LED solutions right through the supply chain.

Check out our tool online!

Visit philips.com/easydesignintool



Product and ordering information

Fortimo SLM Gen7 HD



Product name	Order Code
LES size: 9mm	EOC
Fortimo SLM C 730 1204 L09 1619 G7	871869675112100
Fortimo SLM C 740 1204 L09 1619 G7	871869675115200
Fortimo SLM C 827 1204 L09 1619 G7	871869675118300
Fortimo SLM C 830 1204 L09 1619 G7	871869675121300
Fortimo SLM C 835 1204 L09 1619 G7	871869675124400
Fortimo SLM C 840 1204 L09 1619 G7	871869675131200
Fortimo SLM C 850 1204 L09 1619 G7	871869675138100
Fortimo SLM C 857 1204 L09 1619 G7	871869675145900
Fortimo SLM C 927 1204 L09 1619 G7	871869675148000
Fortimo SLM C 930 1204 L09 1619 G7	871869675151000

Fortimo SLM Gen7 HD - Premium White



Product name	Order Code
LES size: 9mm	EOC
Fortimo SLM C 830 PW 1204 L09 1619 G7	871869675154100
Fortimo SLM C 930 PW 1204 L09 1619 G7	871869675157200
Fortimo SLM C 935 PW 1204 L09 1619 G7	871869675160200
Fortimo SLM C 940 PW 1204 L09 1619 G7	871869675163300





Fortimo SLM Gen6 - Holders

Product name	Order Code
Standard holder	EOC
Fortimo SLM H 1619 G1	871869652205900
Downlight holder	
Fortimo SLM H DL 1619 G1	871869652208000
Zhaga Poke-in holder	
Fortimo SLM H ZP 1619 G1	694793912723800
Poke-in holder	
Fortimo SLM H PI 1619 G1	871869652211000



Driver compatibility

Module type	Xitanium LED driver window*	Xitanium Single Current LED driver*
1204, L09	Xitanium 20W 0.15–0.5A 48V	Xitanium 16W/m 0.35A 46V SC 230V
	Xitanium 36W 0.3–1A 48V	Xitanium 23W/m 0.5A 46V SC 230V
	Xitanium 50W 0.9–1.4A 48V	Xitanium 32W/m 0.7A 46V SC 230V
	Xitanium 50W 0.7–1.5A 48V	



* Check the Xitanium indoor point driver portfolio or [EasyDesignInTool.com](https://www.philips.com/easydesignintool) for all available drivers with the operating point you need.

For more information see datasheet

Fortimo and Xitanium – partners in performance

Luminaire performance is determined by the sum of its component parts, each carefully designed or selected to meet specific application requirements. In addition to the Fortimo LED lighting modules featured here, we also offer an extensive range of Xitanium LED drivers. Pair components from these complementary families and you'll benefit from design-in simplicity, flexibility, compatibility and exceptionally long life including 5y system warranty. You'll also enjoy the convenience of dealing with just one knowledgeable supplier of these vital luminaire components.

