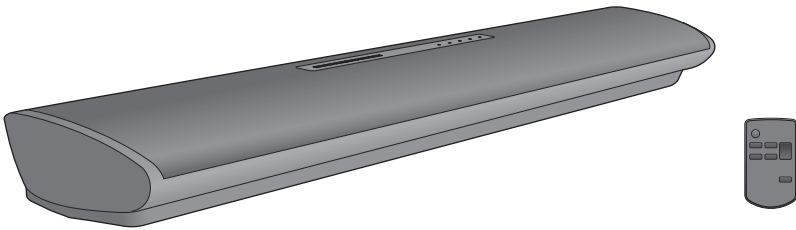




# Owner's Manual

## Home Theater Audio System

Model No. SC-HTB8



Thank you for purchasing this product.  
Please read these instructions carefully before using this product,  
and save this manual for future use.

If you have any questions, visit:  
U.S.A. : [www.panasonic.com/support](http://www.panasonic.com/support)

Register online at [www.panasonic.com/register](http://www.panasonic.com/register) (U.S. customers only)

### Included Installation Instructions

**The installation work should be done by a qualified installation specialist. (⇒ p. 10 to 14)**  
Before commencing work, carefully read these installation instructions and the operating instructions  
to ensure that installation is performed correctly.  
(Please keep these instructions. You may need them when maintaining or moving this unit.)

# IMPORTANT SAFETY INSTRUCTIONS

Read these operating instructions carefully before using the unit. Follow the safety instructions on the unit and the applicable safety instructions listed below. Keep these operating instructions handy for future reference.

- 1 Read these instructions.
- 2 Keep these instructions.
- 3 Heed all warnings.
- 4 Follow all instructions.
- 5 Do not use this apparatus near water.
- 6 Clean only with dry cloth.
- 7 Do not block any ventilation openings. Install in accordance with the manufacturer's instructions.
- 8 Do not install near any heat sources such as radiators, heat registers, stoves, or other apparatus (including amplifiers) that produce heat.
- 9 Do not defeat the safety purpose of the polarized or grounding-type plug. A polarized plug has two blades with one wider than the other.  
A grounding-type plug has two blades and a third grounding prong. The wide blade or the third prong are provided for your safety. If the provided plug does not fit into your outlet, consult an electrician for replacement of the obsolete outlet.
- 10 Protect the power cord from being walked on or pinched particularly at plugs, convenience receptacles, and the point where they exit from the apparatus.
- 11 Only use attachments/accessories specified by the manufacturer.
- 12 Use only with the cart, stand, tripod, bracket, or table specified by the manufacturer, or sold with the apparatus. When a cart is used, use caution when moving the cart/apparatus combination to avoid injury from tip-over.
- 13 Unplug this apparatus during lightning storms or when unused for long periods of time.
- 14 Refer all servicing to qualified service personnel. Servicing is required when the apparatus has been damaged in any way, such as power-supply cord or plug is damaged, liquid has been spilled or objects have fallen into the apparatus, the apparatus has been exposed to rain or moisture, does not operate normally, or has been dropped.



## WARNING

### Unit

- To reduce the risk of fire, electric shock or product damage,
  - Do not expose this unit to rain, moisture, dripping or splashing.
  - Do not place objects filled with liquids, such as vases, on this unit.
  - Use only the recommended accessories.
  - Do not remove covers.
  - Do not repair this unit by yourself. Refer servicing to qualified service personnel.
- To prevent injury, this apparatus must be securely attached to the wall in accordance with the installation instructions.

### AC power supply cord

- The power plug is the disconnecting device. Install this unit so that the power plug can be unplugged from the socket outlet immediately.

### Button-type battery (Lithium battery)

- Risk of fire, explosion and burns. Do not disassemble, heat above **60 °C (140 °F)** or incinerate.



### DO NOT INGEST BATTERY, CHEMICAL BURN HAZARD

This product contains a coin/button cell battery. If the coin/button cell battery is swallowed, it can cause severe internal burns in just 2 hours and can lead to death. Keep new and used batteries away from children. If the battery compartment does not close securely, stop using the product and keep it away from children. If you think batteries might have been swallowed or placed inside any part of the body, seek immediate medical attention.

If any electrolyte should come into contact with your hands or clothes, wash it off thoroughly with water. If any electrolyte should come into contact with your eyes, never rub the eyes. Rinse eyes thoroughly with water, and then consult a doctor.

<For USA-California only>

This product contains a CR Coin Cell Lithium Battery which contains Perchlorate Material — special handling may apply.

See [www.dtsc.ca.gov/hazardouswaste/perchlorate](http://www.dtsc.ca.gov/hazardouswaste/perchlorate).

## CAUTION

### Unit

- Do not place sources of naked flames, such as lighted candles, on this unit.
- Product Identification Marking is located on the bottom of the unit.

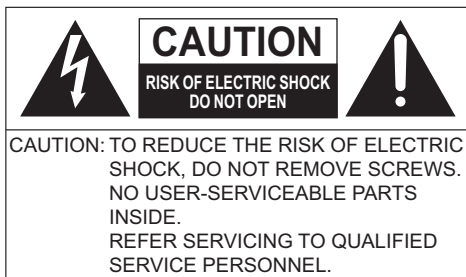
### Placement

- To reduce the risk of fire, electric shock or product damage,
  - Do not install or place this unit in a bookcase, built-in cabinet or in another confined space. Ensure this unit is well ventilated.
  - Do not obstruct this unit's ventilation openings with newspapers, tablecloths, curtains, and similar items.

### Button-type battery (Lithium battery)

- Danger of explosion if battery is incorrectly replaced. Replace only with the type recommended by the manufacturer.
- Keep out of reach of children.
- Insert with poles aligned.
- Mishandling of batteries can cause electrolyte leakage and may cause a fire.
  - Remove the battery if you do not intend to use the remote control for a long period of time. Store in a cool, dark place.
  - Do not heat or expose to flame.
  - Do not leave the battery(ies) in a car exposed to direct sunlight for a long period of time with doors and windows closed.
  - Do not touch the terminals (+ and –) with metal objects.
  - Do not recharge, disassemble, remodel, heat or throw into fire.
- When disposing of the batteries, please contact your local authorities or dealer and ask for the correct method of disposal.

**The following mark and symbols are located on bottom of the unit.**



The lightning flash with arrowhead symbol, within an equilateral triangle, is intended to alert the user to the presence of uninsulated "dangerous voltage" within the product's enclosure that may be of sufficient magnitude to constitute a risk of electric shock to persons.



The exclamation point within an equilateral triangle is intended to alert the user to the presence of important operating and maintenance (servicing) instructions in the literature accompanying the appliance.

### FCC Note:

This equipment has been tested and found to comply with the limits for a Class B digital device, pursuant to Part 15 of the FCC Rules.

These limits are designed to provide reasonable protection against harmful interference in a residential installation. This equipment generates, uses and can radiate radio frequency energy and, if not installed and used in accordance with the instructions, may cause harmful interference to radio communications.

However, there is no guarantee that interference will not occur in a particular installation. If this equipment does cause harmful interference to radio or television reception, which can be determined by turning the equipment off and on, the user is encouraged to try to correct the interference by one or more of the following measures:

- Reorient or relocate the receiving antenna.
- Increase the separation between the equipment and receiver.
- Connect the equipment into an outlet on a circuit different from that to which the receiver is connected.
- Consult the dealer or an experienced radio/TV technician for help.

Any unauthorized changes or modifications to this equipment would void the user's authority to operate this device.

This device complies with Part 15 of the FCC Rules.

Operation is subject to the following two conditions:

- (1) This device may not cause harmful interference, and
- (2) this device must accept any interference received, including interference that may cause undesired operation.

Responsible Party:

Panasonic Corporation of North America

Two Riverfront Plaza, Newark, NJ 07102-5490

Support Contact: <http://www.panasonic.com/contactinfo>

This transmitter must not be co-located or operated in conjunction with any other antenna or transmitter.

This equipment complies with FCC radiation exposure limits set forth for an uncontrolled environment and meets the FCC radio frequency (RF) Exposure Guidelines. This equipment has very low levels of RF energy that is deemed to comply without maximum permissive exposure evaluation (MPE). But it is desirable that it should be installed and operated keeping the radiator at least 20 cm (7 7/8") or more away from person's body (excluding extremities: hands, wrists, feet and ankles).

**FCC ID:ACJ-SC-HTB8**

# Table of contents

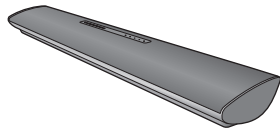
|  |    |
|--|----|
| IMPORTANT SAFETY INSTRUCTIONS .....                      | 2  |
| <hr/>  |    |
| <b>Before use</b>  |    |
| <hr/>  |    |
| Supplied items .....                                     | 5  |
| This system .....  | 5  |
| Accessory .....  | 5  |
| Control reference guide .....                            | 6  |
| This system (Front).....                                 | 6  |
| This system (Rear) .....                                 | 6  |
| Remote control .....                                     | 7  |
| <hr/>  |    |
| <b>Getting started</b>                                   |    |
| <hr/>  |    |
| Step 1 Connections .....                                 | 8  |
| Connection with the TV .....                             | 8  |
| Connection with other devices.....                       | 8  |
| AC power supply cord connection .....                    | 8  |
| Bluetooth® connection .....                              | 9  |
| Step 2 Placement .....                                   | 10 |
| Safety Precautions .....                                 | 10 |
| Wireless interference .....                              | 10 |
| Selecting the placement method .....                     | 11 |
| When placing the main unit on a rack or on a table ..... | 12 |
| When attaching the main unit to a wall .....             | 13 |
| <hr/>  |    |
| <b>Operations</b>  |    |
| <hr/>  |    |
| Using this system .....                                  | 15 |
| Advanced operations .....                                | 16 |
| <hr/>  |    |
| <b>Reference</b>   |    |
| <hr/>  |    |
| Troubleshooting .....                                    | 17 |
| About Bluetooth® .....                                   | 19 |
| Unit care .....  | 19 |
| License .....  | 19 |
| Indicator illumination .....                             | 20 |
| Specifications .....                                     | 21 |
| Limited Warranty<br>(ONLY FOR U.S.A.) .....              | 22 |

- The illustrations shown may differ from your unit.
- Operations in this Owner's Manual are described mainly with the remote control, but you can perform the operations on the main unit if the controls are the same.

## Supplied items

### This system

- ☐ **1 Main unit (Speaker)**  
(SC-HTB8)



### Accessory

Check the supplied accessory before using this system.

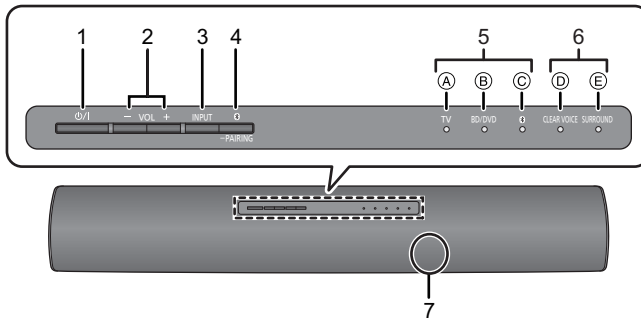
- ☐ **1 Remote control**  
**(with a battery)**  
(N2QAYC000102)



- Product numbers are correct as of March 2014. These may be subject to change.
- To order accessories, refer to "Accessory Purchases (United States)" on page 22.

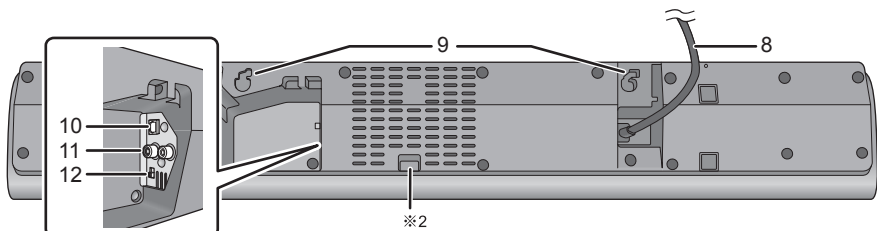
# Control reference guide

## This system (Front)



- 1 **Standby/on switch (O/I)**  
Press to switch the unit from on to standby mode or vice versa. In standby mode, the unit is still consuming a small amount of power.
- 2 **Adjust the volume of this system (⇒ p. 15)**
- 3 **Select the input source (⇒ p. 15)**  
“TV” → “BD/DVD” → “” (Bluetooth®)  
↑
- 4 **Select the Bluetooth® device as the source (⇒ p. 15)**
- 5 **Input selector indicators<sup>※1</sup>**
  - (A) **TV indicator**  
Lights green when the TV is the audio source
  - (B) **BD/DVD indicator**  
Lights amber when the device connected to the BD/DVD terminal is the audio source
  - (C) **Bluetooth® indicator**  
Lights amber when the Bluetooth® device is the audio source
- 6 **Sound mode indicators<sup>※1</sup>**
  - (D) **CLEAR VOICE indicator**  
Lights amber when clear voice is the current sound mode
  - (E) **SURROUND indicator**  
Lights amber when surround is the current sound mode
- 7 **Remote control signal sensor (⇒ p. 7)**

## This system (Rear)

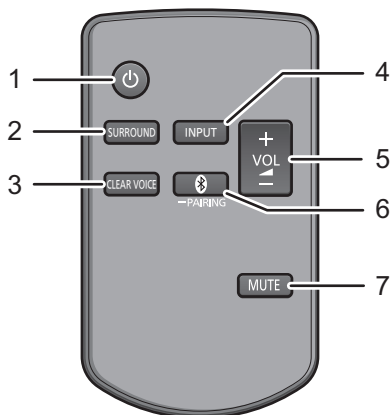


- 8 **AC power supply cord (⇒ p. 8)**
- 9 **Wall mounting hole**
- 10 **OPTICAL DIGITAL AUDIO IN terminal (⇒ p. 8)**
- 11 **AUDIO IN terminal (⇒ p. 8)**
- 12 **MULTI ANGLE switch (⇒ p. 12, 13)**  
Switch the audio quality according to the placement method of the main unit.

※1 The indicators will also blink in various conditions. (⇒ p. 20)

※2 For service use only

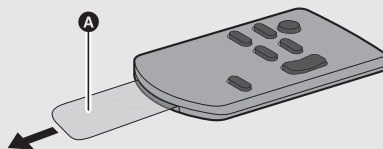
## Remote control



- 1 Turn the main unit on or off (⇒ p. 15)
- 2 Turn the surround effect on or off (⇒ p. 15)
- 3 Turn the clear voice effect on or off (⇒ p. 15)
- 4 Select the input source (⇒ p. 15)  
 "TV" → "BD/DVD" → "Bluetooth®"  
 ↑
- 5 Adjust the volume of this system (⇒ p. 15)
- 6 Select the Bluetooth® device as the source (⇒ p. 15)
- 7 Mute the sound (⇒ p. 15)

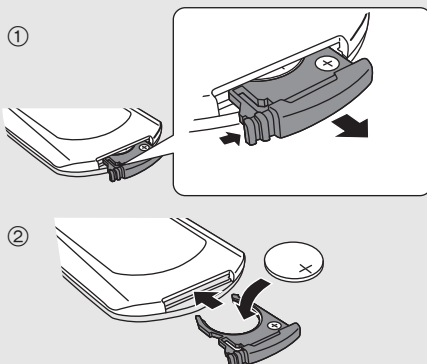
### ■ Before using for the first time

Remove the insulation sheet **A**.



### ■ To replace a button-type battery

Battery type: CR2025 (Lithium battery)



- Set the button-type battery with its (+) mark facing upward.

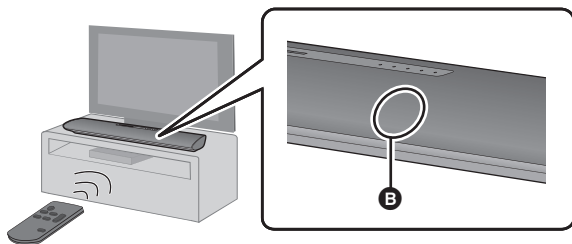
### ■ About remote control signal sensor

The remote control signal sensor is located on the main unit.

- Use the remote control within the correct operation range.

Distance: Within approx. 7 m (23 ft) directly in front

Angle: Approx. 30° left and right

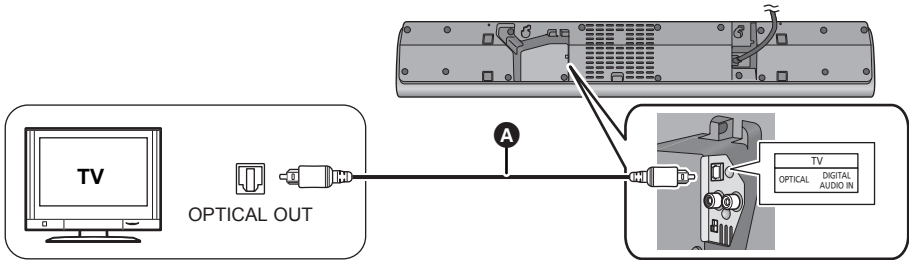


- B** Remote control signal sensor

# Step 1 Connections

- Turn off all equipment before connection and read the appropriate operating instructions.
- Do not connect the AC power supply cord until all other connections are completed.

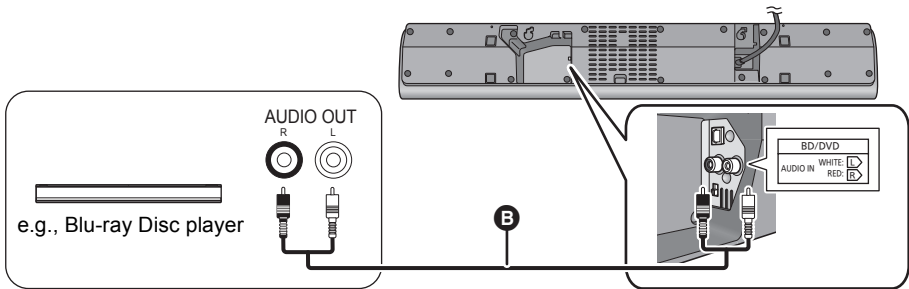
## Connection with the TV



### A Optical digital audio cable

- When you use the optical digital audio cable, insert the tip correctly into the terminal.
- Do not bend the optical digital audio cable.
- The optical input supports PCM only.

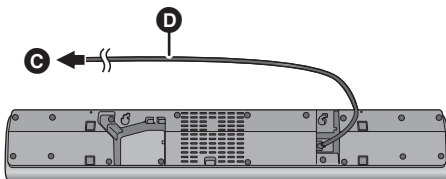
## Connection with other devices



### B Audio cable

## AC power supply cord connection

- Connect only after all other connections are completed.



C To an AC outlet

D AC power supply cord

- This system consumes a small amount of AC power (⇒ p. 21) even when it is turned off. In the interest of power conservation, if you will not be using this system for a long time, unplug it from the AC outlet.



## Bluetooth® connection

By using the Bluetooth® connection, you can listen to the sound from your Bluetooth® audio device to this system wirelessly.

- Refer to the operating instructions of the Bluetooth® device for further instruction on how to connect a Bluetooth® device.

### Preparation

- Turn on the Bluetooth® feature of your device and place your device near the main unit.

## Bluetooth® pairing

- 1 Press [🔊] to select “🔊”.**
  - If the “🔊” indicator flashes quickly, go to step 3.
- 2 Press and hold [🔊] until the “🔊” indicator flashes quickly.**
  - If the “🔊” indicator flashes slowly, repeat step 2.
- 3 Select “SC-HTB8” from the Bluetooth® menu of your device.**
  - If prompted for the passkey on the Bluetooth® device, enter “0000”.
  - Once the Bluetooth® device is connected, the “🔊” indicator stops flashing and lights up.



- You can register 8 or more Bluetooth® devices to this unit. However, when this unit is turned off, it can store only up to 8 registered devices. If you register 9 or more devices, devices with the oldest connection history will be deleted.

## Connecting a paired Bluetooth® device

- 1 Press [🔊] to select “🔊”.**
  - If the “🔊” indicator lights, a Bluetooth® device is already connected with this system. Disconnect it. (⇒ below)
- 2 Select “SC-HTB8” from the Bluetooth® menu of your device.**

### ■ Disconnecting a Bluetooth® device

Press and hold [🔊] until the “🔊” indicator flashes slowly.



- When “🔊” is selected as the source, this system will automatically try and connect to the last connected Bluetooth® device. If the connection attempt fails, try to establish a connection again.
- The Bluetooth® device will be disconnected if a different audio source (e.g. “TV”) is selected.
- This system can only be connected to one device at a time.

# Step 2 Placement

## Safety Precautions

Professional installation is required.

**The installation should never be done by any other than a qualified installation specialist. PANASONIC DISCLAIMS ANY PROPERTY DAMAGE AND/OR SERIOUS INJURY, INCLUDING DEATH RESULTING FROM IMPROPER INSTALLATION OR INCORRECT HANDLING.**

- Be sure to install the main unit as indicated within this Owner's Manual.
- Attach using techniques suited to the structure and materials of the installation location.



### Caution

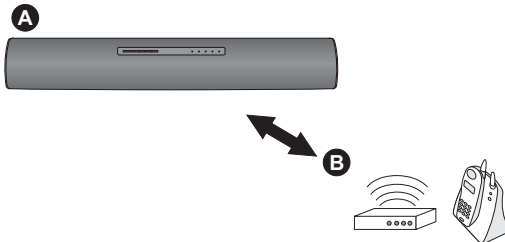
- This system is to be used only as indicated in these instructions. Failure to do so may lead to damage to the amplifier and/or the speaker, and may result in the risk of fire. Consult a qualified service person if damage has occurred or if you experience a sudden change in performance.
- Do not attempt to attach the main unit to a wall using methods other than those described in this manual.



- Do not hold the main unit in one hand to avoid injury, you may drop the main unit when carrying it.
- To prevent damage or scratches, lay down a soft cloth and perform the assembly on it.

## Wireless interference

To avoid interference, maintain the following distances between the main unit and other electronic devices that use the same radio frequency (2.4 GHz band).



- A** Main unit
- B** Wireless router, cordless phone and other electronic devices: approx. 2 m (6 1/2 ft)

## Selecting the placement method

Choose a placement method that suits you best.

### When placing the main unit on a rack or on a table

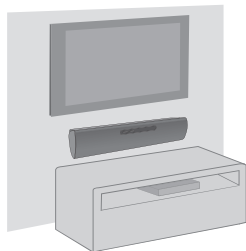
- Place the main unit on a flat and horizontal surface.
- Place the main unit in front of the TV pedestal.



➔  
Page 12

### When attaching the main unit to a wall

- Place the main unit on a flat and vertical surface.



➔  
Page 13

### ■ When placing the main unit in front of the TV

The main unit may block or interfere with the TV's various sensors (C.A.T.S. (Contrast Automatic Tracking System) sensor, remote control sensor, etc.) and the 3D Eyewear transmitters on a 3D compatible TV.

- If interference occurs, move the main unit further away from the TV. If the TV still does not function correctly, try using it in a rack or in the wall mount position.

### ■ If the TV's remote control sensor is blocked by the main unit

Try using the TV's remote control from a different angle.



- Do not use the main unit in a metal cabinet.
- If irregular coloring occurs on your TV, turn the TV off for about 30 minutes. If it persists, move the main unit further away from the TV.
- Keep magnetized items away. Magnetized cards, watches, etc., can be damaged if placed too close to the main unit.
- Keep the main unit approximately 150 mm (6") away from the TV.

## When placing the main unit on a rack or on a table

### Additionally required accessories (commercially available)

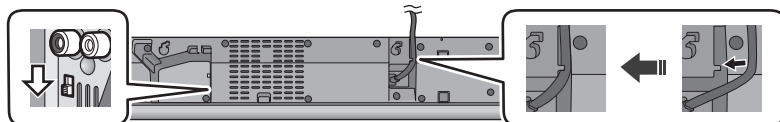
- Fall prevention cord ..... × 1
- Screw eye (to attach the fall prevention cord)..... × 1



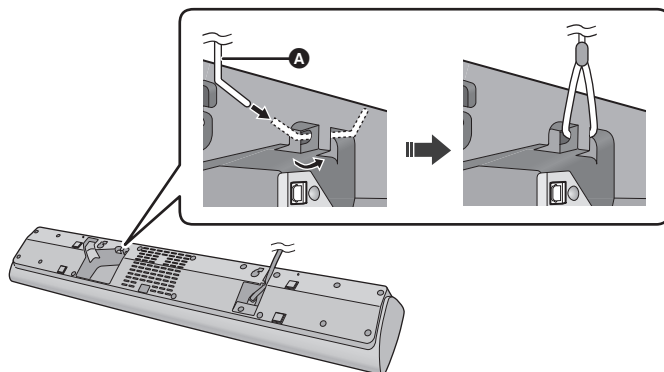
- Use commercially available screws that are capable of supporting over 33 kg (73 lbs).
- Use a cord that is capable of supporting over 10 kg (22 lbs) (with a diameter of about 2 mm ( $\frac{3}{32}$ )).

### 1 Slide the MULTI ANGLE switch to "RACK/TABLE TOP".

- Press the AC power supply cord into the holder.



### 2 Attach the cord to the main unit.

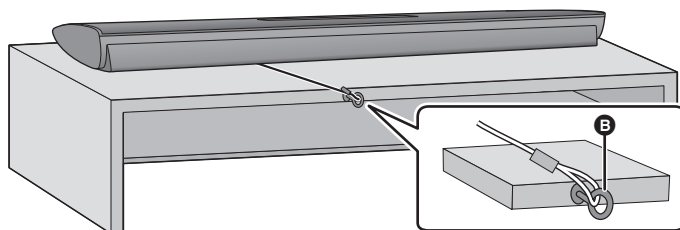


#### A Cord\*

- ※ If the cord cannot be threaded through the holes, try bending the cord in 2 locations, about 5 mm ( $\frac{3}{16}$ " ) apart from the tip, at an angle of 45° (as illustrated above).

### 3 Place the main unit in the desired position and attach the cord onto the rack or table.

- Make sure that the slack of the cord is minimal.
- Do not lean the main unit against the TV or wall.
- Do not place the main unit over the AC power supply cord.
- Ensure that the main unit is stable.



#### B Screw eye

- Attach at a position capable of supporting over 10 kg (22 lbs).
- Depending on the placement of the main unit, the screwing position of the screw eye may differ.

## When attaching the main unit to a wall

Make sure that the screw used and the wall are strong enough to support the weight of at least 33 kg (73 lbs). The screws and other items are not supplied as the type and size will vary with each installation.

- Refer to step 3 for details about the required screws.
- Be sure to attach the fall prevention cord as a secondary safety measure.

### Additionally required accessories (commercially available)

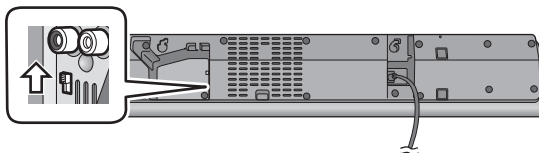
- |  |     |
|--|-----|
| • Screws for wall mounting .....                       | × 2 |
| • Fall prevention cord .....                           | × 1 |
| • Screw eye (to attach the fall prevention cord) ..... | × 1 |



- Use a cord that is capable of supporting over 10 kg (22 lbs) (with a diameter of about 2 mm ( $\frac{3}{32}$ )).

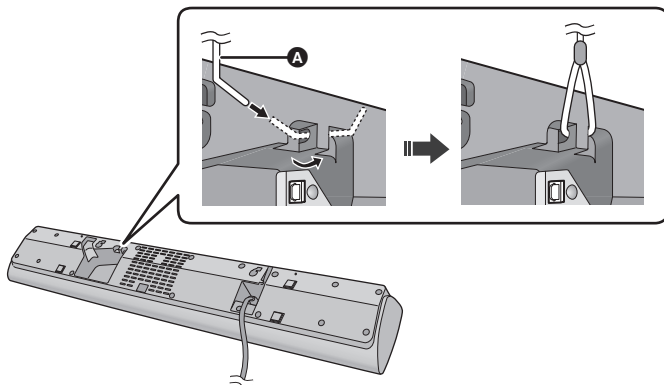
**1**

**Slide the MULTI ANGLE switch to “WALL MOUNT”.**



**2**

**Attach the cord to the main unit.**

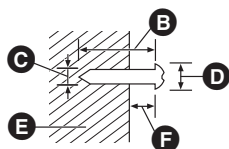


**A** Cord※

※ If the cord cannot be threaded through the holes, try bending the cord in 2 locations, about 5 mm ( $\frac{3}{16}$ ) apart from the tip, at an angle of 45° (as illustrated above).

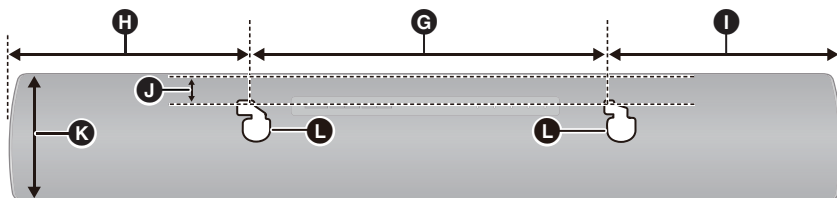
### 3 Drive a screw into the wall.

- Use the measurements indicated below to identify the screwing positions on the wall.
- Leave at least 20 mm ( $^{25/32}$ " ) of space above of the main unit to allow enough space for fitting the main unit.
- Leave at least 10 mm ( $^{13/32}$ " ) of space on both sides of the main unit. Without sufficient space, it is not possible to mount the main unit successfully.
- Be sure to use a level to insure that both mounting holes are level to each other.



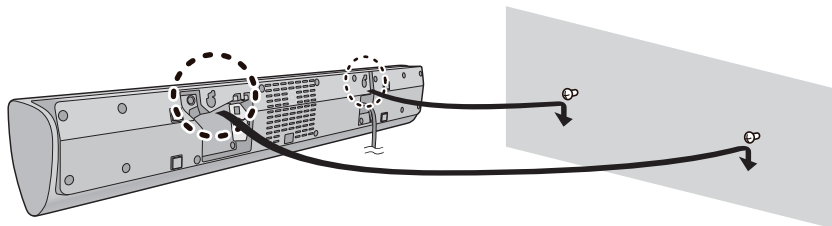
- B** At least 30 mm ( $1 \frac{3}{16}$ " )
- C**  $\varnothing 4.0$  mm ( $^{5/32}$ " )
- D**  $\varnothing 7.5$  mm to  $\varnothing 9.4$  mm ( $^{9/32}$ " to  $^{3/8}$ " )
- E** Wall or pillar
- F** 7.5 mm to 8.5 mm ( $^{7/32}$ " to  $^{11/32}$ " )

### Front view (semi-transparent image)



- G** 320 mm ( $12 \frac{19}{32}$ " )
- H** 215 mm ( $8 \frac{15}{32}$ " )
- I** 215 mm ( $8 \frac{15}{32}$ " )
- J** 15 mm ( $^{19/32}$ " )
- K** 115 mm ( $4 \frac{17}{32}$ " )
- L** Wall mounting hole

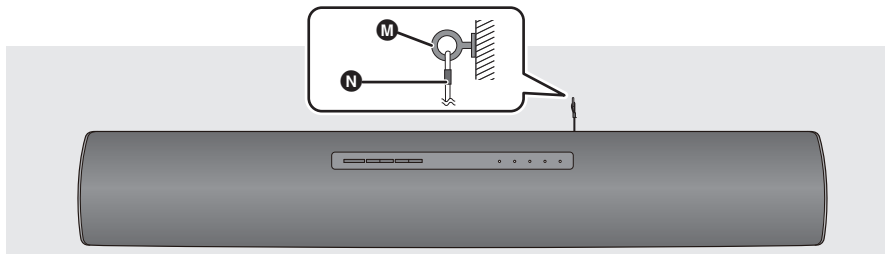
### 4 Fit the main unit securely onto the screw(s).



| DO  | DO NOT  |
|---|---|
| <ul style="list-style-type: none"> <li>• Move the speaker so that the screw is in this position.</li> </ul> | <ul style="list-style-type: none"> <li>• In this position, the speaker will likely fall if moved to the left or right.</li> </ul> |

### 5 Secure the cord to the wall.

- Make sure that the slack of the cord is minimal.

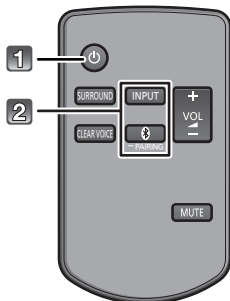


- M** Screw eye
- N** Cord

# Using this system

## Preparation

- Turn on the TV and/or connected device.



**1** Press [⏻] to turn on the main unit.

**2** Select the source.

| Press   | To select                               |
|---------|---|
| [INPUT] | “TV” → “BD/DVD”<br>↑ “Ⓜ” (Bluetooth®) ↓ |
| [Ⓜ]     | “Ⓜ” (Bluetooth®)                        |

- This remote control cannot be used to control the operations of the connected devices.

### ■ When “Ⓜ” is selected as the source

On the Bluetooth® device:

Select this system as the output source of the connected Bluetooth® device and start the playback.

### ■ When “BD/DVD” is selected as the source

On the TV and the connected device:

Select the TV's input for this system and start the playback on the connected device.



**If this system does not operate as expected or sound is unusual, returning the settings to the factory preset may solve the problem. (⇒ p. 17)**

- ※ BD/DVD indicator, Bluetooth® indicator and sound mode indicators blink from left to right (+) or from right to left (–) while adjusting. The indicators will not blink when it has reached the maximum or minimum.
- If there is sound coming out of the TV's speakers, reduce the volume of the TV to its minimum.
- If the main unit is turned off with the volume setting in the greater half (above 50), the main unit will automatically lower the volume to the middle (50) when the main unit is turned on (Volume limitation). To turn this function off, refer to page 16.

### ■ To adjust the volume of this system

Press [+ VOL –].

- Volume range: 0 to 100\*

### ■ To set the surround mode

You can enable/disable the surround effect.

Press [SURROUND].

- To cancel, press the button again.

### ■ To set the clear voice mode

With the clear voice mode you can hear dialogs clearer.

Press [CLEAR VOICE].

- To cancel, press the button again.

### ■ To mute the sound

Press [MUTE].

- While muting, all the indicators blink simultaneously.
- To cancel, press the button again or adjust the volume.
- Muting is canceled if the main unit is turned off.

# Advanced operations

## Auto Power Down

The main unit is automatically turned off if there is no audio input and when you do not use it for approx. 2 hours.

- 1 While pressing and holding [CLEAR VOICE] on the remote control, press and hold [INPUT] on the main unit for more than 4 sec to display the current setting.



"BD/DVD" indicator blinks:  
**Auto Power Down is on.**



"CLEAR VOICE" indicator blinks:  
**Auto Power Down is off.**

- 2 While the setting is displayed, press [CLEAR VOICE] to select the setting.

- The setting changes each time [CLEAR VOICE] is pressed.
- The indicator for the selected setting blinks for 20 sec and then exits the setting mode.
- The setting is maintained until it is changed again.
- Default setting of this function is off.

## Bluetooth® Stand-by

This function allows you to connect a paired Bluetooth® device when the main unit is in standby mode.

- 1 While pressing and holding [SURROUND] on the remote control, press and hold [8] on the main unit for more than 4 sec to display the current mode.



"BD/DVD" indicator blinks:  
**Bluetooth® Stand-by is on.**



"CLEAR VOICE" indicator blinks:  
**Bluetooth® Stand-by is off.**

- 2 While the mode is displayed, press [SURROUND] to select the mode.

- The setting changes each time [SURROUND] is pressed.
- The indicator for the selected setting blinks for 20 sec and then exits the setting mode.
- The setting is maintained until it is changed again.
- Default setting of this function is off.

## Dimmer mode

You can turn off dimmer mode and keep the LED indicators bright.

**While pressing and holding [INPUT] on the remote control, press and hold [– VOL] on the main unit for more than 4 sec to turn off Dimmer mode.**

- The indicator for the current condition will turn brighter.
- The setting is maintained until it is changed again.
- Default setting of this function is on.



To turn on dimmer mode, repeat the operation above. After performing the operation, the indicator for the current condition will be dim.

## Others

### ■ Remote control code

When other Panasonic devices respond to this system's remote control, change the remote control code on this system and the remote control.

#### Preparation

- Turn off all other Panasonic products.
- Turn on the main unit.

#### Change the remote control code to code 2:

- 1 Aim the remote control at the main unit's remote control sensor.
  - 2 Press and hold [MUTE] and [8] on the remote control for more than 4 sec.
- All the indicators will blink for 10 sec when the code of this system is changed.



- The setting is maintained until it is changed again.



- If the main unit does not operate after changing the code, repeat steps 1 and 2.
- To change the remote control code to code 1, repeat the steps above, but replace [8] with [INPUT].

### ■ To turn off the volume limitation

If a state of the lowered volume disturbs you every time the main unit turns on, for example, it is possible to turn off this function as follows:

While pressing and holding [MUTE] on the remote control, press and hold [VOL +] on the main unit for more than 4 sec.

- All the indicators will blink once when the volume limitation is turned off.



To reset the setting, return to the factory preset. (⇒ p. 17)



# Troubleshooting

Before requesting service, make the following checks. If you are in doubt about some of the check points, or if the solutions indicated in the following guide do not solve the problem, refer to "Customer Services Directory (United States)" on page 22.

## To return to the factory defaults.

While the main unit is on, press and hold [⏻/I] on the main unit for more than 4 sec.

(All the indicators will blink twice when this system is reset.)

**If this system does not operate as expected, returning the settings to the factory defaults may solve the problem.**

- The remote control code will return to "1" when this system is returned to the factory preset. To change the remote control code, refer to page 16.

## General operation

### No power.

- Insert the AC power supply cord securely. (⇒ p. 8)
- If the indicators blink and the main unit turns off immediately after you have turned it on, unplug the AC power supply cord and consult your dealer.

### The remote control does not work properly.

- The battery is depleted. Replace it with a new one. (⇒ p. 7)
- It is possible that the insulation sheet has not been removed. Remove the insulation sheet. (⇒ p. 7)
- It may be necessary to set the code of the remote control again after changing the battery of the remote control. (⇒ p. 16)
- Use the remote control within the correct operation range. (⇒ p. 7)

### The "TV" indicator blinks.

Unplug the AC power supply cord and consult your dealer. If other indicators are also blinking, be sure to inform your dealer of these indicators.

### The main unit is automatically switched to standby mode.

"Auto Power Down" function is on.

The main unit will automatically switch to standby mode when no signal is input and no operation is performed for approx. 2 hours. Refer to page 16 to turn this function off.

## Bluetooth®

### Pairing cannot be done.

Check the Bluetooth® device condition.

### The device cannot be connected.

- The pairing of the device was unsuccessful or the registration has been replaced. Try pairing the device again. (⇒ p. 9)
- This system might be connected to a different device. Disconnect the other device and try pairing the device again.

### The device is connected but audio cannot be heard through this system.

For some built-in Bluetooth® devices, you have to set the audio output to "SC-HTB8" manually. Read the operating instructions for the device for details.

### The sound is interrupted.

- The device is out of the 10 m (33 ft) communication range. Bring the Bluetooth® device closer to the main unit.
- Remove any obstacle between the main unit and the device.
- Other devices that use the 2.4 GHz frequency band (wireless router, microwaves, cordless phones, etc.) are interfering. Bring the Bluetooth® device closer to the main unit and distance it from the other devices.

### **No sound.**

- Turn muting off. (⇒ p. 15)
  - Check the connections to the other device. (⇒ p. 8)
  - Make sure that the received audio signal is compatible with this system. (⇒ p. 21)
  - Turn this system off and then on again.
  - If the connections are correct, there might be a problem with the cables. Redo the connections with different cables.
  - Check the audio output settings on the connected device.
- 

### **The volume is lowered when the main unit is turned on.**

If the main unit is turned off with the volume setting in the greater half (above 50), the main unit will automatically lower the volume to the middle (50) when the main unit is turned on. (⇒ p. 16)

---

### **The dialog is too persistent or the dialog does not sound natural.**

This system has a function to make the dialog stand out when the volume is low. (⇒ p. 15)

---

### **There is no audio.**

#### **The power of the main unit turns off automatically.**

(When the main unit detects a problem, a safety measure is activated and the main unit automatically switches to standby mode.)

- There is a problem with the amplifier.
- Is the volume extremely high?  
If so, lower the volume.
- Is this system placed in an extremely hot place?  
If so, move this system to a cooler place and wait a few moments and then try to turn it on again.

If the problem persists, check if the TV indicator and the BD/DVD indicator are blinking first. After checking the indicators, turn off this system, unplug the AC power supply cord, and consult your dealer. Make sure to remember which indicators were blinking and inform the dealer of them.

# About Bluetooth®

**Panasonic bears no responsibility for data and/or information that is compromised during a wireless transmission.**

## ■ Frequency band used

This system uses the 2.4 GHz frequency band.

## ■ Certification of this device

- This system conforms to frequency restrictions and has received certification based on frequency laws. Thus, a wireless permit is not necessary.
- The action below are punishable by law in some countries:
  - Taking apart or modifying the unit.
  - Removing specification indications.

## ■ Restrictions of use

- Wireless transmission and/or usage with all Bluetooth® equipped devices is not guaranteed.
- All devices must conform to standards set by Bluetooth SIG, Inc.
- Depending on the specifications and settings of a device, it can fail to connect or some operations can be different.
- This system supports Bluetooth® security features. But depending on the operating environment and/or settings, this security is possibly not sufficient. Transmit data wirelessly to this system with caution.
- This system cannot transmit data to a Bluetooth® device.

## ■ Range of use

Use this device at a maximum range of 10 m (33 ft). The range can decrease depending on the environment, obstacles or interference.

## ■ Interference from other devices

- This system may not function properly and troubles such as noise and sound jumps may arise due to radio wave interference if the main unit is located too close to other Bluetooth® devices or the devices that use the 2.4 GHz band.
- This system may not function properly if radio waves from a nearby broadcasting station, etc. are too strong.

## ■ Intended usage

- This system is for normal, general use only.
- Do not use this system near equipment or in an environment that is sensitive to radio frequency interference (example: airports, hospitals, laboratories, etc).

# Unit care

## ■ Clean this system with a soft, dry cloth

- When dirt is heavy, wring a cloth moistened in water tightly to wipe the dirt, and then wipe it with a dry cloth.
- Never use alcohol, paint thinner or benzene to clean this system.
- Before using chemically-treated cloth, carefully read the instructions that came with the cloth.

## ■ To dispose or transfer this system

This system may keep the user settings information in the main unit. If you discard the main unit either by disposal or transfer, then follow the procedure to return all the settings to the factory presets to delete the user settings. (⇒ p. 17, "To return to the factory defaults.")

- The operation history may be recorded in the memory of the main unit.

# License

The Bluetooth® word mark and logos are owned by the Bluetooth SIG, Inc. and any use of such marks by Panasonic Corporation is under license. Other trademarks and trade names are those of their respective owners.

# Indicator illumination

The indicators display the condition of this system by flashing. The indicator patterns illustrated below are displayed during normal operational conditions. They do not refer to the indications of a problem.

## Indicator



## Description

### The indicator blinks for 20 sec.

- When the setting is on  
(“Auto Power Down” and “Bluetooth® Stand-by”) (⇒ p. 16)

### The indicator blinks for 20 sec.

- When the setting is off  
(“Auto Power Down” and “Bluetooth® Stand-by”) (⇒ p. 16)

### The indicators blink for 10 sec.

- When the remote control code is changed (⇒ p. 16)

### The indicators blink once.

- When changing the setting  
(“To turn off the volume limitation”) (⇒ p. 16)

### The indicators blink twice.

- When the main unit is reset (⇒ p. 17)

### Bluetooth® indicator blinks quickly.

- When the main unit is ready for pairing (⇒ p. 9)

### Bluetooth® indicator blinks slowly.

- When the main unit is waiting to connect (⇒ p. 9)

### Bluetooth® indicator turns on.

- When the main unit is connected with a Bluetooth® device  
(⇒ p. 9)

# Specifications

## AMPLIFIER SECTION

|   |      |
|---|------|
| <b>RMS output power : Stereo mode</b>         |      |
| Front ch (non-simultaneous drive)             |      |
| 40 W per channel (1 kHz, 10 % THD, 8 Ω)       |      |
| <b>Total RMS Stereo mode power</b>            | 80 W |
| <b>FTC output power Stereo mode</b>           |      |
| Front ch (both ch driven)                     |      |
| 200 Hz-20 kHz 25 W per channel (1 % THD, 8 Ω) |      |
| <b>Total FTC Stereo mode power</b>            | 50 W |

## SPEAKER SECTION

|   |                               |
|---|-------------------------------|
| <b>FRONT SPEAKER (L/R)</b>                      |                               |
| Type  |                               |
| 1 way, 1 speaker system (passive radiator type) |                               |
| Unit(s)   | 8 cm × 2 (3 1/8") (Cone type) |
| Impedance                                       | 8 Ω                           |
| <b>Passive Radiator</b>                         |                               |
| Unit(s)   | 8 cm × 2 (3 1/8")             |

## Bluetooth® SECTION

|  |                                    |
|--|------------------------------------|
| <b>Bluetooth® system specification</b>   | Bluetooth® Version 3.0             |
| <b>Wireless equipment classification</b> | Class 2 (2.5 mW)                   |
| <b>Supported profiles</b>                | A2DP (with SCMS-T)                 |
| <b>Supported codec</b>                   | SBC                                |
| <b>Frequency band</b>                    | 2.4 GHz band FH-SS                 |
| <b>Operating distance</b>                | approx. 10 m (33 ft) Line of sight |

## TERMINALS SECTION

|                                    |  |
|------------------------------------|--|
| <b>Digital Audio Input (TV)</b>    |  |
| Optical digital input              | Optical terminal                           |
| <b>Sampling Frequency</b>          | 32 kHz, 44.1 kHz, 48 kHz, 88.2 kHz, 96 kHz |
| <b>Audio Format</b>                | LPCM                                       |
| <b>Analog Audio Input (BD/DVD)</b> |  |
| Audio input                        | Pin jack                                   |

## GENERAL

|  |  |
|--|--|
| <b>Power consumption</b>                 | 16 W   |
| <b>Power consumption in standby mode</b> | Approx. 0.5 W  |
| <b>Power supply</b>                      | AC 120 V, 60 Hz  |
| <b>For table top layout</b>              |  |
| Dimensions (W×H×D)                       | 750 × 65.5 × 118 mm<br>(29 17/32" × 2 19/32" × 4 21/32") |
| <b>For wall mounting layout</b>          |  |
| Dimensions (W×H×D)                       | 750 × 115 × 65 mm<br>(29 17/32" × 4 17/32" × 2 9/16")    |
| <b>Mass (Weight)</b>                     | Approx. 2.3 kg (5.07 lbs)                                |
| <b>Operating temperature range</b>       | 0 °C to +40 °C (+32 °F to +104 °F)                       |
| <b>Operating humidity range</b>          | 20 % to 80 % RH (no condensation)                        |



- Specifications are subject to change without notice.
- Mass and dimensions are approximate.
- Total harmonic distortion is measured by a digital spectrum analyzer.

# Limited Warranty (ONLY FOR U.S.A.)

## Panasonic Products Limited Warranty

### Limited Warranty Coverage (For USA Only)

If your product does not work properly because of a defect in materials or workmanship, Panasonic Corporation of North America (referred to as "the warrantor") will, for the length of the period indicated on the chart below, which starts with the date of original purchase ("warranty period"), at its option either (a) repair your product with new or refurbished parts, (b) replace it with a new or a refurbished equivalent value product, or (c) refund your purchase price. The decision to repair, replace or refund will be made by the warrantor.

| Product or Part Name  | Parts   | Labor          |
|---|---------|----------------|
| Home Theater Audio System                                       | 1 Year  | 1 Year         |
| All included Accessories<br>(Except Non-Rechargeable Batteries) | 90 Days | Not Applicable |
| Only Non-Rechargeable Batteries                                 | 10 Days | Not Applicable |

During the "Labor" warranty period there will be no charge for labor. During the "Parts" warranty period, there will be no charge for parts. This Limited Warranty excludes both parts and labor for non-rechargeable batteries, antennas, and cosmetic parts (cabinet). This warranty only applies to products purchased and serviced in the United States. This warranty is extended only to the original purchaser of a new product which was not sold "as is".

### Mail-In Service--Online Repair Request

#### Online Repair Request

To submit a new repair request and for quick repair status visit our Web Site at [www.panasonic.com/repair](http://www.panasonic.com/repair).

When shipping the unit, carefully pack, include all supplied accessories listed in the Owner's Manual, and send it prepaid, adequately insured and packed well in a carton box. When shipping Lithium Ion batteries please visit our Web Site at [www.panasonic.com/BatteryHandling](http://www.panasonic.com/BatteryHandling) as Panasonic is committed to providing the most up to date information. Include a letter detailing the complaint, a return address and provide a daytime phone number where you can be reached. A valid registered receipt is required under the Limited Warranty.

**IF REPAIR IS NEEDED DURING THE WARRANTY PERIOD, THE PURCHASER WILL BE REQUIRED TO FURNISH A SALES RECEIPT/ PROOF OF PURCHASE INDICATING DATE OF PURCHASE, AMOUNT PAID AND PLACE OF PURCHASE. CUSTOMER WILL BE CHARGED FOR THE REPAIR OF ANY UNIT RECEIVED WITHOUT SUCH PROOF OF PURCHASE.**

#### Limited Warranty Limits And Exclusions

This warranty ONLY COVERS failures due to defects in materials or workmanship, and DOES NOT COVER normal wear and tear or cosmetic damage. The warranty ALSO DOES NOT COVER damages which occurred in shipment, or failures which are caused by products not supplied by the warrantor, or failures which result from accidents, misuse, abuse, neglect, mishandling, misapplication, alteration, faulty installation, set-up adjustments, misadjustment of consumer controls, improper

maintenance, power line surge, lightning damage, modification, introduction of sand, humidity or liquids, commercial use such as hotel, office, restaurant, or other business or rental use of the product, or service by anyone other than a Factory Service Center or other Authorized Servicer, or damage that is attributable to acts of God.

**THERE ARE NO EXPRESS WARRANTIES EXCEPT AS LISTED UNDER "LIMITED WARRANTY COVERAGE". THE WARRANTOR IS NOT LIABLE FOR INCIDENTAL OR CONSEQUENTIAL DAMAGES RESULTING FROM THE USE OF THIS PRODUCT, OR ARISING OUT OF ANY BREACH OF THIS WARRANTY.**

(As examples, this excludes damages for lost time, travel to and from the servicer, loss of or damage to media or images, data or other memory or recorded content. The items listed are not exclusive, but for illustration only.) **ALL EXPRESS AND IMPLIED WARRANTIES, INCLUDING THE WARRANTY OF MERCHANTABILITY, ARE LIMITED TO THE PERIOD OF THE LIMITED WARRANTY.**

Some states do not allow the exclusion or limitation of incidental or consequential damages, or limitations on how long an implied warranty lasts, so the exclusions may not apply to you.

This warranty gives you specific legal rights and you may also have other rights which vary from state to state. If a problem with this product develops during or after the warranty period, you may contact your dealer or Service Center. If the problem is not handled to your satisfaction, then write to the warrantor's Consumer Affairs Department at the addresses listed for the warrantor.

**PARTS AND SERVICE, WHICH ARE NOT COVERED BY THIS LIMITED WARRANTY, ARE YOUR RESPONSIBILITY.**

#### Customer Services Directory (United States)

**Obtain Product Information and Operating Assistance; locate your nearest Dealer or Service Center; purchase Parts and Accessories; or make Customer Service and Literature requests by visiting our Web Site at:**  
<http://www.panasonic.com/support>  
or, contact us via the web at:  
<http://www.panasonic.com/contactinfo>

**For hearing or speech impaired TTY users, TTY: 1-877-833-8855**

#### Accessory Purchases (United States)

Purchase Parts, Accessories and Owner's Manual online for all Panasonic Products by visiting our Web Site at:  
<http://www.pstc.panasonic.com>  
Or, send your request by E-mail to:  
[npcparts@us.panasonic.com](mailto:npcparts@us.panasonic.com)  
You may also contact us directly at:  
1-800-237-9080 (Fax Only)  
(Monday-Friday 9am-9pm EST)  
Panasonic National Parts Center  
20421 84th Avenue South, Kent, WA 98032  
(We accept Visa, MasterCard, Discover Card, American Express)

**For hearing or speech impaired TTY users, TTY: 1-866-605-1277**

**As of April 2014**

#### User memo:

DATE OF PURCHASE \_\_\_\_\_  
DEALER NAME \_\_\_\_\_  
DEALER ADDRESS \_\_\_\_\_  
TELEPHONE NUMBER \_\_\_\_\_

The model number and serial number of this product can be found on either the back or the bottom of the unit. Please note them in the space provided below and keep for future reference.

MODEL NUMBER SC-HTB8  
SERIAL NUMBER \_\_\_\_\_



**-If you see this symbol-**

**Information on Disposal in other Countries outside the European Union**



This symbol is only valid in the European Union.  
If you wish to discard this product, please contact  
your local authorities or dealer and ask for the  
correct method of disposal.

---

**Panasonic Corporation of North America**

Two Riverfront Plaza, Newark, NJ 07102-5490

***<http://www.panasonic.com>***

En

© Panasonic Corporation 2014

Printed in China



YOM2001630001

VQT5J41  
F0314KE0