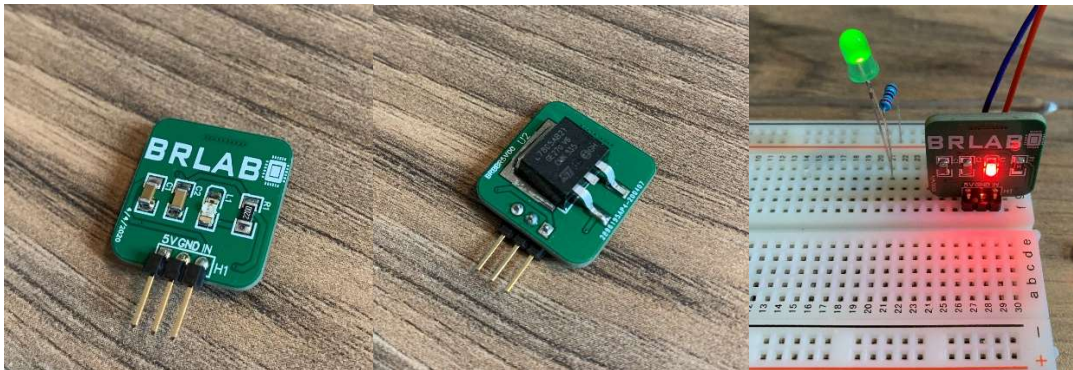


BREADBOARD 5V REGULATOR POWER SUPPLY DATASHEET

Description

The purpose of this device is to be used on breadboard when prototyping circuits. It gets tiring having to add a voltage regulator and the filtering capacitors each time. Instead just place this small PCB in your breadboard and connect a power source and ground and you will get a steady and clean 5V output, right there ready to go on your bread board. This device offers a quick and easy way to provide your prototyping circuits with the power they will need. Its basically a breadboard power supply!



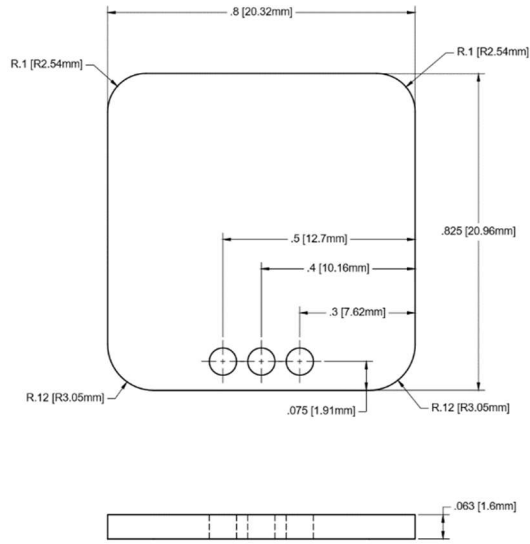
Applications

- Breadboard Prototyping
- DIY Electronics

Specifications

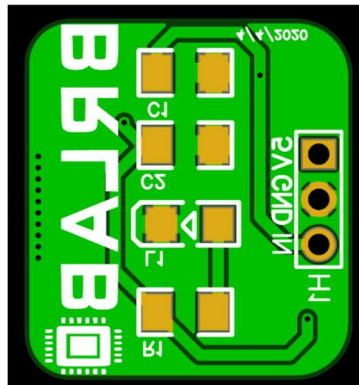
- Voltage Regulator
- Voltage Input: 35V max
- Recommended Voltage Input: 12V
- Current Rating 1.5A max
- Dimensions: 0.8" X 0.825"
- Leadfree HASL Surface Finish

Dimensional Specifications

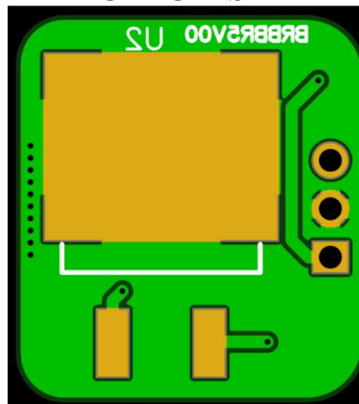


Board Layout

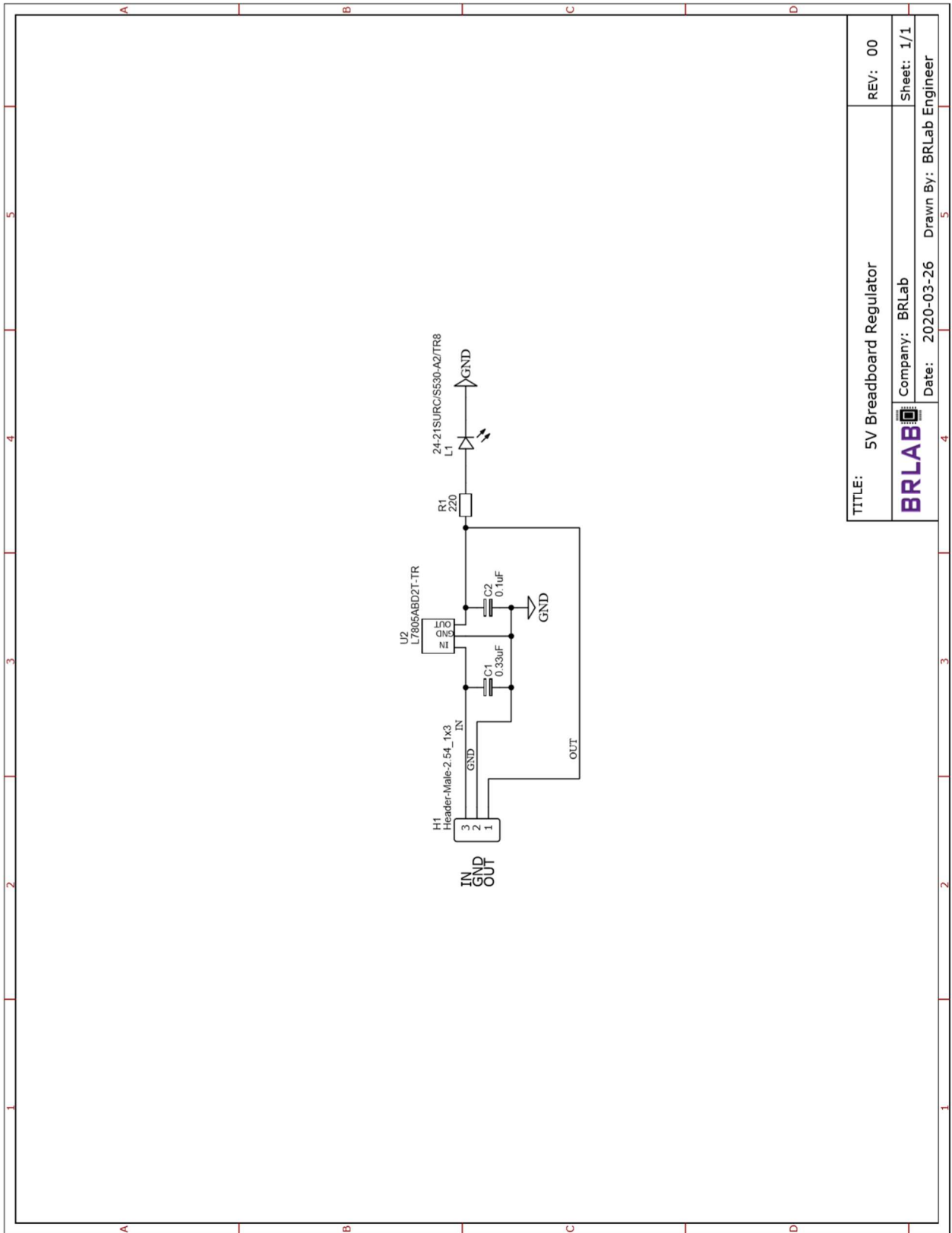
TOP SIDE




BOTTOM SIDE



Schematic



TITLE: 5V Breadboard Regulator	REV: 00
 BRLAB	Company: BRLab
Date: 2020-03-26	Drawn By: BRLab Engineer
	Sheet: 1/1

Revision Changes

V00 – Initial Release

Contact Info

For comments or concerns feel free to send them to brlabelectronics@gmail.com.
Please be sure to follow us on Instagram @brlabelectronics.