



Product End-of-Life Disassembly Instructions

Product Category: Notebooks and Tablet PCs

Marketing Name / Model

[List multiple models if applicable.]

HP EliteBook 848 G4 Notebook PC

Purpose: The document is intended for use by end-of-life recyclers or treatment facilities. It provides the basic instructions for the disassembly of HP products to remove components and materials requiring selective treatment, as defined by EU directive 2002/96/EC, Waste Electrical and Electronic Equipment (WEEE).

1.0 Items Requiring Selective Treatment

1.1 Items listed below are classified as requiring selective treatment.

1.2 Enter the quantity of items contained within the product which require selective treatment in the right column, as applicable.

Item Description	Notes	Quantity of items included in product
Printed Circuit Boards (PCB) or Printed Circuit Assemblies (PCA)	With a surface greater than 10 sq cm	6
Batteries	All types including standard alkaline and lithium coin or button style batteries	2
Mercury-containing components	For example, mercury in lamps, display backlights, scanner lamps, switches, batteries	0
Liquid Crystal Displays (LCD) with a surface greater than 100 sq cm	Includes background illuminated displays with gas discharge lamps	1
Cathode Ray Tubes (CRT)		0
Capacitors / condensers (Containing PCB/PCT)		0
Electrolytic Capacitors / Condensers measuring greater than 2.5 cm in diameter or height		0
External electrical cables and cords		0
Gas Discharge Lamps		0
Plastics containing Brominated Flame Retardants weighing > 25 grams (not including PCBs or PCAs already listed as a separate item above)		0
Components and parts containing toner and ink, including liquids, semi-liquids (gel/paste) and toner	Include the cartridges, print heads, tubes, vent chambers, and service stations.	0
Components and waste containing asbestos		0
Components, parts and materials containing refractory ceramic fibers		0

Components, parts and materials containing radioactive substances		0
---	--	---

2.0 Tools Required

List the type and size of the tools that would typically be used to disassemble the product to a point where components and materials requiring selective treatment can be removed.

Tool Description	Tool Size (if applicable)
Screwdriver #1	Electric cross screwdriver
Description #2	TORX T8 (2.31mm)
Description #3	D73 1 * 3.0 * 20 * 40
Description #4	
Description #5	

3.0 Product Disassembly Process

3.1 List the basic steps that should typically be followed to remove components and materials requiring selective treatment:

1. Follow steps described in Disassembly instruction (file attached)
2. If parts can be removed without using a tool, remove it first
3. Use correct screwdriver and torque value before unlock the screw.
- 4.
- 5.
- 6.
- 7.
- 8.
- 9.

3.2 Optional Graphic. If the disassembly process is complex, insert a graphic illustration below to identify the items contained in the product that require selective treatment (with descriptions and arrows identifying locations).

MANUFACTURING PROCESS INSTRUCTIONS

MECHANICAL ASSEMBLY

MODEL : Connery/Travolta

Sub-assembly name:	FA DIS ASS'Y		
Document No.:	Connery/Travolta 14" & 15" FA DIS ASS'Y SOP		
Written by:	Vick Weng	Revision:	0.1
Date:	2016/10/26	Page:	1

A. Current station version list

Station	Ver.	Station	Ver.	Station	Ver.	Station	Ver.
1	0.1	10	0.1	19	0.1	28	0.1
2	0.1	11	0.1	20	0.1	29	0.1
3	0.1	12	0.1	21	0.1	30	0.1
4	0.1	13	0.1	22	0.1	31	0.1
5	0.1	14	0.1	23	0.1	32	0.1
6	0.1	15	0.1	24	0.1		
7	0.1	16	0.1	25	0.1		
8	0.1	17	0.1	26	0.1		
9	0.1	18	0.1	27	0.1		

B. Version Modify list

Revision	Date	Station	Content	Ver.	Design
0.1	2016/10/26	ALL	FIRST VERSION	0.1	Vick Weng

Auditor : C.S. Lee Tabulator : Vick Weng



Standard Operation Procedure

Document No. Connery Travolta 14" & 15" FA DIS ASS'Y SOP Station : 1(1/1)
Name :Disassemble SD Dummy & Rubber Ver. : 0.1 Date : 2016/10/26

- Step :
- 1. Disassemble SD Dummy Card.
 - 2. Remove rubber A/B/C/D/F.

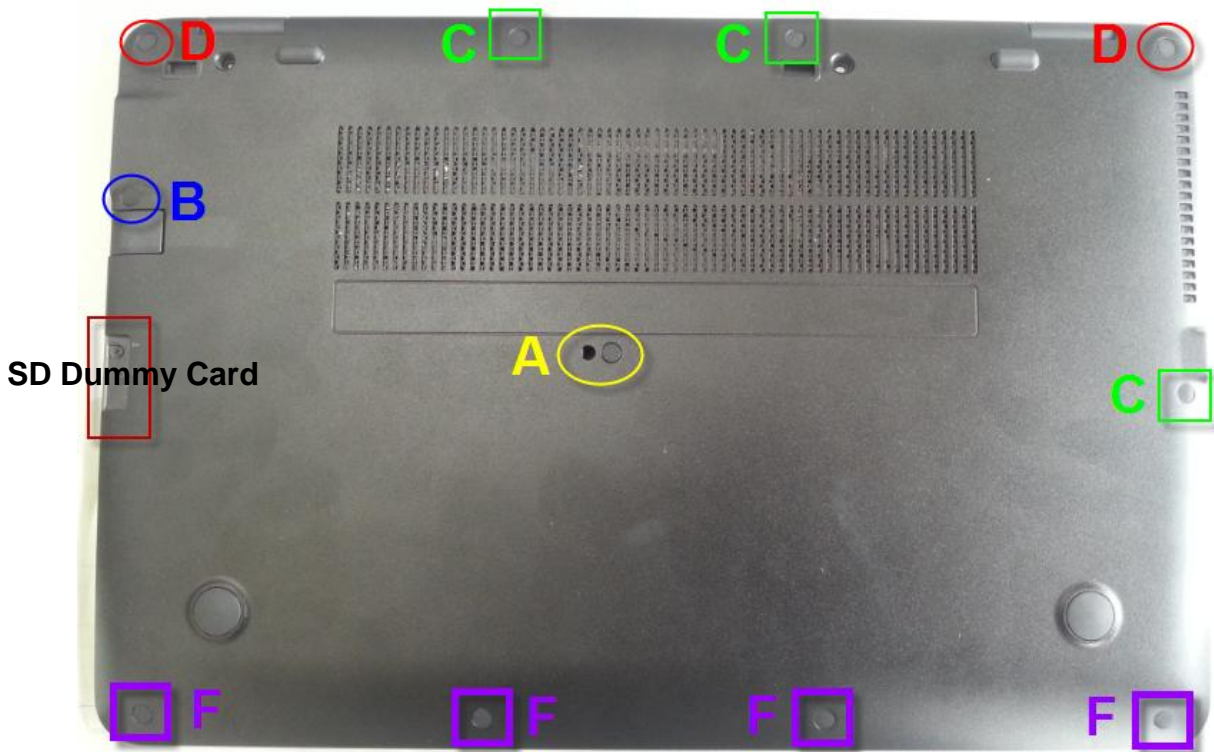


Fig.1

Notes : If finding anything uncommon, notice foreman or assistant at once.

Holding fixture list (holding fixture standard)	Qty	Holding fixture list (holding fixture standard)	Qty
Tweezers	1		

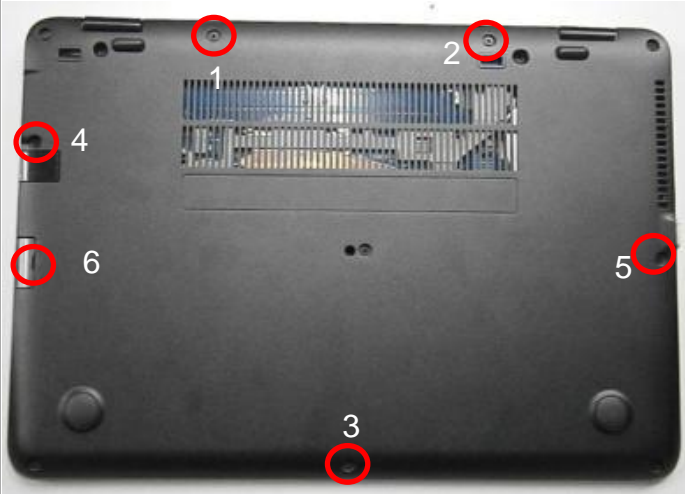


Standard Operation Procedure

Document No. Connery Travolta 14" & 15" FA DIS ASS'Y SOP Station : 2(1/1)
Name : Loosen Bottom Case Screws Ver. : 0.1 Date : 2016/10/26

14"

Step :



- 1. Loosen screw * 6. (14")
- 2. Loosen screw * 7. (15")

Fig.1

15"

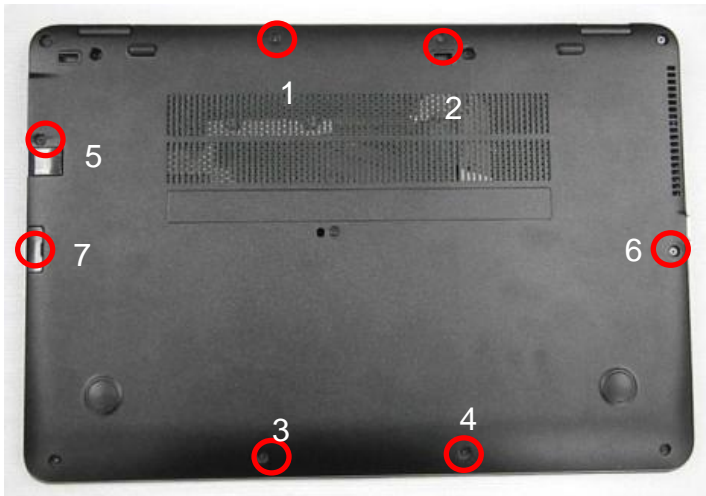


Fig.2

Notes : If finding anything uncommon, notice foreman or assistant at once.

Holding fixture list (holding fixture standard)	Qty	Holding fixture list (holding fixture standard)	Qty
Electric cross screwdriver (#1)	1		



Standard Operation Procedure

Document No. Connery Travolta 14" & 15" FA DIS ASS'Y SOP Station : 3(1/1)
Name : Loosen Bottom Case Screws Ver. : 0.1 Date : 2016/10/26

14"



Fig.1

Step :

1. Loosen screw * 5. (14")
2. Loosen screw * 5. (15")

15"



Fig.2

Notes : If finding anything uncommon, notice foreman or assistant at once.

Holding fixture list (holding fixture standard)	Qty	Holding fixture list (holding fixture standard)	Qty
Electric cross screwdriver (#1)	1		



Standard Operation Procedure

Document No. Connery Travolta 14" & 15" FA DIS ASS'Y SOP Station : 4(1/1)
Name : Disassemble Bottom Case Ver. : 0.1 Date : 2016/10/26

Step :

- 1. Disassemble bottom case. (Fig.1)
- 2. Put the bottom case in box. (Fig.2)

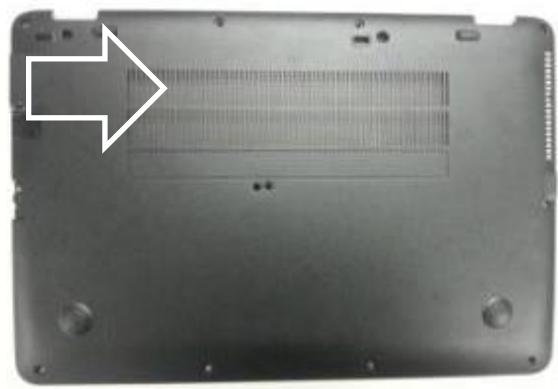


Fig.1

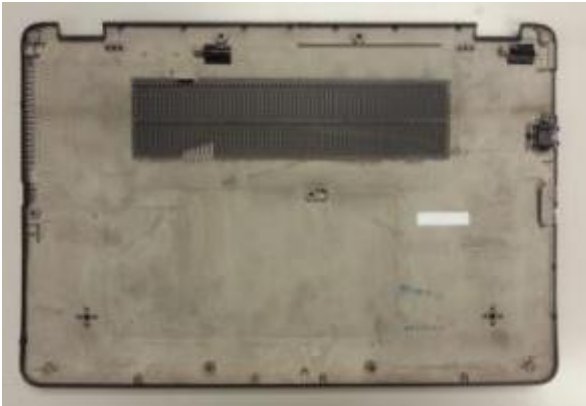


Fig.2

Notes : If finding anything uncommon, notice foreman or assistant at once.

Holding fixture list (holding fixture standard)	Qty	Holding fixture list (holding fixture standard)	Qty



Standard Operation Procedure

Document No. Connery Travolta 14" & 15" FA DIS ASS'Y SOP Station : 5(1/1)
Name : Disassemble Battery Ver. : 0.1 Date : 2016/10/26

- Step :
- 1. Loosen battery screw * 2.
 - 2. Disassemble battery by pulling the strap.



Fig.1

Notes : If finding anything uncommon, notice foreman or assistant at once.

Holding fixture list (holding fixture standard)	Qty	Holding fixture list (holding fixture standard)	Qty
Electric cross screwdriver (#1)	1		



Standard Operation Procedure

Document No. Connery Travolta 14" & 15" FA DIS ASS'Y SOP Station : 6(1/1)
Name : Loosen HDD Set Screws Ver. : 0.1 Date : 2016/10/26

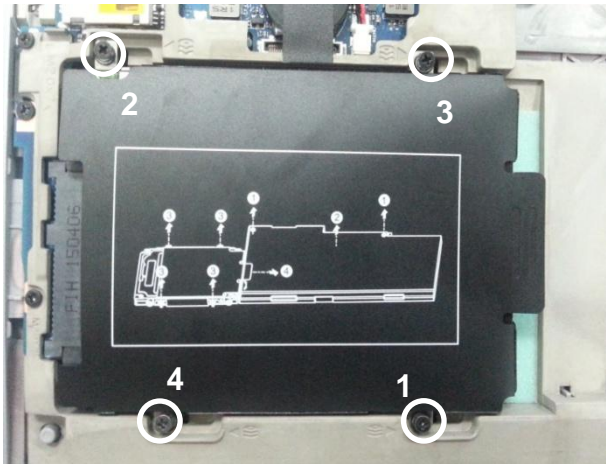


Fig.1

- Step :
1. Loosen HDD set screw * 4. (Fig.1)

Notes : If finding anything uncommon, notice foreman or assistant at once.

Holding fixture list (holding fixture standard)	Qty	Holding fixture list (holding fixture standard)	Qty
Electric cross screwdriver (#1)	1		



Standard Operation Procedure

Document No. Connery Travolta 14" & 15" FA DIS ASS'Y SOP Station : 7(1/1)
Name : Loosen HDD BRKT Screws Ver. : 0.1 Date : 2016/10/26



Fig.1

- Step :
1. Slide the HDD mylar strap to the right. (Fig.1)
 2. Loosen HDD BRKT screw* 4. (Fig.2/ Fig.3)
 3. Take out the HDD.



Fig.2



Fig.3

Notes : If finding anything uncommon, notice foreman or assistant at once.

Holding fixture list (holding fixture standard)	Qty	Holding fixture list (holding fixture standard)	Qty
Electric cross screwdriver (#1)	1		



Standard Operation Procedure

Document No. Connery Travolta 14" & 15" FA DIS ASS'Y SOP Station : 8(1/1)
Name : Disassemble DDR Ver. : 0.1 Date : 2016/10/26



Fig.1

- Step :
- 1. Disassemble DDR. (Fig.1)

Notes : If finding anything uncommon, notice foreman or assistant at once.

Holding fixture list (holding fixture standard)	Qty	Holding fixture list (holding fixture standard)	Qty



Standard Operation Procedure

Document No. Connery Travolta 14" & 15" FA DIS ASS'Y SOP

Station : 10(1/1)

Name : Loosen K/B Screws

Ver. : 0.1

Date : 2016/10/26

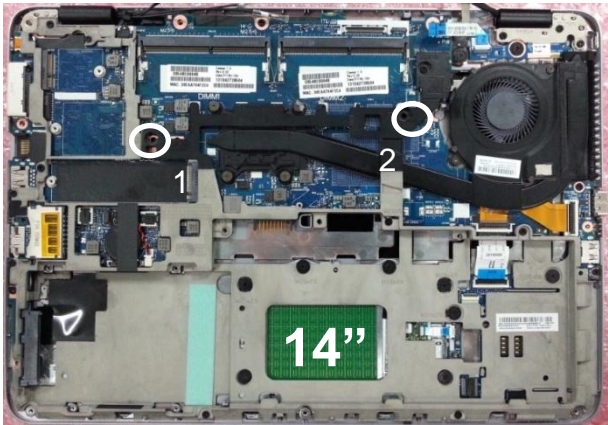


Fig.1

- Step :
1. Loosen K/B screw.
14" * 2. (Fig.1)
15" * 4. (Fig.2)
2. Poke the position marked in white square.
(Fig.3)

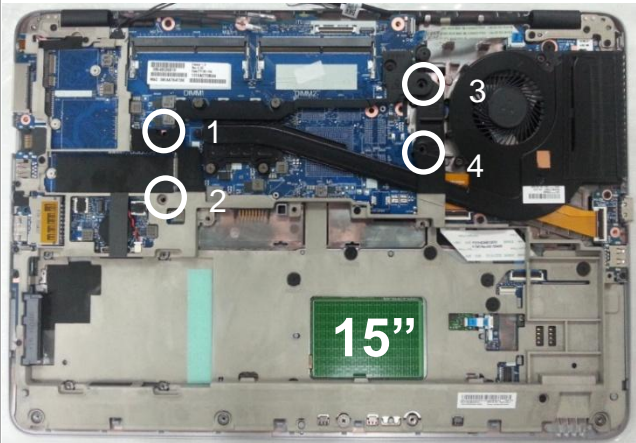


Fig.2

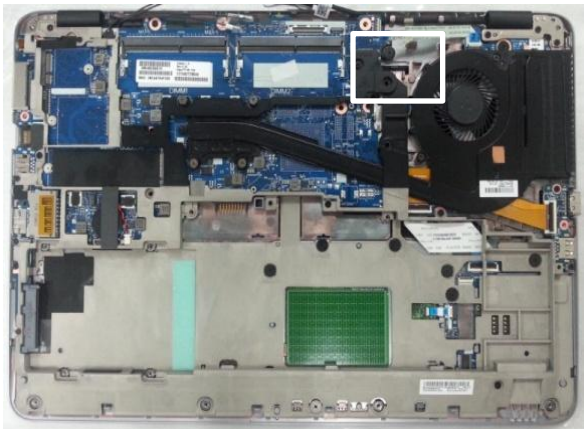


Fig.3

Notes : If finding anything uncommon, notice foreman or assistant at once.

Holding fixture list (holding fixture standard)	Qty	Holding fixture list (holding fixture standard)	Qty
Electric cross screwdriver (#1)	1		



Standard Operation Procedure

Document No. Connery Travolta 14" & 15" FA DIS ASS'Y SOP Station : 11(1/2)
Name : Disassemble Keyboard Ver. : 0.1 Date : 2016/10/26



Fig.1

- Step :
1. Turn the notebook over.
 2. Disassemble keyboard. (Fig.1)

Notes : If finding anything uncommon, notice foreman or assistant at once.

Holding fixture list (holding fixture standard)	Qty	Holding fixture list (holding fixture standard)	Qty



Standard Operation Procedure

Document No. Connery Travolta 14" & 15" FA DIS ASS'Y SOP Station : 11(2/2)
Name : Disassemble FFC Ver. : 0.1 Date : 2016/10/26

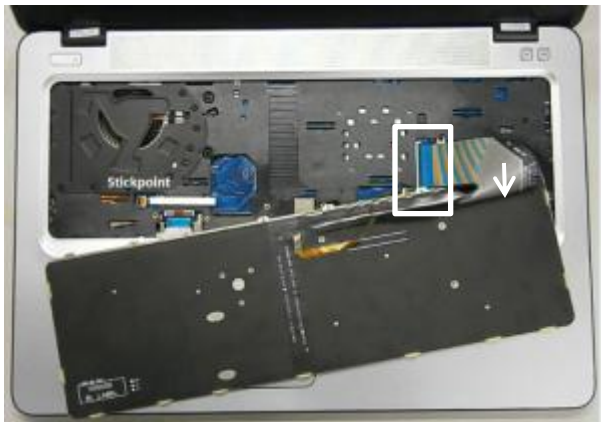


Fig.1

- Step :
1. Disassemble KB FFC. (Fig.1)
 2. Disassemble stick point FFC, backlight FFC. (Fig.2 / Fig.3 / Fig.4)



Fig.2



Fig.3



Fig.4

Notes : If finding anything uncommon, notice foreman or assistant at once.

Holding fixture list (holding fixture standard)	Qty	Holding fixture list (holding fixture standard)	Qty



Standard Operation Procedure

Document No. Connery Travolta 14" & 15" FA DIS ASS'Y SOP Station : 12(1/1)
Name : Rip Mylar Ver. : 0.1 Date : 2016/10/26

- Step :
- 1. Rip mylar * 2 from keyboard.
 - 2. Rip mylar * 1 from keyboard.
 - 3. Put the Keyboard in box.



Fig.1

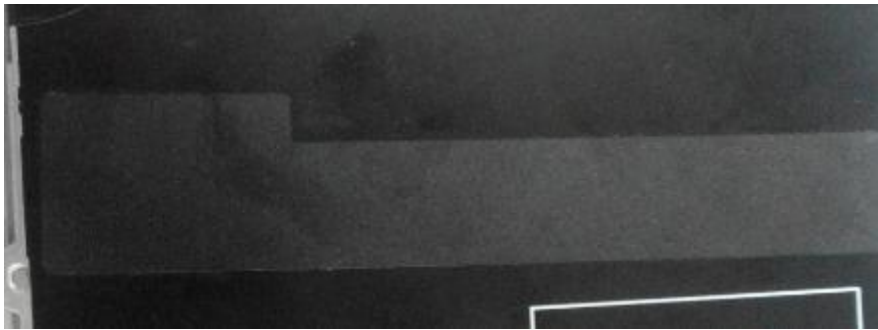


Fig.2

Notes : If finding anything uncommon, notice foreman or assistant at once.

Holding fixture list (holding fixture standard)	Qty	Holding fixture list (holding fixture standard)	Qty
Tweezers	1		



Standard Operation Procedure

Document No. Connery Travolta 14" & 15" FA DIS ASS'Y SOP Station : 13(1/1)
Name : Disassemble F/P FFC Ver. : 0.1 Date : 2016/10/26

- Step :
- 1. Disassemble F/P FFC.
 - 2. Turn the notebook over.



Fig.1

Notes : If finding anything uncommon, notice foreman or assistant at once.

Holding fixture list (holding fixture standard)	Qty	Holding fixture list (holding fixture standard)	Qty



Standard Operation Procedure

Document No. Connery Travolta 14" & 15" FA DIS ASS'Y SOP Station : 14(1/1)
Name : Disassemble WWAN Antenna Ver. : 0.1 Date : 2016/10/26

- Step :
- 1. Rip acid tape. (Fig.1/Fig.2)
 - 2. Disassemble antenna plug from WWAN module. (Fig.3/ Fig.4)

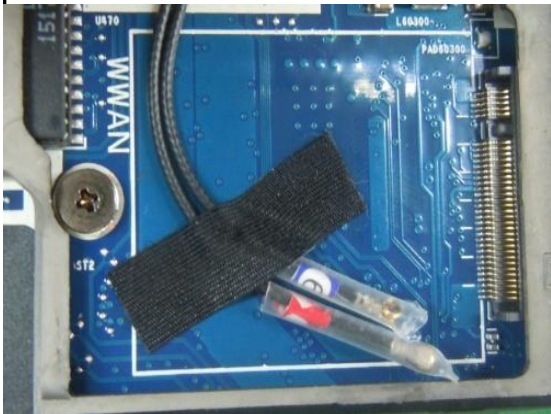


Fig.1



Fig.2



Fig.3



Fig.4

Notes : If finding anything uncommon, notice foreman or assistant at once.

Holding fixture list (holding fixture standard)	Qty	Holding fixture list (holding fixture standard)	Qty



Standard Operation Procedure

Document No. Connery Travolta 14" & 15" FA DIS ASS'Y SOP

Station : 15(1/1)

Name : Disassemble WWAN Card

Ver. : 0.1

Date : 2016/10/26

Step :

1. Loosen screw * 1. (Fig.1/Fig.2)

2. Disassemble WWAN card. (Fig.3)



Fig.1

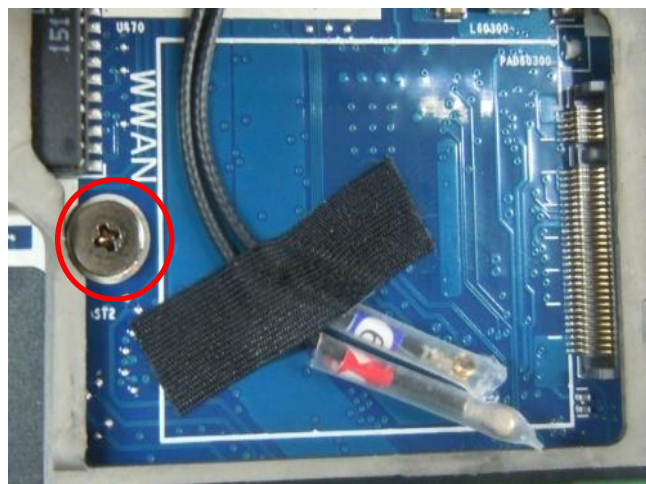


Fig.2



Fig.3

Notes : If finding anything uncommon, notice foreman or assistant at once.

Holding fixture list (holding fixture standard)	Qty	Holding fixture list (holding fixture standard)	Qty
Electric cross screwdriver (#1)	1		

Tabulator : Vick Weng

Auditor : C.S. Lee

Issue department : NPSU-PPE



Standard Operation Procedure

Document No. Connery Travolta 14" & 15" FA DIS ASS'Y SOP

Station : 16(1/1)

Name : Disassemble WLAN Card

Ver. : 0.1

Date : 2016/10/26



Fig.1

Step :

1. Disassemble antenna plug from WLAN module. . (Fig.1)
2. Loosen screw * 1. (Fig.2)
3. Disassemble WLAN card. (Fig.3)



Fig.2



Fig.3

Notes : If finding anything uncommon, notice foreman or assistant at once.

Holding fixture list (holding fixture standard)	Qty	Holding fixture list (holding fixture standard)	Qty
Electric cross screwdriver (#1)	1		

Tabulator : Vick Weng

Auditor : C.S. Lee

Issue department : NPSU-PPE



Standard Operation Procedure

Document No. Connery Travolta 14" & 15" FA DIS ASS'Y SOP Station : 18(1/1)
Name : Disassemble Power/B FFC Ver. : 0.1 Date : 2016/10/26

- Step :
1. Disassemble power button/B FFC from M/B CNTR. (Fig.1/Fig.2)

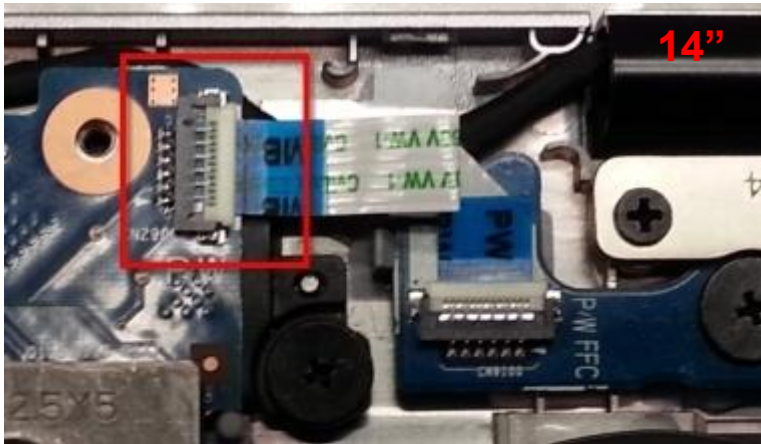


Fig.1



Fig.2

Notes : If finding anything uncommon, notice foreman or assistant at once.

Holding fixture list (holding fixture standard)	Qty	Holding fixture list (holding fixture standard)	Qty



Standard Operation Procedure

Document No. Connery Travolta 14" & 15" FA DIS ASS'Y SOP Station : 19(1/1)
Name : Disassemble e.DP Cable Ver. : 0.1 Date : 2016/10/26

- Step :
- 1. Rip the gasket that is on e.DP cable. (Fig.1)
 - 2. Disconnect e.DP cable & touch cable from M/B CNTR. (Fig.2)
 - 3. Disassemble e.DP cable & touch cable from hook. (Fig.3)

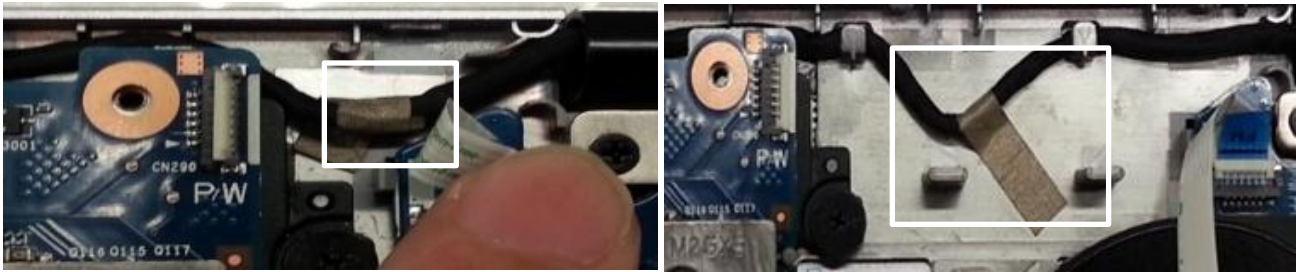


Fig.1

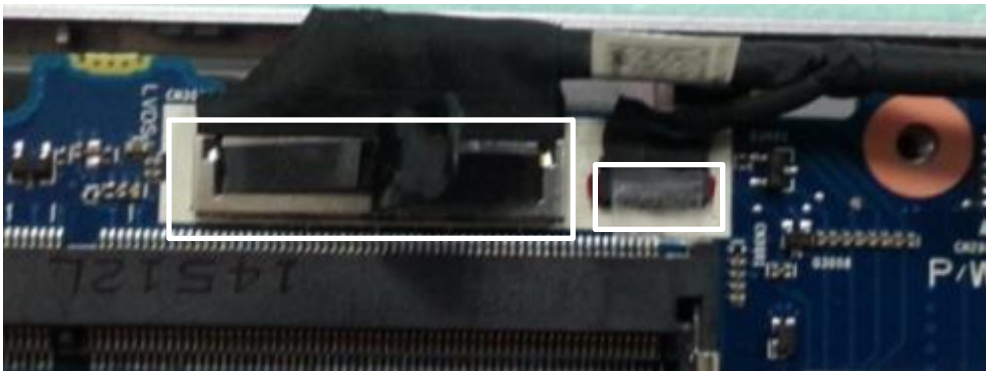


Fig.2

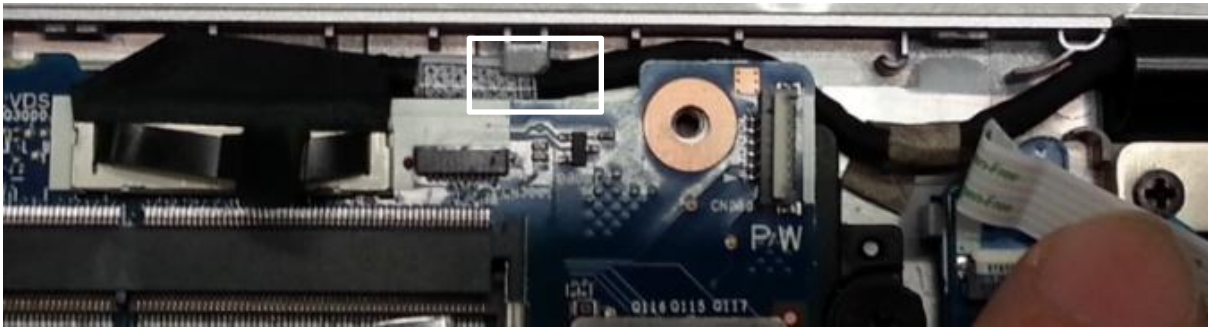


Fig.3

Notes : If finding anything uncommon, notice foreman or assistant at once.

Holding fixture list (holding fixture standard)	Qty	Holding fixture list (holding fixture standard)	Qty



Standard Operation Procedure

Document No. Connery Travolta 14" & 15" FA DIS ASS'Y SOP Station : 20(1/1)
Name : Loosen Screws Ver. : 0.1 Date : 2016/10/26

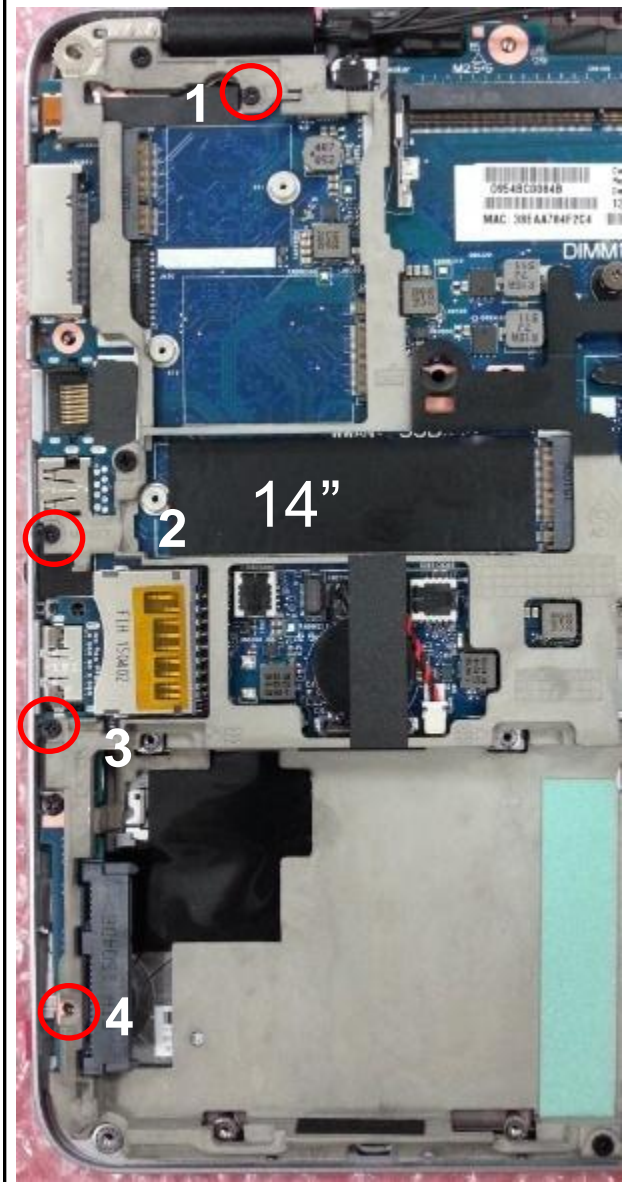


Fig.1

- Step :
- 1. Loosen screw * 4. (14")
 - 2. Loosen screw * 4. (15")

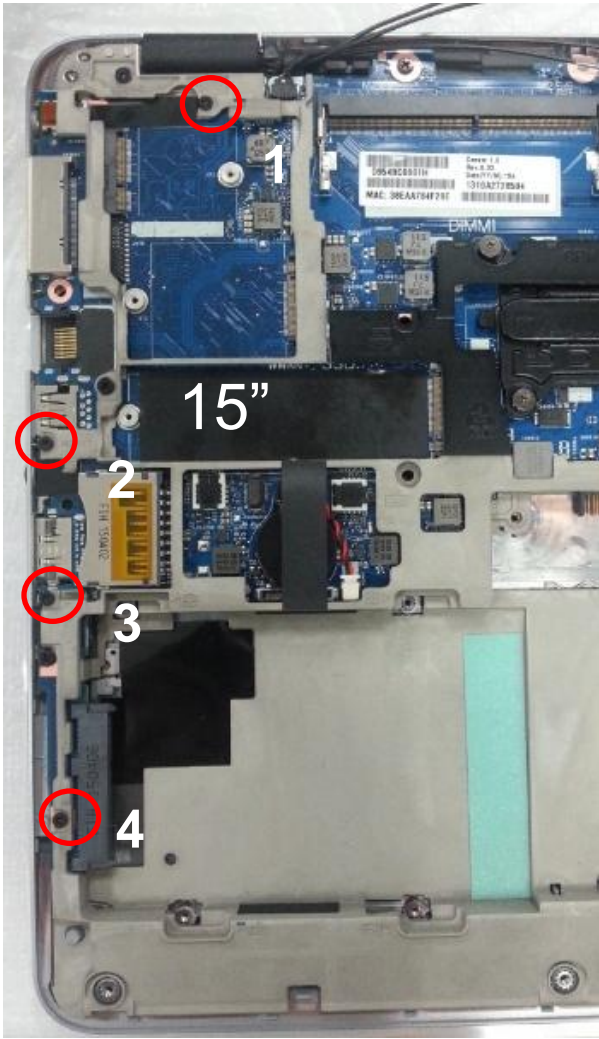


Fig.2

Notes : If finding anything uncommon, notice foreman or assistant at once.

Holding fixture list (holding fixture standard)	Qty	Holding fixture list (holding fixture standard)	Qty
Electric cross screwdriver (#1)	1		



Standard Operation Procedure

Document No. Connery Travolta 14" & 15" FA DIS ASS'Y SOP

Station : 21(1/1)

Name : Loosen Screws

Ver. : 0.1

Date : 2016/10/26

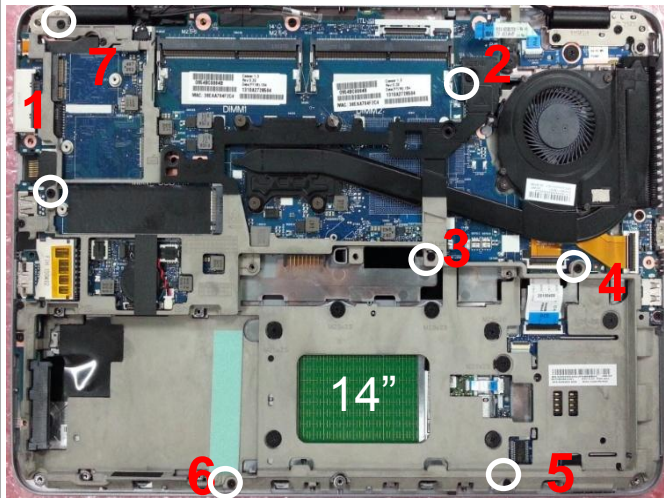


Fig.1

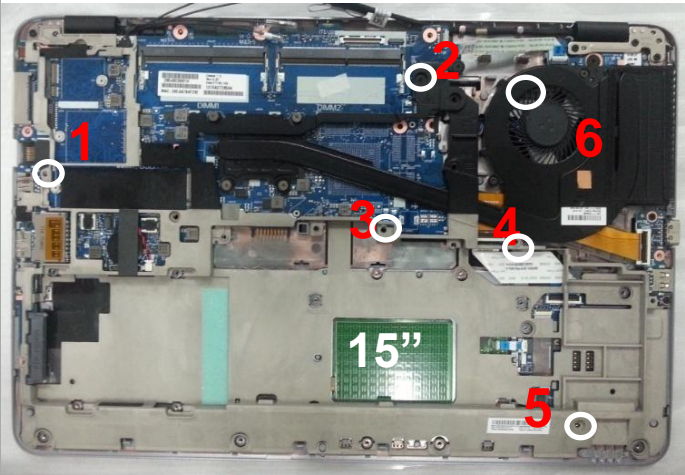


Fig.2

Notes : If finding anything uncommon, notice foreman or assistant at once.

Holding fixture list (holding fixture standard)	Qty	Holding fixture list (holding fixture standard)	Qty
Electric cross screwdriver (#1)	1		



Standard Operation Procedure

Document No. Connery Travolta 14" & 15" FA DIS ASS'Y SOP Station : 22(1/1)
Name : Loosen Screws & Disassemble Frame Ver. : 0.1 Date : 2016/10/26

- Step :
- 1. Loosen screw * 4. (14")
Loosen screw * 5. (15")
 - 2. Disassemble frame.



Fig.1 : 14"

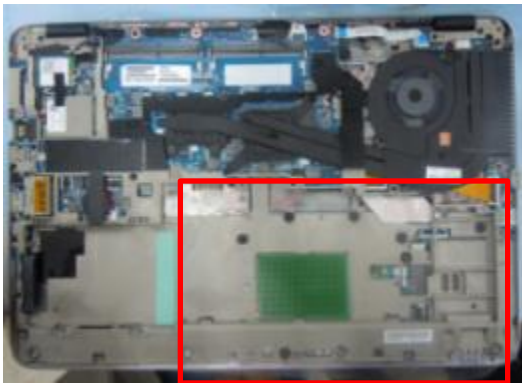
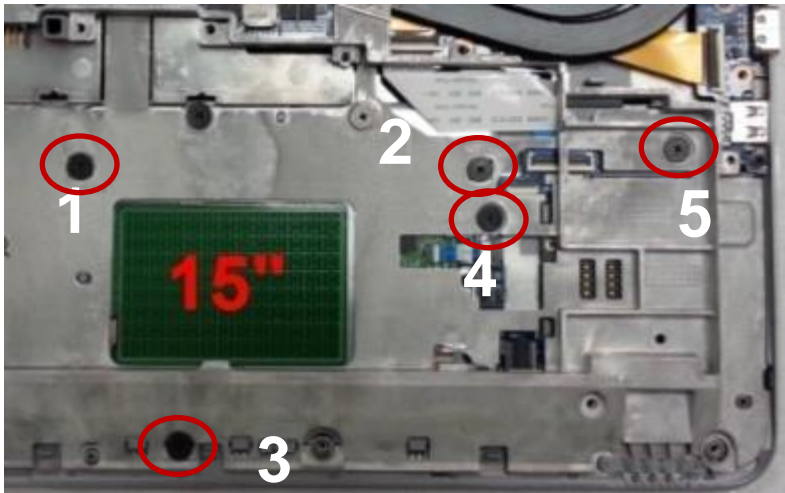


Fig.2 : 15"



Notes : If finding anything uncommon, notice foreman or assistant at once.

Holding fixture list (holding fixture standard)	Qty	Holding fixture list (holding fixture standard)	Qty
Electric cross screwdriver (#1)	1		



Standard Operation Procedure

Document No. Connery Travolta 14" & 15" FA DIS ASS'Y SOP Station : 23(1/1)
Name : Disassemble Smart Card Board FFC Ver. : 0.1 Date : 2016/10/26

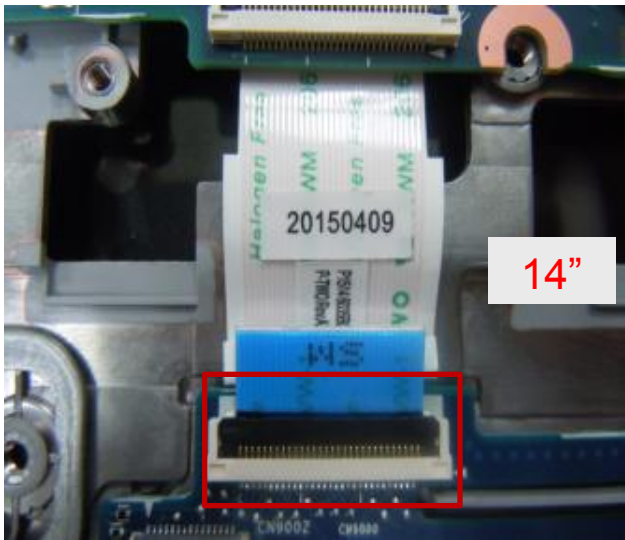


Fig.2



Fig.3

- Step :
1. Disassemble smart card FFC. (Fig.1 / Fig.2)

Notes : If finding anything uncommon, notice foreman or assistant at once.

Holding fixture list (holding fixture standard)	Qty	Holding fixture list (holding fixture standard)	Qty



Standard Operation Procedure

Document No. Connery Travolta 14" & 15" FA DIS ASS'Y SOP

Station : 24(1/1)

Name : Loosen Screws & Disassemble Cable Ver. : 0.1

Date : 2016/10/26

Step :

1. Loosen fan set screw * 2. (Fig.1)
2. Disassemble speaker cable from M/B CNTR. (Fig.2)
3. Disassemble FAN cable from hook. (Fig.1)

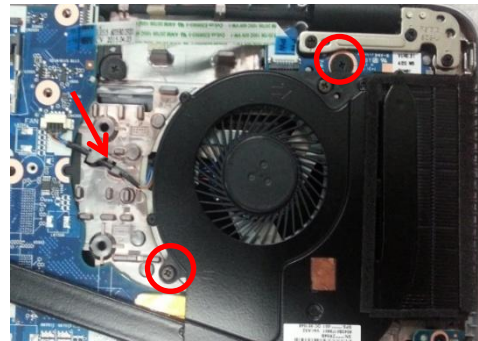
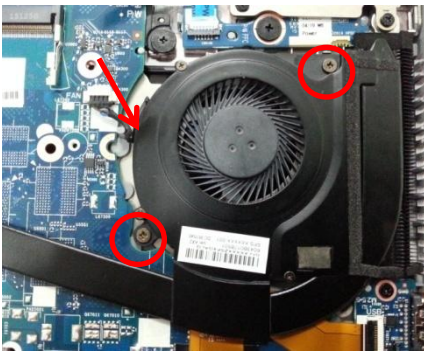


Fig.1

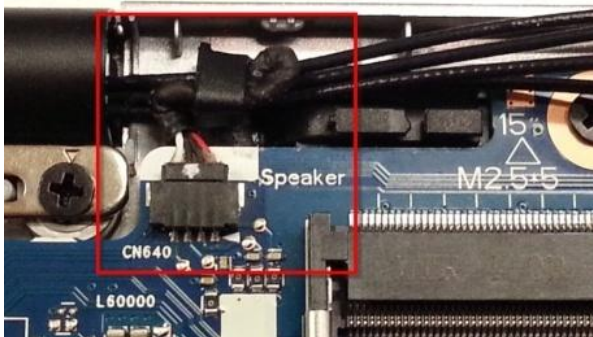


Fig.2

Notes : If finding anything uncommon, notice foreman or assistant at once.

Holding fixture list (holding fixture standard)	Qty	Holding fixture list (holding fixture standard)	Qty
Electric cross screwdriver (#1)	1		

Tabulator : Vick Weng

Auditor : C.S. Lee

Issue department : NPSU-PPE



Standard Operation Procedure

Document No. Connery Travolta 14" & 15" FA DIS ASS'Y SOP Station : 25(1/2)
Name : Loosen USB/B Screws Ver. : 0.1 Date : 2016/10/26



Fig.1

- Step :
1. Loosen USB/B screw * 2. (Fig.1 / Fig.2)

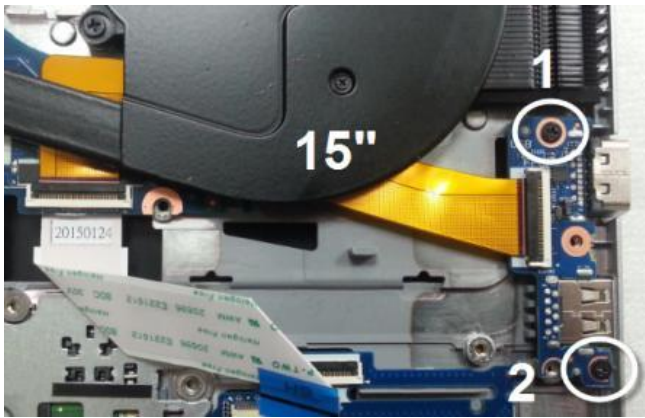


Fig.2

Notes : If finding anything uncommon, notice foreman or assistant at once.

Holding fixture list (holding fixture standard)	Qty	Holding fixture list (holding fixture standard)	Qty
Electric cross screwdriver (#1)	1		



Standard Operation Procedure

Document No. Connery Travolta 14" & 15" FA DIS ASS'Y SOP

Station : 25(2/2)

Name : Loosen M/B Screws

Ver. : 0.1

Date : 2016/10/26

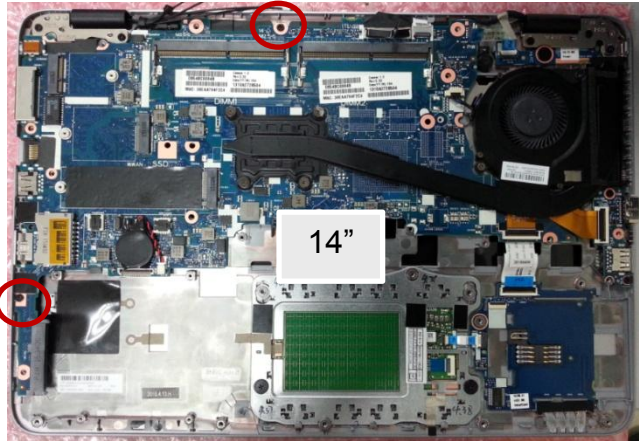


Fig.1

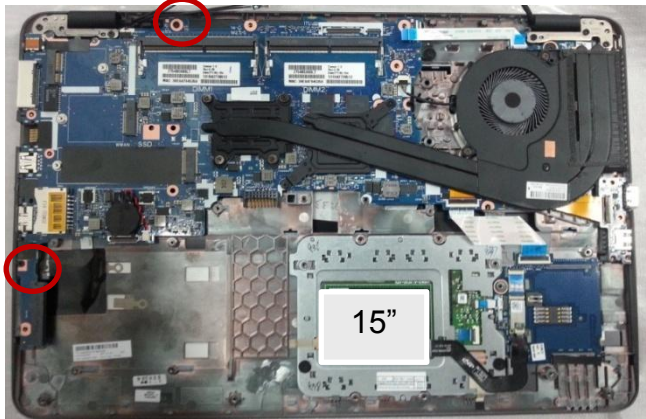


Fig.2

- Step :
1. Loosen M/B screw *2. (Fig.1 / Fig.2)

Notes : If finding anything uncommon, notice foreman or assistant at once.

Holding fixture list (holding fixture standard)	Qty	Holding fixture list (holding fixture standard)	Qty
Electric cross screwdriver (#1)	1		



Standard Operation Procedure

Document No. Connery Travolta 14" & 15" FA DIS ASS'Y SOP

Station : 27(1/1)

Name : Disassemble USB/B

Ver. : 0.1

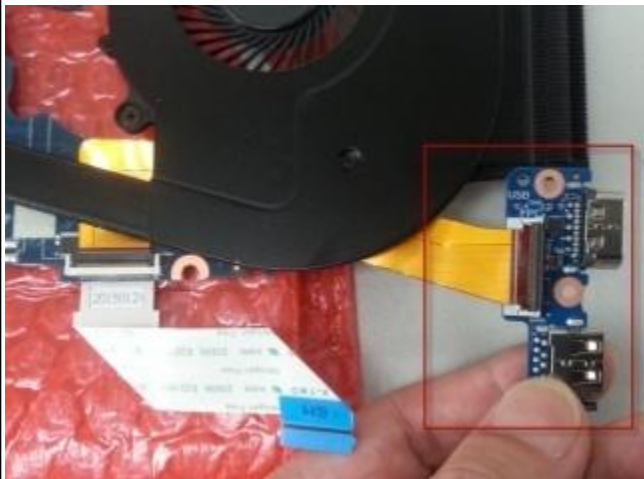
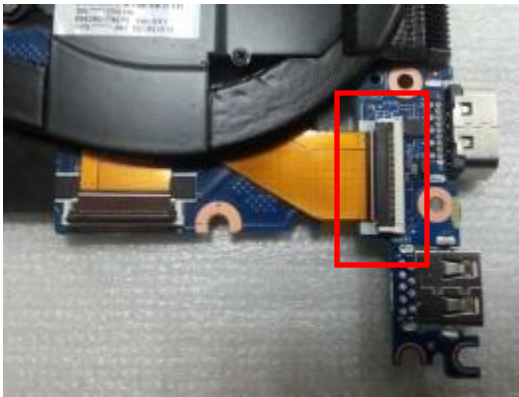
Date : 2016/10/26

- Step :
1. Disassemble USB/B. (Fig.1/ Fig.2)



14"

Fig.1



15"

Fig.2



Notes : If finding anything uncommon, notice foreman or assistant at once.

Holding fixture list (holding fixture standard)	Qty	Holding fixture list (holding fixture standard)	Qty



Standard Operation Procedure

Document No. Connery Travolta 14" & 15" FA DIS ASS'Y SOP Station : 28(2/2)
Name : Disassemble Thermal Module & Fan Ver. : 0.1 Date : 2016/10/26



- Step :
1. Put the M/B on support fixture. (Fig.1)
 2. Loosen thermal module set screw.
 - ❖ UMA : screw * 4. (Fig.2)
 - ❖ DIS : screw * 6. (Fig.3)

Fig.1

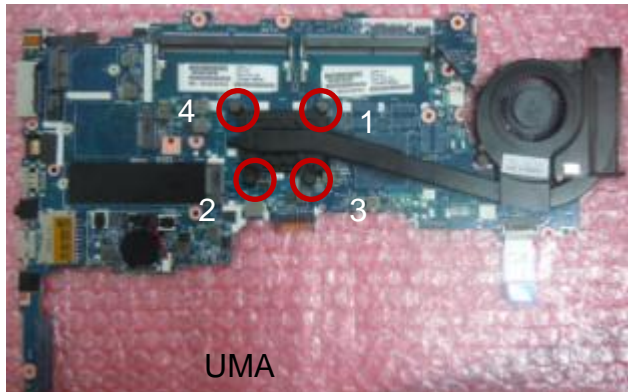


Fig.2

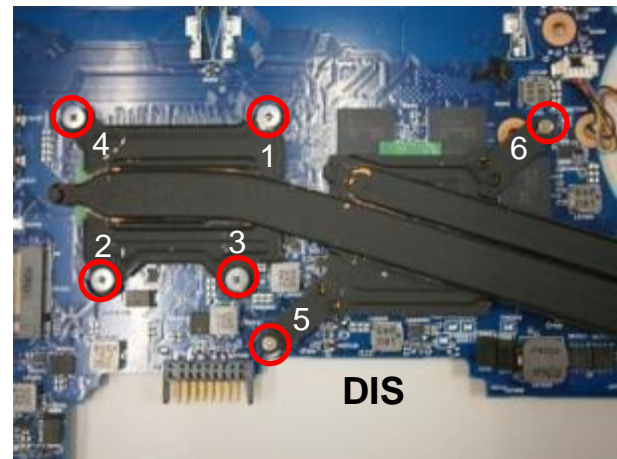


Fig.3

Notes : If finding anything uncommon, notice foreman or assistant at once.

Holding fixture list (holding fixture standard)	Qty	Holding fixture list (holding fixture standard)	Qty
Electric cross screwdriver (#1)	1		
M/B Support Fixture (B-Side)	1		



Standard Operation Procedure

Document No. Connery Travolta 14" & 15" FA DIS ASS'Y SOP

Station : 29(1/1)

Name : Disassemble FFC & FPC

Ver. : 0.1

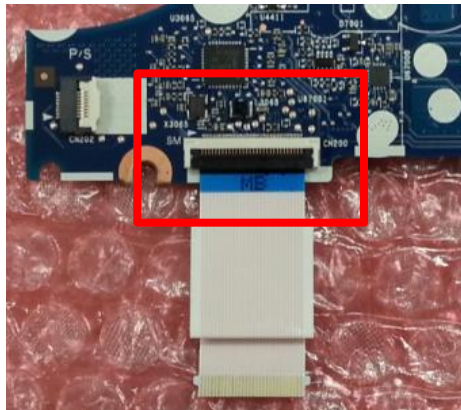
Date : 2016/10/26

For 14"

1. Disassemble Smartcard/B FFC. (Fig.1)
2. Disassemble USB/B FPC.(Fig.2)

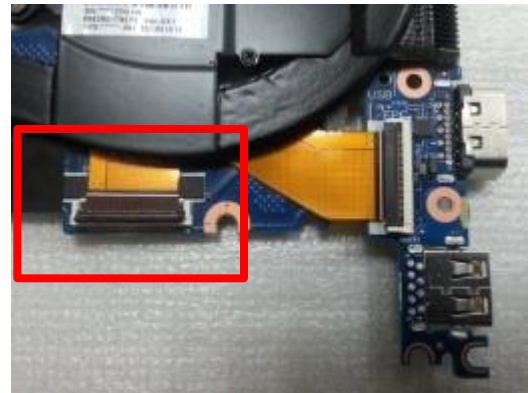
For 15"

1. Disassemble Smartcard/B FFC . (Fig.3)
2. Disassemble USB/B FPC. (Fig.4)



For 14"

Fig.1



For 14"

Fig.2



For 15"

Fig.3



For 15"

Fig.4

Notes : If finding anything uncommon, notice foreman or assistant at once.

Holding fixture list (holding fixture standard)	Qty	Holding fixture list (holding fixture standard)	Qty

Tabulator : Vick Weng

Auditor : C.S. Lee

Issue department : NPSU-PPE



Standard Operation Procedure

Document No. Connery Travolta 14" & 15" FA DIS ASS'Y SOP Station : 30(1/1)
Name : Package Ver. : 0.1 Date : 2016/10/26

- Step :
1. Put the M/B in box.



Notes : If finding anything uncommon, notice foreman or assistant at once.

Holding fixture list (holding fixture standard)	Qty	Holding fixture list (holding fixture standard)	Qty



Standard Operation Procedure

Document No. Connery Travolta 14" & 15" FA DIS ASS'Y SOP Station : 31(1/1)
Name : Loosen Screws Ver. : 0.1 Date : 2016/10/26

- Step :
- 1. Loosen screw * 5.
 (Fig.1/Fig.2)
 - 2. Separate top case and LCM module. (Fig.3)

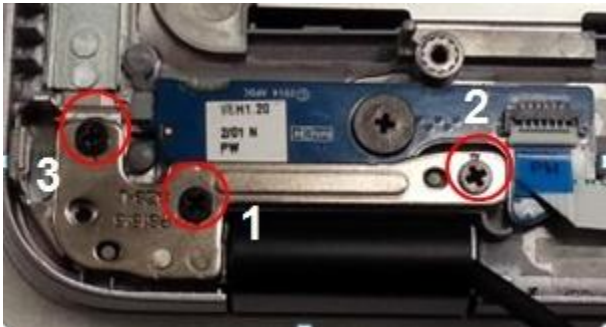


Fig.1

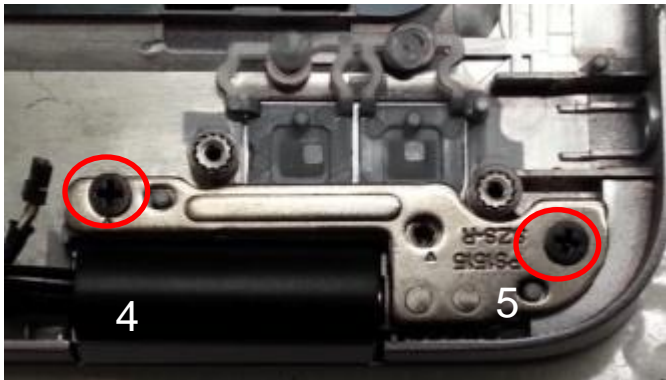


Fig.2



Fig.3

Notes : If finding anything uncommon, notice foreman or assistant at once.

Holding fixture list (holding fixture standard)	Qty	Holding fixture list (holding fixture standard)	Qty
Electric cross screwdriver (#1)	1		



Standard Operation Procedure

Document No. Connery Travolta 14" & 15" FA DIS ASS'Y SOP Station : 32(1/1)
Name : Package Ver. : 0.1 Date : 2016/10/26

- Step :
1. Put the top case in box.



Fig.1

Notes : If finding anything uncommon, notice foreman or assistant at once.

Holding fixture list (holding fixture standard)	Qty	Holding fixture list (holding fixture standard)	Qty

MANUFACTURING PROCESS INSTRUCTIONS

MECHANICAL ASSEMBLY

MODEL : Connery/Travolta

Sub-assembly name:	LCM DIS ASS'Y		
Document No.:	Connery/Travolta 14" & 15" LCM DIS ASS'Y SOP		
Written by:	Vick Weng	Revision:	0.1
Date:	2016/10/26	Page:	1

A. Current station version list

Station	Ver.	Station	Ver.	Station	Ver.	Station	Ver.
1	0.1	10	0.1				
2	0.1	11	0.1				
3	0.1	12	0.1				
4	0.1	13	0.1				
5	0.1						
6	0.1						
7	0.1						
8	0.1						
9	0.1						

B. Version Modify list

Revision	Date	Station	Content	Ver.	Design
0.1	2016/10/26	ALL	FIRST VERSION	0.1	Vick Weng

Auditor : C.S. Lee Tabulator : Vick Weng



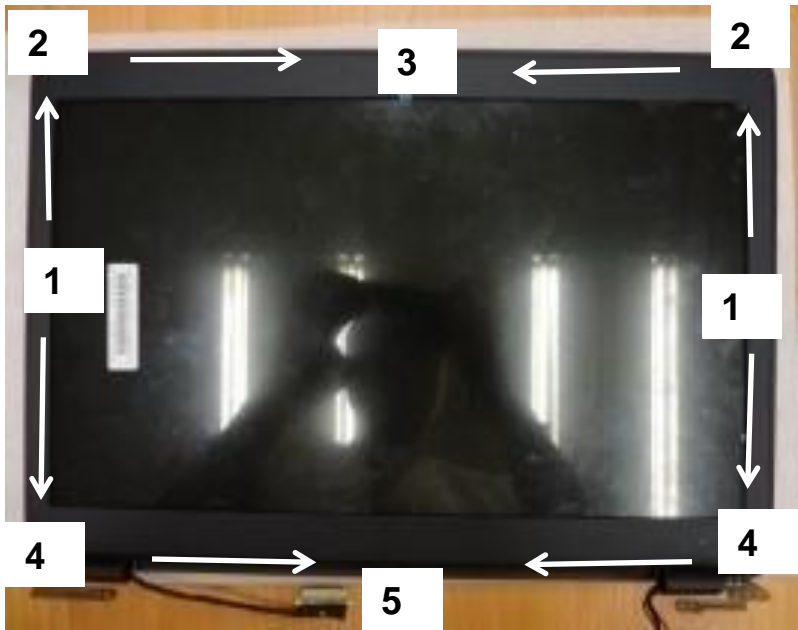
Standard Operation Procedure

Document No. Connery/Travolta 14" & 15" LCM DIS ASS'Y SOP Station : 1(1/1)
Name : Disassemble Bezel & Rear Cover Ver. : 0.1 Date : 2016/10/26

Step :

Non-Touch SKU

- 1. Disassemble bezel in order.(Fig.1)



Touch SKU

- 1. Disassemble bezel in order.(Fig.2)
- 2. Disassemble cable from touch control board.(Fig.3)



Fig.2

Fig.3

Notes : If finding anything uncommon, notice foreman or assistant at once.

Holding fixture list (holding fixture standard)	Qty	Holding fixture list (holding fixture standard)	Qty



Standard Operation Procedure

Document No. Connery/Travolta 14" & 15" LCM DIS ASS'Y SOP Station : 2(1/1)
Name : Disassemble Hinge Cap - L Ver. : 0.1 Date : 2016/10/26



Fig.1

- Step :
- 1. Loosen hinge cap screw*1.(Fig.1)
 - 2. Disassemble the left hinge cap from rear cover.

Notes : If finding anything uncommon, notice foreman or assistant at once.

Holding fixture list (holding fixture standard)	Qty	Holding fixture list (holding fixture standard)	Qty
Electric cross screwdriver (#1)	1		



Standard Operation Procedure

Document No. Connery/Travolta 14" & 15" LCM DIS ASS'Y SOP Station : 3(1/1)
Name : Disassemble Hinge BRKT - L Ver. : 0.1 Date : 2016/10/26



Fig.1

Step :

1. Rip the gasket. (Fig.1)
2. Loosen screw * 3. (Fig.2)
3. Disassemble the left hinge bracket from rear cover.



Fig.2

Notes : If finding anything uncommon, notice foreman or assistant at once.

Holding fixture list (holding fixture standard)	Qty	Holding fixture list (holding fixture standard)	Qty
Electric cross screwdriver (#1)	1		



Standard Operation Procedure

Document No. Connery/Travolta 14" & 15" LCM DIS ASS'Y SOP Station : 4(1/1)
Name : Disassemble Camera or MIC/B Ver. : 0.1 Date : 2016/10/26

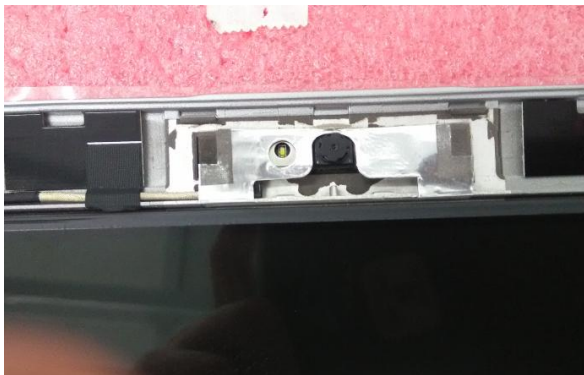


Fig.1

Step :

1. Rip the AL foil that is on camera or MIC/B. (Fig.1)
2. Rip the acid tape that is on LVDS cable. (Fig.2)
3. Disassemble camera or MIC/B from rear cover, and disconnect LVDS cable. (Fig.3 / Fig.4)
4. Disassemble LVDS cable from rear cover. (Fig.5)

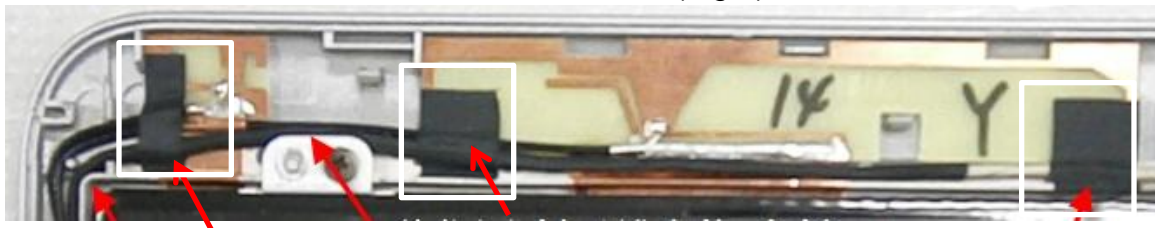


Fig.2



Fig.3



Fig.4



Fig.5

Notes : If finding anything uncommon, notice foreman or assistant at once.

Holding fixture list (holding fixture standard)	Qty	Holding fixture list (holding fixture standard)	Qty



Standard Operation Procedure

Document No. Connery/Travolta 14" & 15" LCM DIS ASS'Y SOP Station : 5(1/1)
Name : Loosen Panel Screws Ver. : 0.1 Date : 2016/10/26

- Step :
1. Loosen panel screw * 4. (Fig.1)



Fig.1

Notes : If finding anything uncommon, notice foreman or assistant at once.

Holding fixture list (holding fixture standard)	Qty	Holding fixture list (holding fixture standard)	Qty
Electric cross screwdriver (#1)	1		



Standard Operation Procedure

Document No. Connery/Travolta 14" & 15" LCM DIS ASS'Y SOP Station : 6(1/1)
Name : Disassemble Panel Ver. : 0.1 Date : 2016/10/26

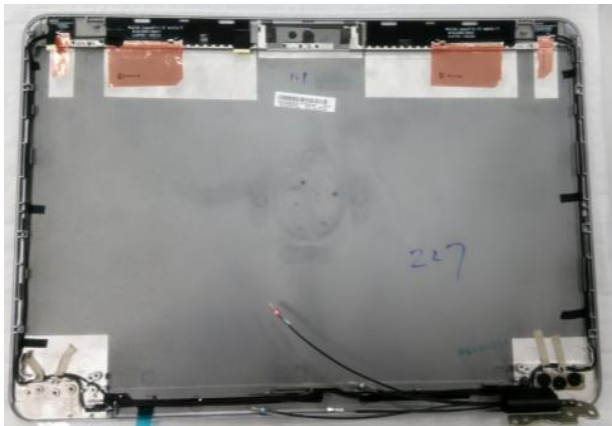


Fig.1

- Step :
- 1. Disassemble panel from rear cover.
 - 2. Disconnect LVDS cable. (Fig.1 / Fig.2)



Fig.2



Notes : If finding anything uncommon, notice foreman or assistant at once.

Holding fixture list (holding fixture standard)	Qty	Holding fixture list (holding fixture standard)	Qty



Standard Operation Procedure

Document No. Connery/Travolta 14" & 15" LCM DIS ASS'Y SOP Station : 7(1/1)
Name : Disassemble Hinge Cap - R Ver. : 0.1 Date : 2016/10/26

- Step :
- 1. Loosen screw* 1. (Fig.1)
 - 2. Disassemble the right hinge cap from rear cover. (Fig.2)



Fig.1



Fig.2

Notes : If finding anything uncommon, notice foreman or assistant at once.

Holding fixture list (holding fixture standard)	Qty	Holding fixture list (holding fixture standard)	Qty
Electric cross screwdriver (#1)	1		



Standard Operation Procedure

Document No. Connery/Travolta 14" & 15" LCM DIS ASS'Y SOP Station : 8(1/1)
Name : Disassemble Hinge BRKT - R Ver. : 0.1 Date : 2016/10/26

Step :

1. Loosen hinge screw (6052B0096201)
M2.5*2.5 * 3. (Fig.1)
2. Disassemble the right hinge bracket from rear cover.

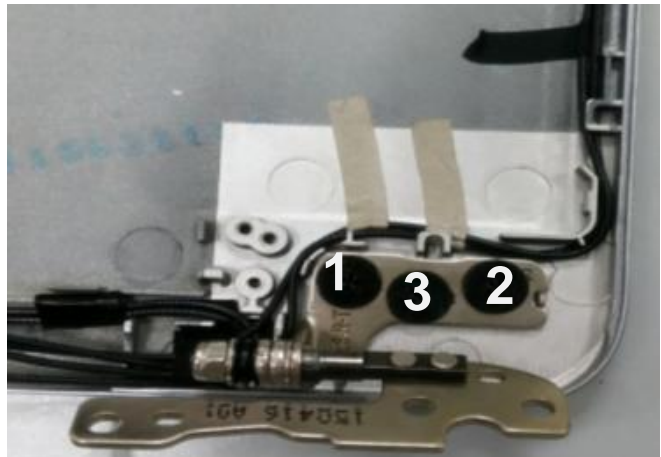


Fig.1

Notes : If finding anything uncommon, notice foreman or assistant at once.

Holding fixture list (holding fixture standard)	Qty	Holding fixture list (holding fixture standard)	Qty
Electric cross screwdriver (#1)	1		

Tabulator : Vick Weng

Auditor : C.S. Lee

Issue department : NPSU-PPE



Standard Operation Procedure

Document No. Connery/Travolta 14" & 15" LCM DIS ASS'Y SOP Station : 9(1/1)
Name : Disassemble Antenna - R Ver. : 0.1 Date : 2016/10/26

Step :

1. Rip the acid tape & gasket. (Fig.1/ Fig.2/ Fig.3)
2. Disassemble antenna. (Fig.1/ Fig.2/ Fig.3)

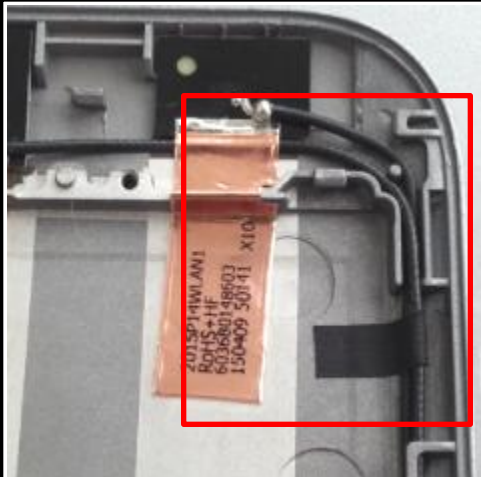
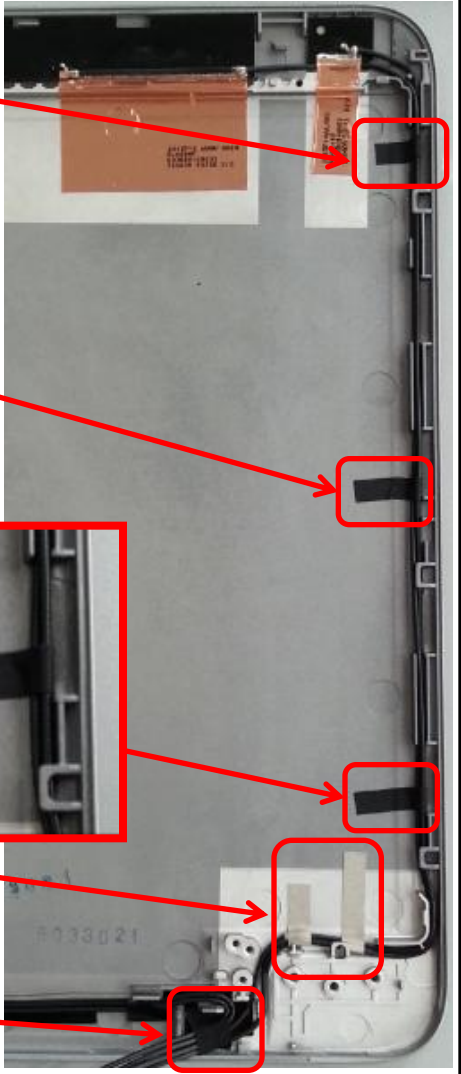
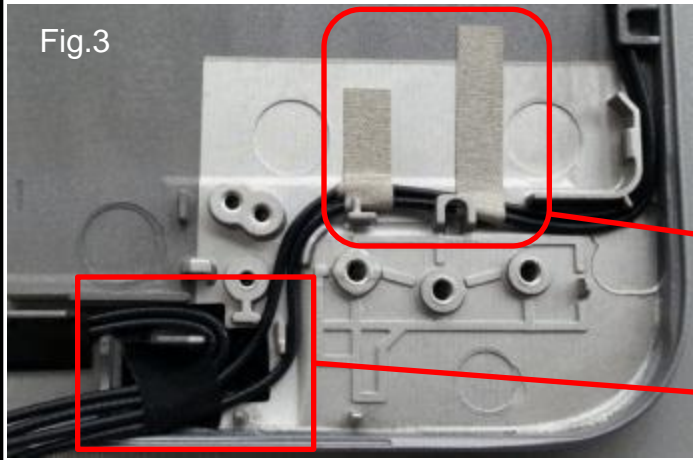



Fig.1



Notes : If finding anything uncommon, notice foreman or assistant at once.

Holding fixture list (holding fixture standard)	Qty	Holding fixture list (holding fixture standard)	Qty



Standard Operation Procedure

Document No. Connery/Travolta 14" & 15" LCM DIS ASS'Y SOP Station : 10(1/1)
Name :Disassemble Antenna - Underside Ver. : 0.1 Date : 2016/10/26

- Step :
1. Disassemble antenna from hooks.
(Fig.1 / Fig.2 / Fig.3)



Notes : If finding anything uncommon, notice foreman or assistant at once.

Holding fixture list (holding fixture standard)	Qty	Holding fixture list (holding fixture standard)	Qty



Standard Operation Procedure

Document No. Connery/Travolta 14" & 15" LCM DIS ASS'Y SOP Station : 11(1/1)
Name :Disassemble Antenna - L Ver. : 0.1 Date : 2016/10/26

- Step :
1. Rip acid tape, and disassemble antenna from hooks. (Fig.1)

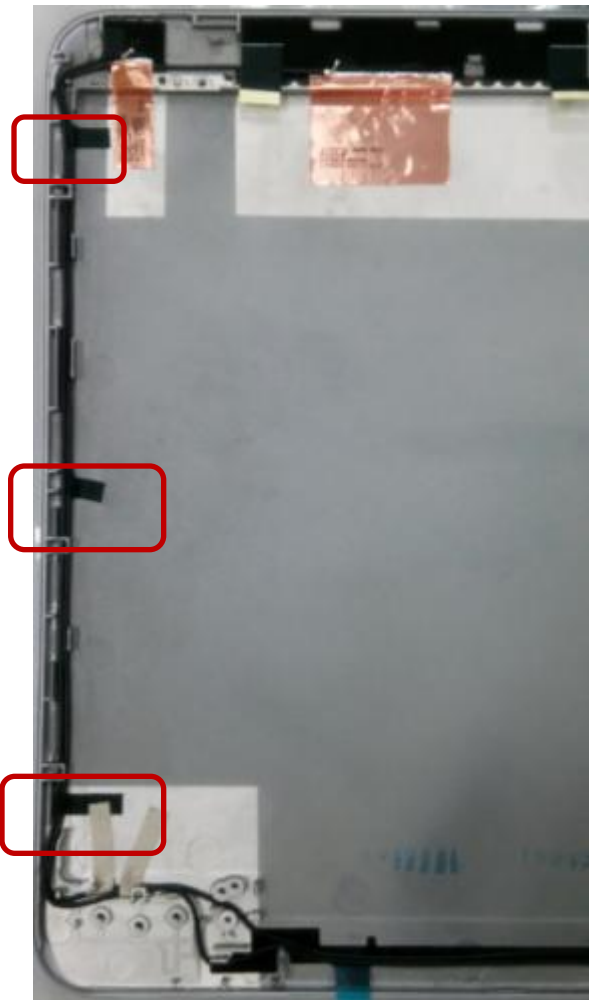


Fig.1

Notes : If finding anything uncommon, notice foreman or assistant at once.

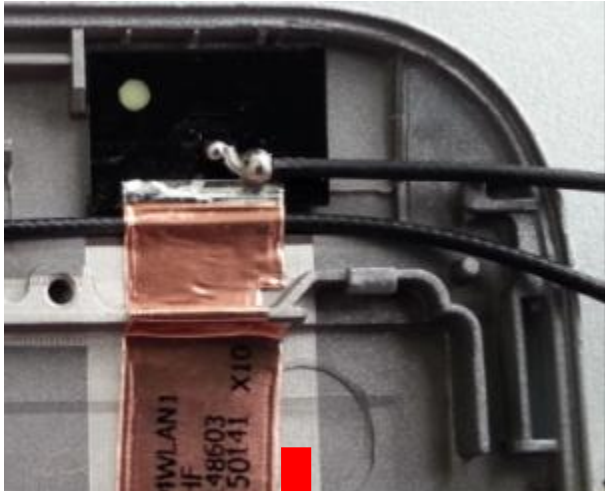
Holding fixture list (holding fixture standard)	Qty	Holding fixture list (holding fixture standard)	Qty



Standard Operation Procedure

Document No. Connery/Travolta 14" & 15" LCM DIS ASS'Y SOP Station : 12(1/1)
Name : Disassemble WLAN – R & L Ver. : 0.1 Date : 2016/10/26

- Step :
- 1. Rip AL foil.
 - 2. Disassemble WLAN antenna from rear cover.



Notes : If finding anything uncommon, notice foreman or assistant at once.

Holding fixture list (holding fixture standard)	Qty	Holding fixture list (holding fixture standard)	Qty



Standard Operation Procedure

Document No. Connery/Travolta 14" & 15" LCM DIS ASS'Y SOP Station : 13(1/1)
Name : Disassemble WWAN – R & L Ver. : 0.1 Date : 2016/10/26

Step :

1. Rip AL foil.
2. Disassemble WWAN antenna from rear cover.



Notes : If finding anything uncommon, notice foreman or assistant at once.

Holding fixture list (holding fixture standard)	Qty	Holding fixture list (holding fixture standard)	Qty

Tabulator : Vick Weng

Auditor : C.S. Lee

Issue department : NPSU-PPE