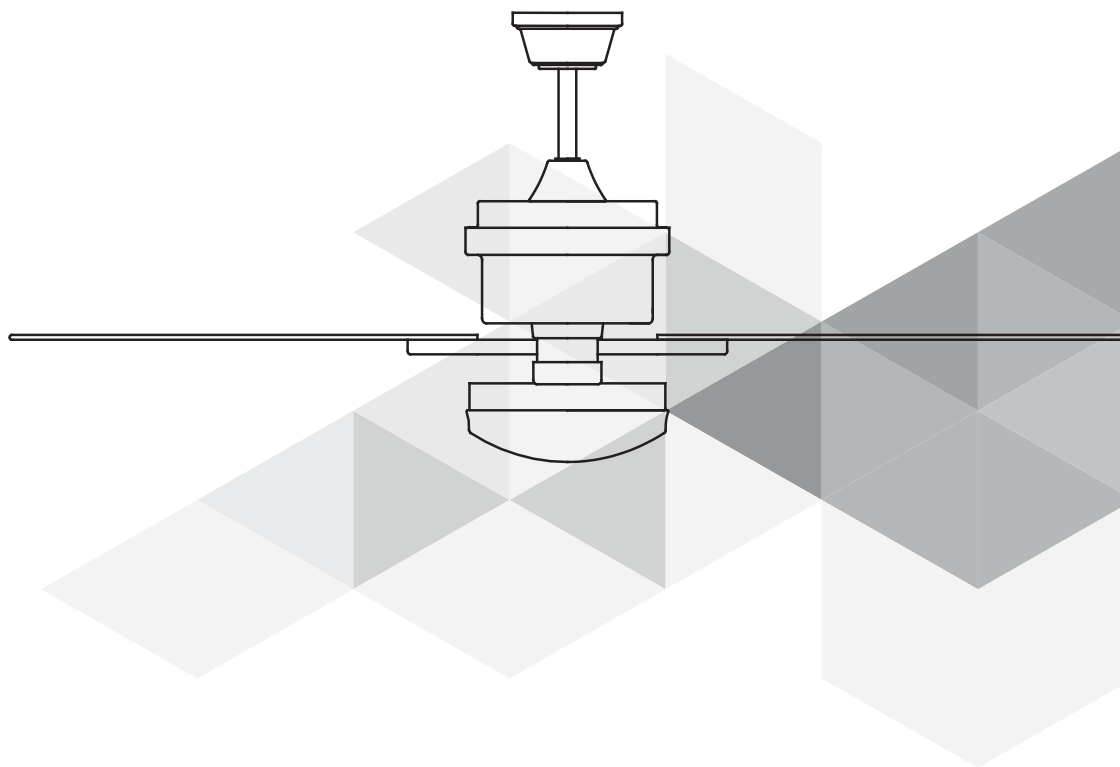


NOMA[®] MD

Hanson LED Ceiling Fan

model no. 052-8398-2



Toll-free 1-866-827-4985

IMPORTANT: For your safety please read and understand this manual before installing or operating this product.

OWNER'S MANUAL

V1.2016

Safety Rules – Read and Save These Instructions

1. To reduce the risk of electric shock, ensure electricity has been turned off at the circuit breaker or fuse box before beginning.
2. All wiring must be in accordance with the national and local electrical codes. Electrical installation should be performed by a qualified licensed electrician.
3. **WARNING:** To reduce the risk of electric shock or fire, do not use this fan with any solid-state fan-speed control device. It will permanently damage the electronic circuitry.
4. **CAUTION:** To reduce the risk of personal injury, use only the screws provided with the outlet box.
5. The outlet box and support structure must be securely mounted and capable of reliably supporting a minimum of 35 lb (15.9 kg). Use only UL listed outlet boxes marked "FOR FAN SUPPORT."
6. The fan must be mounted with a minimum of 7' (2.13 m) from the trailing edge of the blades to the floor.
7. Avoid placing objects in the path of the blades.
8. To avoid personal injury or damage to the fan and other items be cautious when working around or cleaning the fan.
9. Do not use water or detergents when cleaning the fan or fan blades. A dry dust cloth will be suitable for most cleaning.
10. After making electrical connections, spliced conductors should be turned upward and pushed carefully up into the outlet box. The wires should be spread apart with the grounded conductor and the equipment-grounding conductor on one side of the outlet box and the ungrounded conductor on the other side of the outlet box.
11. All set screws must be checked and retightened where necessary before installation.



Warning: To reduce the risk of fire, electric shock, and personal injury, mount fan to outlet box marked "acceptable for fan support" with the screws provided with the outlet box.



Warning: To risk of personal injury, do not bend the blade arms (also referred to as flanges) or the brackets while balancing the blades or cleaning the fan. Do not insert foreign objects between rotating fan blades.



Warning: To reduce the risk of fire, electric shock, or personal injury, mount to outlet box marked "acceptable for fan support of 35 lb (15.9 kg) or less" and use mounting screws provided with the outlet box. Most outlet boxes commonly used for the support of light fixtures are not acceptable for fan support and may need to be replaced. Due to the complexity of this fan, a qualified licensed electrician is strongly recommended.



Attention: This product is equipped with a 190 W limiting device. If lamping exceeds 190 W the light kit will shut off automatically until the proper wattage of bulbs is installed. Reset the light kit by turning it off, replacing the bulbs with the correct wattage, and then turning the light kit back on.

Tools Needed (not supplied)

Required



Flathead
screwdriver



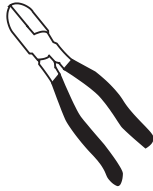
Crosshead
screwdriver



Safety glasses



Pliers



Wire cutters



Electrical tape

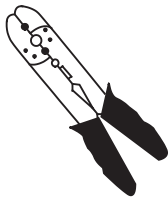


Step ladder

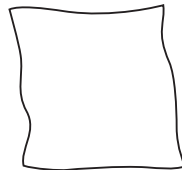


Adjustable wrench

Helpful



Wire strippers

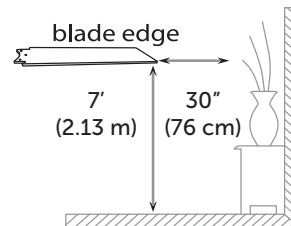


Soft cloth

Installation Preparation

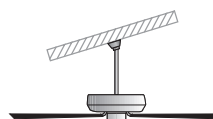
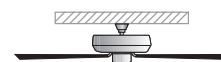
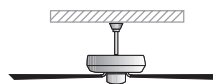
To prevent personal injury and damage, ensure that the hanging location allows the blades a clearance of 7" (2.13 m) from the floor and 30" (76 cm) from any wall or obstruction.

This fan can be mounted with a downrod on a regular (no-slope) or vaulted ceiling. Other installation, such as flush mount, are not available for this fan.



downrod
installation

flush mount
installation

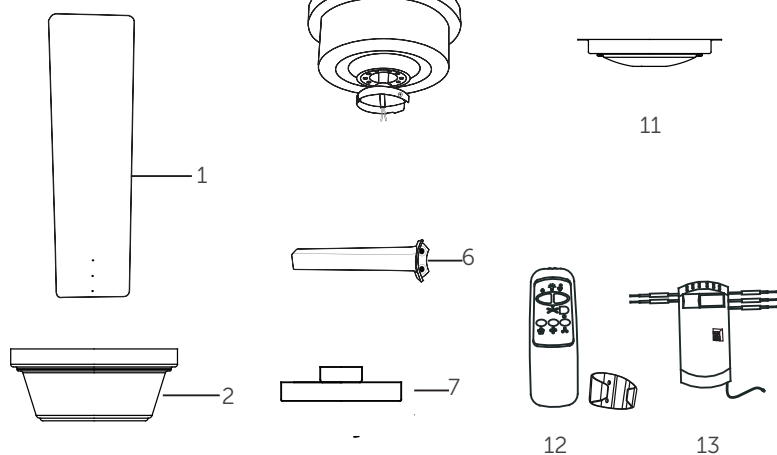


vaulted ceiling
angle is not to
exceed 15°.

Unpacking Your Fan

Unpack and inspect fan carefully to be certain all contents are included.

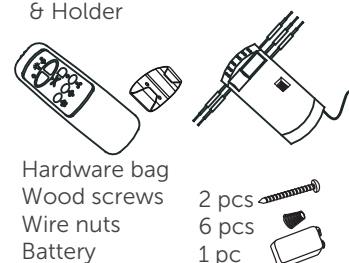
1. Set of blades (5)
2. Canopy assembly
3. Ball/downrod assembly
4. Downrod stand cover
5. Fan motor assembly
6. Blade arms (5)
7. Light kit fitter
8. Glass shade
9. Mounting bracket
10. Canopy cover
11. LED Lamp (preassembled)
12. Transmitter & Holder
13. Receiver
14. Hardware bag



11-12.Remote Control

Transmitter
& Holder

Receiver



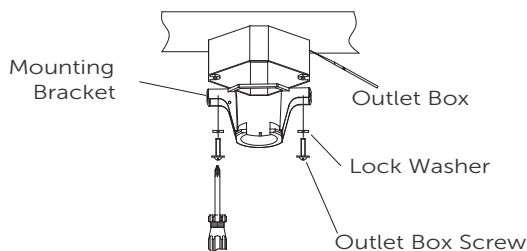
14.Hardware bag

Wood screws	2 pcs	
Spring washers	2 pcs	
Flat washers	2 pcs	
Mounting screws	2 pcs	
Blade screws	16 pcs	
Fibre washers	16 pcs	
"J" hook	1 pc	
Zip tie	1 pc	
Blade arm screw	1 pc	

Installing Mounting Bracket

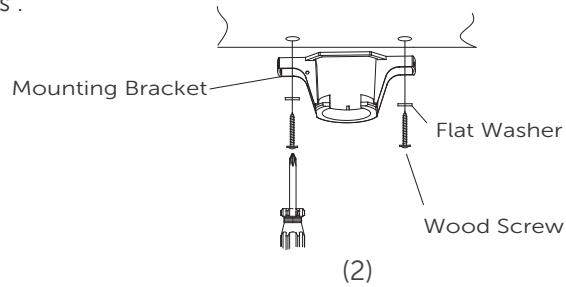
! Note: Do not Mount directly to sheet.

1. (1) Securely attach the mounting bracket to an outlet box marked "Acceptable for Fan Support", using the supplied outlet box screws with lock washers.



(1)

(2) Drill two mounting holes in the ceiling joist. Securely attach the mounting bracket to the ceiling, using the two sets of long wood screws with flat washers.



2. Drop-mount

! Note: Canopy picture may vary from product for some styles of ceiling fans.

(1) Downrod assembly

Loosen the two downrod set screws and remove the chip and connection pin from downrod coupling. Insert the downrod through canopy and downrod stand cover and pull lead wires through downrod (Fig. 2a).

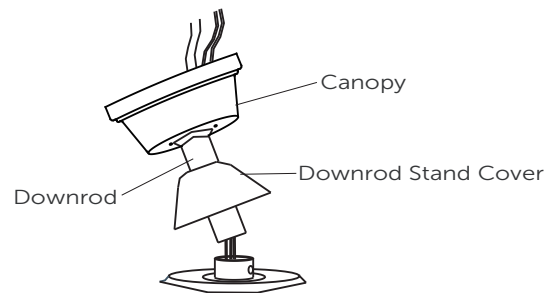


Fig. 2a

(2) Securing assembly

Insert downrod into downrod coupling. Make sure to align holes in downrod with the hole in the coupling. Insert the clip into the connection pin until it snaps into place. Tighten the screws in the downrod coupling (Fig. 2b).

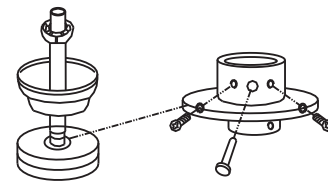


Fig. 2b

3. Hands-free wiring

- Carefully lift the fan assembly onto the mounting bracket.
- Rotate the fan until the notch (b) on the hanger ball fits against the ridge (a) on the mounting bracket (Fig. 3).
- With the mounting bracket holding the fan assembly follow wiring instructions (step 1).

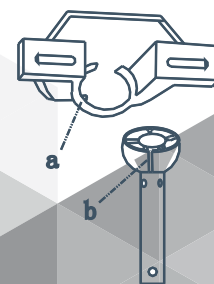


Fig. 3

8. Lift fan onto the mounting bracket. Turn housing until hanging ball seats itself into ball socket (listen for click). For added security, attach safety cable from fan unit to "J" hook in outlet box. Secure by looping zip tie through safety cable and "J" hook. Tighten zip tie securely (Fig. 4).

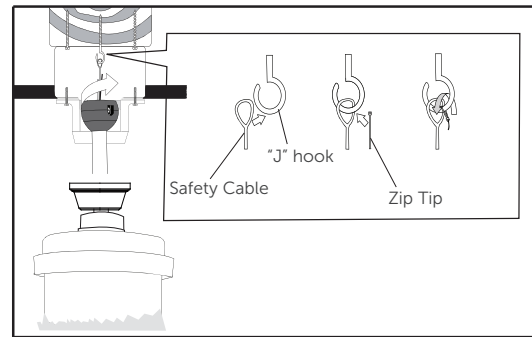


Fig. 4

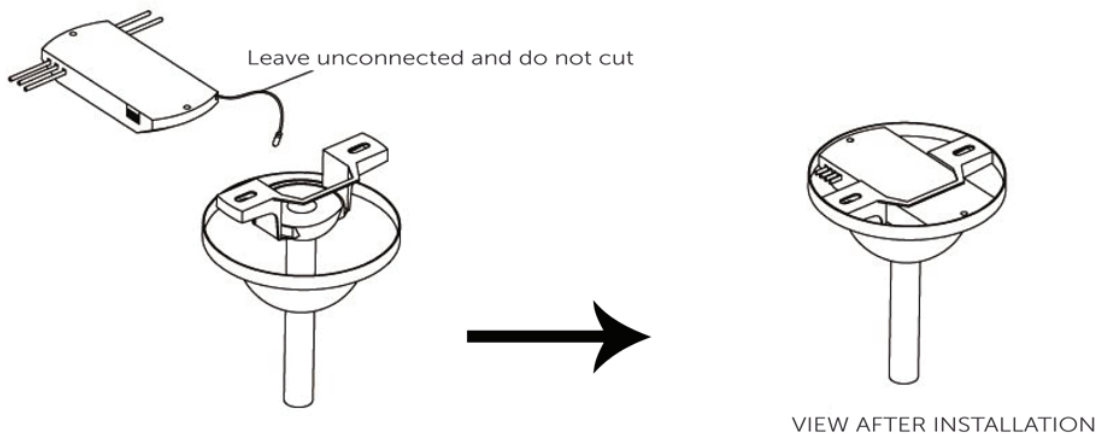
- ▲ **WARNING:** To reduce the risk of fire, electric shock or personal injury, mount to outlet box marked "acceptable for fan support" and use mounting screws provided with the outlet box. Most outlet boxes commonly used for the support of lighting fixtures are not acceptable for fan support and may need to be replaced. Consult a qualified electrician if in doubt .

5. Wiring instructions

- ⚠ **IMPORTANT:** If you are not sure if the electrical outlet box and fan are grounded, contact a licensed electrician for advice. They must be grounded for safe operation.
- ⚠ **WARNING:** To avoid possible electric shock, be sure electricity is turned off at the main fuse box before wiring.

Installing Receiver Assembly

- Once the connection has been made, the receiver inserts into the drop rod hanging bracket. The canopy comes up to cover the receiver and bracket (Fig. 10).

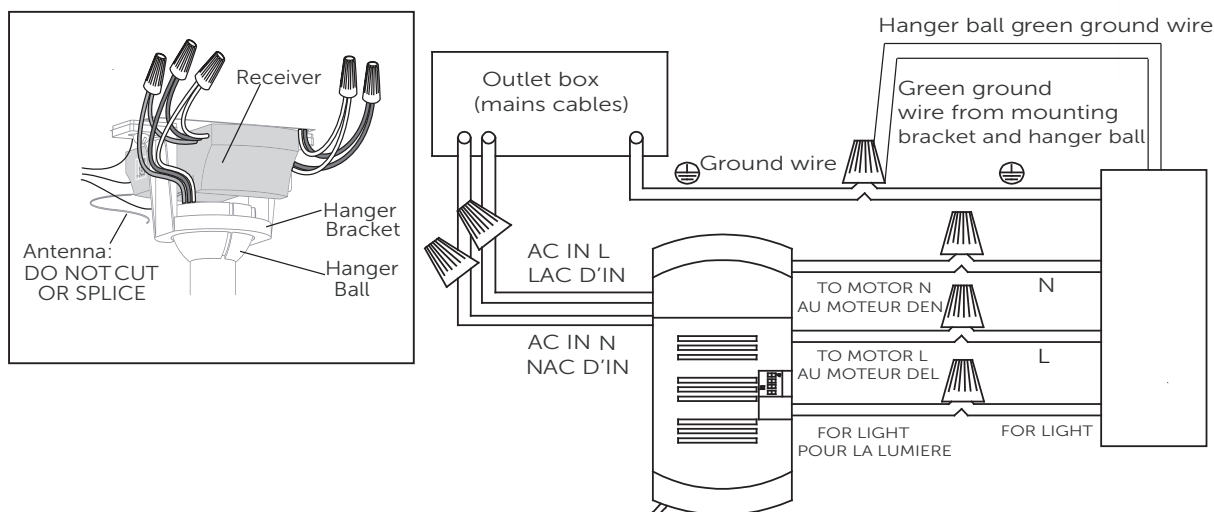


Between fan and receiver:

- . Connect the black wire marked "L" from the fan to the black wire marked "TO MOTOR L" from the receiver.
- . Connect the blue wire marked "FOR LIGHT" from the fan to the blue wire marked "FOR LIGHT" from the receiver.
- . Connect the wire marked "N" from the fan to the wire marked "TO MOTOR N" from the receiver.

Between receiver and mains:

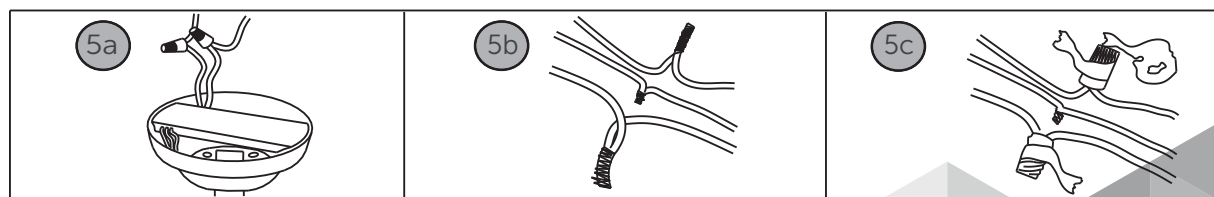
- . Connect the black live wire marked "AC IN L" from the receiver to the live wire (typically black) from the outlet box.
- . Connect the white neutral wire marked "AC IN N" from the receiver to the neutral wire (typically white) from the outlet box.
- . Connect the green ground wire from the mounting bracket and hanger ball to the ground wire (bare or green) from the outlet box.



When wires are matched up connect them by twisting frayed ends together (Fig. 5a).

Screw wire connectors (3 are provided) onto the tops of the twisted wires (Fig. 5b).

Fasten them with electrical tape (Fig. 5c).



WARNING: Be sure no bare wire or wire strands are visible after making connections. Place green and white connections on opposite side of box from the black and blue (if applicable) connections.

6. Loosen two canopy screws part way, and then push the canopy upwards by inserting canopy screw heads into key hole slots, rotate the canopy till it is locked in place, and finally tighten canopy screws (Fig. 6).
Attach the canopy cover to canopy and rotate it clockwise until tight.

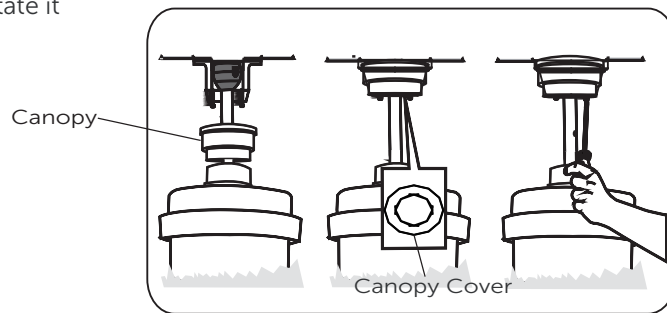


Fig. 6

7. Assemble blade arm to blade with blade screws (Fig. 7).

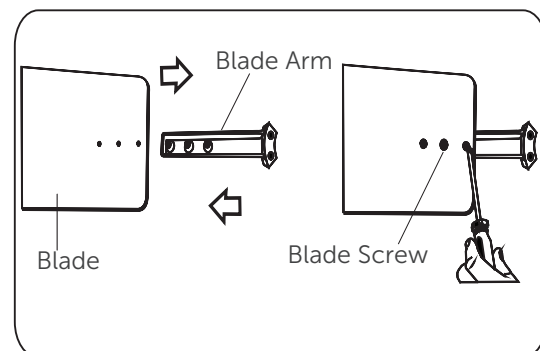


Fig. 7

8. If there are plastic tabs shaped like bottle caps, remove and discard them. These are stabilizers that protect the motor during shipping.
A slot in the switch housing mounting plate allows you to tighten the blade assembly to the motor (Fig. 8).
Using motor screws provided, line up the blade arm with the holes in the motor housing and tighten the screws securely.

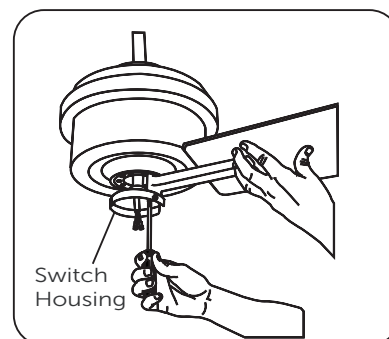


Fig. 8

9. Connect the wire inside the switch housing cap by snapping the male and female connectors together; match white wires together and blue wire to black wire together. Screw on light kit assembly and switch housing with 3 screws previously removed (Fig. 9).

Installing Glass shade

- Attach the glass shade to the light kit and turn clockwise until tight (Fig. 9).
- Now your ceiling fan is assembled and ready for use.

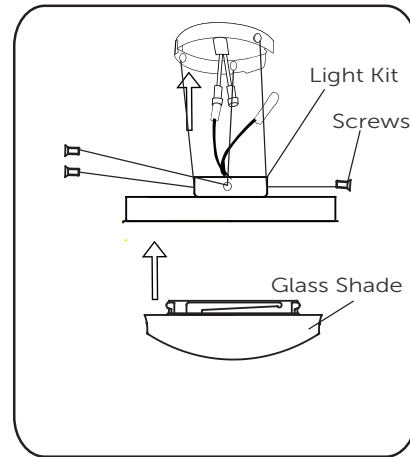


Fig.9

Operating Your Transmitter

Restore power to the ceiling fan and test for proper operation.

10. Install the 9V battery (included). To prevent damage to transmitter, remove the battery if not used for long periods (Fig. 10).

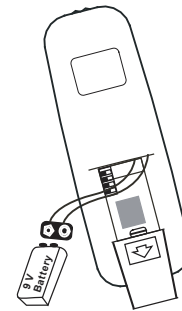
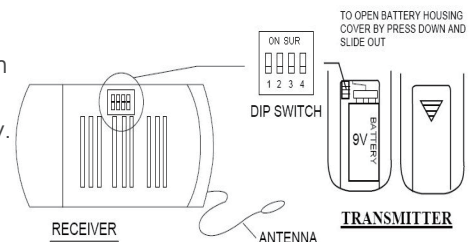


Fig. 10

CODE SWITCH

- **CODE SWITCH:** Codes are set by pushing dip switches up or down. It is imperative that the code used for both transmitter and receiver is exactly the same; otherwise remote controller will not work. Please note the code switch will enable you to operate a second remote controller independently. For example, if you have two ceiling fans with 2 remote control units, set 2 different codes for each set of transmitter/receiver. This will enable you to operate each ceiling fan independently.
- Your remote control is ready for use after battery installation.



11. Turn fan on/off and select fan speed (Fig. 11).
- Restore power to ceiling fan and test for proper operation.
- The fan remote control controls the fan setting:

OFF: Turn off the ceiling fan.

HI: Turn on the fan at high speed.

MED: Turn on the fan at medium speed.

LOW: Turn on the fan at low speed.

LIGHT: ON/OFF: Press and release immediately to turn on or off the light.

DIMMER: Press and hold on to dim or brighten lights to the desired level and release (only for tungsten bulbs).

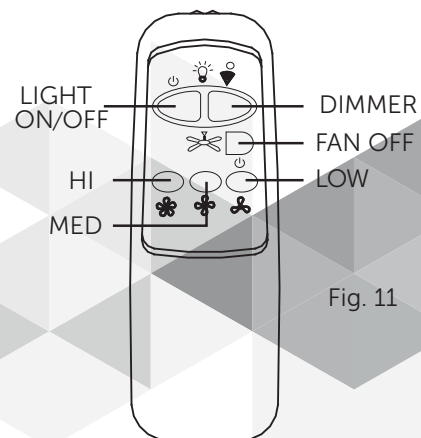


Fig. 11

Forward and reverse direction function

This ceiling fan is equipped with reverse switch for downward or upward air-flow.



NOTE: Do not change the direction of rotation the "High", "Medium" or "Low" buttons may be used to start the fan motor. The speed of the fan may be changed at anytime.

12. On this setting the fan will turn counter-clockwise. Use this function during cooler weather to re-circulate air (Fig. 12).

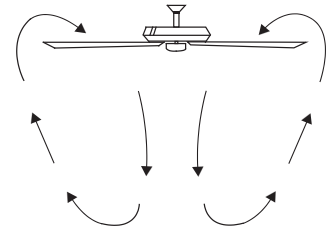


Fig. 12

13. On this setting the fan will turn clockwise. Use this function during cooler weather to re-circulate air (Fig. 13).

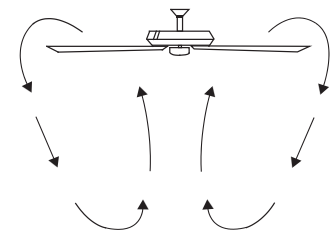


Fig. 13

Care of Your Fan

Here are some suggestions to help you maintain your fan.

1. Because of the fan's natural movement, some connections may become loose. Check the support connections, brackets, and blade attachments twice a year. Make sure they are secure. (It is not necessary to remove fan from ceiling.)
2. Clean your fan periodically to help maintain its new appearance over the years. Use only a soft brush or lint-free cloth to avoid scratching the finish. The plating is sealed with a lacquer to minimize discolouration or tarnishing. Do not use water when cleaning. This could damage the motor, the wood, or possibly cause an electric shock.
3. You can apply a light coat of furniture polish to the wood blades for additional protection and enhanced beauty. Cover small scratches with a light application of shoe polish.
4. There is no need to oil your fan. The motor has permanently lubricated sealed ball bearings.

Troubleshooting

PROBLEM	SOLUTION
Fan will not start	Check main and branch circuit fuses or breakers. Check line wire connections to the fan and switch wire connections in the switch housing.
Fan sounds noisy	Make sure all motor housing screws are snug. Make sure the screws that attach the fan blade bracket to the motor hub are tight. Make sure wire nut connections are not rattling against each other or the interior wall of the switch housing. Allow a 24-hour "breaking-in" period. Most noises associated with a new fan disappear during this time. If using ceiling fan light kit, make sure the screws securing the glassware are tight. Check that the light bulb is also secure. Make sure there is a short distance from the ceiling to the canopy. It should not touch the ceiling. Make sure your ceiling box is secure and rubber isolator pads are used between mounting bracket and outlet box.
Lights shut off and will not come back on.	This unit is equipped with a wattage limiting device. Lamping in excess of 190 W will disable your ceiling fan's light kit. To reset your light kit you must turn the power off and install bulbs of lower wattage, keeping the wattage under 190 W. Restore power to your ceiling fan and continue normal operation.

! Warning: Make sure the power is off at the electrical panel box before you attempt any repairs. Refer to the section "making electrical connections".

Warranty

This product carries a limited ten (10) year warranty against defects in the motor, and a one (1) year warranty against defects in workmanship and materials. Noma Canada agrees to replace the defective product free of charge within the stated warranty period, when returned by the original purchaser with proof of purchase. This product is not guaranteed against wear or breakage due to misuse and/or abuse.

Made in China

Imported by
Noma Canada, Toronto, Canada M4S 2B8

ENVIRONMENTAL PROTECTION



Discarded electrical appliances are recyclable and should not be discarded in your regular domestic waste! Please actively support us in conserving resources and protecting the environment by returning this appliance to a collection centre (if available).



Battery reclamation (please keep to comply with the local law).