



Supply the original instrument model code and serial number when ordering

Instructions

Select the desired key number. The arrow to the right marks the selection available.
Make the desired selections from Tables I through VI using the column below the proper arrow. A dot (•) denotes availability.

Table	I	II	III	IV	V
XM71	- 4	-----	-----	- V -	-----

KEY NUMBER

KEY NUMBER	Description
XM71	

Selection Availability

Selection	Availability
XM71	↓

TABLE I

Level Meter Code
4

4	•
---	---

TABLE II

Approvals	Without ATEX II G/D 1, 1/2, 2 Ex ia IIC T6 ATEX II G/D 1/2, 2 Ex d ia IIC T6 FM IS Cl. I, II, III Div. 1,2 Gr. A-G Dual Seal FM XP Cl. I, II, III Div. 1,2 Gr. A-G Dual Seal ATEX II 3G Ex nA II T3...T6 NEPSI Ex ia IIC T3...T6 NEPSI Ex dia IIC T3...T6 CSA IS Cl. I, II, III Div. 1,2 Gr. A-G + Dual seal CSA XP Cl. I, II, III Div. 2 Gr. A-G + Dual seal IECEX Zone 0 Ex ia IIC T3...T6, Ex iaD 20 IECEX Zone 0/1 Exd [ia] IIC T3...T6, Ex tD [iaD] A21/20	Approval selection must match the approval designation of the original meter
Material Process Connection and Probe	Without 316L / 1.4404 - 40 bar Hastelloy C-22 / 2.4602 - 40 bar 316L / 1.4404 - 100 bar Hastelloy C-22 / 2.4602 - 100 bar	
Probe	Without Single rod dia. 8 mm (0.31"); length 1 m (3.28') min. to 4 m (13.12') max. Double rod dia. 8 mm (0.31"); length 1 m (3.28') min. to 4 m (13.12') max. Coax dia. 22 mm (0.87"); length 1 m (3.28') min. to 6 m (19.69') max. Single cable dia. 4 mm (0.16"); length 1 m (3.28') min. to 35m (114.83') max. Single cable dia. 8 mm (0.31"); length 1 m (3.28') min. to 35 m (114.83') max. Double cable dia. 4 mm (0.16"); length 1 m (3.28') min. to 8 m (26.25') max. Single cable Ø 4 mm / 0.16 inch FEP coated (1mm) max. 35 m / 114.83 ft Segmented single rod Ø 8mm Segmented coax Ø 22mm	Probe lengths are available in 3.94" (100 mm) increments. Refer to Length table
Probe End Type	Without (rod & coax version) Counterweight 12 mm (0.47") x 100 mm (3.94"); Single cable 8 mm (0.31") Counterweight 38 mm (1.5") x 245 mm (9.65"); Single cable 8 mm (0.31") Counterweight 20 mm (0.79") x 100 mm (3.94"); Single cable 4 mm (0.16") Counterweight 38 mm (1.5") x 60 mm (2.36"); Double cable 4 mm (0.16") Turnbuckle Chuck Threaded end Crimped end Open end	Refer to probe table. Based on Material, Probe and Probe End Type, only add price once per the required combination
Feedthrough / Temperature / Sealing	Without Standard: -40°C (-40°F)...+200°C (392°F), 40 bar (580 psi) max. / FKM/FPM Standard: -20°C (-4°F)...+200°C (392°F), 40 bar (580 psi) max. / Kalrez 6375 Standard: -50°C (-58°F)...+150°C (302°F), / EPDM	

0	a
2	r
3	p
6	•
7	•
A	r
E	r
F	p
H	•
K	•
M	r
N	p
- 0 -	•
- 1 -	•
- 2 -	b
- 3 -	•
- 4 -	b
- 0 -	•
- 1 -	c
- 2 -	d
- 3 -	e
- 4 -	f
- 5 -	g
- 6 -	h
- 8 -	z
- M -	c
- S -	e
- 0 -	•
- 1 -	•
- 2 -	•
- 3 -	•
- 4 -	•
- A -	•
- B -	•
- C -	•
- D -	•
- E -	•
- 0 -	•
- 1 -	•
- 2 -	•
- 5 -	•

TABLE III	Description	Selection	Availability
Process Connection EN	Without	000_	•
	G 3/4" A ISO229	100_	•
	G 1" A ISO228	200_	•
	G 1 1/2" A ISO228	300_	•
	DN 25 PN 40 Form B1 EN1092	400_	•
	DN 40 PN 40 Form B1 EN1092	500_	•
	DN 50 PN 40 Form B1 EN1092	600_	•
	DN 80 PN 40 Form B1 EN1092	700_	•
	DN 100 PN 16 Form B1 EN1092	800_	•
	DN 100 PN 40 Form B1 EN1092	A00_	•
	DN 150 PN 16 Form B1 EN1092	B00_	•
	DN 150 PN 40 Form B1 EN1092	C00_	•
	DN50 PN63 Form B1 EN1092	D00_	•
	DN80 PN63 Form B1 EN1092	E00_	•
	DN100 PN63 Form B1 EN1092	F00_	•
	DN25 PN63/PN100 Form B1 EN1092	K00_	•
	DN40 PN63/PN100 Form B1 EN1092	L00_	•
	DN50 PN100 Form B1 EN1092	M00_	•
	DN80 PN100 Form B1 EN1092	N00_	•
	DN100 PN100 Form B1 EN1092	P00_	•
DN150 PN63 Form B1 EN1092	R00_	•	
DN150 PN100 Form B1 EN1092	S00_	•	
Process Connection ASME	3/4" NPT	010_	•
	1" NPT	020_	•
	1 1/2" NPT	030_	•
	1" 150 lb RF ASME B16.5	040_	•
	1 1/2" 150 lb RF ASME B16.5	050_	•
	1 1/2" 300 lb RF ASME B16.5	060_	•
	2" 150 lb RF ASME B16.5	070_	•
	2" 300 lb RF ASME B16.5	080_	•
	3" 150 lb RF ASME B16.5	0A0_	•
	3" 300 lb RF ASME B16.5	0B0_	•
	4" 150 lb RF ASME B16.5	0C0_	•
	4" 300 lb RF ASME B16.5	0D0_	•
	6" 150 lb RF ASME B16.5	0E0_	•
	8" 150 lb RF ASME B16.5	0F0_	•
	6" 300 LBS RF ASME B16.5	0G0_	•
	1" 600LBS RF ASME B16.5	0M0_	•
	1" 1/2 600LBS RF ASME B16.5	0N0_	•
	2" 600LBS RF ASME B16.5	0P0_	•
	3" 600LBS RF ASME B16.5	0R0_	•
	4" 600LBS RF ASME B16.5	0S0_	•
1" 900LBS/1500LBS RF ASME B16.5	0T0_	•	
1" 1/2 900LBS/1500LBS RF ASME B16.5	0U0_	•	
2" 900LBS/1500LBS RF ASME B16.5	0V0_	•	
3" 900LBS RF ASME B16.5	0W0_	•	
4" 900LBS RF ASME B16.5	0X0_	•	
Process Connection Other	10K 40A RF JIS B2220	005_	•
	10K 50A RF JIS B2220	006_	•
	10K 80A RF JIS B2220	007_	•
	10K 100A RF JIS B2220	008_	•
Electronic Module	Without	___0	•
	Terminal module (Non-Ex or Ex i) + screws	___3	k
	Backend (1 output) + High frequency module	___4	•
	HMI cover + cable (Aluminium)	___5	m
	Complete head with HMI (Aluminium)	___6	n
	Complete head with blind cover (Aluminium)	___7	w
	Complete head with HMI (Stainless steel)	___8	n
	Complete housing with HMI + electronic module (Aluminium)	___A	n
	Complete head with blind cover (Stainless steel)	___C	w
	Complete housing with HMI + electronic module (Stainless steel)	___D	n
Terminal module (Ex d) + screws	___E	x	
HMI cover + cable (Stainless steel)	___F	m	

TABLE IV

		Selection	Availability
Output	Without Output: 4...20mA (Hart) 1 Output: 4...20mA (Hart) + Interface 2 Outputs 4...20mA (Hart) + 4...20mA 2 Outputs 4...20mA (Hart) + 4...20mA + Interface	0 ---- 1 ---- 2 ---- 3 ---- 4 ----	• • • • •
HMI (display & keys)	Without English German French Italian Spanish Portugese Japanese Chinese (Mandarin) Russian	_ 0 _ _ _ _ 1 _ _ _ _ 2 _ _ _ _ 3 _ _ _ _ 4 _ _ _ _ 5 _ _ _ _ 6 _ _ _ _ 7 _ _ _ _ 8 _ _ _ _ A _ _ _	• • • • • • • • • •
Version	Honeywell	_ _ V _ _	•
Accessories	Without Stainless steel weather protection n°13 Cable entry M20x1,5 (ALU) M25x1,5 (SS) / without gland Screws + gaskets (kit for 1 unit) n° 3 + 4 + 6 + 8 + 10 Wiring compartment cover + gasket n° 9 + 10 Cable entry 1/2" NPT / without gland Cable entry G 1/2" / without gland (not for Sst housing) Cable entry M20x1,5 (ALU) M25x1,5 (SS) / plastic gland (Std: black, Ex ia:blue) Cable entry M20x1,5 (ALU) M25x1,5 (SS) / metal gland (Ex d devices only) Beige plastic sun shade n° 11 + 12 Blind cover + gasket + screws n° 2 + 3 + 4 Converter VIATOR RS232 / HART Converter USB / HART ESD protection 30KV Metaglas® sealing	--- 0 _ --- 1 _ --- 2 _ --- 3 _ --- 4 _ --- 5 _ --- 6 _ --- 7 _ --- 8 _ --- A _ --- B _ --- C _ --- D _ --- F _ --- G _	• • • • • • • • • • • • • • •
Housing Option	Without Remote Version / 2 m (2180mm; 6.56 ft.) Remote Version / 4.5 m (4720 mm; 14.76 ft.) Remote Version / 9.5 m (9800 mm; 31.17 ft.) Remote Version / 14.5 m (14880 mm; 47.57 ft.)		For Available Probe Lengths based on the remote electronics selected, refer to the length table.
		--- 0 --- 3 --- 4 --- 5 --- 6	• s t u v

TABLE V

Probe Length	Ordered in 100mm increments, minimum length 1000mm	--- 0 0	see length table
--------------	--	---------	------------------

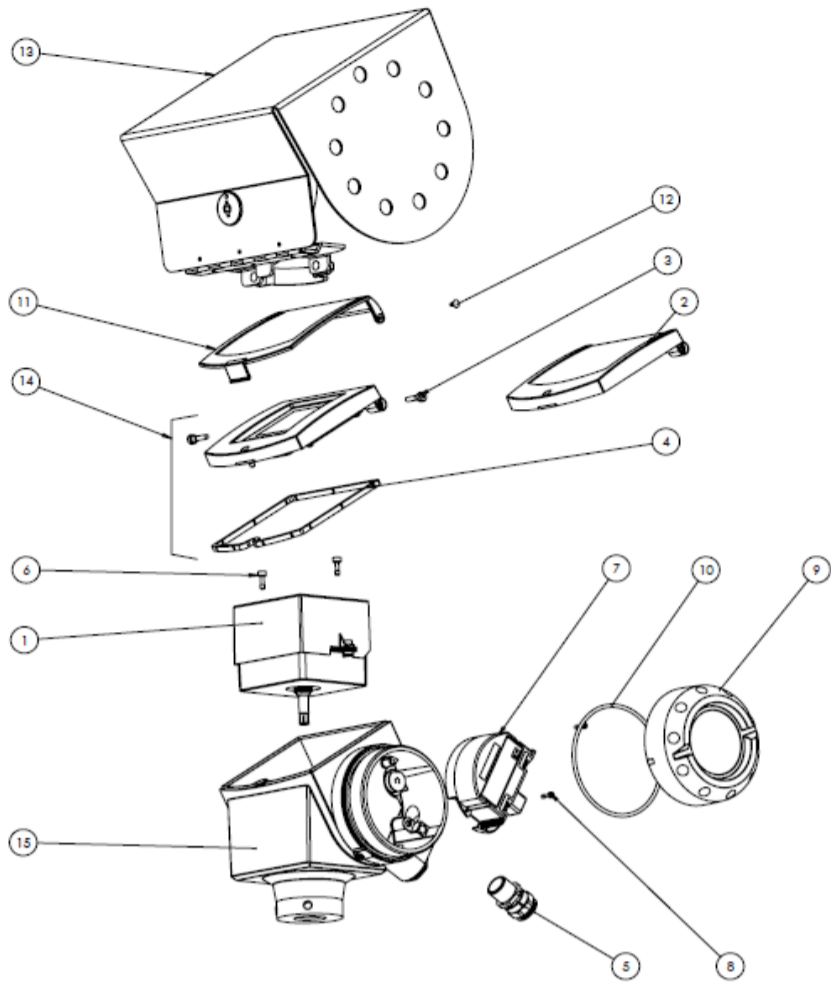
RESTRICTIONS

Restrictions	Available only with		Not Available with	
	Letter	Table Selection	Table	Selection
a			IV	___8_
b			II	___5_ , ___6_ , ___8_ , ___1_ , ___2_ , ___4_ , ___A_ , ___B_
c	II	___0_		
d	II	___0_	III	100_ , 200_ , 400_ , 500_ , K00_ , L00_ , 010_ , 020_ , 040_ , 050_ , 060_ , 0M0_ , 0N0_ , 0T0_ , 0U0_ , 005_
			IV	___F_
e	II	___0_	IV	___F_
f			II	___0_ , ___1_ , ___2_ , ___4_
g			II	_3_ , _4_ , ___0_ , ___3_ , ___4_ , ___5_
	IV	0_ , 1_ , 3_ , A_ , D_	III	100_ , 200_ , 400_ , K00_ , 010_ , 020_ , 040_ , 0M0_ , 0T0_
			IV	_5_ , _6_
h	II	___4_ , ___A_ , ___C_		
			III	100_ , 200_ , 400_ , 500_ , K00_ , L00_ , 010_ , 020_ , 040_ , 050_ , 060_ , 0M0_ , 0N0_ , 0T0_ , 0U0_ , 005_
			IV	___F_
k			II	3_ , 7_ , K_
			IV	0_
m			IV	_0_
n			IV	00_
p			IV	___7_ , ___F_
r			IV	___8_ , ___F_

Additional restrictions can be found on page 4

RESTRICTIONS

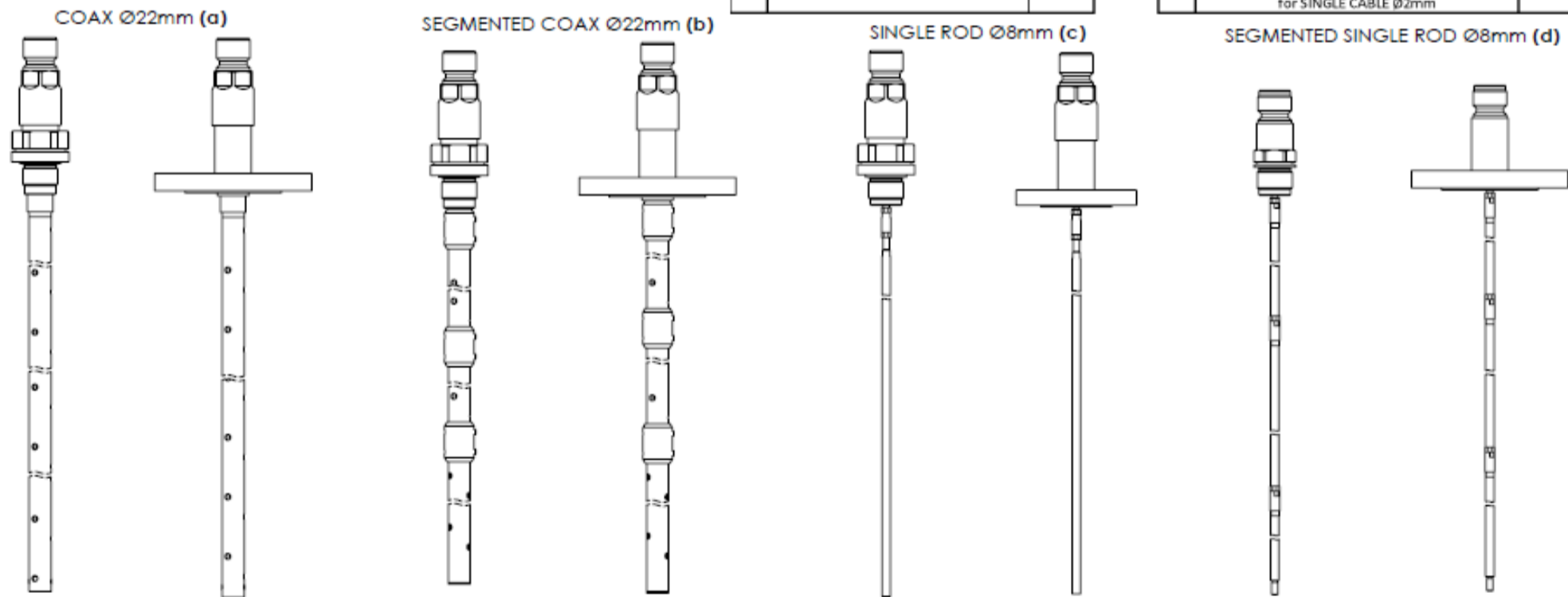
Restrictions		Available only with		Not Available with	
Letter	Table	Selection	Table	Selection	
s	II	__ 1 __, __ 2 __, __ M __			
	V	maximum probe length 4 m			
		or			
	II	__ 3 __, __ S __			
	V	maximum probe length 6 m			
		or			
	II	__ 6 __			
	V	maximum probe length 8 m			
	or				
	II	__ 4 __, __ 5 __, __ 8 __			
	V	maximum probe length 30 m			
t	II	__ 1 __, __ 2 __, __ M __			
	V	maximum probe length 4 m			
		or			
	II	__ 3 __, __ S __			
	V	maximum probe length 6 m			
		or			
	II	__ 6 __			
	V	maximum probe length 8 m			
	or				
	II	__ 4 __, __ 5 __, __ 8 __			
	V	maximum probe length 25 m			
u	II	__ 1 __, __ 2 __, __ M __			
	V	maximum probe length 4 m			
		or			
	II	__ 3 __, __ S __			
	V	maximum probe length 6 m			
		or			
	II	__ 6 __			
	V	maximum probe length 8 m			
	or				
	II	__ 4 __, __ 5 __, __ 8 __			
	V	maximum probe length 15 m			
v	II	__ 1 __, __ 2 __, __ M __			
	V	maximum probe length 4 m			
		or			
	II	__ 3 __, __ S __			
	V	maximum probe length 5 m			
		or			
	II	__ 6 __			
	V	maximum probe length 5 m			
	or				
	II	__ 4 __, __ 5 __, __ 8 __			
	V	maximum probe length 5 m			
w			IV	0 ____	
x	II	3 ____, 7 ____, K ____	IV	0 ____	
z	II	__ 1 __, __ 2 __	II	__ 0 __, __ 1 __, __ 2 __, __ 4 __, __ A __, __ B __	



Rep.	Reference	Description	Quantity
1	400659401	ELECTRONIC MODULE	1
2	F3177240100	BLIND COVER	1
3	F3177340000	SCREWS FOR COVER	2
4	F3177420000	COVER GASKET	1
5	VOIR TABLEAU 1	CABLE GLAND	1
6	F3177360100	SCREW FOR BACK END ELECTRONIC	2
7	VOIR TABLEAU 2	TERMINAL MODULE	1
8	F3177350000	SCREWS FOR TERMINAL MODULE	2
9	F3177260100	WIRING COMPARTMENT COVER	1
10	F5091150000	WIRING COMPARTMENT COVER SEAL	1
11	F3179980000	BLUE PLASTIC SUN SHADE	1
12	F3179990000	PINS FOR PLASTIC SUN SHADE	2
13	F2096340000	STAINLESS STEEL WEATHER PROTECTION	1
14	XF71400000000500100	HMI COVER AND CABLE (OF 1300)	1
15	F3177280100	HOUSING BODY	1

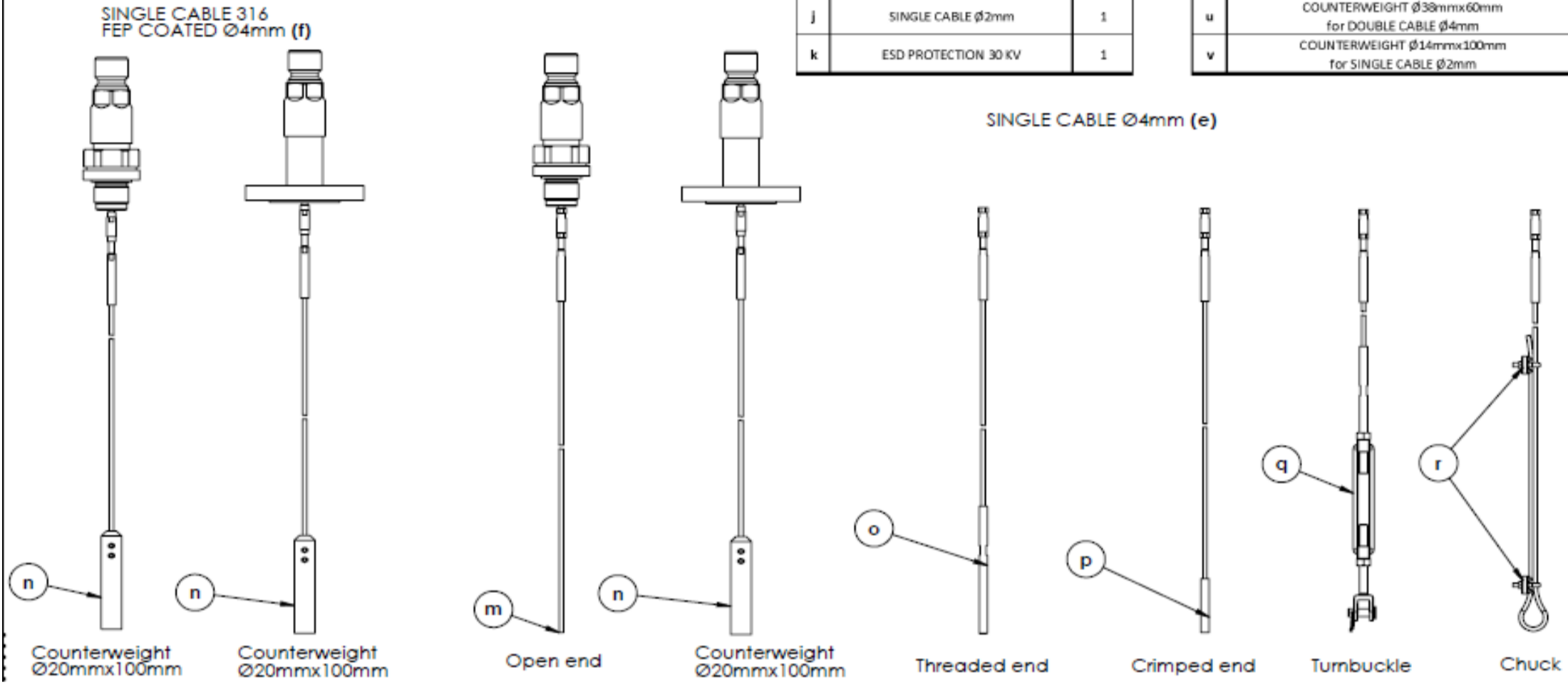
Rep.	Description	Quantity
a	COAX Ø22mm	1
b	SEGMENTED COAX Ø22mm	1
c	SINGLE ROD Ø8mm	1
d	SEGMENTED SINGLE ROD Ø8mm	1
e	SINGLE CABLE Ø4mm	1
f	SINGLE CABLE 316 FEP COATED Ø4mm	1
g	SINGLE CABLE Ø8mm	1
h	DOUBLE CABLE Ø4mm	1
i	DOUBLE ROD Ø8mm	1
j	SINGLE CABLE Ø2mm	1
k	ESD PROTECTION 30 KV	1

Rep.	Description	Quantity
l	METAGLAS SEALING	1
m	OPEN END SINGLE CABLE Ø4mm OR Ø8mm	1
n	COUNTERWEIGHT Ø20mmx100mm for SINGLE CABLE Ø4mm	1
o	THREADED END for SINGLE CABLE	1
p	CRIMPED END for SINGLE CABLE	1
q	TURNBUCKLE for SINGLE CABLE	1
r	CHUCK for SINGLE CABLE	1
s	COUNTERWEIGHT Ø12mmx100mm for SINGLE Ø8mm	1
t	COUNTERWEIGHT Ø38mmx245mm for SINGLE Ø8mm	1
u	COUNTERWEIGHT Ø38mmx60mm for DOUBLE CABLE Ø4mm	1
v	COUNTERWEIGHT Ø14mmx100mm for SINGLE CABLE Ø2mm	1



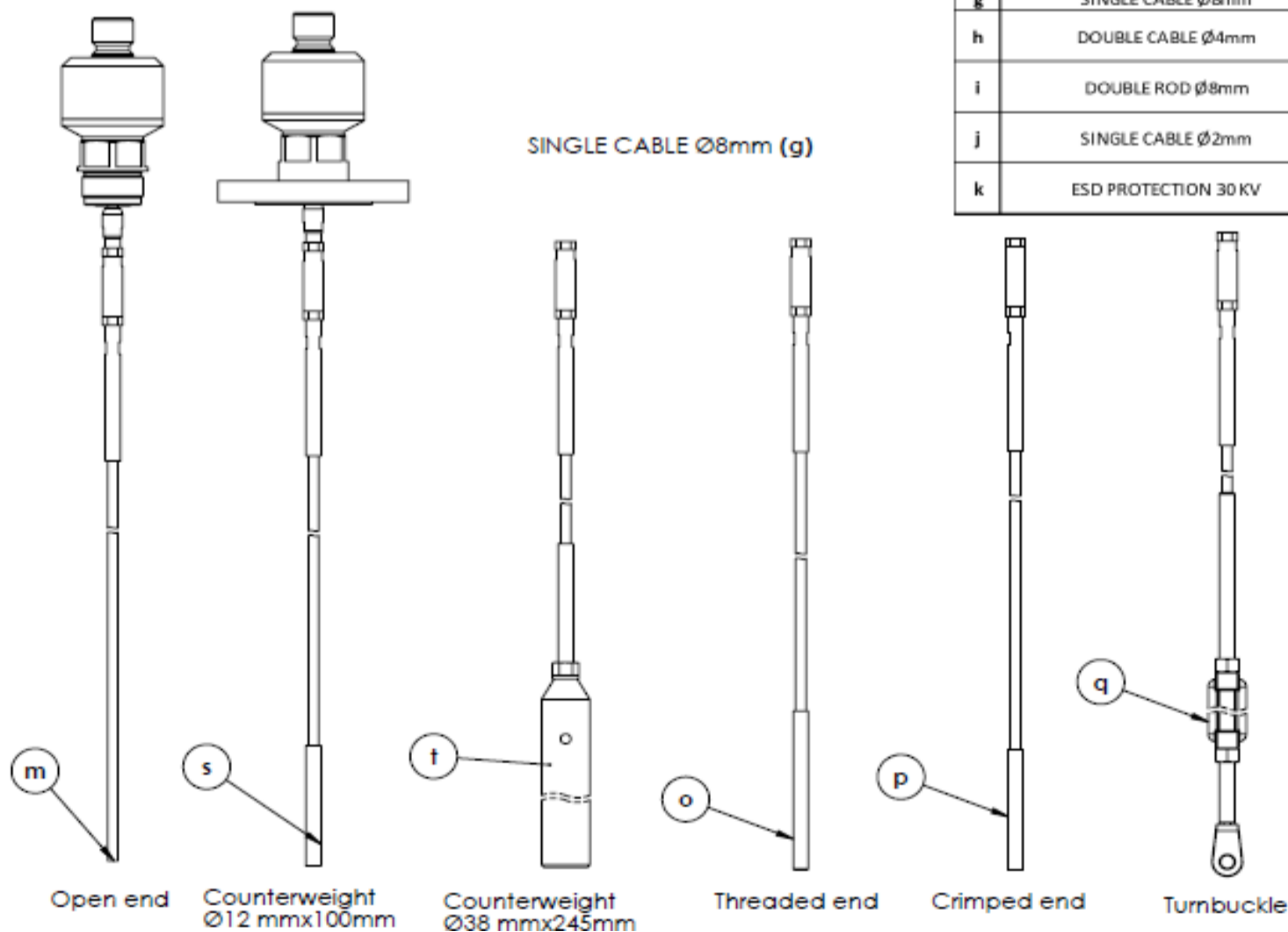
Rep.	Description	Quantity
a	COAX Ø22mm	1
b	SEGMENTED COAX Ø22mm	1
c	SINGLE ROD Ø8mm	1
d	SEGMENTED SINGLE ROD Ø8mm	1
e	SINGLE CABLE Ø4mm	1
f	SINGLE CABLE 316 FEP COATED Ø4mm	1
g	SINGLE CABLE Ø8mm	1
h	DOUBLE CABLE Ø4mm	1
i	DOUBLE ROD Ø8mm	1
j	SINGLE CABLE Ø2mm	1
k	ESD PROTECTION 30 KV	1

Rep.	Description	Quantity
l	METAGLAS SEALING	1
m	OPEN END SINGLE CABLE Ø4mm OR Ø8mm	1
n	COUNTERWEIGHT Ø20mmx100mm for SINGLE CABLE Ø4mm	1
o	THREADED END for SINGLE CABLE	1
p	CRIMPED END for SINGLE CABLE	1
q	TURNBUCKLE for SINGLE CABLE	1
r	CHUCK for SINGLE CABLE	1
s	COUNTERWEIGHT Ø12mmx100mm for SINGLE Ø8mm	1
t	COUNTERWEIGHT Ø38mmx245mm for SINGLE Ø8mm	1
u	COUNTERWEIGHT Ø38mmx60mm for DOUBLE CABLE Ø4mm	1
v	COUNTERWEIGHT Ø14mmx100mm for SINGLE CABLE Ø2mm	1

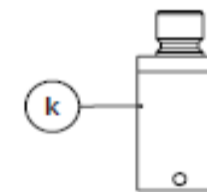


Rep.	Description	Quantity
a	COAX Ø22mm	1
b	SEGMENTED COAX Ø22mm	1
c	SINGLE ROD Ø8mm	1
d	SEGMENTED SINGLE ROD Ø8mm	1
e	SINGLE CABLE Ø4mm	1
f	SINGLE CABLE 316 FEP COATED Ø4mm	1
g	SINGLE CABLE Ø8mm	1
h	DOUBLE CABLE Ø4mm	1
i	DOUBLE ROD Ø8mm	1
j	SINGLE CABLE Ø2mm	1
k	ESD PROTECTION 30 KV	1

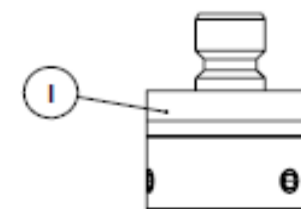
Rep.	Description	Quantity
l	METAGLAS SEALING	1
m	OPEN END SINGLE CABLE Ø4mm OR Ø8mm	1
n	COUNTERWEIGHT Ø20mmx100mm for SINGLE CABLE Ø4mm	1
o	THREADED END for SINGLE CABLE	1
p	CRIMPED END for SINGLE CABLE	1
q	TURNBUCKLE for SINGLE CABLE	1
r	CHUCK for SINGLE CABLE	1
s	COUNTERWEIGHT Ø12mmx100mm for SINGLE Ø8mm	1
t	COUNTERWEIGHT Ø38mmx245mm for SINGLE Ø8mm	1
u	COUNTERWEIGHT Ø38mmx60mm for DOUBLE CABLE Ø4mm	1
v	COUNTERWEIGHT Ø14mmx100mm for SINGLE CABLE Ø2mm	1



ESD PROTECTION 30KV (k)



METAGLAS SEALING (l)



Rep.	Description	Quantity
a	COAX Ø22mm	1
b	SEGMENTED COAX Ø22mm	1
c	SINGLE ROD Ø8mm	1
d	SEGMENTED SINGLE ROD Ø8mm	1
e	SINGLE CABLE Ø4mm	1
f	SINGLE CABLE 316 FEP COATED Ø4mm	1
g	SINGLE CABLE Ø8mm	1
h	DOUBLE CABLE Ø4mm	1
i	DOUBLE ROD Ø8mm	1
j	SINGLE CABLE Ø2mm	1
k	ESD PROTECTION 30KV	1

Rep.	Description	Quantity
l	METAGLAS SEALING	1
m	OPEN END SINGLE CABLE Ø4mm OR Ø8mm	1
n	COUNTERWEIGHT Ø20mmx100mm for SINGLE CABLE Ø4mm	1
o	THREADED END for SINGLE CABLE	1
p	CRIMPED END for SINGLE CABLE	1
q	TURNBUCKLE for SINGLE CABLE	1
r	CHUCK for SINGLE CABLE	1
s	COUNTERWEIGHT Ø12mmx100mm for SINGLE Ø8mm	1
t	COUNTERWEIGHT Ø38mmx245mm for SINGLE Ø8mm	1
u	COUNTERWEIGHT Ø38mmx60mm for DOUBLE CABLE Ø4mm	1
v	COUNTERWEIGHT Ø14mmx100mm for SINGLE CABLE Ø2mm	1

DOUBLE CABLE Ø4mm (h)

DOUBLE ROD Ø8mm(i)

