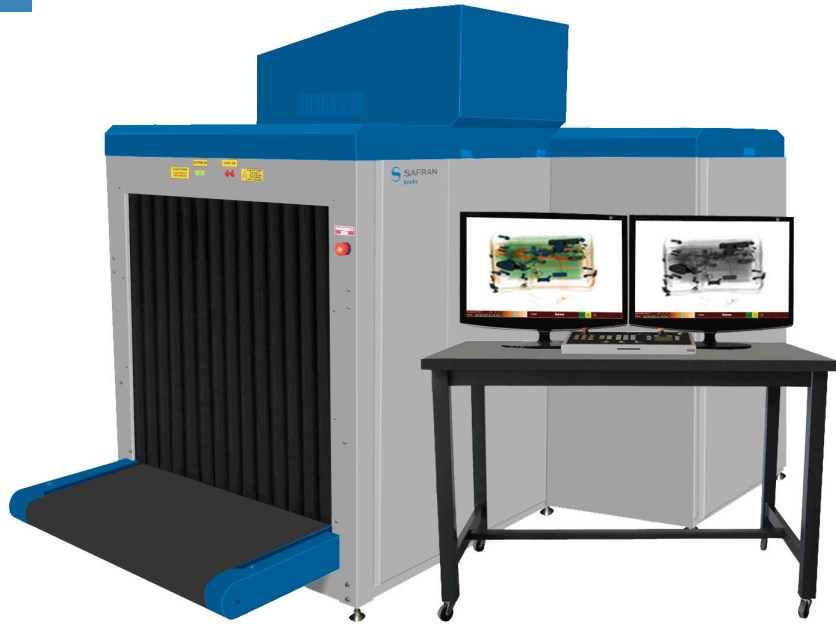


# HRX 1000 DV-D™

LARGE BAGGAGE AND PARCEL INSPECTION



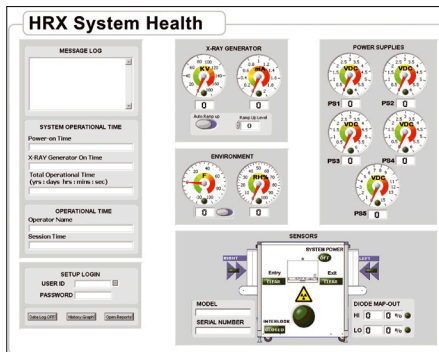
Morpho Detection's HRX 1000 DV-D is the newest Dual View X-Ray Inspection System featuring a tunnel size of 100 x 100 cm (39.4 in. x 39.4 in.). The HRX 1000 DV-D combines dual view technology with a low conveyor height of just 30 cm (12") for optimal heavy object screening.

Dual view technology utilizes two generators, creating two image perspectives. Coupled with 6 Color Imaging, dual view technology enables operators to increase image manipulation and object recognition.

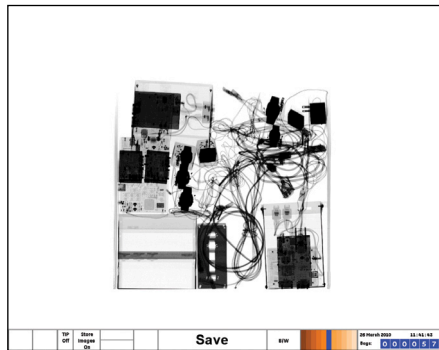
The HRX 1000 DV-D's low conveyor design and dual view detection enable operators to quickly scan heavy objects without any loss in threat detection accuracy.

## Benefits

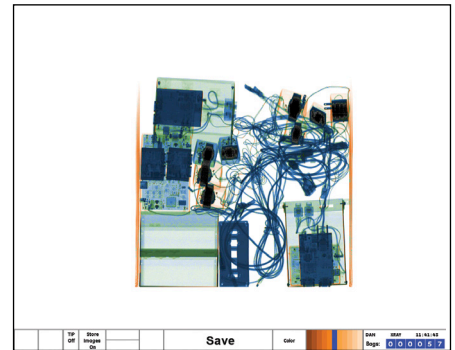
- Compact inspection system
- Cost-effective solution ideal for screening small parcels in airports, government offices, and other business applications
- Windows® XP Professional platform, utilizing the central structure, reduced hardware costs, minimal interfaces, easy upgrade paths, full integration
- High-speed Ethernet TCP/IP data communication capability.
- Network capability with other inspection systems to maximize a comprehensive checkpoint solution



The System Health screen provides continuous diagnostic information.



Black and white bag image.



Color bag image.

## HIGH-QUALITY IMAGES. FLEXIBLE SOLUTION.

### Real-Time Diagnostics

All HRX Systems are equipped with Real-Time Diagnostics, a unique Morpho Detection feature which allows users to monitor their machine health, thus greatly increasing the system lifespan.

### Robust Network Design

The HRX 1000 DV-D is equipped with high-speed Ethernet TCP/IP data communication capability. Images from any HRX model can be sent securely through the network to a central server where they can be viewed, stored, and printed. The HRX 1000 DV-D is also designed to network with other inspection systems to maximize a comprehensive checkpoint solution.

### Standard Features

- 6 Color Imaging
- Image Review (100 Images)
- 9 Quadrant Zoom
- Manual Bitmap Archive
- Atomic Z-Number Measurement
- Material Discrimination
- Auto Image Archiving (50,000 Images)
- Multi-Tier Accessibility
- Baggage Counter
- Network Ready
- Color and Black / White Imaging
- Organic/Inorganic Imaging
- Continuous Scanning
- Operator Training Program
- Continuous Zoom 2x to 32x
- Picture Perfect
- Density Alert
- Print Image Capable
- Edge-Enhancement Imaging

- Pseudo Color
- Geometric Image Distortion Correction
- Real-Time Image Manipulation
- High Penetration Function
- Real-Time Self Diagnostics
- Heavy Duty Roller Casters
- Reverse Monochrome
- Image Annotation
- Vertical Zoom Panning

### Optional Accessories and Features

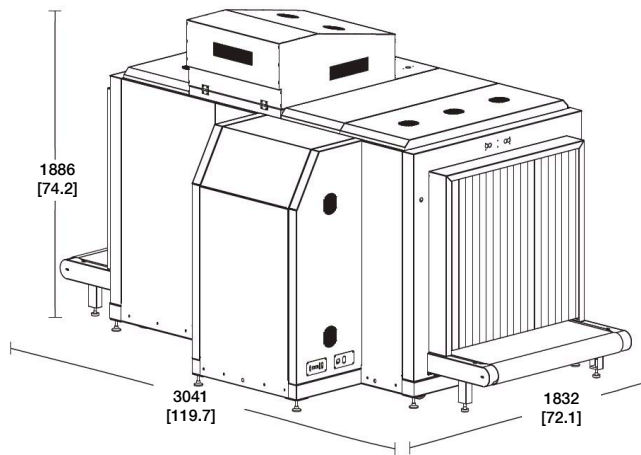
- ASTM 10 Stepwedge/ASTM F0792-01E2 Test Case
- Climate Variable Operating Kit
- Custom Paint
- Entry / Exit Roller Tables (50 cm Increments)
- Extended Image Archiving (100,000 Images)
- Footmat Operator Interlock
- Heavy Duty Rubber Casters
- Local Language Support (Arabic, Chinese, French, Spanish, and more)
- Radiation Meter
- Remote Workstation Configuration
- Screener Assist Software
- Threat Image Projection (TIP) Software

## CUSTOMER SERVICE

Morpho Detection provides flexible support programs and training to optimize product performance and increase customer satisfaction. Our 24-hour Customer Assistance Center (CAC) provides prompt access to qualified technical support personnel and an Integrated Response Program. Meanwhile, our training experts provide specialized instruction to operators through year-round on-site and computer-based courses.

For successful HRX 1000 DV-D product integration, Morpho Detection can provide our Project Management team to plan for proper design layout and deployment. Please contact us to learn how Morpho Detection can support your security needs.

## &gt; Dimensional Drawings (dimensions in millimeters [inches])



## TECHNICAL SPECIFICATIONS

(Guarantees measured using Manufacturer's test piece)

<b>Sensitivity</b>	40 gauge wire typical, 38 standard
<b>Penetration</b>	View 1: 37 mm steel typical, 35 mm standard View 2: 39 mm steel typical, 37 mm standard
<b>Contrast Sensitivity</b>	24 visible levels, 4096 gray levels
<b>Power Requirements</b>	120VAC: 20 Amp Max 198-230VAC 50/60 HZ: 15 Amp Max

### Environmental Conditions

<b>Operating Temperature</b>	0 to 40°C (32 to 104°F)
<b>Storage Temperature</b>	-20 to 60°C (-4 to 140°F)
<b>Humidity</b>	Up to 95% non-condensing

### Video Display

Dual 24 in. (60.96 cm) high-resolution, low radiation, ergonomic, LCD color monitors	
<b>Display Resolution</b>	1600 x 1200; 24 bit/pixel color

### X-ray Detector

2304 channels in an "L"-shaped array per assembly for a total of 4608 channels for both assemblies	
--	--

### X-ray Generator

<b>Voltage</b>	Dual 180 kV, Operating at 165 kV
<b>Tube Current</b>	Dual 1.0 mA
<b>Cooling</b>	Sealed Di-Electric Oil Bath with Forced Air
<b>Duty Cycle</b>	100%
<b>Beam Direction</b>	Diagonally Downward Horizontally Sideward

### Physical Specifications

<b>Net Weight</b>	Approx. 1605 kg (3540 lb.)
<b>Gross Weight</b>	Approx. 1845 kg (4060 lb.)
<b>Tunnel Opening</b>	1000 mm (39.4 in.) x 1000 mm (39.4 in.)
<b>Conveyor Speed</b>	0.23 m/s (44 ft/min) in forward or reverse
<b>Conveyor Height</b>	300 mm (12 in.) from floor
<b>Conveyor Capacity</b>	200 kg evenly distributed load (440 lb.)
<b>Dimensions (l x w x h)</b>	3041 mm x 1832 mm x 1886 mm (120 in. x 72.1 in. x 74.2 in.)

### Computer Specification

Intel® Core i5, 3.1 GHz, 6MB cache, 2GB RAM at 1333 MHz, 500GB HDD, 1GB Video Card, Dual Digital Display, Windows®XP Pro, Uninterrupted Power Supply (UPS)

### Health and Safety

Complies with published international standards including the U.S.F.D.A., Center for Devices and Radiation Health performance standards for cabinet X-ray systems (Federal Standard 21-CFR 1020.40). Typical leakage radiation is less than 0.1mR/hr, compared with maximum leakage at 0.5mR/hr permitted by the Federal Standard. Film safety guaranteed for high speed films up to ISO 1600.

### ISO 9001:2000

Morpho Detection, Inc. is an ISO 9001:2000 certified organization.

## KEY MISSIONS, KEY TECHNOLOGIES, KEY TALENTS

© 2010-2014 Morpho Detection, LLC. All rights reserved. HRX is a trademark of Morpho Detection, LLC.  
Features and specifications are subject to change without notice. EXOR6 7/14 GBV4 DAT 7/14

### Morpho Detection

Tel: +1 510 739 2400 Fax: + 510 739 6400 [www.morphodetection.com](http://www.morphodetection.com)  
Headquarters: 7151 Gateway Boulevard, Newark, CA 94560 USA

