



UniFlood M G2

BVP355 180LED 30K 220V L50 10

28630 lm – 360 W – 3000 K

The Philips UniFlood M gen2 is a cost-effective, exterior-rated architectural LED floodlight that's designed for façade, landscape and outdoor floodlighting applications. The robust, modular, rectangular design features highly-efficient optics, making it ideal for illuminating everything from multi-storey façades and bridges to landmarks and monuments. This LED floodlight is available in white, monochromatic colours, RGB, RGBW and tunable white. It comes with six different spread lenses ranging from narrow spot to wide flood and has DMX512/RDM control option. A truly modular floodlight that gives architects and designers the freedom to explore a wide range of concepts and designs with no limitations.

Warnings and Safety

- For outdoor use only.

Product data

| General information | |
|--------------------------|--|
| Light source colour | 830 warm white |
| Driver included | Yes |
| Optical cover/lens type | GC [Clear glass] |
| Control interface | - |
| Connection | Flying leads/cables |
| Cable | Cable without plug 3-pole |
| Protection class IEC | Safety class I |
| Flammability mark | F [For mounting on normally flammable surfaces] |
| CE mark | CE mark |
| Operating and electrical | |
| Input Voltage | 220 to 240 V |

| Input frequency | 50 to 60 Hz |
|-----------------------------|--------------------|
| Inrush current | 60 A |
| Power factor (min.) | 0.9 |
| Controls and dimming | |
| Dimmable | No |
| Mechanical and housing | |
| Housing material | Extruded aluminium |
| Optical cover/lens material | Acrylate |
| Overall length | 486 mm |
| Overall width | 478 mm |
| Overall height | 231 mm |

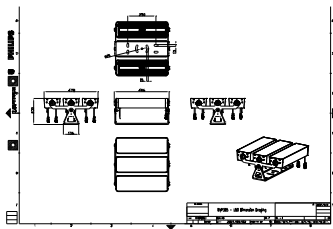
UniFlood M G2

| | |
|-------------------------------------|---|
| Effective projected area | 0.234 m² |
| Colour | Dark Grey |
| Dimensions (height x width x depth) | 231 x 478 x 486 mm |
| Approval and application | |
| Ingress protection code | IP66 [Dust penetration-protected, jet-proof] |
| Mech. impact protection code | IK06 [1 J] |
| Initial performance (IEC compliant) | |
| Initial luminous flux (system flux) | 28630 lm |
| Luminous flux tolerance | +/-10% |
| Initial LED luminaire efficacy | 80 lm/W |
| Init. Corr. Colour Temperature | 3000 K |
| Init. Colour rendering index | >80 |
| Initial chromaticity | 4 SDCM |
| Initial input power | 360 W |
| Power consumption tolerance | +/-10% |

| | |
|-----------------------------------|-------------------------------|
| Application conditions | |
| Ambient temperature range | -40 to +50 °C |
| Product data | |
| Full product code | 871951492932600 |
| Order product name | BVP355 180LED 30K 220V L50 10 |
| EAN/UPC – product | 8719514929326 |
| Order code | 92932600 |
| SAP numerator – quantity per pack | 1 |
| Numerator – packs per outer box | 1 |
| SAP material | 911401750113 |
| Net Weight (Piece) | 18.750 kg |



Dimensional drawing



BVP355 180LED 30K 220V L50 10

