

Quick Start Guide

J Series by ATEL



4G LTE Outdoor CPE

Model: AOL-J912

4G LTE Bands 2/4/5/12/13/14/25/26/66



Version 2.0

About your J-Series CPE

The J-Series ODU (Outdoor Unit) is specially designed to be installed outside (like on a roof) over the pole or a wall. That helps ODU to receive better 4G-LTE signals and feed them into the home or internal living space via an Ethernet cable using the POE feature.

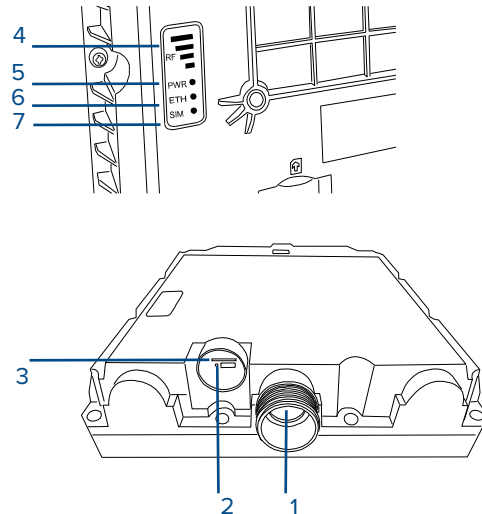


Figure 1. LEDs & Ports Location

Device Ports & LED Interface

1	Ethernet RJ45 Port Receive Power & connect with your computer over Ethernet via PoE.	5	PWR (Power) Power LED. LED On indicates the device is turned on. LED Off indicates that the device is powered off.
2	Reset Button Pressing this button helps device configurations convert to factory defaults.	6	ETH (Ethernet) Ethernet LED. LED On indicates the Ethernet/LAN connection is established. LED Off indicates the Ethernet/LAN connection is not established.
3	SIM Slot Regular (2FF) SIM card needs to be inserted as directed.		
4	RF Network Signal Bars. These LEDs indicate the receiving signal quality. More LED bars represents better signal.	7	SIM SIM Card LED. LED On indicates the SIM card is inserted and can be detected. LED Off indicates no SIM is detected.

Table 1. Port & LED Definitions

Package Contents

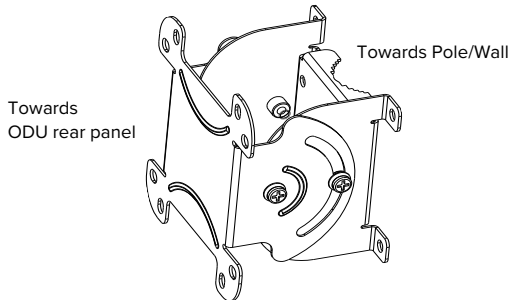
- J-Series ODU Unit
- Installation Kit
 - Mounting Bracket
 - #2 Phillips Head Screws x4
 - U-Bolt Clamp Set 2 with M6 Nuts x4
- **Tools not Provided**
 - POE Injector x1 (110-240V)
 - POE Power Cord x1
 - Quick Start Guide

Note:

- Use only the provided accessories as mentioned above.
- If you find anything missing from Package contents as listed above, kindly contact ATEL at support@atel-usa.com.

Installation Kit

- Mounting Bracket



- #2 Phillips Head Screw x4



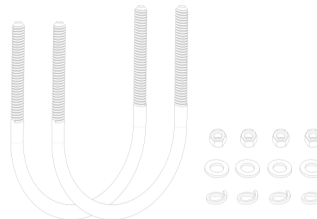
- M6 Nut x4



Helps to attach mounting bracket to ODU rear panel.

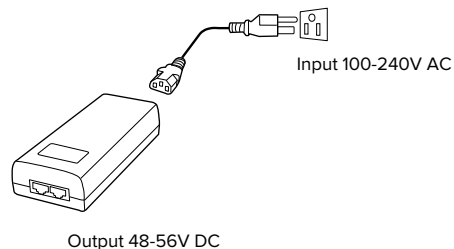
- U-bolt Clamp Set

Helps to affix the ODU with the mounting bracket to a pole.



NOTE: Tools not included in the installation kit.

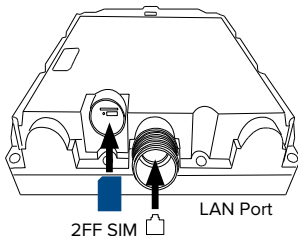
PoE Injector + Power Cord



Setting up your J-Series ODU

Install the SIM Card & Connect the Ethernet Cable

1. Unscrew the covers from the SIM card slot and Ethernet LAN port on the bottom panel.

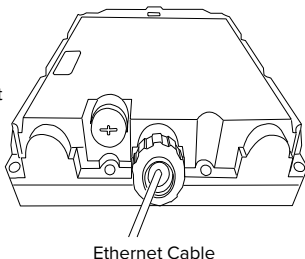


2. This ODU device is designed to connect to a 4G LTE network. Kindly ensure that you have an active LTE SIM card from your service provider.
Note: Insert Standard SIM card (2FF) size to SIM slot as directed with image.

3. Connect an Ethernet cable to the LAN port on the bottom panel of this device, threading it through the hole on the Ethernet cover.

Note: Must use a 4 pair Ethernet cable.

4. Tighten both covers on the bottom panel of the device.

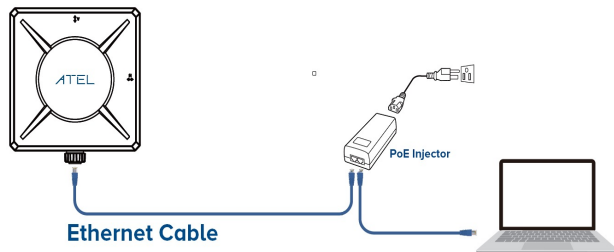


Power ON your J-Series ODU

- To turn on your device, you need to connect the Ethernet cable coming from the ODU to the PoE injector's P+D/OUT Port.
 - Now connect power cord to PoE injector's AC/IN Port.
 - The Power LED on the ODU should now be on; this indicates that the ODU is successfully powered ON.
- Note:** Must use a 4 pair Ethernet cable between ODU & PoE Injector.

Using PoE to Connect J-Series ODU with PC

- To connect your ODU to your PC, first turn the ODU on using the PoE injector.
- Connect your computer/PC with the PoE's Data/IN Port using the Ethernet cable. Make sure your computer's Ethernet is configured to obtain an IP address automatically.



! Please only use the provided Power adaptor & PoE injector with the ODU. The use of other incompatible adaptors & PoE may cause damage to your device and void the warranty.

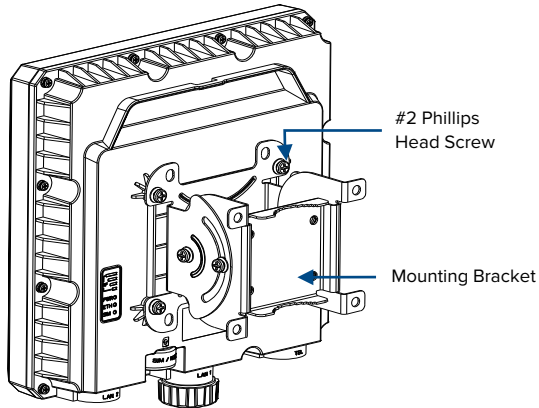
Installation of your J-Series ODU

1. Place the ODU outside and facing an open area towards an eNodeB/ Cell Tower. Obstructions such as concrete walls, glass partitions or wooden walls affect the transmission and reception of network signals.
2. Keep the ODU away from household electrical appliances that produce strong electric or magnetic fields such as dish satellite antennas.

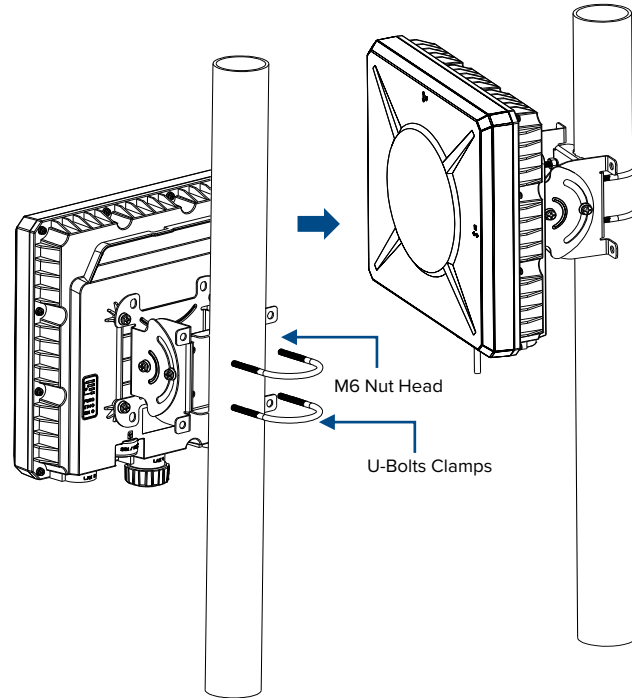
Note: Tools required during installation: M6 Wrench and #2 Phillips Screwdriver (tools not included in installation kit).

To Mount on a Pole

1. Attach the mounting bracket to the rear panel of the ODU using four M6 mounting nuts.



2. Attach the U-shaped side of the bracket to the pole using the provided U bolt clamps.

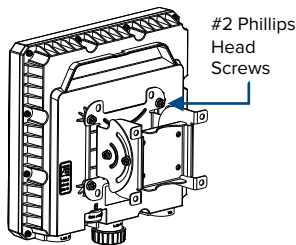


To Mount on a Wall

Note: Wall Mount tools and installation kit items are not included.

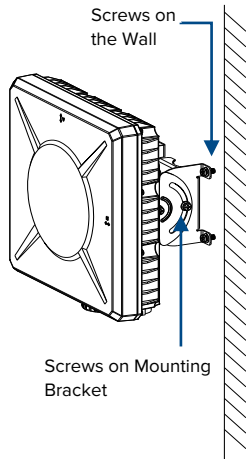
Fix Mounting Brackets to ODU

1. Use four screws to attach the mounting bracket to the rear panel of the ODU. If required, use screws used to stack two mounting brackets together, allowing the ODU CPE's angle to be adjusted horizontally or vertically.



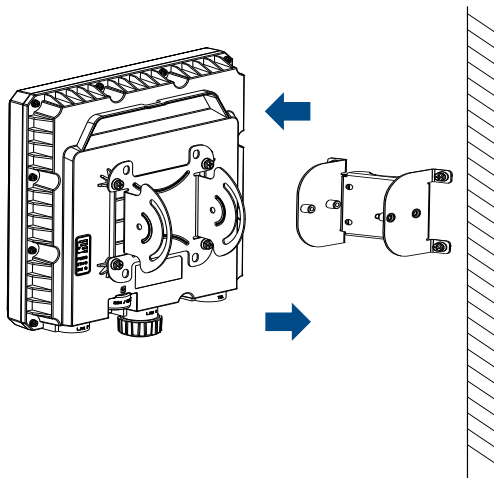
Fix Mounting Bracket to the Wall

1. Place the U-shaped mounting bracket against the wall in the desired position and mark the location for holes.
2. Use a 4mm drill bit to make four holes approximately 30mm deep, then insert four wall anchors into the holes.
3. Use four screws to attach the ODU with mounting bracket to the wall.



Affix/Align Mounting Brackets

1. Unscrew the screws used to stack two mounting brackets together. This also helps the ODU CPE's angle to be adjusted horizontally or vertically depending upon wall /pole side mounting bracket installation.

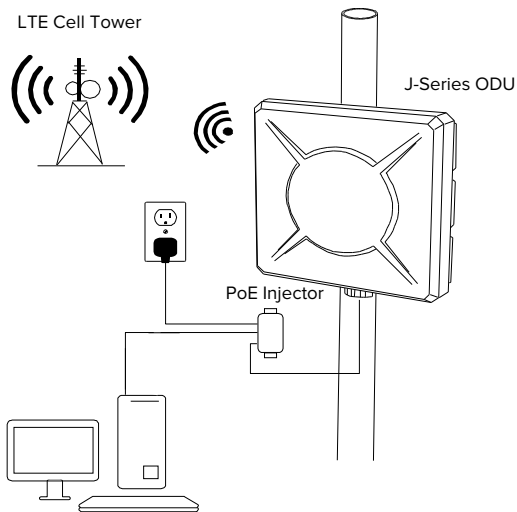


2. Place the mounting brackets over the U-shaped bracket. Position the ODU CPE at the desired angle and attach it with four screws.

Installation Completion

Once the installation is complete and the ODU CPE is connected to your Computer/PC using the PoE injector. You can now access data services on that Computer/PC. Make sure all LEDs are lit up on the ODU.

Your installation should resemble the images below.



Online Device Management Portal

You can access your ODU J-Series Online Portal to view device status, change your device settings, and perform manual software upgrades (for more details, kindly refer to the device's User Manual).

Open any web browser and then enter <http://192.168.0.1> in the URL address bar while connected to the J-Series ODU. Make sure you are connected directly with the PoE connection or with some network device, such as a WiFi router/switch.

The default login username & password is "admin".

The screenshot shows the login page of the ODU Online Portal. The page has a dark header with the word "Login" in white. Below the header, there are two input fields: "Username:" and "Password:". A link labeled "Forgot password?" is positioned below the password field. At the bottom of the form, there are two buttons: "Login" and "Clear".

Changing Your Online Portal Login Password

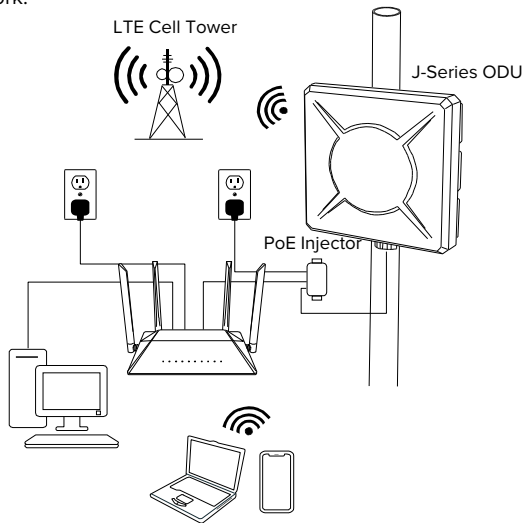
You can change the Online Portal login password by going to Settings > Basic > Management > UI Access Settings. Once changed, you must use the new password to login to the portal.

Optional Add-On's: Indoor WiFi AP

To bring LTE High Speed data connection to share with multiple devices over LAN or WiFi, simply connect the J-Series ODU with our indoor WiFi AP (built-in POE).

You can contact us to learn more about the ATEL Indoor WiFi AP on our website, <https://www.atel-usa.com/>.

If you are using other cables or devices that are compatible with our AOL-J ODU, please refer to their user manual to connect with our ODU for data services over the LTE Network.



Unable to Access Internet?

1. Check that all LEDs on ODU are lit up. If not, refer to table 1 and check each LED for current status.
2. Make sure your SIM card is active and internet on the 4G-LTE network is accessible/active.
3. Try resetting your ODU.
4. If an issue still exists, kindly contact to your data service provider.

Factory Resetting of Your J-Series ODU

You can reset your ODU to factory default from the Online Portal or the reset button.

Note: Resetting your ODU will erase all the changes you have done and boot up with factory default settings.

- A. To reset the device from the Online Portal, click Settings > Basic > Management. Click on "Restore" to

Factory Reset

Click button to restore default settings

Restore

- B. To reset the ODU from the reset button (refer figure 1), make sure your ODU is powered on. Insert a pin into the Reset pin hole, push down and hold for 3 seconds. The device will restore the factory defaults and reboot.



The ODU must have an uninterrupted power supply during Reset. Any power failure might result in a hardware failure.

Disclaimer:

Certain variations may be present between the device and user manual description depending on software release or specific network services. ATEL shall not be held legally responsible for such deviations, if any, nor for their potential consequences. Data plan may be required. Coverage subject to network availability.

Limited Warranty:

The full ATEL USA Warranty Policy can be found at www.atel-usa.com/warranty. On this page you can “Start a Warranty Claim”, “Check on an Existing Claim” and read our Warranty Policy by clicking on “ATEL’s Warranty Policy”. Please follow all warranty instructions available and if you have any questions contact us at support@atel-usa.com.

For More Information:



@AsiatelcoUSA



@atel-asiatelco



@ATEL USA



@ATEL_USA

Our Website: www.atel-usa.com
Contact us at: support@atel-usa.com

© 2022 Asiatelco Technologies, Inc. All Rights Reserved