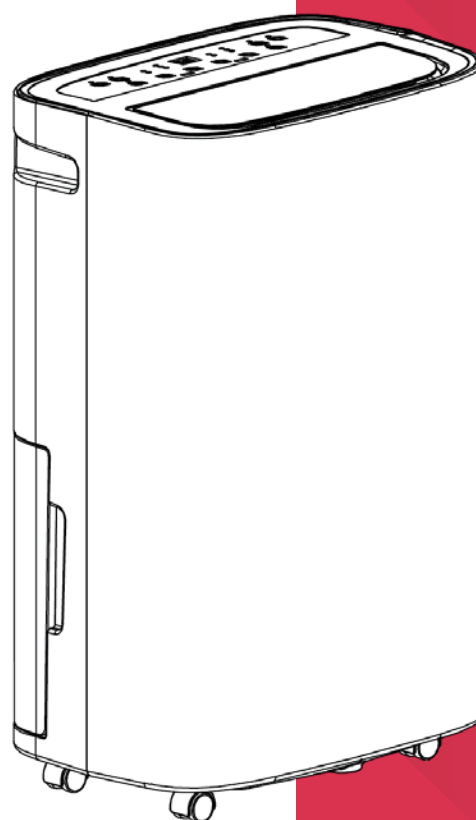




INSTRUCTION MANUAL



Glen Dimplex Connect App Instructions

Models: DC20DE

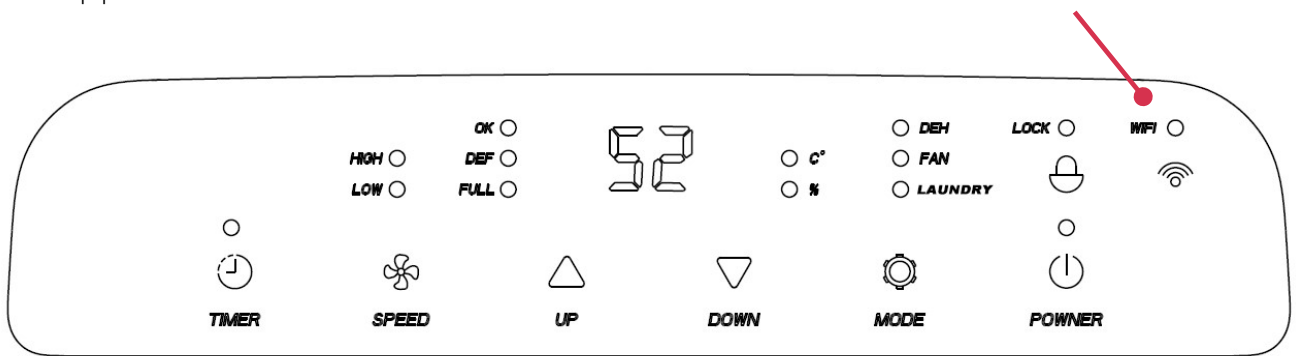
For domestic household use
only.

Pairing the Device

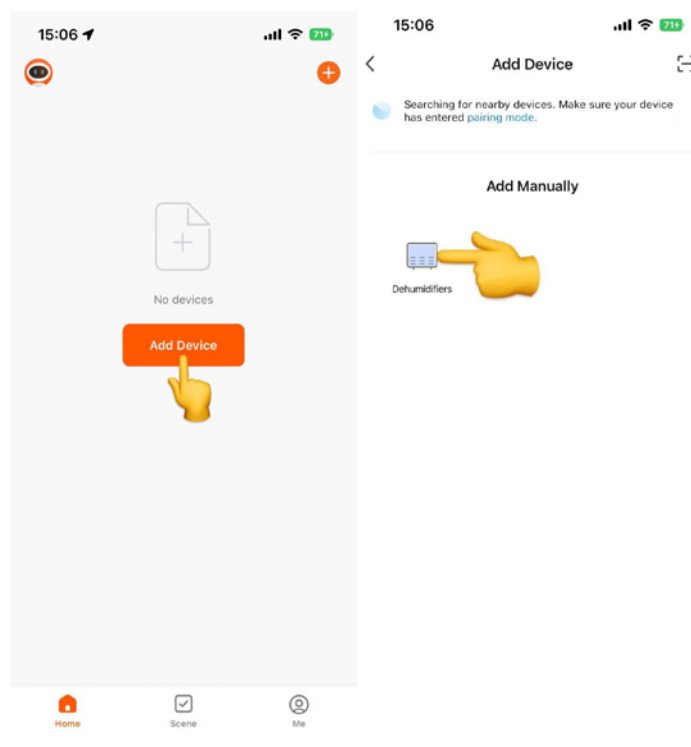
Connect the Device using EZ mode

Note: EZ mode acts as a broadcast system, which can be added to surrounding app devices into the state of the distribution network at one time.

1. Connect the dehumidifier to a power source
2. Ensure your Bluetooth and Wi-Fi signal is switched on and working on your mobile device.
3. Press and hold the **Wi-Fi** button on the dehumidifier for 5 seconds, until you hear a long 'beep' sound. Confirm the Wi-Fi indicator flashes quickly as per prompted on the app.



4. Open the Glen Dimplex Connect App.
5. Click 'Add Device.'
6. Click 'Dehumidifier,' to add manually. The app will also search for nearby devices, in which it can be added automatically.

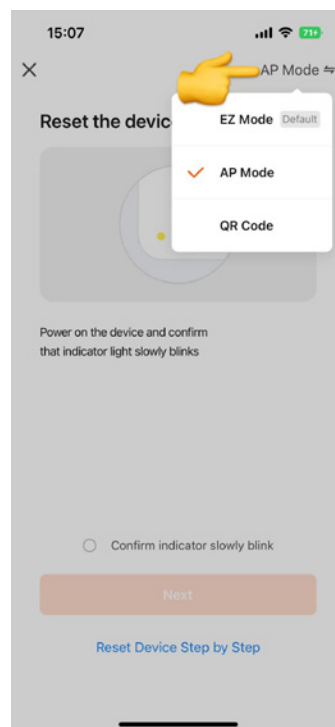


Pairing the Device

Connect the Device using AP mode

Note: AP mode is equivalent to establishing a one-to-one channel transmission.

1. Follow the exact same steps as pairing to EZ mode. After you click 'Add Dehumidifier,' go to the top right hand corner of the screen, and change to AP mode as per below. Ensure the Wi-Fi indicator flashes slowly as per prompted on the app.

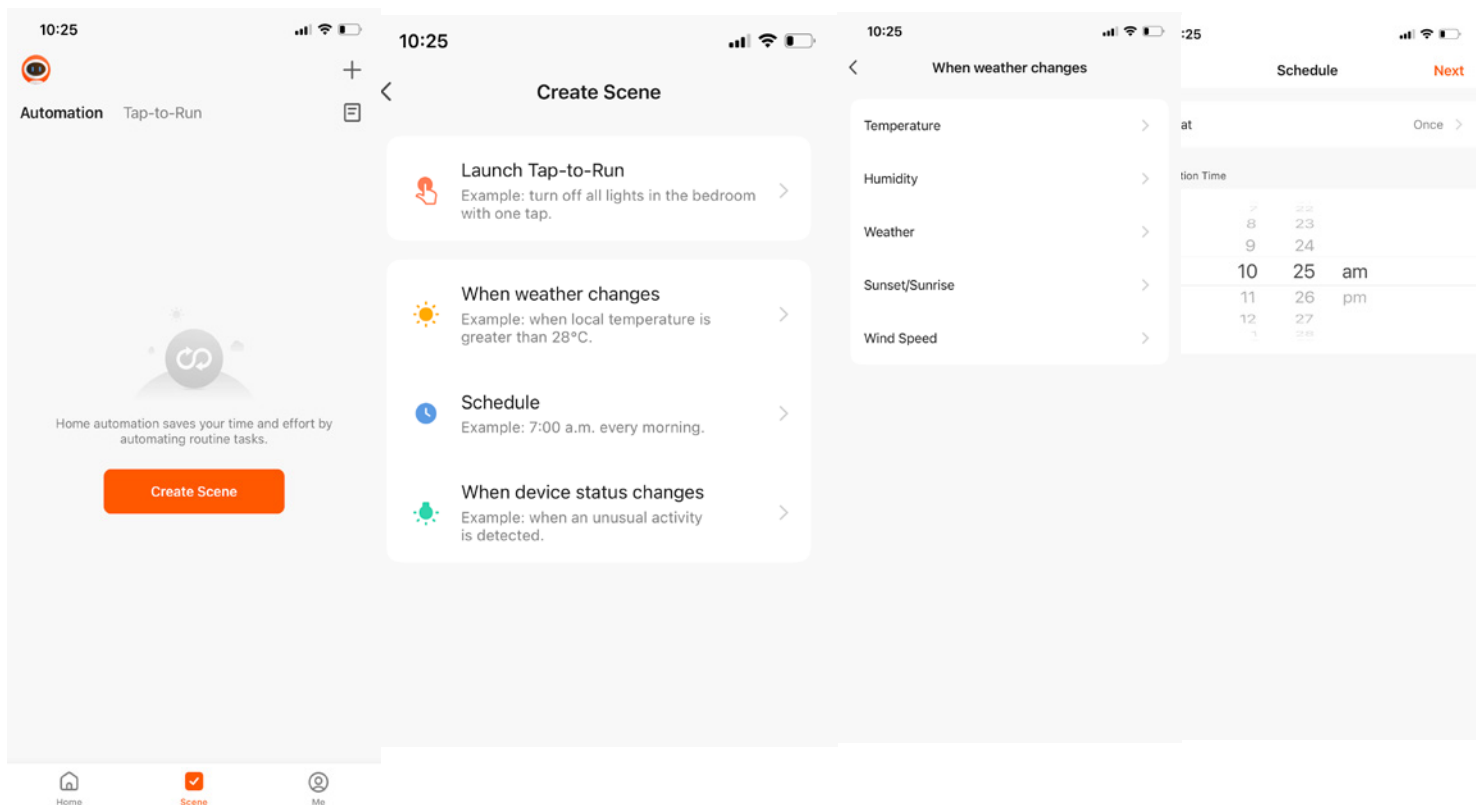


Using the app

Create a scene

Using the Glen Dimplex Connect App, you can create a scene in order to automate routine tasks.

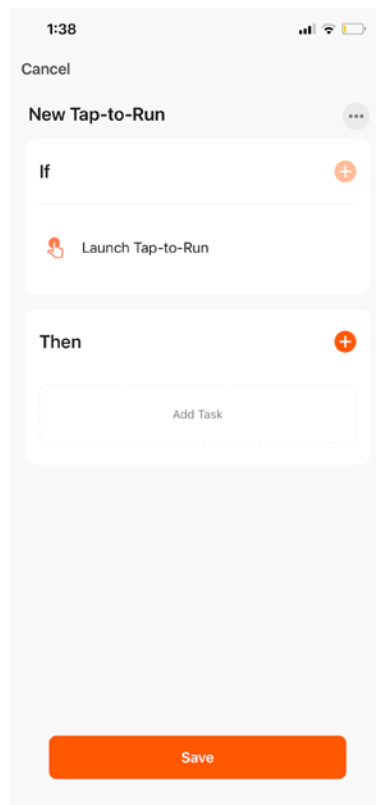
1. Click on '**Scene**' at the bottom of your screen.
2. Click on '**Create Scene**.'
3. Here you are provided with multiple options for your given scene. These options are '**When weather changes**,' '**Schedule**,' and '**When device status changes**.'
4. If you click '**When weather changes**,' this will bring up options such as '**Temperature**,' '**Humidity**,' '**Weather**,' '**Sunset/Sunrise**,' and '**Wind Speed**.' Click on your preferred option and follow the prompts on screen. For example, you can set it so when a certain temperature is hit, the device will switch on or a certain function will be activated.
5. If you click '**Schedule**,' this allows you to set a certain time as to when you want the device to start running. Follow the prompts on screen, and click '**Save**' when satisfied. You are able to set a one off time, or an on-going time, for example 7am every morning.
6. If you click '**When device status changes**,' this will allow you to select a certain status or function of the device, and choose an action in response. For example, if the device goes over a certain humidity level, you can have the fan turn on etc.



Using the app

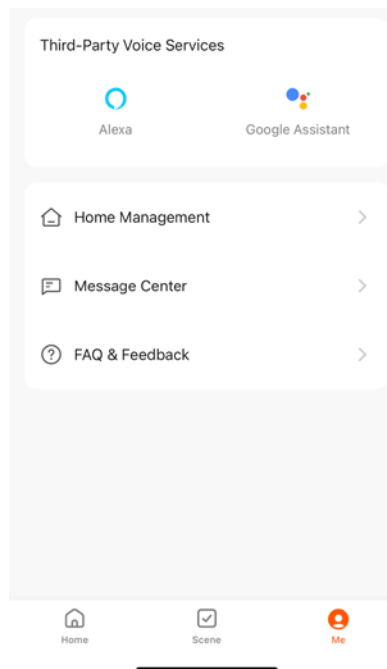
Tap-to-Run

Tap-to-Run mode can also be found in the '**Create Scene**,' section of the app. This allows you to create a task or scene, and then tap it once to begin running. Press '**Launch Tap-to-Run**,' and it will bring you to a page with an '**If**' and '**Then**' section. Press the '+' symbol on the '**Then**' section, and then select either '**Run the Device**,' '**Select smart scenes**,' or '**Delay the action**,' and follow the prompts on the app to create a Tap-to-Run button.



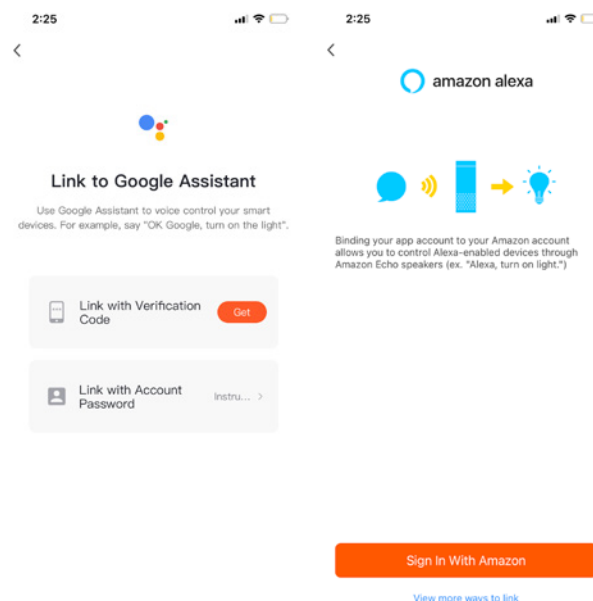
Other Functions

If you click on the 'Me' section on the bottom right of the page, it will take you to a page as per below.



Google Assistant & Alexa

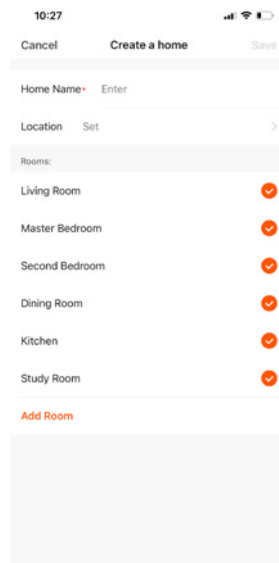
If you have a Google Assistant or Alexa device that you would like to connect through the Glen Dimplex Connect App/ your compatible devices, click on the respective button above to log into your account, and then follow the prompts on the app to work.



Other Functions

Home Management

In Home Management, you can create or join a home to help easily manage your rooms and devices. Click '**Home Management**,' and then '**Create a home**,' to add your home and features. To '**Join Home**,' you will need an invitation code from the owner of the home. This is useful if house sitting for someone and the owner wants you to maintain their appliances.

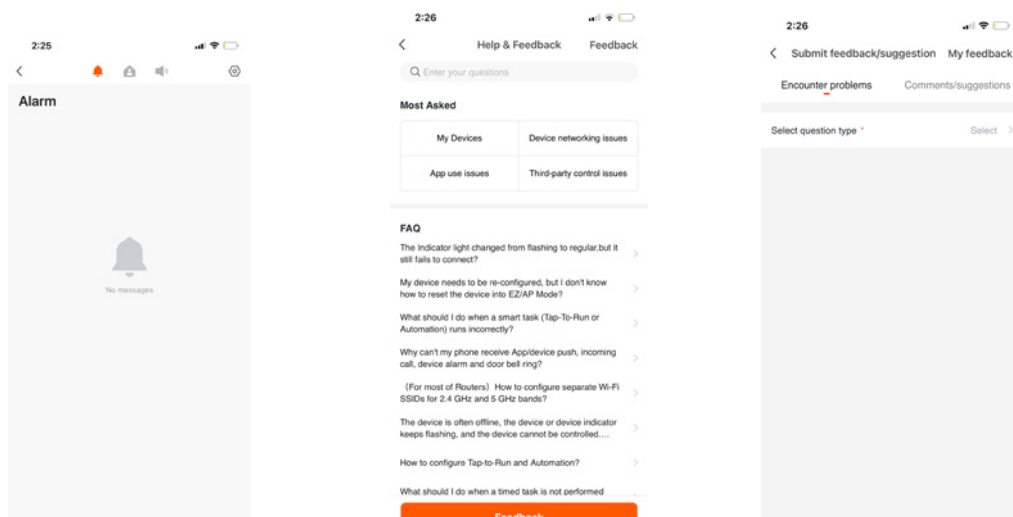


Message Centre

This is where you may receive any specific device alarms and system notification messages. The top panel of the page shows the sections, being '**Alarm**,' '**Home**,' and '**Bulletin**.'

FAQ & Feedback

Click here for a list of frequently asked questions, and if you have one of your own, click the 'Feedback,' button to create your own query.





Customer Care: 1300 556 816
customer care@glendimplex.com.au
www.dimplex.com.au

Supplied by Glen Dimplex Australia
1340 Ferntree Gully Road, Scoresby, Victoria, 3179

© Glen Dimplex Australia. All rights reserved. Material contained in this publication may not be reproduced in whole or in part, without prior permission in writing of Glen Dimplex Australia.