



Monster Soundstage S2 Rear Panel Connectors Replacement

Replace the rear panel connector boards in Monster Soundstage S2 speaker.

Written By: Shaw Hughes



INTRODUCTION

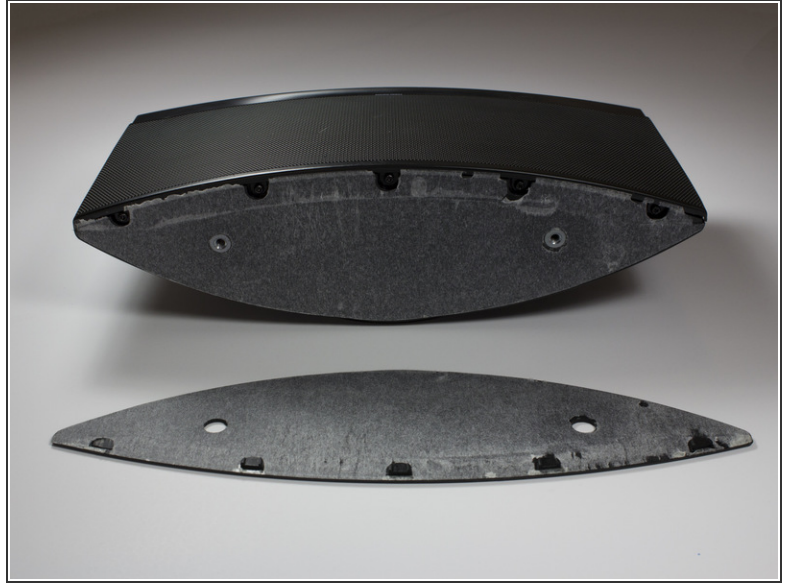
This guide will help you disconnect and replace the rear panel connectors of the speaker.



TOOLS:

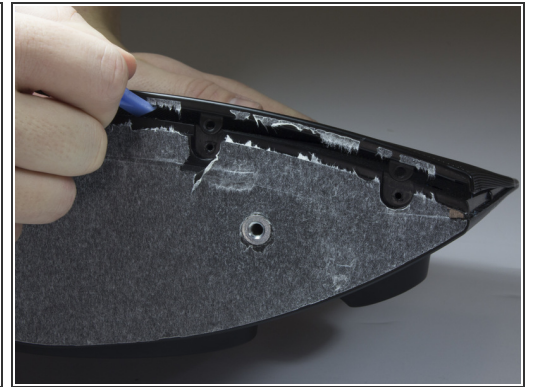
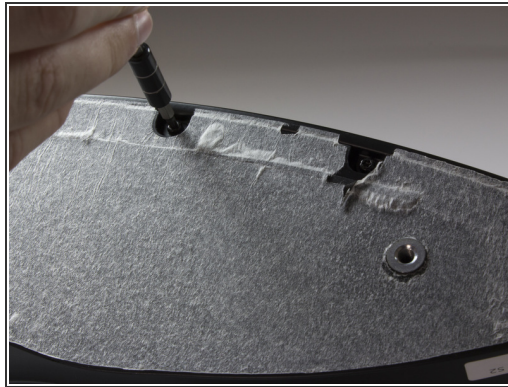
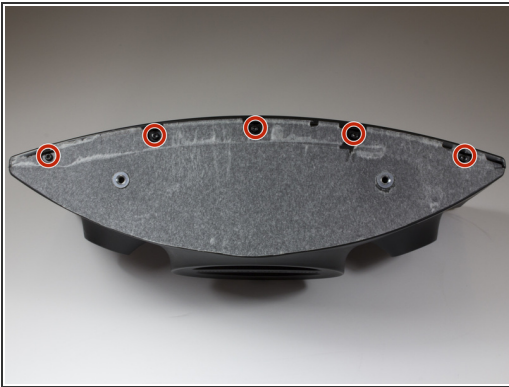
- [Spudger](#) (1)
 - [iFixit Opening Tools](#) (1)
 - [64 Bit Driver Kit](#) (1)
-

Step 1 — Speaker Grille



- Use a spudger or your fingers to pry off and remove the rubber pad on the bottom of the speaker.

Step 2



- Remove the five 10mm screws with a TR 10 screwdriver.
- Use a spudger to break the remaining adhesive holding the grille to the speaker body.

⚠ Be sure you don't bend the grille; it is not free from the speaker yet.

Step 3



- Flip speaker around and use a plastic opening tool to remove the top panel from the speaker.

Step 4



- Use a plastic opening tool to remove the foam and uncover four more screws.
- Use a TR 10 screwdriver to remove the five 10mm screws on the top of the speaker.

Step 5



- Carefully remove the top cover.

⚠ Be careful not to tear or stress the cable that provides power to the power LED.

Step 6




- Use a TR 10 screwdriver to remove two of the 10mm screws that secure the speaker grille.

⚠ Do not attempt to remove the grille just yet.

Step 7



- With the top panel removed, use a spudger to remove the display panel.

 The clips on the display panel are quite fragile. Pry up both edges of the display before attempting removal.

- Use a TR 10 screwdriver to remove the four final 10mm screws securing the speaker grille.

Step 8



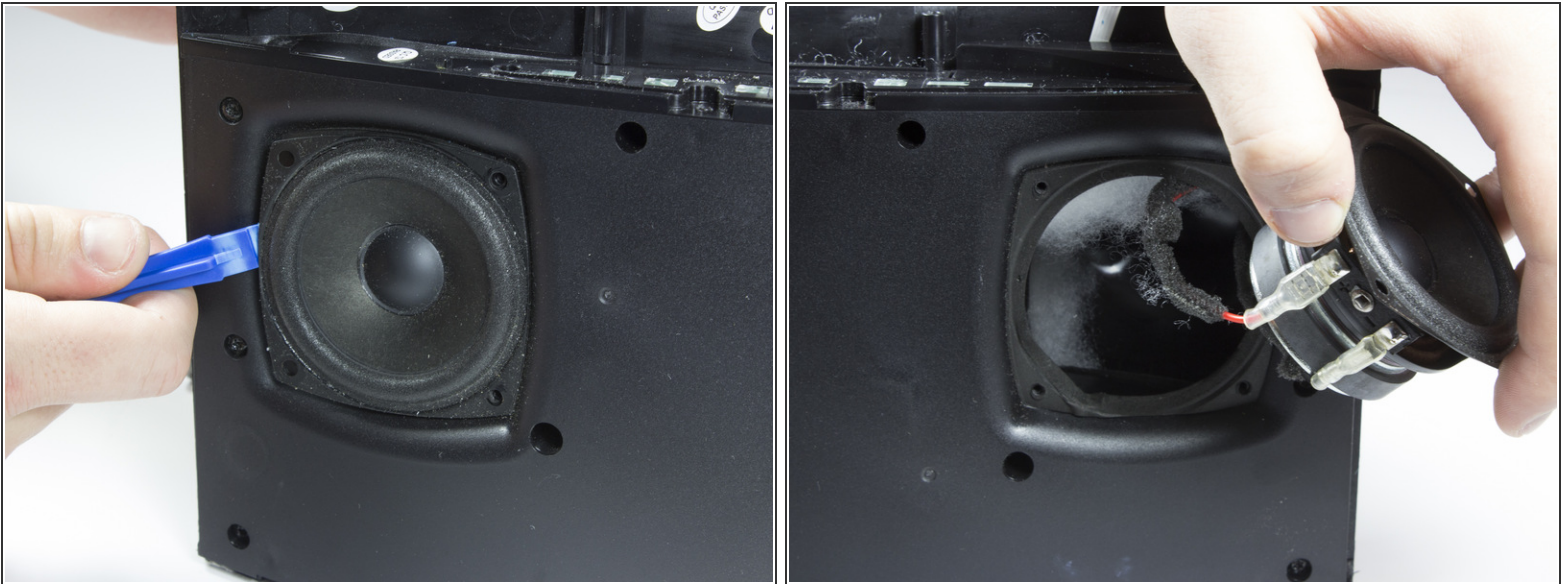
- Remove the front speaker grille.

Step 9 — Front Speakers



- After removing grille, you will see the speakers.
- Remove the eight 10mm screws that surround the speakers. There will be four around each speaker.

Step 10



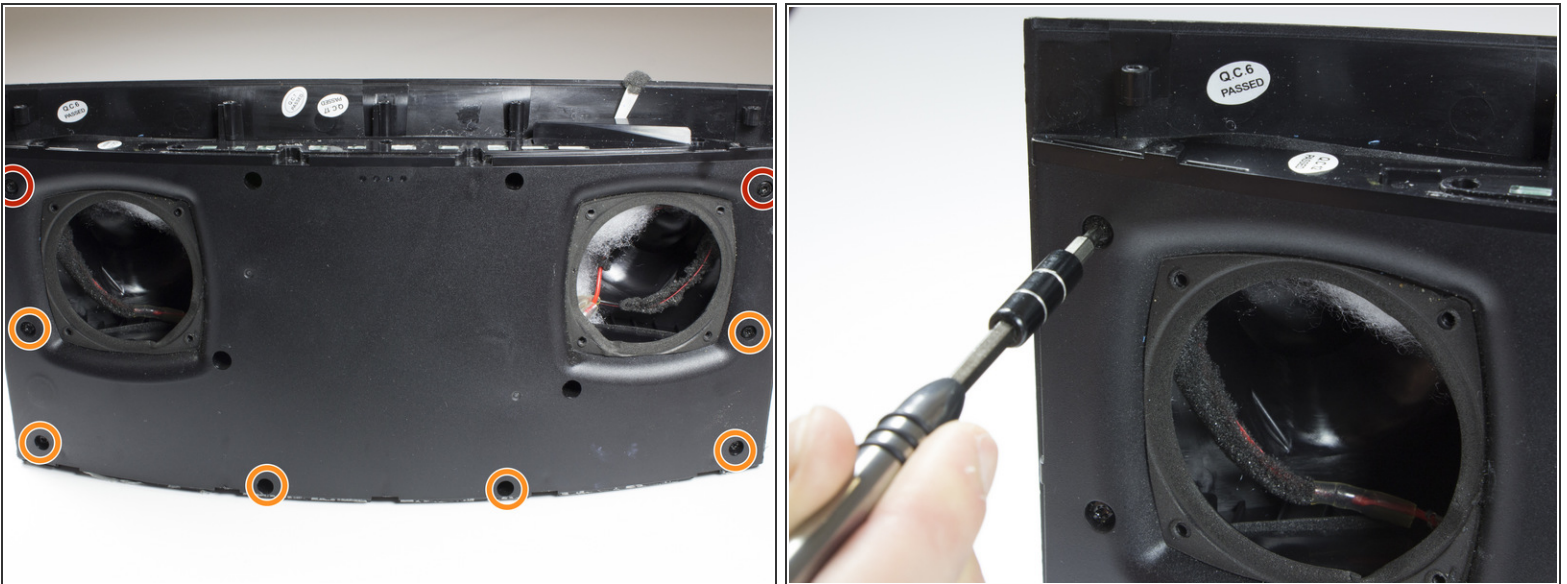
- Carefully lift each speaker from the housing. It may be necessary to break a light adhesive seal.
- ⚠ Be aware of the two wires that are connected to each speaker.
- Set each speaker beside the main housing.

Step 11



- Carefully but firmly unplug the two wires from each driver.
- The front speakers can now be removed.

Step 12 — Front Panel



- Identify the eight screws around the border of the front panel.
- Using the TR 10 driver, remove the two 8mm screws.
- Using the TR 10 driver, remove the six 12mm screws.

Step 13



- Use a 5 mm hex driver to extend the TR 10 driver. This allows the driver to access screws with deeper countersinks.

Step 14



- Identify the remaining four screws in the front panel.
- Use the extended driver from the previous step to remove the four 12mm TR 10 screws.

Step 15

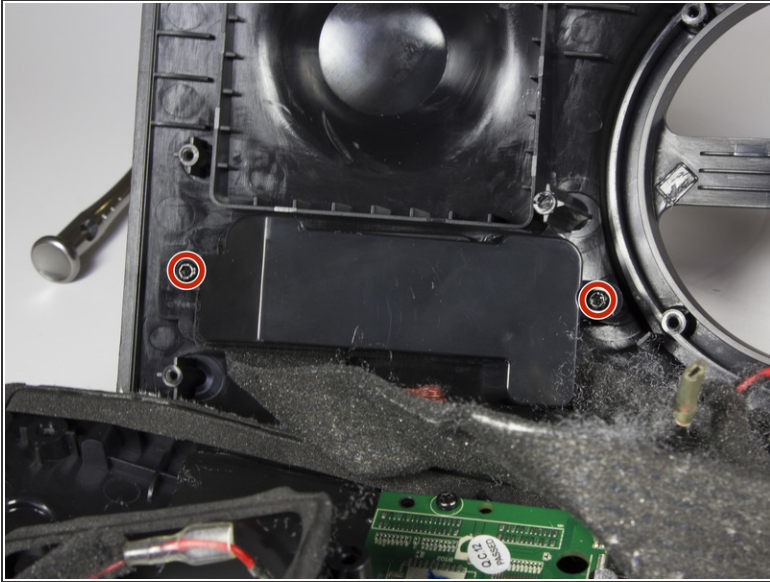


- Gently pull the front panel away from the back panel.

⚠ There are wires that connect the front and back panels. The two sides can be safely folded away from each other and laid flat on the table.

- Remove the white sound dampening material from the speaker. Note the location of the material and set aside.

Step 16 — Rear Panel Connectors




- Use a TR 10 driver to remove the two 10mm screws securing the connector housing.
- Remove the housing from the rear panel.

⚠ Do not stress or tear the cables that connect this part to the logic board.

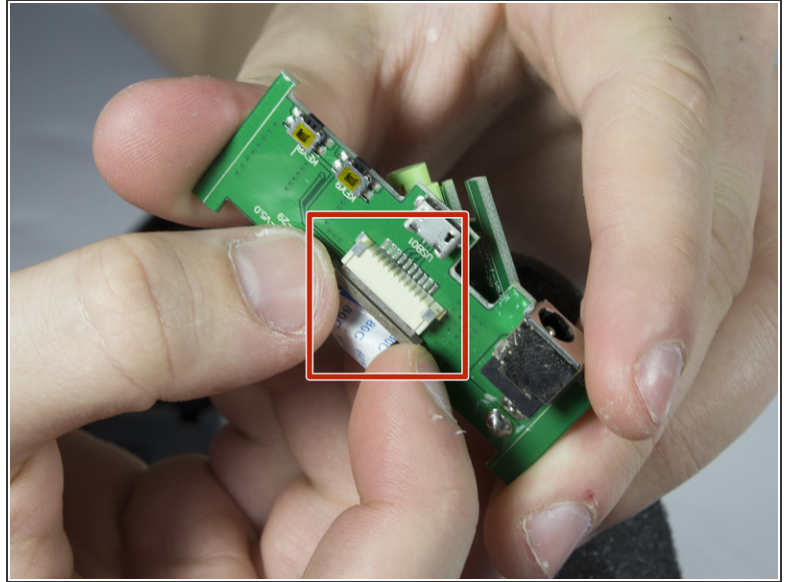
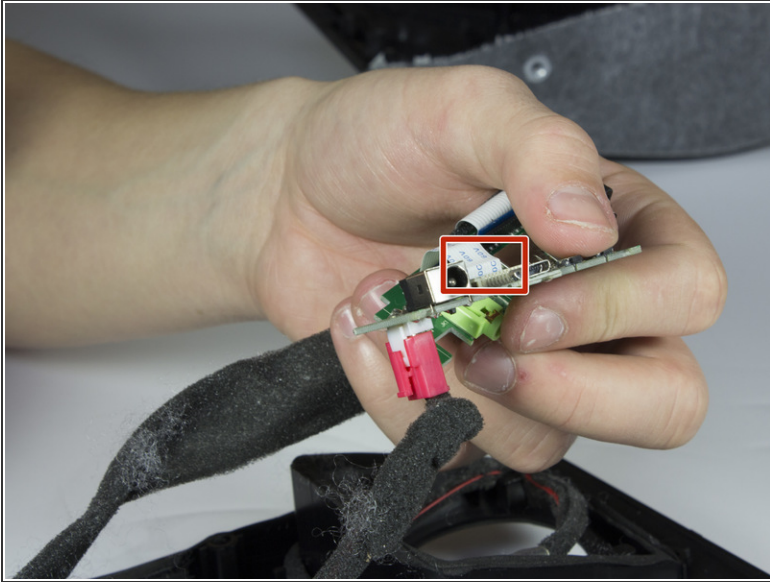
Step 17



- With the housing free from the speaker, the two daughterboards can be seen in the housing.
- Gently remove both boards from the housing.

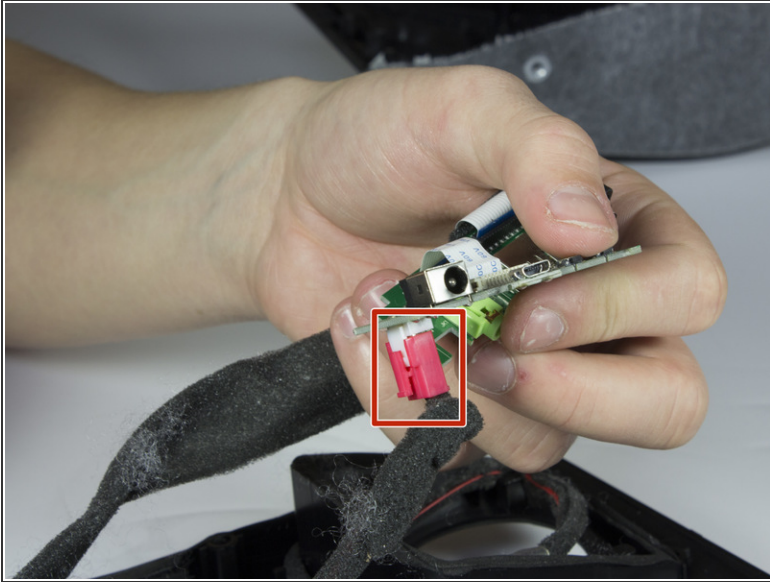
 Be aware of the fragile ribbon connector that runs between the boards, as well as the cords that run to the logic board.

Step 18



- Unplug the ribbon cable that connects the daughterboards from the top board. Leave the cable connected to the bottom board.
- ⓘ In order to remove the ribbon cable, gently pull the brown retention mechanism away from the connector. The ribbon cable can then be freely removed.

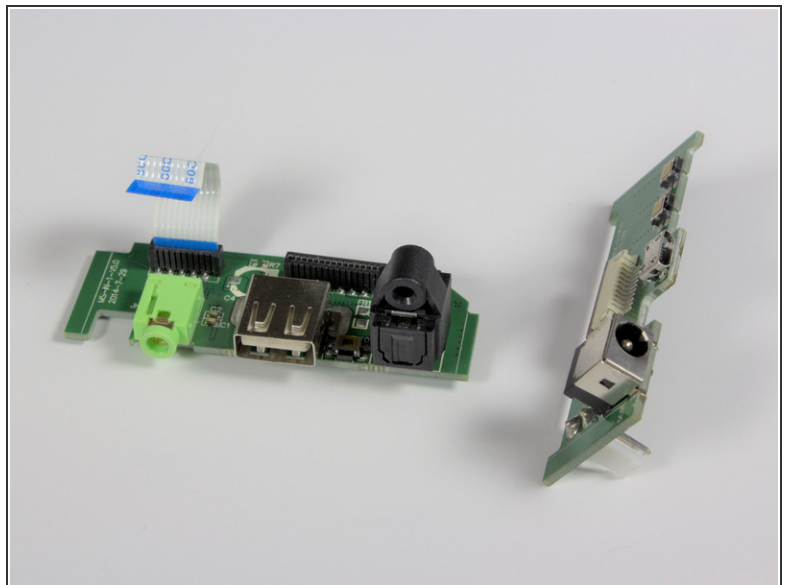
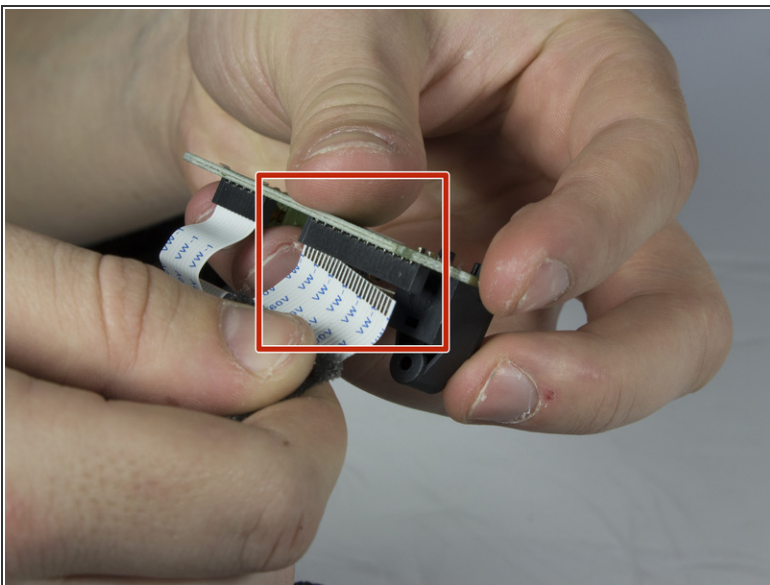
Step 19



- Gently unplug the red power connector from the top daughterboard.

☑ Note the correct orientation of this connector for reassembly.

Step 20



- Gently pull out the large ribbon cable from the bottom logic board. Grasp the cable as close to the connector as possible and pull it straight away from the board.

ⓘ There is no retention mechanism on this connector.

To reassemble your device, follow these instructions in reverse order.

This document was last generated on 2017-07-08 02:36:19 PM.