

PANZER

MAX

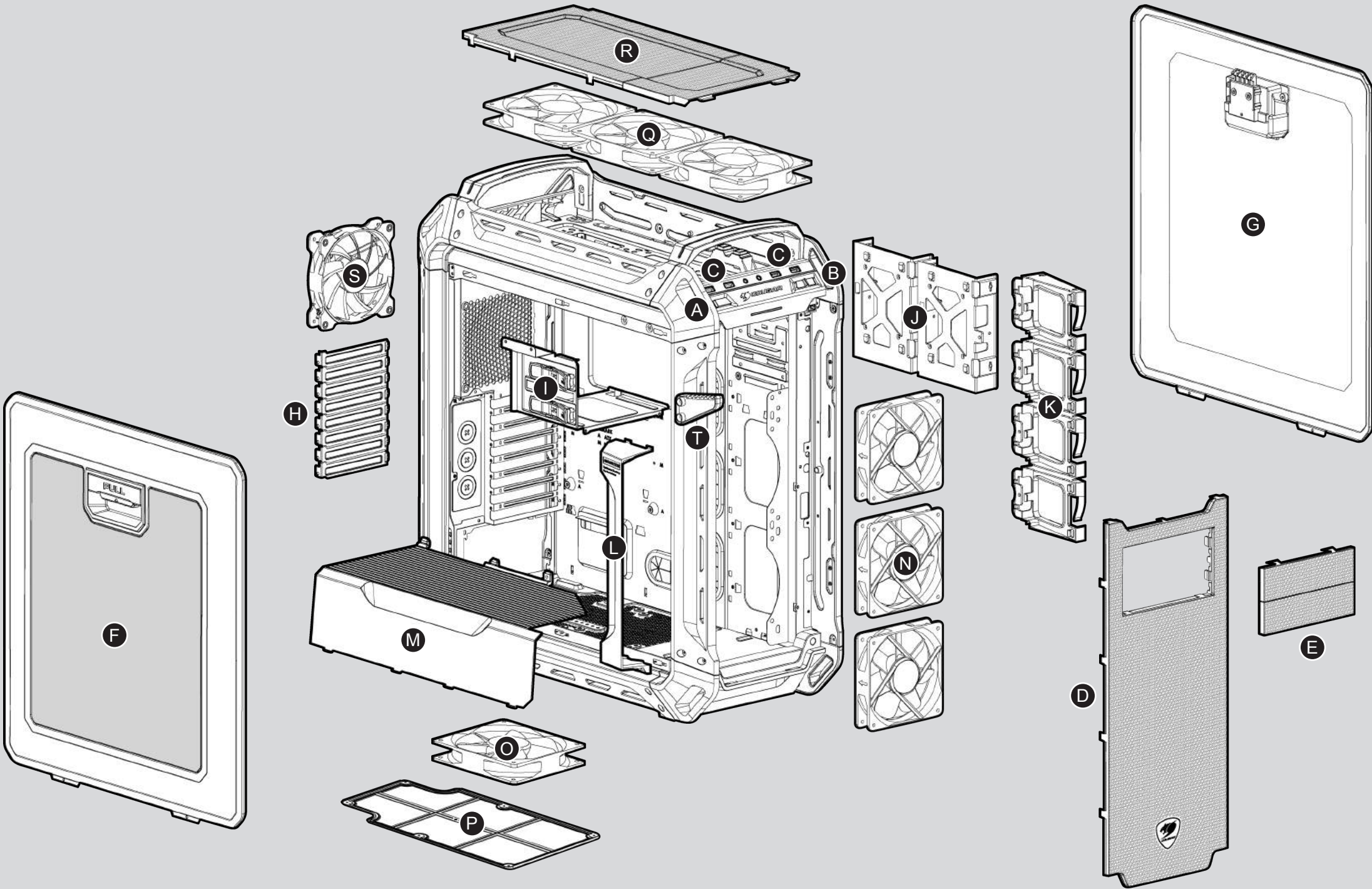
THE ULTIMATE COMPUTER CASE

COUGAR Facebook

Accessory Kit

1			Power Supply Screws	X 4
2			MBD/HDD screws	X 16
3			SSD screws	X 20
4			ODD screws	X 8
5			Short fan screws	X 16
6			Headphone hook screws	X 2
7			Shockproof rubber washers for top fans	X 4
8			Cable Ties	X 4
9			Water cooling orifices	X 3
10			Headphone hook	X 1
11			Fan connection splitter	X 2
12			Stand-off	X 2

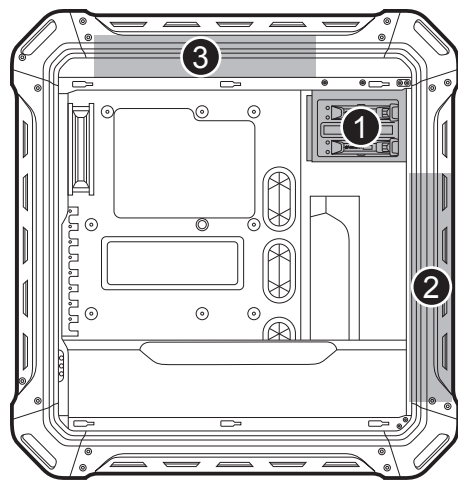
Assembly Drawing



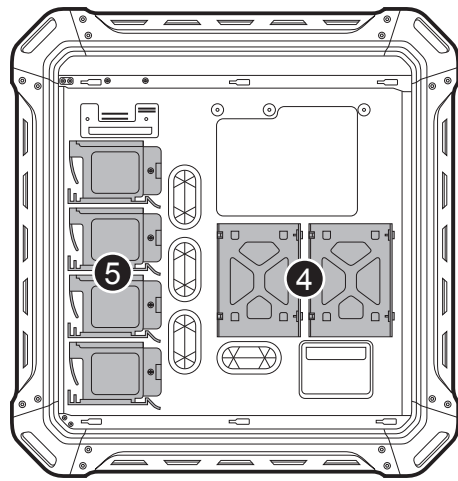
- A Power button / Reset button
- B Fan controller
- C USB 3.0 / USB 2.0 / HD audio ports
- D Removable front panel
- E Removable 5.25" cover
- F Left cover with transparent window
- G Right side cover

- H Vented slot cover
- I 5.25" device bays (tool-less)
- J 3.5" HDD trays (compatible with 2.5" HDD/SSD)
- K 2.5" HDD trays
- L Air Guide
- M Power supply cover
- N 3 x 140/120mm fans for front panel (2 x 120mm fans pre-installed, other fans are optional, to be purchased separately)

- O 1 x 140/120mm fan for bottom panel (optional, purchased separately)
- P Air filter on bottom cover to prevent dust from entering the power supply
- Q 2x140mm / 3 x 120mm fans for top panel (optional, purchased separately)
- R Top panel
- S 1 x 120mm fan for rear panel (pre-installed)
- T Headphone hook

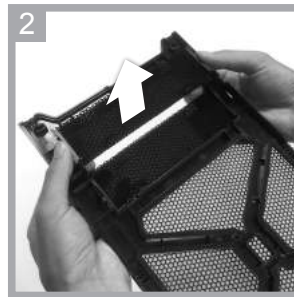


LEFT SIDE

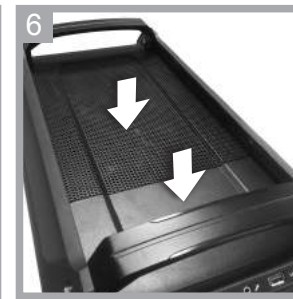
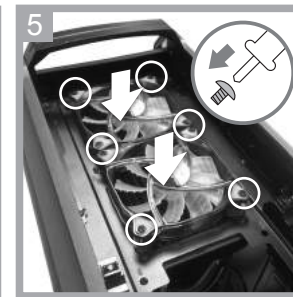
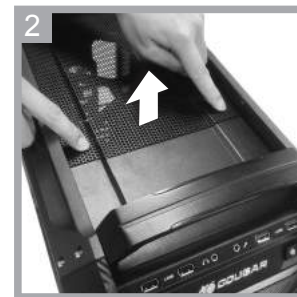
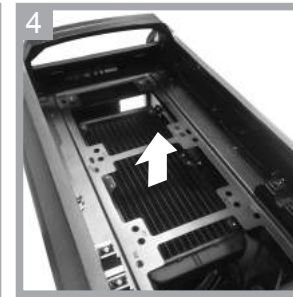


RIGHT SIDE

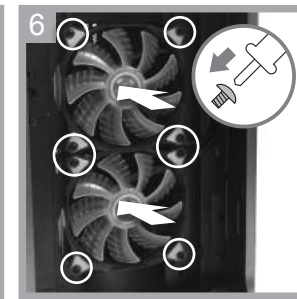
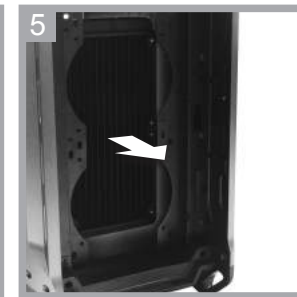
1 Removing the front cover and installing/removing 5.25" devices



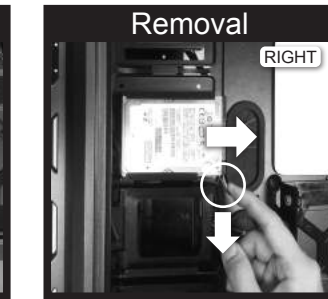
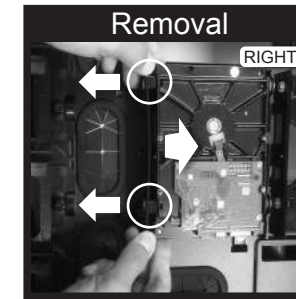
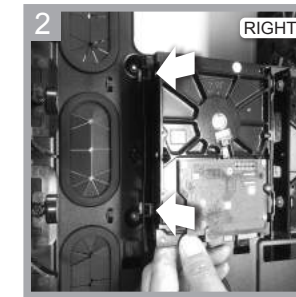
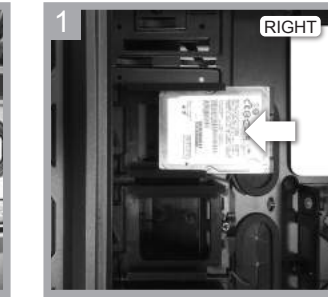
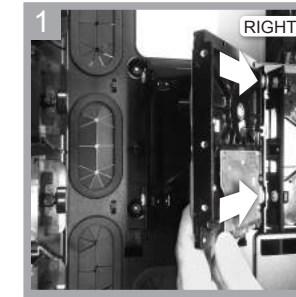
2 Removing a water cooler (top)



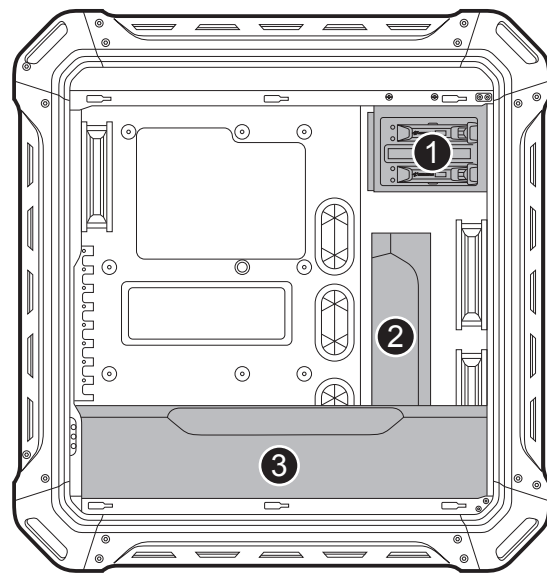
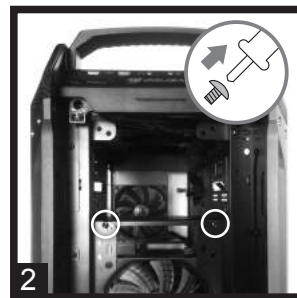
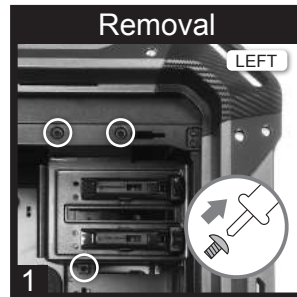
3 Removing a water cooler (front)



4 Installing an internal 3.5" HDD

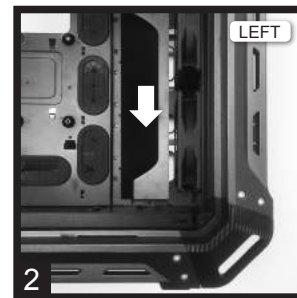
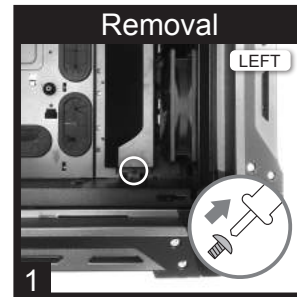


1 Removing the 2.5" device tray

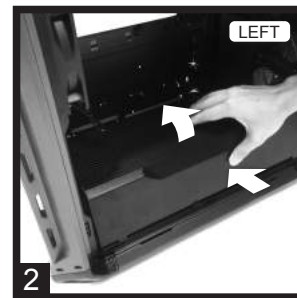
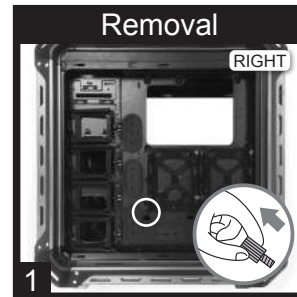


LEFT SIDE

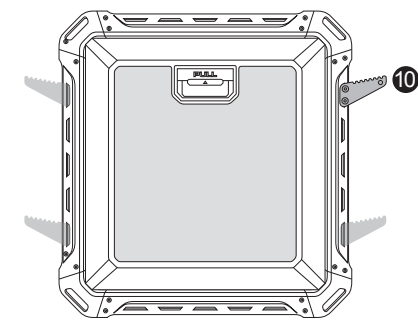
2 Removing the Air Guide



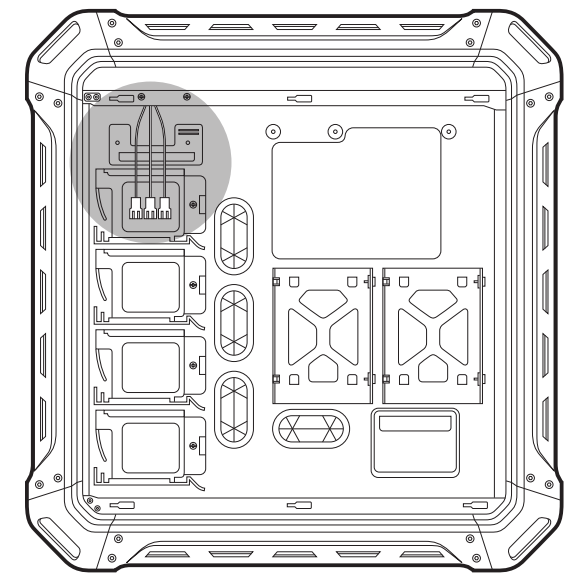
3 Installing/removing the power supply cover



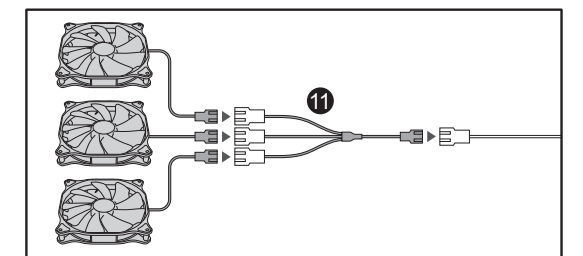
Removing the headphone hook



Through the use of splitters (2 included, 3 maximum), up to 8 fans can be connected



RIGHT SIDE



⚠ Fan cable max current loading is 1A