

Antenna test Report

K6/K7-US

SKYLIGHT ENGINEER DEPT			
APPROVAL BY	DRAWN BY	DATE	Version
Simon	Louis jiang	2023.8.1	V01

SKY LIGHT Electronic (Shen Zhen) Limited

Website: <http://www.skylight.com.hk> (TEL) 86-755-27511234

Content



1

Instrumentation Performance

2

Antenna Performance{K6/K7-us Antenna---WiFi }

3

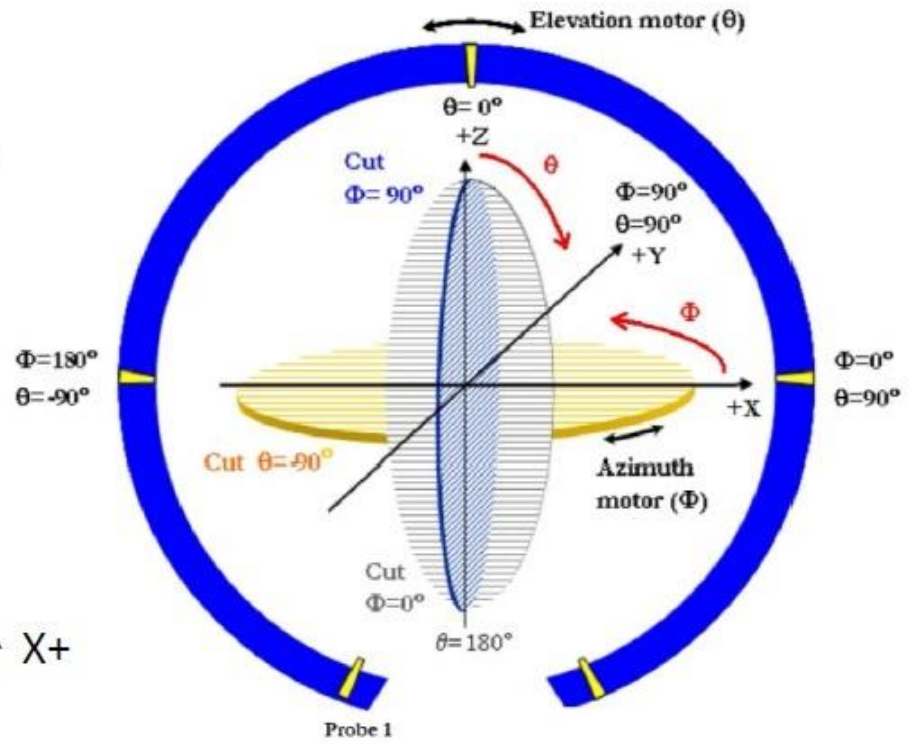
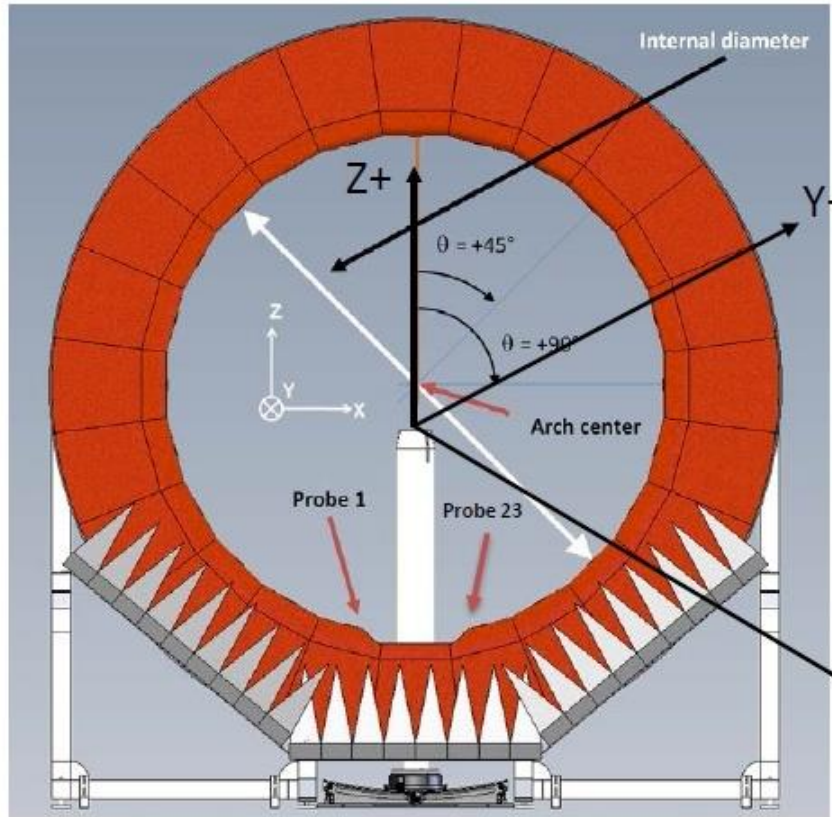
conclusion

Release notes



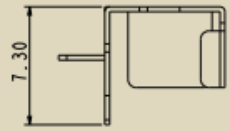
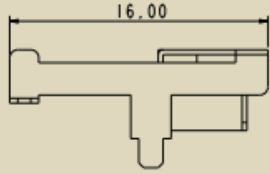
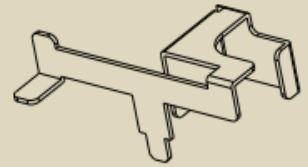
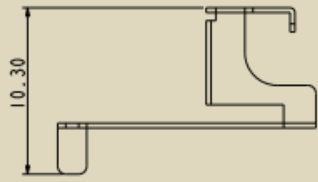
Version	Update History
V01	01) Antenna test for FCC.

Instrumentation Performance



Antenna in K6/K7-us

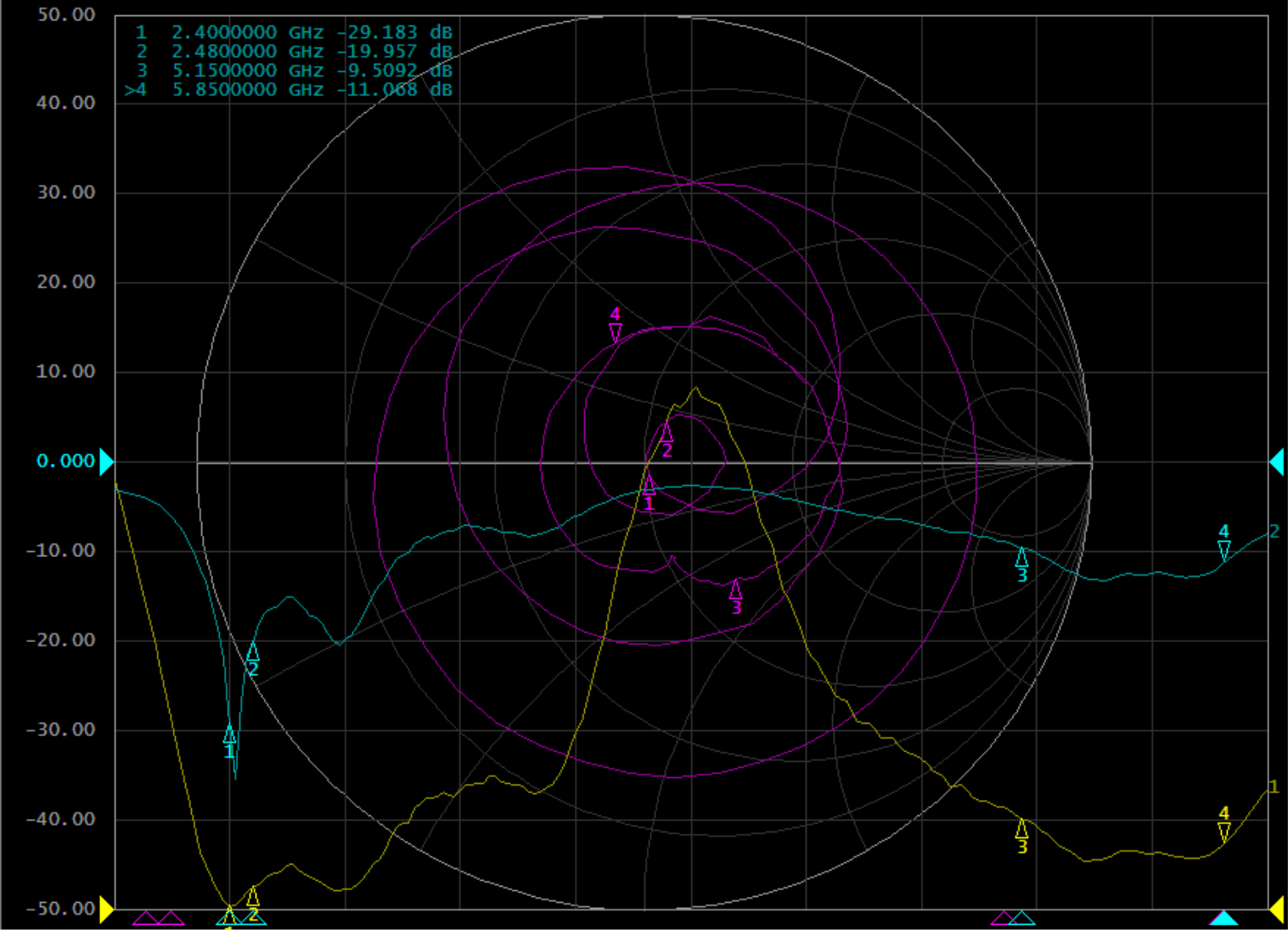
WiFi ant



Antenna specifications

1 Active Ch/Trace 2 Response 3 Stimulus 4 Mkr/Analysis 5 Instr State

Tr1 S11 SWR 1.000/ Ref 1.000 [F1 M]
 Tr2 S11 Log Mag 10.00dB/ Ref 0.000dB [F1 M]
 Tr3 S11 Smith (R+jX) Scale 1.000U [F1 M]



1 Start 2 GHz IFBW 70 kHz Stop 6 GHz Cor II

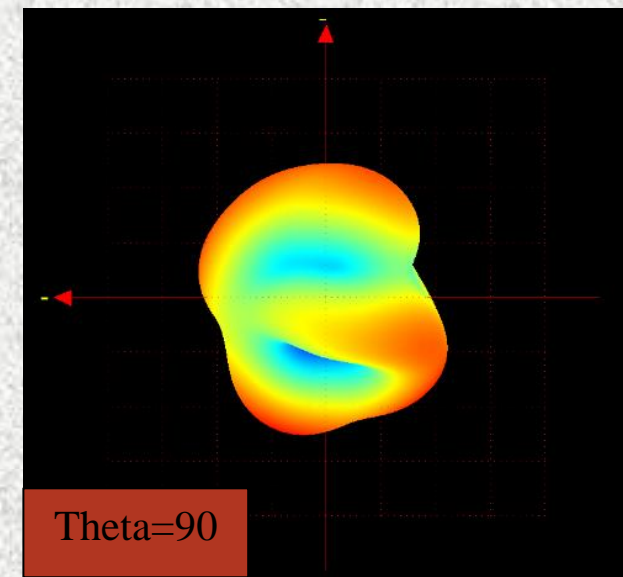
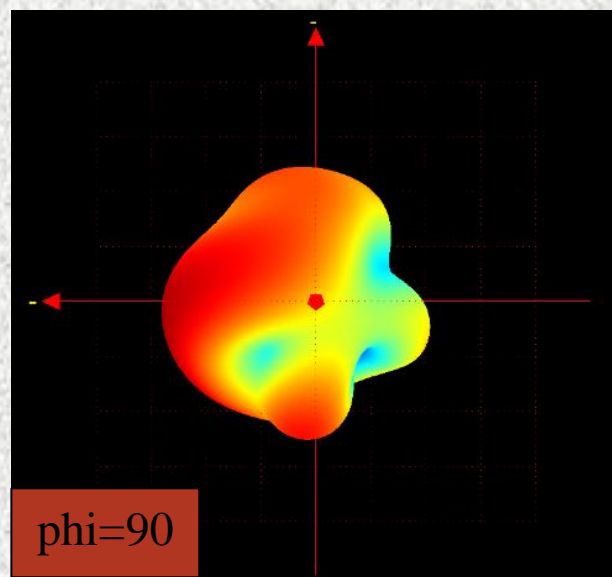
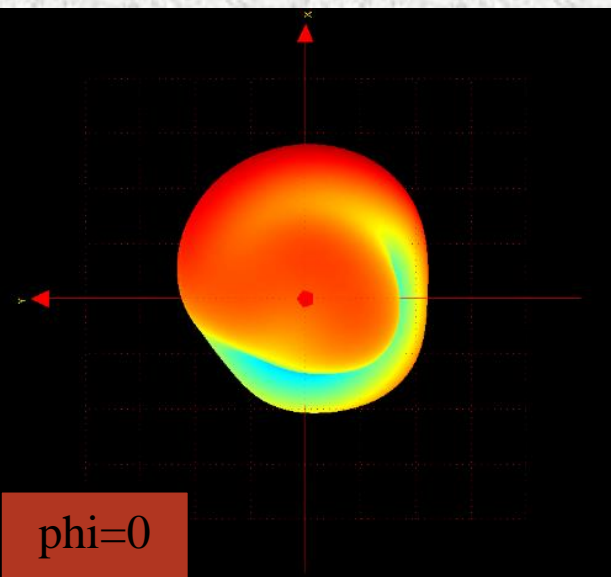
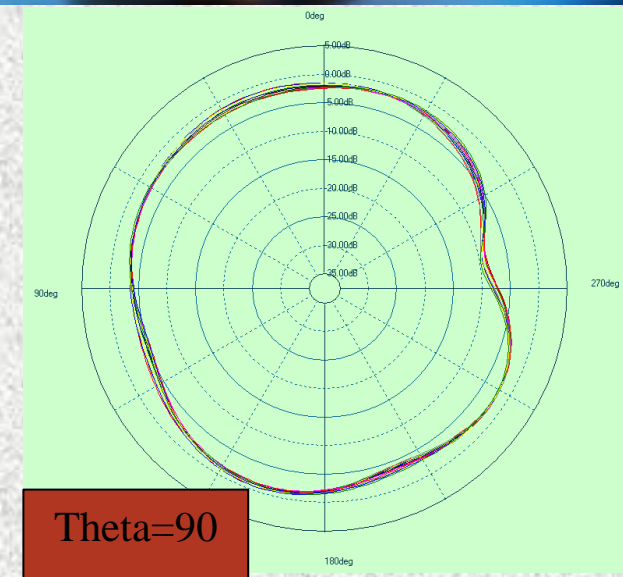
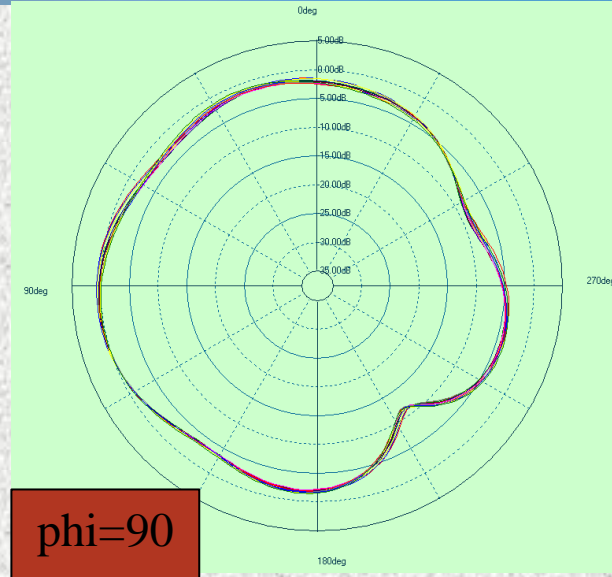
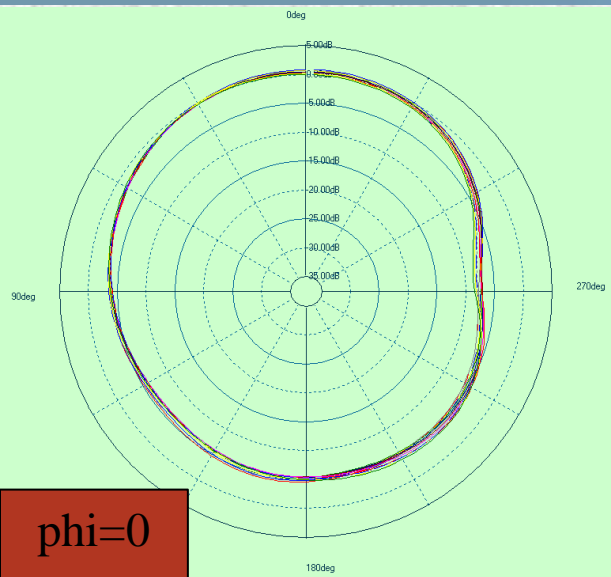
SPEC



ITEM	ANTENNA SPEC					
Model Name	K6/K7-us--WiFi					
Frequency & Gain	2400MHz	2450MHz	2500MHz	5150MHz	5500MHz	5850MHz
	1.04	1.12	1.15	1.39	1.74	1.82
Peak Gain(dBi)	2.4G=1.15 / 5G=1.82					
Average Gain(dB)	2.4G=1.10 / 5G= 1.65					
Impedance	50 Ω					
Antenna Size	16*10.3*7.3 (mm)					
Manufacture	Sky Light Electronic (ShenZhen) Limited					
Add	No. 8 & 9 Building, Antuoshan High-tech Industrial Park, Xinsha Road, Shajing, Bao'An, Shenzhen, Guangdong, China					
VSWR	< 2.0					
Return Loss(dB)	<-10					
Antenna type	Iron antenna				7/10	

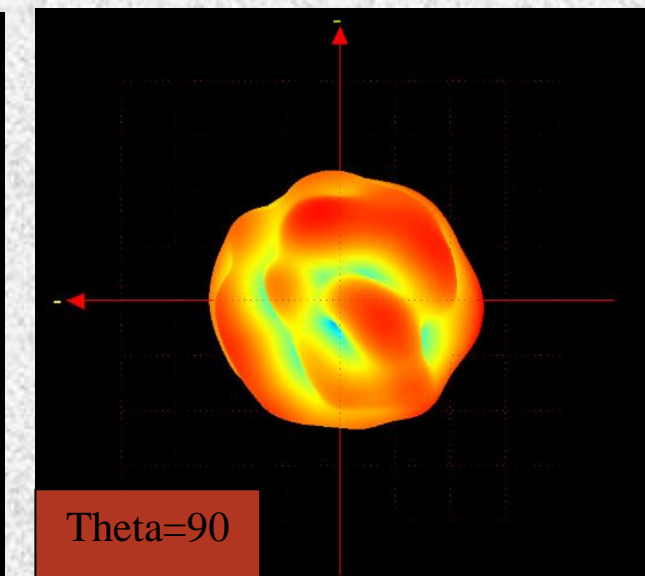
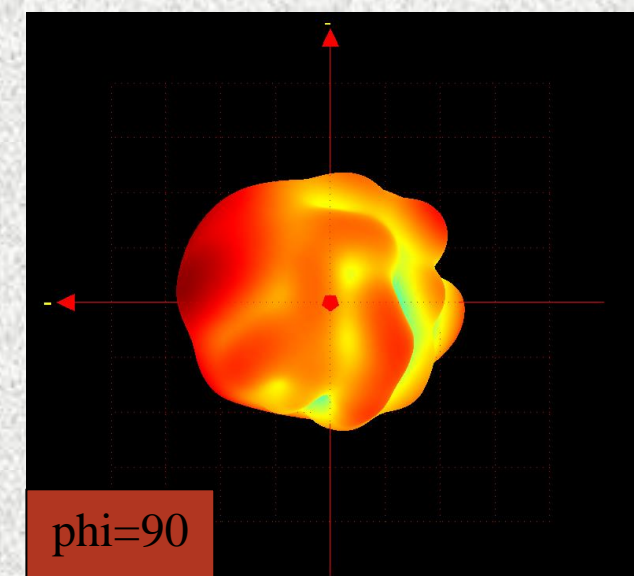
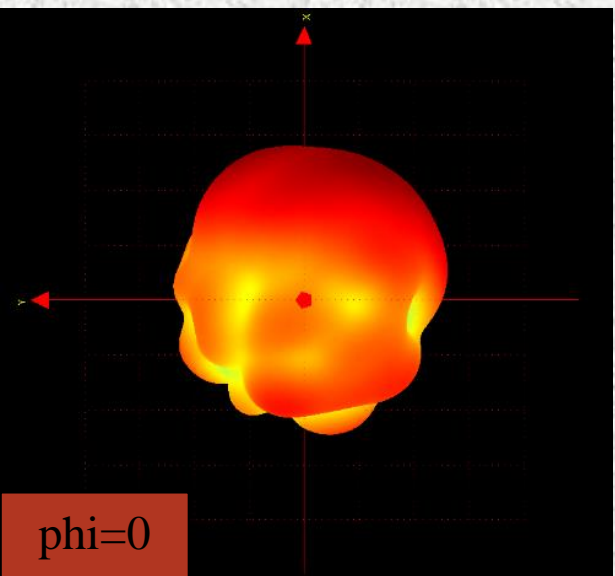
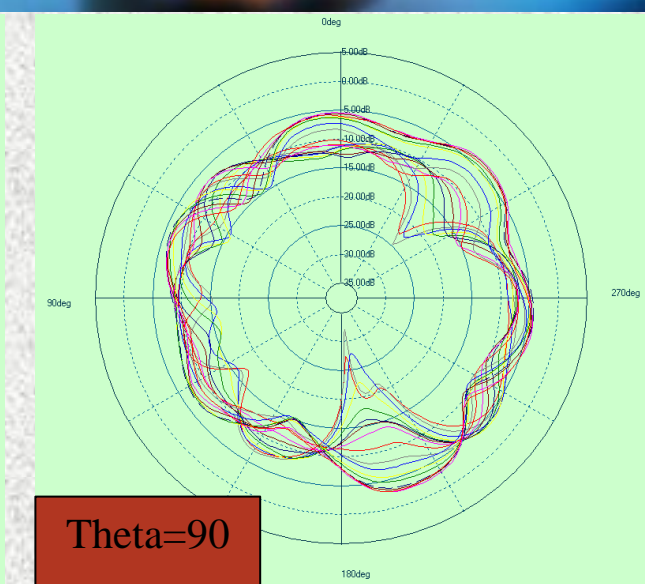
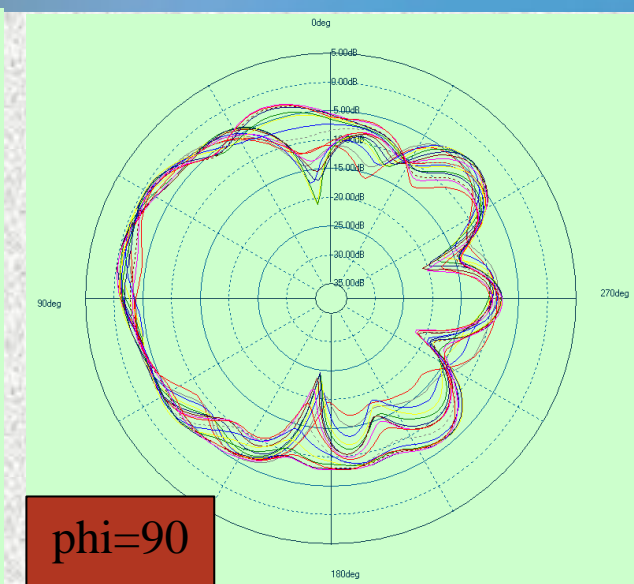
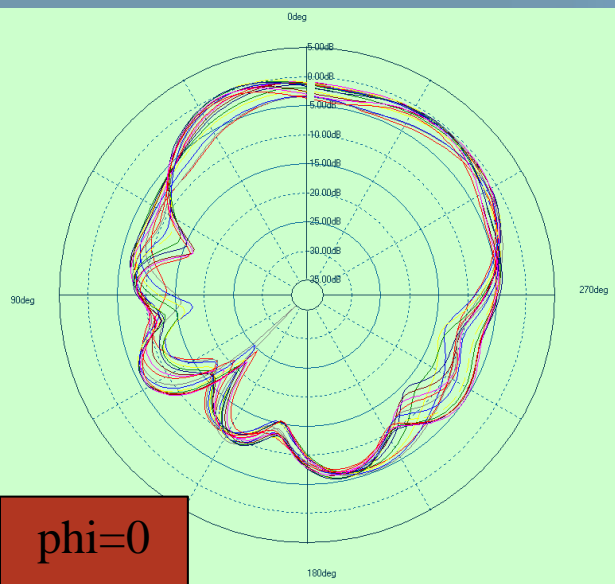
Performance of WiFi 2.4G

2D&3D sectional view



Performance of WiFi 5G

2D&3D sectional view



Thank You !

www.sky-light.com.hk

SKY LIGHT Electronic (Shen Zhen) Limited Version: 1.0

Website: <http://www.skylight.com.hk> (TEL) 86-755-27511234