



Product End-of-Life Disassembly Instructions

Product Category: Notebooks and Tablet PCs

Marketing Name / Model

[List multiple models if applicable.]

HP EliteBook 725 G4 Notebook PC

Purpose: The document is intended for use by end-of-life recyclers or treatment facilities. It provides the basic instructions for the disassembly of HP products to remove components and materials requiring selective treatment, as defined by EU directive 2002/96/EC, Waste Electrical and Electronic Equipment (WEEE).

1.0 Items Requiring Selective Treatment

1.1 Items listed below are classified as requiring selective treatment.

1.2 Enter the quantity of items contained within the product which require selective treatment in the right column, as applicable.

Item Description	Notes	Quantity of items included in product
Printed Circuit Boards (PCB) or Printed Circuit Assemblies (PCA)	With a surface greater than 10 sq cm	6
Batteries	All types including standard alkaline and lithium coin or button style batteries	2
Mercury-containing components	For example, mercury in lamps, display backlights, scanner lamps, switches, batteries	0
Liquid Crystal Displays (LCD) with a surface greater than 100 sq cm	Includes background illuminated displays with gas discharge lamps	1
Cathode Ray Tubes (CRT)		0
Capacitors / condensers (Containing PCB/PCT)		0
Electrolytic Capacitors / Condensers measuring greater than 2.5 cm in diameter or height		0
External electrical cables and cords		0
Gas Discharge Lamps		0
Plastics containing Brominated Flame Retardants weighing > 25 grams (not including PCBs or PCAs already listed as a separate item above)		0
Components and parts containing toner and ink, including liquids, semi-liquids (gel/paste) and toner	Include the cartridges, print heads, tubes, vent chambers, and service stations.	0
Components and waste containing asbestos		0
Components, parts and materials containing		0

refractory ceramic fibers		
Components, parts and materials containing radioactive substances		0

2.0 Tools Required

List the type and size of the tools that would typically be used to disassemble the product to a point where components and materials requiring selective treatment can be removed.

Tool Description	Tool Size (if applicable)
Screwdriver #1	Electric cross screw driver #0
Screwdriver#2	Electric cross screw driver #1
Description #3	
Description #4	
Description #5	

3.0 Product Disassembly Process

3.1 List the basic steps that should typically be followed to remove components and materials requiring selective treatment:

1. Follow steps described in Disassembly instruction (file attached)
2. If parts can be removed without using a tool, remove it first
3. Use correct screwdriver and torque value before unlock the screw.
- 4.
- 5.
- 6.
- 7.
- 8.
- 9.

3.2 Optional Graphic. If the disassembly process is complex, insert a graphic illustration below to identify the items contained in the product that require selective treatment (with descriptions and arrows identifying locations).

MANUFACTURING PROCESS INSTRUCTIONS
MECHANICAL ASSEMBLY

MODEL : Stallone/Ledger

Sub-assembly name:	FA DIS ASS'Y		
Document No.:	Stallone/Ledger FA DIS ASS'Y SOP		
Written by:	Vick Weng	Revision:	0.1
Date:	2016/10/24	Page:	1

A. Current station version list

Station	Ver.	Station	Ver.	Station	Ver.	Station	Ver.
1	0.1	10	0.1				
2	0.1	11	0.1				
3	0.1	12	0.1				
4	0.1	13	0.1				
5	0.1						
6	0.1						
7	0.1						
8	0.1						
9	0.1						

B. Version Modify list

Revision	Date	Station	Content	Ver.	Design
0.1	2016/10/24	ALL	FIRST VERSION	0.1	Vick Weng



Standard Operation Procedure

Document No. : Stallone/Ledger FA DIS ASS'Y SOP Station : 1(1/1)
Name : Disassemble Dummy SD Card/Rubber Ver. : 0.1 Date : 2016/10/24

Step :

- 1. Disassemble dummy SD card.(Fig.1)
- 2. Disassemble rubber*11.(Fig.2)



Fig.1



Fig.2

Notes : If finding anything uncommon, notice foreman or assistant at once.

Holding fixture list (holding fixture standard)	Qty	Holding fixture list (holding fixture standard)	Qty



Standard Operation Procedure

Document No. : Stallone/Ledger FA DIS ASS'Y SOP

Station : 2(1/1)

Name : Disassemble Bottom Case

Ver. : 0.1

Date : 2016/10/24

- Step :
1. Loosen screw *12, then disassemble bottom case.(Fig.1)

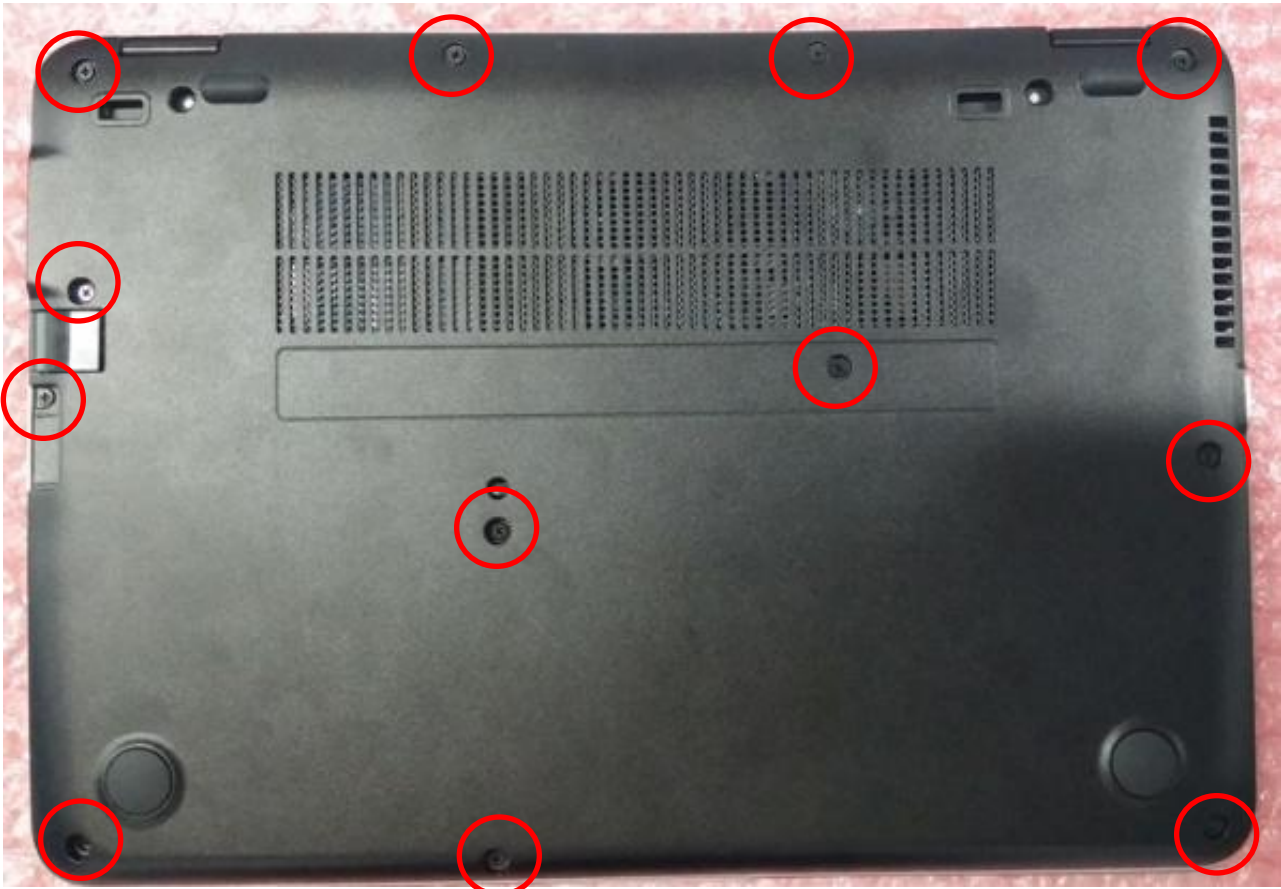


Fig.1

Notes : If finding anything uncommon, notice foreman or assistant at once.

Holding fixture list (holding fixture standard)	Qty	Holding fixture list (holding fixture standard)	Qty
Electric cross screwdriver (#1)	1		



Standard Operation Procedure

Document No. : Stallone/Ledger FA DIS ASS'Y SOP Station : 3(1/1)
Name : Remove Battery Ver. : 0.1 Date : 2016/10/24

- Step :
- 1. Loosen screw *1. (Fig.1)
 - 2. Pull up the pulling strip to take out the battery. (Fig.1)

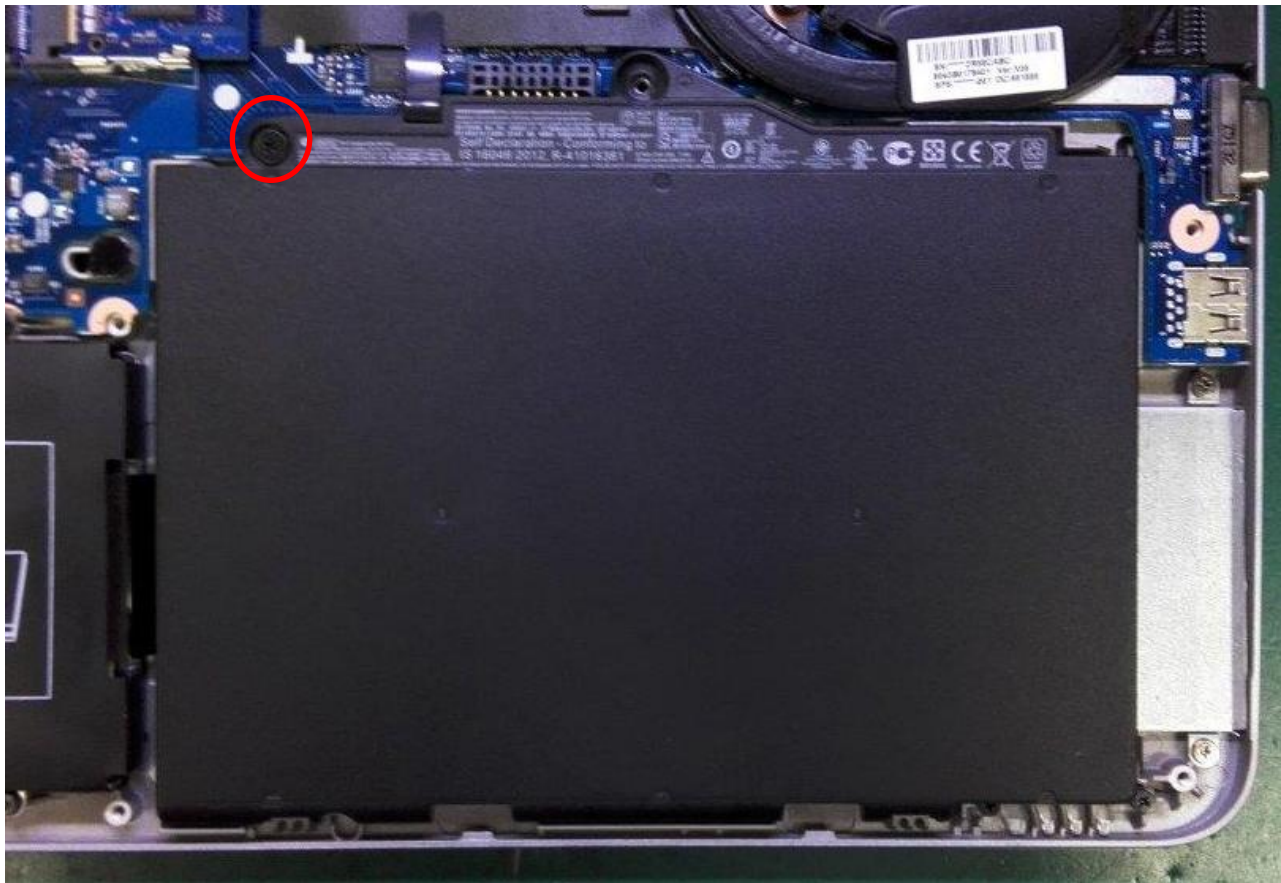


Fig.1

Notes : If finding anything uncommon, notice foreman or assistant at once.

Holding fixture list (holding fixture standard)	Qty	Holding fixture list (holding fixture standard)	Qty
Electric cross screwdriver (#1)	1		



Standard Operation Procedure

Document No. : Stallone/Ledger FA DIS ASS'Y SOP

Station : 4(1/2)

Name : Disassemble HDD or SSD

Ver. : 0.1

Date : 2016/10/24

Step :

For HDD SKU:
1. Loosen HDD bracket screw*4, then remove HDD.(Fig.1)

For SSD SKU:
2. Loosen screw*1, then disassemble SSD.(Fig.2)

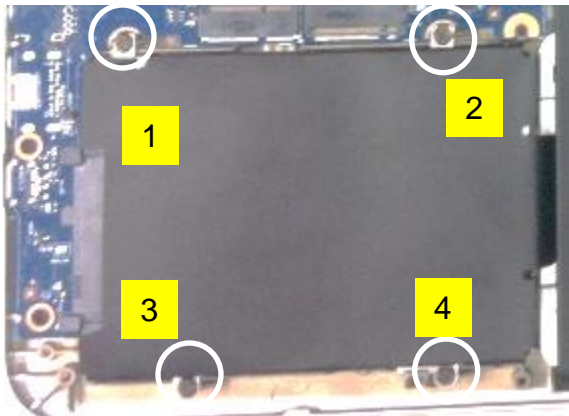


Fig.1



Fig.2

Notes : If finding anything uncommon, notice foreman or assistant at once.

Holding fixture list (holding fixture standard)	Qty	Holding fixture list (holding fixture standard)	Qty
Electric cross screwdriver (#1)	1		



Standard Operation Procedure

Document No. : Stallone/Ledger FA DIS ASS'Y SOP

Station : 4(2/2)

Name : Disassemble HDD Bracket & HDD

Ver. : 0.1

Date : 2016/10/24

Step :

For HDD SKU:

1. Loosen HDD bracket screw*4, then remove HDD from HDD bracket.(Fig.1/Fig.2)



Fig.1

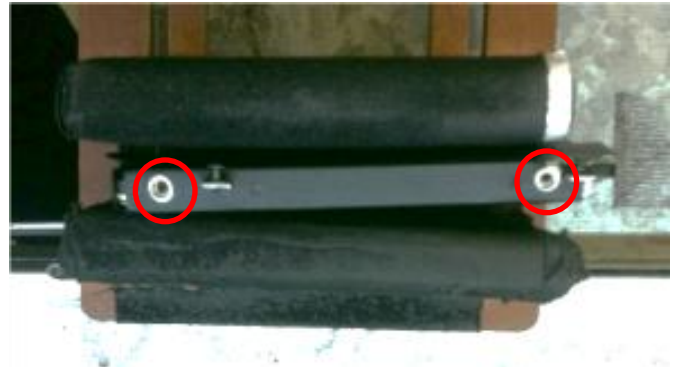


Fig.2

Notes : If finding anything uncommon, notice foreman or assistant at once.

Holding fixture list (holding fixture standard)	Qty	Holding fixture list (holding fixture standard)	Qty
Electric cross screwdriver (#1)	1		

Tabulator : Vick Weng

Auditor : C.S. Lee

Issue department : NPSU-PPE



Standard Operation Procedure

Document No. : Stallone/Ledger FA DIS ASS'Y SOP

Station : 5(1/2)

Name : Loosen K/B Screw

Ver. : 0.1

Date : 2016/10/24

Step :

1. Loosen K/B screw*2.(Fig.1)
2. Open Base unit, then use screwdriver to push the K/B. (Fig.2)

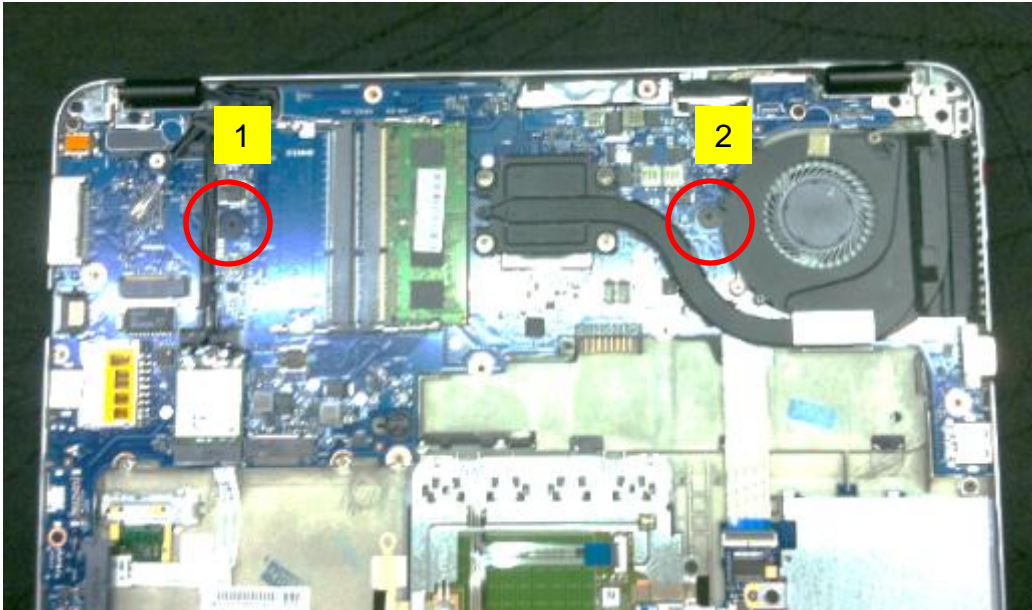


Fig.1



Fig.2

Notes : If finding anything uncommon, notice foreman or assistant at once.

Holding fixture list (holding fixture standard)	Qty	Holding fixture list (holding fixture standard)	Qty
Electric cross screwdriver (#1)	1		

Tabulator : Vick Weng

Auditor : C.S. Lee

Issue department : NPSU-PPE



Standard Operation Procedure

Document No. : Stallone/Ledger FA DIS ASS'Y SOP Station : 5(2/2)
Name : Disassemble Keyboard Ver. : 0.1 Date : 2016/10/24

Step :

- 1. Turn the computer over, then remove keyboard. (Fig.1)
- 2. Disconnect Backlight FFC, KB FFC, Stick point FFC.(Fig.2/Fig.3)



Fig.1

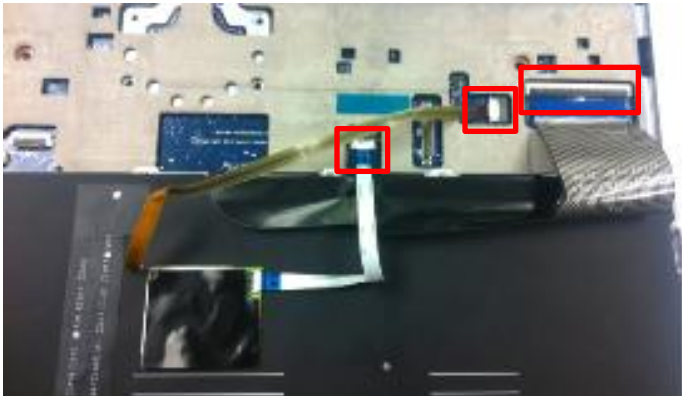


Fig.2

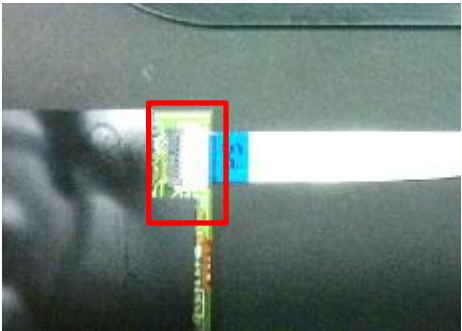


Fig.3

Notes : If finding anything uncommon, notice foreman or assistant at once.

Holding fixture list (holding fixture standard)	Qty	Holding fixture list (holding fixture standard)	Qty



Standard Operation Procedure

Document No. : Stallone/Ledger FA DIS ASS'Y SOP
Name : Disassemble FFC/Cable
Station : 6(1/1)
Ver. : 0.1
Date : 2016/10/24

Step :

- 1.Disassemble F/P FFC & Smart card FFC.(Fig.1)
- 2.Turn the computer over, then disassemble WLAN/WWAN cable until hinge side (Fig.2)
- 3.Disassemble speaker cable. (Fig.3)



Fig.1

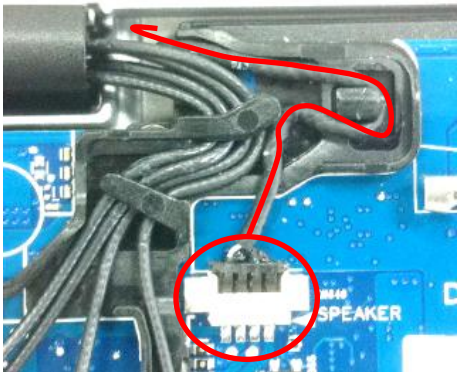


Fig.3

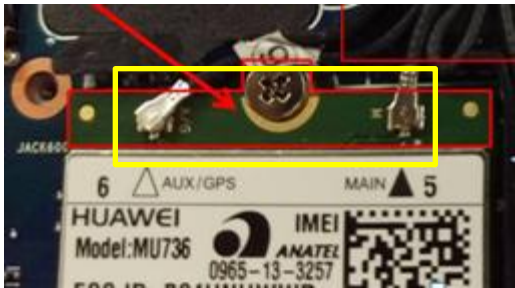


Fig.2



Notes : If finding anything uncommon, notice foreman or assistant at once.

Holding fixture list (holding fixture standard)	Qty	Holding fixture list (holding fixture standard)	Qty



Standard Operation Procedure

Document No. : Stallone/Ledger FA DIS ASS'Y SOP

Station : 7(1/1)

Name : Disassemble WLAN/WWAN Card

Ver. : 0.1

Date : 2016/10/24

Step :

- 1.Loosen screw * 1, then disassemble WLAN card. (Fig.1)
- 2.Loosen screw * 1, then disassemble WWAN card. (Fig.1)



Fig.1



Fig.2

Notes : If finding anything uncommon, notice foreman or assistant at once.

Holding fixture list (holding fixture standard)	Qty	Holding fixture list (holding fixture standard)	Qty
Electric cross screwdriver (#1)	1		



Standard Operation Procedure

Document No. : Stallone/Ledger FA DIS ASS'Y SOP

Station : 8(1/1)

Name : Disassemble DDR & Cable

Ver. : 0.1

Date : 2016/10/24

Step :

1. Disassemble DDR.(Fig.1)
2. Loosen FAN screw*2.(Fig.2)
3. Disassemble FAN cable.(Fig.3)
4. Disassemble LVDS cable.(Fig.4)



Fig.1

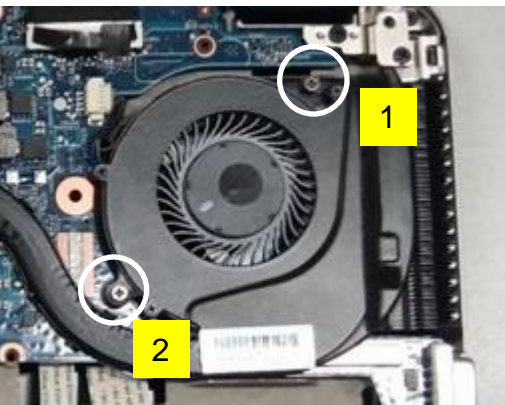


Fig.2



Fig.3

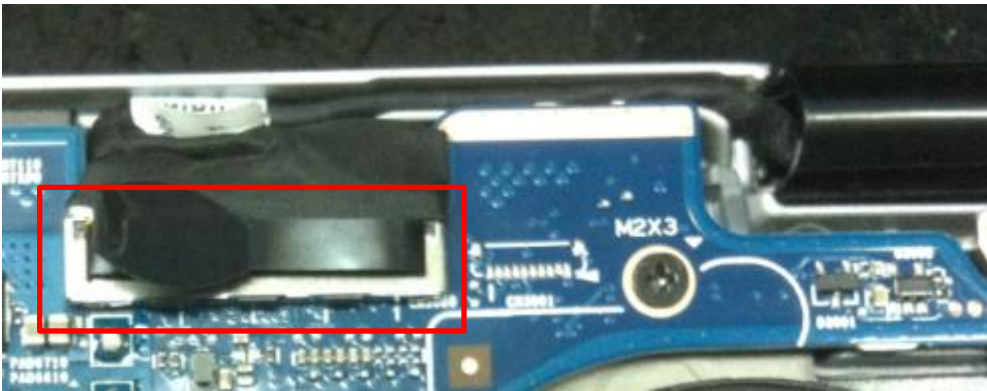


Fig.4

Notes : If finding anything uncommon, notice foreman or assistant at once.

Holding fixture list (holding fixture standard)	Qty	Holding fixture list (holding fixture standard)	Qty
Electric cross screwdriver (#1)	1		



Standard Operation Procedure

Document No. : Stallone/Ledger FA DIS ASS'Y SOP

Station : 9(1/1)

Name : Disassemble Thermal & M/B

Ver. : 0.1

Date : 2016/10/24

Step :

1. Loosen Thermal screw *4, then remove Thermal module. (Fig.1)
2. Loosen M/B screw*4, then remove M/B.(Fig.2)

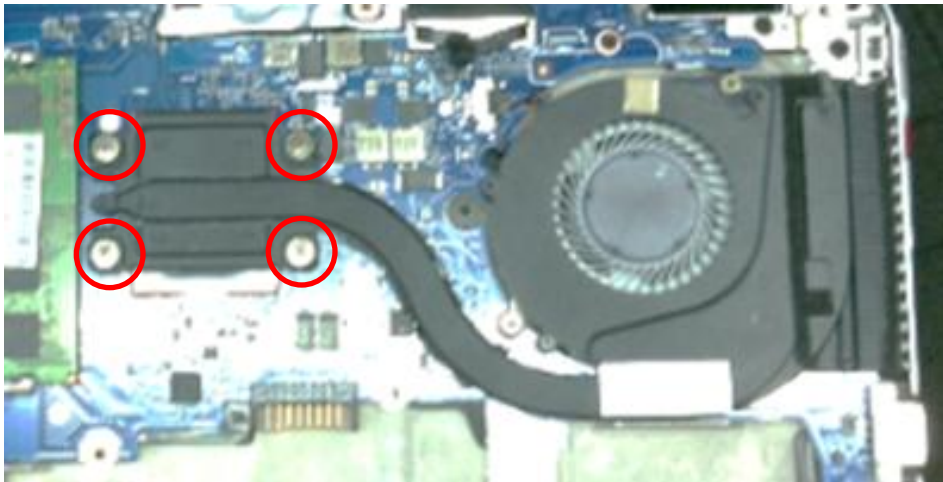


Fig.1

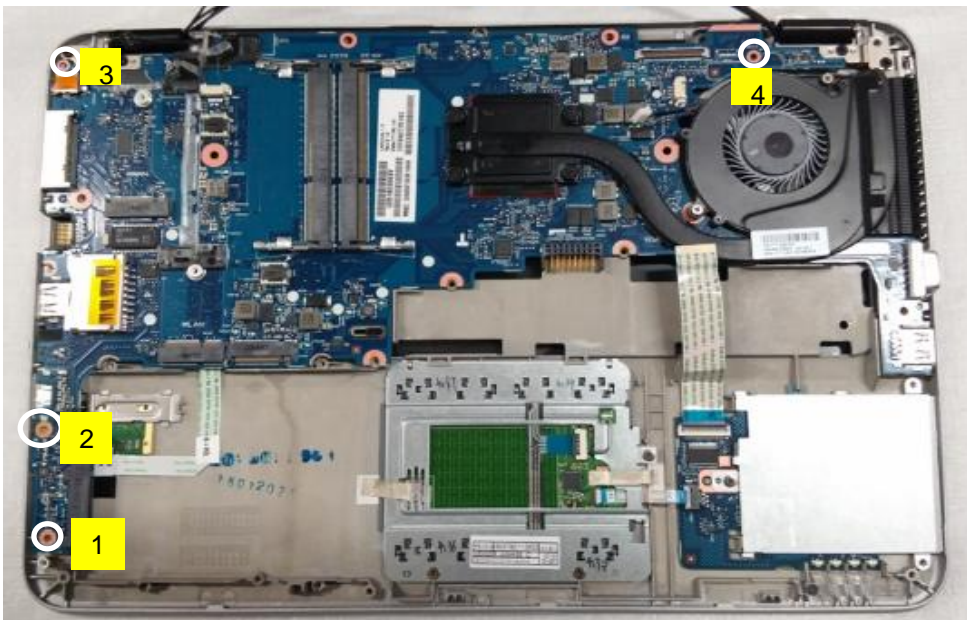


Fig.2

Notes : If finding anything uncommon, notice foreman or assistant at once.

Holding fixture list (holding fixture standard)	Qty	Holding fixture list (holding fixture standard)	Qty
Electric cross screwdriver (#1)	1		



Standard Operation Procedure

Document No. : Stallone/Ledger FA DIS ASS'Y SOP

Station : 10(1/2)

Name : Disassemble F/P & Bracket

Ver. : 0.1

Date : 2016/10/24

Step :

1. Loosen screw*1, then disassemble F/P bracket 、 F/P module or dummy.(Fig.1/Fig.2)



Fig.1



Fig.2

Notes : If finding anything uncommon, notice foreman or assistant at once.

Holding fixture list (holding fixture standard)	Qty	Holding fixture list (holding fixture standard)	Qty
Electric cross screwdriver (#1)	1		



Standard Operation Procedure

Document No. : Stallone/Ledger FA DIS ASS'Y SOP

Station : 10(2/2)

Name : Loosen hinge screw

Ver. : 0.1

Date : 2016/10/24

Step :

- 1. Loosen hinge screw*4, then separate panel set & base unit(Fig.1)



Fig.1



Fig.

Fig.2

Notes : If finding anything uncommon, notice foreman or assistant at once.

Holding fixture list (holding fixture standard)	Qty	Holding fixture list (holding fixture standard)	Qty
Electric cross screwdriver (#1)	1		

Tabulator : Vick Weng

Auditor : C.S. Lee

Issue department : NPSU-PPE



Standard Operation Procedure

Document No. : Stallone/Ledger FA DIS ASS'Y SOP

Station : 11(1/1)

Name : Disassemble Speaker & NFC Module

Ver. : 0.1

Date : 2016/10/24

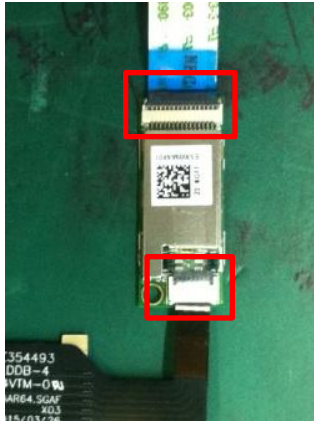


Fig.3

Step :

1. Loosen speaker screw*2, then remove speaker module.(Fig.1)

2. Disassemble pick button FFC.(Fig.2)

For NFC SKU:

3. Disassemble NFC module, then disconnect FFC from NFC module.(Fig.2/Fig.3)



Fig.1

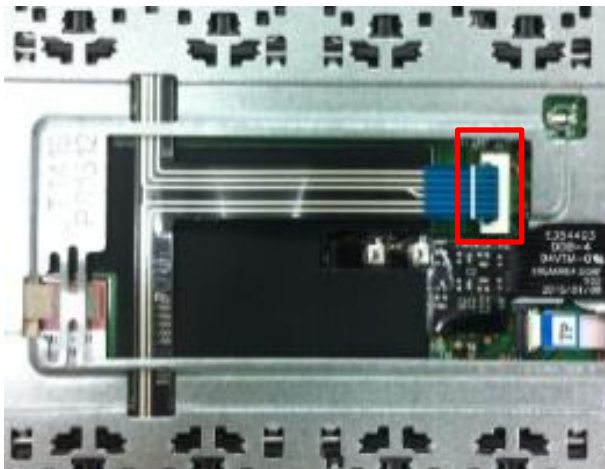


Fig.2

Notes : If finding anything uncommon, notice foreman or assistant at once.

Holding fixture list (holding fixture standard)	Qty	Holding fixture list (holding fixture standard)	Qty
Electric cross screwdriver (#1)	1		

Tabulator : Vick Weng

Auditor : C.S. Lee

Issue department : NPSU-PPE



Standard Operation Procedure

Document No. : Stallone/Ledger FA DIS ASS'Y SOP

Station : 12(1/1)

Name : Disassemble Smart card board

Ver. : 0.1 Date : 2016/10/24

Step :

1. Disassemble touch pad FFC.(Fig.1)
2. Loosen smart card bracket screw *3, then remove bracket.(Fig.2)
3. Disassemble FFC & smart card board.
(Fig.2/Fig.3)

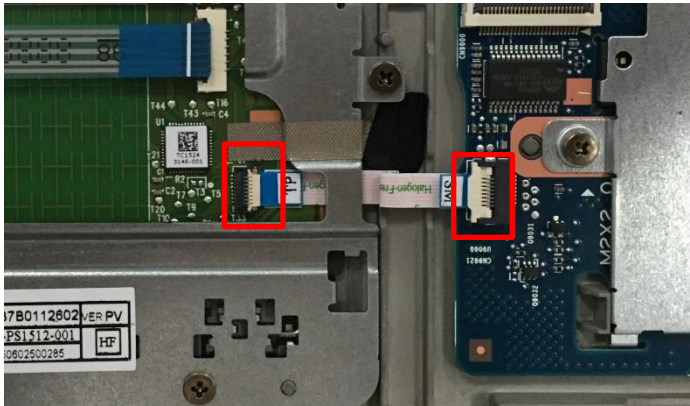


Fig.1

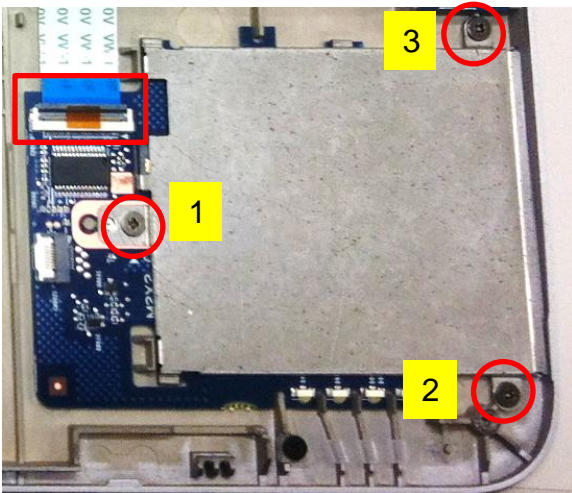


Fig.2

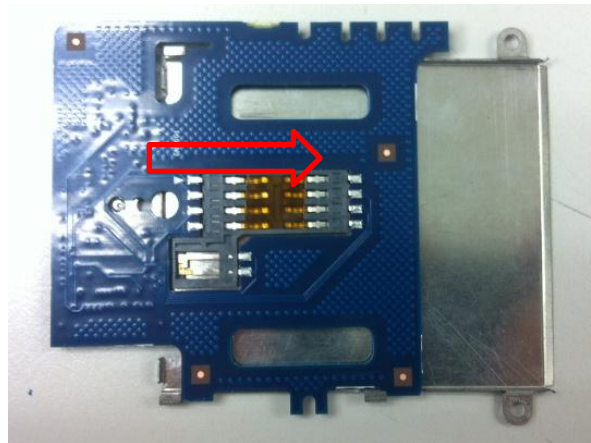


Fig.3

Notes : If finding anything uncommon, notice foreman or assistant at once.

Holding fixture list (holding fixture standard)	Qty	Holding fixture list (holding fixture standard)	Qty
Electric cross screwdriver (#1)	1		

Tabulator : Vick Weng

Auditor : C.S. Lee

Issue department : NPSU-PPE



Standard Operation Procedure

Document No. : Stallone/Ledger FA DIS ASS'Y SOP Station : 13(1/1)
Name : Disassemble touch pad Ver. : 0.1 Date : 2016/10/24

- Step :
1. Loosen screw*3, then disassemble touch pad from Top Case.(Fig.1)

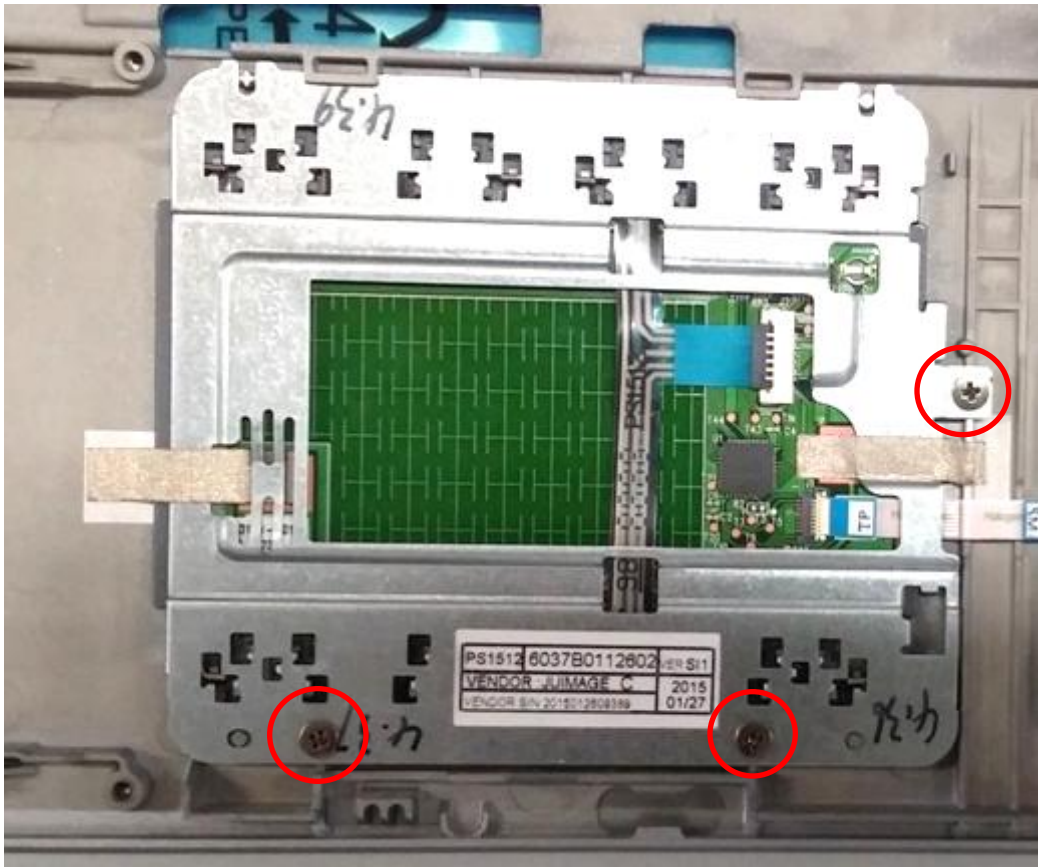


Fig.1

Notes : If finding anything uncommon, notice foreman or assistant at once.

Holding fixture list (holding fixture standard)	Qty	Holding fixture list (holding fixture standard)	Qty
Electric cross screwdriver (#1)	1		

MANUFACTURING PROCESS INSTRUCTIONS

MECHANICAL ASSEMBLY

MODEL :Stallone/Ledger

Sub-assembly name:	LCM DIS ASS'Y		
Document No.:	Stallone/Ledger LCM DIS ASS'Y SOP		
Written by:	Vick Weng	Revision:	0.1
Date:	2016/10/24	Page:	1

A. Current station version list

Station	Ver.	Station	Ver.	Station	Ver.	Station	Ver.
1	0.1						
2	0.1						
3	0.1						
4	0.1						
5	0.1						
6	0.1						
7	0.1						
8	0.1						
9	0.1						

B. Version Modify list

Revision	Date	Station	Content	Ver.	Design
0.1	2016/10/24	ALL	FIRST VERSION	0.1	Vick Weng



Standard Operation Procedure

Document No. : Stallone/Ledger LCM DIS ASS'Y SOP Station : 1(1/1)
Name : Disassemble Bezel Ver. : 0.1 Date : 2016/10/24

- Step :
- 1. Disassemble bezel in order.(Fig.1)
 - 2. Rip foil from camera module.(Fig.2)

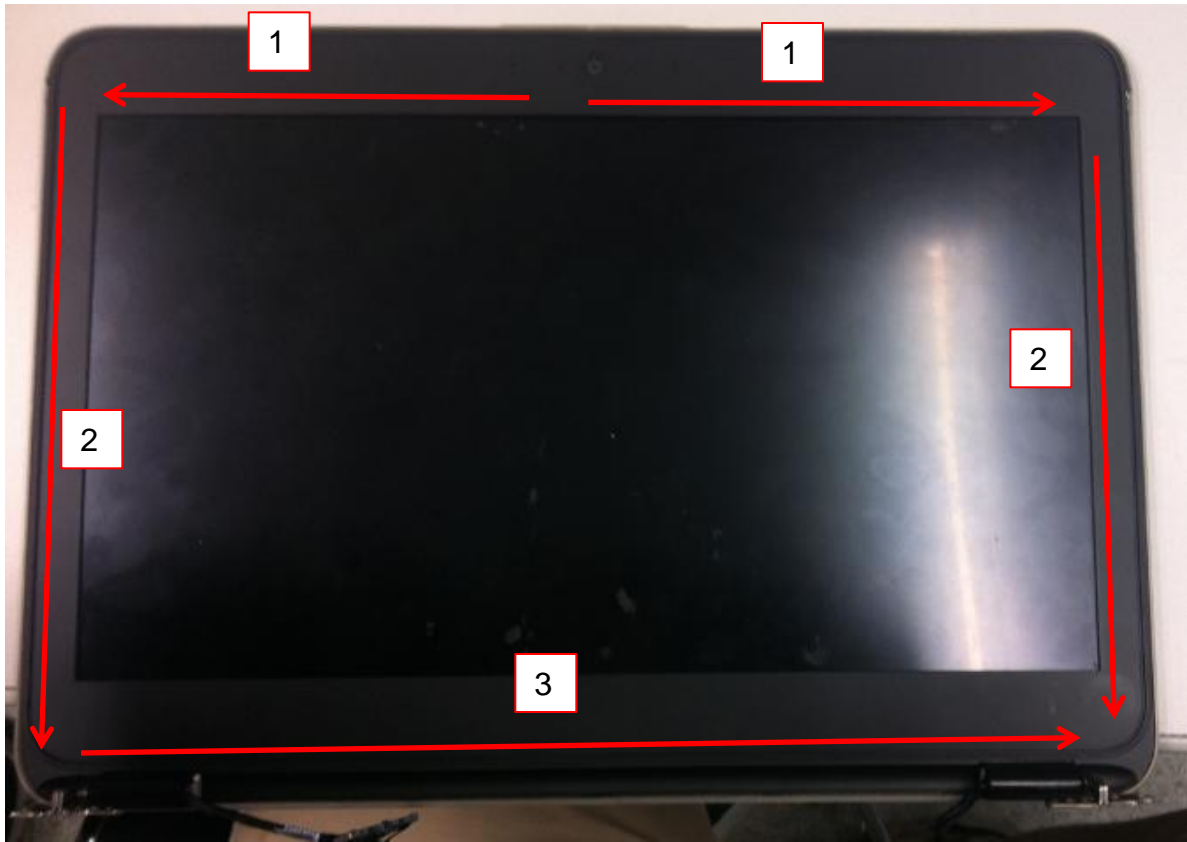


Fig.1



Fig.2

Notes : If finding anything uncommon, notice foreman or assistant at once.

Holding fixture list (holding fixture standard)	Qty	Holding fixture list (holding fixture standard)	Qty



Standard Operation Procedure

Document No. : Stallone/Ledger LCM DIS ASS'Y SOP

Station : 2(1/1)

Name : Disassemble Hinge Cap

Ver. : 0.1

Date : 2016/10/24

- Step :
1. Loosen screw* 2.(Fig.1/Fig.2)
2. Disassemble hinge cap* 2.(Fig.1/Fig.2)



Fig.1



Fig.2

Notes : If finding anything uncommon, notice foreman or assistant at once.

Holding fixture list (holding fixture standard)	Qty	Holding fixture list (holding fixture standard)	Qty
Electric cross screwdriver (#0)	1		



Standard Operation Procedure

Document No. : Stallone/Ledger LCM DIS ASS'Y SOP

Station : 3(1/1)

Name : Disassemble Hinge BRKT

Ver. : 0.1 Date : 2016/10/24

Step :

1. Loosen screw* 6.(Fig.1/Fig.2)
2. Disassemble hinge bracket.(Fig.1/Fig.2)

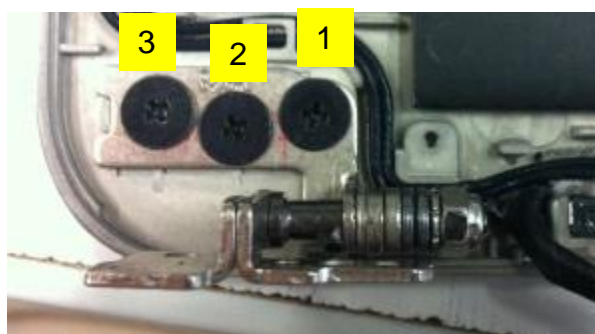


Fig.1

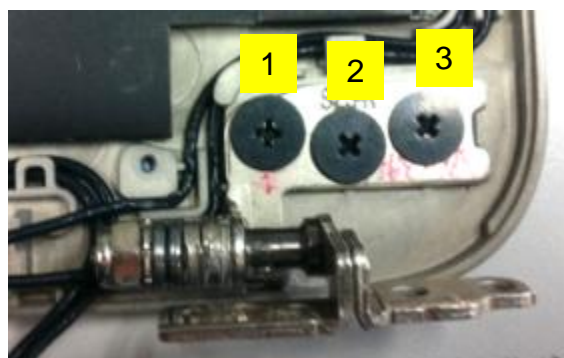


Fig.2

Notes : If finding anything uncommon, notice foreman or assistant at once.

Holding fixture list (holding fixture standard)	Qty	Holding fixture list (holding fixture standard)	Qty
Electric cross screwdriver (#1)	1		

Tabulator : Vick Weng

Auditor : C.S. Lee

Issue department : NPSU-PPE



Standard Operation Procedure

Document No. : Stallone/Ledger LCM DIS ASS'Y SOP

Station : 4(1/1)

Name : Disassemble Antenna Cable

Ver. : 0.1

Date : 2016/10/24

Step :

1. Disassemble downside antenna cable from right to left .(Fig.1/Fig.2/Fig.3)

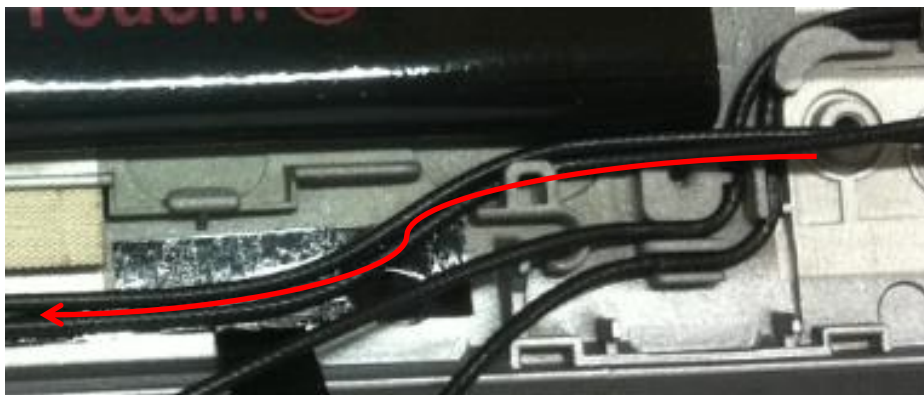


Fig.1



Fig.2

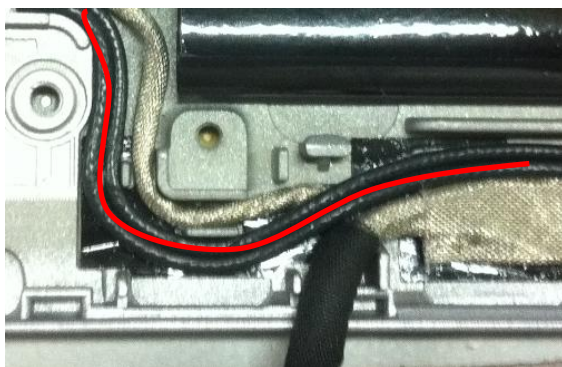


Fig.3

Notes : If finding anything uncommon, notice foreman or assistant at once.

Holding fixture list (holding fixture standard)	Qty	Holding fixture list (holding fixture standard)	Qty

Tabulator : Vick Weng

Auditor : C.S. Lee

Issue department : NPSU-PPE



Standard Operation Procedure

Document No. : Stallone/Ledger LCM DIS ASS'Y SOP

Station : 5(1/1)

Name : Disassemble Panel

Ver. : 0.1

Date : 2016/10/24

- Step :
1. Loosen panel screw *4.(Fig.1)
2. Disassemble panel from LCD cover, then disconnect LVDS cable.(Fig.2)



Fig.1

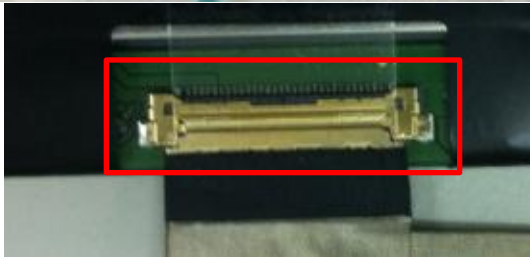


Fig.2

Notes : If finding anything uncommon, notice foreman or assistant at once.

Holding fixture list (holding fixture standard)	Qty	Holding fixture list (holding fixture standard)	Qty
Electric cross screwdriver (#0)	1		



Standard Operation Procedure

Document No. : Stallone/Ledger LCM DIS ASS'Y SOP Station : 6(1/1)
Name : Disassemble Cable Ver. : 0.1 Date : 2016/10/24

- Step :
1. Disassemble antenna cable & camera cable from LCD cover.(Fig.1/Fig.2)

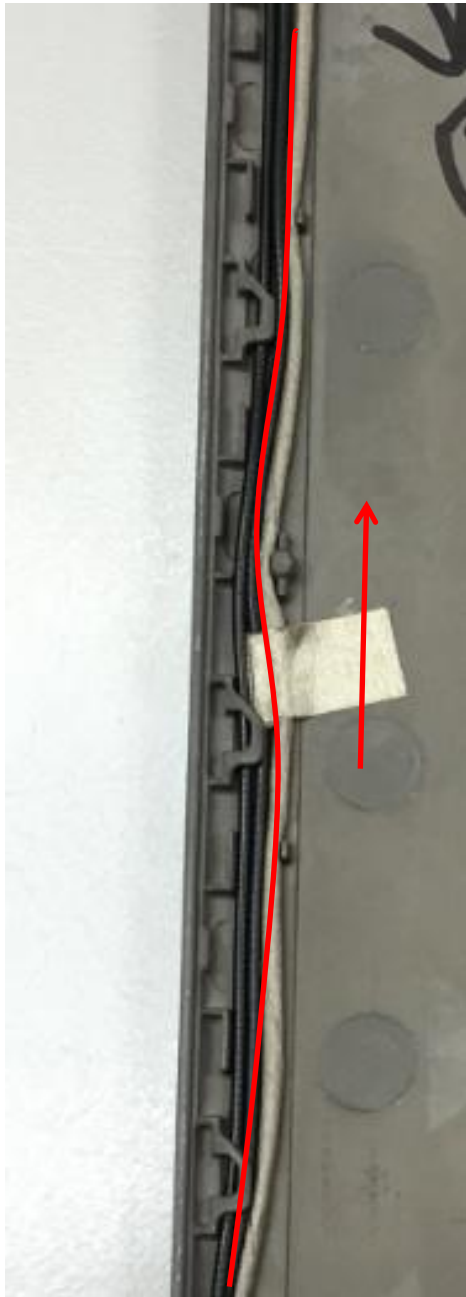


Fig.1

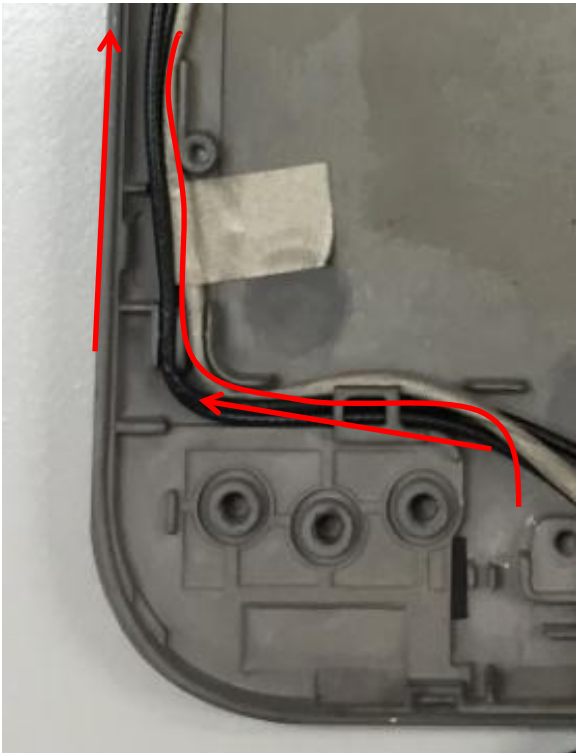


Fig.2

Notes : If finding anything uncommon, notice foreman or assistant at once.

Holding fixture list (holding fixture standard)	Qty	Holding fixture list (holding fixture standard)	Qty



Standard Operation Procedure

Document No. : Stallone/Ledger LCM DIS ASS'Y SOP Station : 7(1/2)
Name : Disassemble Cable Ver. : 0.1 Date : 2016/10/24

- Step :
1. Disassemble antenna cable & camera cable from LCD cover.(Fig.1)

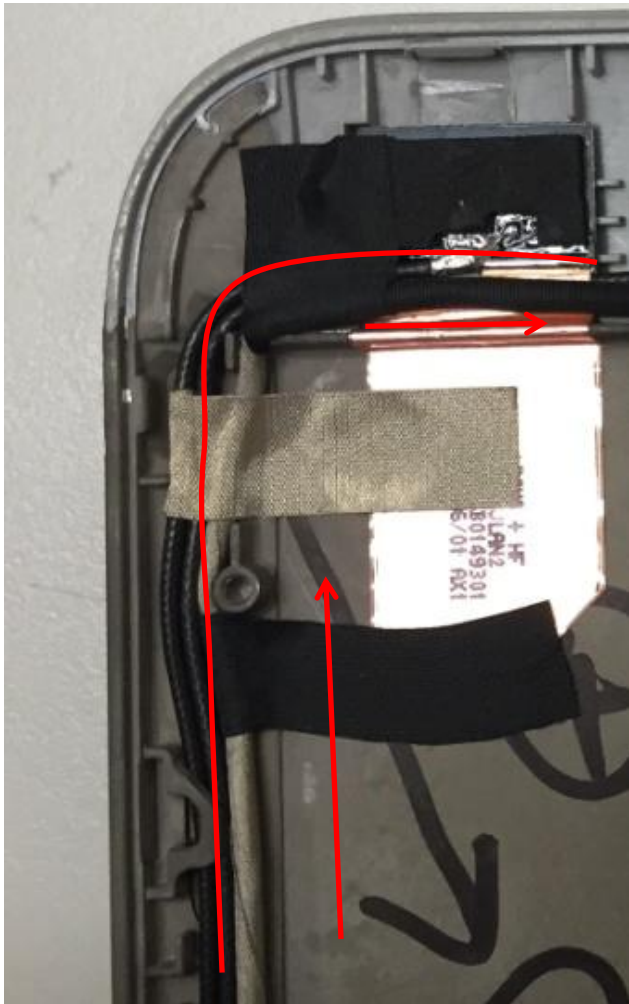


Fig.1

Notes : If finding anything uncommon, notice foreman or assistant at once.

Holding fixture list (holding fixture standard)	Qty	Holding fixture list (holding fixture standard)	Qty



Standard Operation Procedure

Document No. : Stallone/Ledger LCM DIS ASS'Y SOP

Station : 7(2/2)

Name : Disassemble Camera Module

Ver. : 0.1

Date : 2016/10/24

Step :

1. Disassemble camera cable.(Fig.1/Fig.2/Fig.3)
2. Remove camera module from LCD cover, then separate camera cable from camera module.(Fig.4)



Fig.1



Fig.2



Fig.3



Fig.4

Notes : If finding anything uncommon, notice foreman or assistant at once.

Holding fixture list (holding fixture standard)	Qty	Holding fixture list (holding fixture standard)	Qty

Tabulator : Vick Weng

Auditor : C.S. Lee

Issue department : NPSU-PPE



Standard Operation Procedure

Document No. : Stallone/Ledger LCM DIS ASS'Y SOP

Station : 8(1/1)

Name : Disassemble Cable

Ver. : 0.1

Date : 2016/10/24

Step :

1. Disassemble antenna cable from LCD cover.
(Fig.1/Fig.2)

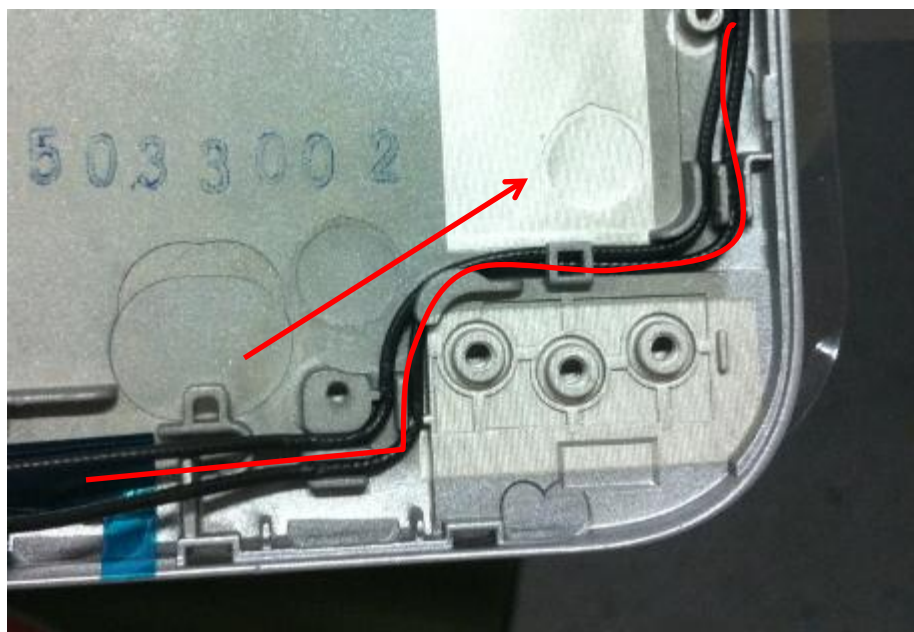


Fig.1



Fig.2

Notes : If finding anything uncommon, notice foreman or assistant at once.

Holding fixture list (holding fixture standard)	Qty	Holding fixture list (holding fixture standard)	Qty

Tabulator : Vick Weng

Auditor : C.S. Lee

Issue department : NPSU-PPE



Standard Operation Procedure

Document No. : Stallone/Ledger LCM DIS ASS'Y SOP Station : 9(1/1)
Name : Disassemble Antenna PCB Ver. : 0.1 Date : 2016/10/24

- Step :
1. Disassemble WLAN/WWAN antenna PCB from LCD cover.(Fig.1/Fig.2)



Fig.1



Fig.2

Notes : If finding anything uncommon, notice foreman or assistant at once.

Holding fixture list (holding fixture standard)	Qty	Holding fixture list (holding fixture standard)	Qty