



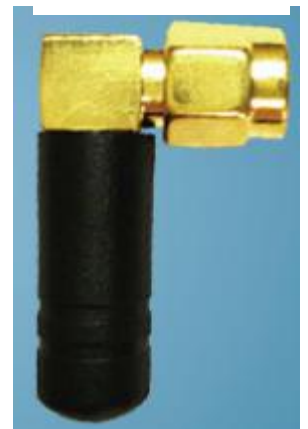
## Model: TLW2.5A-SMA-Male

### Wifi Antenna 2.4G rubber antenna

Electrical specifications	
Frequency Range(MHz)	2400-2500MHz
Impedance	50ohm
Gain	1.5dBi
Polarization	Vertical
Radiation	Omni
VSWR	$\leq 2.0$ typical at center
Maximum input power (W)	50 W
Mechanical specifications	
Connector	Regular SMA-Male
Height	2.6-2.7cm (25.6mm)
Radome Material	TPEE
Color	Black
Wavelength	1/4 wave
Operating temperature (°C)	- 40° to +90° C



SMA-Male





Model: TLW2.5A-SMA-Male



VSWR Testing chart





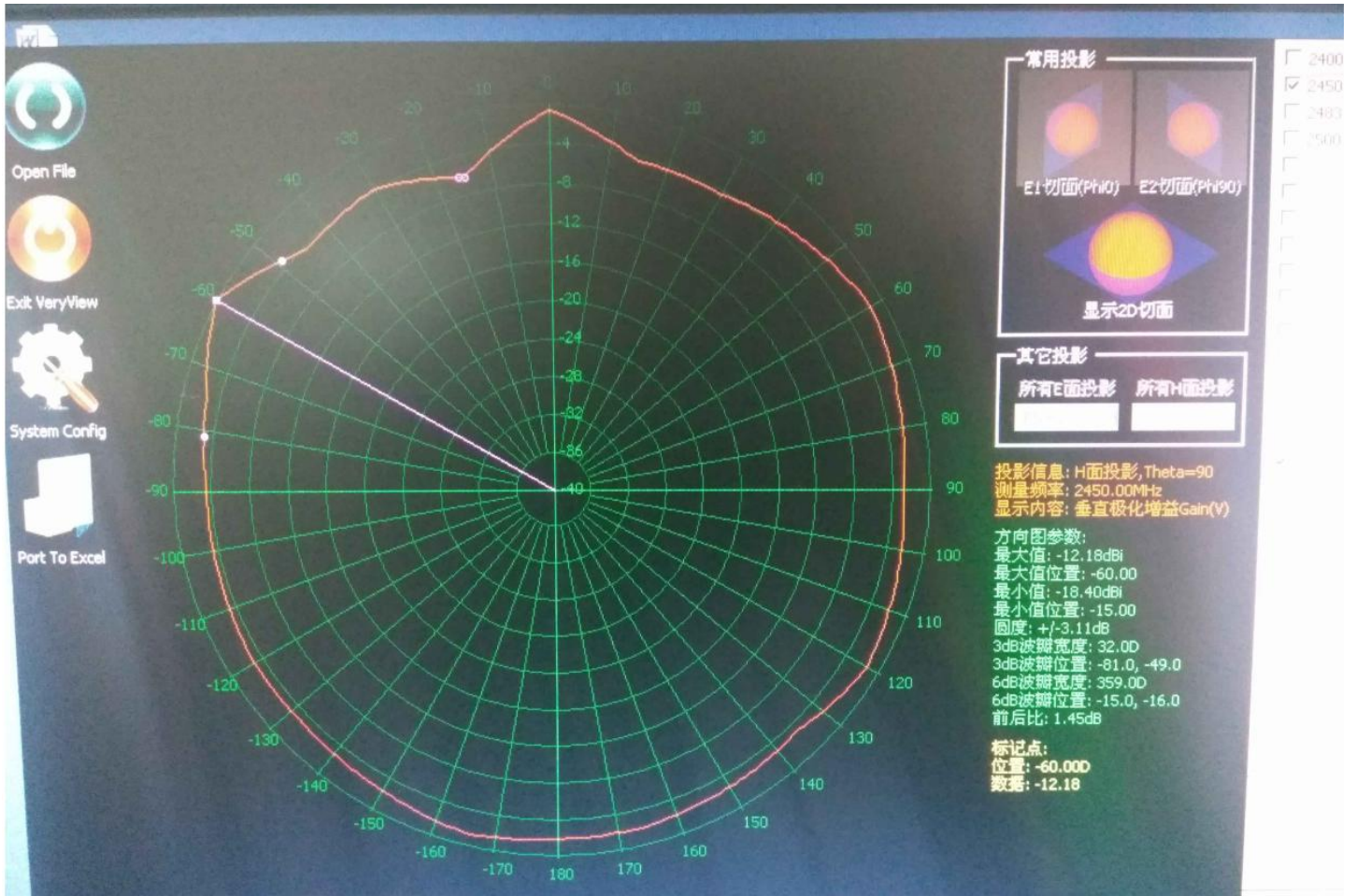
# Radiation pattern

E-Plane:





## H-Plane:



## Gain pattern test report:

Frequency (MHz)	Total Gain (dBi) In +X Axis	Total Gain (dBi) In +Y Axis	Total Gain (dBi) In -X Axis	Total Gain (dBi) In -Y Axis
2400	0.4	0.5	0.8	0.4
2410	0.4	0.4	0.8	0.3
2420	0.5	0.4	0.7	0.3
2430	0.6	0.6	0.9	0.6
2440	0.7	1.0	1.3	1.1
2450	1.0	1.3	1.5	1.4
2460	1.0	1.3	1.5	1.3
2470	0.8	1.1	1.2	1.1
2480	0.4	0.6	0.7	0.6
2490	0.1	0.0	0.1	0.1
2500	0.8	0.7	0.9	0.8

