

Date: 07/21/2020

Subject: Reduced Unit Installation Clearance for Side Discharge Outdoor Units

Models: RAC, CAC, FJM, DVM S Eco

### Reduced Unit Installation Clearance for Side Discharge Outdoor Units

Some applications may require installation of outdoor units in closer proximity to other outdoor units than what is published in standard outdoor unit installation manuals. For the models specified below, the clearance between two outdoor units can be decreased when air guides are applied. Details regarding clearances and requirements are detailed on the following pages.

ODU Model Type	ODU Model	US Code
Wind-Free™ <sup>1</sup> RAC 3.0e	AR09CSFCMWKXCV	RXS09CMC
	AR12CSFCMWKXCV	RXS12CMC
	AR15CSFCMWKXCV	RXS15CMC
	AR18CSFCMWKXCV	RXS18CMC
	AR24CSFCMWKXCV	RXS24CMC
Wind-Free™ <sup>1</sup> RAC 3.0	AR09CSDABWKXCV	RXS09ABC
	AR12CSDABWKXCV	RXS12ABC
	AR15CSDABWKXCV	RXS15ABC
	AR18CSDABWKXCV	RXS18ABC
	AR24CSDABWKXCV	RXS24ABC
Max Heat RAC 3.0	AR09CSDACWKXCV	RXS09ACC
	AR12CSDACWKXCV	RXS12ACC
	AR15CSDACWKXCV	RXS15ACC
	AR18CSDACWKXCV	RXS18ACC
	AR24CSDACWKXCV	RXS24ACC
Wind-Free™ <sup>1</sup> RAC 2.0	AR09TSFABWKXCV	RXS09ABT
	AR12TSFABWKXCV	RXS12ABT
	AR18TSFABWKXCV	RXS18ABT
	AR24TSFABWKXCV	RXS24ABT
Wind-Free™ <sup>1</sup> RAC 2.0e	AR09BSFCMWKXCV	RXS09CMB
	AR12BSFCMWKXCV	RXS12CMB
	AR18BSFCMWKXCV	RXS18CMB
	AR24BSFCMWKXCV	RXS24CMB
Max Heat® RAC 2.0	AR09TSFACWKXCV	RXS09ACT
	AR12TSFACWKXCV	RXS12ACT
	AR15TSFACWKXCV	RXS15ACB
	AR18TSFACWKXCV	RXS18ACT
	AR24TSFACWKXCV	RXS24ACT
MAX RAC	AR36BSHUMGMXCV	RXS36UMB
CAC -40 Cooling	AC018BXSCC/AA	CXC18SCB
	AC024BXSCC/AA	CXC24SCB
	AC030BXSCC/AA	CXC30SCB
	AC036BXSCC/AA	CXC36SCB
CAC Max Heat	AC030BXSCCH/AA	CXH30SCB
	AC036BXSCCH/AA	CXH36SCB
	AC030JXSCCH/AA	CXH30SCJ
	AC036JXSCCH/AA	CXH36SCJ

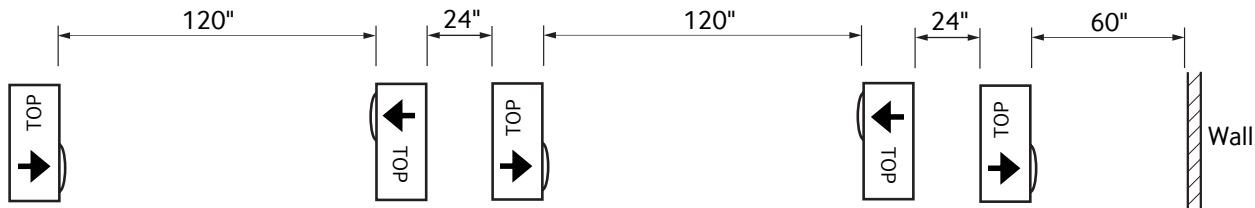
<sup>1</sup> The Wind-Free™ unit delivers an air current that is under 0.15 m/s while in Wind-Free™ mode. Air velocity that is below 0.15 m/s is considered "still air" as defined by ASHRAE 55-2013 (American Society of Heating, Refrigerating, and Air-Conditioning Engineers).

ODU Model Type	ODU Model	US Code
Standard CAC	AC009BXADCH/AA	CXH09ADB
	AC012BXADCH/AA	CXH12ADB
	AC018BXADCH/AA	CXH18ADB
	AC024BXADCH/AA	CXH24ADB
	AC030BXADCH/AA	CXH30ADB
	AC036BXADCH/AA	CXH36ADB
	AC042BXADCH/AA	CXH42ADB
	AC048BXADCH/AA	CXH48ADB
	AC009KXADCH/AA	CXH09ADK
	AC012KXADCH/AA	CXH12ADK
	AC018JXADCH/AA	CXH18ADJ
	AC018KXADCH/AA	CXH18ADK
	AC024JXADCH/AA	CXH24ADJ
	AC030JXADCH/AA	CXH30ADJ
	AC036JXADCH/AA	CXH36ADJ
	AC042JXADCH/AA	CXH42ADJ
FJM	AJ020BXJ2CH/AA	JXH20J2B
	AJ024BXJ3CH/AA	JXH24J3B
	AJ036BXJ4CH/AA	JXH36J4B
	AJ048BXJ5CH/AA	JXH48J5B
	AJ020JCJ2CH/AA	N/A
	AJ024JCJ3CH/AA	N/A
	AJ036JCJ5CH/AA	N/A
	AJ020TXJ2CH/AA	JXH20J2T
	AJ024TXJ3CH/AA	JXH24J3T
	AJ036TXJ4CH/AA	JXH36J4T
	AJ048TXJ5CH/AA	JXH48J5T
FJM Max Heat	AJ020BXS3CH/AA	JXH20S3B
	AJ024BXS4CH/AA	JXH24S4B
	AJ030BXS4CH/AA	JXH30S4B
	AJ036BXS4CH/AA	JXH36S4B
	AJ020TXS3CH/AA	JXH20S3T
	AJ024TXS4CH/AA	JXH24S4T
	AJ030TXS4CH/AA	JXH30S4T
	AJ036TXS4CH/AA	JXH36S4T
DVM S Eco	AM036*XMDC*/AA	N/A
	AM048*XMDC*/AA	N/A
	AM053*XMDC*/AA	N/A
	AM060*XMDC*/AA	N/A

## Clearances

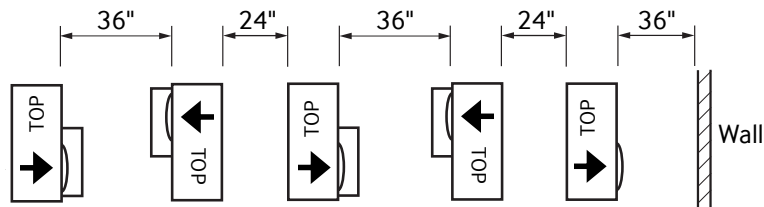
### Standard Outdoor Unit Clearances (minimum)

Additional installation clearances are available in the applicable outdoor unit installation manuals. Always refer to the installation manual for full installation details and other requirements that are not noted in this document.



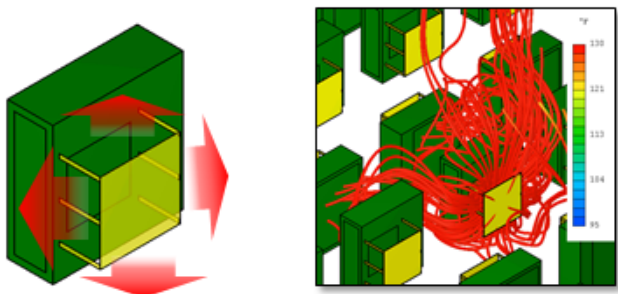
### Modified Outdoor Unit Clearances (minimum)

When applying field provided air guides, the distance between outdoor units blowing towards each other can be reduced as noted below. The distance between the discharge side of an outdoor unit and an adjacent wall can also be reduced. Installation in an open area without a roof is required. Outside ambient temperatures must be 115°F (46.1°C) or lower. Depending on the outdoor unit model, 36" clearance may not be possible due to National Electrical Code (NEC) requirements and high voltage clearance. Please refer to all local and national safety and electrical codes before installation.



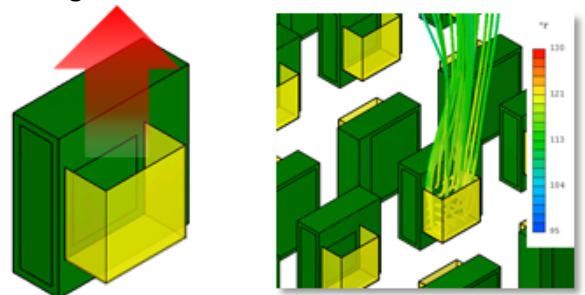
Standard wind baffles provided by Samsung HVAC (WBF-\*M, WBF-\*M-B) **are not acceptable** for this application. The air guide must have a closed bottom and sides (excluding holes for water drainage). See page 3 of this document for recommended air guide dimensions.

#### Not allowed: WBF-\*M, WBF-\*M-B



<sup>1</sup> The WindFree™ unit delivers an air current that is under 0.15 m/s while in WindFree™ mode. Air velocity that is below 0.15 m/s is considered "still air" as defined by ASHRAE (American Society of Heating, Refrigerating, and Air-Conditioning Engineers).

#### Design with enclosed bottom and sides

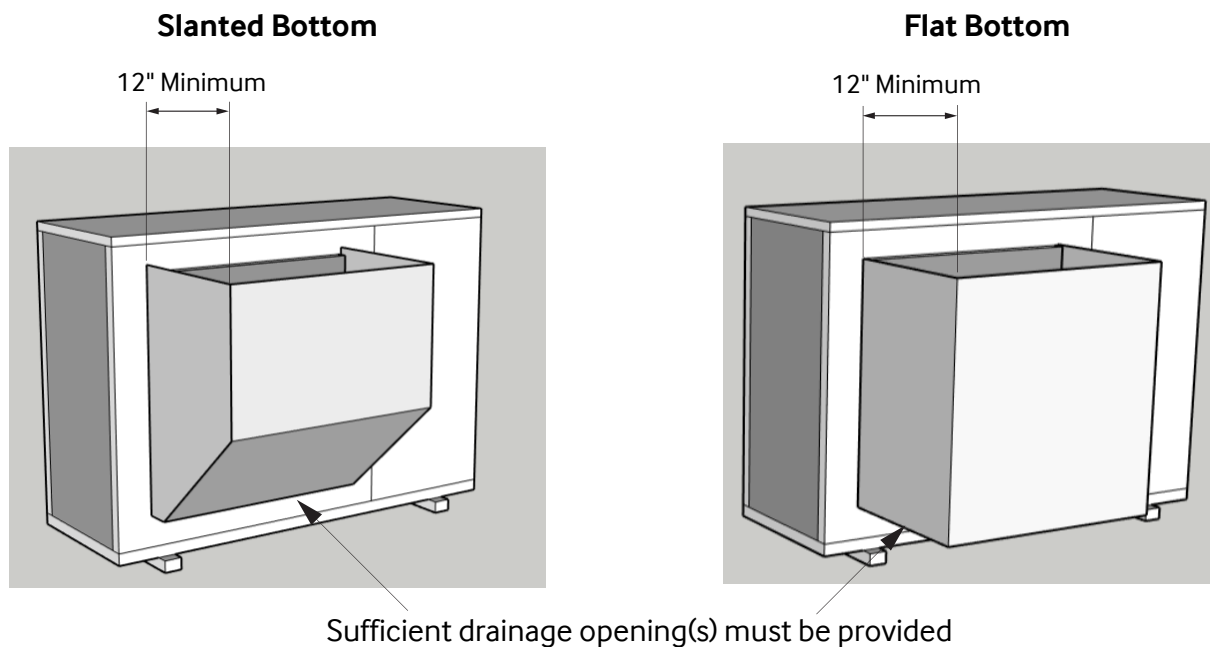


NOTE: The example above shows an air guide with a flat bottom. The bottom can be angled to promote better water drainage.

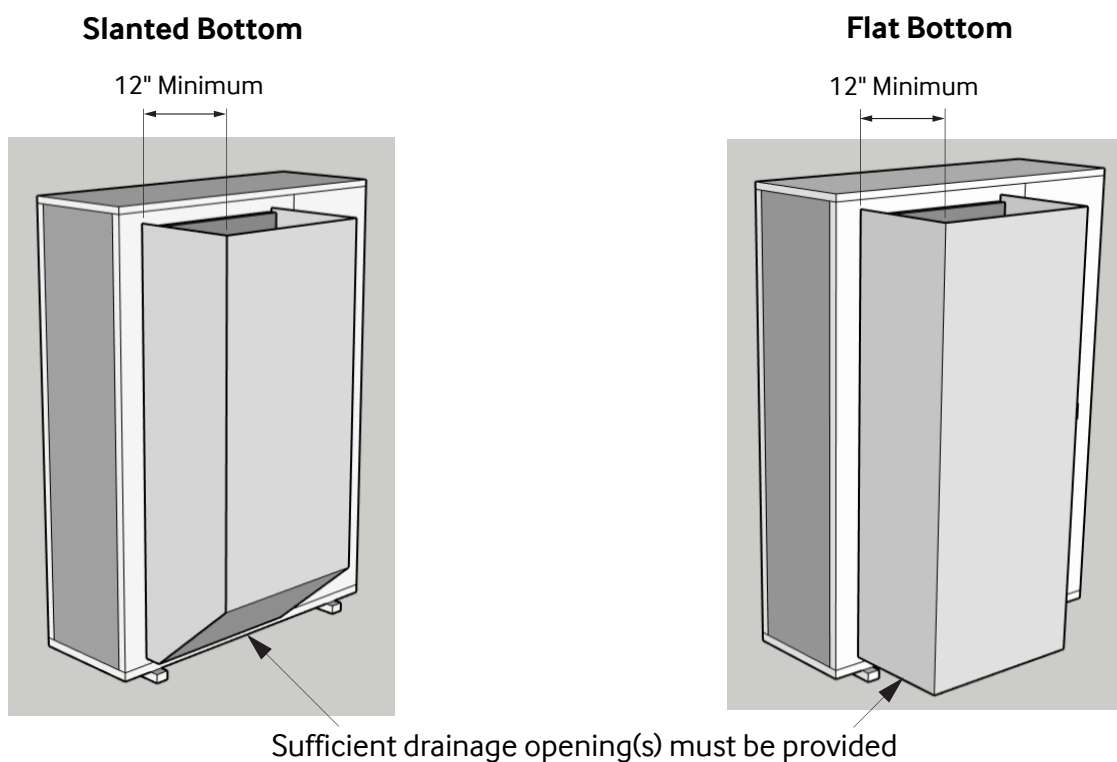
## Dimensions

The air guide depth must be 12" minimum from the outdoor unit. The width must cover the entire fan outlet.

### Single Fan Models



### Dual Fan Models



Samsung HVAC maintains a policy of ongoing development, specifications are subject to change without notice.