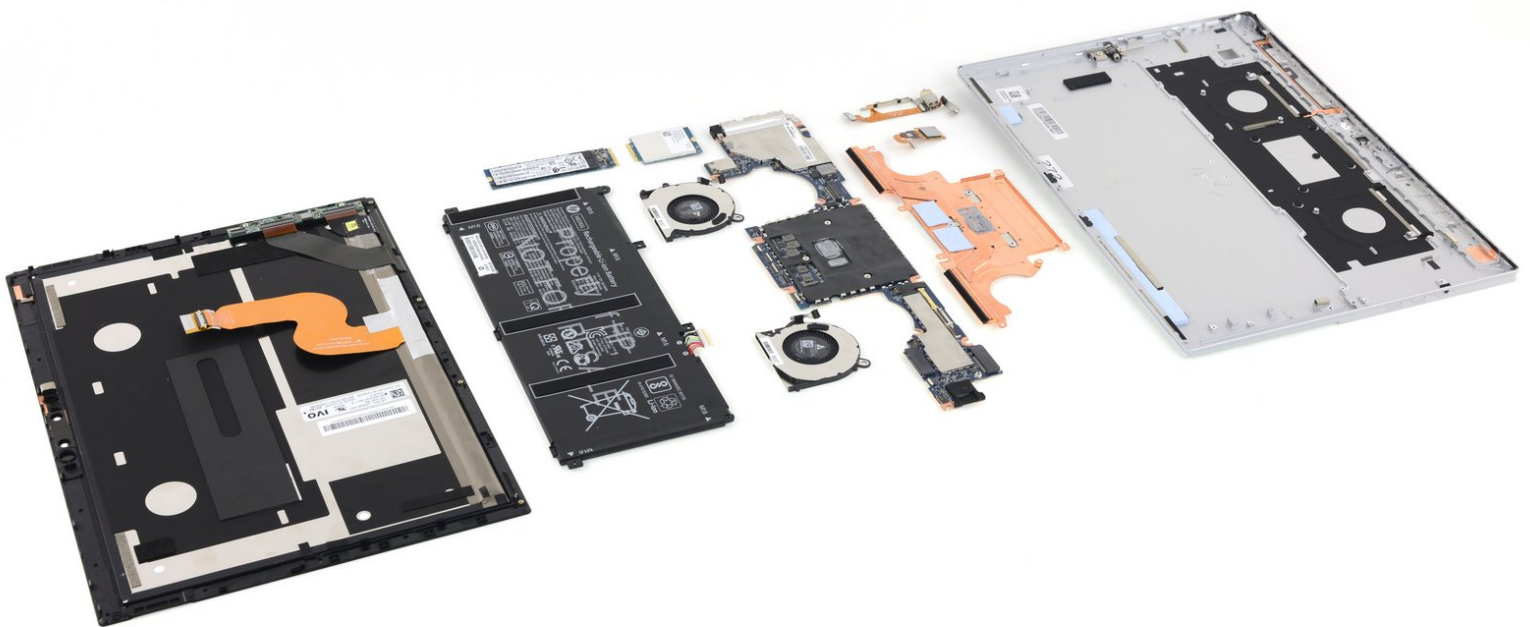




Elite X2 1013 G3 Repairability Assessment

Elite X2 1013 G3 Repairability Assessment

Written By: iRobot



INTRODUCTION

Elite X2 1013 G3 repairability assessment.

HP provides a full service manual for the [Elite X2 1013 G3](#).



TOOLS:

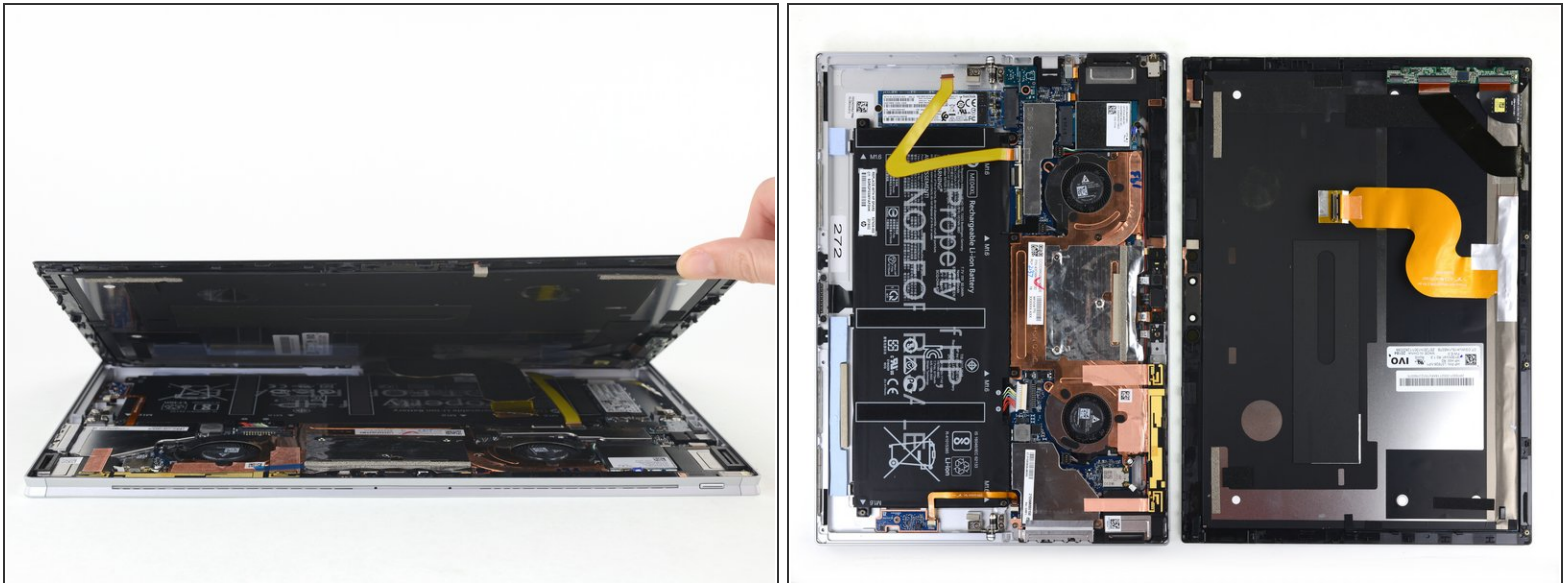
- [Phillips #0 Screwdriver](#) (1)
 - [T5 Torx Screwdriver](#) (1)
-

Step 1 — Elite X2 1013 G3 Repairability Assessment



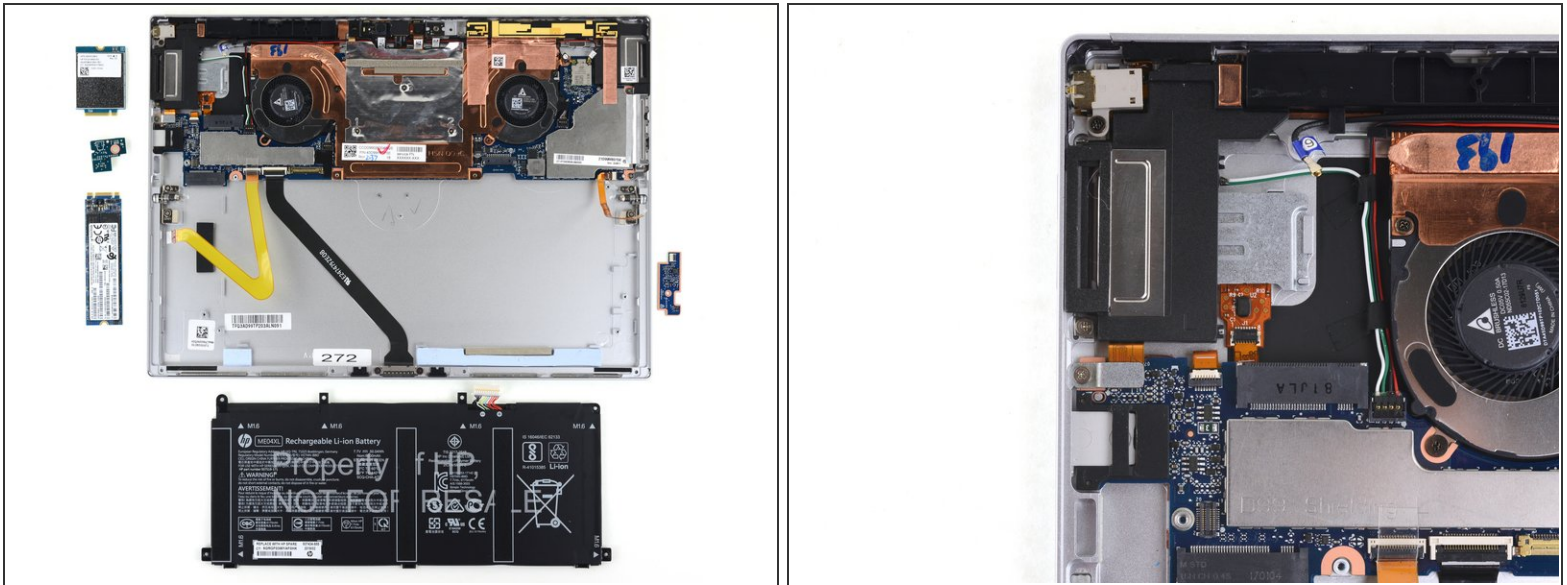
- External reference.
- The tablet isn't ingress-proofed, so many gaps in the lower case (including ports, vents, speaker grilles etc.) may allow water damage or particle buildup.
- The hinge is also a point of mechanical failure.

Step 2



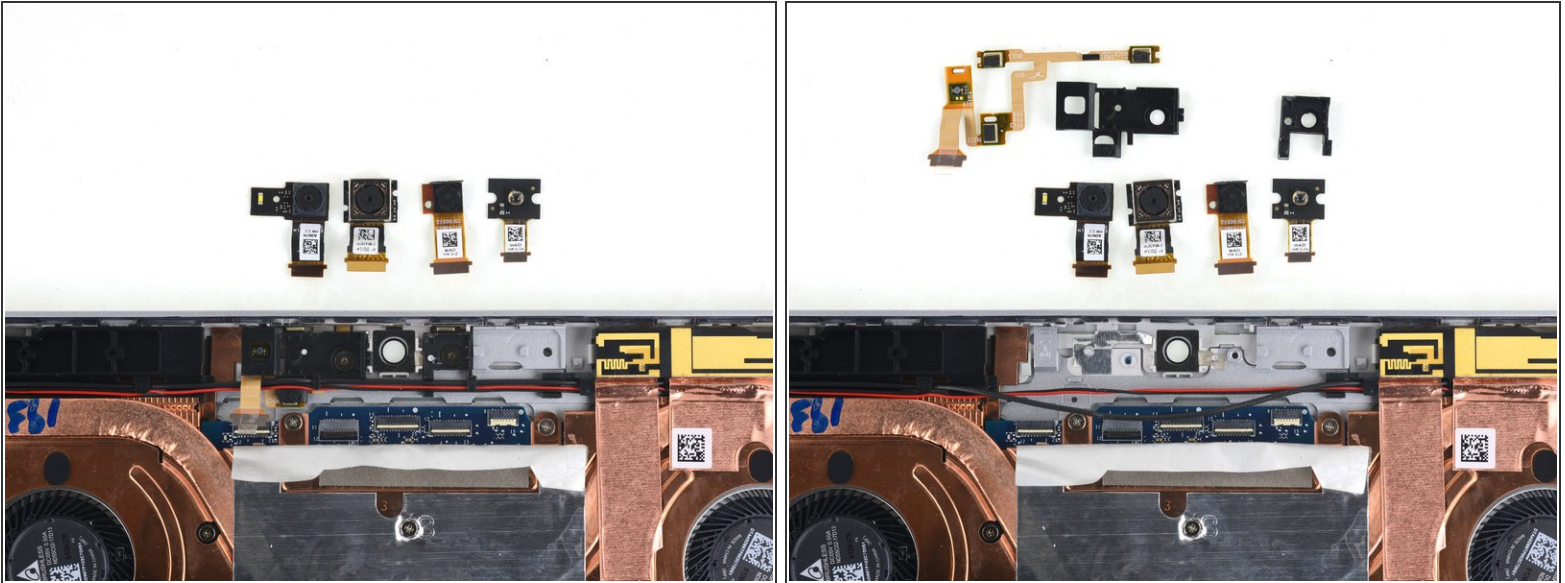
- Four standard Torx screws under the kickstand secure the display through the rear of the tablet.
- The display also has two cables connecting it to the motherboard, but they disconnected themselves upon opening, hopefully without damage—despite the fact that they were taped down. Maybe the repair manual will help, or maybe these cables need a smidge more slack.
- The display is out first, which is good news for a mobile device. The screen is a high priority component and should be easily replaceable.
- The display and digitizer are fused, which makes opening slightly easier, but makes the replacement part more expensive.
- That said, the only additional component mounted to the display is a board that can easily be swapped to a new display. Replacements should be fairly quick.

Step 3



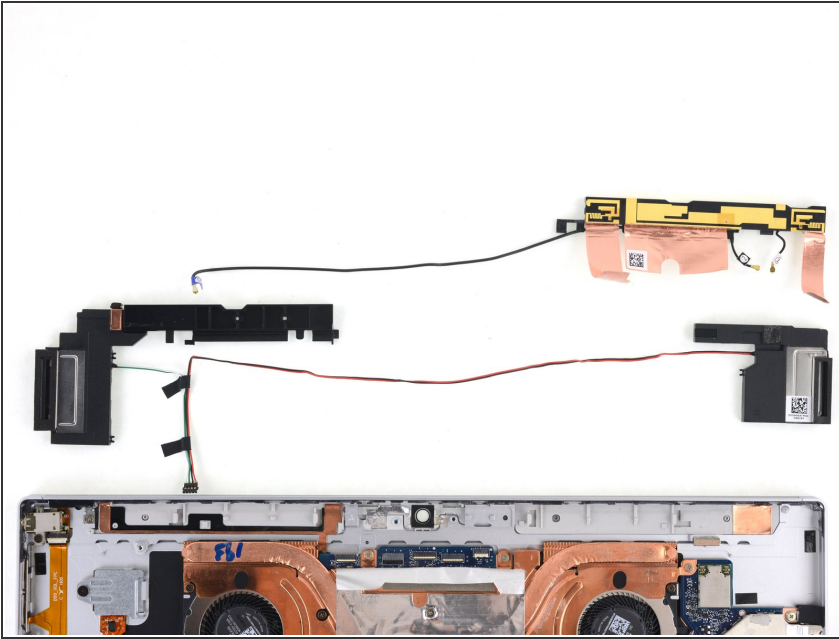
- The construction is fairly flat. Many components are immediately accessible, including:
 - The battery, secured by a few Phillips screws, and no adhesive. Repairability win! You do need to disconnect and peel up a cable though, which is silly.
 - The SSD and wireless card, secured by single screws.
 - A couple tiny random interconnect boards. Modularity is good, but lots of small components can complicate repair.
- The headphone jack is not replaceable, despite that enticing screw.
- Interestingly, this tablet has a SIM tray plug that can't be removed from the outside of the device (no spring mechanism). So be sure to pop that out from the inside before removing the motherboard?

Step 4



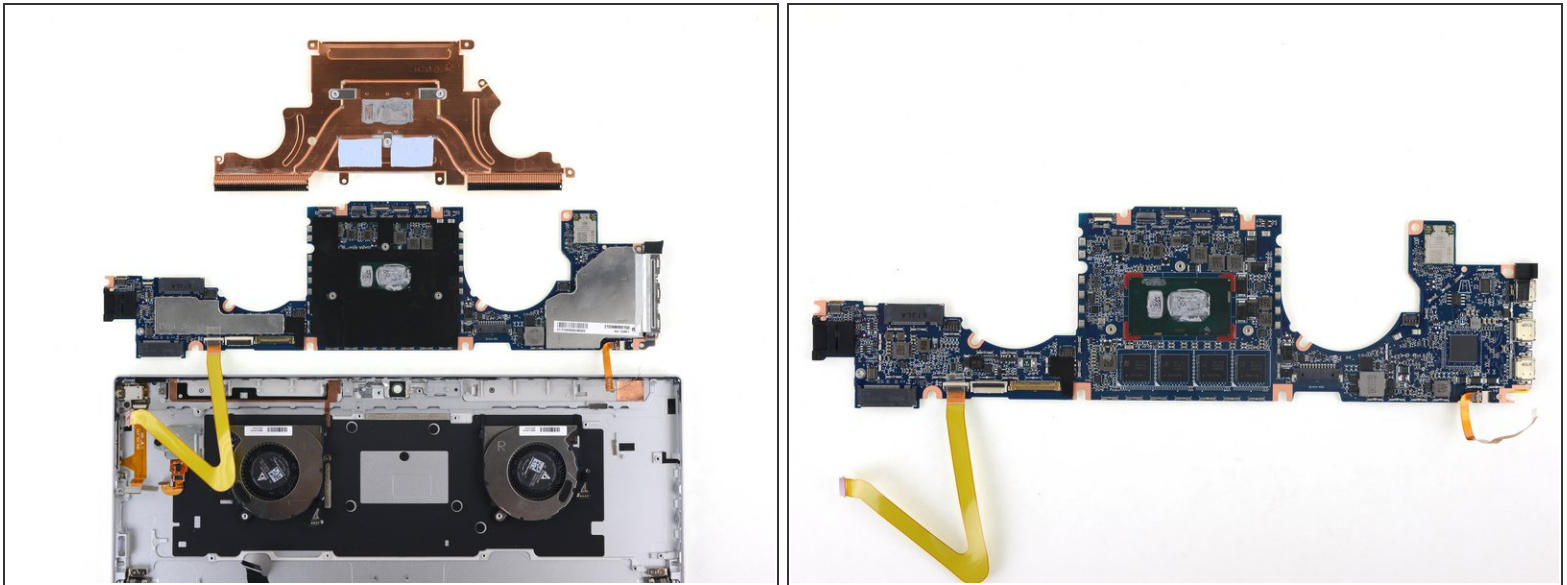
- Unlike the EliteBook x360, the upper sensor components are modularly replaceable!
- The three cameras and the IR blaster are immediately removable.
- Under those cameras are a couple of brackets secured by screws. They route a couple antenna/speaker cables and cover a three-microphone cable that's lightly adhered to the rear case.
- The microphone cable connector is routed over the speaker cables, and is taped over, which seems unnecessary.

Step 5



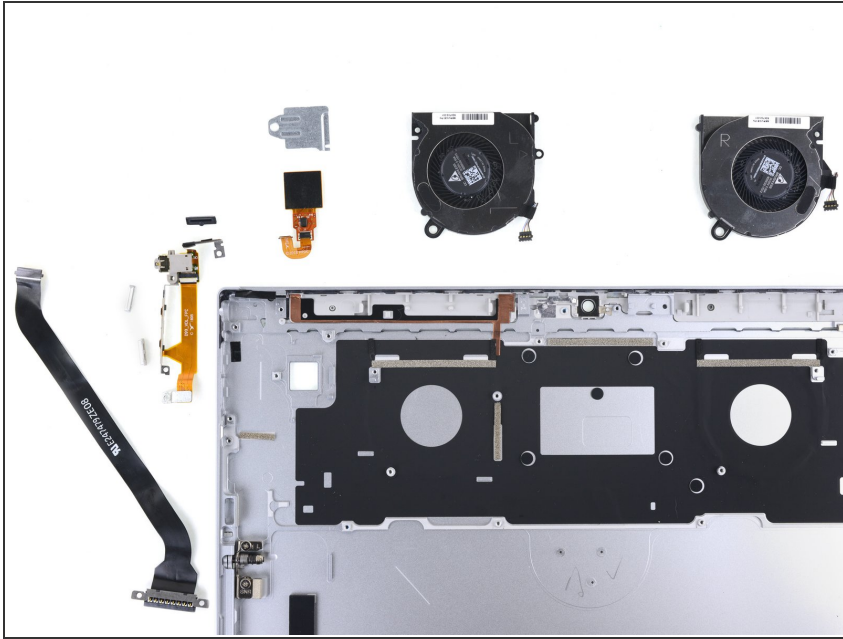
- The speakers are accessible from the outset, but the process is no fun:
 - Peel up the copper tape soldered to the antenna assembly.
 - Peel up the tape attaching both sets of wires to the rear case.
 - Disconnect all the connectors (the antenna interconnect cables are nicely labeled).
 - Carefully pry the speakers off the adhesive holding them to the rear case, and similarly pry to detach the antenna portion of the assembly.
- Both speakers are on the same assembly, increasing repair costs.
- In the event of antenna assembly replacement, the copper would likely need to be ripped off of the old unit and adhered to the new unit, without damage, in order to maintain the same shielding abilities.

Step 6



- The motherboard can be removed after the battery. It requires peeling up the antenna assembly copper tape, disconnecting some connectors, and removing one of those interconnect boards. Replacement would also require removing and transferring the interconnect cables.
- The heatsink assembly is actually clipped onto the motherboard, in addition to a couple screws. The process isn't too difficult, but removal does endanger the board a bit.
- Unfortunately for repairability, the three USB-C ports are soldered to the motherboard, making replacement of these high-wear components much more difficult.
- The motherboard also contains soldered RAM and processor, eliminating the chance for future upgrades of those components.

Step 7



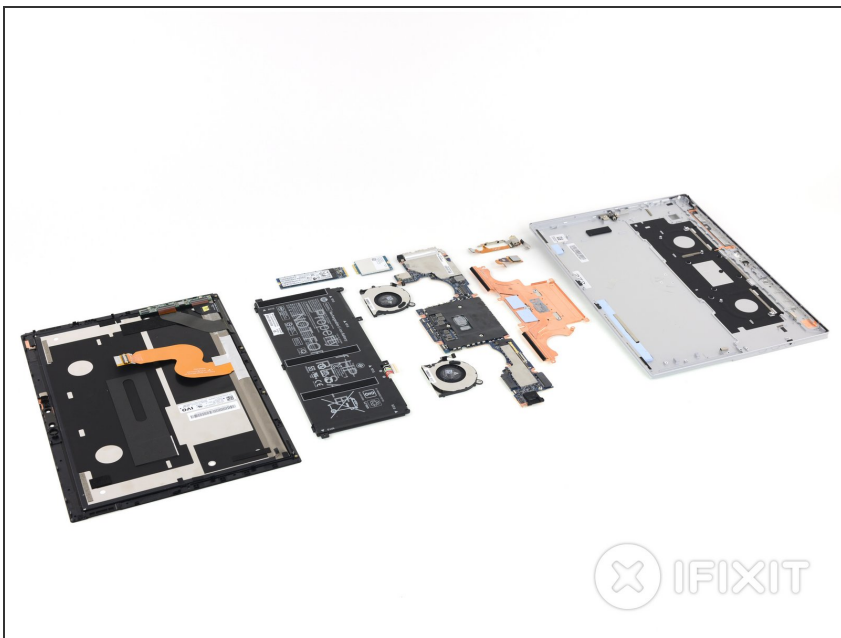
- After the motherboard is removed, the rest of the items in the rear case are accessible including:
 - The fans, which could be cleaned upon opening, but not removed until after the motherboard.
 - The fingerprint sensor, after its bracket is removed.
 - The dock port and cable, which is adhered to the back.
 - The headphone jack and button cable is well adhered, thin and hard to remove without damage. The various brackets would also need to be transferred to a new part.
 - The button covers are the last items out of the case.

Step 8



- The hinges are replaceable once the rear case and the kickstand screws are removed. This can be done immediately upon opening the device.
- The hinges are a high-wear component and should be easily removable, and they are!

Step 9



- That's it for the bits, now on to the score!

Step 10 — Final Thoughts

REPAIRABILITY SCORE:



- HP Elite x2 1013 G3 Repairability Score: **9 out of 10** (10 is the easiest to repair):
 - All screws are standard Torx or Phillips.
 - Easy access to repair documentation and replacement parts by HP makes self-repair more feasible.
 - A modular and flat construction allows access to most components, but layering issues and excessive adhesive make the process less straightforward.
 - The flash storage can be easily upgraded or replaced, but the RAM is soldered to the motherboard—not really expected in a tablet, but still a bummer.
 - The display is fused to the front panel, simplifying repair but increasing the cost of an LCD or front glass replacement.