

RAZER™
LACHESIS™
high precision Laser gaming mouse

MASTER GUIDE

CONTENTS

- 01 Introduction
- 02 Package Contents
- 03 System Requirements
- 04 Installation / Registration / Technical Support
- 06 Key Features
- 08 Configuring Your Razer Lachesis™
- 12 Using Your Razer Lachesis™
- 14 Advanced Setting Guide
- 14 Safety And Maintenance
- 16 Legalese
- 18 FCC Declaration of Conformance
- 19 WEEE information



Congratulations on purchasing your very own Razer Lachesis™. With its unprecedented true 4000dpi laser sensor, the Razer Lachesis™ marks yet another revolution in the history of computer gaming.

Strike terror in your opponents with this fraggin' weapon, engineered for flawless execution at lightning-fast speeds. Move in for the kill now – Victory beckons.

the silent assassin™

It moves in stealth; but strikes with haste. With its unprecedented true 4000dpi laser sensor, the Razer Lachesis™ gaming mouse marks yet another revolution in the history of computer gaming.

Strike terror in your opponents with this silent assassin, engineered for flawless execution at lightning-fast speeds. Add 32KB of onboard memory, nine programmable Hyperresponse™ buttons, as well as an impressive 1000Hz Ultrapolling™ with 1ms response time, and you've got a formidable force on your side.

This fraggin' weapon simply knows no rules and takes no hostages. So move in for the kill now – victory beckons.

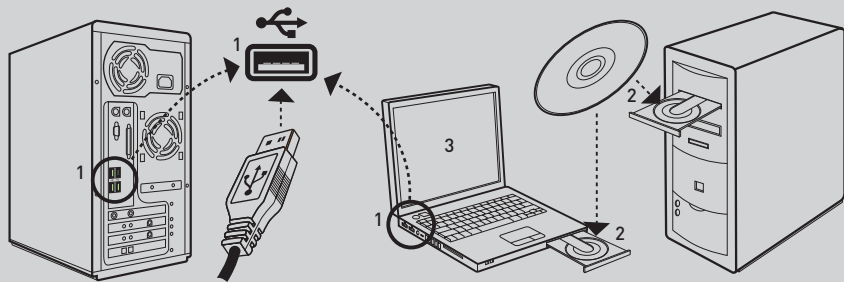
package contents

- Razer Lachesis™ Gaming Mouse
- Quick Start Guide
- Master Guide with Driver CD
- Certificate of Authenticity
- Product Postcard
- Catalogue
- Sticker

system requirements

- PC with built-in USB port
- Windows® XP / x64 / VISTA / VISTA64
- CD-ROM drive
- 35MB free hard disk space

INSTALLATION / REGISTRATION / TECHNICAL SUPPORT



Windows® XP / x64 / Vista / Vista64 Installation Instructions

1. Plug mouse into the USB port of your computer.
2. Insert the Razer™ driver CD into your CD-ROM drive.
3. The Razer Lachesis™ setup screen appears. Click NEXT.
4. Read the license agreement. Click YES if you accept all terms of the agreement.
5. Select the destination folder where the driver software will reside. Click NEXT.
6. Select the program folder for the Razer™ menu. Click NEXT.

7. Review your settings. Click NEXT and installation will begin.
8. When the installation is complete, follow the instructions onscreen to restart your computer. Click FINISH.

REGISTER YOUR RAZER LACHESIS™

At the end of the Razer™ software installation, just follow the prompts onscreen or get instant gratification at www.razerzone.com/registration/.

What you'll get:

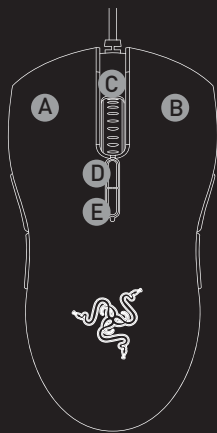
- Two years' limited manufacturer's warranty
- Free online support

TECHNICAL SUPPORT

For technical support and the latest drivers and firmware, please visit www.razersupport.com.

KEY FEATURES

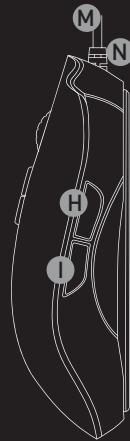
Default button assignments



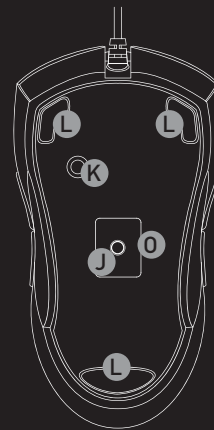
- A Mouse button 1 - Left click
- B Mouse button 2 - Right click
- C Mouse button 3 - Scroll wheel and button
- D Mouse button 8 - DPI up
- E Mouse button 9 - DPI down



- F Mouse button 4 - Forward (Windows Button 5)
- G Mouse button 5 - Backward (Windows Button 4)



- H Mouse button 6 - Profile up
- I Mouse button 7 - Profile down



- J Razer Precision™ Laser sensor
- K Profile change
- L Ultraslick™ Teflon® feet
- M 1000Hz (1ms) response time
- N 16-bit ultra-wide data path
- O Razer Synapse™ onboard memory

CONFIGURING YOUR RAZER LACHESIS™

RAZER SYNAPSE™ ONBOARD FUNCTIONS

MAIN WINDOW

All settings will be saved on the profile selected and will apply on another computer even without the Razer Configurator installed. [Note: On-The-Fly Sensitivity™ requires the Razer Lachesis™ driver to be installed]



Button Assignment

Assigns various functions to buttons. If the button function is not listed, or if you would like to assign a macro, select **ADVANCED FUNCTIONS** from the dropdown menu. Macros can be up to eight characters in length, and other tasks such as media functions can be assigned.

Polling Rate

Sets the polling rate to: 125Hz (8ms), 500Hz (2ms) or 1000Hz (1ms). Note that any change to the polling rate will only take effect after you reboot your computer.

Adjustable DPI Switcher

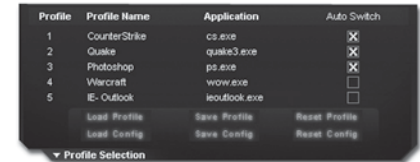
Comes with five default DPI settings: 500, 1000, 1500, 2000 or 4000dpi. Adjustment can be made on the five DPI settings by moving the knob on the slider. Click on the DPI value to set the current DPI of your Razer Lachesis™. You can also program DPI switching to any button on the Razer Lachesis™ (E.g. Program mouse button 4 to 3000dpi, mouse button 5 to 2000dpi). Note that any adjustment of the DPI settings on the slider is reflected across all Profiles.

Light Options

Turns on/off the indicator light on the scroll wheel and snake logo.

Profile Selection Tab

Changes the currently active profile. Click **PROFILE SELECTION** and choose the desired profile from the menu.



- Profile: Indicates the profile number
- Profile Name: Double-click this field to enter a profile name of your choice.
- Application: Double-click this field to open up directory browsing. Select the executable file of the program you want the profile to be tied to.
- Auto Switch: Check this to activate the current profile as an On-The-Fly profile.
- Load/Save/Reset Profile: Click each button to customize your profiles accordingly.
- Load/Save/Reset Config: Click each button to customize your Config.

Note: 'Profile' refers to individual profiles, while 'Config' refers to all five profiles.

DRIVER FEATURES

(Not applicable to Razer Synapse™)

The features listed here require the Razer Configurator to be installed and the Razer Configurator Tray Icon to be active. Each setting will be saved to the current Profile on the current machine only.

Auto Switching Override

Check this option to override all enabled Auto Switching Profiles in the Profile Settings Menu.

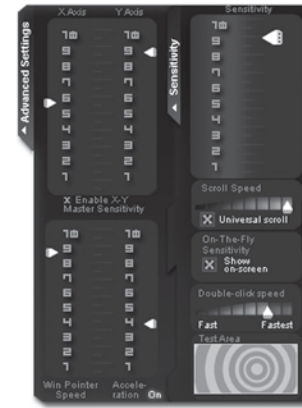
Enable Onscreen Display

Check this option to view visual changes such as the text "Profile 1" on screen when Profile 1 is activated.

System Tray Default

Check this option to load the Razer Lachesis™ Configurator when double-clicking the system tray icon.

Sensitivity Options



Sensitivity Options

Adjusts pointer sensitivity.

Scroll Speed

Adjusts scroll wheel speed.

Universal Scroll

Clicking the middle mouse button and dragging the Razer Lachesis™ in one direction will enable scrolling in the same direction.

On-The-Fly Sensitivity™

Shows On-The-Fly Sensitivity™ onscreen when active. Activate this feature in the Button Assignment section.

Double-Click Speed

Adjusts double-click speed.

Advanced Settings Tab

X/Y Master Sensitivity Control

Adjusts X/Y sensitivity levels.

Enable X-Y Master Sensitivity

Check this option to enable individual adjustments to X-Y sensitivity levels.

Windows® Pointer Speed

Adjusts Windows® pointer speed (as per Windows® Mouse Control Panel). The adjustment will take effect only after reboot.

Acceleration

Turns pointer acceleration on/off and adjusts acceleration level. Note that acceleration is not recommended for gaming.

USING YOUR RAZER LACHESIS™

All Razer Synapse™ settings on your Razer Lachesis™ will be available on any PC, even without the software drivers installed.

SWITCHING DPI

You can switch between DPI in three ways:

- By selecting the desired DPI in the Razer Lachesis™ software driver.
- By assigning the function to a button via the Razer Configurator in the main window.
- By cycling through the DPI settings using the default DPI buttons.

MAKING MACROS

A macro is a short sequence of keystrokes. You can make a macro by following the instructions below.

- Load the Razer Configurator.
- Choose a mouse button and select Advanced Functions from its dropdown menu.
- Click on the Macro button in the Advanced Functions panel.
- Type in the desired sequence of keystrokes. You can also include delays by clicking on "INSERT DELAY (50ms)"
- Click APPLY when done.

SWITCHING PROFILES

You can switch between profiles in three ways:

- By selecting the active profile in the Razer Lachesis™ software driver.
- By assigning the function to a button via the Razer Configurator in the main window.
- By using the Profile button located at the bottom of the mouse. Pressing the Profile button will advance one Profile.

Example 1: Selecting Profile 5 to be activated upon loading of Program A

- Open up the Razer Lachesis™ Driver Control.
- Click on the Profile Selection tab.
- Select Profile 5.
- Under Profile Name, double-click the field to enter name for the profile.
- Under Application, double-click to open up the directory browser to locate the executable file for Program A.
- Check the auto-switching option for Profile 5 to activate auto-switching.
- Click OK.

When the active profile is switched, the Razer Lachesis™ will flash the corresponding number of times – For example, if Profile 3 is activated, the mouse will flash three times to indicate the profile you have selected.

It will record the currently-active Profile even if turned off and will boot up in the active Profile.

ON-THE-FLY SENSITIVITY™

If "On-The-Fly Sensitivity™" has been assigned to a button, pressing that assigned button and moving the scroll wheel will produce a bar at the lower right-hand corner of your screen, allowing you to dynamically adjust your sensitivity settings. This feature requires the driver to be installed.

DRIVER AND FIRMWARE UPDATES

You'll be able to update the Razer™ driver software and firmware by clicking UPDATE in the upper right hand corner of the panel. This will connect you to www.razerzone.com for the latest driver and firmware downloads.

RESTORING FACTORY DEFAULT SETTINGS

To reset the Razer Lachesis™ to factory default settings, press and hold the Profile Button for 10 seconds while the Razer Lachesis™ is connected to a powered-on computer.

advanced settings guide

Sensitivity

Mouse sensitivity is an internal filter of the driver. The maximum sensitivity setting of 10 is unfiltered. Each incremental stop or setting is a 10% decrease, i.e. Setting 1 will decrease mouse pointer input to 10% (i.e. a linear graph).

Acceleration

Acceleration is an internal filter of the driver, and is primarily a legacy option for low dpi mice users. With acceleration enabled, how fast you swipe the mouse will translate to a corresponding increase in movement onscreen. Windows® XP has acceleration turned on by default as a convenience for users. However, this is on the assumption that everyone uses 400dpi mice, so this will likely be a hindrance to most gamers and precision users who require greater accuracy. The 'acceleration off' option (default) turns off internal acceleration only and does not affect Windows® XP acceleration, which can be turned off via the Control Panel → Mouse → Pointer Options, and unselecting the 'Enhance Pointer Precision' option.

Windows® Pointer Speed

Pointer speed refers to the Windows® implementation of sensitivity. In Windows® XP, a setting of '5' means there is no filtering (default). This section has been included for user convenience.

DPI Switcher – Resolution

Resolution refers to the number of counts per inch of movement sent by the mouse hardware to the OS. E.g. 500dpi means that a movement of one inch will result in 500 counts of movement. Without any of the above filters operating, this will result in 500 pixels of movement on the screen.

Independent X- and Y-Axis Settings

You can preset the X-axis (horizontal) and Y-axis (vertical) sensitivity levels independently. When this feature is enabled, a new on-the-fly interface bar will appear onscreen to allow further sensitivity adjustments.

safety and maintenance

Safety Guidelines

In order to achieve maximum safety while using your Razer Lachesis™, we suggest that you adopt the following guidelines:

1. Avoid looking directly at the laser beam of your Razer Lachesis™ or pointing the beam in anyone else's eye. Note that the laser beam is NOT visible to the naked human eye and is set on an Always-On™ mode.
2. Should you have trouble operating the mouse and troubleshooting does not work, unplug the device and call the Razer™ hotline or go to www.razerzone.com for technical support. Do not attempt to service or fix the device yourself at any time.

3. Do not take mouse apart (doing so will void your warranty) and do not attempt to service it yourself or operate it under abnormal current loads.
4. Keep mouse away from liquid, humidity or moisture. Operate it only within the specified temperature range of 0°C(32°F) to 40°C(104°F). Should you operate it in a temperature that is beyond this range, unplug and switch off the device to let the temperature stabilize within the optimal temperature range.

COMFORT

Research has shown that long periods of repetitive motion, improper positioning of your computer peripherals, incorrect body position, and poor habits may be associated with physical discomfort and injury to nerves, tendons, and muscles. Below are some guidelines to avoid injury and ensure optimum comfort while using your Razer Lachesis™.

1. Position your keyboard and monitor directly in front of you with your mouse next to it. Place your elbows next to your side, not too far away, and with your mouse within easy reach.
2. Adjust the height of your chair and table so that your keyboard and mouse are at or below elbow height.
3. Keep your feet well supported, posture straight and your shoulders relaxed.

4. During gameplay, relax your wrist and keep it straight. If you do the same tasks with your hands repeatedly, try not to bend, extend or twist your hands for long periods.
5. Do not rest your wrists on hard surfaces for long periods. Use a wrist support such as the gel-filled Razer eXactRest™ to support your wrist while gaming.
6. Customize the buttons on your Razer Lachesis™ to suit your style of gaming in order to minimize repetitive or awkward motions while gaming.
7. Make sure that your Razer Lachesis™ fits comfortably in your hands.
8. Do not sit in the same position all day. Get up, step away from your desk and do exercises to stretch your arms, shoulders, neck and legs.
9. If you should experience any physical discomfort while using your Razer Lachesis™, such as pain, numbness, or tingling in your hands, wrists, elbows, shoulders, neck or back, please consult a qualified medical doctor immediately.

MAINTENANCE AND USE

The Razer Lachesis™ is equipped with a laser sensor, which has a tracking beam that is invisible to the naked human eye. There is a little regular maintenance required to keep it in optimum condition. Once a month we recommend you unplug your Razer Lachesis™

from the USB port and clean the lens underneath with a soft cloth or cotton swab. Use a little warm water but no soap or harsh cleaning agents.

To get the ultimate experience in movement and control, we highly recommend a premium mousing surface from Razer. Some surfaces will cause undue wear on the feet requiring constant wear and eventual replacement.

Please note that the sensor of Razer Lachesis™ is 'tuned' or optimized especially for Razer™ mousing surfaces. This means that the sensor has been tested extensively to confirm that the Razer Lachesis™ reads and tracks best on Razer™ mousing surfaces. Other premium mousing surfaces from companies like Everglide™ may work just as well.

LEGALESE

COPYRIGHT INFORMATION

©2007 Razer USA Ltd. All Rights Reserved. Razer™, the Razer Triple-Headed Snake logo, the Razer distressed word logo, Lachesis™ and other trademarks contained herein are the property of Razer USA Ltd and/or its affiliated or associated companies, registered in the United States or other countries. Actual product may differ from pictures.

Razer™ assumes no responsibility for any errors that may appear in this manual or help file. Information contained herein is subject to change without notice.

Razer™ may have patents, patent applications, trademarks, copyrights, trade secrets or other property rights, intellectual and otherwise concerning the product and subject matter in this manual. Except as is provided in any written license agreement provided by Razer™, furnishing of this manual does not give you a license to any such patents, trademarks, copyrights or other intellectual property rights, whether registered or otherwise. Patent Pending.

SOFTWARE LICENSE AGREEMENT ('AGREEMENT')

Razer™ IS WILLING TO LICENSE THE ENCLOSED SOFTWARE TO YOU ONLY ON THE CONDITION THAT YOU ACCEPT ALL OF THE TERMS CONTAINED IN THIS LICENSE AGREEMENT. This is a legal agreement between you (either an individual end-user, corporate entity or any other entity whatsoever) and Razer™. By installing, uploading, copying or utilizing in any way the software, you are agreeing to be bound by the terms and conditions of this Agreement. If you do not agree to the terms of this Agreement, do not install the software and promptly return the software package and other items that are part of this product in their original package with your payment receipt to your point of purchase for a full refund.

GRANT OF LICENSE

Razer™ grants you a non-exclusive, revocable license to use one copy of the enclosed software program, licensed and not sold to you,

("Software") on one computer only with the Razer™ product you have purchased. No other rights are granted. The Software is in use if it is installed, including but not limited to loaded on the computer's permanent or temporary memory. For backup purposes only, you may make one copy of the Software for your own use. You must include on the backup copy all copyright and other notices included in the Software as supplied by Razer™. Installation on a network server for the sole purpose of your internal distribution of the Software is permitted only if you have purchased an individual Software package or concurrent dedicated license for each networked computer to which the Software is distributed.

RESTRICTIONS

Razer™ retains full ownership of the Software. You shall not directly and/or indirectly attempt to decompile, disassemble, reverse-engineer, or modify the Software licensed to you in any way except as allowed by law. You may not transmit the Software over a network (except as expressly permitted above) or electronically using any means. You may not directly and/or indirectly transfer the Software except upon a permanent transfer of the enclosed Razer™ product provided that all Software updates are included in the transfer, you do not retain a copy of the Software, and the transferee agrees to be bound by the terms and conditions in this license. Upon any violation of any of the provisions of the Agreement, your rights to use

the software shall automatically terminate and all copies of the Software must be returned to Razer™ or destroyed.

LIMITATION OF LIABILITY

The warranties set forth in this agreement replace and/or supersede all other warranties and your remedies for breach of warranty are expressly limited to those herein set forth. Razer™ expressly disclaims all other warranties to the extent allowed by law including, but not limited to, the implied warranties of merchantability, fitness for a particular purpose and non-infringement of third-party rights with respect to the documentation, software (including patches and/or updates) and hardware. No Razer™ supplier, dealer, agent, or employee is authorized to make any modification, extension or alteration of the warranty or to substitute products or services, lost profits, loss of information or data, or any other special, indirect, consequential or incidental damages arising in any way out of the distribution of, sale of, resale of, use of, or inability to use any product or software subject to warranty herein set forth. In no event will Razer™ be liable for any special, incidental, indirect or consequential damages whatsoever.

COSTS OF PROCUREMENT PRODUCT OR SERVICE

For the avoidance of doubt, in no event will Razer™ be liable for any costs of procurement

unless it has been advised of the possibility of such damages, and in no case shall Razer™ be liable for any costs of procurements liability exceeding the actual money paid for the products subject to warranty at issue.

In the event some jurisdictions do not allow the limitation of implied warranties or liability for incidental, consequential, special, or indirect damages, the above limitation may not apply. The above limitations will not apply in case of personal injury where and to the extent that applicable laws require such liability.

U.S. GOVERNMENT RESTRICTED RIGHTS

The Software is provided to the U.S. government only with restricted rights and limited rights. Use, duplication, or disclosure by the U.S. Government is subject to restrictions set forth in 48 C.F.R. 2.101 (October 1995), consisting of "Commercial Computer Software" and "Commercial Computer Software Documentation as such terms are used in 48C.F.R. 12.212 (September 1995), and in FAR Sections 52-227-14 and 52-227-19 r DFARS Section 52-227-7013 ©(1) (ii), or their successors, as applicable. Consistent with 48 C.F.R. 12.512 and 48 C.F.R. 227-7202-1 through 27-7204-4 (June 1995), or any successor regulations, this Software is provided to U.S. Government users pursuant to the terms and conditions herein.

FCC DECLARATION OF CONFORMANCE

FCC DECLARATION OF CONFORMANCE

This equipment has been tested and found to comply with the limits for a Class B digital device, pursuant to part 15 of the FCC Rules. These limits are designed to provide reasonable protection against harmful interference in a residential installation. This equipment generates, uses and can radiate radio frequency energy and, if not installed and used in accordance with the instructions, may cause harmful interference to radio communications. However, there is no guarantee that interference will not occur in a particular installation. If this equipment does cause harmful interference to radio or television reception, which can be determined by turning the equipment off and on, the user is encouraged to try to correct the interference by one or more of the following measures:

Reorient or relocate the receiving antenna.
Increase the separation between the equipment and the receiver.

Connect the equipment into an outlet on a circuit different from that to which the receiver is connected.

Consult the dealer or an experienced radio TV technician for help.

For more information, refer to the online help system on your Razer Lachesis™ CD-ROM or www.razerzone.com.

WEEE INFORMATION



ENGLISH

Correct Disposal of This Product (Waste Electrical & Electronic Equipment)

[Applicable in the European Union and other European countries with separate collection systems]

This marking shown on the product or its literature, indicates that it should not be disposed with other household wastes at the end of its working life. To prevent possible harm to the environment or human health from uncontrolled waste disposal, please separate this from other types of wastes and recycle it responsibly to promote the sustainable reuse of material resources. Household users should contact either the retailer where they purchased this product, or their local government office, for details of where and how they can take this item for environmentally safe recycling. Business users should contact their supplier and check the terms and conditions of the purchase contract. This product should not be mixed with other commercial wastes for disposal.

FRANÇAIS

Comment éliminer ce produit [déchets d'équipements électriques et électroniques]

[Applicable dans les pays de l'Union Européen et aux autres pays européens disposant de systèmes de collecte sélective]

Ce symbole sur le produit ou sa documentation indique qu'il ne doit pas être éliminé en fin de vie avec les autres déchets ménagers. L'élimination incontrôlée des déchets pouvant porter préjudice à l'environnement ou à la santé humaine, veuillez le séparer des autres types de déchets et le recycler de façon responsable. Vous favoriserez ainsi la réutilisation durable des ressources matérielles. Les particuliers sont invités à contacter le distributeur leur ayant vendu le produit ou à se renseigner auprès de leur mairie pour savoir où et comment ils peuvent se débarrasser de ce produit afin qu'il soit recyclé en respectant l'environnement. Les entreprises sont invitées à contacter leurs fournisseurs et à consulter les conditions de leur contrat de vente. Ce produit ne doit pas être éliminé avec les autres déchets commerciaux.

ITALIANO

Corretto smaltimento del prodotto (rifiuti elettrici ed elettronici)

[Applicabile in i paesi dell'Unione Europea e in quelli con sistema di raccolta differenziata]

Il marchio riportato sul prodotto o sulla sua documentazione indica che il prodotto non deve essere smaltito con altri rifiuti domestici al termine del ciclo di vita. Per evitare eventuali danni all'ambiente o alla salute causati dall'inopportuno smaltimento dei rifiuti, si invita l'utente a separare questo prodotto da altri tipi di rifiuti e di riciclarlo in maniera responsabile per favorire il riutilizzo sostenibile delle risorse materiali. Gli utenti domestici sono invitati a contattare il rivenditore presso il quale è stato acquistato il prodotto o l'ufficio locale preposto per tutte le informazioni relative alla raccolta differenziata e al riciclaggio per questo tipo di prodotto. Gli utenti aziendali sono invitati a contattare il proprio fornitore e verificare i termini e le condizioni del contratto di acquisto. Questo prodotto non deve essere smaltito unitamente ad altri rifiuti commerciali.

DEUTSCH

Korrekte Entsorgung dieses Produkts (Elektromüll)

[Anzuwenden in den Ländern der Europäischen Union und anderen europäischen Ländern mit einem separaten Sammelsystem]

Die Kennzeichnung auf dem Produkt bzw. auf der dazugehörigen Literatur gibt an, dass es nach seiner Lebensdauer nicht zusammen mit dem normalen Haushaltsmüll entsorgt werden darf. Entsorgen Sie dieses Gerät bitte getrennt von anderen Abfällen, um der Umwelt bzw. der menschlichen Gesundheit nicht durch unkontrollierte Müllbeseitigung zu schaden. Recyceln Sie das Gerät, um die nachhaltige Wiederverwertung von stofflichen Ressourcen zu fördern. Private Nutzer sollten den Händler, bei dem das Produkt gekauft wurde, oder die zuständigen Behörden kontaktieren, um in Erfahrung zu bringen, wie sie das Gerät auf umweltfreundliche Weise recyceln können. Gewerbliche Nutzer sollten sich an Ihren Lieferanten wenden und die Bedingungen des Verkaufsvertrags konsultieren. Dieses Produkt darf nicht zusammen mit anderem Gewerbemüll entsorgt werden.

ESPAÑOL

Eliminación correcta de este producto [material eléctrico y electrónico de descarte]

[Aplicable en la Unión Europea y en países europeos con sistemas de recogida selectiva de residuos]

La presencia de esta marca en el producto o en el material informativo que lo acompaña, indica que al finalizar su vida útil no deberá eliminarse junto con otros residuos domésticos. Para evitar los posibles daños al medio ambiente o a la salud humana que representa la eliminación incontrolada de residuos, separe este producto de otros tipos de residuos y reciclelo correctamente para promover la reutilización sostenible de recursos materiales. Los usuarios particulares pueden contactar con el establecimiento donde adquirieron el producto, o con las autoridades locales pertinentes, para informarse sobre cómo y dónde pueden llevarlo para que sea sometido a un reciclaje ecológico y seguro. Los usuarios comerciales pueden contactar con su proveedor y consultar las condiciones del contrato de compra. Este producto no debe eliminarse mezclado con otros residuos comerciales.

PORTUGUÊS

Eliminação Correcta Deste Produto [Resíduo de Equipamentos Eléctricos e Electrónicos]

Esta marca, apresentada no produto ou na sua literatura indica que ele não deverá ser eliminado juntamente com os resíduos domésticos indiferenciados no final do seu período de vida útil. Para impedir danos ao ambiente e à saúde humana causados pela eliminação incontrolada de resíduos deverá separar este equipamento de outros tipos de resíduos e reciclá-lo de forma responsável, para promover uma reutilização sustentável dos recursos materiais. Os utilizadores domésticos deverão contactar ou o estabelecimento onde adquiriram este produto ou as entidades oficiais locais para obterem informações sobre onde e de que forma podem levar este produto para permitir efectuar uma reciclagem segura em termos ambientais. Os utilizadores profissionais deverão contactar o seu fornecedor e consultar os termos e condições do contrato de compra. Este produto não deverá ser misturado com outros resíduos comerciais para eliminação.

DANSK

Korrekt affaldsbortskaffelse af dette produkt (elektrisk & elektronisk udstyr)

Mærket på dette produkt eller i den medfølgende dokumentation betyder, at produktet ikke må bortskaffes sammen med almindeligt husholdningsaffald efter endt levetid. For at undgå skadelige miljø- eller sundhedspåvirkninger på grund af ukontrolleret affaldsbortskaffelse skal dette produkt bortskaffes særskilt fra andet affald og indleveres behørigt til fremme for bæredygtigt materialegenvinding. Hjemmebrugere bedes kontakte forhandleren, hvor de har købt produktet, eller den lokale myndighed for oplysning om, hvor og hvordan de kan indlevere produktet med henblik på miljøforsvarlig genvinding. Erhvervsbrugere bedes kontakte leverandøren og læse betingelserne og vilkårene i købekontrakten. Dette produkt bør ikke bortskaffes sammen med andet erhvervsaffald.