



Acer Monitor EI242QR

# **LIFECYCLE EXTENSION GUIDE**

*acer*

---

# Contents

## Table of Contents

<b>Important Safety Notice .....</b>	<b>3</b>
<b>1. Exploded Diagram .....</b>	<b>4</b>
<b>2. Wiring connectivity diagram.....</b>	<b>6</b>
<b>3. Mechanical Instruction .....</b>	<b>7</b>
<b>4. Assembly and Disassembly SOP .....</b>	<b>8</b>
<b>5. Troubleshooting .....</b>	<b>14</b>
<b>6. FRU List .....</b>	<b>16</b>

### Safety Notice

Any person attempting to service this chassis must familiarize with the chassis and be aware of the necessary safety precautions to be used when serving electronic equipment containing high voltage



## Important Safety Notice

### Product Announcement:

This product is certificated to meet RoHS Directive and Lead-Free produced definition. Using approved critical components only is recommended when the situation to replace defective parts. Vender assumes no liability express or implied, arising out of any unauthorized modification of design or replacing non-RoHS parts. Service providers assume all liability.

### Qualified Repairability:

Proper service and repair is important to the safe, reliable operation of all series products. The service providers recommended by vender should being aware of notices listed in this service manual in order to minimize the risk of personal injury when perform service procedures. Furthermore, the possible existed improper repairing method may damage equipment or products. It is recommended that service engineers should have repairing knowledge, experience, as well as appropriate product training per new model before performing the service procedures.

### NOTICE:

! To avoid electrical shocks, the products should be connect to an authorized power cord, and turn off the master power switch each time before removing the AC power cord.

! To prevent the product away from water or exposed in extremely high humidity environment.

! To ensure the continued reliability of this product, use only original manufacturer's specified parts.

! To ensure following safety repairing behavior, put the replaced part on the components side of PWBA, not solder side.

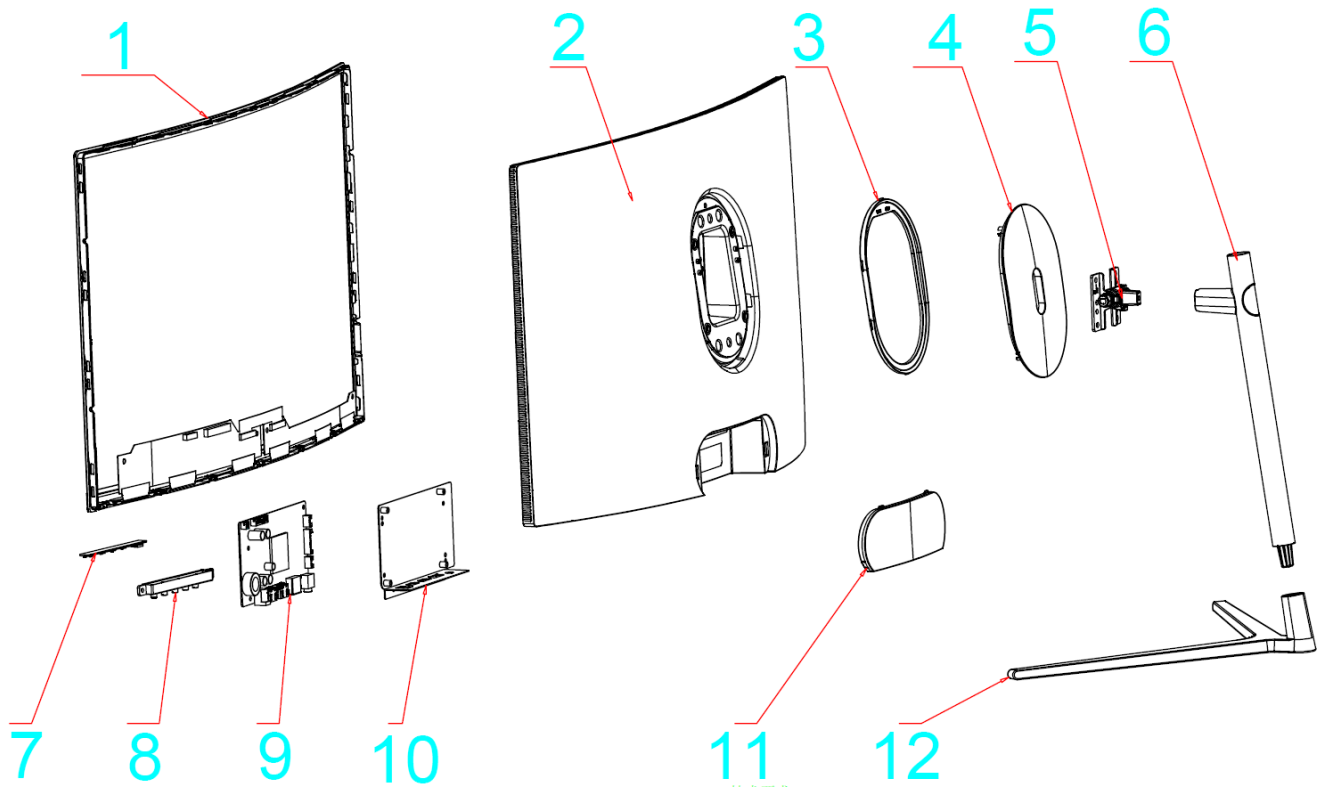
! To ensure using a proper screwdriver, follow the torque and force listed in assembly and disassembly procedures to screw and unscrew screws.

! Using Lead-Free solder to well mounted the parts.

! The fusion point of Lead-Free solder requested in the degree of 220°C.

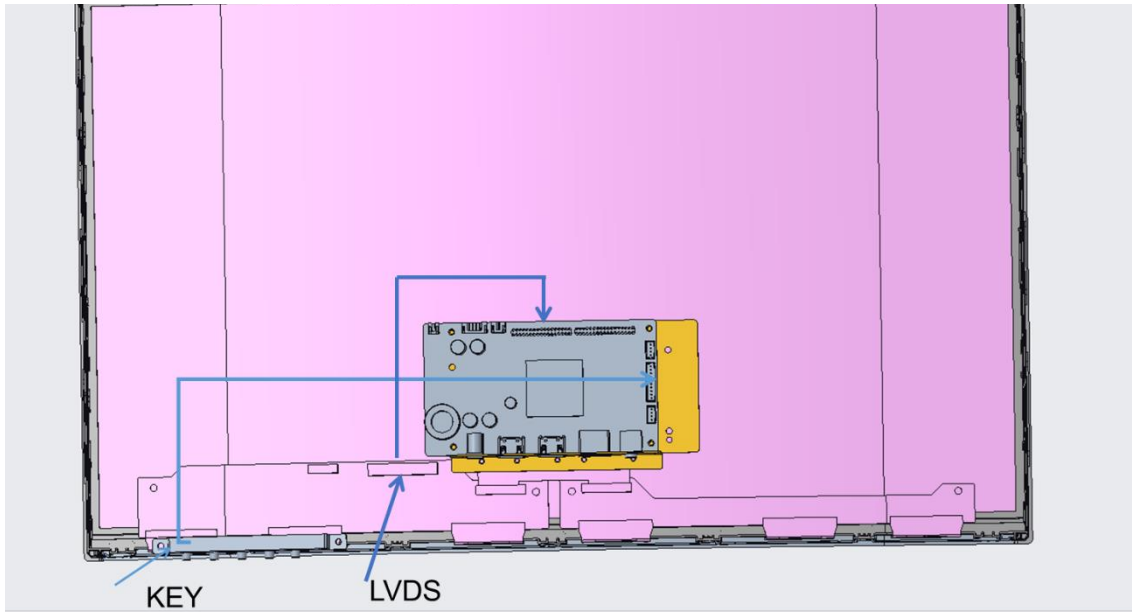
## Exploded Diagram

## 1.1 Product Exploded Diagram



12	101.006.02691	Stand Base	Stand base/SF12	1PCS	
11	101.015.00341	Trim cover	Rear housing trim cover/SF1/ABS/Black/V1	1PCS	
10	101.013.03431	MB Bracket	MB Bracket/24F1/SGCC/T0.6mm/A/0	1PCS	
9	104.001.02461	MB	AD Board J-F9UHD-XA1/91A4/LS/下2H+NI+A+SK/DC12V	1PCS	
8	101.009.00021	KeyBD Bracket	KeyBD Bracket/34C1/ABS/Black	1PCS	
7	104.002.00192	KeyBD	Key BD/4X4X1.7mm/5KEY/LED/ESD	1PCS	
6	101.007.00531	Base Support	Base Support/SF11/铝合金/Black	1PCS	
5	101.021.00491	Hingle Assy	Hingle Assy/SF1/ALU+SGCC/T=2.0/Torque 22KG/	1PCS	
4	101.011.00121	Hingle Cover	Hingle Cover/24F1/ABS/Black	1PCS	
3	101.012.00441	Lamp cover	Lamp cover/24F1/ABS+	1PCS	
2	101.004.00821	Rear Cover	Rear Cover/SF1/ABS/UL94-V1	1PCS	
1	--	LCM	24 Inch LCM Module	1PCS	
No.	PN	Name	Mateiral Description	Qty	备注

## 1. Wiring connectivity diagram



## 2. Mechanical Instruction

### Tools Required

List the type and size of the tools that would typically can be used to disassemble the product to a point where components and materials requiring selective treatment can be removed.

### Tool Description:

- working table
- Screw-driver
- Knife
- glove
- cleaning cloth
- ESD protection

### 3. Assembly and Disassembly SOP

#### *EI242QR*

##### 4.1 Disassembly Procedures

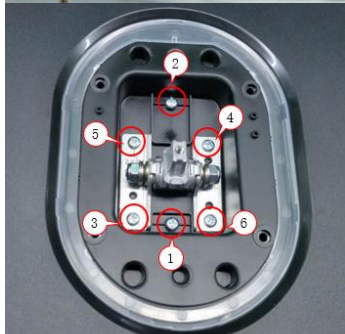
###### Preparation before disassemble

1. Clean the room for disassemble
2. Identify the area for monitor
3. Check the position that the monitors be placed and the quantity of the monitor ;prepare the area for material flow; according to the actual condition plan the disassemble layout
4. Prepare the implement, equipment, materials as bellow:
  - 1) working table
  - 2) Screw-driver
  - 3) knife
  - 4) glove
  - 5) cleaning cloth
  - 6) ESD protection

###### S1

Disassemble the RC, stand

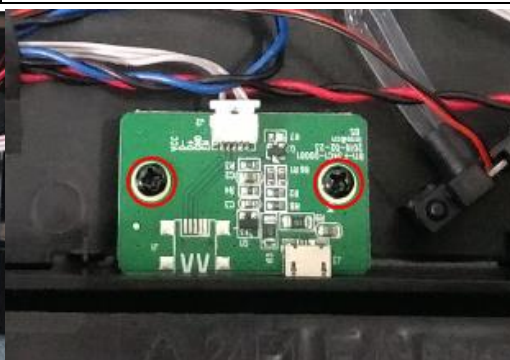
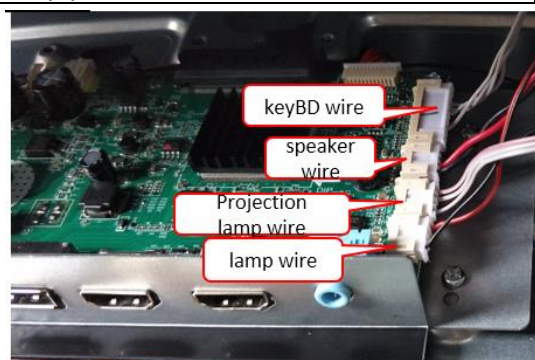
Disassemble base and hinge cover from the RC. Take off the projection lamp, Unlock RC screws. Disassemble RC from monitor



###### S2

Disassemble the cable from the connector , also disassemble the Key BD & projection lamp power BD from the RC.

Disassemble the keyBD wire, lamp wire, speaker cable & Projection lamp wire from the BD connector. Unlock the screw and disassemble the key BD & projection lamp power BD from the RC.



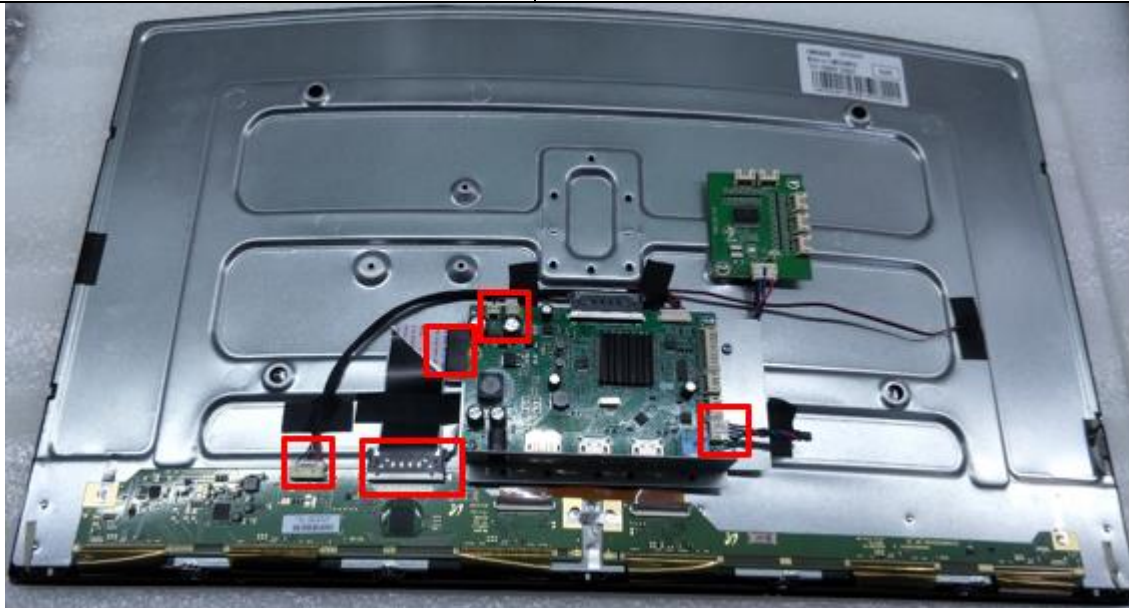


**S3**

Disassemble the cable from the MB

Remove the tape and loosen the cable.

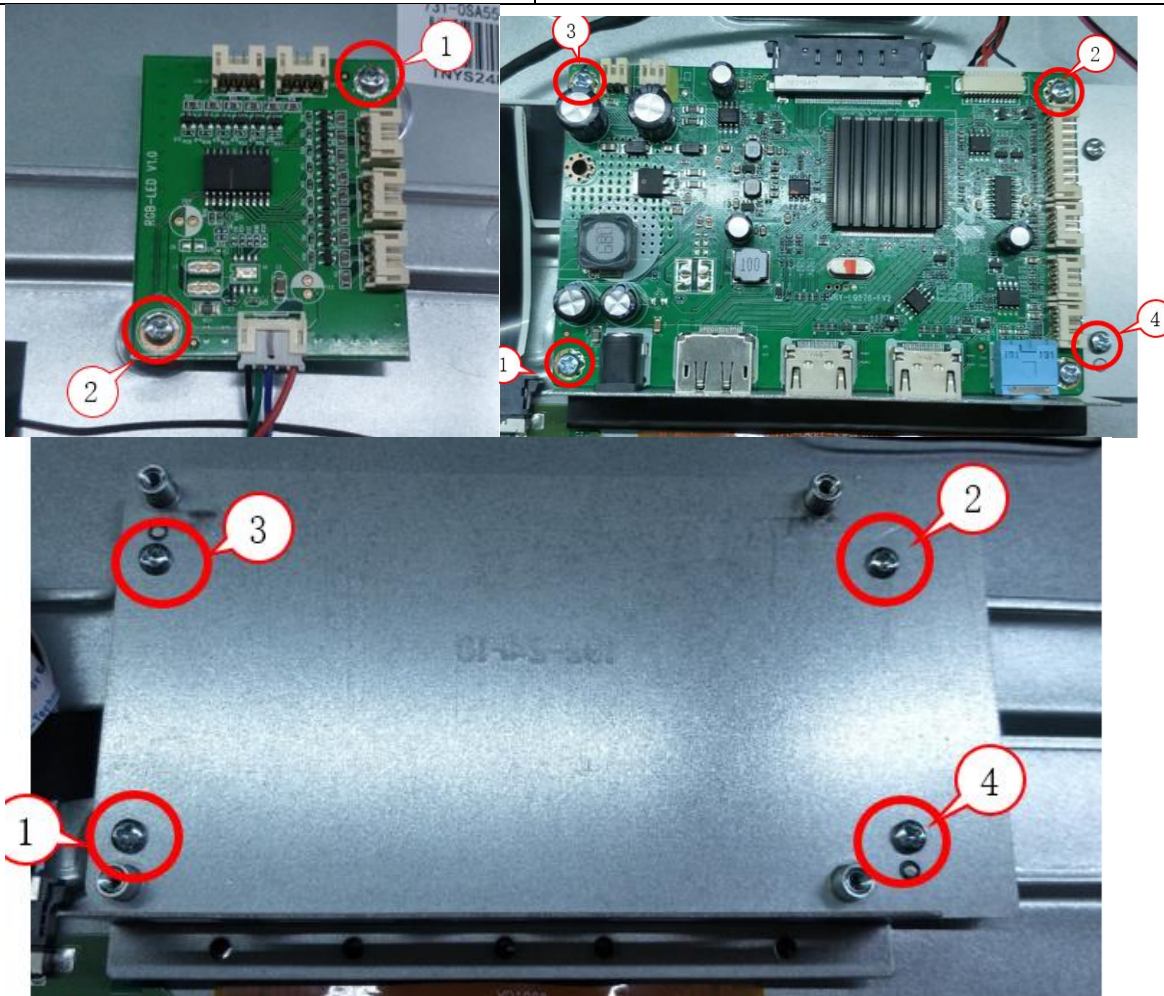
Disassemble the LVDS cable, LED power cable, lamp power cable etc from the MB

**S4**

Disassemble the MB, lamp power BD and MB bracket

Unlock the screw and remove the MB &amp; lamp power BD from the chassis bracket.

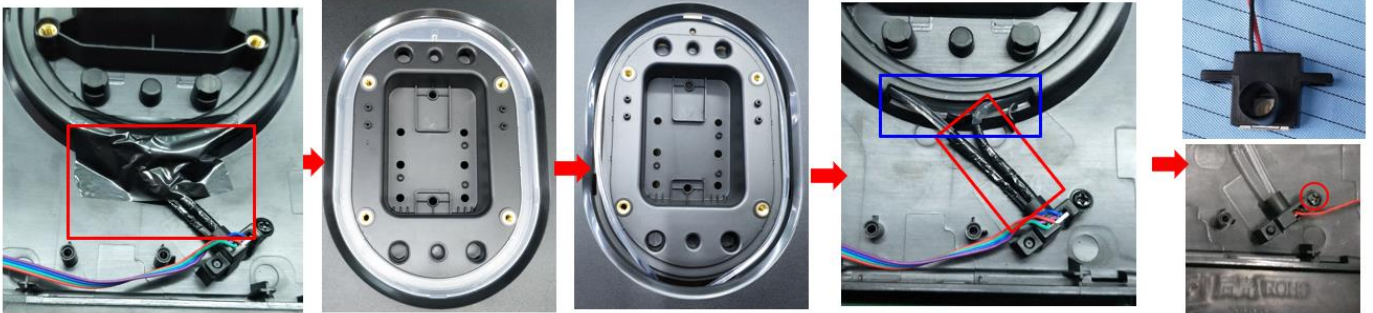
Unlock the screw and disassemble the MB bracket from the chassis.



**S5**

Disassemble the light bar from the RC

Remove the tape from the cable, then disassemble the light bar cover , take the light bar from the groove of the RC, finally unlock the screw and disassemble the plastic bracket



## 4.2 Assembly Procedures

Preparation before assemble:

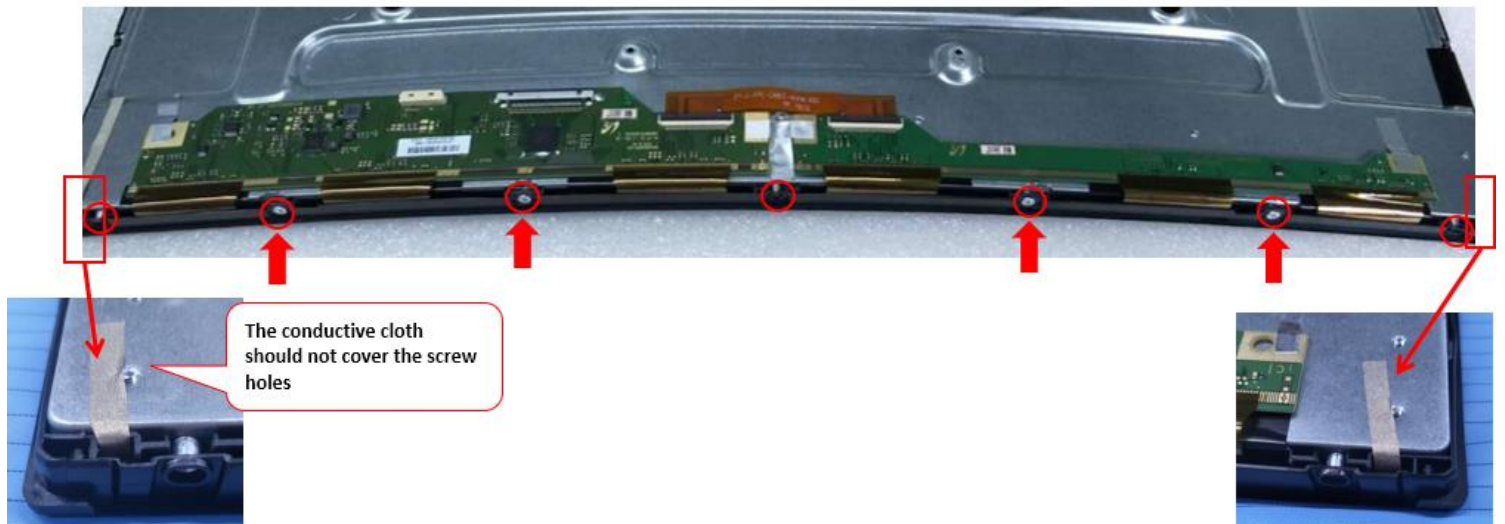
1. Clean the room for work
2. Identify the area for material
3. Prepare the implement, equipment, materials as bellow:
  - 1) working table
  - 2) Screw-driver
  - 3) Knife
  - 4) glove
  - 5) cleaning cloth

ESD protection

S1

Assemble the lower trim part

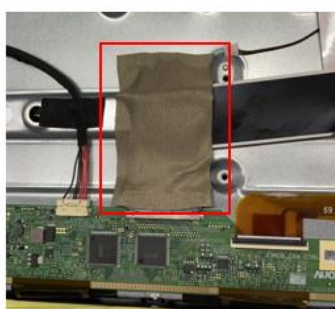
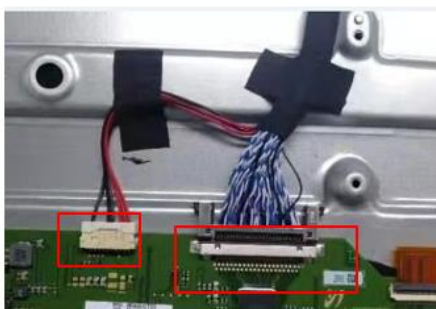
Take a lower trim and stick the conductive cloth and PE foam  
Then fix the lower trim part with screw.



S2

LVDS cable & panel power cable assemble

Insert the LVSD cable & panel power cable into the panel driver BD connector , then use the tape and conductive cloth fix the cable as picture shows .



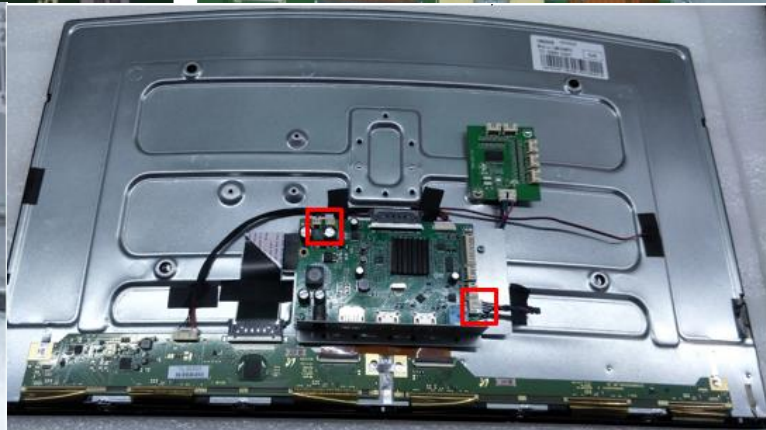
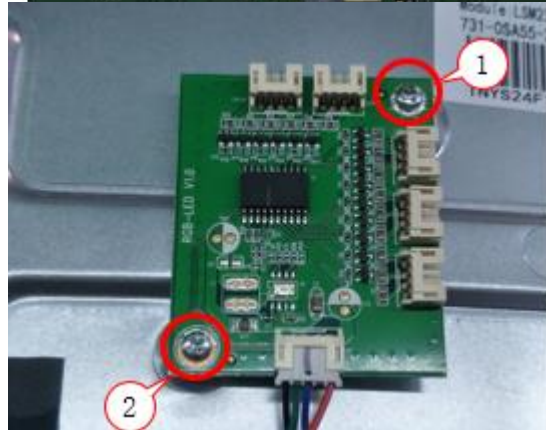
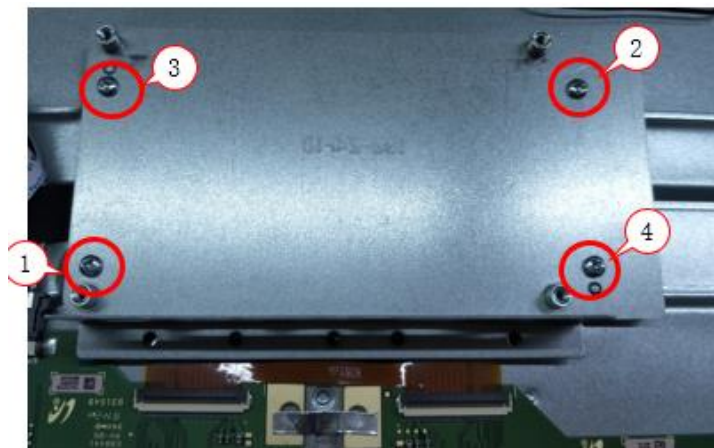
S3

Adhesive the mylar on the MB bracket then fix it with chassis with

Assemble the MB and light bar power BD , and routing the cable

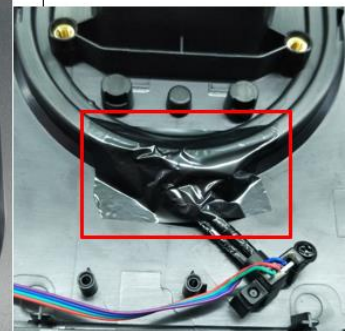
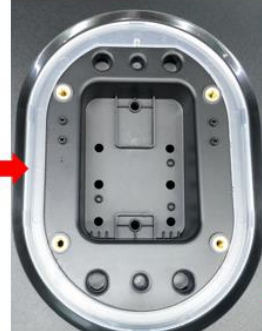
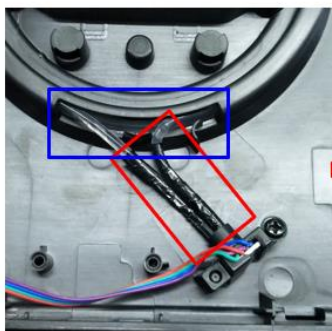
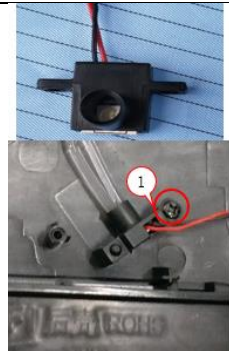
screw, then fix the MB & light bar power BD with screw

Routing the LVSD cable and light bar power cable, panel power cable and fix with tape.



S4  
Light bar assembly

Assemble the light bar with bracket, then insert it into the groove of the RC, fix the light bar cover and mylar cover the naked light bar area.



S5  
Key BD , projection lamp power BD and RC assembly

Assemble the keyBD and bracket and fix with RC with screw

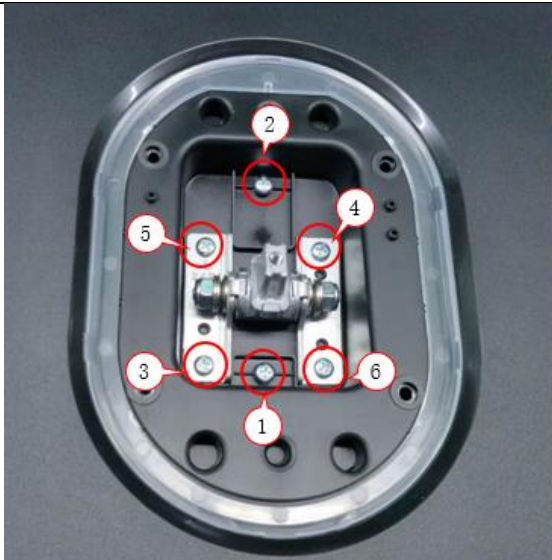
Insert the power cable into projection lamp power BD and fix with screw

Insert the KeyBD wire, speaker wire, projection lamp wire and light bar wire with MB, then assemble the RC.



S5  
Assemble the hinge bracket and the cover, and the projection lamp.

Assemble the hinge bracket and the cover, insert the projection lamp into the RC.



#### 4. Troubleshooting

Problems	Current Status	Remedy
No Picture	Blue	Using OSD, adjust brightness and contrast to maximum or reset to their default settings.
	Blinking Blue	Check if signal cable is properly connected, which can be determined by plugging and unplugging the cable. Check if the PC is functioning properly or in the Hibernate mode. To wake the PC from Sleep mode, you can click the mouse or tap any key on the keyboard.
	LED OFF	Check the power switch. Check if AC power cord is properly connected to the monitor.

## 5. FRU List

This chapter gives you the FRU (Field Replaceable Unit) listing in global configurations of ACER B277. Refer to this chapter whenever ordering for parts to repair or for RMA (Return Merchandise Authorization).

Please note that WHEN ORDERING FRU PARTS, you should check the most up-to-date information available on your regional web or channel. For whatever reasons a part number change is made, it will not be noted on the printed Service Guide. For AUTHORIZED SERVICE PROVIDERS, your office may have a DIFFERENT part number code from those given in the FRU list of this printed Service Guide. You MUST use the local FRU list provided by your regional office to order FRU parts for repair and service of customer machines

NOTE: To scrap or to return the defective parts, you should follow the local government ordinance or regulations on how to dispose it properly, or follow the rules set by your regional office on how to return it.

Category	ACER DESCRIPTION	Description	PART NO.
ADAPTER	ADAPTER 48W 12V 4.0A BLACK		25.TLTMC.001
BOARD	MAIN BOARD 2H+1DP+AUDIO OUT		55.TK0MC.001
BOARD	FUNCTION KEY BOARD		55.THJMC.002
CABLE	CABLE 250mm - PANEL TO MAIN BOARD		50.TK0MC.001
CABLE	FFC CABLE 300mm - FUNCTION KEY BOARD TO MAIN BOARD		50.TK0MC.002
CABLE	HDMI CABLE 1.5M		50.THJMC.003
POWER CORD	POWER CORD 1500mm 10A 250V EU		27.TGWMC.001
POWER CORD	POWER CORD 1500mm 10A 250V UK		27.TFUMC.009
CASE/COVER/BRACKET ASSEMBLY	BACK COVER ASSY		60.TK0MC.001
CASE/COVER/BRACKET ASSEMBLY	BACK DECORATION COVER ASSY		60.TK0MC.002
CASE/COVER/BRACKET ASSEMBLY	LIGHT EFFECT COVER		42.TK0MC.001
CASE/COVER/BRACKET ASSEMBLY	BASE ASSY		60.TK0MC.003
CASE/COVER/BRACKET ASSEMBLY	NECK ASSY		60.TK0MC.004
CASE/COVER/BRACKET ASSEMBLY	HINGE		60.TK0MC.005
CASE/COVER/BRACKET ASSEMBLY	HINGE COVER		60.TK0MC.006
CASE/COVER/BRACKET ASSEMBLY	MAIN BOARD SHIELDING ASSY		33.TK0MC.001
CASE/COVER/BRACKET ASSEMBLY	NECK DECORATION COVER		60.TK0MC.007
LCD	LED LCD Panel HUBEI CENTURY 23.6" FHD None Glare 701.007.27341 LF 250nit 8ms 3000:1 (R1200)(AUO OC)		KL.2360N.005
MISCELLANEOUS	ACETATE TAPE 35*15mm		47.TFUMC.001