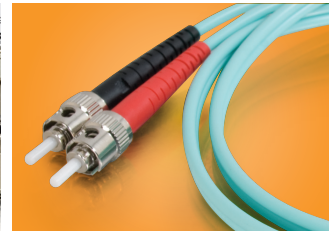
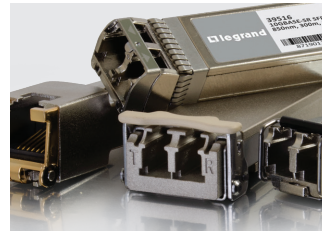
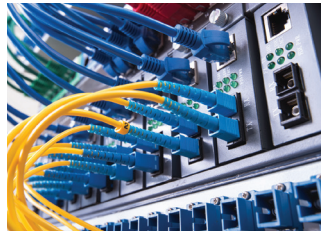


# NETWORKING/ DATACOMM

QUICK SKU FINDER



Simplified Connectivity combines our technical support services, products, and industry leading customer advocacy to create a comprehensive approach to meet all of our customers' connectivity needs. Through our efforts to simplify connectivity, we strive to provide the technical expertise which will inspire confidence before and after the sale, a simple and easy to understand product portfolio, and an effortless experience for all of our customers.

## Technical Expertise

- Pre and post-sale technical support
- In-house resources to assist with any questions, concerns or issues
- 30+ years of experience in the cable industry

## Straightforward Solutions

- High quality products that meet the needs of any data center

## Effortless Experience

- Dedicated support through phone, email and chat
- C2G can fill orders quickly and with faster response times
- One stop shopping from desktop to data center

## Bigger. Faster. Stronger.

Not only does C2G have the largest copper and fiber offering in the IT channel, but our data communications solutions just got bigger with the expansion of our transceiver line. Increased stock in our warehouse and 1 to 3 day lead times on custom drop ships allow for faster delivery to customers. Combined with our lifetime warranty, this makes for a stronger data communications solution that your customers can rely on.





CISCO® TRANSCEIVERS

SKU	Item Description	OEM Equivalent
39468	Cisco DS-SFP-FC8G-SW Compatible 2/4/8Gbs Fibre Channel SW SFP+ Transceiver (MMF, 850nm, 150m, LC)	DS-SFP-FC8G-SW
39515	Cisco GLC-BX-D Compatible 1000Base-BX SFP Transceiver (SMF, 1490nmTx/1310nmRx, 10km, LC, DOM)	GLC-BX-D
39514	Cisco GLC-BX-U Compatible 1000Base-BX SFP Transceiver (SMF, 1310nmTx/1490nmRx, 10km, LC, DOM)	GLC-BX-U
39488	Cisco GLC-EX-SMD Compatible 1000Base-EX SFP Transceiver (SMF, 1310nm, 40km, LC, DOM)	GLC-EX-SMD
39522	Cisco GLC-FE-100FX Compatible 100Base-FX SFP Transceiver (MMF, 1310nm, 2km, LC)	GLC-FE-100FX
39491	Cisco GLC-FE-100FX-RGD Compatible 100Base-FX SFP Transceiver (MMF, 1310nm, 2km, LC, Rugged)	GLC-FE-100FX-RGD
39475	Cisco GLC-FE-100LX Compatible 100Base-LX SFP Transceiver (SMF, 1310nm, 10km, LC)	GLC-FE-100LX
39500	Cisco GLC-GE-100FX Compatible 100Base-FX SFP Transceiver (MMF, 1310nm, 2km, LC)	GLC-GE-100FX
39507	Cisco GLC-LH-SM Compatible 1000Base-LX SFP Transceiver (SMF, 1310nm, 10km, LC)	GLC-LH-SM
39509	Cisco GLC-LH-SM Compatible 1000Base-LX SMF SFP (mini-GBIC) Transceiver Module - 10 Pack	GLC-LH-SM 10-Pack
39508	Cisco GLC-LH-SM Compatible 1000Base-LX SMF SFP (mini-GBIC) Transceiver Module - 5 Pack	GLC-LH-SM 5-Pack
39512	Cisco GLC-LH-SMD Compatible 1000Base-LX SFP Transceiver (SMF, 1310nm, 10km, LC, DOM)	GLC-LH-SMD
39458	Cisco GLC-LX-SM-RGD Compatible 1000Base-LX SFP Transceiver (SMF, 1310nm, 10km, LC, DOM, Rugged)	GLC-LX-SM-RGD
39506	Cisco GLC-SX-MM Compatible 1000Base-SX MMF SFP (mini-GBIC) Transceiver Module - 10 Pack	GLC-SX-MM 10-Pack
39505	Cisco GLC-SX-MM Compatible 1000Base-SX MMF SFP (mini-GBIC) Transceiver Module - 5 Pack	GLC-SX-MM 5-Pack
39521	Cisco GLC-SX-MM Compatible 1000Base-SX MMF SFP (mini-GBIC) Transceiver Module - TAA Compliant	GLC-SX-MM TAA
39504	Cisco GLC-SX-MM Compatible 1000Base-SX SFP Transceiver (MMF, 850nm, 550m, LC)	GLC-SX-MM
39511	Cisco GLC-SX-MMD Compatible 1000Base-SX SFP Transceiver (MMF, 850nm, 550m, LC, DOM)	GLC-SX-MMD



39513



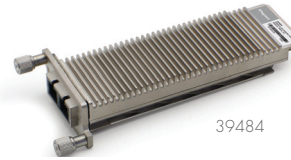
39518

CISCO® TRANSCEIVERS (CONTINUED)

SKU	Item Description	OEM Equivalent
39513	Cisco GLC-SX-MM-RGD Compatible 1000Base-SX SFP Transceiver (MMF, 850nm, 550m, LC, DOM, Rugged)	GLC-SX-MM-RGD
39503	Cisco GLC-T Compatible 1000Base-T Copper SFP (mini-GBIC) Transceiver Module - 10 Pack	GLC-T 10-Pack
39502	Cisco GLC-T Compatible 1000Base-T Copper SFP (mini-GBIC) Transceiver Module - 5 Pack	GLC-T 5-Pack
39501	Cisco GLC-T Compatible 1000Base-TX SFP Transceiver (Copper, 100m, RJ-45)	GLC-T
39510	Cisco GLC-ZX-SM Compatible 1000Base-ZX SFP Transceiver (SMF, 1550nm, 80km, LC)	GLC-ZX-SM
39495	Cisco ONS-SI-GE-SX Compatible 1000Base-SX SFP Transceiver (MMF, 850nm, 550m, LC, DOM, Rugged)	ONS-SI-GE-SX
39481	Cisco QSFP-40G-SR4 Compatible 40GBase-SR QSFP+ Transceiver (MMF, 850nm, 150m, MPO, DOM)	QSFP-40G-SR4
39480	Cisco SFP-10G-ER Compatible 10GBase-ER SFP+ Transceiver (SMF, 1550nm, 40km, LC, DOM)	SFP-10G-ER
39517	Cisco SFP-10G-LR Compatible 10GBase-LR SFP+ Transceiver (SMF, 1310nm, 10km, LC, DOM)	SFP-10G-LR
39518	Cisco SFP-10G-LRM Compatible 10GBase-LRM SFP+ Transceiver (MMF, 1310nm, 220m, LC, DOM)	SFP-10G-LRM
39516	Cisco SFP-10G-SR Compatible 10GBase-SR SFP+ Transceiver (MMF, 850nm, 300m, LC, DOM)	SFP-10G-SR
39471	Cisco SFP-1GB-SX Compatible 1000Base-SX SFP Transceiver (MMF, 850nm, 550m, LC, DOM)	SFP-1GB-SX
39463	Cisco SFP-GE-L Compatible 1000Base-LX SFP Transceiver (SMF, 1310nm, 10km, LC, DOM)	SFP-GE-L
39460	Cisco SFP-GE-S Compatible 1000Base-SX SFP Transceiver (MMF, 850nm, 550m, LC, DOM)	SFP-GE-S



39523



39484

CISCO® TRANSCEIVERS (CONTINUED)

SKU	Item Description	OEM Equivalent
39523	Cisco SFP-GE-T Compatible 1000Base-TX SFP Transceiver (Copper, 100m, RJ-45)	SFP-GE-T
39467	Cisco WS-G5483 Compatible 1000Base-TX GBIC Transceiver (Copper, 100m, RJ-45)	WS-G5483
39520	Cisco WS-G5484 Compatible 1000Base-SX GBIC Transceiver (MMF, 850nm, 550m, SC)	WS-G5484
39490	Cisco WS-G5486 Compatible 1000Base-LX GBIC Transceiver (SMF, 1310nm, 10km, SC)	WS-G5486
39460	Cisco SFP-GE-S Compatible 1000Base-SX SFP Transceiver (MMF, 850nm, 550m, LC, DOM)	SFP-GE-S
39523	Cisco SFP-GE-T Compatible 1000Base-TX SFP Transceiver (Copper, 100m, RJ-45)	SFP-GE-T
39467	Cisco WS-G5483 Compatible 1000Base-TX GBIC Transceiver (Copper, 100m, RJ-45)	WS-G5483
39520	Cisco WS-G5484 Compatible 1000Base-SX GBIC Transceiver (MMF, 850nm, 550m, SC)	WS-G5484
39490	Cisco WS-G5486 Compatible 1000Base-LX GBIC Transceiver (SMF, 1310nm, 10km, SC)	WS-G5486
39456	Cisco X2-10GB-LR Compatible 10GBase-LR X2 Transceiver (SMF, 1310nm, 10km, SC, DOM)	X2-10GB-LR
39519	Cisco X2-10GB-SR Compatible 10GBase-SR X2 Transceiver (MMF, 850nm, 300m, SC, DOM)	X2-10GB-SR
39484	Cisco XENPAK-10GB-SR Compatible 10GBase-SR XENPAK Transceiver (MMF, 850nm, 300m, SC)	XENPAK-10GB-SR
39452	Cisco XFP10GLR-192SR-L Compatible 10GBase-LR XFP Transceiver (SMF, 1310nm, 10km, LC, DOM)	XFP10GLR-192SR-L
39485	Cisco XFP-10G-MM-SR Compatible 10GBase-SR XFP Transceiver (MMF, 850nm, 300m, LC, DOM)	XFP-10G-MM-SR



39556



39553

### JUNIPER NETWORKS® TRANSCEIVERS

SKU	Item Description	OEM Equivalent
39556	Juniper Networks EX-SFP-10GE-LR Compatible 10GBase-LR SFP+ Transceiver (SMF, 1310nm, 10km, LC, DOM)	EX-SFP-10GE-LR
39555	Juniper Networks EX-SFP-10GE-SR Compatible 10GBase-SR SFP+ Transceiver (MMF, 850nm, 300m, LC, DOM)	EX-SFP-10GE-SR
39554	Juniper Networks EX-SFP-1GE-LX Compatible 1000Base-LX SFP Transceiver (SMF, 1310nm, 10km, LC, DOM)	EX-SFP-1GE-LX
39553	Juniper Networks EX-SFP-1GE-SX Compatible 1000Base-SX SFP Transceiver (MMF, 850nm, 550m, LC)	EX-SFP-1GE-SX
39455	Juniper Networks EX-SFP-1GE-T Compatible 1000Base-TX SFP Transceiver (Copper, 100m, RJ-45)	EX-SFP-1GE-T
39453	Juniper Networks EX-XFP-10GE-LR Compatible 10GBase-LR XFP Transceiver (SMF, 1310nm, 10km, LC, DOM)	EX-XFP-10GE-LR
39459	Juniper Networks SFP-1GE-FE-E-T Compatible 10/100/1000Base-TX SFP Transceiver (Copper, 100m, RJ-45)	SFP-1GE-FE-E-T
39552	Juniper Networks SFP-1GE-LX Compatible 1000Base-LX SFP Transceiver (SMF, 1310nm, 10km, LC)	SFP-1GE-LX
39553	Juniper Networks SFP-1GE-SX Compatible 1000Base-SX SFP Transceiver (MMF, 850nm, 550m, LC)	SFP-1GE-SX
39550	Juniper Networks SFP-1GE-T Compatible 1000Base-TX SFP Transceiver (Copper, 100m, RJ-45)	SFP-1GE-T
39472	Juniper Networks XFP-10G-S Compatible 10GBase-SR XFP Transceiver (MMF, 850nm, 300m, LC, DOM)	XFP-10G-S



## HP® TRANSCEIVERS

SKU	Item Description	OEM Equivalent
39497	HP 3CSFP91 Compatible 1000Base-SX SFP Transceiver (MMF, 850nm, 550m, LC)	3CSFP91
39578	HP 3CSFP92 Compatible 1000Base-LX SFP Transceiver (SMF, 1310nm, 10km, LC)	3CSFP92
39494	HP 453154-B21 Compatible 1000Base-TX SFP Transceiver (Copper, 100m, RJ-45)	453154-B21
39461	HP 455883-B21 Compatible 10GBase-SR SFP+ Transceiver (MMF, 850nm, 300m, LC, DOM)	455883-B21
39489	HP AJ1716A Compatible 2/4/8Gbs Fibre Channel SW SFP+ Transceiver (MMF, 850nm, 300m, LC)	AJ1716A
39561	HP J4858C Compatible 1000Base-SX SFP Transceiver (MMF, 850nm, 550m, LC)	J4858C
39565	HP J4859C Compatible 1000Base-LX SFP Transceiver (SMF, 1310nm, 10km, LC)	J4859C
39486	HP J4860C Compatible 1000Base-ZX SFP Transceiver (SMF, 1550nm, 70km, LC)	J4860C
39563	HP J8177C Compatible 1000Base-TX SFP Transceiver (Copper, 100m, RJ-45)	J8177C
39487	HP J9054C Compatible 100Base-FX SFP Transceiver (MMF, 1310nm, 2km, LC)	J9054C
39567	HP J9150A Compatible 10GBase-SR SFP+ Transceiver (MMF, 850nm, 300m, LC, DOM)	J9150A
39569	HP J9151A Compatible 10GBase-LR SFP+ Transceiver (SMF, 1310nm, 10km, LC, DOM)	J9151A
39564	HP JD089B Compatible 1000Base-TX SFP Transceiver (Copper, 100m, RJ-45)	JD089B
39568	HP JD092B Compatible 10GBase-SR SFP+ Transceiver (MMF, 850nm, 300m, LC, DOM)	JD092B
39570	HP JD094B Compatible 10GBase-LR SFP+ Transceiver (SMF, 1310nm, 10km, LC, DOM)	JD094B
39560	HP JD118B Compatible 1000Base-SX SFP Transceiver (MMF, 850nm, 550m, LC, DOM)	JD118B
39566	HP JD119B Compatible 1000Base-LX SFP Transceiver (SMF, 1310nm, 10km, LC, DOM)	JD119B
39562	HP JD493A Compatible 1000Base-SX SFP Transceiver (MMF, 850nm, 550m, LC)	JD493A



BROCADE® TRANSCEIVERS

SKU	Item Description	OEM Equivalent
39464	Brocade 10G-SFPP-SR Compatible 10GBase-SR SFP+ Transceiver (MMF, 850nm, 300m, LC, DOM)	10G-SFPP-SR
39496	Brocade E1MG-LX-OM Compatible 1000Base-LX SFP Transceiver (SMF, 1310nm, 10km, LC, DOM)	E1MG-LX-OM
39470	Brocade E1MG-SX-OM Compatible 1000Base-SX SFP Transceiver (MMF, 850nm, 550m, LC, DOM)	E1MG-SX-OM
39477	Brocade E1MG-TX Compatible 1000Base-TX SFP Transceiver (Copper, 100m, RJ-45)	E1MG-TX



39493

FINISAR® TRANSCEIVERS

SKU	Item Description	OEM Equivalent
39493	Finisar FCLF-8521-3 Compatible 1000Base-TX SFP Transceiver (Copper, 100m, RJ-45)	FCLF-8521-3
39478	Finisar FTLF8519P2BNL Compatible 1000Base-SX SFP Transceiver (MMF, 850nm, 550m, LC)	FTLF8519P2BNL
39476	Finisar FTLF8524P2BNL Compatible 1/2/4Gbs Fibre Channel SW SFP Transceiver (MMF, 850nm, 150m, LC)	FTLF8524P2BNL
39466	Finisar FTLF8524P2BNV Compatible 1/2/4Gbs Fibre Channel SW SFP Transceiver (MMF, 850nm, 150m, LC)	FTLF8524P2BNV
39465	Finisar FTLF8528P2BCV Compatible 2/4/8Gbs Fibre Channel SW SFP+ Transceiver (MMF, 850nm, 300m, LC)	FTLF8528P2BCV
39462	Finisar FTLX1471D3BCL Compatible 10GBase-LR SFP+ Transceiver (SMF, 1310nm, 10km, LC, DOM)	FTLX1471D3BCL
39454	Finisar FTLX8571D3BCL Compatible 10GBase-SR SFP+ Transceiver (MMF, 850nm, 300m, LC, DOM)	FTLX8571D3BCL
39474	Finisar FTLX8571D3BCV Compatible 10GBase-SR SFP+ Transceiver (MMF, 850nm, 300m, LC, DOM)	FTLX8571D3BCV





39469



39464

OTHER TRANSCEIVERS

SKU	Item Description	OEM Equivalent
39457	Intel® E10GSFSPR Compatible 10GBase-SR SFP+ Transceiver (MMF, 850nm, 300m, LC, DOM)	E10GSFSPR
39575	Netgear® AGM731F Compatible 1000Base-SX SFP Transceiver (MMF, 850nm, 550m, LC)	AGM731F
39483	Arista Networks® SFP-10G-LR Compatible 10GBase-LR SFP+ Transceiver (SMF, 1310nm, 10km, LC, DOM)	AR-SFP-10G-LR
39576	Arista Networks® SFP-10G-SR Compatible 10GBase-SR SFP+ Transceiver (MMF, 850nm, 300m, LC, DOM)	AR-SFP-10G-SR
39469	Arista Networks® SFP-1G-T Compatible 1000Base-TX SFP Transceiver (Copper, 100m, RJ-45)	AR-SFP-1G-T
39498	Avaya/Nortel® AA1419013-E5 Compatible 1000Base-SX SFP Transceiver (MMF, 850nm, 550m, LC)	AA1419013-E5
39499	Avaya/Nortel® AA1419048-E6 Compatible 1000Base-SX SFP Transceiver (MMF, 850nm, 550m, LC, DOM)	AA1419048-E6
39464	Brocade® 10G-SFPP-SR Compatible 10GBase-SR SFP+ Transceiver (MMF, 850nm, 300m, LC, DOM)	10G-SFPP-SR
39492	Enterasys® MGBIC-LC03 Compatible 1000Base-MX SFP Transceiver (MMF, 1310nm, 2km, LC)	MGBIC-LC03
39473	Extreme Networks® 10301 Compatible 10GBase-SR SFP+ Transceiver (MMF, 850nm, 300m, LC, DOM)	10301
39577	Force10 Networks® GP-XFP-1S; 430-4528 Compatible 10GBase-SR XFP Transceiver (MMF, 850nm, 300m, LC, DOM)	GP-XFP-1S
39479	MSA Compliant 1000Base-SX SFP Transceiver (MMF, 850nm, 550m, LC)	SFP-1000BASE-SX
39482	MSA Compliant 40GBase-SR QSFP+ Transceiver (MMF, 850nm, 150m, MPO, DOM)	QSFP-40GBASE-SR4

# Cat5e Snagless Patch Cables



LENGTH	GRAY	BLUE	BLACK	GREEN	RED	YELLOW	ORANGE	PURPLE	WHITE	PINK
6in	00931	00932	00933	00934	00935	00936	00937	00938	00939	00940
1ft	24814	23828	26969	24229	26968	22105	00440	00461	29952	00492
2ft	00383	00392	00401	00410	00420	00430	00441	00462	00482	00493
3ft	15177	15178	15180	15179	15223	15221	00442	00463	19479	00494
4ft	00384	00393	00402	00411	00421	00431	00443	00464	00483	00495
5ft	15187	15188	15189	15185	15190	15191	00444	00465	19477	00496
6ft	00385	00394	00403	00412	00422	00432	00445	00466	00484	00497
7ft	15192	15193	15196	15194	15197	15198	00446	00467	19478	00498
8ft	00386	00395	00404	00413	00423	00433	00447	00468	00485	00499
9ft	00387	00396	00405	00414	00424	00434	00448	00469	00486	00500
10ft	15199	15200	15202	15201	15203	15204	00449	00470	25428	00501
12ft	00388	00397	00406	00415	00425	00435	00450	00471	00487	00502
14ft	15205	15206	15208	15207	15224	15210	00451	00472	19529	00503
15ft	22013	22012	22011	00416	00426	00436	00452	00473	00488	00504
20ft	00389	00398	00407	00417	00427	00437	00453	00474	00489	00505
25ft	15211	15212	15222	15213	15215	15216	00454	00475	19520	00506
30ft	00390	00399	00408	00418	00428	00438	00455	00476	00490	00507
35ft	00391	00400	00409	00419	00429	00439	00456	00477	00491	00508
50ft	19305	20037	20038	20036	20088	22142	00457	00478	24046	00509
75ft	26970	22146	26971	22147	22122	22148	00458	00479	27094	00510
100ft	19329	21471	27096	19387	19386	20579	00459	00480	21472	00511
150ft	19378	23870	19381	19389	19388	19349	00460	00481	19352	00512

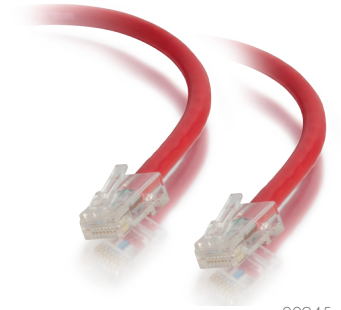


24229

# Cat5e Non-Booted Patch Cables



LENGTH	GRAY	BLUE	BLACK	GREEN	RED	YELLOW	ORANGE	PURPLE	WHITE	PINK
6in	00941	00942	00943	00944	00945	00946	00947	00948	00949	00950
1ft	24959	25462	26374	25070	25269	25623	00565	00586	27976	00617
2ft	24960	25151	00528	25515	00546	24669	00566	00587	00607	00618
3ft	22672	22673	22677	22674	22675	22676	00567	00588	23800	00619
4ft	00513	00520	00529	00537	00547	00556	00568	00589	00608	00620
5ft	22678	22679	22683	22680	22681	22682	00569	00590	25029	00621
6ft	00514	00521	00530	00538	00548	00557	00570	00591	00609	00622
7ft	22684	22685	22689	22686	22687	22688	00571	00592	23801	00623
8ft	00515	00522	00531	00539	00549	00558	00572	00593	00610	00624
9ft	00516	00523	00532	00540	00550	00559	00573	00594	00611	00625
10ft	22690	22691	22695	22692	22693	22694	00574	00595	25414	00626
12ft	00517	00524	00533	00541	00551	00560	00575	00596	00612	00627
14ft	22696	22697	22701	22698	22699	22700	00576	00597	25237	00628
15ft	22010	22709	22708	00542	00552	00561	00577	00598	00613	00629
20ft	00518	00525	00534	00543	00553	00562	00578	00599	00614	00630
25ft	22702	22703	22707	22704	22705	22706	00579	00600	23803	00631
30ft	00519	00526	00535	00544	00554	00563	00580	00601	00615	00632
35ft	25036	24896	25040	25038	25037	25039	00581	00602	27097	00633
50ft	24392	24393	24395	24394	24396	24397	00582	00603	23796	00634
75ft	24398	24399	24401	24400	24402	24403	00583	00604	22160	00635
100ft	24702	22161	26972	22162	26973	22164	00584	00605	23799	00636
150ft	24636	00527	00536	00545	00555	00564	00585	00606	00616	00637



00945

# Cat6 Snagless Patch Cables



LENGTH	GRAY	BLUE	BLACK	GREEN	RED	YELLOW	ORANGE	PURPLE	WHITE	PINK
6in	00951	00952	00953	00954	00955	00956	00957	00958	00959	00960
1ft	27130	27140	27150	27170	27180	27190	27810	27800	27160	04043
2ft	03965	03973	03981	03989	03998	04007	04016	04025	04034	04044
3ft	27131	27141	27151	27171	27181	27191	27811	27801	27161	04045
4ft	03966	03974	03982	03990	03999	04008	04017	04026	04035	04046
5ft	31340	31341	31342	31344	31345	31346	31348	31347	31343	04047
6ft	03967	03975	03983	03991	04000	04009	04018	04027	04036	04048
7ft	27132	27142	27152	27172	27182	27192	27812	27802	27162	04049
8ft	03968	03976	03984	03992	04001	04010	04019	04028	04037	04050
9ft	03969	03977	03985	03993	04002	04011	04020	04029	04038	04051
10ft	27133	27143	27153	27173	27183	27193	27813	27803	27163	04052
12ft	03970	03978	03986	03994	04003	04012	04021	04030	04039	04053
14ft	27134	27144	27154	27174	27184	27194	27814	27804	27164	04054
15ft	22016	22015	22014	03995	04004	04013	04022	04031	04040	04055
20ft	03971	03979	03987	03996	04005	04014	04023	04032	04041	04056
25ft	27135	27145	27155	27175	27185	27195	27815	27805	27165	04057
30ft	03972	03980	03988	03997	04006	04015	04024	04033	04042	04058
35ft	31350	31351	31352	31354	31355	31356	31358	31357	31353	04059
50ft	27136	27146	27156	27176	27186	27196	27816	27806	27166	04060
75ft	31360	31361	31362	31364	31365	31366	31368	31367	31363	04061
100ft	27137	27147	27157	27177	27187	27197	27817	27807	27167	04062
150ft	27139	27149	27159	27179	27189	27199	27819	27809	27169	04063



27140

# Cat6 Non-Booted Patch Cables



LENGTH	GRAY	BLUE	BLACK	GREEN	RED	YELLOW	ORANGE	PURPLE	WHITE	PINK
6in	00961	00962	00963	00964	00965	00966	00967	00968	00969	00970
1ft	04064	04085	04106	04127	04148	04169	04190	04211	04232	04253
2ft	04065	04086	04107	04128	04149	04170	04191	04212	04233	04254
3ft	04066	04087	04108	04129	04150	04171	04192	04213	04234	04255
4ft	04067	04088	04109	04130	04151	04172	04193	04214	04235	04256
5ft	04068	04089	04110	04131	04152	04173	04194	04215	04236	04257
6ft	04069	04090	04111	04132	04153	04174	04195	04216	04237	04258
7ft	04070	04091	04112	04133	04154	04175	04196	04217	04238	04259
8ft	04071	04092	04113	04134	04155	04176	04197	04218	04239	04260
9ft	04072	04093	04114	04135	04156	04177	04198	04219	04240	04261
10ft	04073	04094	04115	04136	04157	04178	04199	04220	04241	04262
12ft	04074	04095	04116	04137	04158	04179	04200	04221	04242	04263
14ft	04075	04096	04117	04138	04159	04180	04201	04222	04243	04264
15ft	04076	04097	04118	04139	04160	04181	04202	04223	04244	04265
20ft	04077	04098	04119	04140	04161	04182	04203	04224	04245	04266
25ft	04078	04099	04120	04141	04162	04183	04204	04225	04246	04267
30ft	04079	04100	04121	04142	04163	04184	04205	04226	04247	04268
35ft	04080	04101	04122	04143	04164	04185	04206	04227	04248	04269
50ft	04081	04102	04123	04144	04165	04186	04207	04228	04249	04270
75ft	04082	04103	04124	04145	04166	04187	04208	04229	04250	04271
100ft	04083	04104	04125	04146	04167	04188	04209	04230	04251	04272
150ft	04084	04105	04126	04147	04168	04189	04210	04231	04252	04273



# Cat6 Shielded Snagless Patch Cables



LENGTH	GRAY	BLUE	BLACK	GREEN	RED	YELLOW	ORANGE	PURPLE	WHITE
6in	00979	00980	00981	00982	00983	00984	00985	00986	00987
1ft	00774	00791	00808	00825	00842	00859	00876	00897	00914
2ft	00775	00792	00809	00826	00843	00860	00877	00898	00915
3ft	00776	00793	00810	00827	00844	00861	00878	00899	00916
4ft	00777	00794	00811	00828	00845	00862	00879	00900	00917
5ft	00778	00795	00812	00829	00846	00863	00880	00901	00918
6ft	00779	00796	00813	00830	00847	00864	00881	00902	00919
7ft	00780	00797	00814	00831	00848	00865	00882	00903	00920
8ft	00781	00798	00815	00832	00849	00866	00883	00904	00921
9ft	00782	00799	00816	00833	00850	00867	00884	00905	00922
10ft	00783	00800	00817	00834	00851	00868	00885	00906	00923
12ft	00784	00801	00818	00835	00852	00869	00886	00907	00924
14ft	00785	00802	00819	00836	00853	00870	00891	00908	00925
15ft	00786	00803	00820	00837	00854	00871	00892	00909	00926
20ft	00787	00804	00821	00838	00855	00872	00893	00910	00927
25ft	00788	00805	00822	00839	00856	00873	00894	00911	00928
30ft	00789	00806	00823	00840	00857	00874	00895	00912	00929
35ft	00790	00807	00824	00841	00858	00875	00896	00913	00930



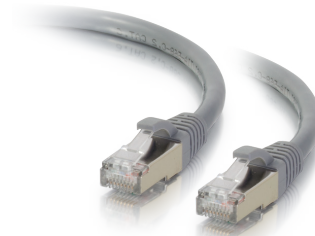
00986

CAT6A PATCH CABLES – SNAGLESS

LENGTH	GRAY	BLUE	BLACK	AQUA
6in	00972	00974	00976	00978
1ft	00655	00689	00723	00757
2ft	00656	00690	00724	00758
3ft	00657	00691	00725	00759
4ft	00658	00692	00726	00760
5ft	00659	00693	00727	00761
6ft	00660	00694	00728	00762
7ft	00661	00695	00729	00763
8ft	00662	00696	00730	00764
9ft	00663	00697	00731	00765
10ft	00664	00698	00732	00766
12ft	00665	00699	00733	00767
14ft	00666	00700	00734	00768
15ft	00667	00701	00735	00769
20ft	00668	00702	00736	00770
25ft	00669	00703	00737	00771
30ft	00670	00704	00738	00772
35ft	00671	00705	00739	00773



00694



00638

CAT6A PATCH CABLES – SNAGLESS SHIELDED

LENGTH	GRAY	BLUE	BLACK	AQUA
6in	00971	00973	00975	00977
1ft	00638	00672	00706	00740
2ft	00639	00673	00707	00741
3ft	00640	00674	00708	00742
4ft	00641	00675	00709	00743
5ft	00642	00676	00710	00744
6ft	00643	00677	00711	00745
7ft	00644	00678	00712	00746
8ft	00645	00679	00713	00747
9ft	00646	00680	00714	00748
10ft	00647	00681	00715	00749
12ft	00648	00682	00716	00750
14ft	00649	00683	00717	00751
15ft	00650	00684	00718	00752
20ft	00651	00685	00719	00753
25ft	00652	00686	00720	00754
30ft	00653	00687	00721	00755
35ft	00654	00688	00722	00756

NON-BOOTED MULTI-PACKS – CAT5e CABLES

LENGTH	GRAY			BLUE		
	25 pk	50 pk	100 pk	25 pk	50 pk	100 pk
3ft	24343	24344	24345	24348	24349	24350
7ft	24353	24354	24355	24358	24359	24360
10ft	24363	24364	24365	24368	28324	24370
14ft	24373	24374	24375	24378	24379	24380
25ft	24383	24384	24385	24388	24389	24390



24343



23348

SNAGLESS MULTI-PACKS – CAT6 CABLES

LENGTH	GRAY		BLUE	
	25 pk	50 pk	25 pk	50 pk
3ft	29027	29028	29002	29003
7ft	29032	29033	29007	29008
10ft	29037	29038	29012	29013
14ft	29042	29043	29017	29018
25ft	29047	29048	29022	29013



29027



29002



DUPLEX 40/100GB 50/125 OM4 MULTIMODE PVC FIBER OPTIC CABLES - AQUA

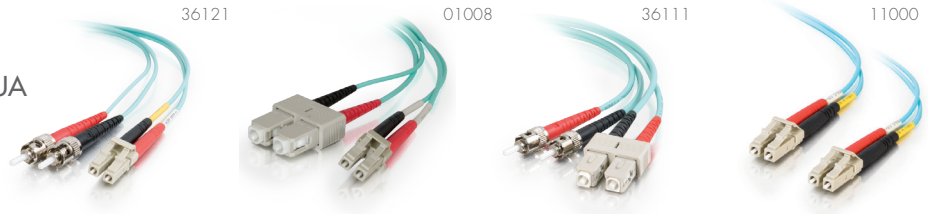
	0.5m	1m	2m	3m	4m	5m	6m	7m	8m	9m	10m	12m	15m	18m	20m	25m	30m	50m
LC-LC	01136	00997	00998	00998	01000	01001	01002	01003	01004	01005	01006	01007	01137	01138	01139	01140	01141	01142
LC-SC	01143	01008	01009	01010	11044	01011	01145	01146	01147	01148	01149	01150	01151	01152	01153	01154	01155	01156

DUPLEX 50/125 MULTIMODE LOMMF OM3 FIBER PATCH CABLES - AQUA

	0.5m	1m	2m	3m	4m	5m	6m	7m	8m	9m	10m	12m	15m	18m	20m	25m	30m	50m
LC-LC	01110	33045	33046	33047	01111	33048	01112	01113	01114	01115	33050	01116	01117	01118	01119	01120	01121	01122
LC-SC	01123	33051	33052	33053	01124	33054	01125	01126	01127	01128	33056	01129	01130	01131	01132	01133	01134	01135
LC-ST	—	36121	36122	36123	—	36125	—	—	—	—	36130	—	—	—	—	—	—	—
SC-SC	—	33057	33058	33059	—	33060	—	—	—	—	33062	—	—	—	—	—	—	—
SC-ST	—	36111	36112	36113	—	36115	—	—	—	—	36120	—	—	—	—	—	—	—
ST-ST	—	36101	36102	36103	—	36105	—	—	—	—	36110	—	—	—	—	—	—	—
MTP-MTP	—	—	—	—	—	31418	—	—	—	—	31419	—	31420	—	31421	—	31422	31423

LC UNIBOOT 10GB 50/125 OM3 DUPLEX MULTIMODE PVC FIBER OPTIC CABLES - AQUA

1m	2m	3m	4m	5m
01012	01013	01014	01015	01016



DUPLEX 62.5/125 MULTIMODE OM1 FIBER PATCH CABLES - ORANGE

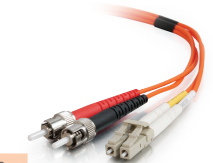
	1m	2m	3m	4m	5m	6m	7m	8m	9m	10m	15m	20m	30m
LC-LC	33172	33173	33174	33110	33175	33109	33111	33176	33112	33177	33178	33179	33180
LC-SC	33154	33155	33156	33117	33157	33118	33119	33158	33120	33159	33160	33161	33162
LC-ST	33163	33164	33165	33201	33166	33202	33203	33167	33204	33168	33169	33170	33171
SC-SC	09113	09114	09115	09162	09116	09163	09164	21590	09166	09167	09168	10998	20535
SC-ST	09128	09129	09130	09131	09134	09135	09136	09137	09138	09139	09141	10999	15970
ST-ST	05576	05575	05577	05578	05579	05580	05581	08538	09120	06239	09127	10551	06924
MTRJ-LC	33127	33028	33129	33195	33130	33196	33197	33131	33198	33132	33133	27534	33135
MTRJ-MTR	33145	33146	33147	33121	33148	33122	33123	33149	33124	33150	33151	33152	33153
MTRJ-ST	33136	33137	33138	33191	33139	33192	33193	33140	33194	33141	33142	33143	33144



33155

DUPLEX 50/125 MULTIMODE OM2 FIBER PATCH CABLES - ORANGE

	1m	2m	3m	4m	5m	6m	7m	8m	9m	10m	15m	20m	30m
LC-LC	33027	33028	33029	33030	33031	33032	33033	33034	33035	33036	33038	33039	35130
LC-SC	33014	33015	33016	33017	33018	33019	33020	33021	33022	33023	33025	33026	35131
LC-ST	37400	37401	37402	37403	37404	37405	37406	37407	37408	37409	37410	37411	37412
SC-SC	33001	33002	33003	33004	33005	33006	33007	33008	33009	33010	33012	33013	35132
SC-ST	37415	37416	37417	37418	37419	37420	37421	37422	37423	37424	37425	37426	37427
ST-ST	37430	37431	37432	37433	37434	37435	37436	37437	37438	37439	37440	37441	37442



37405

DUPLEX 9.125 SINGLE-MODE OS1 FIBER PATCH CABLES - YELLOW

	1m	2m	3m	4m	5m	6m	7m	8m	9m	10m	15m	20m	30m
LC-LC	29191	26264	28758	37460	26566	37461	37462	8355	37463	25977	37464	37465	37466
LC-SC	29190	26260	29920	37467	28950	37468	37469	8356	37470	28523	37471	37472	37473
LC-ST	37474	37475	37476	37477	37478	37479	37480	37481	37482	37483	37484	37485	37486
SC-SC	20808	20455	12505	37487	16816	37488	37489	21763	37490	18575	37491	37492	37493
SC-ST	18310	15289	13478	37494	24762	37495	37496	31796	37497	13479	37498	37499	37453
ST-ST	29951	8353	13701	37454	29533	37455	37456	8354	37457	25885	37458	37459	37380



29191

SIMPLEX 9/125 SINGLE-MODE OS1 FIBER PATCH CABLES - YELLOW

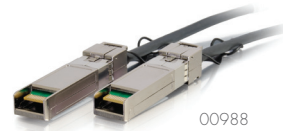
	1m	2m	3m	4m	5m	6m	7m	8m	9m	10m	15m	20m	30m
LC-LC	37103	37104	37105	34700	37106	34701	34702	34703	34704	37107	34705	34706	34707
LC-SC	37108	37109	37110	34708	37111	34709	34710	34711	34712	37112	34713	34714	34715
LC-ST	37113	37114	37115	34716	37116	34717	34718	34719	34720	37117	34721	34722	34723
SC-SC	37128	37129	37130	34724	37131	34725	34726	34727	34727	37132	34729	34730	34731
SC-ST	37123	37124	37125	34632	37126	34733	34734	34735	34735	37127	34737	34738	34739
ST-ST	37118	37119	37120	34740	37121	34741	34742	34744	34743	37122	34745	34746	34747



37113

CISCO® COMPATIBLE PASSIVE SFP+ TWINAX CABLES

CONNECTOR	1M	2M	3M	5M	7M
SFF-8432	00988	00989	00990	00991	00992



CISCO COMPATIBLE ACTIVE SFP+ TWINAX CABLES

CONNECTOR	7M	10M
SFF-8432	00993	00994



PASSIVE SFP+ TWINAX CABLES

CONNECTOR	0.5M	1M	2M	3M	4M	5M	7M	10M	15M
SFF-8432	06120	06122	06124	06126	—	06129	06130	06131	06132
SFF-8432	06121	06123	06125	06127	06128	—	—	—	—



ACTIVE SFP+ TWINAX CABLES

CONNECTOR	0.5M	1M	2M	3M	4M	5M	7M	10M	15M
SFF-8432	06133	06134	06135	06136	06137	06138	06139	06140	06141

PASSIVE QSFP+ 40G QDR INFINIBAND® CABLES

CONNECTOR	0.5M	1M	2M	3M	4M	5M	7M	10M	15M
SFF-8436	06150	06151	06153	06154	06156	06158	06160	—	—
SFF-8436	—	—	06152	06155	06157	06159	—	—	—



06150

PASSIVE QSFP+ 56G FDR INFINIBAND CABLES

CONNECTOR	1M	2M	3M
SFF-8436	06167	06168	06169



06167

ACTIVE QSFP+ 24G+ HALF ACTIVE INFINIBAND CABLES

CONNECTOR	5M	10M	12M	15M
SFF-8436	06163	06164	06165	06166



06163



06195

ACTIVE OPTICAL QSFP+ INFINIBAND CABLES (AOC)

CONNECTOR	1M	2M	3M	5M	7M	10M	15M	20M	25M	30M	40M	50M	75M	100M	150M
SFF-8436	06195	06196	06197	06198	06199	06200	06201	06202	06203	06204	06205	06206	06207	06208	06209

6G PASSIVE EXTERNAL MINI-SAS CABLES

CONNECTOR	0.5M	1M	2M	3M	4M	5M	6M
SFF-8088	06175	06176	06177	06178	06179	06180	06182



06175

PASSIVE LSZH SFP+ TWINAX CABLES

CONNECTOR	1FT	2FT	3FT	4FT	5FT	7FT	10FT	15FT
SFF-8432	06142	06143	06144	06145	06146	06147	06148	06149



33070

CX4 10G LATCHING CABLES

CONNECTOR	0.5M	1M	3M	5M	7M	10M
SFF-8470	33070	33071	33072	33073	33074	33075



06188

3G PASSIVE EXTERNAL MINI-SAS EQUALIZED CABLES

CONNECTOR	5M	6M	8M	9M	10M	15M
SFF-8088	06181	06183	06184	06185	06186	06187



33063

6G ACTIVE EXTERNAL MINI-SAS CABLES

CONNECTOR	5M	10M	15M	20M	25M
SFF-8088	06188	06189	06190	06191	06192

IB-4X 10G INFINIBAND® CABLES

CONNECTOR	0.5M	1M	3M	5M	7M	10M
SFF-8470	33063	33064	33065	33066	33067	33068



Cables To Go  
3555 Kettering Blvd.  
Moraine, OH 45439  
Phone: 800.CABL.911  
[www.c2g.com](http://www.c2g.com)

Follow Us

