



BLUETOOTH®
MULTI-COLOR LED LIGHT BAR
with IR Remote Control

Operation Manual

MODEL MLB7-1030

V2.0 1020

Introduction

This Bluetooth® Multi-color LED Light Bar is easy to install, easy to use, and is ideal for adding controllable ambient lighting to any room.

Features

- Multi-color and dimmable LED lighting effects
- Included color-selector remote with positionable IR receiver
- Bluetooth® app controlled
- Multi-position base for various horizontal, vertical, or wall mounting orientations
- Conveniently plugs into any 5V USB power source (not included)
- Plug and play
- Control multiple light bars simultaneously through the app

What's Included

- Bluetooth® Multi-color LED Light Bar
- IR Remote Control with battery (1 x 3V battery, CR2025)
- Multi-position Base
- Base Attachment Screws x2
- Base and IR Receiver Adhesive
- User Manual x1 pc

Safety Instructions

Please read and understand all instructions before using this product. If damage is caused by failure to follow the instructions, this warranty is null and void.

- Keep these instructions.
- Do not drop, puncture, or disassemble this product.
- Do not expose this product to dripping or splashing of drinks or liquids of any kind.
- Avoid long exposure to direct sunlight, which may cause damage.
- Do not expose this product to open flames.
- Do not use the product in a strong magnetic field.
- Use a clean, soft cloth to clean. Do not use any corrosive cleaners/oils to clean.
- Do not attempt to repair the device or open the unit as this will void the warranty.

Specifications

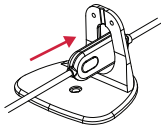
- LED Light Bar (USB): 5V
- output: 1.5W
- cable length: 5ft
- remote control: 3V
(1 x 3V battery, type CR2025)

Get Started

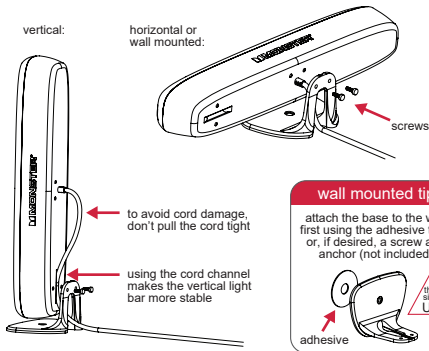
- 1 Determine where and in what orientation you would like to use your Bluetooth® Multi-color LED Light Bar



- 2 Pass the USB power cord and IR receiver through the opening in the multi-position base



- 3** For horizontal or wall mounted orientations, attach the base in the center of the light bar using the two included screws. For vertical orientation, route cord through the cord channel and attach the base at the end of the light bar.



- 4** Position the IR receiver in a location where it can receive signal from the IR remote. Secure the receiver using the included adhesive tape if desired.
- 5** Remove the tab from the battery compartment of the remote control
- 6** Connect the USB cable to a powered USB port or wall charger (1A adapter required – not included)

MONSTER®



Operation Manual

MODEL MLB7-1030

V2.0 1020

Controls, at a Glance



IR Remote



IR Receiver (in-line)

①	ON/OFF	Turn the product on and off
②	MULTI-WHITE SELECTORS	Select from cool, soft, or warm white
③	MULTI-COLOR SELECTORS	Change the color to match your mood
④	FLASH	Flash color-changing mode
⑤	STROBE	Strobe color-changing mode
⑥	FADE	Fade color-changing mode
⑦	SMOOTH	Smooth color-changing mode
⑧	RESET	Reset to default settings
⑨	DIMMER BUTTONS	Adjust the brightness/intensity

IR Remote Operation

- 1 Turn on the LED Light by pushing the ON button on the remote control
- 2 Select the desired color of the desired effect by pushing the corresponding button on the remote control
- 3 Set the desired brightness using the buttons to increase/decrease the intensity of color
- 4 Push the OFF button to turn off the LED Light

Changing the remote control battery:

The battery for the remote control has already been installed. Remove the battery pull tab to operate.

- 1 The battery compartment is located on the narrow side of the remote control
- 2 Remove the empty battery and insert a 3V battery, type CR2025, with the positive terminal pointing upwards
- 3 Place the battery compartment back in the remote control so it locks in place

Bluetooth® App Operation



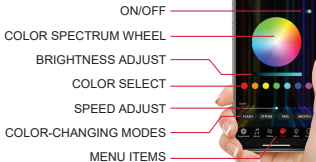
- 1 Download the free Monster Basics Light Control app



- 2 Enable Bluetooth® connectivity on your device. Open the Monster Basics Light Control app and locate your Monster LED Light Bar in the equipment section. Select the device in the list to connect.
- 3 Once connected, you can now control color, brightness, color-changing modes and speeds, music reactive, and on/off scheduling

NOTE: Your LED Light Bar must be connected to power and your phone must be Bluetooth enabled and within range to operate

Color Control:



Customer Service



1 Year Limited Warranty



866-246-2008



customerservice@monsterilluminescence.com

In the event this product becomes defective, please do not return this product to your retailer.

Warning

Changes or modifications not expressly approved by the party responsible for compliance could void the user's warranty or authority to operate the equipment.

FCC Statement

This device complies with Part 15 of the FCC Rules. Operation is subject to following two conditions: (1) this device may not cause harmful interference, and (2) this device must accept any interference received, including interference that may cause undesired operation.

FCC Radio Frequency Exposure Statement

The device has been evaluated to meet general RF exposure requirements. The device can be used in fixed or mobile condition. The minimum separation distance is 20cm.

The illustrated products and specifications may differ slightly from those supplied. The M Monster logo is a registered trademark of Monster, Inc. or its subsidiaries in the U.S. and other countries and are used under license. All other brand names are trademarks of their respective owners. Neither Jem Accessories, Inc. nor Monster, Inc. is affiliated with the respective owners of their trademarks. Licensed and Manufactured by Jem Accessories, Inc. South Plainfield, NJ 07080. Made in China.