



Product End-of-Life Disassembly Instructions

Product Category: Notebooks and Tablet PCs

Marketing Name / Model
[List multiple models if applicable.]

HP EliteBook 840 G6 Notebook PC Healthcare Edition

Purpose: The document is intended for use by end-of-life recyclers or treatment facilities. It provides the basic instructions for the disassembly of HPI products to remove components and materials requiring selective treatment, as defined by EU directive 2002/96/EC, Waste Electrical and Electronic Equipment (WEEE).

NOTE: Recyclers should sort plastic materials into resin streams for recycling based on the ISO 11469 plastic marking code on the plastic part. For any questions on plastic marking, please contact [HP's Sustainability Contact](#).

1.0 Items Requiring Selective Treatment

1.1 Items listed below are classified as requiring selective treatment.

1.2 Enter the quantity of items contained within the product which require selective treatment in the right column, as applicable.

Item Description	Notes	Quantity of items included in product
Printed Circuit Boards (PCB) or Printed Circuit Assemblies (PCA)	With a surface greater than 10 sq cm M/B	2
Batteries, excluding Li-Ion batteries.	All types including standard alkaline, coin or button style batteries	0
Li-Ion batteries. Include all Li-Ion batteries if more than one is provided with the product (such as a detachable notebook keyboard battery, RTC coin cell, etc.)	Battery(ies) are attached to the product by (check all that apply with an "x" inside the "[]"): [X] screws [X] snaps [] adhesive [] other. Explain NOTE: Add detailed removal procedures including required tools in the sections 3.1/3.2.	2 (Main battery and RTC battery)
Mercury-containing components	For example, mercury in lamps, display backlights, scanner lamps, switches, batteries	0
Liquid Crystal Displays (LCD) with a surface greater than 100 sq cm	Includes background illuminated displays with gas discharge lamps (14" LED)	1
Cathode Ray Tubes (CRT)		0
Capacitors / condensers (Containing PCB/PCT)		0
Electrolytic Capacitors / Condensers measuring greater than 2.5 cm in diameter or height		0
External electrical cables and cords	DC Cable for External Power Supply	1
Gas Discharge Lamps		0
Plastics containing Brominated Flame Retardants weighing > 25 grams (not including PCBs or PCAs already listed as a separate item above)	Excluding B&S parts (EPS)	0

EL-MF877-00
Template Revision C

Page 1

Last revalidation date 04-01-2018

HPI instructions for this template are available at [EL-MF877-01](#)

Item Description	Notes	Quantity of items included in product
Components and parts containing toner and ink, including liquids, semi-liquids (gel/paste) and toner	Include the cartridges, print heads, tubes, vent chambers, and service stations.	0
Components and waste containing asbestos		0
Components, parts and materials containing refractory ceramic fibers		0
Components, parts and materials containing radioactive substances		0

2.0 Tools Required

List the type and size of the tools that would typically be used to disassemble the product to a point where components and materials requiring selective treatment can be removed.

Tool Description	Tool Size (if applicable)
Electric screwdriver (Cross)	#1
Electric screwdriver (Trox)	T8
Plastic stick	

3.0 Product Disassembly Process

3.1 List the basic steps that should typically be followed to remove components and materials requiring selective treatment including the required steps to remove the external enclosure:

1. Follow steps described in Disassembly instruction (file attached)
2. If parts can be removed without using a tool, remove it first
3. Use correct screwdriver and torque value before unlock the screw
- 4.
- 5.
- 6.
- 7.

3.2 Optional Graphic. If the disassembly process is complex, insert a graphic illustration below to identify the items contained in the product that require selective treatment (with descriptions and arrows identifying location)

MANUFACTURING PROCESS INSTRUCTIONS

MECHANICAL ASSEMBLY

MODEL : Computron Trypticon

Sub-assembly name:	Crescent & Tenjin 拆机SOP		
Document No.:	Crescent & Tenjin 拆机SOP		
Written by:	陈博	Revision:	1.00
Date:	2019/3/4	Page:	1 of 29

A. Current station version list:

Station	Version	Station	Version	Station	Version	Station	Version	Station	Version	Station	Version
1	1.00	11	1.00	21	1.00						
2	1.00	12	1.00	22	1.00						
3	1.00	13	1.00	23	1.00						
4	1.00	14	1.00	24	1.00	HF	HF	HF	HF		
5	1.00	15	1.00	25	1.00						
6	1.00	16	1.00	26	1.00	HF	HF	HF	HF		
7	1.00	17	1.00	27	1.00						
8	1.00	18	1.00	28	1.00						
9	1.00	19	1.00			HF	HF	HF	HF		
10	1.00	20	1.00								

B. Version Modify list:

Date	Station	Content	Ver.	Design
2019/4/3	ALL	首次发行	1.**	陈博



作业指导书

Document No. : Crescent & Tenjin 拆机SOP

站 别: 1(1/1)

作业名称 : Remove the self-contained screws

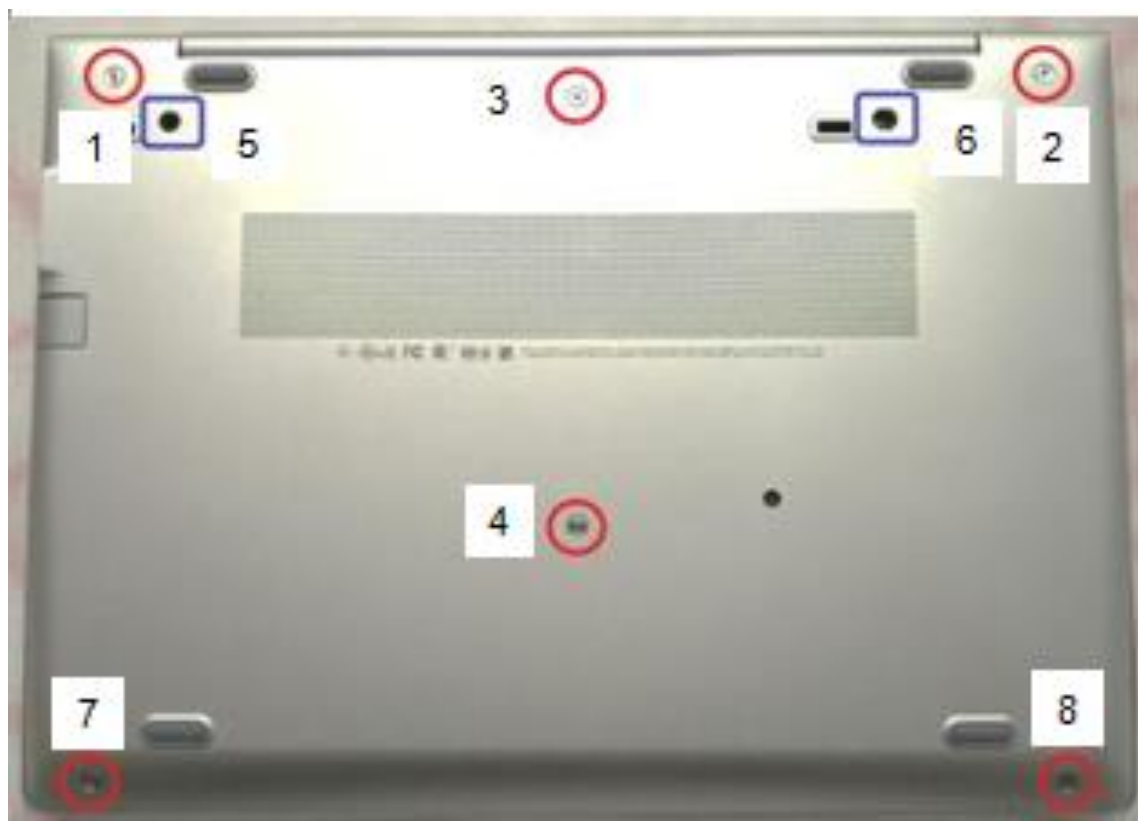
Ver. : 1.00 编辑日期:2019/4/3

步骤 :

1. Remove the self-contained screws*8

❖ Torque : $2.0 \pm 0.2 \text{ kgf} \cdot \text{cm}$

❖ No stripped screws



注意事项：如有异常，请立即通知领班或助理。

治具清单(治具规格)	数量	治具清单(治具规格)	数量
螺丝起子	1		

制表： 黄雅君 发行部门： 工业工程课



作业指导书

Document No. : Crescent & Tenjin 拆机SOP

站 别: 2(1/1)

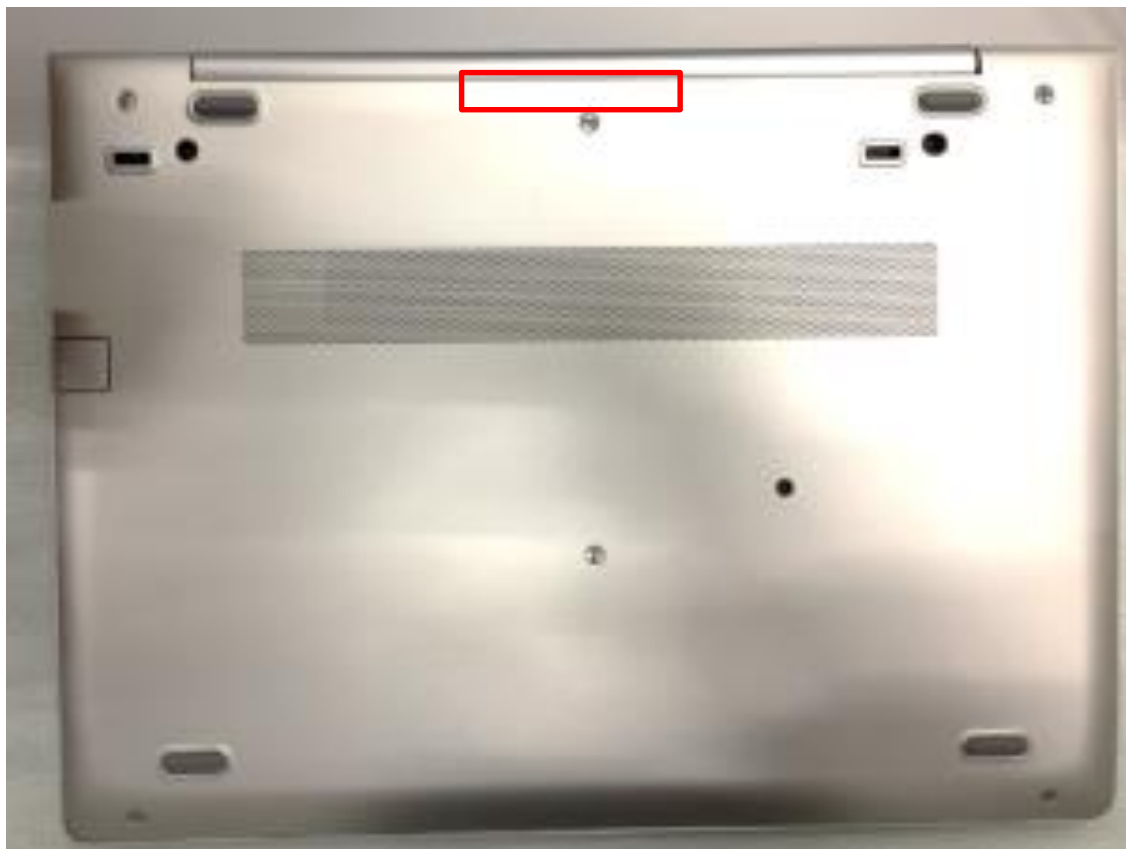
作业名称 : Disassemble BASE

Ver. : 1.00 编辑日期:2019/4/3

步骤 :

1. Separate base with cable management rod

步骤: Inserted the cable bar into the gap between TOP and BASE intermediate area, and then slid cable bar to separate the TOP from the BASE.



注意事项：如有异常，请立即通知领班或助理。

治具清单(治具规格)	数量	治具清单(治具规格)	数量
塑胶拆机棒	1		

制表： 黄雅君 发行部门： 工业工程课



作业指导书

Document No. : Crescent & Tenjin 拆机SOP

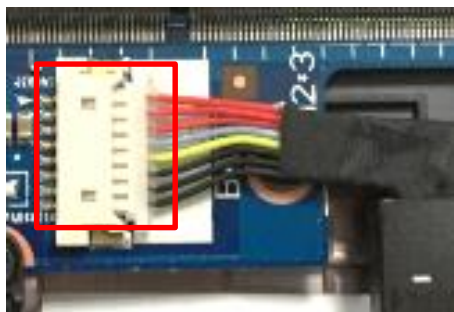
站 别: 3(1/1)

作业名称 : Disassemble battery

Ver. : 1.00 编辑日期:2019/4/3

步骤 :

1. Pull out the battery CNTR
2. Remove battery screw T8*5
 - ❖ Torque : $2.0 \pm 0.2 \text{ kgf} \cdot \text{cm}$
 - ❖ No stripped screws
3. remove the battery



注意事项：如有异常，请立即通知领班或助理。

治具清单(治具规格)	数量	治具清单(治具规格)	数量
T8电动起子	1		



作业指导书

Document No. : Crescent & Tenjin 拆机SOP

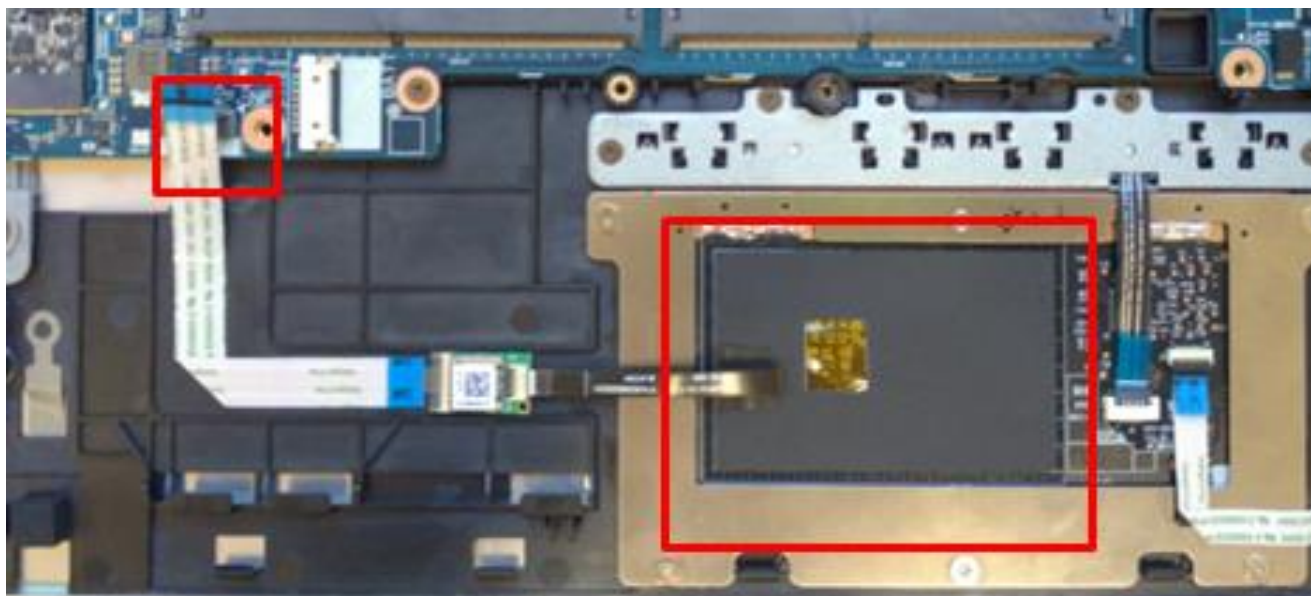
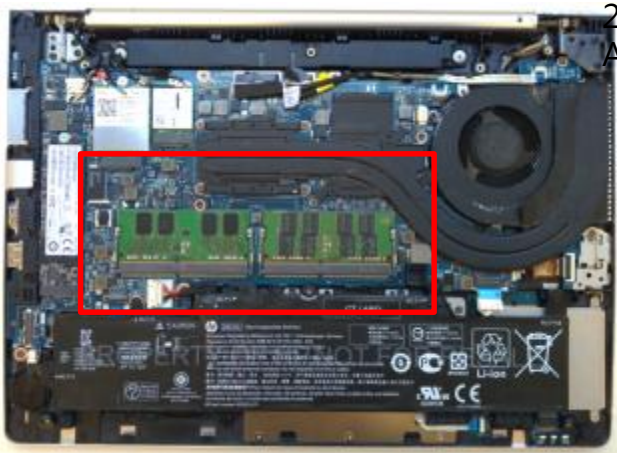
站 别: 4(1/1)

作业名称 : Disassemble DDR

Ver. : 1.00 编辑日期:2019/4/3

步骤 :

1. Disassemble DDR, Picture 1
2. Disassemble NFC FFC, NFC MODULE, NFC ANTENNA



注意事项：如有异常，请立即通知领班或助理。

治具清单(治具规格)	数量	治具清单(治具规格)	数量



作业指导书

Document No. : Crescent & Tenjin 拆机SOP

站 别: 5(1/1)

作业名称 : Disassemble WWAN/WAN CABLE

Ver. : 1.00 编辑日期:2019/4/3

步骤 :

1. Disassemble WWAN/WAN CABLE, remove from the hook in turn
2. Disassemble screws of WWAN/WLAN CARD/SSD, and take out WWAN · WLAN CARD · SSD. Picture 2.

❖ Torque : $1.5 \pm 0.2 \text{ kgf} \cdot \text{cm}$

❖ No stripped screws



注意事项：如有异常，请立即通知领班或助理。

治具清单(治具规格)	数量	治具清单(治具规格)	数量
十字电动起子	1		



作业指导书

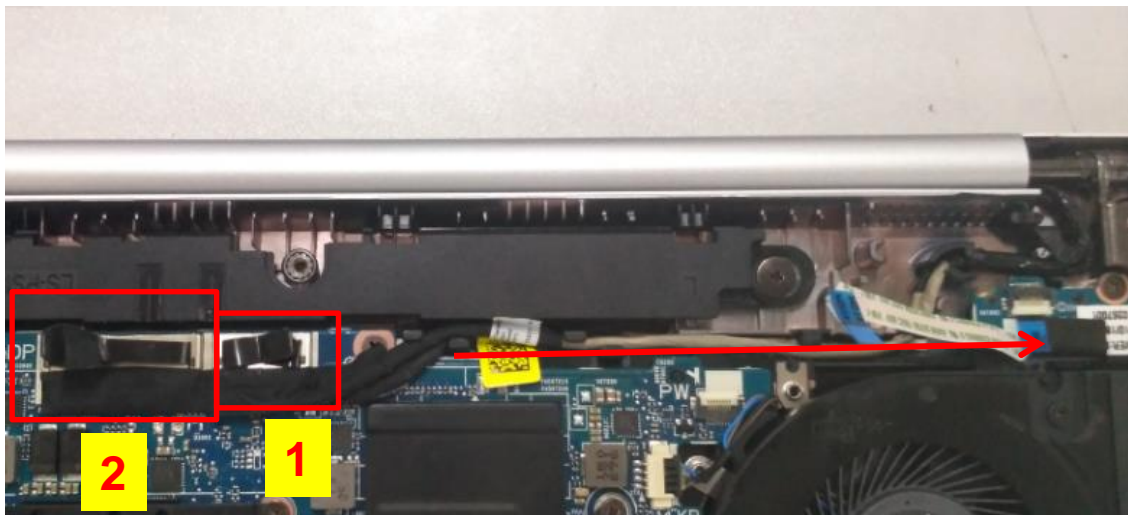
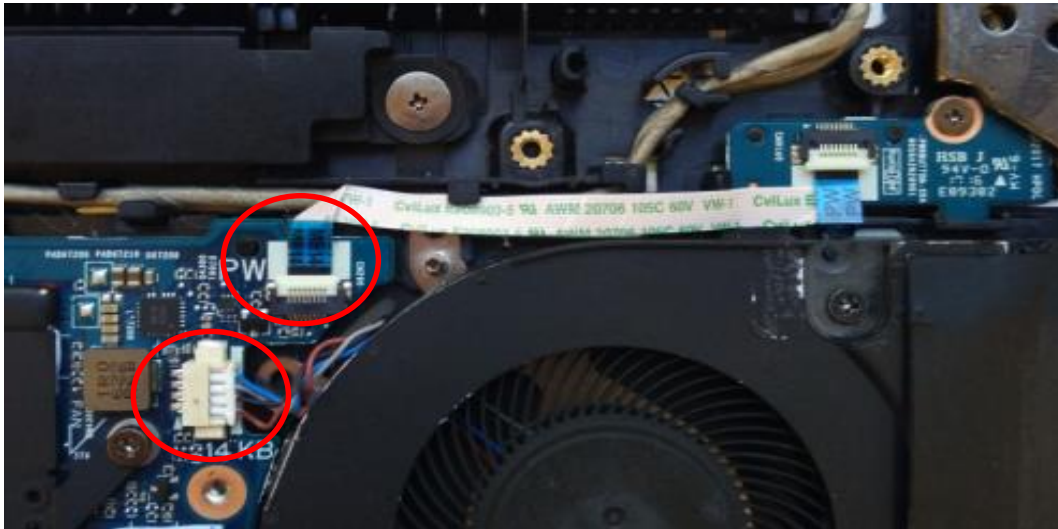
Document No. : Crescent & Tenjin 拆机SOP

站 别: 6(1/1)

作业名称 : Disassemble Power FFC FAN/LVDS CABLE : 1.00 编辑日期:2019/4/3

步骤 :

1. Disassemble Power FFC/FAN cable, LVDS cable



注意事项：如有异常，请立即通知领班或助理。

治具清单(治具规格)	数量	治具清单(治具规格)	数量

制表： 黄雅君 发行部门： 工业工程课



作业指导书

Document No. : Crescent & Tenjin 拆机SOP

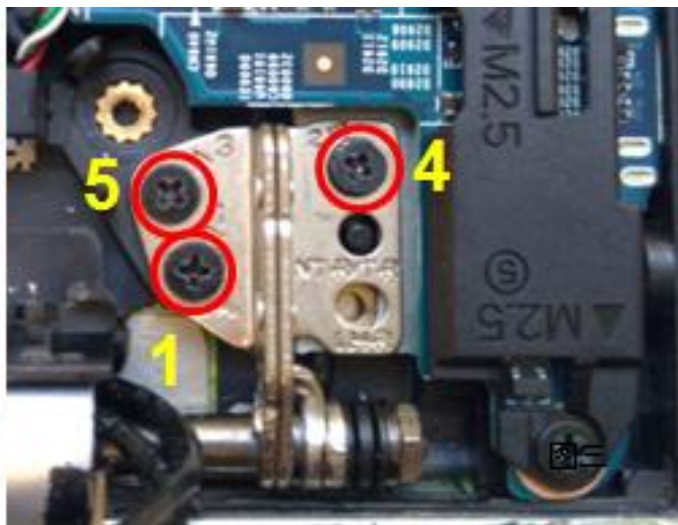
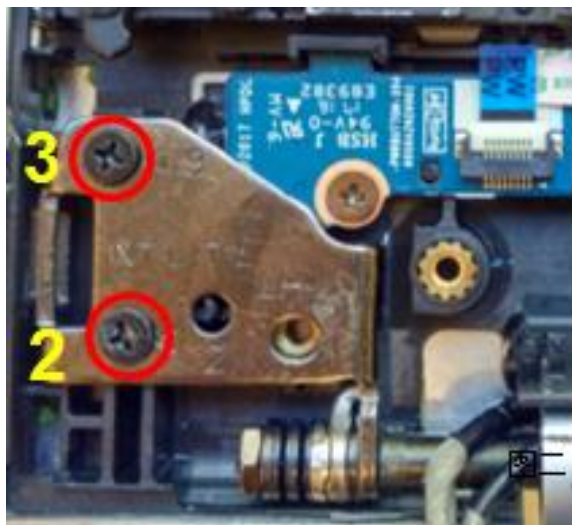
站 别: 7(1/1)

作业名称 : Disassemble Hinge screws

Ver. : 1.00 编辑日期:2019/4/3

步骤 :

1. Disassemble Hinge screws M2.5*4.0
 - ❖ Torque : $3.0 \pm 0.2 \text{ kgf} \cdot \text{cm}$
 - ❖ No stripped screws
2. Open Top to 90 degrees, then remove TOP in parallel



注意事项：如有异常，请立即通知领班或助理。

治具清单(治具规格)	数量	治具清单(治具规格)	数量
十字电动起子 1			



作业指导书

Document No. : Crescent & Tenjin 拆机SOP

站 别: 8(1/1)

作业名称 : Disassemble KB screws

Ver. : 1.00 编辑日期:2019/4/3

步骤 :

1. Disassemble KB screws M2.0*3.0(6052B0302601)*2

❖ Torque : 1.5 ± 0.2 kgf · cm

❖ No stripped screws



注意事项：如有异常，请立即通知领班或助理。

治具清单(治具规格)	数量	治具清单(治具规格)	数量
十字电动起子	1		

制表： 黄雅君 发行部门： 工业工程课



作业指导书

Document No. : Crescent & Tenjin 拆机SOP

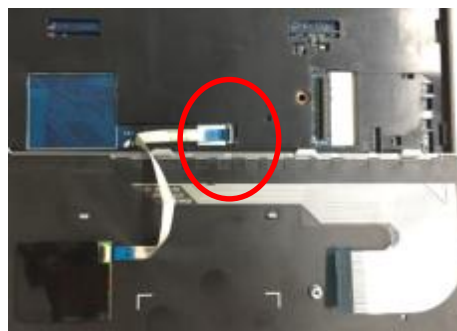
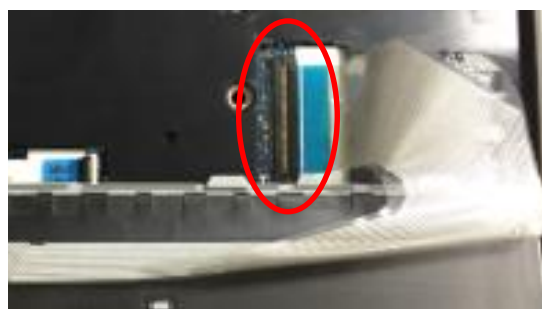
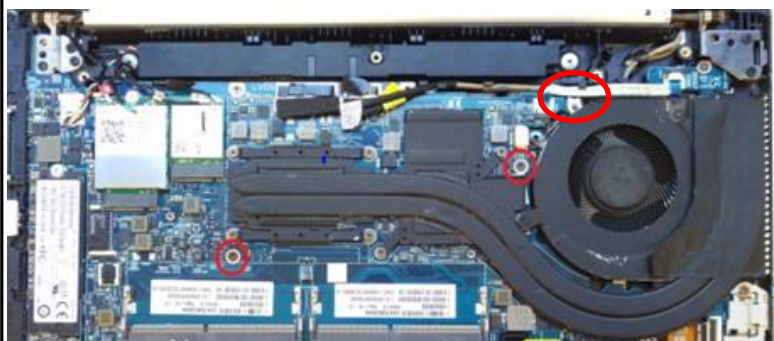
站 别: 9(1/1)

作业名称 : Disassemble KB

Ver. : 1.00 编辑日期:2019/4/3

步骤 :

1. Use a thin round bar to push out KB from the gap between FAN and MB
2. Lift KB from the front of the KB to 90 degrees, then open the KB CNTR/backlight FPC CNTR/PS CNTR and remove the keyboard



注意事项：如有异常，请立即通知领班或助理。

治具清单(治具规格)	数量	治具清单(治具规格)	数量
拆机棒	1		



作业指导书

Document No. : Crescent & Tenjin 拆机SOP

站 别: 10(1/1)

作业名称 : Remove the screws under the KB

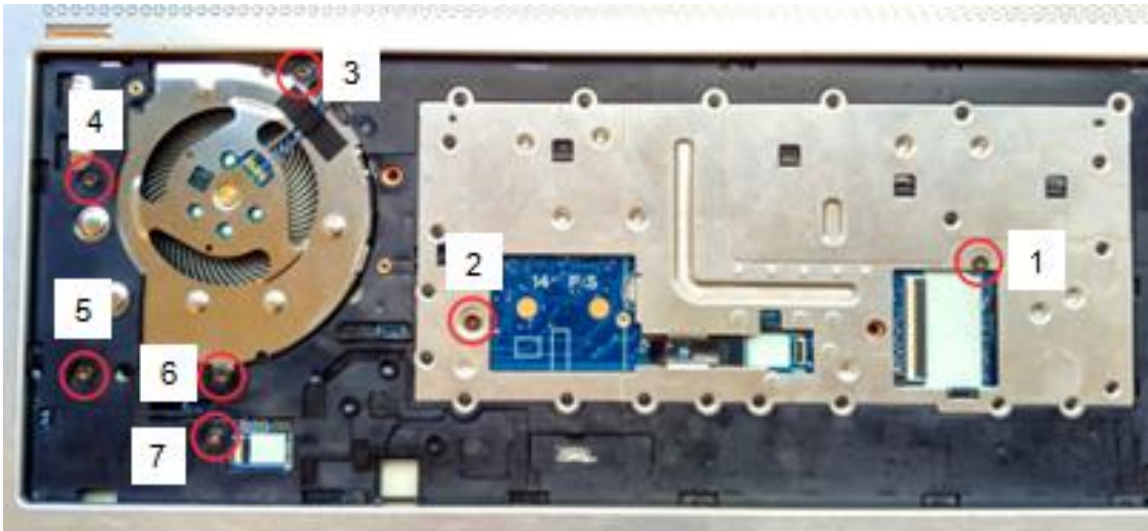
Ver. : 1.00 编辑日期:2019/4/3

步骤 :

1. Remove the screws under the KBM2.0*3.0(6052B0302601)*7

❖ Torque : 1.5 ± 0.2 kgf · cm

❖ No stripped screws

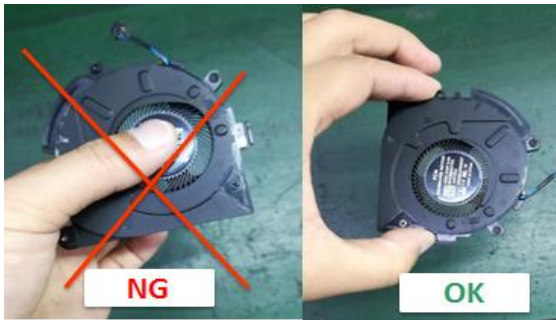
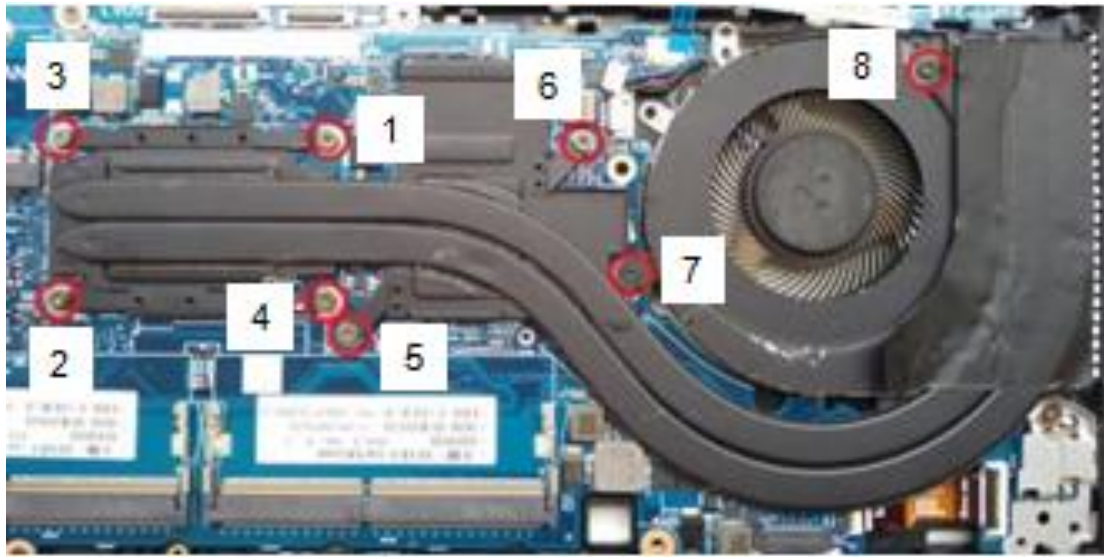


注意事项：如有异常，请立即通知领班或助理。

治具清单(治具规格)	数量	治具清单(治具规格)	数量
十字螺丝起子	1		

步骤 :

1. Remove the Thermal/FAN self-contained screws*7(picture 1)
❖ Torque : $1.5 \pm 0.2 \text{ kgf} \cdot \text{cm}$
❖ No stripped screws
2. Pay attention to take the right location of the Thermal/FAN



注意事项：如有异常，请立即通知领班或助理。

治具清单(治具规格)	数量	治具清单(治具规格)	数量
十字螺丝起子	1		



作业指导书

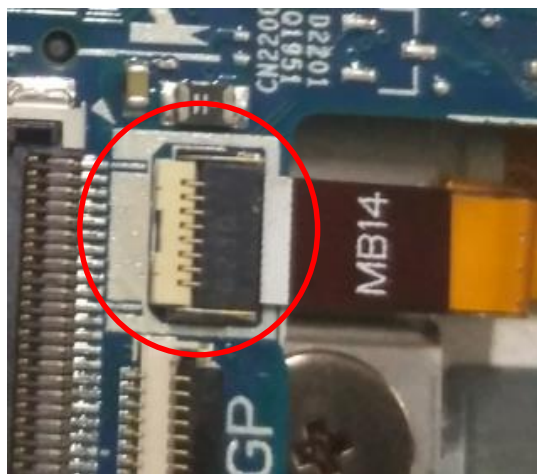
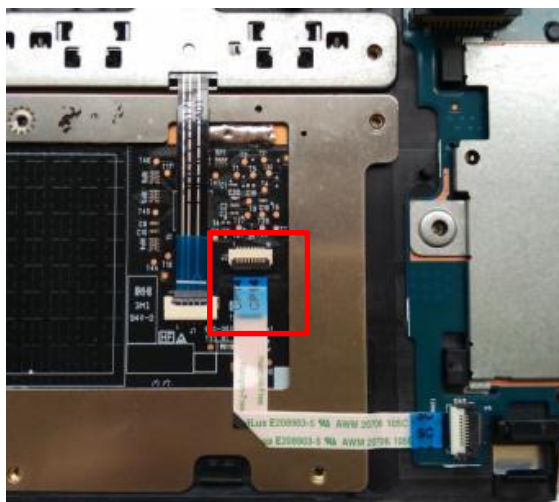
Document No. : Crescent & Tenjin 拆机SOP

站 别: 12(1/1)

作业名称 : Disassemble USB Bracket/FFC CNTR Ver. : 1.00 编辑日期:2019/4/3

步骤 :

1. Remove the USB Bracket screw M2.0*3.0(6052B0302601)*2
 - ❖ Torque : 1.5 ± 0.2 kgf · cm
 - ❖ No stripped screws
2. Disassemble USB Bracket(6053B1479301)
3. Disassemble MSC FFC/Finger Pinter FPC



注意事项：如有异常，请立即通知领班或助理。

治具清单(治具规格)	数量	治具清单(治具规格)	数量
十字螺丝起子	1		



作业指导书

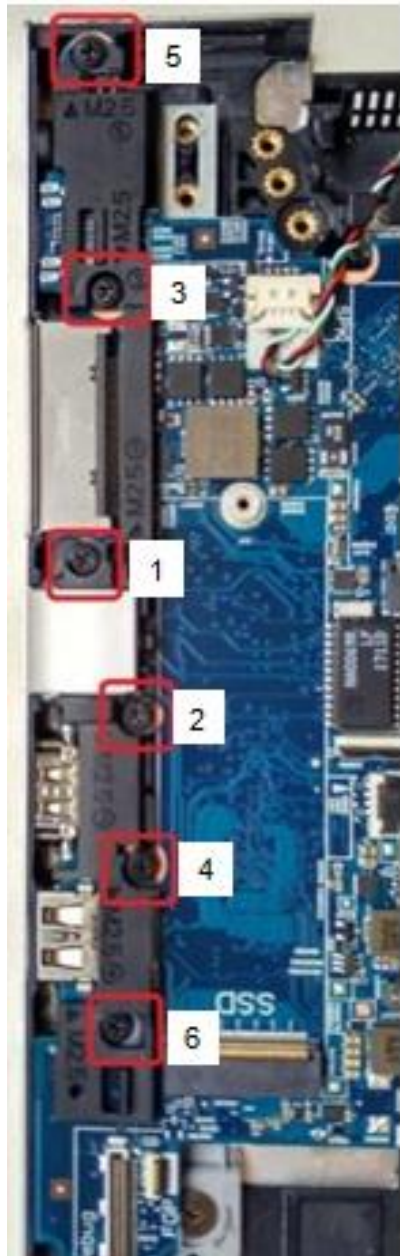
Document No. : Crescent & Tenjin 拆机SOP

站 别: 13(1/1)

作业名称 : Disassemble RJ45 screws

Ver. : 1.00 编辑日期:2019/4/3

步骤 :



1. Disassemble RJ45 screws M2.0*4.0(6052B0101901)*6(picture 1)

- ❖ No stripped screws
- ❖ Torque : $1.5 \pm 0.2 \text{ kgf} \cdot \text{cm}$

注意事项：如有异常，请立即通知领班或助理。

治具清单(治具规格)	数量	治具清单(治具规格)	数量
十字螺丝起子	1		



作业指导书

Document No. : Crescent & Tenjin 拆机SOP

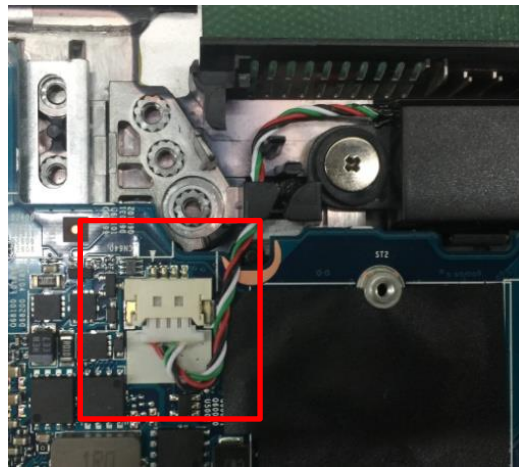
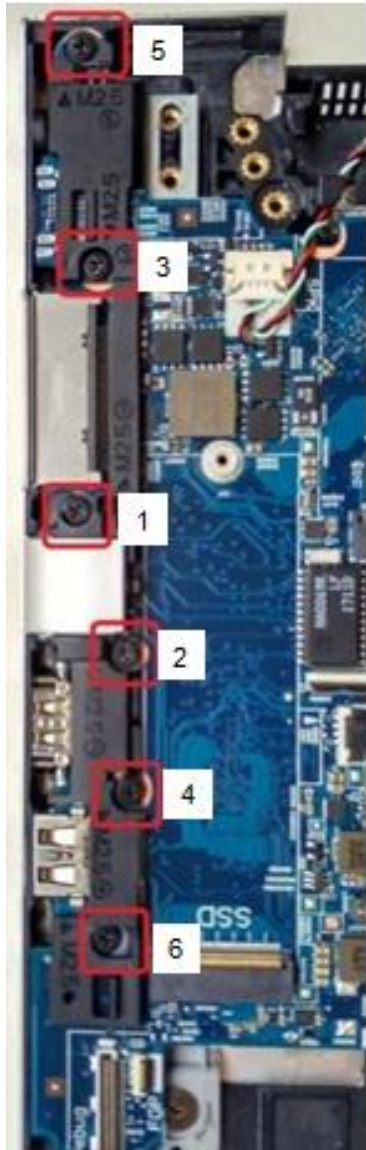
站 别: 14(1/1)

作业名称 : Disassemble RJ45 screws

Ver. : 1.00 编辑日期:2019/4/3

步骤 :

- 1.Take off I/O Frame(6051B1194301)
2. Disassemble Speaker CNTR
3. Use disassemble stick to remove RTC battery in the direction of below arrow



注意事项：如有异常，请立即通知领班或助理。

治具清单(治具规格)	数量	治具清单(治具规格)	数量



作业指导书

Document No. : Crescent & Tenjin 拆机SOP

站 别: 15(1/1)

作业名称 : Remove MB screws

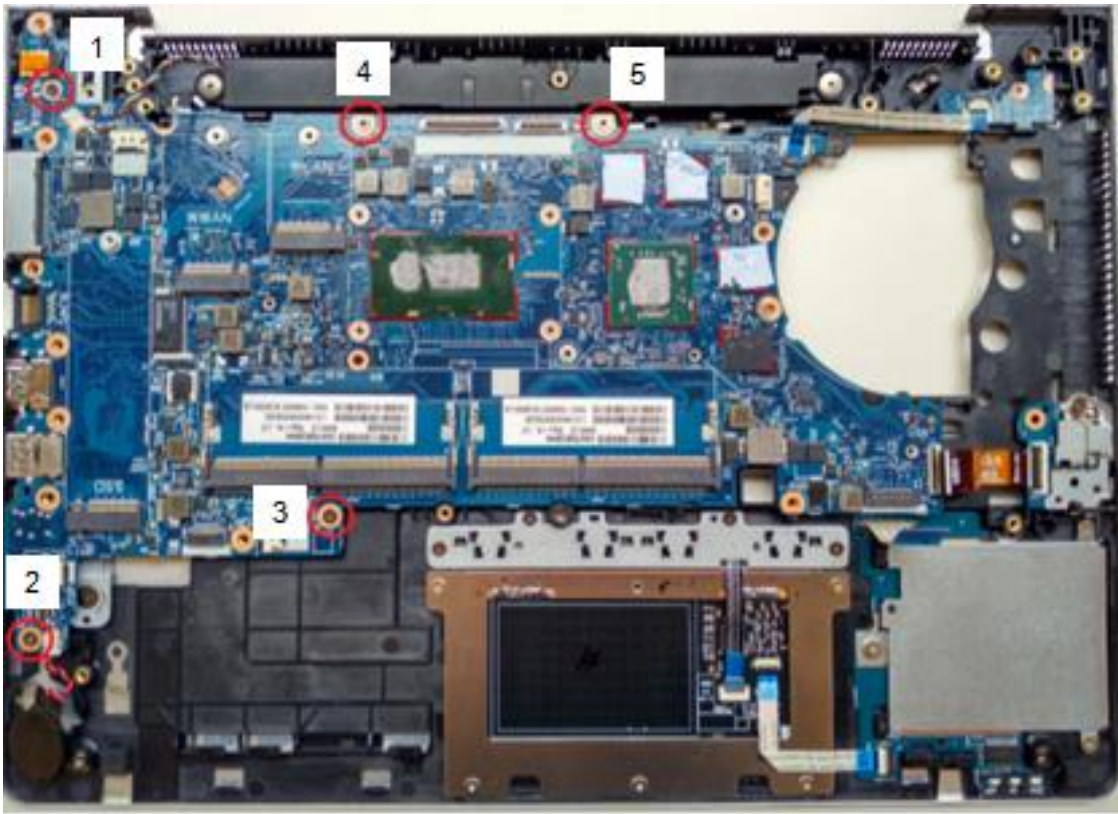
Ver. : 1.00 编辑日期:2019/4/3

步骤 :

1. Remove MB screws M2.0*3.0(6052B0302601)*5

❖ Torque : 1.5 ± 0.2 kgf · cm

❖ No stripped screws



注意事项：如有异常，请立即通知领班或助理。

治具清单(治具规格)	数量	治具清单(治具规格)	数量
十字螺丝起子	1		

制表： 黄雅君 发行部门： 工业工程课



作业指导书

Document No. : Crescent & Tenjin 拆机SOP

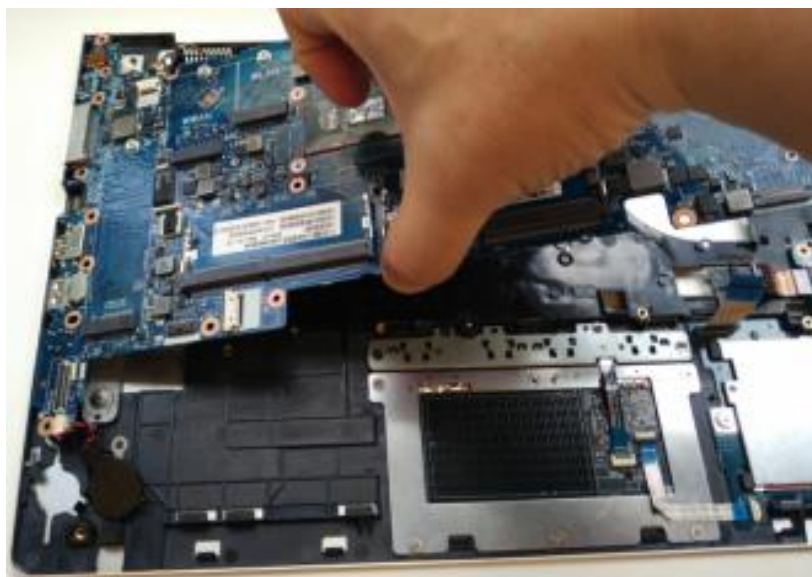
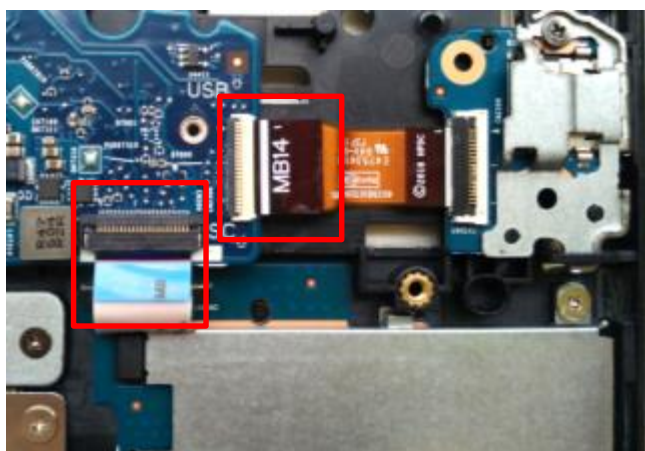
站 别: 16(1/1)

作业名称 : Disassemble SMC FFC/MB

Ver. : 1.00 编辑日期:2019/4/3

步骤 :

1. Disassemble Smart Card FFC和USB FPC
2. Tilt the MB about 30 degrees and take it out of the TOP



注意事项：如有异常，请立即通知领班或助理。

治具清单(治具规格)	数量	治具清单(治具规格)	数量



作业指导书

Document No. : Crescent & Tenjin 拆机SOP

站 别: 17(1/1)

作业名称 : Disassemble Finger Printer

Ver. : 1.00 编辑日期:2019/4/3

步骤 :

1. Disassemble Finger Pinter M2.0*2.0(6052B0156301)* 1
 - ❖ Torque : $1.5 \pm 0.2 \text{ kgf} \cdot \text{cm}$
 - ❖ No stripped screws
2. Remove the dummy finger/finger Pinter from the TOP



注意事项：如有异常，请立即通知领班或助理。

治具清单(治具规格)	数量	治具清单(治具规格)	数量
十字螺丝起子	1		

制表： 黄雅君 发行部门： 工业工程课



作业指导书

Document No. : Crescent & Tenjin 拆机SOP

站 别: 18(1/1)

作业名称 : Disassemble the SMC screws

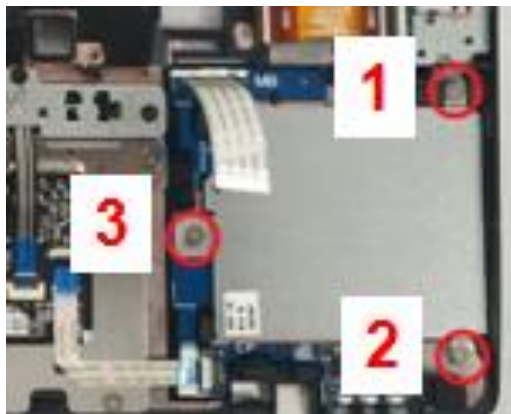
Ver. : 1.00 编辑日期:2019/4/3

步骤 :

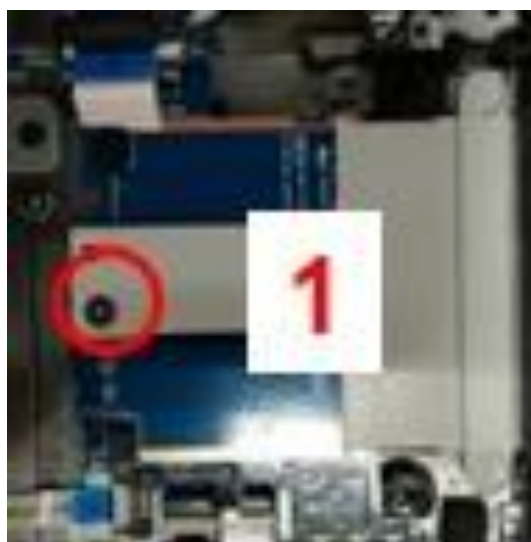
1. Disassemble the SMC screws M2.0*2.0(6052B0156201)*3 and remove the SMC/B from the TOP

❖ Torque : 1.5 ± 0.2 kgf · cm

❖ No stripped screws



Smartcard



dummy Smartcard

注意事项：如有异常，请立即通知领班或助理。

治具清单(治具规格)	数量	治具清单(治具规格)	数量
十字螺丝起子	1		



作业指导书

Document No. : Crescent & Tenjin 拆机SOP

站 别: 19(1/1)

作业名称 : Disassemble the Speaker screws

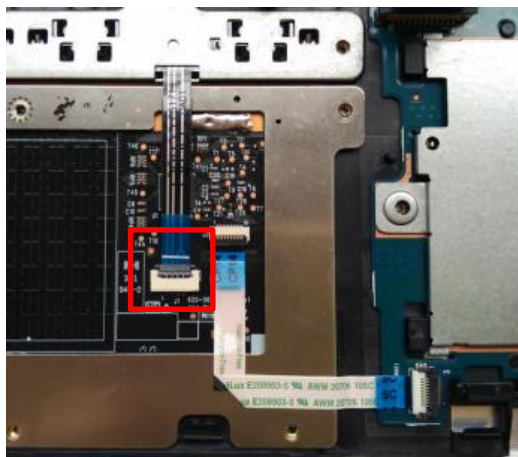
Ver. : 1.00 编辑日期:2019/4/3

步骤 :

1. Disassemble pick button FPC CNTR
2. Disassemble thumb screws M2.0*2.0 (6052B0156301)*2

❖ Torque : 1.5 ± 0.2 kgf · cm

❖ No stripped screws



注意事项：如有异常，请立即通知领班或助理。

治具清单(治具规格)	数量	治具清单(治具规格)	数量
十字螺丝起子	1		

制表： 黄雅君 发行部门： 工业工程课



作业指导书

Document No. : Crescent & Tenjin 拆机SOP

站 别: 20(1/1)

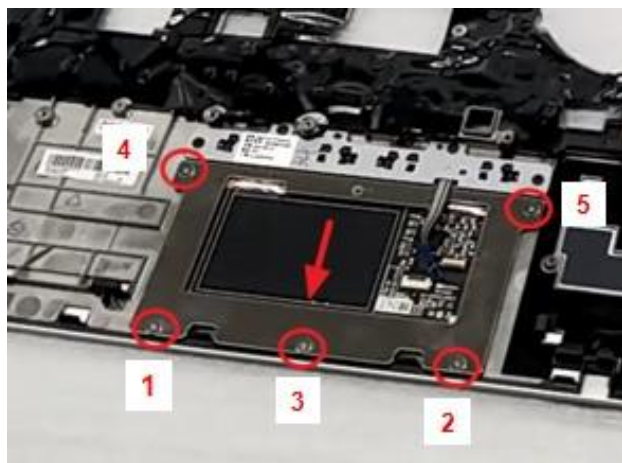
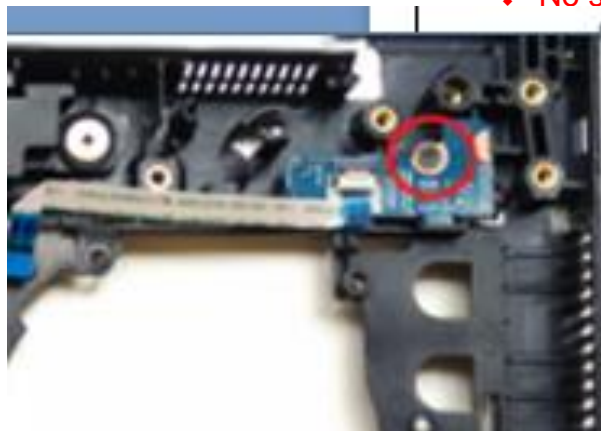
作业名称 : Disassemble screws of Power/B,pick button Tor. : 1.00 编辑日期:2019/4/3

步骤 :

1. Disassemble pick button FPC CNTR
2. Disassemble Power/B screws M2.0*3.0(6052B0302601)*1 and take out Power/B
3. Disassemble click pad screws M2.0*3.0 (6052B0156201))*5 and take out click pad

❖ Torque : $1.5 \pm 0.2 \text{ kg} \cdot \text{cm}$

❖ No stripped screws



注意事项：如有异常，请立即通知领班或助理。

治具清单(治具规格)	数量	治具清单(治具规格)	数量
十字螺丝起子	1		



作业指导书

Document No. : Crescent & Tenjin 拆机SOP

站 别: 21(1/1)

作业名称 : Disassemble Clickpad screws

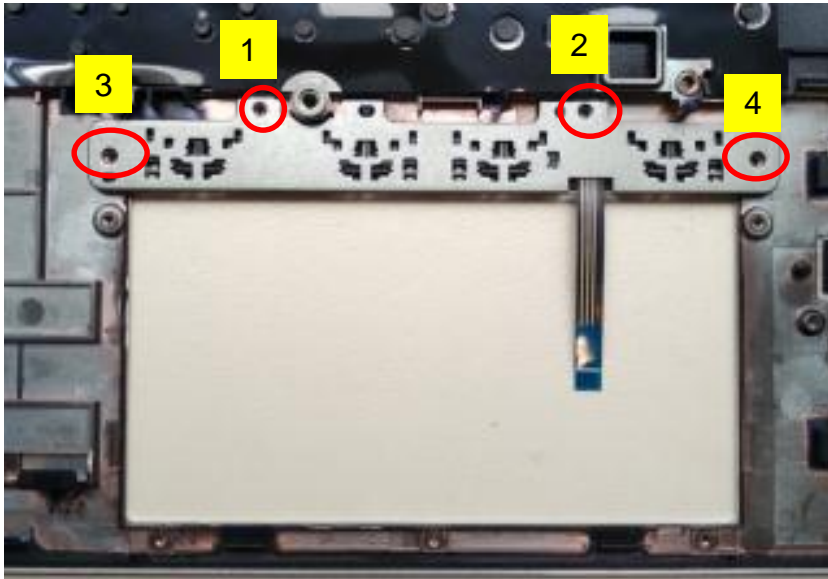
Ver. : 1.00 编辑日期:2019/4/3

步骤 :

1. Disassemble M2.0*2.0 screws(6052B0302601)*4 and take out pick Button

❖ Torque : $1.5 \pm 0.2 \text{ kgf} \cdot \text{cm}$

❖ No stripped screws



注意事项：如有异常，请立即通知领班或助理。

治具清单(治具规格)	数量	治具清单(治具规格)	数量
十字螺丝起子	1		

制表： 黄雅君 发行部门： 工业工程课



作业指导书

Document No. : Crescent & Tenjin 拆机SOP

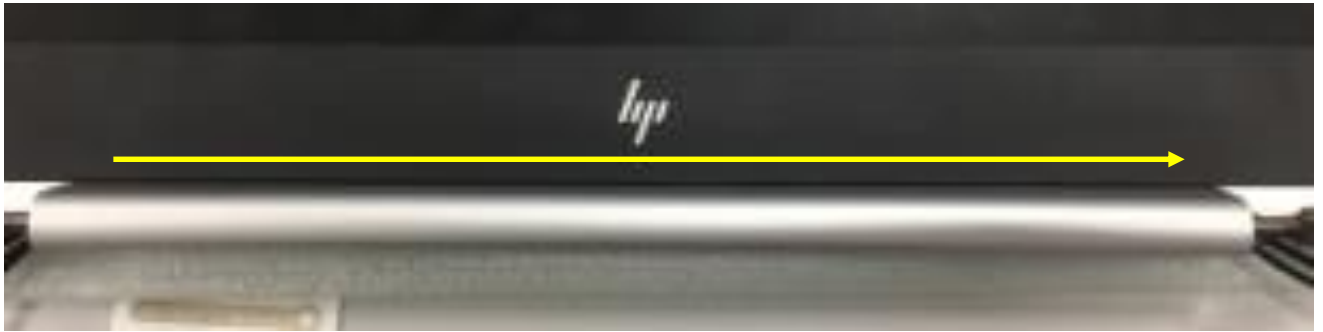
站 别: 22(1/1)

作业名称 : Disassemble Hinge cap

Ver. : 1.00 编辑日期:2019/4/3

步骤 :

1. Remove the Hinge cap from the A Cover



注意事项：如有异常，请立即通知领班或助理。

治具清单(治具规格)	数量	治具清单(治具规格)	数量

制表： 黄雅君 发行部门： 工业工程课



作业指导书

Document No. : Crescent & Tenjin 拆机SOP

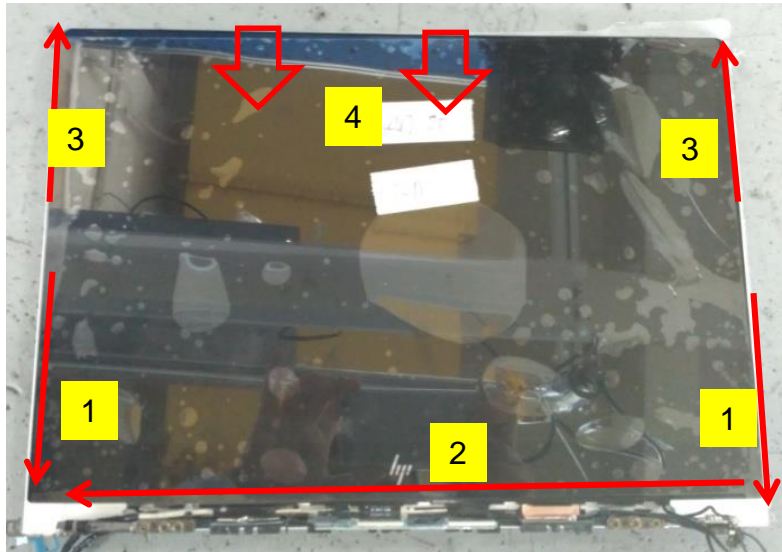
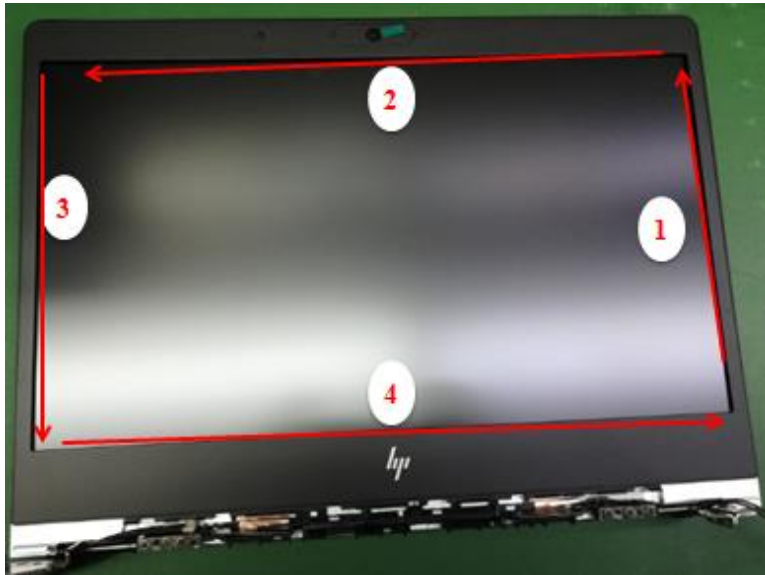
站 别: 23(1/1)

作业名称 : Disassemble Bezel

Ver. : 1.00 编辑日期:2019/4/3

步骤 :

1. Remove the bezel from the inside of A Cover



注意事项：如有异常，请立即通知领班或助理。

治具清单(治具规格)	数量	治具清单(治具规格)	数量



作业指导书

Document No. : Crescent & Tenjin 拆机SOP

站 别: 24(1/1)

作业名称 : Disassemble Panel screws

Ver. : 1.00 编辑日期:2019/4/3

步骤 :

1. Disassemble Panel screws M2.0*2.0(6052B0156201)*4

❖ Torque : 2.0 ± 0.2 kgf · cm

❖ No stripped screws



注意事项：如有异常，请立即通知领班或助理。

治具清单(治具规格)	数量	治具清单(治具规格)	数量
十字螺丝起子	1		

制表： 黄雅君 发行部门： 工业工程课



作业指导书

Document No. : Crescent & Tenjin 拆机SOP

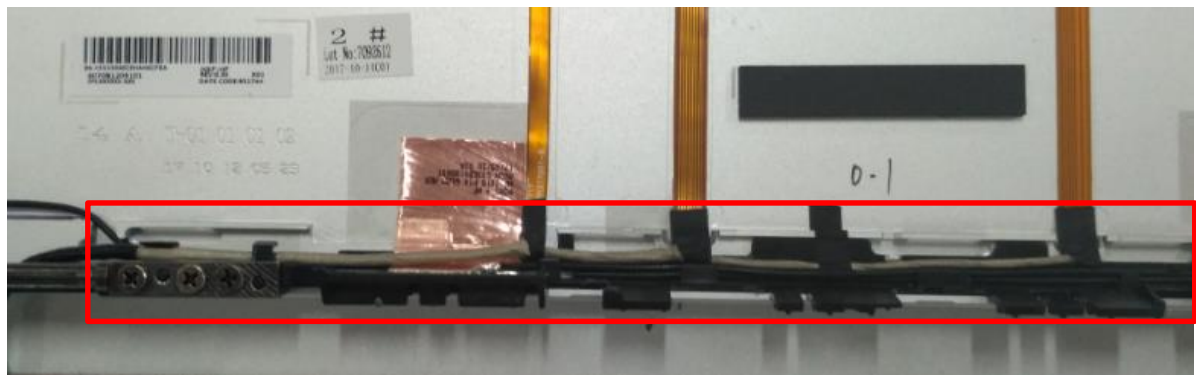
站 别: 25(1/1)

作业名称 : Disassemble Panel CNTR

Ver. : 1.00 编辑日期:2019/4/3

步骤 :

1. Disassemble Panel CNTR
2. Remove camera cable from cable hook of A cover



注意事项：如有异常，请立即通知领班或助理。

治具清单(治具规格)	数量	治具清单(治具规格)	数量



作业指导书

Document No. : Crescent & Tenjin 拆机SOP

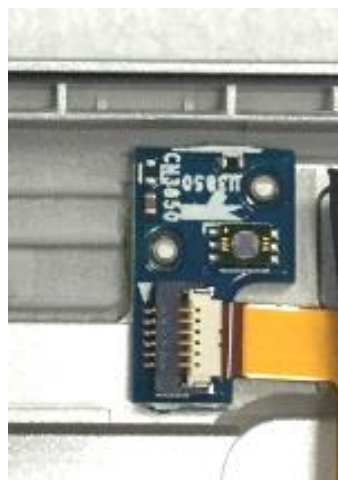
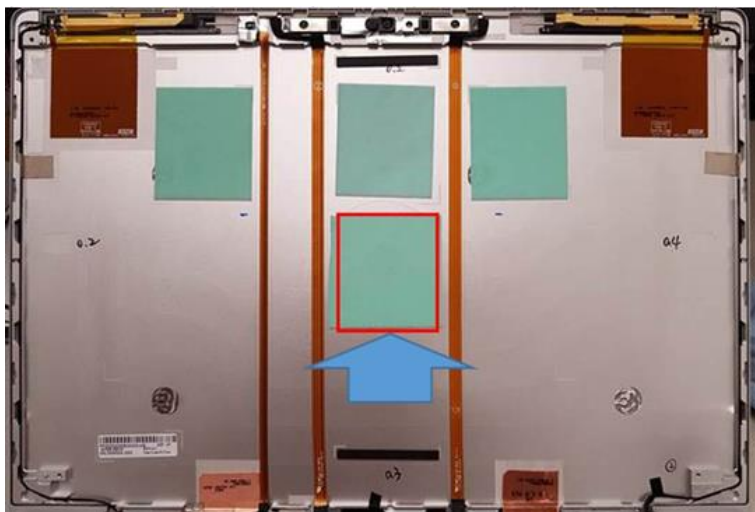
站 别: 26(1/1)

作业名称 : Disassemble Camera

Ver. : 1.00 编辑日期:2019/4/3

步骤 :

1. Disassemble camera cable
2. Disassemble camera, ALS/B, MIC/B from A cover



注意事项：如有异常，请立即通知领班或助理。

治具清单(治具规格)	数量	治具清单(治具规格)	数量



作业指导书

Document No. : Crescent & Tenjin 拆机SOP

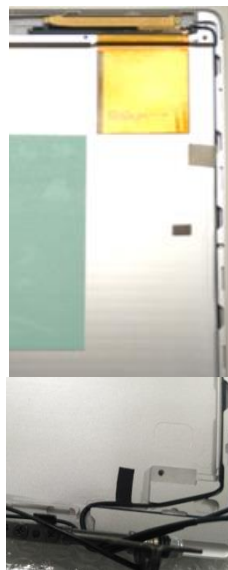
站 别: 27(1/1)

作业名称 : Disassemble ANTENNA

Ver. : 1.00 编辑日期:2019/4/3

步骤 :

1. Disassemble WLAN ANTENNA from the A cover
2. Disassemble WWAN ANTENNA from the A cover



注意事项：如有异常，请立即通知领班或助理。

治具清单(治具规格)	数量	治具清单(治具规格)	数量



作业指导书

Document No. : Crescent & Tenjin 拆机SOP

站 别: 28(1/1)

作业名称 : Disassemble HINGE screws

Ver. : 1.00 编辑日期:2019/4/3

步骤 :

1. Disassemble the left and right hinge screws M2.5*10 (6052A0028701)*6, and take off the Hinge

❖ Torque : $3.0 \pm 0.2 \text{ kgf} \cdot \text{cm}$

❖ No stripped screws



图二



注意事项：如有异常，请立即通知领班或助理。

治具清单(治具规格)	数量	治具清单(治具规格)	数量
十字螺丝起子	1		