



ASUS Education Series HIGHER EDUCATION SOLUTIONS GUIDE



ASUS Business 
EDUCATION



HIGHER EDUCATION: TRENDS AND CHALLENGES

Technology is rapidly changing the way students learn and the way educators teach in the 21st century. Below are several trends and recent challenges that face modern education institutions. Education administrators increasingly require innovative education solutions to adapt to change, and ASUS provides the education solutions to overcome these challenges, harness trends and empower students, educators and learning institutions.

Remote learning

As the COVID-19 pandemic continues, research shows that over 1.2 billion children around the world are out of the classroom¹. In 2020, many schools are resorting to remote learning, which means students of all ages are relying on digital platforms for learning.

Mobility

In the age of wireless internet and mobile devices, students around the world are able to access course materials anytime and anywhere. Additionally, out-of-school learning opportunities such as field trips and workshops provide students with hands-on, practical learning experiences.

Augmented Reality and Virtual Reality

According to a report by Goldman Sachs, global revenue for VR and AR educational software is expected to reach \$700 million by 2025². As gamified AR and VR learning platforms grow in number, more and more students are engaging in interactive, immersive experiences that encourage greater understanding by providing opportunities to apply concepts.

Cloud Collaborative Learning

Online learning programs and value-added learning software applications such as Google Classroom and Blackboard Learn are becoming more popular and widely utilized. Educators are increasingly likely to use these technologies to promote teamwork and collaboration on projects for student-led learning.

STEAM Education

STEAM learning empowers students to explore and develop critical thinking skills, communication skills, problem solving and creativity in modern contexts. Schools are constantly developing STEAM education methods, and new tools and technologies enable students to learn coding, design and computer skills for modern higher education.

Cybersecurity

In 2020, the education sector has been a major target for cybercriminals. Hacking, malware and phishing threats continue to increase the risk of financial loss and system disruption. Therefore, an important question for each network administrator to consider is how to upgrade the school's system to keep data safe and protect students from inappropriate or harmful content online.

1. <https://www.weforum.org/agenda/2020/04/coronavirus-education-global-covid19-online-digital-learning/>

2. <https://www.goldmansachs.com/insights/pages/technology-driving-innovation-folder/virtual-and-augmented-reality/report.pdf>



WHY ASUS?

ASUS is dedicated to solving the unique challenges facing today's students and educators. We are here to help cultivate the minds of the next generation with a comprehensive, student-centered product portfolio that includes Chromebooks, Windows-based laptops, desktops, AiO PCs and software to enable progressive and innovative learning in an ever-changing world.



Reliability

The quality and durability needed to stay productive

ASUS laptops provide reliable performance and durability. With high-quality processors¹ suitable for demanding coursework, and built to surpass demanding military-grade MIL-STD-810G durability standards, ASUS devices are ready for any assignment.



Innovation

Unleash student creativity with the power of technology

ASUS ProArt workstations¹ enable students to learn and explore in a completely new way with VR, providing immersive learning experiences, wherever students are. The Chromebook Flip series features an innovative 360° ErgoLift hinge¹ for flexible learning and a user-friendly stylus¹ for easily and intuitively noting ideas.



Mobility

Empower remote learning with tools

ASUS combines powerful connectivity with long battery life² for seamless learning and portability that empowers students and educators to access course materials anytime, anywhere. ASUS also delivers cutting-edge AI noise-canceling technology¹ and supports cloud-based learning tools, such as Google's G Suite, Microsoft Office 365 and Microsoft Teams, to ensure optimum e-learning experiences.



Security

Ultimate protection with multilayered defense

ASUS products provide comprehensive hardware- and software-based security features—ranging from physical hardware protection to identity security—to protect against unauthorized access and cyberattacks.



IT Management

Less downtime, more learning time

ASUS is your school's partner for efficient device and classroom technology management. Routine device maintenance is simple with software such as ASUS Control Center and AI Recovery¹, and the tool-free¹, modular design¹ of ASUS laptops make upkeep easy. Google Classroom, Microsoft Whiteboard and Windows Autopilot streamline classroom management, as teachers can easily track student progress and work together with students.



Premium Support & Service

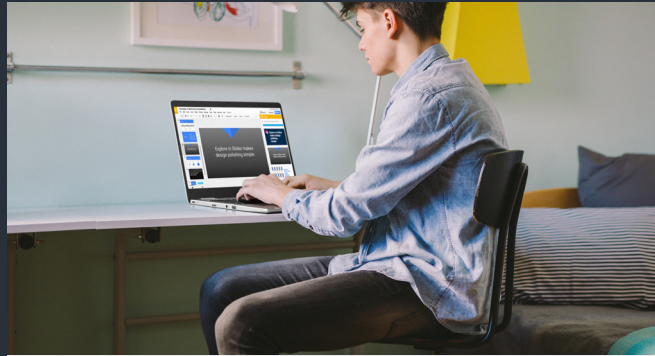
Education with peace of mind

ASUS premium care services go beyond the standard warranty to assure maximum protection with minimal effort. The MyASUS software service helps you to quickly contact ASUS after-sales customer service online for support, providing diagnostic help and effective solutions, including in Windows Recovery Environment (WinRE).

1. Specifications may vary by model

2. Actual battery life depends on usage, specifications, applications and environment, among other factors.

BENEFITS FOR ALL



Students

ASUS solutions help prepare students for the future with innovative learning experiences. With ASUS technology, students can access online learning resources, engage in interactive and collaborative projects, enjoy immersive learning, and develop skills that are essential in the digital age.



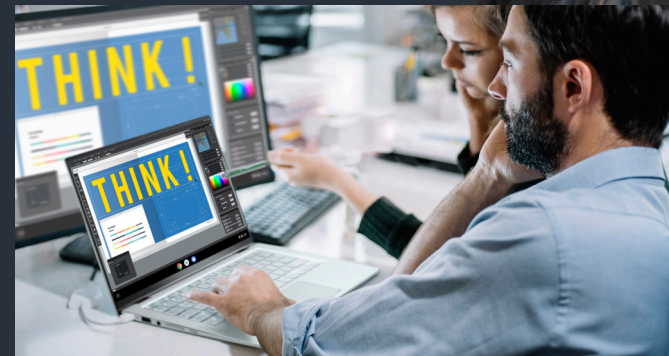
Teachers

ASUS innovations empower teachers to increase student engagement, enhance students' skills, and encourage collaboration. With easy management solutions, teachers can keep classrooms organized and spend more time teaching.



IT administrators

ASUS solutions help IT administrators improve efficiency and minimize downtime, so learning can continue uninterrupted. Our hardware and software features help IT administrators ensure that all data and information is controlled and secure. IT administrators can also enjoy fast response times and consistent quality of after-sales service.



School administrators

Schools are under considerable pressure to swiftly invest in educational technology that supports virtual and remote learning. ASUS solutions enable school administrators to effectively improve teaching productivity and learning outcomes while keeping IT management costs low.





BENEFITS OF CHROMEBOOKS

Unlock limitless learning with ASUS Chromebooks

ASUS Chromebooks make learning more effective and engaging.

Some key features include:

- Google Classroom assists teachers with class management
- The Google Admin Console centrally manages hundreds of thousands of devices
- Google Play Store allows you to discover millions of apps
- G Suite provides productivity apps that keep students connected and empower students to collaborate and communicate
- Learning materials can be accessed on any device, from anywhere, online or offline
- Simplified deployment gives IT administrators access to device policies
- 24/7 IT admin support at no additional cost
- Advanced security and automatic updates ensure that school data is always safe and secure



CHROMEBOOK

With the right tools, students can achieve any goal. In partnership with Google, ASUS has created Chrome-books with versatile features that teachers and students can use to create and collaborate.



US MIL-STD 810G
military grade
durability



Modular product
design



NanoEdge Display



Thin and light



Stylus support



C433

- Intel® Core™ i5-8200Y / m3-8100Y processor
- Chrome OS keeps it new and fast
- 14" (16:9) Full HD (1920 x 1080) multi-touch four-sided NanoEdge display with 85% screen-to-body ratio
- Up to 8GB LPDDR3 1867MHz RAM
- Up to 128GB eMMC Storage
- 2 x USB 3.2 Gen 1 Type-C™ support display & support power delivery, 1 x USB 3.2 Type A, and 1 x microSD card reader
- Up to 10 hours¹ battery life
- 178° wide-view technology with optional touchscreen
- Weights starting at 1.5 kg² with stylish metallic design



C434

- Intel® Core™ i7-8500Y / i5-8200Y / m3-8100Y processor
- Chrome OS keeps it new and fast
- 14" (16:9) Full HD (1920 x 1080) multi-touch four-sided NanoEdge display with 87% screen-to-body ratio
- Up to 8GB LPDDR3 1867MHz RAM
- Up to 128GB eMMC Storage
- 2 x USB 3.2 Gen 1 Type-C™ support display & support power delivery, 1 x USB 3.2 Type-A, and 1 x microSD card reader
- Up to 10 hours¹ battery life
- 178° wide-view technology with optional touchscreen
- Weights starting at 1.45 kg² with stylish metallic design



C523

- Up to Intel® Pentium® Quad-Core N4200 processor
- Chrome OS keeps it new and fast
- 15.6" (16:9) LED-backlit HD NanoEdge display with 80% screen-to-body ratio
- Up to 64 GB eMMC Storage
- 2 x USB 3.2 Gen 1 Type-A, 2 x USB 3.2 Gen 1 Type-C™ with display and power delivery support
- Up to 10 hours¹ battery life
- Weights starting at 1.43 kg² with stylish metallic design
- 180 degree lay-flat hinge
- Optional touchscreen



C423

- Up to Intel® Core™ i5 8200Y processor
- Chrome OS keeps it new and fast
- 14.0" (3:2) LED-backlit HD NanoEdge display with 78% screen-to-body ratio
- Up to 128 GB eMMC Storage
- 1 x USB 3.2 Gen 1 Type-A, 2 x USB 3.2 Gen 1 Type-C™ with display and power delivery support
- Up to 10 hours¹ battery life
- Weights starting at 1.33 kg² with stylish metallic design
- 180 degree lay-flat hinge
- Optional touchscreen



C223

- Latest dual-core Intel processor
- Chrome OS keeps it new and fast
- 11.6" (3:2) HD Anti-glare display
- Up to 32 GB eMMC Storage
- Up to 4GB LPDDR4 RAM
- 1 x USB 3.2 Gen 1 Type-A, 2 x USB 3.2 Gen 1 Type-C™ with display and power delivery support
- Up to 10 hours¹ battery life
- Weights starting at 0.99 kg²
- Ultraportable with smaller than an A4 sheet

1. Actual battery life depends on usage, specifications, applications and environment, among other factors.
2. Specifications may vary by region and country.





BENEFITS OF WINDOWS-BASED LAPTOPS

Unlock limitless learning with ASUS Windows-based laptops

The world is changing faster than ever – as are the skills students will need to be life-ready by the time they graduate. ASUS Windows 10 laptops are affordable and easy to manage. With technology that transforms classroom time, they allow educators to focus on delivering personalised learning experiences that help enable better learning outcomes.

ASUS Windows 10 laptops help prepare students for the future with skills in demand by employers. They empower students to navigate their learning and develop social and emotional skills, with free tools available to deliver tailored learning in key subjects like reading, writing, and mathematics.

Moving to a virtual classroom

Creating an online classroom is an important step in moving to a remote learning environment. Microsoft Teams for Education provides an online classroom so students and teachers can find new ways to continue to focus on learning — free for schools and universities.

Empowering the students of today to create the world of tomorrow with fast and hardworking features, and new ways to interact with your Windows 10 laptop.

With Windows Autopilot, you can quickly transform a brand new device into a classroom-ready state—or reset existing devices to remove apps, settings and personal files—without physically having to touch the device.

Windows Hello

is the password-free sign-in that gives you the fastest, most secure way to unlock your Windows devices using facial recognition, fingerprint, or companion devices

Microsoft Whiteboard

is a collaborative, digital whiteboard that makes it easy for your class to come together to share ideas in real time.

WINDOWS-BASED LAPTOP

With the right tools, students can achieve any goal. ASUS has created Windows-based laptops with versatile features that teachers and students can use to create and collaborate.



US MIL-STD 810G
military grade
durability



Splash-proof
keyboard



AI Noise-canceling
technology



All-day long
battery life



Business-grade security



ExpertBook B1400

- Intel® Core™ i3-1115G4 / i5-1135G7 / i7-1165G7
- Windows 10 Pro
- 14" (16:9) Full HD, three-sided NanoEdge display with 84% screen-to-body ratio
- Up to NVIDIA® GeForce® MX330
- DDR4 4G/8G/16G onboard + 1 DIMM
- Up to 2TB HDD + 1TB PCIe SSD
- New Military Grade MIL-STD 810H
- 1 x Thunderbolt™ 4.0 support display & support power delivery, 2 x USB 3.2 Type A, 1 x USB 2.0, 1 x HDMI and 1 x SD card reader
- Wi-Fi 6 (802.11ax) with Wi-Fi Master technology
- Only 1.45 kg¹ light with aluminum alloy top case, and 19.2 mm thin



ExpertBook B1500

- Intel® Core™ i3-1115G4 / i5-1135G7 / i7-1165G7
- Windows 10 Pro
- 15.6" (16:9) Full HD, three-sided NanoEdge display with 90% screen-to-body ratio
- Up to NVIDIA® GeForce® MX330
- Up to 32GB DDR4
- Up to 2TB HDD + 1TB PCIe SSD
- New Military Grade MIL-STD 810H
- 1 x Thunderbolt™ 4.0, U1 x USB 3.2 Type A, USB 2.0, 1 x HDMI and 1 x SD card reader
- Up to Wi-Fi 6 (802.11ax) with Wi-Fi Master technology
- Only 1.72 kg¹ light with aluminum alloy top case, and 19.4 mm thin



ExpertBook B3400

- Intel® Core™ i3-1115G4 / i5-1135G7 / i7-1165G7
- Windows 10 Pro
- 14" (16:9) Full HD, four-sided NanoEdge display with 84% screen-to-body ratio
- Up to NVIDIA® GeForce® MX450
- DDR4 4G/8G/16G onboard + 1 DIMM, Maximize 48GB
- Up to 2TB M.2 PCIe SSD
- New Military Grade MIL-STD 810H
- 2 x Thunderbolt™ 4.0, 1 x USB 3.2 Type A, 1 x USB 2.0, 1 x HDMI and 1 x Micro SD card reader
- Up to Wi-Fi 6 (802.11ax) with Wi-Fi Master technology
- Only 1.42 kg¹ light with all-metal design, and 16.95 mm thin



ExpertBook B3500

- Intel® Core™ i3-1115G4 / i5-1135G7 / i7-1165G7
- Windows 10 Pro
- 15.6" (16:9) Full HD, four-sided NanoEdge display with 90% screen-to-body ratio
- Up to NVIDIA® GeForce® MX450
- DDR4 4G/8G/16G onboard + 1 DIMM, Maximize 48GB
- Up to 2TB M.2 PCIe SSD
- New Military Grade MIL-STD 810H
- 2 x Thunderbolt™ 4.0, 1 x USB 3.2 Type A, 1 x USB 2.0, 1 x HDMI and 1 x Micro SD card reader
- Up to Wi-Fi 6 (802.11ax) with Wi-Fi Master technology
- Only 1.71 kg¹ light with all-metal design, and 17.1 mm thin

DESKTOP

Unlock limitless learning with ASUS devices

ASUS offers a wide range of desktop solutions that cater to the diverse needs of teachers and students, providing features to ensure rich learning experiences.



ASUS World's
No. 1 motherboard



100% solid
capacitor



Full expandability



Designed for tool-free
upgrading and servicing



Rock-solid security

Specifications may vary by model.



ExpertCenter D300 series

- Up to 10th Gen Intel® Core™ i7® Processor
- Intel® H410 chipset
- Windows 10 Pro / Home
- Up to NVIDIA® GeForce® GTX 1650
- 2 x DIMM SLOT, DDR4 2933MHz, support max.64GB
- Up to 4TB 7200rpm HDD, up to 1TB PCIe® 3.0 x4 SSD
- Up to Wi-Fi 6(Gig+)(802.11ax)+Bluetooth 5.0 (Dual band) 2x2
- Legacy support: Serial port & Parallel port (Optional)
- TPM 2.0(Optional), Kensington lock slot



ExpertCenter D500 series

- Up to 10th Gen Intel® Core™ i7® Processor
- Intel® H410 chipset
- Windows 10 Pro / Home
- Up to NVIDIA® GeForce® RTX2060
- 2 x DIMM SLOT, DDR4 2933MHz, support max.64GB
- Up to 3TB 7200rpm HDD, up to 2TB PCIe® 3.0 x4 SSD
- Tool-free chassis design for hassle-free maintenance and upgrades(D500MA, D500SA)
- Up to Wi-Fi 6(Gig+)(802.11ax)+Bluetooth 5.0 (Dual band) 2x2
- Legacy support: Serial port & Parallel port (Optional)
- Smart card reader & SD card reader(Optional)
- TPM 2.0(Optional), Kensington lock slot



ExpertCenter D700 series

- Up to 10th Gen Intel® Core™ i7® Processor
- Intel® B460 chipset
- Windows 10 Pro / Home
- Up to NVIDIA® GeForce® RTX2070S
- 4 x DIMM SLOT, DDR4 2933MHz, support max.128GB
- Up to 4TB 7200rpm HDD, up to 2TB PCIe® 3.0 x4 SSD
- Tool-free chassis design for hassle-free maintenance and upgrades (D700MA, D700SA)
- Up to Wi-Fi 6(Gig+)(802.11ax)+Bluetooth 5.0 (Dual band) 2x2
- Legacy support: Serial port & Parallel port (Optional)
- Smart card reader & SD card reader(Optional)
- TPM 2.0(Optional), Kensington lock slot

ALL-IN-ONE PC

Unlock limitless learning with ASUS AiO PCs

ASUS All-in-One PCs feature space-saving design, a stunning NanoEdge display, a perfectly balanced hinge, and powerful performance — all perfectly suited to a variety of student needs and learning environments.



Best-in-class performance



Harman/kardon certificated

4K

4K UHD resolution



NanoEdge display



Ultra-fast connectivity



Zen AiO 22 A5200

- Up to Intel® Core™ i7-10510U processor
- Windows 10 Pro
- 21.5" LED-backlit, FHD (1920 x 1080) NanoEdge display with 93% screen-to-body ratio and frameless bezel with only 2.8 mm thin
- NVIDIA® GeForce® MX330
- Up to WiFi 6 (802.11ax)
- Up to 1 TB HDD + 2 x 512 GB M.2 NVMe™ PCIe® 3.0 SSD
- Up to 32GB DDR4 2666Mhz
- Harman/kardon certificated dual-speaker
- Optional IR camera with Windows Hello support
- Cortana and Alexa voice control support
- Wall-mount design

Zen AiO 22 M5200

- Up to AMD Ryzen 4000 processor for extreme computing
- Windows 10 Pro
- 21.5" LED-backlit, FHD (1920 x 1080) NanoEdge display with 93% screen-to-body ratio and frameless bezel with only 2.8 mm thin
- Up to WiFi 6 (802.11ax)
- Up to 1 TB HDD + 2 x 512 GB M.2 NVMe™ PCIe® 3.0 SSD
- Up to 32GB DDR4 2666Mhz
- Harman/kardon certificated dual-speaker
- Optional IR camera with Windows Hello support
- Cortana and Alexa voice control support
- Wall-mount design

Zen AiO 24 A5400

- Up to Intel® Core™ i7-10510U processor
- Windows 10 Pro
- 23.8" LED-backlit, Full HD (1920 x 1080), 16:9 aspect
- 2.8 mm-thin1 bezel with 93% screen-to-body ratio
- NVIDIA® GeForce® MX330
- Up to WiFi 6 (802.11ax)
- Up to 1 TB HDD + 2 x 512 GB M.2 NVMe™ PCIe® 3.0 SSD
- Up to 32GB DDR4 2666Mhz
- Harman/kardon certificated dual-speaker
- Optional IR camera with Windows Hello support
- Cortana and Alexa voice control support
- Wall-mount design

Zen AiO 24 M5400

- Up to AMD Ryzen 4000 processor for extreme computing
- Windows 10 Pro
- 23.8" LED-backlit, Full HD (1920 x 1080), 16:9 aspect
- 2.8 mm-thin1 bezel with 93% screen-to-body ratio
- Up to WiFi 6 (802.11ax)
- Up to 1 TB HDD + 2 x 512 GB M.2 NVMe™ PCIe® 3.0 SSD
- Up to 32GB DDR4 2666Mhz
- Harman/kardon certificated dual-speaker
- Optional IR camera with Windows Hello support
- Cortana and Alexa voice control support
- Wall-mount design



PROART WORKSTATION

Unlock limitless learning with ASUS ProArt Workstations

Flexible workstations play a critical role in higher education. With dynamic and reliable computing power, ASUS ProArt series products ensure fast processing speeds and stunning visuals for any course project.



Top-tier
processor



Professional-grade
graphics



ISV certified



Optimized cooling
system



VR support

Specifications may vary by model.



ProArt Station D940MX

- Up to 9th Gen Intel® Core i9-9900K processor
- Windows 10 Pro
- Up to Nvidia GeForce RTX2080 Ti
- Intel® Z390 chipset
- 4 x DIMM slot, DDR4 2666MHz. Support max. 64GB
- Up to 1 x 1TB 2.5" HDD + 1x 512G PCIe Gen 3 x4 SSD
- Front IO : 2 x Thunderbolt 3.2, 2 x USB 3.2 Gen 2 Type A, Back IO : 1 x HDMI, 1 x LAN (RJ-45) port, 4x USB 3.2 Gen 1 Type A
- Independent Software Vendor (ISV) certified
- Smart LED Indicator



ProArt StudioBook 17

- Up to Intel® Xeon® E-2276M processor
- Windows 10 Pro
- Up to NVIDIA GeForce RTX 2060
- Intel® Z390 chipset
- 17" 16:9 LED-backlit WUXGA (1920 x 1200) NanoEdge display
- Up to 64GB DDR4 2666MHz
- Up to 4TB (PCIe® NVMe Gen 3 x4, M.2 SSD x 2)
- 1 x Thunderbolt™ 3 USB-C™ with Display Port 1.4, 3 x USB 3.2 Gen 2 Type-A, 1 x HDMI 2.0
- ASUS SonicMaster Premium with surround-sound
- NumberPad option



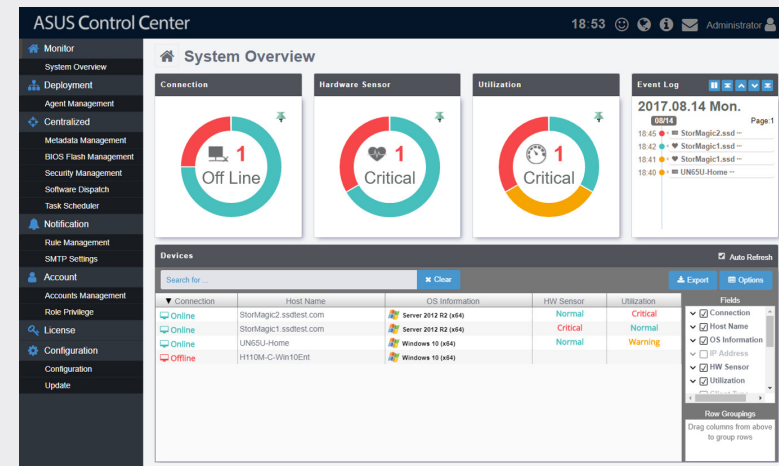
ProArt StudioBook 15

- Intel® Core™ i7-9750H processor
- Windows 10 Pro
- NVIDIA GeForce RTX 2060
- 15.6" LED-backlit UHD (3840 x 2160) 3-sided NanoEdge display
- Up to 48GB DDR4 2666MHz
- Up to 2TB (PCIe® NVMe Gen 3 x4 SSD x 2)
- 1 x USB 3.2 Gen 2 Type-C™ with Display Port, 1 x USB 3.2 Gen 2 Type-A, 2 x USB 3.2 Gen 1 Type-A, 1 x HDMI 2.0
- ESS® Sabre HiFi digital-to-analog converter (DAC) with Hi-Res Audio certification
- Dual-band 2x2 Wi-Fi 6

SOFTWARE

Unlock limitless learning with ASUS software

ASUS software simplifies asset-management processes for IT staff, as well as for students and educators.



ASUS Control Center

Comprehensive centralized IT management

ASUS Control Center is a centralized IT management suite designed to enhance productivity and security by offering a comprehensive set of controls via a user-friendly interface.



HARDWARE & SOFTWARE MONITORING



ADVANCE SEARCH AND GROUPING



TASK SCHEDULER



EFFICIENT ENERGY CONTROL



ENHANCE SECURITY



INTUITIVE USER INTERFACE

ASUS Business Manager

Simple PC management

ASUS Business Manager is a PC-based platform consisting of hardware and firmware that provides unique security and productivity capabilities for educators and students.



SYSTEM BACKTRACK



FILE SHREDDER



MY LOGO



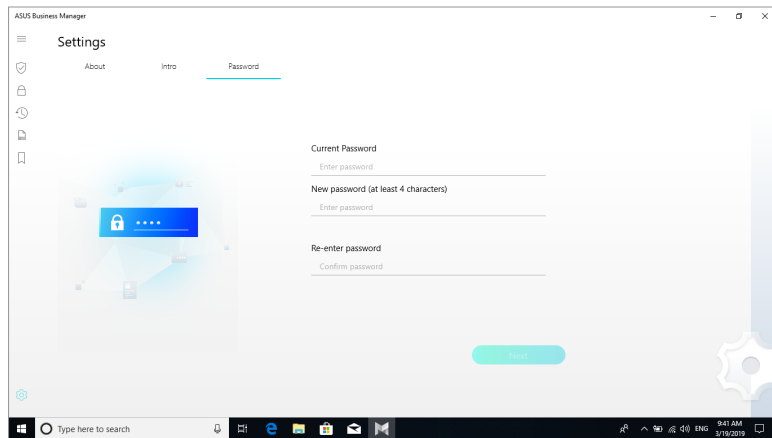
DEVICE LOCK



SECURE DRIVE



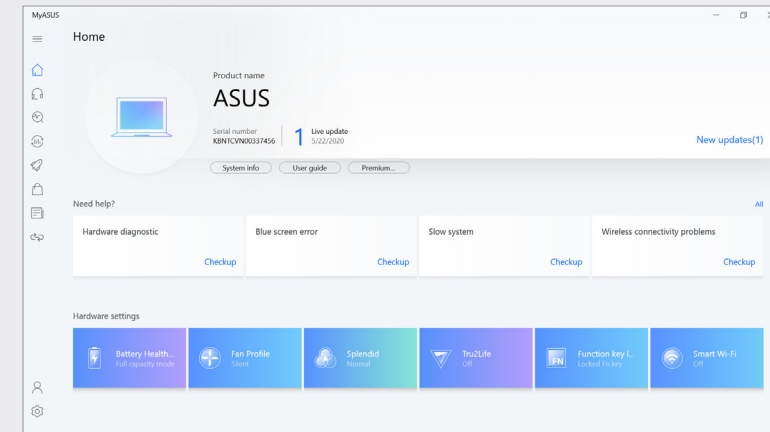
SYSTEM RESTRICTION



MyASUS

One-stop portal of ASUS-developed software tools and services

MyASUS is an exclusive app that helps you easily communicate with customer service, monitor repair status and access product instruction manuals, among other capabilities.



- System Diagnosis
- Hardware settings
- Customer service
- ASUS AppDeals
- Link to MyASUS



AI Recovery

Effectively set up all devices

AI Recovery is software that helps IT administrators create e-classrooms and allows for easy deployment, set-up and recovery of all devices.



ASUS Cloud

Ultimate online resource management

ASUS Cloud is a platform that integrates with multiple learning applications, providing rich and active learning experiences for students while making class management easier for educators. It also allows students and educators to store and access all their learning materials, making sharing as effortless as ever.

ASUS PREMIUM CARE SERVICES

Hassle free, peace of mind for Education.

Asus premium care services go beyond standard warranty, to provide the assurance of maximum protection with minimal effort. It's the peace of mind you need so that you can get things done without compromising productivity or mobility.



MINIMISED
DOWNTIME



INCREASED
EFFICIENCY



REDUCED
COSTS





Comprehensive Support

Nobody knows your devices better than our own Asus hardware experts do. That is why they are only a phone call away to help you get the best out of your devices and assist you when you need support from trouble-shooting, diagnostics and more.



Warranty Extensions

Keep that peace of mind feeling going for up to 5 years¹, with an Asus extended warranty². Ideal if you are planning to deploy your products for a longer period.



Next Business Day (NBD) Repair

Minimise disruptions by investing in NBD service. Eliminate the hassle of supported hardware drop offs and pick-ups.



Laptop Accidental Damage Protection (ADP)

ADP gives you the assurance that should your laptop be subject to accidental damage from events such as liquid spills, electrical surges, drops and falls, you will be covered, with no excess to pay.



Keep My Drive

In the unlikely event that the original storage drive requires replacement, Keep My Drive allows you to retain the defective drive and receive a replacement, installed by an authorised Asus technician.



Battery Back Up

Extend the warranty of your battery to match the warranty of the laptop with Battery Back Up. You will be entitled to one battery replacement during the warranty period, as a result of any manufacturing defects.

1. Service and warranty coverage may vary depending on country and territory and may change without notice. Please check with your supplier for exact offers.

2. Must be purchased and activated within 90 days of your ASUS product purchase date.

ASUS EDUCATION ECOSYSTEM PARTNER

Pave the way for education with ASUS Ecosystem Partner



Microsoft

ASUS and Microsoft share the goal of empowering every student to reach his or her potential. With Windows Autopilot, IT administrators can quickly transform a new device to one that's classroom-ready, reset existing devices to remove apps, change settings, or access personal files — and they can do all of this remotely. The collaborative and digital Microsoft Whiteboard brings any class to life, allowing members to share ideas in real time. Microsoft Teams for Education plays a vital role in remote communication and class discussions in online classrooms.



Google

ASUS and Google are working together to make learning and collaborating easier. G Suite brings together all the favorite productivity apps of students, including Google Docs™, Google Slides™ and Hangouts™, to keep everyone connected and productive. Google Classroom gives teachers easy-to-use tools to instantly create classes, distribute assignments, provide feedback and monitor student progress. In addition, the automatic updates and multi-layered security offered by Chrome OS keeps data safe.



Intel

Equipped with powerful Intel® processors and Wi-Fi-enhancing technology, ASUS devices offer the very best in performance, efficiency and connectivity. ASUS devices powered by Intel provide performance and reliability to empower students with unparalleled learning tools and deliver seamless learning experiences.



AMD

Powered by AMD processors, ASUS education devices deliver optimized performance to meet the needs of students and educators alike, empowering students to reach their full potential.



ENDLESS

Endless OS

The goal of Endless OS is to enable people to harness the power of computing, anywhere. ASUS and Endless OS combine hardware and software to make it easy and free to access valuable preloaded resources for students.

FOR MORE INFORMATION ABOUT ASUS EDUCATION SOLUTIONS, PLEASE CONTACT YOUR LOCAL SALES REPRESENTATIVE



**Tony
Hospes**

Commercial Business
Manager

NSW/ACT
0417 655 544
Tony_Hospes@asus.com

**Domenic
Torre**

Commercial Business
Manager

VIC/TAS
0412 660 064
Domenico_Torre@asus.com



**Saeed
Royan**

Commercial Business
Manager

QLD
0409 816 642
Saeed1_Royan@asus.com



**Jim
Lee**

Commercial Business
Manager

WA/SA/NT
0418 261 175
Jim_Lee@asus.com



**Tony
Hospes**

Head of Commercial
Team

National
0414 909 608
Leon1_Brumen@asus.com

ASUS Education Series



DOWNLOAD
ASUS BUSINESS SOLUTION HIGHER EDUCATION
BROCHURE AT