



# Product End-of-Life Disassembly Instructions

Product Category: Notebooks and Tablet PCs

Marketing Name / Model

[List multiple models if applicable.]

HP Zbook 15u G5 Mobile Workstation

**Purpose:** The document is intended for use by end-of-life recyclers or treatment facilities. It provides the basic instructions for the disassembly of HP products to remove components and materials requiring selective treatment, as defined by EU directive 2002/96/EC, Waste Electrical and Electronic Equipment (WEEE).

## 1.0 Items Requiring Selective Treatment

1.1 Items listed below are classified as requiring selective treatment.

1.2 Enter the quantity of items contained within the product which require selective treatment in the right column, as applicable.

Item Description	Notes	Quantity of items included in product
Printed Circuit Boards (PCB) or Printed Circuit Assemblies (PCA)	With a surface greater than 10 sq cm	1
Batteries	All types including standard alkaline and lithium coin or button style batteries	2
Mercury-containing components	For example, mercury in lamps, display backlights, scanner lamps, switches, batteries	0
Liquid Crystal Displays (LCD) with a surface greater than 100 sq cm	Includes background illuminated displays with gas discharge lamps	1
Cathode Ray Tubes (CRT)		0
Capacitors / condensers (Containing PCB/PCT)		0
Electrolytic Capacitors / Condensers measuring greater than 2.5 cm in diameter or height		0
External electrical cables and cords	power cord	1
Gas Discharge Lamps		0
Plastics containing Brominated Flame Retardants weighing > 25 grams (not including PCBs or PCAs already listed as a separate item above)		0
Components and parts containing toner and ink, including liquids, semi-liquids (gel/paste) and toner	Include the cartridges, print heads, tubes, vent chambers, and service stations.	0
Components and waste containing asbestos		0

Components, parts and materials containing refractory ceramic fibers		0
Components, parts and materials containing radioactive substances		0

## 2.0 Tools Required

List the type and size of the tools that would typically be used to disassemble the product to a point where components and materials requiring selective treatment can be removed.

Tool Description	Tool Size (if applicable)
Screwdriver #1	Electric cross screwdriver
Description #2	TORX T8 (2.31mm)
Description #3	D73 1 * 3.0 * 20 * 40
Description #4	
Description #5	

## 3.0 Product Disassembly Process

3.1 List the basic steps that should typically be followed to remove components and materials requiring selective treatment:

1. Follow steps described in Disassembly instruction (file attached)
2. If parts can be removed without using a tool, remove it first
3. Use correct screwdriver and torque value before unlock the screw.
- 4.
- 5.
- 6.
- 7.
- 8.
- 9.

3.2 Optional Graphic. If the disassembly process is complex, insert a graphic illustration below to identify the items contained in the product that require selective treatment (with descriptions and arrows identifying locations).





# Standard Operation Procedure

Document No. : Computron Trypticon 15" DIS ASS'Y SOP

Station : 1(1/1)

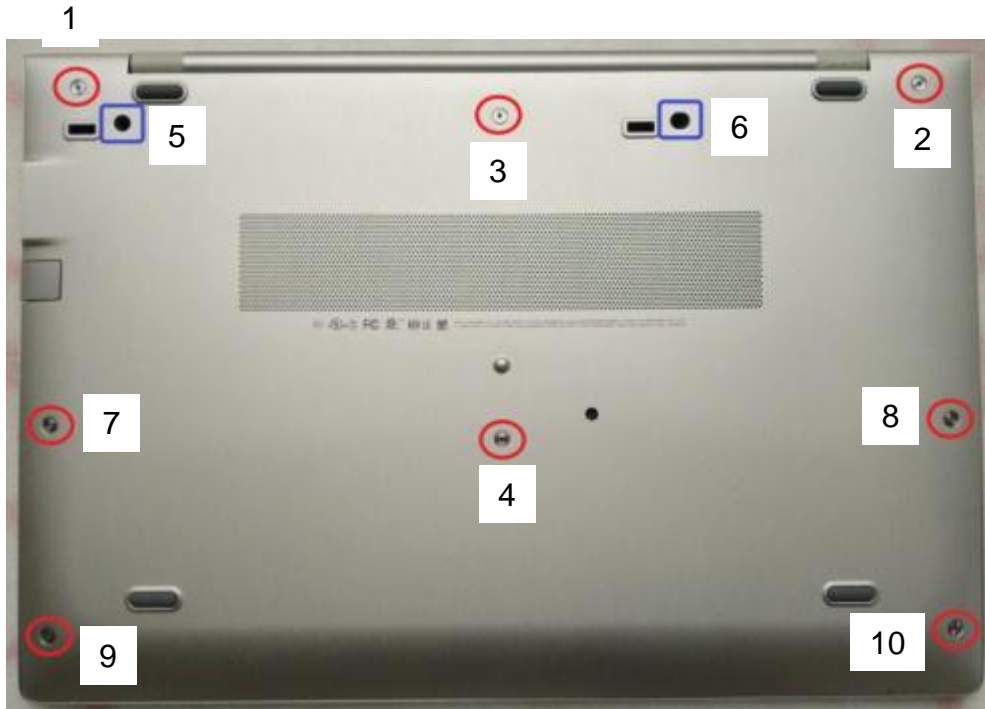
Name : Loosen screw

Ver. : 1.00 Date : 2017/12/18

## Step :

1. Loosen screw\*10.

❖ Torsion :  $2.0 \pm 0.2 \text{ kgf} \cdot \text{cm}$



Notes : If finding anything uncommon, notice foreman or assistant at once.

Holding fixture list (holding fixture standard)	Qty	Holding fixture list (holding fixture standard)	Qty
Electric cross screwdriver	1		

Tabulator : Vick Weng

Auditor : C.S. Lee

Issue department : NPSU-PPE



# Standard Operation Procedure

Document No. : Computron Trypticon 15" DIS ASS'Y SOP

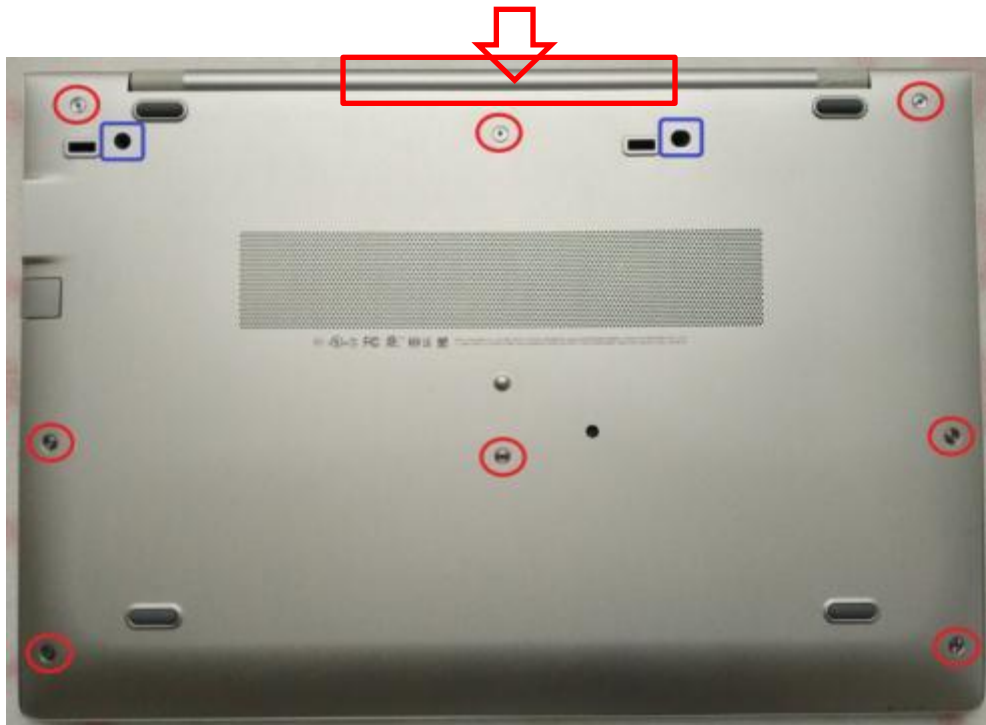
Station : 2(1/1)

Name : Disassemble Bottom Case

Ver. : 1.00 Date : 2017/12/18

## Step :

1. Use plastic stick to disassemble bottom case.



Notes : If finding anything uncommon, notice foreman or assistant at once.

Holding fixture list (holding fixture standard)	Qty	Holding fixture list (holding fixture standard)	Qty
Plastic stick	1		

Tabulator : Vick Weng

Auditor : C.S. Lee

Issue department : NPSU-PPE



# Standard Operation Procedure

Document No. : Computron Trypticon 15" DIS ASS'Y SOP

Station : 3(1/1)

Name : Disassemble Battery

Ver. : 1.00 Date : 2017/12/18

## Step :

- 1.Disconnect battery cable(Fig.1).
- 2.Loosen Battery screw\*4(T8)(Fig.2).
- ❖ Torsion :  $2.0 \pm 0.2 \text{ kgf} \cdot \text{cm}$
- 3.Remove battery(Fig.3).



Fig.1



Fig.2



Fig.3

Notes : If finding anything uncommon, notice foreman or assistant at once.

Holding fixture list (holding fixture standard)	Qty	Holding fixture list (holding fixture standard)	Qty
Electric cross screwdriver(T8)	1		

Tabulator : Vick Weng

Auditor : C.S. Lee

Issue department : NPSU-PPE



# Standard Operation Procedure

Document No. : Computron Trypticon 15" DIS ASS'Y SOP

Station : 4(1/1)

Name : Disassemble DDR/NFC

Ver. : 1.00 Date : 2017/12/18

## Step :

1. Disassemble DDR(Fig.1).
2. Disassemble NFC FFC, NFC module, NFC antenna(Fig.2).

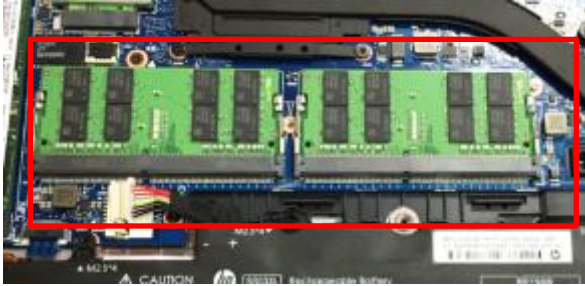


Fig.1

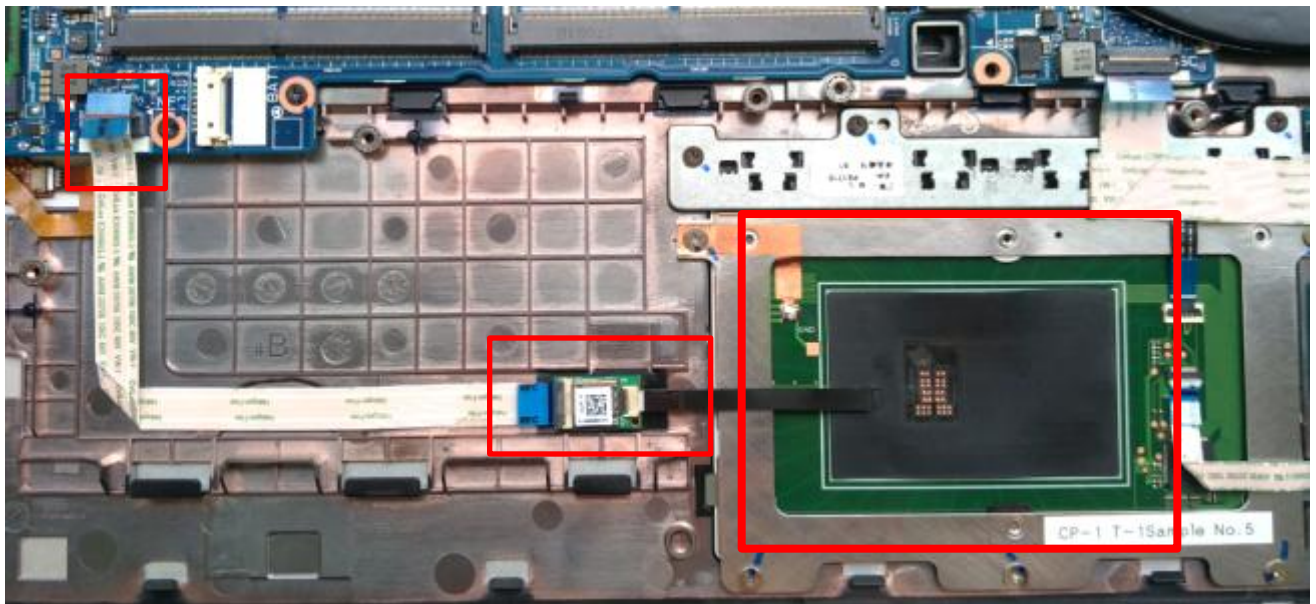


Fig.2

Notes : If finding anything uncommon, notice foreman or assistant at once.

Holding fixture list (holding fixture standard)	Qty	Holding fixture list (holding fixture standard)	Qty

Tabulator : Vick Weng

Auditor : C.S. Lee

Issue department : NPSU-PPE



# Standard Operation Procedure

Document No. : Computron Trypticon 15" DIS ASS'Y SOP

Station : 5(1/1)

Name : Disassemble WLAN/WWAN/SSD

Ver. : 1.00

Date : 2017/12/18

## Step :

1. Disassemble WLAN/WWAN cable from module & hook(Fig.1).
2. Loosen WLAN/WWAN/SSD screw, then remove WLAN/WWAN/SSD module from M/B(Fig.2).

❖ Torsion :  $1.5 \pm 0.2 \text{ kgf} \cdot \text{cm}$

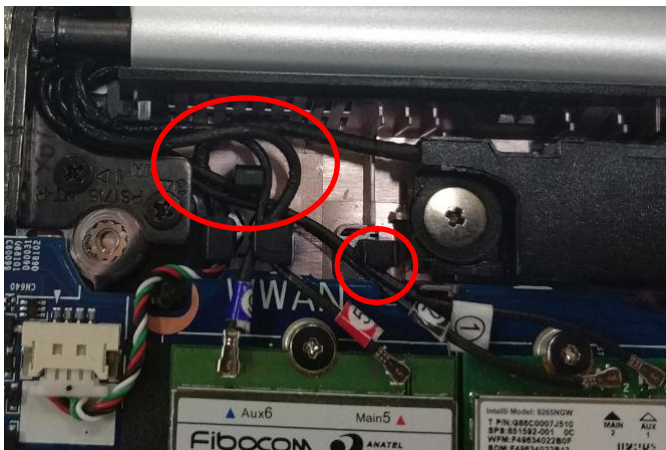


Fig.1

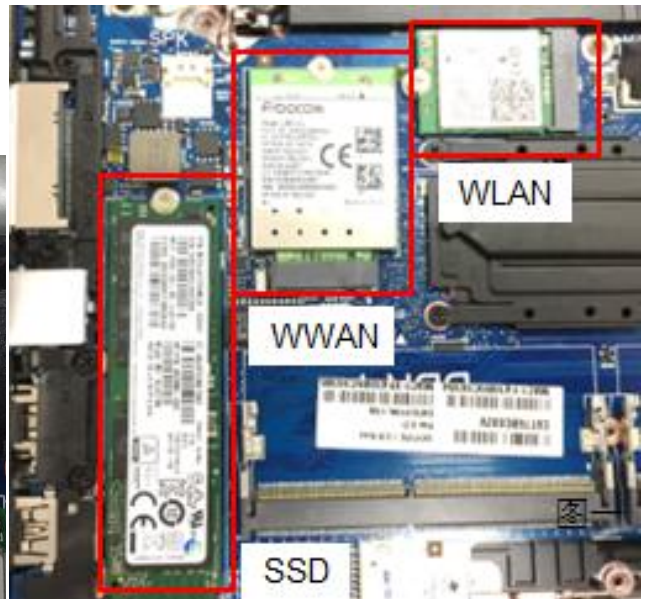


Fig.2

Notes : If finding anything uncommon, notice foreman or assistant at once.

Holding fixture list (holding fixture standard)	Qty	Holding fixture list (holding fixture standard)	Qty
Electric cross screwdriver	1		

Tabulator : Vick Weng

Auditor : C.S. Lee

Issue department : NPSU-PPE





# Standard Operation Procedure

Document No. : Computron Trypticon 15" DIS ASS'Y SOP

Station : 6(1/1)

Name : Disassemble Power FFC, FAN/LVDS/CCD Cable

Ver. : 1.00

Date : 2017/12/18

## Step :

- 1.Disassemble Power FFC/FAN cable(Fig.1/Fig.2).
- 2.Disassemble LVDS Cable, CCD Cable(Fig.3/Fig.4).



Fig.1

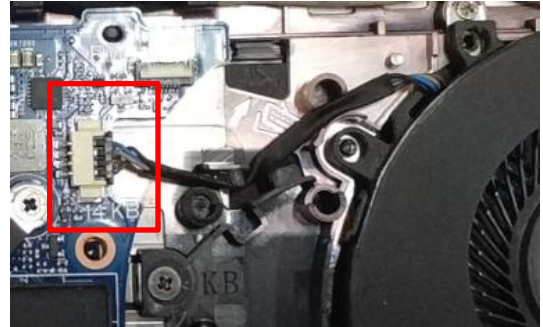


Fig.2

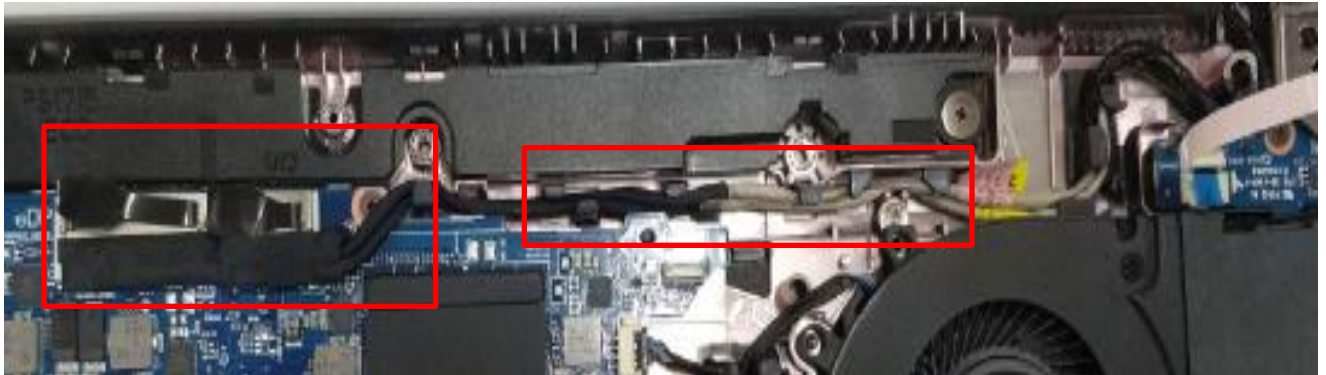


Fig.3

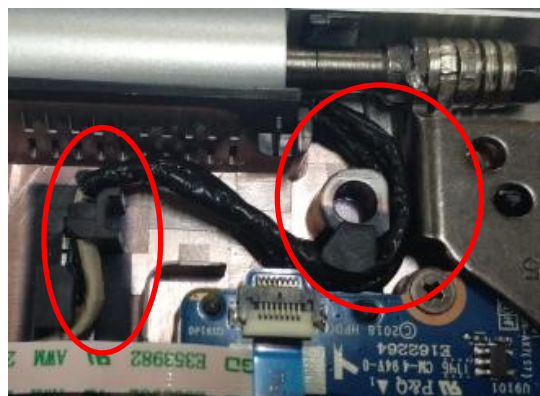


Fig.4

Notes : If finding anything uncommon, notice foreman or assistant at once.

Holding fixture list (holding fixture standard)	Qty	Holding fixture list (holding fixture standard)	Qty

Tabulator : Vick Weng

Auditor : C.S. Lee

Issue department : NPSU-PPE



# Standard Operation Procedure

Document No. : Computron Trypticon 15" DIS ASS'Y SOP

Station : 7(1/1)

Name : Separate Panel & Base Unit

Ver. : 1.00 Date : 2017/12/18

## Step :

1. Open base unit to 90 degree(Fig.1).
2. Loosen Hinge screw\*5(M2.5\*5.0)(Fig.2/Fig.3).
- ❖ Torsion :  $3.0 \pm 0.2 \text{ kgf} \cdot \text{cm}$
3. Separate panel set & base unit.

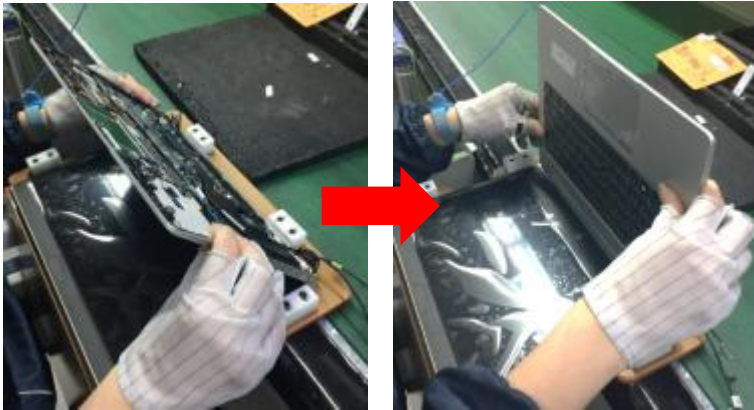


Fig.1

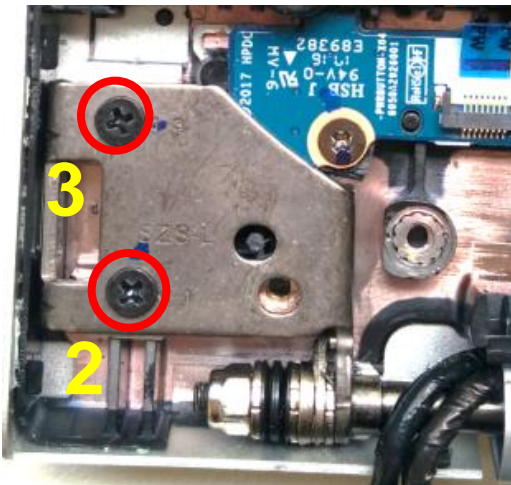


Fig.2

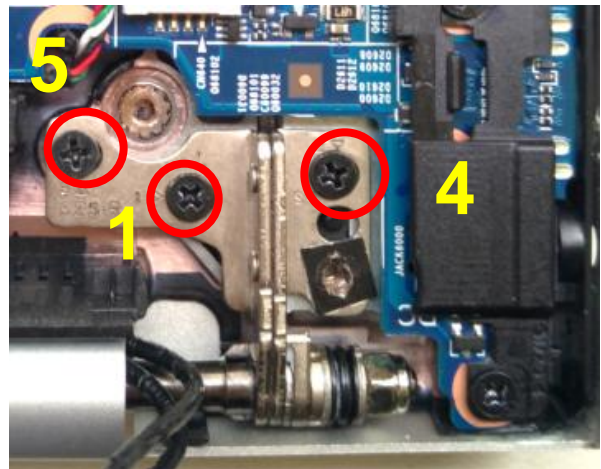


Fig.3

Notes : If finding anything uncommon, notice foreman or assistant at once.

Holding fixture list (holding fixture standard)	Qty	Holding fixture list (holding fixture standard)	Qty
Electric cross screwdriver	1		

Tabulator : Vick Weng

Auditor : C.S. Lee

Issue department : NPSU-PPE



# Standard Operation Procedure

Document No. : Computron Trypticon 15" DIS ASS'Y SOP

Station : 8(1/1)

Name : Loosen K/B & FAN screw

Ver. : 1.00 Date : 2017/12/18

## Step :

1. Loosen K/B screw\*3(M2.0\*3.0)(Fig.1).
  2. Loosen FAN screw\*1(M2.0\*3.0)(Fig.2).
- ❖ Torsion :  $1.5 \pm 0.2 \text{ kgf} \cdot \text{cm}$



Fig.1

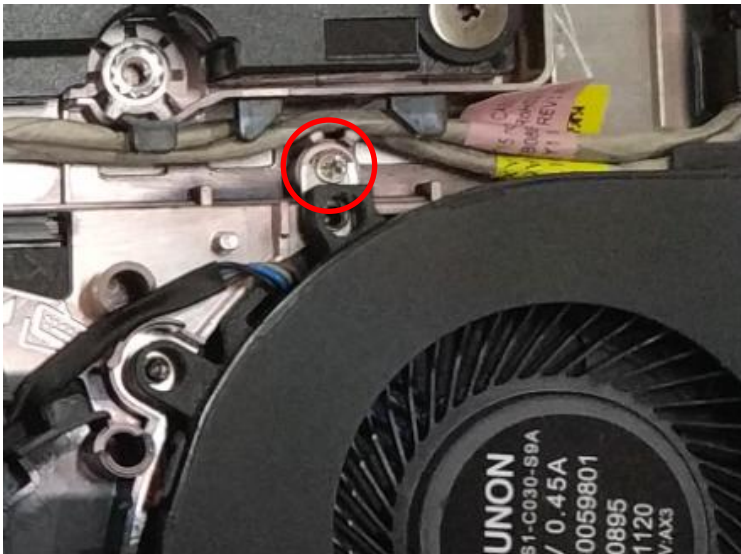


Fig.2

Notes : If finding anything uncommon, notice foreman or assistant at once.

Holding fixture list (holding fixture standard)	Qty	Holding fixture list (holding fixture standard)	Qty
Electric cross screwdriver	1		

Tabulator : Vick Weng

Auditor : C.S. Lee

Issue department : NPSU-PPE



# Standard Operation Procedure

Document No. : Computron Trypticon 15" DIS ASS'Y SOP

Station : 9(1/1)

Name : Disassemble K/B

Ver. : 1.00 Date : 2017/12/18

### Step :

1. Use plastic stick to push the K/B (Fig.1).
2. Turn the computer over, then disassemble K/B (Fig.2).
3. Disassemble K/B FFC, backlight FPC, PS FFC, then remove K/B (Fig.3~5).

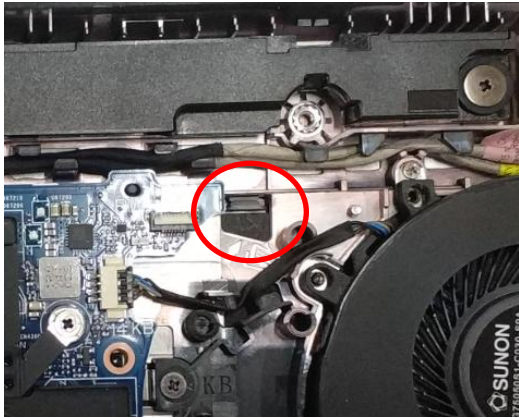


Fig.1



Fig.2

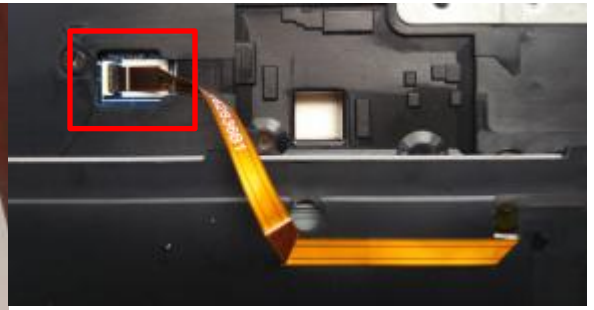


Fig.3

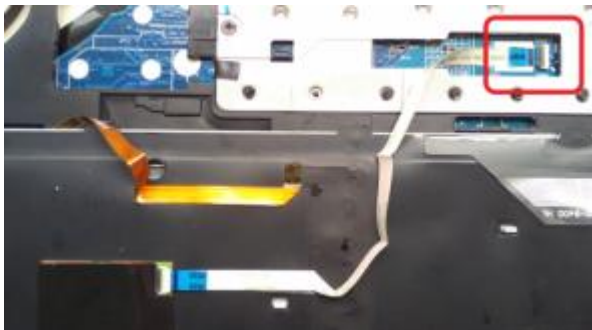


Fig.4



Fig.5

Notes : If finding anything uncommon, notice foreman or assistant at once.

Holding fixture list (holding fixture standard)	Qty	Holding fixture list (holding fixture standard)	Qty
Plastic stick	1		

Tabulator : Vick Weng

Auditor : C.S. Lee

Issue department : NPSU-PPE



# Standard Operation Procedure

Document No. : Computron Trypticon 15" DIS ASS'Y SOP

Station : 10(1/1)

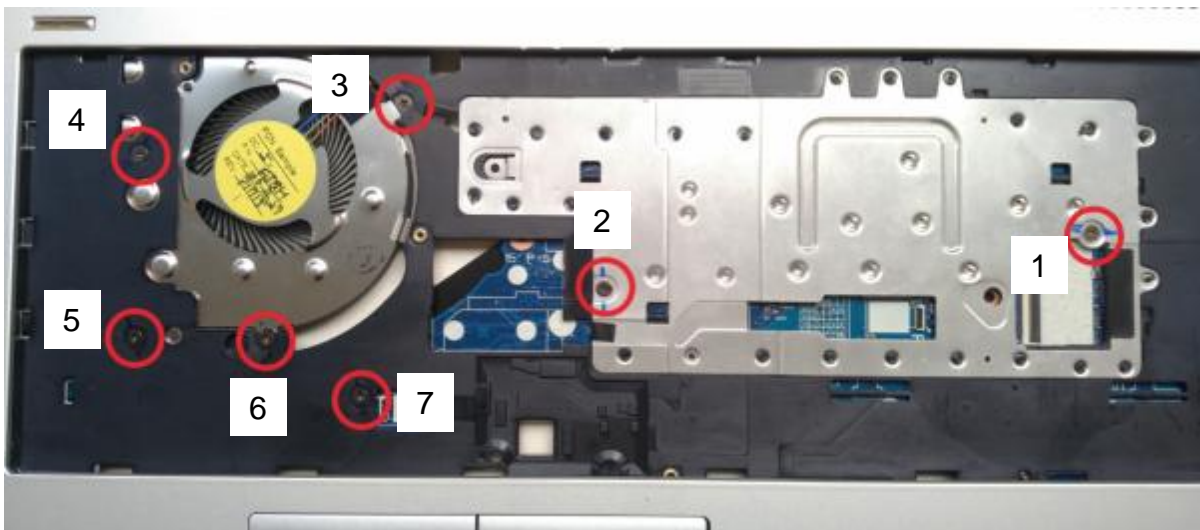
Name : Loosen screw

Ver. : 1.00 Date : 2017/12/18

## Step :

1.Loosen screw\*7(M2.0\*3.0).

❖ Torsion :  $1.5 \pm 0.2 \text{ kgf} \cdot \text{cm}$



Notes : If finding anything uncommon, notice foreman or assistant at once.

Holding fixture list (holding fixture standard)	Qty	Holding fixture list (holding fixture standard)	Qty
Electric cross screwdriver	1		

Tabulator : Vick Weng

Auditor : C.S. Lee

Issue department : NPSU-PPE



# Standard Operation Procedure

Document No. : Computron Trypticon 15" DIS ASS'Y SOP

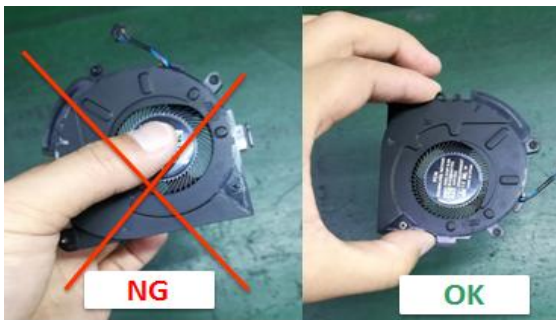
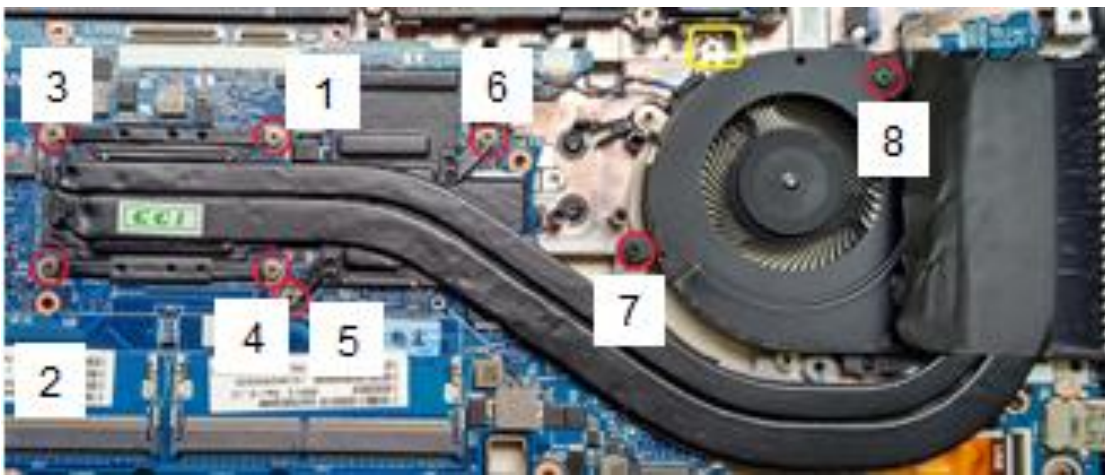
Station : 11(1/1)

Name : Disassemble Thermal & FAN

Ver. : 1.00 Date : 2017/12/18

## Step :

1. Turn the computer over.
2. Loosen thermal/FAN screw\*8.
- ❖ Torsion :  $1.5 \pm 0.2 \text{ kgf} \cdot \text{cm}$
3. Remove thermal & FAN module.



Notes : If finding anything uncommon, notice foreman or assistant at once.

Holding fixture list (holding fixture standard)	Qty	Holding fixture list (holding fixture standard)	Qty
Electric cross screwdriver	1		

Tabulator : Vick Weng

Auditor : C.S. Lee

Issue department : NPSU-PPE



# Standard Operation Procedure

Document No. : Computron Trypticon 15" DIS ASS'Y SOP

Station : 12(1/1)

Name : Disassemble I/O Frame

Ver. : 1.00 Date : 2017/12/18

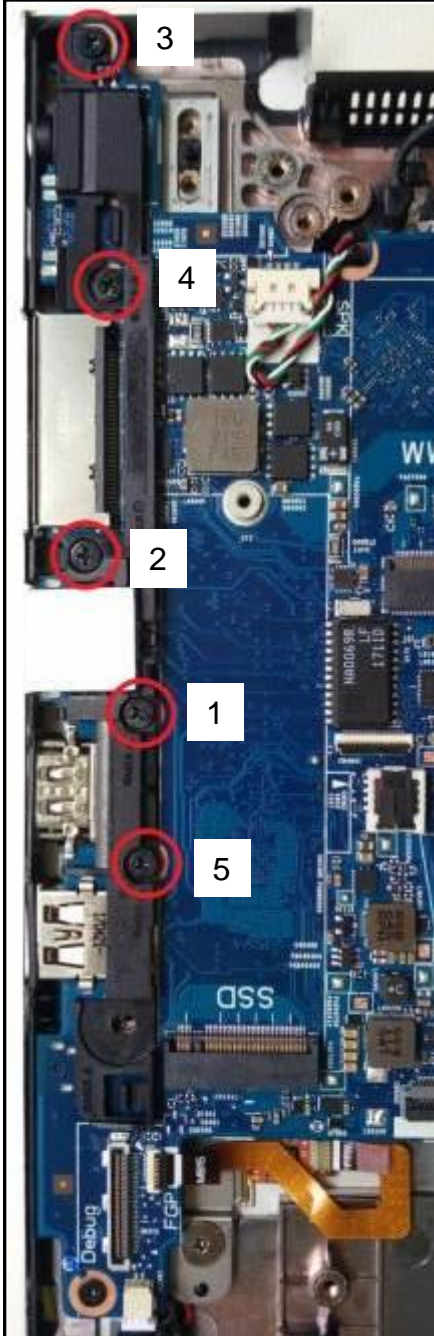


Fig.1

## Step :

1. Loosen RJ45 screw\*5(M2.0\*4.0)(Fig.1).  
❖ Torsion :  $1.5 \pm 0.2 \text{ kgf} \cdot \text{cm}$
2. Disassemble I/O Frame(Fig.2).



Fig.2

Notes : If finding anything uncommon, notice foreman or assistant at once.

Holding fixture list (holding fixture standard)	Qty	Holding fixture list (holding fixture standard)	Qty
Electric cross screwdriver	1		

Tabulator : Vick Weng

Auditor : C.S. Lee

Issue department : NPSU-PPE



# Standard Operation Procedure

Document No. : Computron Trypticon 15" DIS ASS'Y SOP

Station : 13(1/1)

Name : Disassemble Cable/FFC

Ver. : 1.00 Date : 2017/12/18

## Step :

1. Disassemble speaker cable, then remove cable from hook(Fig.1).
2. Disassemble sub-battery(Fig.2).
3. Disassemble USB FFC(Fig.3).
4. Disassemble SMC FFC(Fig.3).
5. Disassemble FPR FFC(Fig.4).

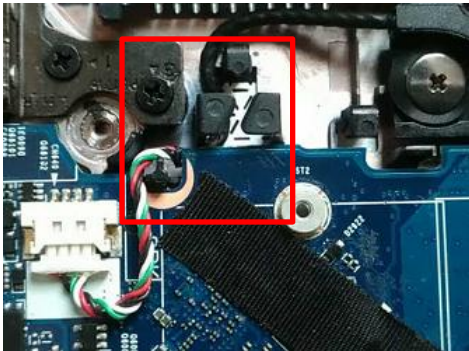


Fig.1

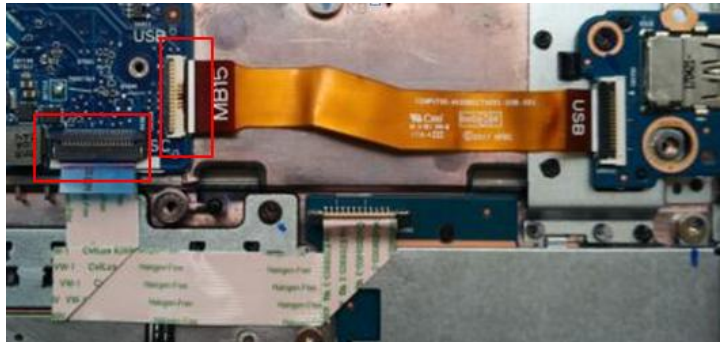


Fig.3

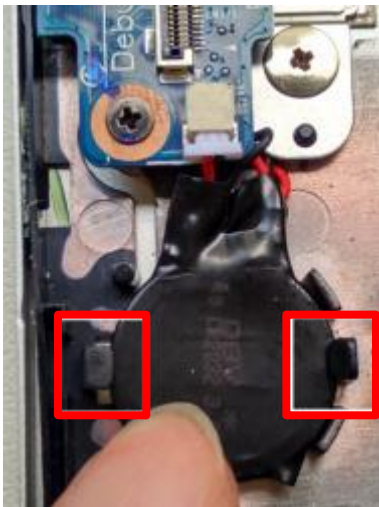


Fig.2

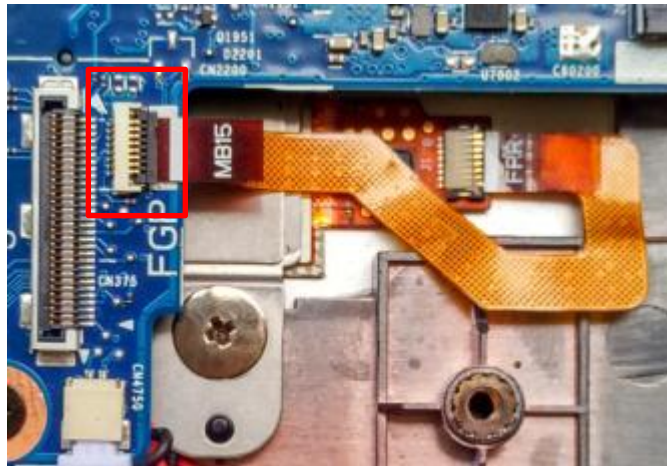


Fig.4

Notes : If finding anything uncommon, notice foreman or assistant at once.

Holding fixture list (holding fixture standard)	Qty	Holding fixture list (holding fixture standard)	Qty

Tabulator : Vick Weng

Auditor : C.S. Lee

Issue department : NPSU-PPE





# Standard Operation Procedure

Document No. : Computron Trypticon 15" DIS ASS'Y SOP

Station : 14(1/1)

Name : Disassemble M/B

Ver. : 1.00 Date : 2017/12/18

## Step :

1. Loosen M/B screw\*7(M2.0\*3.0)(Fig.1).

❖ Torsion :  $1.5 \pm 0.2 \text{ kgf} \cdot \text{cm}$

2. Disassemble M/B from top case(Fig.2).

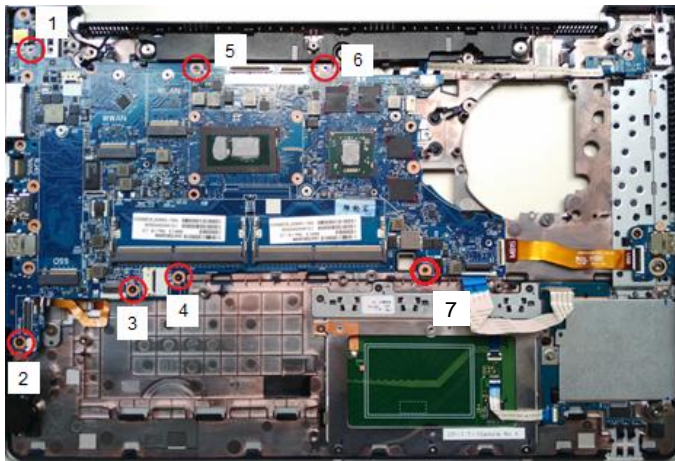


Fig.1

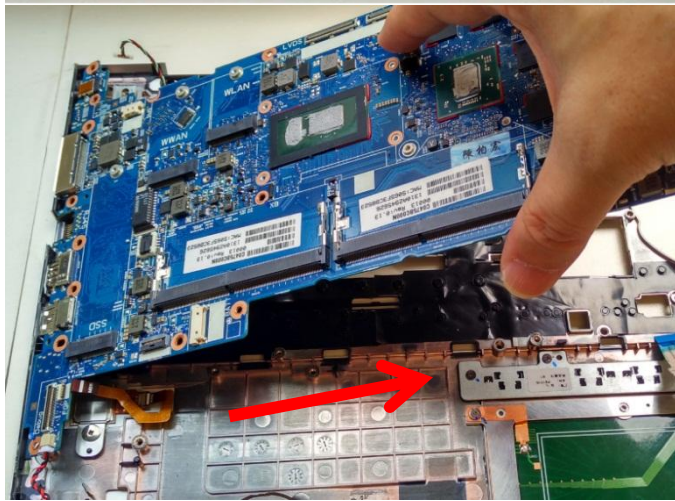


Fig.2

Notes : If finding anything uncommon, notice foreman or assistant at once.

Holding fixture list (holding fixture standard)	Qty	Holding fixture list (holding fixture standard)	Qty
Electric cross screwdriver	1		



# Standard Operation Procedure

Document No. : Computron Trypticon 15" DIS ASS'Y SOP

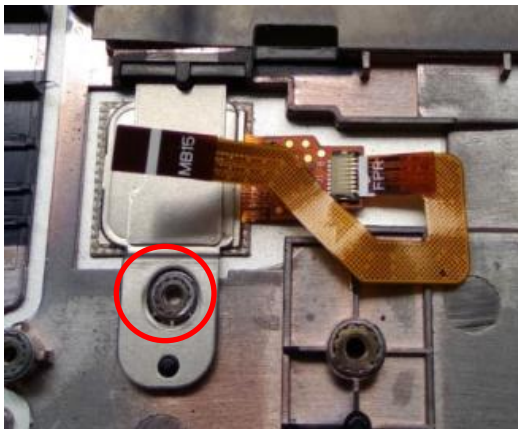
Station : 15(1/1)

Name : Disassemble Finger Printer or DummyVer. : 1.00

Date : 2017/12/18

## Step :

1. Loosen finger printer screw\*1(M2.0\*2.0).  
❖ Torsion :  $1.5 \pm 0.2 \text{ kgf} \cdot \text{cm}$
2. Disassemble dummy finger/finger printer from top case.



Notes : If finding anything uncommon, notice foreman or assistant at once.

Holding fixture list (holding fixture standard)	Qty	Holding fixture list (holding fixture standard)	Qty
Electric cross screwdriver	1		

Tabulator : Vick Weng

Auditor : C.S. Lee

Issue department : NPSU-PPE



# Standard Operation Procedure

Document No. : Computron Trypticon 15" DIS ASS'Y SOP

Station : 16(1/1)

Name : Disassemble Smart card

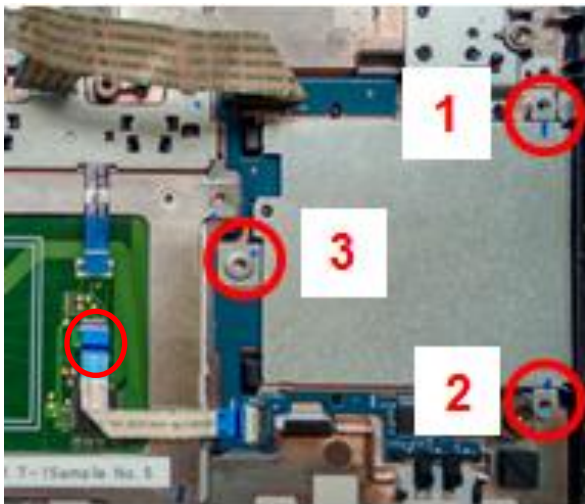
Ver. : 1.00 Date : 2017/12/18

## Step :

1. Disassemble smartcard FFC(Fig.1)
2. Loosen SMC screw\*3(M2.0\*2.0), then disassemble SMC/B(Fig.1)

❖ Torsion :  $1.5 \pm 0.2$  kgf · cm

❖ Dummy Smartcard loosen screw\*1(Fig.2)



Smartcard

Fig.1



dummy Smartcard Fig.2

Notes : If finding anything uncommon, notice foreman or assistant at once.

Holding fixture list (holding fixture standard)	Qty	Holding fixture list (holding fixture standard)	Qty
Electric cross screwdriver	1		

Tabulator : Vick Weng

Auditor : C.S. Lee

Issue department : NPSU-PPE



# Standard Operation Procedure

Document No. : Computron Trypticon 15" DIS ASS'Y SOP

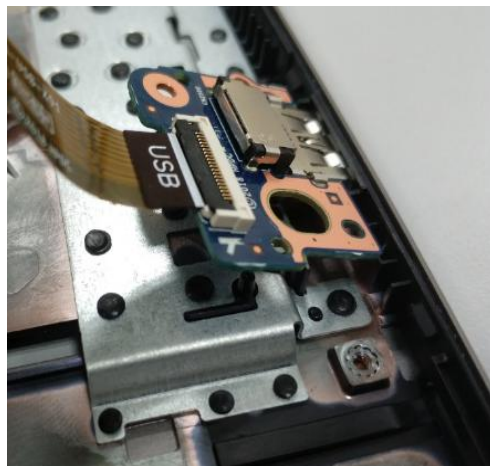
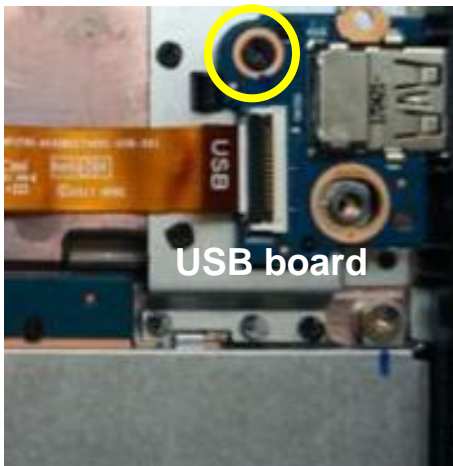
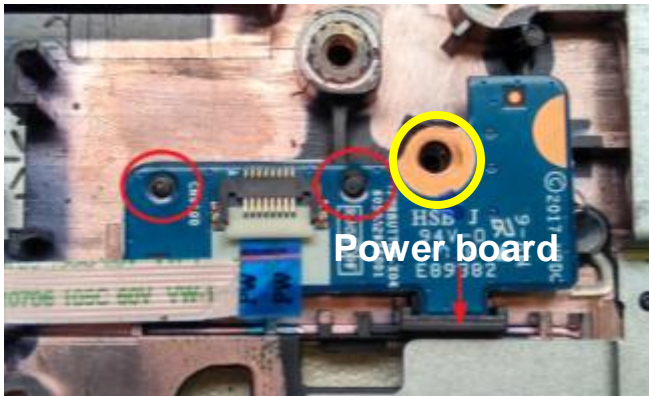
Station : 17(1/1)

Name : Disassemble USB/B & Power/B

Ver. : 1.00 Date : 2017/12/18

## Step :

1. Loosen Power/B , USB/B screw\*2(M2x3L).
2. Disassemble Power/B & USB/B.



Notes : If finding anything uncommon, notice foreman or assistant at once.

Holding fixture list (holding fixture standard)	Qty	Holding fixture list (holding fixture standard)	Qty
Electric cross screwdriver	1		

Tabulator : Vick Weng

Auditor : C.S. Lee

Issue department : NPSU-PPE



# Standard Operation Procedure

Document No. : Computron Trypticon 15" DIS ASS'Y SOP

Station : 18(1/1)

Name : Disassemble Speaker

Ver. : 1.00 Date : 2017/12/18

## Step :

1. Loosen screw\*2(M2.0\*2.0).  
❖ Torsion :  $1.5 \pm 0.2 \text{ kgf} \cdot \text{cm}$
2. Disassemble speaker.



Notes : If finding anything uncommon, notice foreman or assistant at once.

Holding fixture list (holding fixture standard)	Qty	Holding fixture list (holding fixture standard)	Qty
Electric cross screwdriver	1		

Tabulator : Vick Weng

Auditor : C.S. Lee

Issue department : NPSU-PPE



# Standard Operation Procedure

Document No. : Computron Trypticon 15" DIS ASS'Y SOP

Station : 19(1/1)

Name : Disassemble Pick Button

Ver. : 1.00 Date : 2017/12/18

## Step :

1. Disassemble pick button FPC(Fig.1).
2. Loosen pick button screw\*4(M2.0\*3.0) , then disassemble pick button.

❖ Torsion :  $1.5 \pm 0.2 \text{ kgf} \cdot \text{cm}$

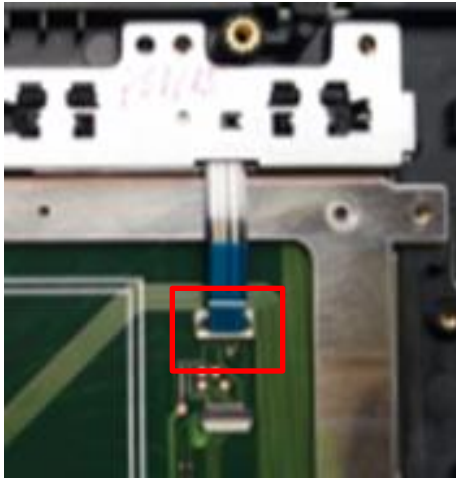


Fig.1

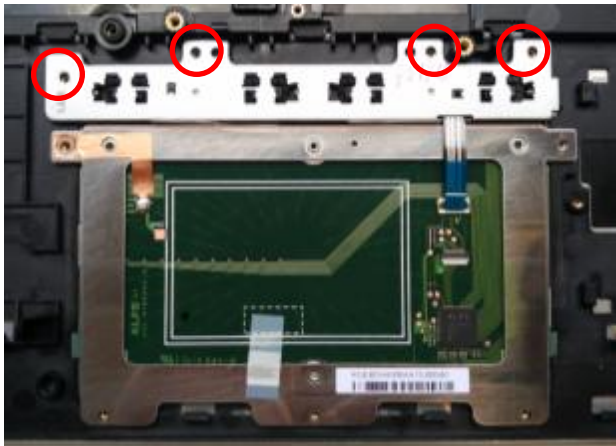


Fig.2

Notes : If finding anything uncommon, notice foreman or assistant at once.

Holding fixture list (holding fixture standard)	Qty	Holding fixture list (holding fixture standard)	Qty
Electric cross screwdriver	1		

Tabulator : Vick Weng

Auditor : C.S. Lee

Issue department : NPSU-PPE



# Standard Operation Procedure

Document No. : Computron Trypticon 15" DIS ASS'Y SOP

Station : 20(1/1)

Name : Disassemble Click pad

Ver. : 1.00 Date : 2017/12/18

### Step :

1. Loosen screw\*5(M2.0\*2.0), then disassemble click pad.

❖ Torsion :  $1.5 \pm 0.2 \text{ kgf} \cdot \text{cm}$



Notes : If finding anything uncommon, notice foreman or assistant at once.

Holding fixture list (holding fixture standard)	Qty	Holding fixture list (holding fixture standard)	Qty
Electric cross screwdriver	1		

Tabulator : Vick Weng

Auditor : C.S. Lee

Issue department : NPSU-PPE



# Standard Operation Procedure

Document No. : Computron Trypticon 15" DIS ASS'Y SOP

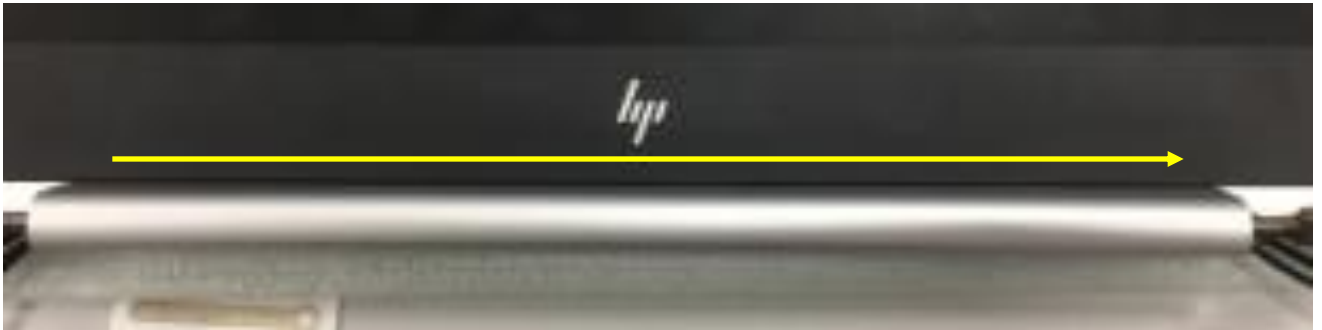
Station : 21(1/1)

Name : Disassemble Hinge cap

Ver. : 1.00 Date : 2017/12/18

## Step :

1. Disassemble hinge cap in order.



Notes : If finding anything uncommon, notice foreman or assistant at once.

Holding fixture list (holding fixture standard)	Qty	Holding fixture list (holding fixture standard)	Qty

Tabulator : Vick Weng

Auditor : C.S. Lee

Issue department : NPSU-PPE





# Standard Operation Procedure

Document No. : Computron Trypticon 15" DIS ASS'Y SOP

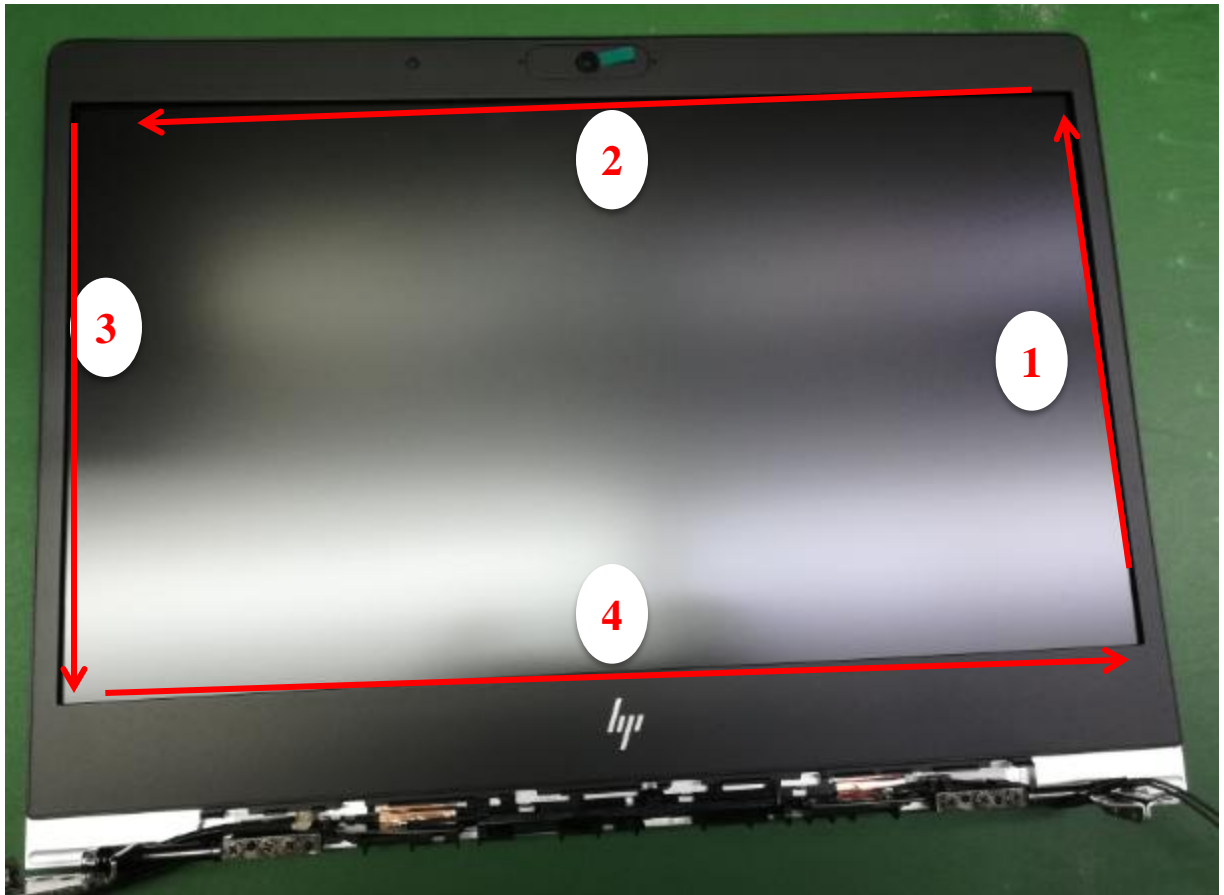
Station : 22(1/1)

Name : Disassemble Bezel

Ver. : 1.00 Date : 2017/12/18

## Step :

1. Disassemble bezel in order.



Notes : If finding anything uncommon, notice foreman or assistant at once.

Holding fixture list (holding fixture standard)	Qty	Holding fixture list (holding fixture standard)	Qty

Tabulator : Vick Weng

Auditor : C.S. Lee

Issue department : NPSU-PPE



# Standard Operation Procedure

Document No. : Computron Trypticon 15" DIS ASS'Y SOP

Station : 23(1/1)

Name : Disassemble Panel

Ver. : 1.00 Date : 2017/12/18

## Step :

1. Loosen panel screw\*4(M2.0\*2.0), then remove panel from rear case.

❖ Torsion :  $2.0 \pm 0.2 \text{ kgf} \cdot \text{cm}$



Notes : If finding anything uncommon, notice foreman or assistant at once.

Holding fixture list (holding fixture standard)	Qty	Holding fixture list (holding fixture standard)	Qty
Electric cross screwdriver	1		

Tabulator : Vick Weng

Auditor : C.S. Lee

Issue department : NPSU-PPE



# Standard Operation Procedure

Document No. : Computron Trypticon 15" DIS ASS'Y SOP

Station : 24(1/1)

Name : Disassemble LCM Cable

Ver. : 1.00 Date : 2017/12/18

## Step :

1. Disassemble LCM cable (Fig.1).
2. Disassemble camera cable from hook (Fig.2).

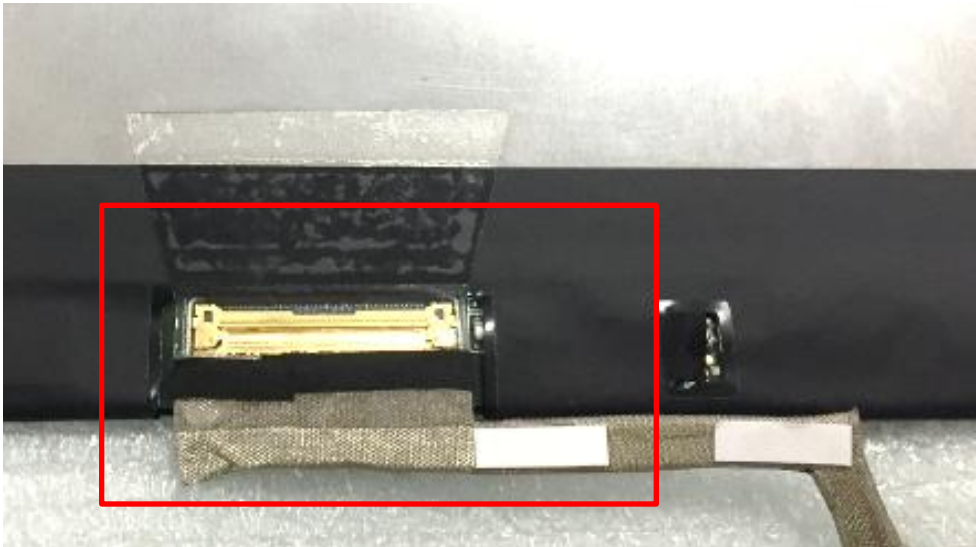


Fig.1



Fig.2

Notes : If finding anything uncommon, notice foreman or assistant at once.

Holding fixture list (holding fixture standard)	Qty	Holding fixture list (holding fixture standard)	Qty

Tabulator : Vick Weng

Auditor : C.S. Lee

Issue department : NPSU-PPE



# Standard Operation Procedure

Document No. : Computron Trypticon 15" DIS ASS'Y SOP

Station : 25(1/1)

Name : Disassemble Camera, ALS/B, MIC/B

Ver. : 1.00

Date : 2017/12/18

## Step :

1. Disassemble camera cable.
2. Disassemble camera, ALS/B, MIC/B from rear case.



Notes : If finding anything uncommon, notice foreman or assistant at once.

Holding fixture list (holding fixture standard)	Qty	Holding fixture list (holding fixture standard)	Qty

Tabulator : Vick Weng

Auditor : C.S. Lee

Issue department : NPSU-PPE



# Standard Operation Procedure

Document No. : Computron Trypticon 15" DIS ASS'Y SOP

Station : 26(1/1)

Name : Disassemble WLAN/WWAN cable

Ver. : 1.00

Date : 2017/12/18

## Step :

1. Disassemble WLAN cable from hook, then remove antenna from rear case(Fig.1/Fig.2).
2. Disassemble WWAN cable from hook, then remove antenna from rear case(Fig.3/Fig.4).



Fig.1



Fig.2



Fig.3



Fig.4

Notes : If finding anything uncommon, notice foreman or assistant at once.

Holding fixture list (holding fixture standard)	Qty	Holding fixture list (holding fixture standard)	Qty

Tabulator : Vick Weng

Auditor : C.S. Lee

Issue department : NPSU-PPE



# Standard Operation Procedure

Document No. : Computron Trypticon 15" DIS ASS'Y SOP

Station : 27(1/1)

Name : Disassemble Hinge

Ver. : 1.00 Date : 2017/12/18

## Step :

1. Loosen hinge screw\*6(M2.5\*10), then disassemble hinge from rear case(Fig.1/Fig.2).

❖ Torsion :  $3.0 \pm 0.2 \text{ kgf} \cdot \text{cm}$



Fig.1

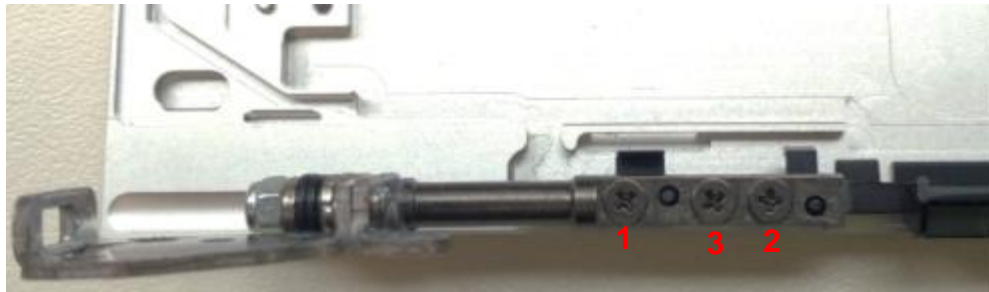


Fig.2

Notes : If finding anything uncommon, notice foreman or assistant at once.

Holding fixture list (holding fixture standard)	Qty	Holding fixture list (holding fixture standard)	Qty
Electric cross screwdriver	1		

Tabulator : Vick Weng

Auditor : C.S. Lee

Issue department : NPSU-PPE