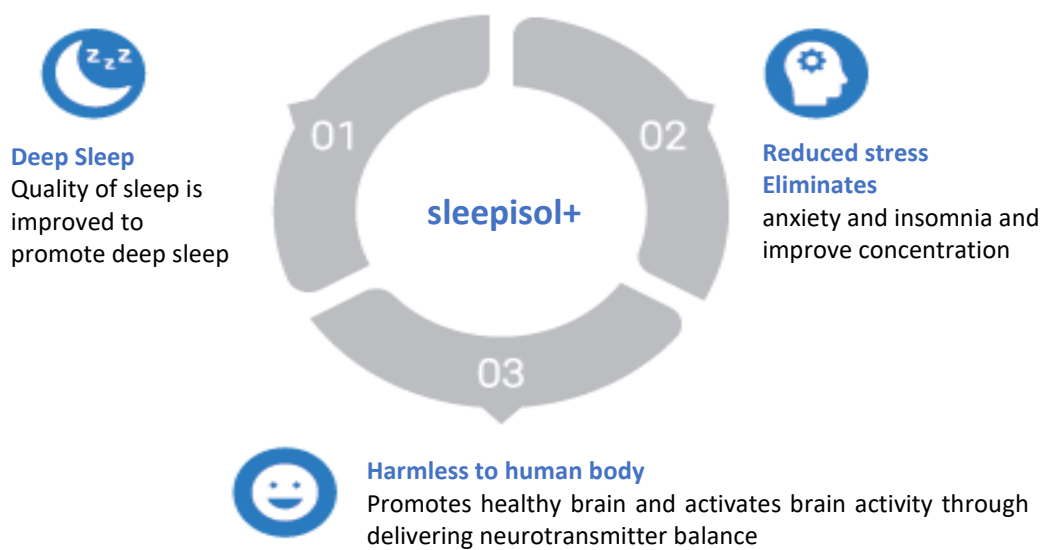


sleepisol+ User Manual

Product description and efficacy

sleepisol+ is a smart wearable product utilizing CES (Cranial Electrotherapy Stimulation) technology that ensures the quality of life by promoting high quality sleep. (Non-medical device)
User friendly app provides convenient use.



Deep Sleep

Quality of sleep is improved to promote deep sleep

Promotes strong concentration

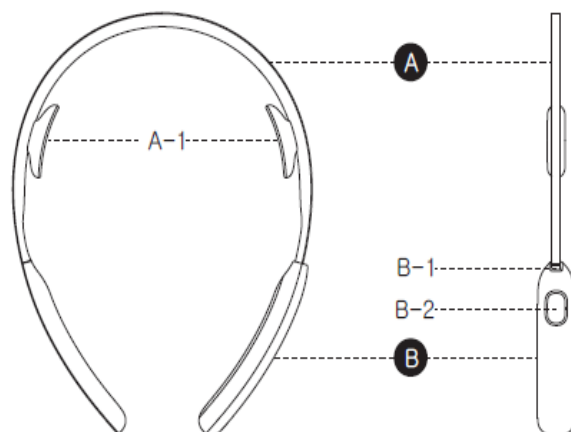
Reduced stress
Eliminates anxiety and insomnia and improves concentration

Exercise for Brain

Promotes healthy brain and activates brain activity through delivering neurotransmitter balance

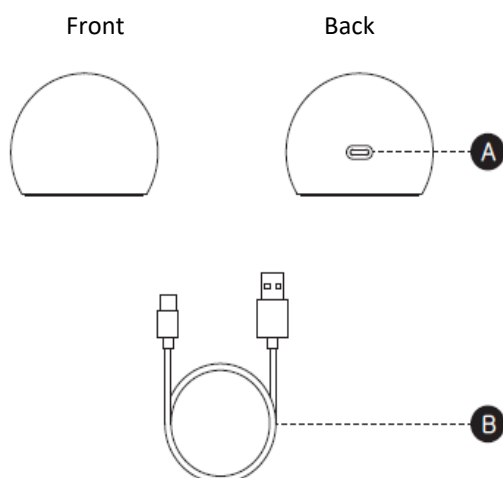
Product content

Sleepisol⁺



- A** sleepisol+ band | A-1. CES Sensor
- B** Main module | B-1. Operation LED
B-2. Power Button

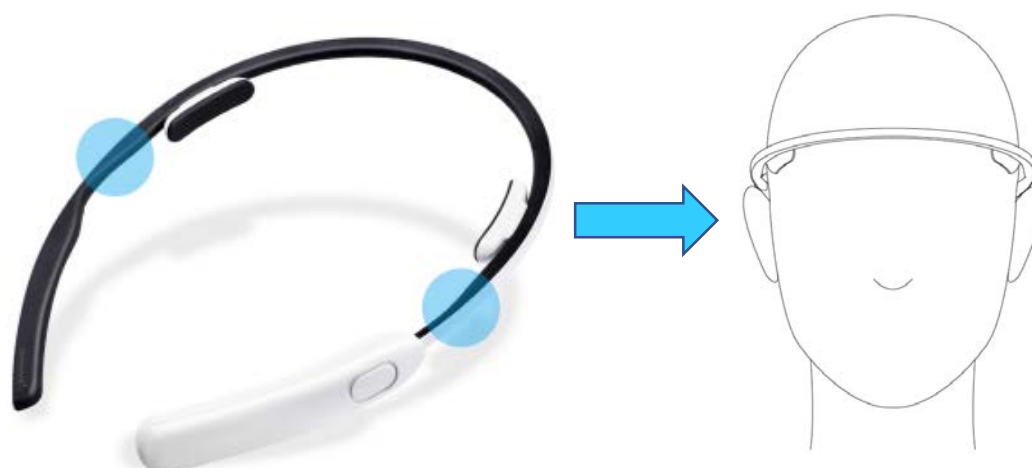
Charger



- A** Charging connector

- B** USB-C cable

How to use



- Hold the product at the position shown in the image.
- Put on the product onto the head, positioning the CES sensors at temple
- The product is bidirectional. Position the product at the most comfortable way.
- Wash face before use. The Product can be used on make-up base
- Heavy make-up, hair, and other objects at the CES sensor area can cause malfunction or reduced performance.

ON/OFF / In operation / Continued use / Bluetooth connection

ON :

Touch the power button for more than 1 second to power on the product. LED should blink twice, and an audible indication will be generated. The product is now in operation.

OFF :

Touch the power button for more than 3 seconds to stop the operation and to power off the product. Orange LED blinks twice and an audible indication is generated. The product is now powered off.

In operation :



Blue LED pulsates over 10 second interval while in operation.

The product powers off automatically in 30 minutes after powering on.

Continued use :

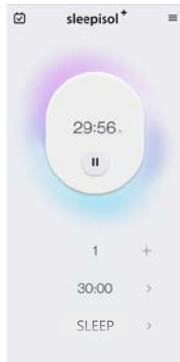
If a continued use is desired, it is required to power on the product again after 30 minutes. Mobile app can be used to set operation time up to 60 minutes.

Bluetooth connection :

1. Turn on Bluetooth function on the mobile device.
2. Power on the product.
3. Start the app and press  button, and find sleepisol+ on the list. Select the sleepisol+ device to connect to the product.
4. Blue LED will stay lit for 3 seconds and go off when the connection is achieved
5. After the initial connection, power on the product and press  button on the app to connect.

- * It is highly recommended to use the app to receive accurate data.
- * Total use time is the only data provided if app is not used.
- * The product will stop operation automatically after 30 minutes if it is not used along with the app.

Changing the operation mode (4 operation modes)



sleepisol+ provides sleep/stress/calming/concentration modes

Mode can be changed on the app after the product is connected to the app.

* Last activated mode will be used when the product is not used with the app.

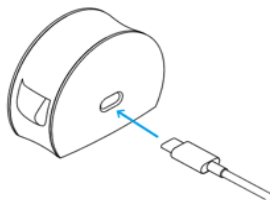
(Sleep mode is factory set)

Battery alert

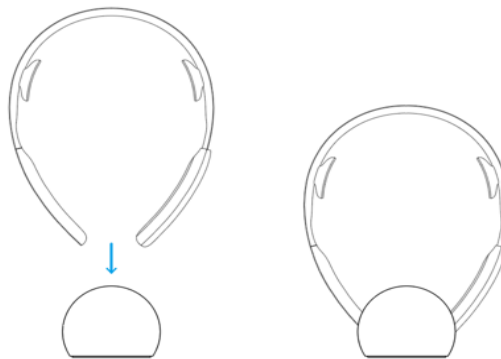
If the battery charge level drops below certain level, orange LED will blink 5 times and the product will not power on. Charge the product as follows.

Charging the product

A



B



1. Plug in the cable as shown in above image A
2. Slide in the product as shown in image B
3. Orange LED will light up during charge.
4. Green LED will light up when charging is completed.

* Battery is a consumable, and the battery life will be reduced over the lifespan of the product.

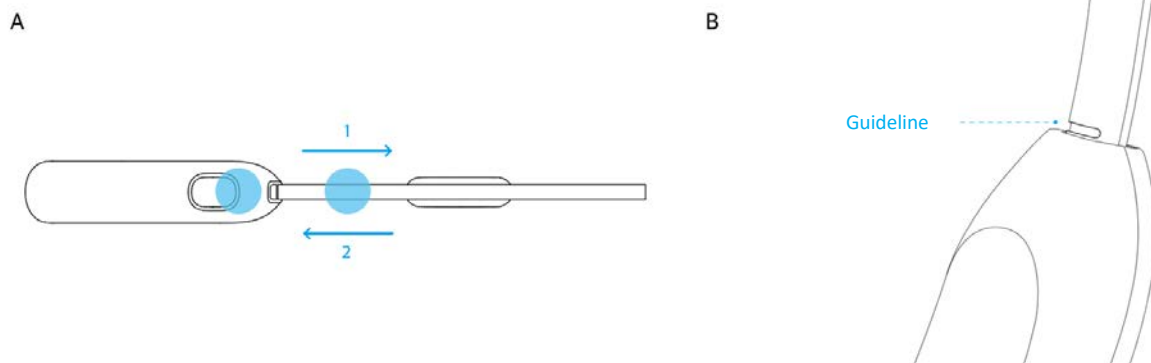
Recommended lifespan of sleepisol+ band and how to replace the band

Lifespan of the band

sleepisol+ band is a consumable part. Recommended use time for the band is 1,000 hours. Using more than the expected lifespan will cause reduced performance of the product. Follow below instruction to replace the band

sleepisol+ band can be purchased at Leesol website. <http://leesolbrain.com>

How to replace the band



1. Hold the product by the position shown in the image A, and pull apart to remove the band.
2. Press in the new sleepisol+ band until it clicks. Make sure the insert guideline is at the position as shown in the image B.
3. The product will not function properly if the band is not inserted correctly.
4. Do not press in too hard as it can damage the product.

Precautions for use

For safe use of microcurrent devices, please pay attention to the following points when using them.

- Users may experience minor flashing. Do not be alarmed as it is a normal effect of the product.
- Consult with a physician if the contact area causes skin irritation.
- This product is a sensitive device that generates the same microcurrent as the current that naturally flows in the human body. Always use the provided charging cable and a certified power adaptor to insure proper performance.
- This product is not water resistant. Keep away from moisture.
- Keep the product away from children.
- Do not drop or apply extreme shock to the product.
- Disassembling, unauthorized repair or modification void all warranty and the manufacturer or the seller will not be responsible for any malfunctions or damages.
- Stop the usage if you experience headache or dizziness. Consult with a physician before resuming the use.

[Caution] *Risk of fire or explosion if the battery is disposal into fire or hot oven, mechanically crushing or cutting*

[Caution] *Risk of explosion or the leakage of flammable liquid or gas if the battery is leaving in an extremely high temperature surrounding environment.*

[Caution] *Risk of explosion or the leakage of flammable liquid or gas if the battery is subjected to extremely low air pressure.*

Specifications

| | |
|---------------------------------------|---|
| Product Name | sleepisol+ |
| Model Name | HB-2 |
| Description | A healthcare device that helps brain health by transmitting microcurrents to the brain. |
| Intended Use | Wellness or healthcare device (non-medical device) |
| Power | Power: 5.0Vdc, 70mA Battery: 3.7V, 110mAh, Li-Poly |
| RF Spec | Bluetooth LE 1M Max Power (E.I.R.P): Max 0.98 dBm (E.I.R.P) |
| Operation Conditions | Temperature: +5°C to +40°C Relative Humidity: 15% to 93% Atmospheric Pressure: 700~1060 hPa |
| Storage and transportation conditions | Temperature: -25°C to +70°C Relative Humidity: Less than 93% Atmospheric Pressure: 700~1060 hPa |
| Warranty period | 1 year |
| Customer service | Tel) +82-2-318-8890, Fax) +82-2-318-8842 E-mail) info@leesolbrain.com |

Requirements

CE

This device can be operated in at least one Member state without infringing applicable requirements on the use of radio spectrum.

FCC

This device complies with part 15 of the FCC Rules. Operation is subject to the following two conditions: (1) This device may not cause harmful interference, and (2) this device must accept any interference received, including interference that may cause undesired operation.

This equipment has been tested and found to comply with the limits for a Class B digital device, pursuant to part 15 of the FCC Rules. These limits are designed to provide reasonable protection against harmful interference in a residential installation. This equipment generates, uses and can radiate radio frequency energy and, if not installed and used in accordance with the instructions, may cause harmful interference to radio communications. However, there is no guarantee that interference will not occur in a particular installation. If this equipment does cause harmful interference to radio or television reception, which can be determined by turning the equipment off and on, the user is encouraged to try to correct the interference by one or more of the following measures:

Reorient or relocate the receiving antenna.

Increase the separation between the equipment and receiver.

Connect the equipment into an outlet on a circuit different from that to which the receiver is connected.

Consult the dealer or an experienced radio/TV technician for help.

Changes or modifications not expressly approved by the party responsible for compliance could void the user's authority to operate the equipment.

This device complies with RF exposure requirement.

IC

This device contains licence-exempt transmitter(s)/receiver(s) that comply with Innovation, Science and Economic Development Canada's licence-exempt RSS(s). Operation is subject to the following two conditions:

(1) This device may not cause interference.

(2) This device must accept any interference, including interference that may cause undesired operation of the device.

Cet appareil contient des émetteurs / récepteurs exempts de licence qui sont conformes aux RSS exempts de licence d'Innovation, Sciences et Développement économique Canada. Son fonctionnement est soumis aux deux conditions suivantes: (1) Cet appareil ne doit pas provoquer d'interférences. (2) Cet appareil doit accepter toute interférence, y compris les interférences qui peuvent provoquer un fonctionnement indésirable de l'appareil.

This device complies with RF exposure requirement.

Cet appareil est conforme à l'exigence d'exposition RF.

Limited Warranty

A product warranty is provided separately from the user manual.

When applying for product A/S, it is essential to check the warranty period of the product, so please fill in the relevant details so that it is not lost.

Limited Warranty

sleepisol+ is covered under a limited warranty policy and the manufacturer will stock spare parts for 2 years.

| | |
|--------------|------------------------|
| Product name | sleepisol ⁺ |
|--------------|------------------------|

| |
|---------------|
| Serial number |
|---------------|

| |
|---------------|
| Purchase date |
|---------------|

| |
|----------|
| Retailer |
|----------|

1) Limited warranty is provided for this product.
2) Returns are accepted within 14 days after the purchase. No returns are accepted in the event of change of mind, or if the product is damaged due to customer miss-use. 3) Do not lose the serial number as it will be used to identify the warranty period for any services. 4) Serial number can be found on the package. 5) Using any uncertified consumables/parts can cause malfunction/injury. Contact the seller for any consumables and parts.