

PHILIPS

sonicare

Standard sonic
toothbrush heads

W DiamondClean

4-pack

Standard size

Click-on

BrushSync mode pairing

HX6064/65



Up to 100% whiter teeth in just one week*

Advanced cleaning for stain removal & whiter teeth

The W DiamondClean brush head is perfect for those who want to go beyond deep cleaning to remove surface stains for a radiant, whiter smile. This brush head is also great for maintaining brightness between professional whitening treatments.

For exceptionally whiter teeth

- Whitens teeth in just one week
- Diamond-shaped bristles give you 100% whiter teeth in 1 week

For exceptional care of teeth and gums

- Up to 7x more plaque removal than a manual toothbrush

Innovative technology

- Automatically selects optimal mode for ultimate results**
- Philips Sonicare's advanced sonic technology

Designed to optimize performance

- Tested to meet your oral health needs
- Always know when to replace. Always get an effective clean.
- Click-on design for simple brush head placement

Highlights

Naturally whiter teeth



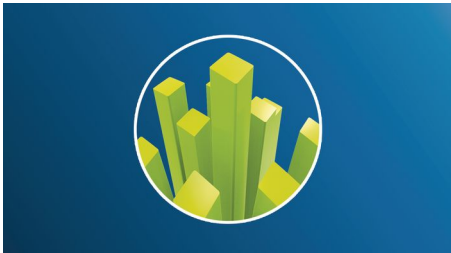
Click on the W DiamondClean brush head to remove surface stains and reveal a whiter smile. With its densely packed central stain-removal bristles, it's clinically proven to whiten teeth in just one week.

Say goodbye to plaque



Densely-packed, high-quality bristles remove up to 7x more plaque than a manual toothbrush.

Whiter teeth, fast



The DiamondClean's stain-removal pad, made from densely-packed diamond-shaped bristles, removes surface stains caused by food and drinks. You'll notice a whiter smile, up to 100%*, in just 7 days.

BrushSync™ mode-pairing



You'll always get the best possible clean with our BrushSync™ mode-pairing feature**. The W DiamondClean brush head syncs with your BrushSync™ enabled Philips Sonicare toothbrush handle**, selecting the optimal brushing mode and intensity level for exceptional whitening. All you need to do is start brushing.

Brushing with peace of mind



All Philips Sonicare brush heads are safe and gentle on teeth and gums. During tests, each brush head is put through its paces to ensure durability and an exceptional performance every time you brush.

Philips Sonicare technology



Philips Sonicare's advanced sonic technology pulses water between teeth, and its brush strokes break up plaque and sweep it away for an exceptional daily clean.

Brush head replacements



Brush heads become less effective after 3 months of use, but with BrushSync™ you'll be reminded before this happens. Your smart toothbrush will track how often and how hard you brush, and will notify you when it's time for a replacement. Don't have a smart Philips Sonicare toothbrush? Just monitor your blue replacement bristles, and when they turn white you'll know it's time for a fresh brush head.

Easy to click-on



Your W DiamondClean brush head fits perfectly with any Philips Sonicare toothbrush handle, except Philips One and Essence. Simply click on and off for easy replacement and cleaning.

Specifications

Items included

Brush heads: 4 W DiamondClean standard

Compatibility

Brush head system: Click-on

BrushSync mode-pairing

Suitable for these models: 2 Series plaque control, 2 Series plaque defense, 3 Series gum health, DiamondClean, DiamondClean Smart, EasyClean, Essence+, FlexCare, FlexCare

Platinum, FlexCare Platinum Connected, FlexCare+, for Kids, HealthyWhite, HealthyWhite+, PowerUp, ProtectiveClean

Design and finishing

Bristle stiffness feel: Medium

Color: White

Reminder bristles: Blue bristle color fade away

Size: Standard

Quality and performance

Replacement: Every 3 months

Tested: for optimal usage

Health benefits

Gum health: Helps improve gum health

Plaque removal: Removes up to 7x more plaque*

Whitening: Whiter teeth in just one week

