

## DC-GH5M2 Specifications

TYPE / IMAGE SENSOR	
Type	Digital Single Lens Mirrorless camera
Lens mount	Micro Four Thirds mount
Image sensor	Live MOS sensor (17.3 x 13.0 mm)
Camera effective pixels / Total pixels	20.33 megapixels / 21.77 megapixels
AR (Anti Reflection) coating	Yes
Dust reduction system	Image sensor shift type
STILL IMAGE	
Recording file format	JPEG (DCF, Exif 2.31), RAW 6K PHOTO*1: MP4* (H.265/HEVC, Audio format: AAC (2ch)) *Extracted still images: JPEG (DCF, Exif 2.31) 4K PHOTO: MP4* (H.264/MPEG-4 AVC, Audio format: AAC (2ch)) *Extracted still images: JPEG (DCF, Exif 2.31)
Aspect ratio	4:3 / 3:2 / 16:9 / 1:1
File size (pixels) in 4:3	5184x3888 (L) / 3712x2784 (M) / 2624x1968 (S) / 4992x3744 (6K PHOTO) / 3328x2496 (4K PHOTO)
MOTION PICTURE	
Latitude	12 stops (V-Log L)
Recording file format	MOV: H.264/MPEG-4 AVC, H.265/HEVC (Audio format: LPCM (2ch 48kHz/16-bit, 48kHz/24-bit*, 96kHz/24-bit*)) MP4: H.264/MPEG-4 AVC, H.265/HEVC (Audio format: AAC (2ch)) *When attaching DMW-XLR1 (sold separately).
System frequency	59.94Hz / 50.00Hz / 24.00Hz
Vertical position information	ON / OFF
Luminance level	8-bit: 0-255 / 16-235 / 16-255, 10-bit: 0-1023 / 64-940 / 64-1023
LUT view assist	Monitor / HDMI
HLG view assist	Monitor (Mode1 / Mode2 / OFF) / HDMI (Auto / Mode1 / Mode2 / OFF)
Anamorphic desqueeze display	2.0x / 1.8x / 1.5x / 1.33x / 1.30x / OFF
Time code	Rec Run / Free Run selectable, Drop Frame / Non-drop Frame selectable (When 59.94Hz is selected.)
SS/Gain operation	Shutter Duration/ISO / Angle/ISO / Shutter Duration/dB
Other functions	Red REC Frame Indicator, Streaming Blue Frame Indicator, Wave Form Monitor, Vectorscope, Knee Control (in Like709 mode), Master Pedestal Level, Synchro Scan
STREAMING	
Protocol	RTMP / RTMPS
Streaming quality	59.94Hz FHD 1920x1080 59.94p, 16Mbps* / 8Mbps (H.264) *Not selectable when RTMPS is set. 29.97p, 6Mbps / 3Mbps (H.264) HD 1280x720 59.94p, 6Mbps (H.264) 29.97p, 4Mbps (H.264) 50.00Hz FHD 1920x1080 50.00p, 16Mbps* / 8Mbps (H.264) *Not selectable when RTMPS is set. 25.00p, 6Mbps / 3Mbps (H.264) HD 1280x720 50.00p, 6Mbps (H.264) 25.00p, 4Mbps (H.264)
OTHER BASIC PERFORMANCE	
Viewfinder	Approx. 3.68 million dots OLED Live View Finder, Approx. 100% of field of view Magnification in 4:3: Approx. 1.52x / 0.76x (35mm camera equivalent) with 50 mm lens at infinity; -1.0 m <sup>-1</sup> Eye point / Diopter adjustment: Approx. 21 mm at infinity; -1.0 m <sup>-1</sup> / -4.0 +3.0 (dpt)
Rear monitor	Approx. 1.84 million dots TFT LCD monitor, free-angle, 3.0-inch (7.5cm), 3:2 aspect, static touch control
Focus	Type Contrast AF system with DFD technology AF mode Auto Detection (Face, Eye, Body, Animal) / Tracking / 225-Area / Zone (Vertical/Horizontal) / Zone (Square) / Zone (Oval) / 1-Area+ / 1-Area / Pinpoint / Custom 1, 2, 3 (Full area touch is available.) (Scalable AF frame size and flexible AF position.) AF detective range EV -4 - 18 (F2.0, ISO100 equivalent, AFS) Focus ring control Nonlinear / Linear (When a compatible lens is attached.)
Metering range	EV 0 - 18 (F2.0 lens, ISO100 equivalent)
Standard output ISO sensitivity	Still image: Auto / 100 (extended) / 200 / 400 / 800 / 1600 / 3200 / 6400 / 12800 / 25600 (changeable to 1/3 EV step) Creative Video Mode: Auto / 100 (extended) / 200 / 400 / 800 / 1600 / 3200 / 6400 / 12800 (changeable to 1/3 EV step)

\*1 6K PHOTO is a high speed burst shooting function that cuts a still image out of a 4:3 or 3:2 video footage with approx. 18-megapixel (approx. 6000 x 3000 effective pixel count) that the 6K image manages. \*2 For [C4K/60p] [C4K/50p] [4K/60p] [4K/50p] video output, use an HDMI2.0 cable that has the HDMI logo on it, and that is described as "4K compatible". \*3 The camera may stop recording when used in lower or higher than recommended operating temperature: -10 to 40 degrees. \*4 Dust- and splash-resistant does not guarantee that damage will not occur if this camera is subjected to direct contact with dust and water. \*5 When the ambient temperature is high or continuous recording is performed, the camera may stop the recording to protect itself. Wait until the camera cools down. • The Micro Four Thirds™ name and logos are trademarks or registered trademarks of Olympus Corporation in Japan, the United States, the European Union, and other countries and regions. • QuickTime and the QuickTime logo are trademarks or registered trademarks of Apple Inc., used under license therefrom. • USB Type-C™ and USB-C™ are trademarks of USB Implementers Forum. • The terms HDMI and HDMI High-Definition Multimedia Interface, and the HDMI Logo are trademarks or registered trademarks of HDMI Licensing, LLC in the United States and other countries. • The Wi-Fi CERTIFIED™ Logo is a certification mark of Wi-Fi Alliance®. • The Bluetooth® word mark and logos are registered trademarks owned by Bluetooth SIG, Inc. and any use of such marks by Panasonic Corporation is under license. Other trademarks and trade names are those of their respective owners. • QR Code is a registered trademark of DENSO WAVE INCORPORATED. • Other trademarks and trade names are those of their respective owners. • Weight and dimensions shown are approximate. • Design, functions, and specifications are subject to change without notice. • Some accessories are not available in some countries. • The use of recorded or printed materials that are protected by copyright for any purpose other than personal enjoyment is prohibited, as it would infringe upon the rights of the copyright holder.

Image stabilization system	Image sensor shift type (5-axis / 6.5-stop*) *Based on the CIPA standard (Yaw/Pitch direction: focusing distance f=60mm (35mm camera equivalent f=120mm) when H-ES12060 is used.)
Shutter	Type Dual I.S. (6.5-stop* Dual I.S. 2 compatible) *Based on the CIPA standard (Yaw/Pitch direction: focusing distance f=140mm (35mm camera equivalent f=280mm) when H-FS14140 is used.) Type Focal-plane shutter Shutter speed Still image: Bulb (max. 30 minutes), 1/8,000 - 60 Electronic front curtain shutter: Bulb (max. 30 minutes), 1/2,000 - 60 Electronic shutter: Bulb (max. 60 sec), 1/16,000 - 60 Motion picture: 1/16,000 - 1/25 Creative Video M mode / MF mode: 1/16,000 - 1/2
Flash sync speed	Less than 1/250 sec
Burst shooting (mechanical shutter)	AFS/MF: H 12 frames/sec, M 7 frames/sec (with Live View), L 2 frames/sec (with Live View) AFC: H 9 frames/sec (with Live View), M 7 frames/sec (with Live View), L 2 frames/sec (with Live View)
Number of recordable images	RAW / RAW-JPEG: More than 108 images, JPEG: More than 999 images (When using a UHS-II UHS Speed Class 3 standard memory card inserted into card slot 1.) *When recording is performed under the test conditions specified by Panasonic.
Photo style	Standard / Vivid / Natural / L. Classic Neo / Flat / Landscape / Portrait / Monochrome / L. Monochrome / L. Monochrome D / L. Monochrome S / Cinelike D2 / Cinelike V2 / Like709 / V-Log L / Hybrid Log Gamma / My Photo Style 1-10
INTERFACE	
USB	SuperSpeed USB 3.1 Gen1 Type-C
HDMI*2	HDMI HDMI TypeA Monitor-through 4:2:2 10bit (When [Rec Quality] is set to [4:2:2 10bit] or [4:2:0 10bit].) 4:2:2 8bit (When [Rec Quality] is set to [4:2:0 8bit].) Down convert: Auto / 4K / 1080p / 1080i / OFF
Microphone / Speaker	Stereo / Monaural
Mic jack	φ3.5mm for external microphone / external audio device MIC (plug-in power) / MIC / LINE is selectable. Stereo / Lens Auto / Shotgun / Super Shotgun / Manual is selectable when attaching DMW-MS2 (sold separately).
XLR microphone	Yes with DMW-XLR1 (sold separately)
Headphone jack	φ3.5mm
Remote input	φ2.5mm
SD card slot	Slot 1, Slot 2 *Compatible with UHS-I/UHS-II UHS Speed Class 3 standard SDHC/SDXC Memory Cards and UHS-II Video Speed Class 90 standard SDXC Memory Cards.
Wi-Fi®	2.4GHz bands (STA/AP) (IEEE802.11b/g/n), 5GHz bands (STA) (IEEE 802.11a/n/ac)
Bluetooth®	Bluetooth® v4.2 (Bluetooth Low Energy (BLE))
Operating temperature*3 / humidity	-10°C to 40°C (14°F to 104°F) / 10%RH to 80%RH
Dust and splash resistant*4	Yes
POWER	
Battery	Li-ion battery pack (7.2V, 2200mAh, 16Wh) (bundled) USB power supply, USB power charging, USB power delivery
Battery life (CIPA standard)	Approx. 400 images, 1200 images (Power Save LVF mode*) with H-ES12060 / DMW-BLK22 Approx. 410 images, 1200 images (Power Save LVF mode*) with H-FS12060 / DMW-BLK22 *Under the test conditions specified by Panasonic based on CIPA standard. When the time to get in the sleep mode is set to 1 sec.
Continuous recordable time*5	MP4 [4K/60p]: Approx. 120 min / MP4 [FHD/60p]: Approx. 140 min with H-ES12060 / H-FS12060
Actual recordable time*5	MP4 [4K/60p]: Approx. 60 min / MP4 [FHD/60p]: Approx. 70 min with H-ES12060 / H-FS12060
Battery grip	DMW-BGGH5 (sold separately)
DIMENSIONS / WEIGHT / STANDARD ACCESSORIES	
Dimensions (W x H x D)	Approx. 138.5 x 98.1 x 87.4 mm / 5.45 x 3.86 x 3.44 inch (excluding protrusions)
Weight	Approx. 727g / 1.60 lb (SD Memory Card x 1, battery, body), Approx. 647g / 1.43 lb (body only)
Bundled software (download)	LUMIX Sync, LUMIX Network Setting Software, LUMIX Tether, SILKYPIX® Developer Studio SE
Bundled accessories	Body Cap, Hot Shoe Cover, Eye Cup, Flash Synchro Socket Cap, Cover for the Battery Grip Connector, Shoulder Strap, Battery Pack, Battery Charger, AC Adaptor, USB Connection Cable (A-C), Cable Holder, Lens Cap (L kit / M kit), Lens Hood (L kit / M kit), Lens Rear Cap (L kit / M kit)

# Panasonic

## Micro Four Thirds Mirrorless Camera and Lens System



# LUMIX GH5 II

Find out more on  
the new LUMIX GH5M2



**HEVC Advance™**  
Covered by Patents at [patentinfo.hevcadvance.com](http://patentinfo.hevcadvance.com)





## Free Your Creativity. Go Live.

From streaming and delivery-ready shooting to uncompressed log recording suitable for advanced post-production. A hybrid mirrorless camera that meets the needs of all creators.

# LUMIX

Motion. Picture. Perfect.

## PRO VIDEO PERFORMANCE

### Unlimited video recording, multiple modes

The LUMIX GH5M2 offers the multiple recording modes utilized for cinema, broadcasting, and other professional applications. In addition to C4K/4K 60p/50p 4:2:0 10-bit and C4K/4K 30p/25p/24p 4:2:2 10-bit ALL-Intra 400Mbps recording, unlimited recording is offered on all settings.\*

This camera delivers all the quality, flexibility, and creative options required in the widest possible range of video production environments.

\*On condition that the camera is under the environment where the operation is guaranteed and is running on the battery. Recording time depends on the capacity of the battery and the SD Memory Card. Recording may stop in C4K/4K 60p/50p 10-bit and Anamorphic mode automatically to protect the camera.

### C4K/4K 60p/50p 10-bit internal/external simultaneous recording

10-bit video recording capability provides robust color profiles for an advanced post-production workflow. The LUMIX GH5M2 offers simultaneous C4K/4K 60p/50p 4:2:0 10-bit internal recording and C4K/4K 60p/50p 4:2:2 10-bit live output for external recording via HDMI. This compact, lightweight camera offers all the quality you would expect from a high-end digital cinema camera.

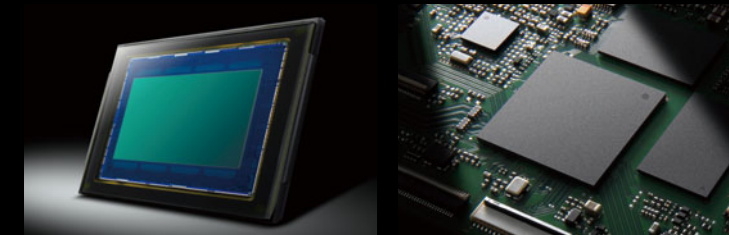


## ADVANCED IMAGE QUALITY

### Enhanced 20.3MP MOS sensor with AR coating

Equipped with 20.3MP MOS Sensor with AR (Anti Reflection) coating. It effectively suppresses flare and captures the expression of light as it is even in a harsh shooting environment surrounded by strong light such as backlight.

And the design without the Low Pass Filter maximizes the resolution. Furthermore, in combination with Venus Engine, maximum ISO25600 (Photo) / ISO12800 (Creative Video mode) is achieved, and at the same time, noise is effectively suppressed even during high-sensitivity shooting, achieving a natural and three-dimensional image. Achieves high-quality visual beauty for both videos and still images.



©Matthew Sutherland

## EASY LIVE STREAMING

### Live streaming using the LUMIX Sync app

Enjoy wireless livestreaming indoors and outdoors with the ease-of-operation afforded by the LUMIX Sync app (Android/iOS). Simply connect the LUMIX GH5M2 to your smartphone and log in to Facebook or YouTube from the LUMIX Sync app menu. You can also manually set up an RTMP/RTMPS connection. Stream live events anytime, anywhere with the quality that only a digital single lens mirrorless camera can offer.

### Live streaming using LUMIX Network Setting Software

Output the streaming settings to the SD card from the LUMIX Network Setting Software, then insert the card into the camera to enable the camera to import the settings.

Streaming Quality	59.94Hz	50.00Hz
FHD 1920 x 1080	59.94p, 16Mbps* / 8Mbps (H.264) 29.97p, 6Mbps / 3Mbps (H.264)	50.00p, 16Mbps* / 8Mbps (H.264) 25.00p, 6Mbps / 3Mbps (H.264)
HD 1280 x 720	59.94p, 6Mbps (H.264) 29.97p, 4Mbps (H.264)	50.00p, 6Mbps (H.264) 25.00p, 4Mbps (H.264)

\*Not selectable when RTMPS is set. •Live streaming to the platforms that comply with RTMP/RTMPS is basically possible (Compatibility with all the platforms is not guaranteed.) There may be the cases where the live streaming is not possible when the service of the platform changes. For more information, please refer to the terms and conditions of the platform. •Android and Google Play are trademarks or registered trademarks of Google Inc. •iOS is a trademark or registered trademark of Cisco in the U.S. and other countries and is used under license. •YouTube™ and the YouTube logo are registered trademarks of Google Inc. •Facebook™ is a registered trademark of Facebook, Inc.





# VIDEO PERFORMANCE THAT MEETS WIDE RANGING CREATIVE NEEDS

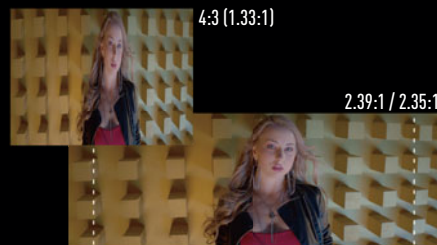
## Pre-installed V-Log L

V-Log L comes pre-installed for 12 stops of dynamic range. Since V-Log L has the same V-Gamut characteristics as V-Log, LUTs used with V-Log can be used in color grading. And footage from VariCam series cameras can be seamlessly included in the edit.



## 6K anamorphic recording

6K anamorphic video (4992x3744) or 4K anamorphic video (3328x2496) is captured in the 4:3 aspect ratio. The Anamorphic Desqueeze Display function means you can shoot while confirming the cinemascope-size image on a monitor.



## VFR (variable frame rate)

VFR functionality supports both overcranking and undercranking.

- Up to 2.5x slow (24p/60 fps) in C4K/4K
- Up to 7.5x slow (24p/180 fps) in FHD
- Up to 15x quick (30p/2 fps) in C4K/4K
- Up to 30x quick (60p/2 fps) in FHD



## Vertical video shooting

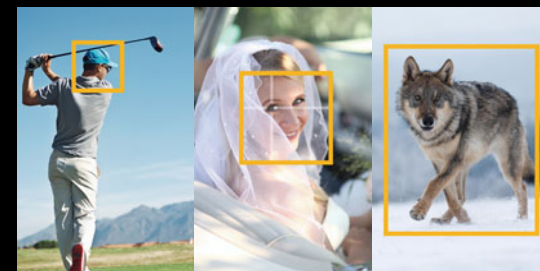
The camera detects the vertical orientation of video, so the image will rotate automatically when you play it back on your smartphone or other device. This can be turned ON or OFF.



# HIGH-QUALITY FUNDAMENTAL PERFORMANCE

## Autofocus featuring AI technology

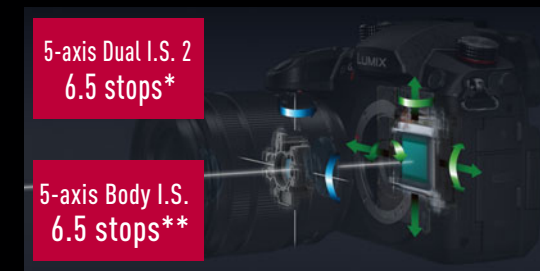
Features high-speed, high-precision AF with DFD (Depth From Defocus) technology, and deep learning technology for recognition of human faces, eyes, heads, and bodies, as well as common animals (dogs, cats and birds).



## 6.5-stop Dual I.S. 2

5-axis Dual I.S. 2 (Image Stabilizer) combines control of the Body I.S. and Lens O.I.S. to offer 6.5 stops' worth of correction.\*

\*Based on the CIPA standard [Yaw/Pitch direction: focusing distance f=140mm (35mm camera equivalent f=280mm) when H-FS14140 is used.  
\*\*Based on the CIPA standard [Yaw/Pitch direction: focusing distance f=60mm (35mm camera equivalent f=120mm) when H-ES12060 is used.



## High-visibility monitor

The LUMIX GH5M2 features a 1840k-dot 3.0-inch free-angle touch monitor. With outstanding brightness and a wide color gamut, it offers high visibility for outdoor shoots, further adding to the convenience and flexibility of the camera.



## Dust/splash/freeze-resistant

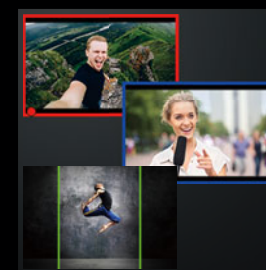
The magnesium alloy full die-cast frame is highly durable, while sealing helps protect every seam, dial, and button. The camera as a whole is dust- and splash-resistant\* and designed for use at temperatures as low as -10 °C.

\*Dust- and splash-resistant does not guarantee that damage will not occur if this camera is subjected to direct contact with dust and water.



## Double SD card slot

Double slot that offers strong support for long-term recording, backup and data management. Both SD card slots are UHS-II SDXC card compatible.



## Enhanced assist functions

Equipped with Frame Maker, which lets you shoot while checking the angle of view such as 2.39:1 or 2.35:1 for films and 4:5 for social media, and Frame Indicator (video is the red frame/ streaming is the blue frame) to prevent shooting mistakes.

MOV	C4K 4K	4096 x 2160 3840 x 2160	4:2:0 10-bit	LongGOP	H.265/HEVC	200Mbps	HLG	VFR	59.94Hz	50.00Hz	24.00Hz	
			4:2:0 8-bit	LongGOP	H.264	150Mbps	-	-	59.94p	50.00p	-	-
MOV	6K-A (4:3)	4992x3744	4:2:2 10-bit	ALL-Intra	H.264	400Mbps	Yes	-	29.97p / 23.98p	25.00p	24.00p	
			4:2:2 10-bit	LongGOP	H.264	150Mbps	Yes	-	29.97p / 23.98p	25.00p	24.00p	
			4:2:0 8-bit	LongGOP	H.264	100Mbps	-	Yes	29.97p / 23.98p	25.00p	24.00p	
			4:2:0 10-bit	LongGOP	H.265/HEVC	200Mbps	Yes	-	29.97p / 23.98p	25.00p	24.00p	
	MOV	4K-A (4:3)	3328 x 2496	4:2:0 10-bit	LongGOP	H.265/HEVC	200Mbps	Yes	-	-	50.00p	-
				4:2:0 8-bit	LongGOP	H.264	150Mbps	-	-	59.94p	50.00p	-
				4:2:2 10-bit	ALL-Intra	H.264	400Mbps	Yes	-	29.97p / 23.98p	25.00p	24.00p
				4:2:2 10-bit	LongGOP	H.264	150Mbps	Yes	-	29.97p / 23.98p	25.00p	24.00p
				4:2:0 8-bit	LongGOP	H.264	100Mbps	-	Yes	29.97p / 23.98p	25.00p	24.00p
				4:2:2 10-bit	ALL-Intra	H.264	200Mbps	Yes	-	59.94p / 29.97p / 23.98p	50.00p / 25.00p	24.00p
				4:2:2 10-bit	LongGOP	H.264	100Mbps	Yes	-	59.94p / 29.97p / 23.98p	50.00p / 25.00p	24.00p
				4:2:0 8-bit	LongGOP	H.264	100Mbps	-	Yes	59.94p / 29.97p / 23.98p	50.00p / 25.00p	24.00p
MP4	4K	3840 x 2160	4:2:0 10-bit	LongGOP	H.265/HEVC	100Mbps	Yes	-	59.94p	50.00p	-	
			4:2:0 10-bit	LongGOP	H.265/HEVC	72Mbps	Yes	-	29.97p / 23.98p	25.00p	-	
			4:2:0 8-bit	LongGOP	H.264	100Mbps	-	-	29.97p / 23.98p	25.00p	-	
			4:2:0 8-bit	LongGOP	H.264	28Mbps	-	-	59.94p	50.00p	-	
	MP4	FHD	1920 x 1080	4:2:0 8-bit	LongGOP	H.264	20Mbps	-	-	29.97p	25.00p	-
				4:2:0 8-bit	LongGOP	H.264	24Mbps	-	-	23.98p	-	-

•Use a card with SD Speed Class with "Class 4" or higher when recording motion pictures in [MP4 (under 28Mbps)]. •Use a card with SD Speed Class with "UHS-I / UHS-II UHS Speed Class 3 [U3]" when recording motion pictures with [MP4] in [4K], [MOV], [6K PHOTO] or [4K PHOTO]. •SD speed class is the speed standard regarding continuous writing. •Use of SD Memory Card with Video Speed Class 60 or higher is recommended for C4K/4K ALL-Intra video recording. •[MOV] motion picture or [MP4] motion pictures in [4K]: When using an SDHC memory card: You can continue recording without interruption even if the file size exceeds 4 GB or 30 minutes, but the motion picture file will be divided and recorded/played back separately. When using an SDXC memory card: You can continue recording without interruption even if the file size exceeds 96 GB or 3 hours 4 minutes in length, but the motion picture file will be divided and recorded/played back separately. •[MP4] motion pictures in [FHD]: You can continue recording without interruption even if the file size exceeds 4 GB or 30 minutes in length, but the motion picture file will be divided and recorded/played back separately. •4:2:2 10-bit recording is a recording mode for film production and the video needs to be processed on PC. The original video cannot be played on standard TV, Blu-ray Disc™ recorder and Blu-ray Disc™ player. It may cause problems such as freezing when played on these devices.

## USB power supply/power charging

Convenient during long shoots in the studio and elsewhere, this feature allows you to supply power to the camera. When used in combination with the separately sold battery charger DMW-BTC15 (USB Power Delivery standard compliant), it can be charged while supplying power.\*

\*Battery must be installed in camera and retain some charge for feature to work.

## New Photo Style settings

Whether you need delivery-ready shooting or just want to minimize post-production, this camera enables you to create distinctive video and still images using a range of styles, including the cinema-like shadows and warm skin tones of Cinelike D2/Cinelike V2; the nostalgic, film-like coloring of L. Classic Neo; and the gentle, portrait-suitable touch of L. Monochrome S.



# HIGHLY SCALABLE SYSTEM

## Compact, lightweight, highly mobile lenses

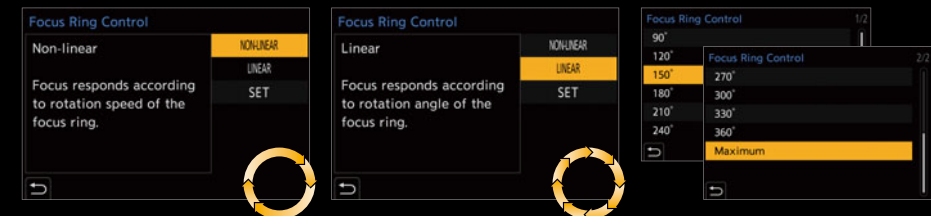
Already pioneers in the field of digital single lens mirrorless cameras, LUMIX's Micro Four Thirds lenses are once again breaking new ground. Combining state-of-the-art digital technology with cutting-edge optics, the new lenses offer uncompromising quality, exceptional image rendering, and an agility able to capture the most fleeting of moments, all in an amazingly compact format. From wide-angle to telephoto, the extensive range delivers top-class performance, whether you are shooting stills or high-quality video. Most lenses are equipped with "MEGA O.I.S." or "POWER O.I.S." (Optical Image Stabilizer) for more efficient hand-held shooting with a telephoto or in low-light conditions. Without a doubt, this remarkable family of lenses will take your creativity to a new dimension.



## Focus Ring Control (LINEAR/NONLINEAR)

Choose the focus ring control setting that feels right to you from either NONLINEAR or LINEAR. When LINEAR is selected, you can set the focus ring rotating angle, enabling you to focus intuitively and accurately in the manner you are accustomed to.

•Compatible lenses: H-E08018, H-X1025, H-ES12060, H-ES50200, H-RS100400, H-XA025, H-ES200, H-HSA12035, H-FS12060, H-HSA35100, H-FSA45200 and H-FSA100300. The firmware programs is available at the LUMIX Global Customer Support site. <https://av.jpn.support.panasonic.com/support/global/cs/dsc/download/index.html>



**LUMIX G Series Lenses**  
 OM Digital Solutions / Tamron / SIGMA / Voigtlander (COSINA) / Kowa Lenses  
<https://www.four-thirds.org/en/lens/>

**M Mount Adaptor DMW-MA2M**  
 LEICA M Mount Lenses  
<http://panasonic.jp/support/global/cs/dsc/connect/mrma.html>

**MC Protector PL Filter ND Filter**  
 Lens Rear Cap  
 Lens Cap

**Body Cap DMW-BDC1**  
**Tripod Adaptor DMW-TA1**

**Battery Pack DMW-BLK22**  
**Battery Grip DMW-BGGH5**  
**Battery Charger DMW-BTC15**

**AC Adaptor DMW-AC10\*1**  
**DC Coupler DMW-DCC17\*1**

**Standard Accessories**  
**DC-GH5M2**

**Bundled Software (Download)**  
 •LUMIX Sync  
 •LUMIX Tether  
 •LUMIX Tether for Streaming (Beta)  
 •LUMIX Webcam Software (Beta)  
 •LUMIX Network Setting Software  
 •SILKYPiX® Developer Studio SE  
 •LoiLoScope Trial Version

**Battery Pack**  
**Shoulder Strap**

**Battery Charger**  
**Cable Holder**

**USB Connection Cable (A-C)**  
**Body Cap**

**AC Adaptor**

**External Flash DMW-FL580L**  
**External Flash DMW-FL360L**  
**External Flash DMW-FL200L**

**LED Video Light VW-LED1**  
**XLR Microphone Adaptor DMW-XLR1**

**Stereo Shotgun Microphone DMW-MS2**  
**Stereo Microphone VW-VMS10**

**Shutter Remote Control DMW-RS2**  
**Tripod Grip DMW-SHGR1**

**Shoulder Strap DMW-SSTG9**

**External Monitor / Recorder**  
**HDMI Cable (HDMI TypeA)\*3**

**SD / SDHC / SDXC Memory Card\*2**  
**4KTV / HDTV**  
**Blu-ray Disc™ Player**

**Personal Computer**

## Wi-Fi® 5GHz bands / Bluetooth®

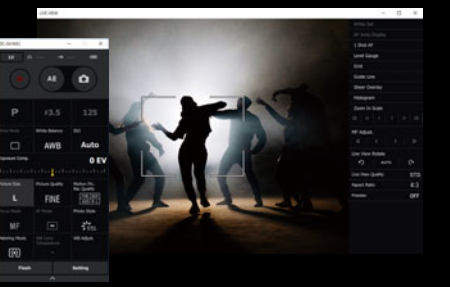
Using Wi-Fi® 5GHz bands (IEEE802.11ac) and Bluetooth® v4.2 (Low Energy) this feature allows you to connect your camera to a smartphone with Panasonic's LUMIX Sync app installed, send photos to that device, control your camera remotely or copy settings from one camera to another.\*

\*Copying must done between cameras of the same model.



## LUMIX Tether

The LUMIX GH5M2 allows tethered shooting via USB with "LUMIX Tether" PC software. It enables camera control and shooting while checking the image on a large PC screen. Naturally, it supports both video and 6K PHOTO/4K PHOTO. This greatly assists professional workflows in commercial photoshoots at studios.



# MAIN PARTS AND CONTROLS

- |                                       |                                  |                        |  |
|---------------------------------------|----------------------------------|------------------------|--|
| 1. Self-timer light / AF assist light | 11. Focus mode lever             | 22. Cable holder mount | 32. WB button                            |
| 2. Flash synchro socket               | 12. Playback button              | 23. [MIC] socket       | ISO button                               |
| 3. [REMOTE] socket                    | 13. Speaker                      | 24. Headphone socket   | Exposure compensation button             |
| 4. Card slot 1, 2                     | 14. Rear dial                    | 25. [HDMI] socket      | 33. Video rec. button                    |
| 5. Preview / Fn2 button               | 15. [DISP.] button               | 26. USB socket         | 34. Charging / [NETWORK] connection lamp |
| 6. Lens release button                | 16. AF mode button               | 27. Drive mode dial    | 35. Hot shoe                             |
| 7. [LVF] button                       | 17. Quick menu button            | 28. Stereo microphone  | 36. Diopter adjustment dial              |
| 8. Eye sensor                         | 18. [MENU/SET] button            | 29. Mode dial          | 37. Mode dial lock button                |
| 9. Joystick / Fn button               | 19. Cursor / Function buttons    | 30. Shutter button     | 38. Camera ON/OFF switch                 |
| 10. [AF ON] button                    | 20. Control dial                 | 31. Front dial         | 39. Recording distance reference mark    |
|                                       | 21. Cancel / Delete / Fn1 button |                        | 40. Photo Style button                   |

