

## System Log and Reporting Analyzer for ZyXEL Security Appliances

- Centralized logging & reporting
- Comprehensive set of predefined reports
- Easy-to-understand graphic reports
- Customizable scheduled reports
- Real time event monitoring

Vantage Report (VRPT) is a reporting system that collects system logs from ZyXEL security appliances including the ZyXEL USG and ZyWALL Series to provide businesses a simple yet comprehensive management platform for improved visibility looking into suspicious network activities and better employee productivity. The ZyXEL Vantage Report presents extensive graphical reports on monitoring security threats, attacks, bandwidth usages and application traffics for administrators to enhance security control over business networks.

### Benefits

#### Web-based, centralized reporting system

ZyXEL Vantage Report is a Web-based, centralized reporting system especially suitable for monitoring multiple networks with ZyXEL security appliances in distributed deployments. The intuitive user interface not only saves administration and installation time, the predefined dashboard and real-time syslog analyses also offer businesses a quick view of network health and situation diagnostics of important devices.

#### Multi-threat reporting

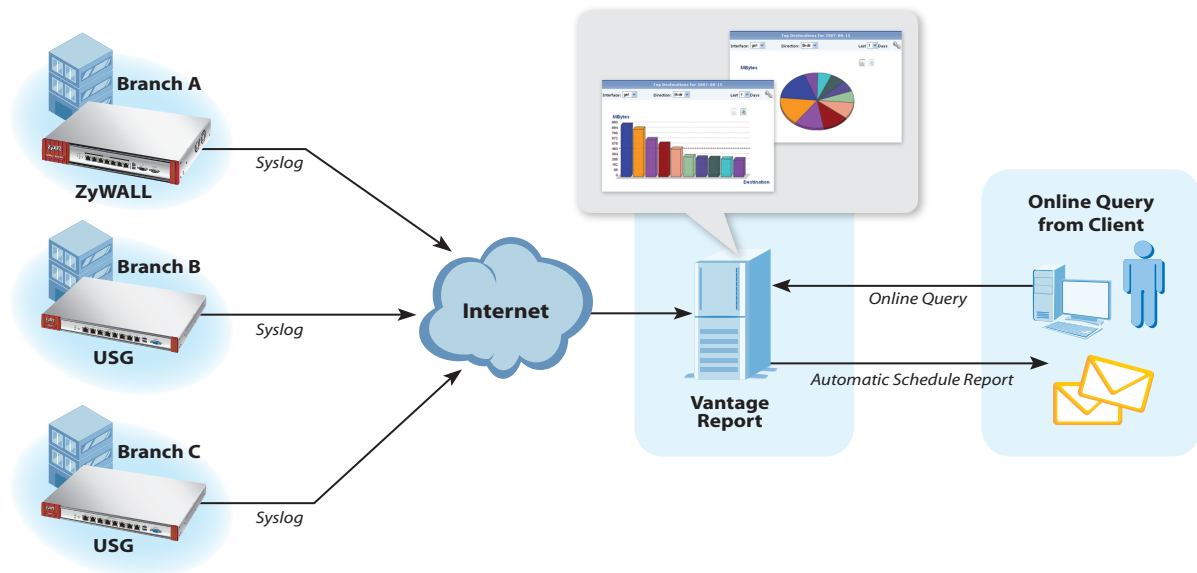
With the Vantage Report, businesses can collect information on thwarted attacks and obtain instant access to threat activities detected by the ZyXEL USG UTM and ZyWALL VPN Firewall Series. The monitoring coverage ranges from network access, site-to-site VPN traffics, intrusion, anti-virus and anti-spam activities as well as bandwidth usage of network applications. The comprehensive information enhances network protection and efficiency through auditing and fine-tuning the policies of the security appliances.

#### Customizable scheduling and reporting

The Vantage Report supports customized report templates with which businesses can easily define multiple report formats and schedule daily or weekly reporting. The activity tracking level can be as granular as individual users to provide greater insight of traffic usages across the entire network regardless of locally or remote sites as well as to get a closer look over application usages, Web sites visited, backup activities and VPN connections of each user.

### Application Diagram

- Login Vantage Report and add device
- Configure USG/ZyWALL to send syslog to Vantage Report
- Vantage Report receives syslog data and store in database
- Vantage Report server generates the report per client's request accordingly



### Specifications

#### Main Functions

- Executive dashboard
- Customizable reports
- Device monitors and logs
- Real-time syslog viewer
- Statistical reports
- Drill-down reports
- Report formats
- Reverse DNS lookup
- Reverse hostname lookup
- Scheduled reports
- System service
- Administration account setup
- File management and data maintenance

#### Log Analysis and Reporting

- View, search and manage logs
- Traffic usage reporting
- Site-to-site VPN reporting
- Network attack reporting
- Security policy reporting
- Event reporting

#### Log Browser and Real-time Log Viewer

- Real-time and historic log viewer
- Log filtering, search
- Log traffic summaries
- Rule-based alert
- Support multi-admin for multiple devices

#### Notification

- Notification sent via mail
- SMS notification via mail or HTTP POST

#### System Requirements

##### Server

- Windows 2003 Server
- Windows Vista (32-bit/64-bit)
- Windows 7 (32-bit/64-bit)

##### Client

- Browser support:
  - Internet Explorer 8.0 or later (32-bit)
  - Firefox 31.0 or later (32-bit)
  - Chrome 36.0 or later (32-bit)
- Supported screen resolution: 1024x768

#### Hardware Requirements

##### Server

The Number of Managed Devices	CPU Specification	Memory
1 ~ 5	Intel Dual Core process 2.6 GHz or above	1 GB
6 ~ 50	Intel Dual Core process 2.6 GHz or above	2 GB
51 ~ 100	Intel Dual Core process 3.2 GHz or above	4 GB

##### Client

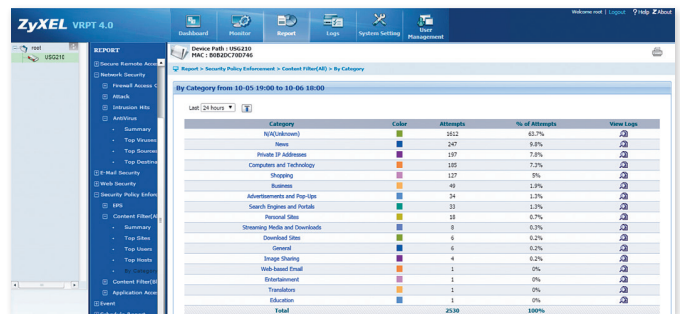
- CPU: Intel Pentium 4 processor 1 GHz or better
- Memory: 512 MB or better

## Visibility and Reporting



## Device Status

- Simplifies reporting to provide administrators with analysis results
- Measure, monitor and report compliance



## TOP Web Site Categorization

- Easily view traffic statistics of Web sites by category
- Reporting traffic statistics and show top Web sites visited



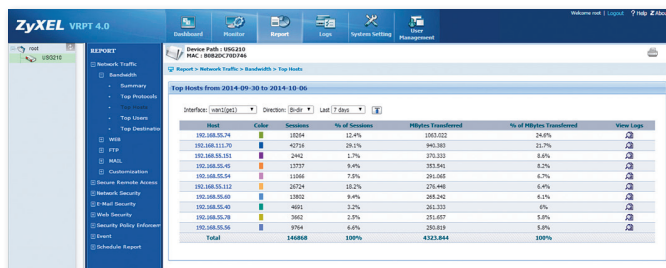
## TOP Applications

- Easily identify applications according to category
- Reporting detected applications with sorted lists



## TOP Virus

- Easily view top threats to the network
- Anti-malware, anti-virus protection for comprehensive protection



### TOP Host (Traffic Usage)

- Identify traffic anomalies easily based on usage data
- Insight of per-user traffic usage

## Supported Model

Product Series	Applied Products
VPN Firewall	ZyWALL 1100/310/110
Next-Gen Unified Security Gateway	Extreme Series USG1900/1100
	Advanced Series USG310/210/110
	Performance Series USG60W/60/40W/40
Unified Security Gateway	USG2000/1000/300
	USG200/100-PLUS/100/50/20W/20

## License Information

- Vantage Report can be downloaded from ZyXEL Web sites
- The software has one free node to manage the ZyXEL USG or ZyWALL models and requires activation at [myZyXEL.com](http://myZyXEL.com) (portal. [myzyxel.com](http://myzyxel.com))
- Scalable license offerings with add 5, 25 or 100 additional devices can be purchased for expansion



For more product information, visit us on the web at [www.ZyXEL.com](http://www.ZyXEL.com)



Copyright © 2014 ZyXEL Communications Corp. All rights reserved. ZyXEL, ZyXEL logo are registered trademarks of ZyXEL Communications Corp. All other brands, product names, or trademarks mentioned are the property of their respective owners. All specifications are subject to change without notice.

