

All-in-One PC for POS, POI, Kiosk Applications

The Shuttle XPC all-in-one X50V7U3 is the latest addition to the X50 Series and is powered by Intel's Core i3-8145U processor. The new Whiskey Lake-U processor architecture helps improve on power consumption and computing power. Thanks to its passive cooling, the system is virtually noiseless, maintenance-free and approved for 24/7 nonstop operation. Particularly suitable for vertical applications is the arrangement of connectors at the bottom and the IP54 compliant front panel which is dust-protected and protected from splashing of water.

Feature Highlights

All-in-One Design	<ul style="list-style-type: none"> XPC all-in-one with touchscreen Small: 391 x 327 x 42 mm (WHL) Stand can also be used as a handle 100 mm VESA mount capable IP54 compliant front panel Approved for 24/7 nonstop operation
Display & Graphics	<ul style="list-style-type: none"> 39.6 cm (15.6") resistive touchscreen with a 1366 x 768 resolution Integrated Intel UHD 620 graphics HDMI 1.4a + D-Sub/VGA Video output
CPU & Cooling	<ul style="list-style-type: none"> Intel Core i3-8145U, 2,1 GHz, 15 W TDP Fanless heatpipe cooling system
Storage (not included)	<ul style="list-style-type: none"> Supports max. 2x 32 GB DDR4-2400 SO-DIMM Supports one 2.5" SATA hard disk / SSD Supports one M.2-2280 SSD (SATA) Supports internal USB stick (USB 2.0, type A)
Operating System	<ul style="list-style-type: none"> Operating system is not included Supports Windows 10/11 & Linux (64-bit)
Connectivity	<ul style="list-style-type: none"> HDMI 1.4a, D-Sub/VGA 4x USB 3.2 Gen 1 (5 Gbps), 2x USB 2.0, internal: 1x USB 2.0 Type A Microphone input, headphones output Gigabit LAN, Wireless LAN 802.11ac, BT 4.2 Optional: 4x RS232, 1x LPT, 1x RJ11
Built-in	<ul style="list-style-type: none"> SD card reader 2.0 Megapixel HD webcam 2x 2 W speakers Electret Condenser Microphone
Power Supply	<ul style="list-style-type: none"> External fanless power adapter, 65 W
Warranty	<ul style="list-style-type: none"> 24 months Bring-in Service

XPC all-in-one Barebone X50V7U3 White



Images for illustration purposes only.



Shuttle Product	Color	Processor Model	Cores / Threads	CPU clock / Turbo	L3-Cache	Intel Graphics
X50V7	Black or White	Celeron 4205U	2 / 2	1.8 / - GHz	2 MB	UHD 610
X50V7U3	Black or White	Core i3-8145U	2 / 4	2.1 / 3.9 GHz	3 MB	UHD 620

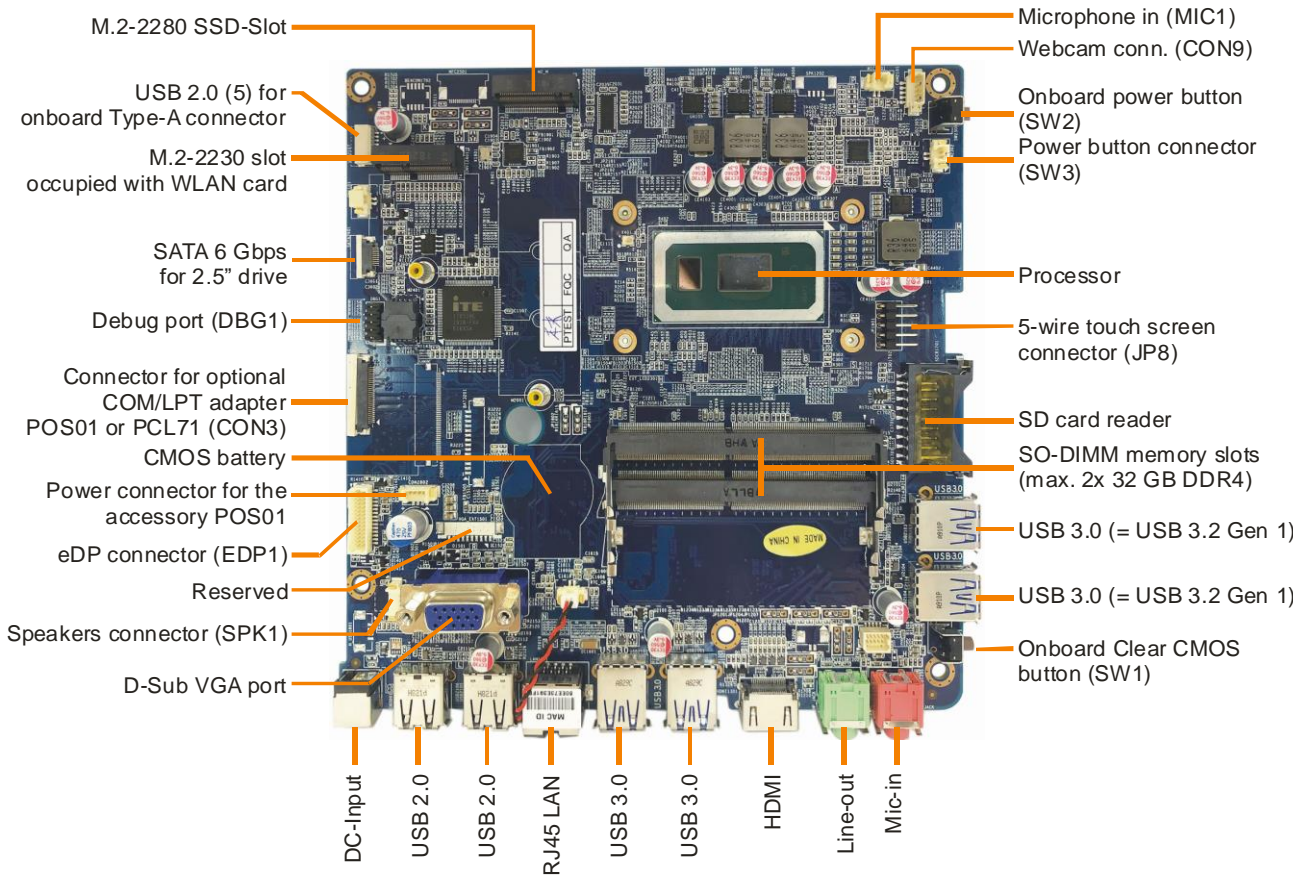


Shuttle XPC all-in-one X50V7U3 – Overview

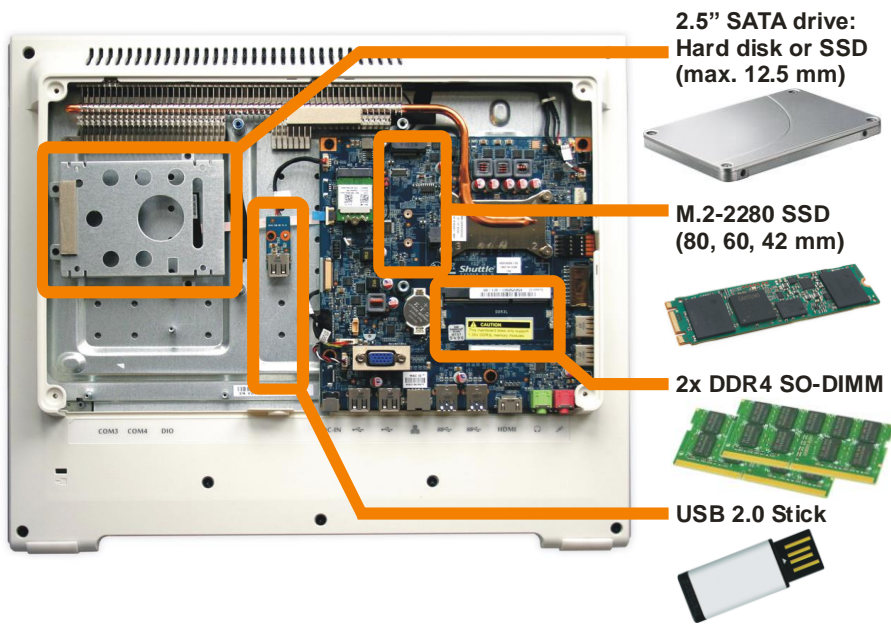


- | | | |
|--|---------------------------|--------------------------------|
| 1 Touchscreen LCD display | 10 Hole with Power Button | 19 DC-input for Power Adapter |
| 2 Webcam | 11 SD Card Reader | 20 2x USB 2.0 |
| 3 Microphone | 12 2x USB 3.2 Gen 1 | 21 RJ45 Gigabit LAN |
| 4 Power-on LED | 13 Clear CMOS Button | 22 2x USB 3.2 Gen 1 |
| 5 Hard disk LED | 14 Stand (handle) | 23 HDMI Video Output |
| 6 Stereo speakers | 15 Ventilation holes | 24 Audio Line-out (headphones) |
| 7 Stylus with holder | 16 Kensington lock | 25 Microphone Input |
| 8 Power-on button | 17 D-Sub/VGA Video Output | |
| 9 2x Perforation for optional WLAN/LTE antenna | 18 Vesa Mount 100x100mm | |

Shuttle XPC all-in-one X50V7U3 – Mainboard



Installable Components:



Shuttle XPC all-in-one X50V7U3 – Special Features



All applications at your fingertips

The innovative touchscreen technology delivers the simplest operation possible and makes the screen the centre of action. Its high-quality design lets you control the whole range of multimedia - music, movies, video playback and web browsers start by just touching the screen.



All-in-One PC

Your complete PC system with many components already built in comes in just one single device! This includes the webcam, microphone, mainboard, display, touchscreen input interface, wireless LAN module and speakers. It helps you save space, looks simply stylish and reduces cable clutter.



24/7 nonstop-operation

The Shuttle XPC all-in-one X50V7U3 is officially approved for 24/7 permanent operation. Thanks to its low power consumption and completely passive cooling, this PC runs highly reliably making it perfectly suitable for digital signage and POI/POS applications.

Conditions for permanent use:

- Free circulation of air amongst the PC must be guaranteed
- Ventilation holes must be kept clear
- If a hard disk is installed, this must also be approved for permanent operation by its manufacturer.



Fanless and quiet

The Shuttle XPC all-in-one X50V7U3 uses a passive thermal module with heatpipes to lead heat out of the case quickly and evenly. The unique fanless design makes it perfect to be used in noise-sensitive environments such as living rooms, hospitals, libraries etc. As an additional benefit, fanless cases rarely gather dust on the inside and stay cleaner than others. So it's not only quiet and low in energy use, but also virtually maintenance-free.



Connects to two external Full HD displays

The Shuttle XPC all-in-one X50V7U3 features two video outputs: One analog D-Sub/VGA connector and one HDMI connector. Two external Full HD displays can be connected in extended mode. Now add the built-in display of the X50V7U3, and there are three displays showing different content.



Protection Class IP54

The front panel of the Shuttle XPC all-in-one X50V7U3 is dust-protected and protected from splashing of water according to IP protection class 54. Consequently, this All-in-One PC can be used for those indoor applications, where the touchscreen may be exposed to humidity and occasional splashing of water. This is particularly welcome in restaurants, laboratories, production or other places.



Optimised Cable Management

Most of the connectors are now located on the back panel facing down. This leads to an effective cable management making for a clean, tidy appearance on the desk.

On the left side sit those connectors which need to be accessed from the front: the card reader and two USB ports.

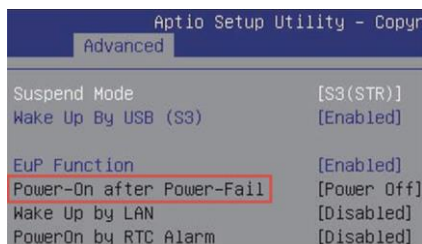


PCL71

POS01

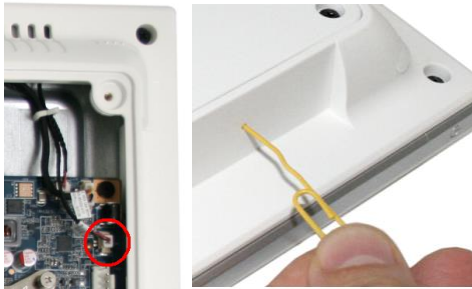
Optional COM, LPT, DIO ports

Shuttle offers two optional accessories in order to add legacy ports to the Shuttle XPC all-in-one X50V7U3. While the Shuttle XPC Accessory **PCL71** adds two serial COM ports and one parallel LPT port, the **POS01** adds two more COM ports (with RJ45 connector) and one Digital I/O 12 V / 24 V (RJ11) for a cash drawer, for example. COM ports are still common in industrial automation systems, scientific analysis, POS systems and other industrial applications.



Power on after Power fail

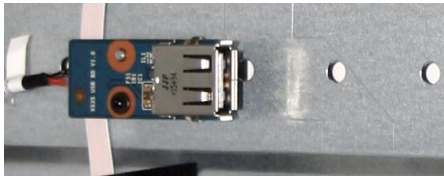
The BIOS setup provides a "Power-On after Power Fail" function that can be found under "Power Management Configuration" where the PC's behaviour after power failure can be determined.



Hidden Power Button

Left photo: The power button can be deactivated to prevent unauthorised use. Just disconnect the appropriate cable from its header inside the chassis (see red circle).

Right photo: The power button can still be pressed using a straightened paper clip.



Internal USB Slot

The Shuttle XPC all-in-one X50V7U3 features an internal USB 2.0 connector (type A) for a USB stick of max. 9 cm in length. This onboard connector support USB sticks (such as flash memory, WLAN or LTE/4G) or other USB devices like a radio module for home automation or RFID.



Perforations for two optional external antennas

Der Shuttle XPC all-in-one X50V7U3 features two 7.5 mm perforations for the installation of two external WLAN or LTE/4G antennas.



VESA mount

The stand on the rear can easily be removed to unveil four VESA mounting screw holes that can be used for mounting arms and other mounting devices from a variety of manufacturers.



Stylus for the touchscreen

The Shuttle XPC all-in-one X50V7U3 is equipped with a 5-wire resistive touchscreen for simple operation by finger (even with gloves) or stylus. The stylus comes supplied as standard and sits in an opening located on the top of the chassis. Using the stylus results in a smoother and more precise input than just using a finger.

© 2021 by Shuttle Computer Handels GmbH (Germany). All information subject to change without notice . Pictures for illustration purposes only.



Kensington Lock

This is a small, metal-reinforced hole as part of an anti-theft system. (Lock and cable not included.)



Carrying handle

The practical stand can be pulled upwards so that it can also be used as a handle making the Shuttle XPC all-in-one X50V7U3 easy to carry.

Shuttle XPC all-in-one X50V7U3 – Range of Applications

Digital Signage
Visual advertising,
Info Terminal



POS
Checkout system in Retail
Stores, Restaurants, Hotels



POS Radio
Playing advertising
and music



Call System
e.g. for nurses (hospital)
or security personnel



Smart Home Control
Surveillance,
Home Automation



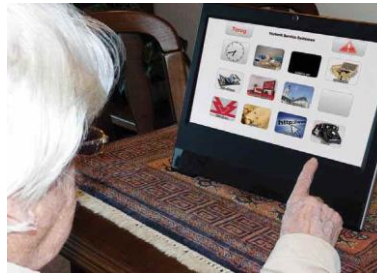
Device Control
e.g. for copy
machines



Device Control
e.g. for health services or
fitness equipment



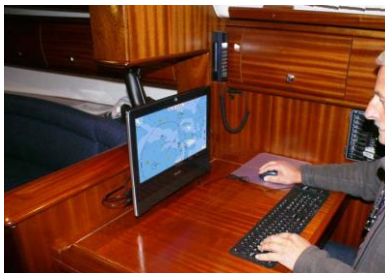
Communication Device
e.g. for the elderly



Visualisation
e.g. for industrial production
machines



On a boat
e.g. for navigation and
entertainment



Data Collector
e.g. Recording of
working hours



Entertainment
e.g. at the dentist or
in the waiting room



Shuttle XPC all-in-one X50V7U3 – Specifications

<i>Fanless and silent</i>	<p>Passive heatpipe cooling, no fan noise at all Perfect to be used in noise-sensitive environments Fanless, dust-free and thus virtually maintenance-free</p>
<i>24/7 nonstop operation</i>	<p>This device is approved for 24/7 permanent operation. Requirements: - Free circulation of air amongst the PC must be guaranteed. - Ventilation holes must be kept clear. - If a hard disk is installed, this must also be approved for permanent operation by its manufacturer.</p>
<i>IP54 protected</i>	<p>The front panel is dust-protected and protected from splashing of water according to protection class IP54.</p>
<i>Chassis</i>	<p>Colour: white Dimensions: 391 x 327 x 42 mm (W x H x D) 100 mm VESA mount capable Mounting hole for Kensington lock Weight: 3.6 kg net, 4.8 kg gross</p>
<i>Operating System</i>	<p>This system comes without operating system. It is compatible with: - Windows 10/11 (64-bit) - Linux (64-bit)</p>
<i>Touchscreen</i>	<p>Touchscreen function supports fingertip input Resistive 5-wire single-touch technology Stylus for the built-in touchscreen</p>
<i>15.6" Display</i>	<p>39.6 cm / 15.6" LCD display, ratio: 16:9 widescreen panel Resolution: 1366 x 768 = 1.05 Megapixel Backlight unit: High power LED, Luminance: 220 cd/sqm Glass thickness: 0.5 mm</p>
<i>Processor</i>	<p>Model: Intel Core i3-8145U (ULV) System-on-a-chip architecture (SoC) with integrated memory and graphics controller: no chipset required FCBGA1528 package - directly soldered onto the mainboard Code name: Whiskey Lake U (8th Generation Intel Core) Cores / Threads: 2 / 4 Clock rate: 1.8 GHz, max. Turbo Frequency: 3.9 GHz L1/L2/L3 Cache: 128 kB / 512 kB / 4 MB TDP wattage: 15 W maximum Manufacturing process: 3rd-generation enhanced 14nm++ Maximum Tjunction Temperature: 100 °C Supports 64-bit, VT-x (EPT), VT-d, Enhanced SpeedStep, NX bit, AES-NI, SSE 4.1/4.2</p>

© 2021 by Shuttle Computer Handels GmbH (Germany). All information subject to change without notice . Pictures for illustration purposes only.

<p><i>Integrated Graphics</i></p>	<p>Intel UHD Graphics 620 GPU clock frequency: 300~1000 MHz Execution Units (EUs): 24 Supports DirectX 12 Supports full H264, H265 8/10 bit, VP8/9, VC-1, AVC hardware decoding Supports Quick Sync Video and Clear Video HD technology</p>
<p><i>Up to three displays</i></p>	<p>Two video ports support two additional independent screens: 1) HDMI 1.4a supports 1920 x 1080 @ 60 Hz or 3840 x 2160 @ 30 Hz 2) VGA / D-Sub analog video supports 1920 x 1080 @ 60 Hz Special conditions for operation in Multi-Monitor mode: 1) Clone mode: all displays show the same content at 1366 x 768 resolution 2) Extended mode: all displays show different content</p>
<p><i>BIOS</i></p>	<p>AMI BIOS in 8 MByte EEPROM with SPI interface Supports Power fail resume / always on Supports Wake-on-LAN (WOL) from S3, S4, S5 ACPI states Supports hardware monitoring and watch dog functionality Supports Firmware TPM v2.0 functionality</p>
<p><i>Memory</i></p>	<p>2x SO-DIMM slot with 260 pins Supports DDR4-2400 (PC4-19200) SDRAM at 1.2 V Supports Dual Channel mode Supports a maximum of 32 GB per DIMM, maximum total size: 64 GB Supports two unbuffered DIMM modules (no ECC or registered)</p>
<p><i>Storage</i></p>	<p>Supports one SATA hard disk or one SATA SSD drive in 6.35 cm /2.5" format The SATA 3.0 interface supports up to 600 MB/s data transfer speed (6 Gbit/s). Supports one drive with up to 12.5 mm in height</p>
<p><i>M.2-2280 Slot</i></p>	<p>The M.2 2280 BM is compatible with SSD cards with SATA interface (max. 6 Gbps) It supports M.2 cards with a width of 22 mm and a length of 80 mm (type 2280).</p>
<p><i>Card Reader</i></p>	<p>Integrated card reader supports SD, SDHC and SDXC memory flash cards</p>
<p><i>Webcam</i></p>	<p>Integrated 2.0 Megapixel (1600 x 1200) HD webcam</p>
<p><i>Microphone, Speakers</i></p>	<p>Front panel with integrated Electret Condenser Microphone and 2x 2W speakers</p>
<p><i>Audio</i></p>	<p>Realtek ALC269 Audio Codec Two analog audio connectors (3.5 mm) on the bottom side: 1) Line-out (headphones) 2) Microphone input Digital Audio is supported via HDMI.</p>

© 2021 by Shuttle Computer Handels GmbH (Germany). All information subject to change without notice. Pictures for illustration purposes only.

<p><i>Wired Network</i></p>	<p>Intel i211 Ethernet Controller with MAC, PHY and PCIe interface Supports 10 / 100 / 1.000 MBit/s operation Supports WAKE ON LAN (WOL) from S3, S4 modes Supports network boot by Preboot eXecution Environment (PXE)</p>
<p><i>Wireless Network</i></p>	<p>Built-in M.2-2230-A/E WLAN card with connectors for two external antennas WLAN Controller Realtek RTL8821AE Supports WiFi IEEE 802.11b/g/n/ac on the 2.4 / 5 GHz band, 1T1R Supports 20 / 40 / 80 MHz channel bandwidth Security: supports WPA(-PSK), WPA2(-PSK), WEP 64/128 bit, IEEE 802.11x, IEEE 802.11i Supports Bluetooth 4.0 on the 2.4 GHz band</p>
<p><i>Front LEDs</i></p>	<p>Power LED (blue) Hard disk LED (orange)</p>
<p><i>Connectors left side</i></p>	<p>Power button 2x USB 3.2 Gen 1 (5 Gbps) SD card reader Hole with power button Hole with Clear CMOS button Perforation for optional WLAN/LTE antenna (diameter: 6.5 mm)</p>
<p><i>Connectors bottom side</i></p>	<p>HDMI 1.4a (supports digital video and digital audio) 2x USB 3.2 Gen 1 (5 Gbps) 2x USB 2.0 Gigabit Network (LAN, RJ45) Audio Line-out / headphones (3.5 mm jack) Microphone input (3.5 mm jack) DC input for external power adapter (5.5 / 2.5 mm) Perforation for optional WLAN/LTE antenna (diameter: 6.5 mm) Optional: 2x COM/serial (RJ45), DIO (RJ11) for cash drawer (accessory POS01)</p>
<p><i>Connectors rear side</i></p>	<p>VGA connector (D-Sub 15 pol., analog video) Optional: 2x COM/serial (D-Sub), 1x LPT/parallel (accessory: PCL71 or POS01)</p>
<p><i>Connectors onboard</i></p>	<p>Internal USB 2.0 type A connector for a USB stick Serial ATA (6 Gbps) Serial ATA power connector 3x USB 2.0 header (all occupied) eDP connector (Embedded DisplayPort) - occupied by the display Connector for optional COM/LPT adapter POS01 or PCL71</p>
<p><i>Power Adapter</i></p>	<p>External 65 W power adapter (fanless) Input: 100~240 V AC, 50/60 Hz, max. 1.6 A Output: 19 V DC, max. 3.42 A, max. 65 W</p>
<p><i>DC Input</i></p>	<p>DC Input Connector: 5.5 / 2.5 mm (outer/inner diameter) The DC-input of the computer supports an external power source with either 12V±5% or 19V±5%.</p>

© 2021 by Shuttle Computer Handels GmbH (Germany). All information subject to change without notice . Pictures for illustration purposes only.

<p><i>Included Accessories</i></p>	<p>Quick Guide Driver DVD External Power Adapter (65W / 19V) with Power cord Serial ATA cable for the 2.5" drive Screws</p>
<p><i>Optional Accessories</i></p>	<p><u>PCL71</u>: COM / LPT adapter: - 1x Parallel (25p D-Sub) - 2x Serial RS232 (9p D-Sub) supports 0 / 5 / 12V <u>POS01</u>: COM / LPT adapter: - 1x Parallel (25p D-Sub) - 2x Serial RS232 (9p D-Sub) supports 0 / 5 / 12V - 2x Serial RS232 (8p RJ45) - 1x DIO/RJ11 connector for cash drawer supports 12 / 24V <u>PF55</u>: Carrying bag</p>
<p><i>Environmental criteria</i></p>	<p>Operating temperature: 0~40 °C Humidity: 10~90 %, non-condensing</p>
<p><i>Certification and Compliance</i></p>	<p>EMI: CE, FCC, BSMI Safety: CB, BSMI, ETL Other compliances: RoHS, ErP Lot6, Energy Star v5.0</p>
<p><i>Conformity</i></p>	<p>This device is classed as a technical information equipment (ITE) in class B and is intended for use in living room and office. The CE-mark approves the conformity by the EU directives: (1) 2014/30/EU relating to electromagnetic compatibility (EMC), (2) 2014/35/EU relating to Electrical Equipment designed for use within certain voltage limits (LVD), (3) 2009/125/EC relating to ecodesign requirements for energy-related products (ErP), (4) 2014/53/EU Radio Equipment Directive (RED)</p>

© 2021 by Shuttle Computer Handels GmbH (Germany). All information subject to change without notice . Pictures for illustration purposes only.

Shuttle XPC all-in-one X50 Series Product Comparison

Model	X50V4	X50V5 Series	X50V6 Series	X50V7 Series
Processor	Intel ULV processor Code name: Haswell-U 22 nm, 15 W TDP	Intel ULV processor Code name: Skylake-U 14 nm, 15 W TDP	Intel ULV processor Code name: Kaby Lake-U 14 nm, 15 W TDP	Intel ULV processor Code name: Whiskey Lake-U 14 nm, 15 W TDP
SKUs	X50V4: Celeron 2957U	X50V5: Celeron 3855U X50V5U3: Core i3-6100U	X50V6: Celeron 3865U X50V6U3: Core i3-7100U	X50V7: Celeron 4205U X50V7U3: Core i3-8145U
Operation System Support	Windows 7 – 64-bit Windows 8.1 – 64-bit Windows 10 – 64-bit Linux – 64-bit	Windows 7 – 64-bit Windows 8.1 – 64-bit Windows 10 – 64-bit Linux – 64-bit	Windows 10 – 64-bit Linux – 64-bit	Windows 10/11 – 64-bit Linux – 64-bit
SSD Card Support	mSATA	M.2-2280BM	M.2-2280BM	M.2-2280BM
Memory Support	Max. 1x 8 GB DDR3L-1600 204-pin SO-DIMM	Max. 1x 16 GB DDR3L-1600 204-pin SO-DIMM	Max. 2x 16 GB DDR4-2133 260-pin SO-DIMM	Max. 2x 32 GB DDR4-2133 (Celeron) DDR4-2400 (Core i3) 260-pin SO-DIMM
USB	2x USB 3.2 Gen 1 4x USB 2.0 1x USB 2.0 onboard	2x USB 3.2 Gen 1 4x USB 2.0 1x USB 2.0 onboard	2x USB 3.2 Gen 1 4x USB 2.0 1x USB 2.0 onboard	4x USB 3.2 Gen 1 2x USB 2.0 1x USB 2.0 onboard
Wired LAN	Realtek RTL8411 Gigabit LAN	Intel i219LM Gigabit LAN	Intel i211 Gigabit LAN	Intel i211 Gigabit LAN
Wireless LAN	Realtek RTL8188EE IEEE 802.11n Internal antenna	Realtek RTL8821AE IEEE 802.11ac + BT 2x internal antenna	Realtek RTL8188EE IEEE 802.11n Internal antenna	Realtek RTL8821CE-CG IEEE 802.11ac, BT 4.2 2x internal antenna
Perforation for optional antenna	1x 9 mm for TV/SAT	1x 9 mm for TV/SAT	1x 9 mm for TV/SAT	2x 6.3 mm for WLAN/LTE
Power adapter	65 W / 19 V	65 W / 19 V (supports 60 W / 12 V)	65 W / 19 V (supports 60 W / 12 V)	65 W / 19 V (supports 60 W / 12 V)
TPM	-	Firmware TPM v2.0 (since 2016-09-13)	Firmware TPM v2.0	Firmware TPM v2.0



© 2021 by Shuttle Computer Handels GmbH (Germany). All information subject to change without notice. Pictures for illustration purposes only.

Shuttle XPC all-in-one – Comparison

Touch Display	Model	Processor	Colour	UPC Code
11.6" 1366 x 768 pixels Capacitive	P20U	Intel Celeron 3865U	Black	887993001487
			White	887993002149
15.6" 1366 x 768 pixels Resistive	X50V7	Intel Celeron 4205U	Black	887993002149
			White	887993002156
	X50V7U3	Intel Core i3-8145U	Black	887993002163
			White	887993002170
15.6" 1920 x 1080 pixels Capacitive	P51U	Intel Celeron 4205U	Black	887993001791
			White	887993002187
19.5" 1600 x 900 pixels Capacitive	P90U	Intel Celeron 3865U	Black	887993001661
			White	887993001890
	P90U3	Intel Core i3-7100U	Black	887993001685
			White	887993001906
P90U5	Intel Core i5-7200U	Black	887993001678	

P20U (11.6")



X50V7 (15.6")



P51U (15.6")



P90U (19.5")

