

Blackmagic Product Guide

Fall 2019

Blackmagicdesign



Welcome

Thank you for picking up the new 2019 Blackmagic Product Guide! This guide features some of our newest post production, broadcast and feature film tools including the latest 8K, HDR and high frame rate products. This year we introduced the new URSA Mini Pro 4.6K G2, Blackmagic Pocket Cinema Cameras, Blackmagic RAW, DaVinci Resolve 16, DaVinci Resolve Editor Keyboard, UltraStudio 4K Mini, a massive new ATEM Constellation 8K live production switcher, HyperDeck Extreme 8K HDR, Blackmagic eGPU Pro and so much more!

We hope you have the time to chat with us at the show and to see our latest Ultra HD, 4K, and 8K products!

Grant Petty

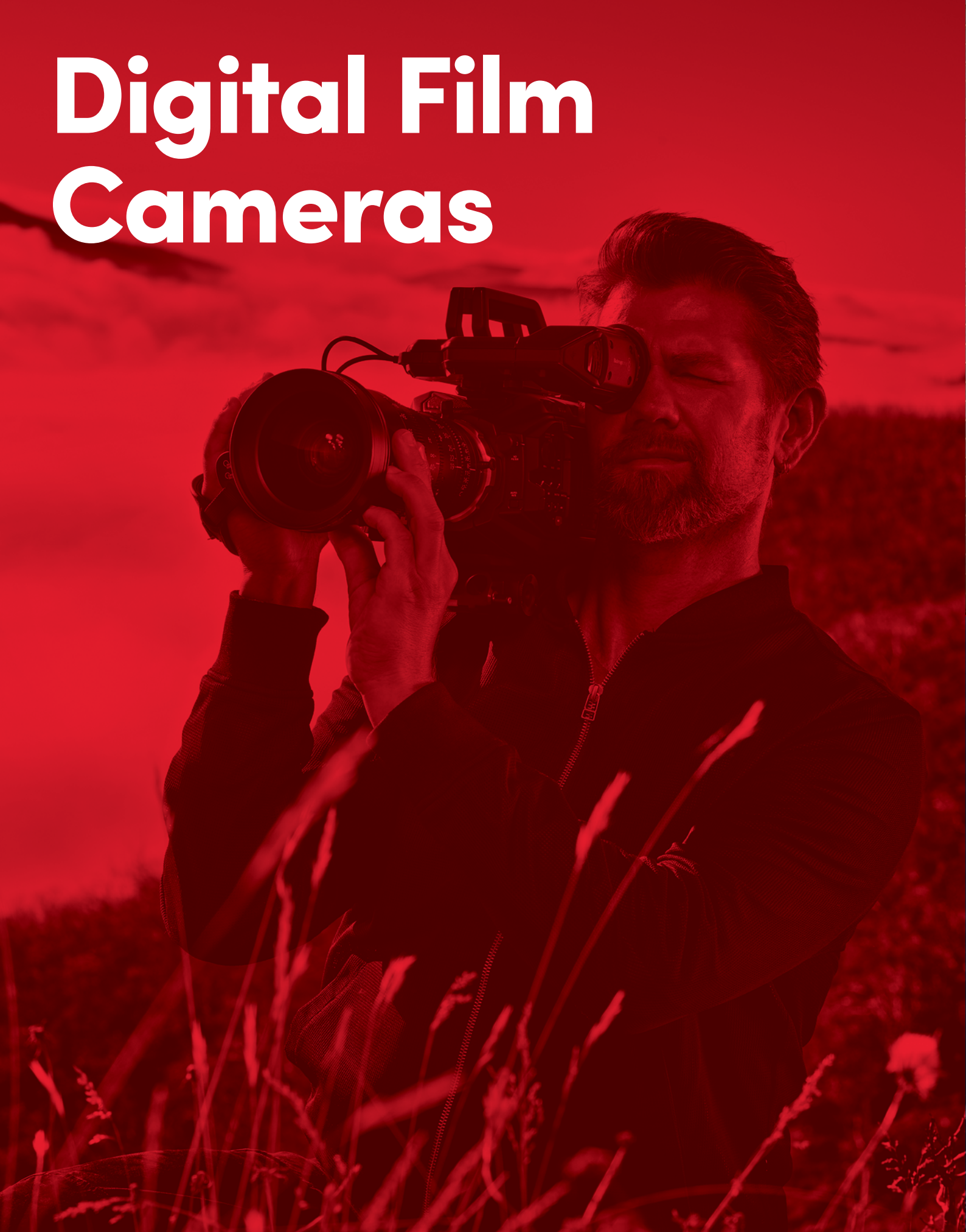


What's Inside

Digital Film Cameras	4	DeckLink Mini Monitor	44
Blackmagic Pocket Cinema Camera 6K	5	DeckLink Mini Monitor 4K	44
Blackmagic Pocket Cinema Camera 4K	6	Intensity Pro 4K	45
Blackmagic Pocket Camera Battery Grip	6	DeckLink Duo 2	45
Blackmagic Pocket Cinema Camera 6K	6	DeckLink SDI 4K	45
Blackmagic Micro Cinema Camera	6	DeckLink Duo 2 Mini	45
Blackmagic URSA Mini Pro 4.6K G2	7	DeckLink Quad HDMI Recorder	46
Blackmagic URSA Mini 4K EF	8	DeckLink 4K Extreme 12G	46
Blackmagic URSA Mini Pro 4.6K G2	8	DeckLink Studio 4K	46
Digital Film Cameras Accessories	9	DeckLink 4K Extreme 12G - Quad SDI	46
		DeckLink 8K Pro	47
		DeckLink Quad 2	47
DaVinci Resolve, Fusion and Blackmagic eGPU	10	Standards Conversion	48
DaVinci Resolve Advanced Panel	11	Mini Converter UpDownCross HD	49
DaVinci Resolve 16	12	Teranex Express	49
DaVinci Resolve Micro Panel	12	Teranex AV	49
DaVinci Resolve Studio 16	12		
DaVinci Resolve Mini Panel	12	Video and Audio Converters	50
Fusion Studio 16	13	Micro Converter BiDirectional SDI/HDMI	51
Blackmagic eGPU	13	Micro Converter HDMI to SDI	52
DaVinci Resolve Editor Keyboard	13	Micro Converter HDMI to SDI wPSU	52
Blackmagic eGPU Pro	13	Micro Converter SDI to HDMI	52
		Micro Converter SDI to HDMI wPSU	52
Cintel Film Scanner	14	Mini Converter HDMI to SDI 6G	53
Cintel Scanner	15	Mini Converter SDI to HDMI 6G	53
Cintel Audio and KeyCode Reader	15	Mini Converter Optical Fiber 12G	53
Cintel Accessories	15	Mini Converter SDI Distribution	53
Everything You Need for Digital Film Production!	16	Mini Converter SDI to Analog	54
		Mini Converter Sync Generator	54
Broadcast and Live Production Cameras	18	Mini Converter Analog to SDI	54
Blackmagic URSA Broadcast	19	Mini Converter SDI Distribution 4K	54
Blackmagic Micro Studio Camera 4K	20	Mini Converter SDI to Audio	55
Blackmagic URSA Broadcast	20	Mini Converter SDI to Audio 4K	55
Blackmagic Studio Camera 4K	20	Mini Converter Audio to SDI	55
ATEM Camera Control Panel	20	Mini Converter Audio to SDI 4K	55
Blackmagic URSA Viewfinder	21	Mini Converter SDI to Analog 4K	56
Blackmagic Camera Fiber Converter	21	Teranex Mini Smart Panel	56
Blackmagic URSA Studio Viewfinder	21	Mini Converter SDI Multiplex 4K	56
Blackmagic Studio Fiber Converter	21	Teranex Mini SDI to HDMI 8K	56
Broadcast and Live Production Cameras Accessories	22	Teranex Mini SDI to HDMI 12G	57
Build a Complete Studio Camera Chain!	24	Teranex Mini SDI to Analog 12G	57
Get Started with Ultra HD Live Production!	26	Teranex Mini HDMI to SDI 12G	57
		Teranex Mini Analog to SDI 12G	57
Live Production Switchers	28	Teranex Mini SDI to Audio 12G	58
ATEM Constellation 8K	29	Teranex Mini Optical to HDMI 12G	58
ATEM Television Studio HD	30	Teranex Mini Audio to SDI 12G	58
ATEM 1 M/E Production Studio 4K	30	Teranex Mini HDMI to Optical 12G	58
ATEM Television Studio Pro HD	30	Teranex Mini SDI Distribution 12G	59
ATEM Constellation 8K	30	Teranex Mini Quad SDI to 12G-SDI	59
ATEM Television Studio Pro 4K	31	Teranex Mini 12G-SDI to Quad SDI	59
ATEM 2 M/E Broadcast Panel	31	Teranex Mini IP Video 12G	59
ATEM 1 M/E Advanced Panel	31		
ATEM Talkback Converter 4K	31	Video and Audio Monitoring	60
		Blackmagic Video Assist 4K	61
Streaming and Encoding	32	Blackmagic Video Assist	62
Blackmagic Web Presenter	33	SmartView Duo	62
		SmartView 4K	62
Disk Recorders, Duplication and Storage	34	SmartScope Duo 4K	62
HyperDeck Extreme 8K HDR	35	Blackmagic MultiView 4 HD	63
HyperDeck Studio Mini	36	Blackmagic MultiView 16	63
HyperDeck Studio	36	Blackmagic MultiView 4	63
HyperDeck Extreme 8K HDR	36	Blackmagic Audio Monitor 12G	63
HyperDeck Studio 12G	36		
Blackmagic Duplicator 4K	37	Routing and Distribution	64
HyperDeck Studio Pro	37	Smart Videohub 12G 40x40	65
Blackmagic MultiDock 10G	37	Smart Videohub 12x12	66
		Smart Videohub 20x20	66
Ultimatte 12	38	Smart Videohub CleanSwitch 12x12	66
Ultimatte Smart Remote 4	39	Smart Videohub 40x40	66
Ultimatte 12	39	Universal Videohub 72	67
		Videohub Smart Control	67
Capture and Playback	40	Universal Videohub Modules	67
UltraStudio 4K Mini	41	Universal Videohub 288	67
UltraStudio Mini	42	Videohub Master Control	67
UltraStudio 4K Mini	42		
UltraStudio HD Mini	42		
UltraStudio 4K Extreme 3	42		
DeckLink Mini Recorder	44		
DeckLink Mini Recorder 4K	44		



Digital Film Cameras



Blackmagic Pocket Cinema Camera 6K shown with optional lens.

Blackmagic Pocket Cinema Camera 6K

Next generation digital film camera with Super 35 sensor, dual native ISO up to 25,600 and direct recording to USB-C disks.

- Digital film camera with a full Super 35 size 6K HDR image sensor.
- Up to 25,600 ISO and wide dynamic range for true digital film.
- Use for independent films, documentaries, blogs and more.
- Records to SD, UHS-II, CFast 2.0 or external USB-C drives.
- 13 stops dynamic range, EF mount, Blackmagic RAW and touchscreen.



Blackmagic Pocket Camera Battery Grip €235

ULTRA HD BLACKMAGIC RAW





Blackmagic Pocket Cinema Camera 4K

Next generation 4K Pocket Cinema Camera with full 4/3 HDR sensor, dual native ISO up to 25,600 and direct recording to USB-C disks.

- Next generation handheld 4K digital film camera.
- Dual native ISO up to 25,600 for great low light performance.
- Great for independent film, pro bloggers, events and more!
- Records to SD, UHS-II, CFast 2.0 or external USB-C drives.
- 4K, 13 stops dynamic range, MFT mount and 5" touchscreen



Blackmagic Pocket Camera Battery Grip

New camera grip attaches to any Pocket Cinema Camera and holds 2 L-Series batteries for over 2 hours of non-stop shooting!

- Battery adapter designed to hold two L-Series batteries.
- Integrated design slots into the existing Pocket Cinema Camera.
- Perfect for anyone that needs to shoot for extended periods of time.
- Carbon fiber design and hand grip for comfortable handheld shooting.
- Batteries can be charged from the Pocket Cinema Camera.



Blackmagic Pocket Cinema Camera 6K

Next generation digital film camera with Super 35 sensor, dual native ISO up to 25,600 and direct recording to USB-C disks.

- Digital film camera with a full Super 35 size 6K HDR image sensor.
- Up to 25,600 ISO and wide dynamic range for true digital film.
- Use for independent films, documentaries, blogs and more.
- Records to SD, UHS-II, CFast 2.0 or external USB-C drives.
- 13 stops dynamic range, EF mount, Blackmagic RAW and touchscreen.



Blackmagic Micro Cinema Camera

Miniaturized digital film camera with expansion port including PWM and S.Bus for remote use, built in SD card recorder for formats up to 1080p60.

- Miniaturized Super 16mm digital film camera.
- Remote control via expansion port with PWM and S.Bus.
- Perfect as a hidden camera or crash cam.
- Cinematic RAW images with 13 stops of dynamic range.
- HD sensor, MFT mount, records RAW and ProRes to SD cards.



Viewfinder, lens and accessories shown can be purchased separately.

Blackmagic URSA Mini Pro 4.6K G2

Next generation 4.6K URSA digital film camera with Blackmagic RAW, high speed frame rates up to 300 fps and direct recording to external USB-C disks!

- Digital film camera available with EF, PL, F or B4 mount.
- New 4.6K Super 35mm HDR sensor designed for high frame rates.
- Perfect for film, television, commercial and independent production.
- Blackmagic RAW recording to SD/UHS-II, CFast, or external USB-C disks.
- External controls, 4" foldout touch screen, USB-C expansion port, pro audio.



Blackmagic URSA Gold Battery Plate €95





Blackmagic URSA Mini 4K EF

Compact and lightweight digital film camera with 4K Super 35 sensor, 12 stops of dynamic range, 12G-SDI, EF lens mount and more.

- Digital film camera with EF mount for high quality photographic lens.
- High dynamic range 4K Super 35mm digital film sensor.
- Perfect for film, television, commercial and independent production.
- RAW or ProRes recording to SD/UHS-II or CFast cards.
- 5" foldout touch screen for control, 12G-SDI, professional audio.

ULTRAHD 12GSDI



Blackmagic URSA Mini Pro 4.6K G2

Next generation 4.6K URSA digital film camera with Blackmagic RAW, high speed frame rates up to 300 fps and direct recording to external USB-C disks!

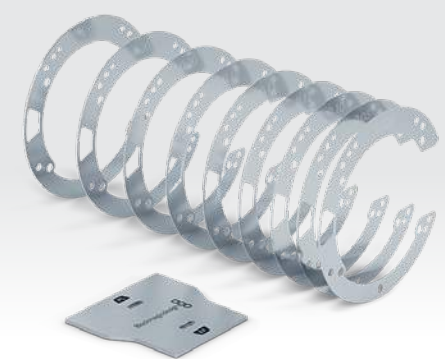
- Digital film camera available with EF, PL, F or B4 mount.
- New 4.6K Super 35mm HDR sensor designed for high frame rates.
- Perfect for film, television, commercial and independent production.
- Blackmagic RAW recording to SD/UHS-II, CFast, or external USB-C disks.
- External controls, 4" foldout touch screen, USB-C expansion port, pro audio.

12GSDI



Blackmagic URSA Mini Pro Shim Kit

Set of 9 shims and baffle tool for precise setting of the flange focal distance for URSA Mini Pro's EF, PL or B4 mount.



Blackmagic URSA Mini Pro EF Mount

The Blackmagic URSA Mini Pro EF Mount kit is available as a spare EF lens mount in addition to the original EF that comes with your URSA Mini Pro.



Blackmagic URSA Mini Pro PL Mount

Optional PL lens mount which features contact pins for compatibility with Cooke's /i Technology protocol allowing lens information to be saved as metadata for use in software such as DaVinci Resolve.



Blackmagic URSA Mini Pro F Mount

Use your favorite Nikon stills lenses with URSA Mini Pro F Mount. Retain smooth, high precision mechanical iris control paired with classic Nikon AF-S G and AF-D series lenses.



Blackmagic URSA Viewfinder

High resolution viewfinder for URSA Mini cameras includes full 1080HD OLED display and precision glass optics for perfect focus.



Blackmagic URSA Mini Shoulder Kit

Perfect for run and gun shooting! Kit includes shoulder pad with built in rosettes, rail mounts, integrated tripod quick lock release and top handle.



DaVinci Resolve, Fusion and Blackmagic eGPU



DaVinci Resolve Advanced Panel

Designed in collaboration with professional colorists, you get three ergonomically connected control surfaces and a pull out keyboard for complete command of every color grading session! Each correction control has a separate soft key, knob, high resolution weighted trackball or ring so you can experiment quicker to create a wider range of looks!

- High end control panel with trackballs, soft knobs, buttons, jog/shuttle and more.
- Quick, one touch access to virtually every color parameter and control.
- Designed for professional colorists working on film, television and commercials.
- Adjust multiple parameters simultaneously with complete responsiveness.
- Perfect for high end work with a client over your shoulder on a tight deadline.

Includes
DaVinci
Resolve
Studio

Mac • Windows • Linux

DaVinci Resolve, Fusion and Blackmagic eGPU



DaVinci Resolve 16

Revolutionary new tools for editing, color correction, audio post, VFX and new cut page, all in a single application!

- Professional editing, color, audio, and visual effects software.
- New cut page for incredible editing speed, ideal for fast turn work.
- Dual timeline to edit and trim without zooming and scrolling.
- Perfect for students, corporate video, AV, indie filmmakers and more.
- Legendary DaVinci image processing and color tools, audio and VFX tools.



DaVinci Resolve Studio 16

Hollywood tools for professional editing, color correction, audio post, visual effects and multi-user collaboration!

- High end software for editing, color correction, audio post and VFX.
- New cut page designed for editors working on high end, fast turn work.
- Multi-user collaboration allows simultaneous work in the same project.
- Professional features with dozens of filters, effects, 3D, HDR and more.
- 8K editing, neural engine with face recognition and GPU scopes.



DaVinci Resolve Micro Panel

Portable, low profile panel featuring three professional trackballs, knobs and buttons for quick access to the most essential color grading controls.

- Portable control panel for on-set or mobile color correction.
- Includes 3 high resolution trackballs, high quality knobs and buttons.
- Use with laptops, on-set and in broadcast trucks.
- Get easy access to essential color correction features.
- Create looks quickly by adjusting multiple parameters at once.



DaVinci Resolve Mini Panel

High quality control panel with three track balls, two display screens plus control buttons and knobs for switching tools, adding color correctors and more.

- Compact, high quality panel for creating unique color looks.
- High resolution trackballs, professional weighted knobs and buttons.
- Ideal for editors and colorists switching between editing and grading.
- Adjust multiple parameters at once to easily create complex looks.
- Dual LCD screens, navigation buttons, primary controls and more.

DaVinci Resolve, Fusion and Blackmagic eGPU



Fusion Studio 16

Fusion Studio 16 adds METAL and CUDA GPU acceleration, 3D engine and playback optimization and more.

- Feature film quality 2D and 3D visual effects compositing.
- High end broadcast quality and cinematic motion graphics.
- Import, light, texture, shade and render full 3D models and scenes.
- Includes paint, particles, rotochrome, keying and more.
- Create custom pipeline workflows with Python and LUA scripting.



DaVinci Resolve Editor Keyboard

New premium keyboard with dedicated edit keys and search dial allows dramatically faster editing.

- Enables faster editing than possible on NLE software.
- All metal design for increased strength.
- Integrated search dial control.
- Source tape allows faster clip searching.
- Buttons to instantly re-sort bins, large trim in and out buttons



Blackmagic eGPU

Powerful Thunderbolt 3 external GPU delivers desktop performance on a laptop for gaming, VR and pro apps.

- External graphics processor for accelerating professional software.
- Designed in collaboration with Apple for Thunderbolt 3 computers.
- Ideal for video editors working on MacBook Pro, gamers and more.
- Radeon Pro 580 GPU, dual Thunderbolt 3, 4 USB connections and HDMI.
- 85W downstream power via Thunderbolt to power laptop and peripherals.



Blackmagic eGPU Pro

Get workstation class acceleration with Blackmagic eGPU Pro featuring Thunderbolt 3 and Radeon Vega 56 graphics.

- High performance external graphics processor.
- Designed in collaboration with Apple for Thunderbolt 3 computers.
- Ideal for video editors, colorists, and visual effects artists.
- Radeon Vega 56 GPU, dual Thunderbolt 3, four USB connections, and HDMI.
- 85W downstream power via Thunderbolt to power laptop and peripherals.

Cintel Film Scanner



Cintel Scanner

Real time 35mm and 16mm film scanner with Thunderbolt 3, PCIe and advanced film scanning technology for converting archives to Ultra HD or scanning new film for post production!

- Real time 4K film scanner for Mac and Windows computers.
- High intensity diffuse light source dramatically reduces dust and scratches.
- Perfect for generating HDR Ultra HD content from original film source.
- Innovative elegant architectural design provides smooth, vibration free scans.
- Includes DaVinci Resolve Studio software for controlling scanner.



Cintel Audio and KeyCode Reader

Add high quality real time optical and magnetic audio reading plus KeyCode from your Cintel Scanner.

- Optional accessory for capturing professional audio and KeyCode when scanning film.
- Features magnetic audio head with deep red LED illumination with advanced optics.
- Precisely adjust azimuth, zenith and yaw to get the best audio capture.
- Simple to install by end users by bolting onto the front of the scanner.

Cintel Accessories

Cintel Cleaning Roller Kit

Replacement set of 4 sticky rollers for particle, dust removal and film cleaning during scanning!

Blackmagic PCI Express Cable Kit

High speed PCIe plug-in card and PCIe cable for connecting computers to a Cintel Scanner when not using a Thunderbolt 3 computer.

Cintel Scanner 16mm Gate HDR

This optional kit includes a 16mm skid plate, 2 inner spacers, 2 outer spacers and 2 x 3" film cores!

Cintel Scanner 35mm Gate HDR

Although one 35mm HDR gate is included with the Cintel scanner, you can purchase a spare if required!

Includes
DaVinci Resolve Studio!





Everything You Need for Digital Film Production!

1 Start with Your Digital Film Camera



12G-SDI



Blackmagic URSA Mini Pro 4.6K G2

Next generation URSA Mini Pro with Super 35 4.6K HDR sensor, 15 stops of dynamic range and high frame rate shooting up to 300 fps.

- Digital film camera available with EF, PL, F or B4 mount.
- New 4.6K Super 35mm HDR sensor designed for high frame rates.
- Perfect for film, television, commercial and independent production.
- Blackmagic RAW recording to SD/UHS-II, CFast, or external USB-C disks.
- External controls, 4" foldout touch screen, USB-C expansion port, pro audio.

ULTRAHD 12GSDI BLACKMAGICRAW

2 Add Pro Viewfinder

Blackmagic URSA Viewfinder

High resolution viewfinder for URSA Mini cameras includes full 1080HD OLED display and precision glass optics for perfect focus.

- High resolution electronic viewfinder.
- Optical quality 1920x1080 display.
- Ideal for handheld over the shoulder shooting.
- High precision glass optics and color display.
- Tally indicator, on screen menus, standard SDI and power.

3 Edit, Color Correct and Finish

DaVinci Resolve Studio 16

Hollywood tools for professional editing, color correction, audio post, visual effects and multi-user collaboration!

- High end software for editing, color correction, audio post and VFX.
- New cut page designed for editors working on high end, fast turn work.
- Multi-user collaboration allows simultaneous work in the same project.
- Professional features with dozens of filters, effects, 3D, HDR and more.
- 8K editing, neural engine with face recognition and GPU scopes.

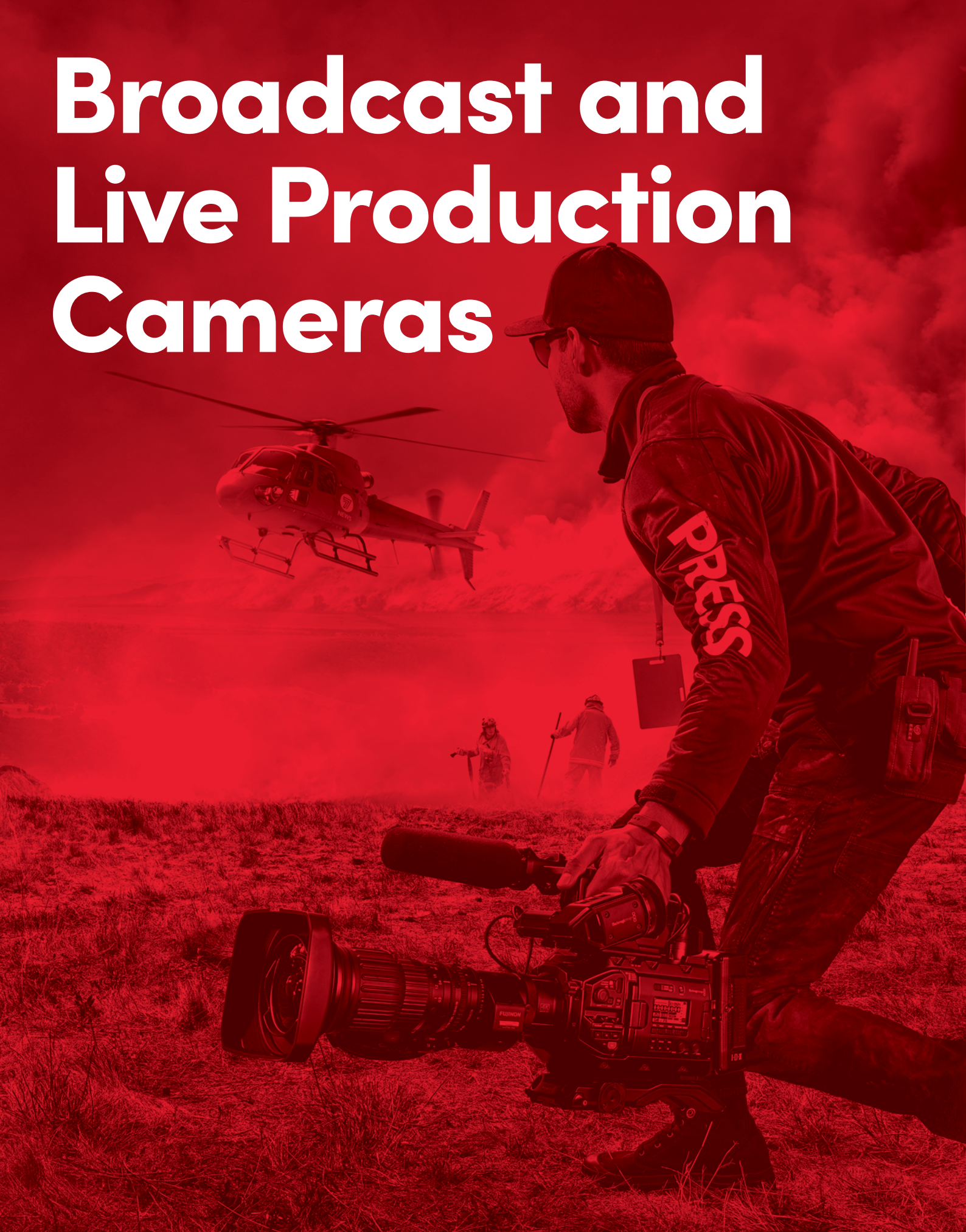
4 Add Color Control Panel for a Cinematic Look

DaVinci Resolve Mini Panel

High quality control panel with three track balls, two display screens plus control buttons and knobs for switching tools, adding color correctors and more.

- Compact, high quality panel for creating unique color looks.
- High resolution trackballs, professional weighted knobs and buttons.
- Ideal for editors and colorists switching between editing and grading.
- Adjust multiple parameters at once to easily create complex looks.
- Dual LCD screens, navigation buttons, primary controls and more.

Broadcast and Live Production Cameras



Shown with optional Blackmagic Camera Fiber Converter, Blackmagic URSA Viewfinder, Blackmagic URSA Mini Shoulder Kit and Lens.

Blackmagic URSA Broadcast

Advanced HD and Ultra HD broadcast camera with extended video dynamic range, ND filters, B4 mount, external controls and more!

- Professional broadcast camera for HD and Ultra HD.
- Works with B4 lenses and batteries you already own.
- Perfect for field ENG work or as a studio camera.
- Record onto standard SD, UHS-II or CFast 2.0 cards.
- 2/3" 4K sensor, B4 mount, ND filters, broadcast controls.



Blackmagic URSA Mini Shoulder Kit €385

ULTRA HD 12G SDI



Blackmagic Micro Studio Camera 4K

The world's smallest HD and Ultra HD live studio camera that can be remote controlled via SDI!

- World's smallest Ultra HD live production camera.
- Remote controllable from ATEM switcher via 6G-SDI.
- Ideal hidden camera for live multi camera production.
- Remote control via PTZ, S.Bus, PWM and SDI.
- 6G-SDI, MFT mount, talkback, tally, mic and LANC.

ULTRAHD 6GSDI



12G-SDI

Blackmagic Studio Camera 4K

Self contained 12G-SDI broadcast camera for live production with 10" viewfinder, MFT lens mount and support for up to 2160p60.

- Ultra HD studio camera with massive built in 10" viewfinder.
- 12G-SDI for working up to 2160p60.
- Great all in one Ultra HD camera for live production.
- Unique integrated viewfinder, talkback and tally.
- 4K sensor, MFT mount, 12G-SDI, XLR, tally, talkback.

ULTRAHD 12GSDI



Blackmagic URSA Viewfinder

High resolution viewfinder for URSA Mini cameras includes full 1080HD OLED display and precision glass optics for perfect focus.

- High resolution electronic viewfinder.
- Optical quality 1920x1080 display.
- Ideal for handheld over the shoulder shooting.
- High precision glass optics and color display.
- Tally indicator, on screen menus, standard SDI and power.



Blackmagic URSA Studio Viewfinder

Professional studio viewfinder for URSA Mini cameras, perfect for live production use!

- Professional 7" studio viewfinder.
- Large handles and articulated mount.
- Tally light, control knobs, function buttons.
- Perfect for studio shows or live events.
- Includes V-Lock plate for use on any camera.



12G-SDI

Blackmagic URSA Broadcast

Advanced HD and Ultra HD broadcast camera with extended video dynamic range, ND filters, B4 mount, external controls and more!

- Professional broadcast camera for HD and Ultra HD.
- Works with B4 lenses and batteries you already own.
- Perfect for field ENG work or as a studio camera.
- Record onto standard SD, UHS-II or CFast 2.0 cards.
- 2/3" 4K sensor, B4 mount, ND filters, broadcast controls.

ULTRAHD 12GSDI



ATEM Camera Control Panel

Control up to 4 cameras at the same time with controls for iris, shutter speed, color, master gain, pedestal, and much more!

- 4 professional camera control units in one.
- Control up to 4 cameras at the same time!
- Control and color correct cameras during live production.
- Familiar broadcast design with independent screens for each camera.
- Control iris, shutter speed, white balance, master gain, pedestal.



12G-SDI

Blackmagic Camera Fiber Converter

Connect and power cameras up to 2 km away with video, talkback, control and power, all over a single SMPTE fiber cable!

- Connects camera to switchers up to 2 km away via SMPTE fiber.
- Adds studio camera controls to your broadcast camera.
- Use on live productions to place cameras long distances away.
- Supports main Ultra HD camera feed plus 3 HD return feeds.
- 12G-SDI, talkback, return feeds, PTZ, tracker, DC and more.

ULTRAHD 12GSDI



12G-SDI

Blackmagic Studio Fiber Converter

Connect to remote cameras up to 2 km away with video, talkback, control and power all over a single cable!

- Extend and power cameras up to 2 km away via SMPTE fiber.
- Converts SMPTE fiber back into standard connections.
- Use on live programs where cameras are far from switcher.
- Uses standard IP link for low latency multi channel video.
- 5" screen, standard SMPTE optical fiber, fail safe power.

ULTRAHD 12GSDI



Broadcast and Live Production Cameras Accessories

Cable - Din 1.0/2.3 to BNC Female

High quality 200mm 6G-SDI cable to connect mini BNC Din 1.0/2.3 connections on the Blackmagic Micro Studio Camera to full size BNC cables!

Cable - Din 1.0/2.3 to BNC Male

High quality 440mm 6G-SDI cable to connect mini BNC Din 1.0/2.3 connections on the Blackmagic Micro Studio Camera to full size BNC connections!

Cable - Din 1.0/2.3 to Din 1.0/2.3

High quality 200mm 6G-SDI cable to connect the mini BNC Din 1.0/2.3 connections on the Blackmagic Micro Studio Camera to Din 1.0/2.3 connections!

Mini XLR Adapter Cables

Adapter cable for connecting to professional audio equipment which use full size XLR connectors!

Power Supply

Universal 110V-240V power supply with international socket adapters for supplying AC power to Video Assist while simultaneously recharging the dual LP-E6 batteries!

LP-E6 Battery

2000 mAh LP-E6 compatible lithium-ion rechargeable battery compatible with Blackmagic Video Assist and Blackmagic Micro Cameras!

Expansion Cable

Add 12V power, reference input, LANC, composite video output, PWM and S.Bus servo connections to the Micro Cinema Camera with this expansion cable!

B4 Control Adapter Cable

Adapter cable for connecting B4 broadcast lenses to Blackmagic Micro Studio Camera 4K. Supports digital lens control and powers lens from external power supply!

Micro Studio Camera 4K Expansion Cable

Add 12V power, reference input, LANC, B4 lens control, PTZ control and S.Bus digital servo connections to Micro Studio Camera 4K with this expansion cable!

URSA PL Shim Set

Set of 8 shims for changing the flange focal distance for PL lenses with URSA PL and URSA Mini PL.

3G-SDI SFP Optical Module

Optical fiber modules that work in SD and HD for adding optical fiber to your Blackmagic Studio Camera!

Blackmagic URSA Mini Pro Shim Kit

Set of 9 shims and baffle tool for making precise changes to the flange focal distance for URSA Mini Pro's EF, PL or B4 mount!

Blackmagic 3G-SDI Shield for Arduino

Now you can control Blackmagic Design cameras by inserting control commands into the SDI feed from an Arduino!

Blackmagic URSA VLock Battery Plate

VLock compatible battery plate for attaching third party batteries to URSA cameras!

Blackmagic URSA Gold Battery Plate

Gold mount compatible battery plate with Molex connector for attaching third party batteries to URSA cameras!

Blackmagic URSA Mini Mic Mount

Add a shock and vibration isolated professional microphone mount to your URSA Mini or URSA Mini Pro camera!

Blackmagic Studio Fiber Rack Kit

Rack mount up to 2 Blackmagic Studio Fiber Converters side by side with this lightweight kit that's perfect for road cases or equipment racks!

6G-SDI SFP Optical Module

Optical fiber modules that work in SD, HD and up to Ultra HD for adding optical fiber to your Blackmagic Studio Camera!

Blackmagic URSA Mini Shoulder Kit

Be ready to shoot anywhere! Kit includes shoulder pad with built in rosettes, rail mounts, integrated tripod quick lock release and top handle.

Blackmagic URSA Mini SSD Recorder

Now you can record Cinema DNG or ProRes files onto standard 2.5" SSD Media with your URSA Mini or URSA Mini Pro camera!





Build a Complete Studio Camera Chain!

1

Start with Your Live Production Camera



12G-SDI

+

2

Add a Studio Viewfinder



2

+

3

Plus a Fiber Converter



12G-SDI

+

4

And a Control Panel



12G-SDI

Blackmagic URSA Broadcast

Advanced HD and Ultra HD broadcast camera with extended video dynamic range, ND filters, B4 mount, external controls and more!

- Professional broadcast camera for HD and Ultra HD.
- Works with B4 lenses and batteries you already own.
- Perfect for field ENG work or as a studio camera.
- Record onto standard SD, UHS-II or CFast 2.0 cards.
- 2/3" 4K sensor, B4 mount, ND filters, broadcast controls.

ULTRA HD 12G SDI

Blackmagic URSA Studio Viewfinder

Professional studio viewfinder for URSA Mini cameras, perfect for live production use!

- Professional 7" studio viewfinder.
- Large handles and articulated mount.
- Tally light, control knobs, function buttons.
- Perfect for studio or events.
- Includes V-Lock plate.

Blackmagic Camera Fiber Converter

Connect and power cameras up to 2 km away with video, talkback, control and power, all over a single SMPTE fiber cable!

- Connects camera to switchers up to 2km away via SMPTE fiber.
- Adds studio camera controls to your broadcast camera.
- Use on live productions to place cameras long distances away.
- Supports main Ultra HD camera feed plus 3 HD return feeds.
- 12G-SDI, talkback, return feeds, PTZ, tracker, DC and more.

ULTRA HD 12G SDI

Blackmagic Studio Fiber Converter

Connect to remote cameras up to 2 km away with multiple channels of video, talkback, control and power all over a single cable!

- Extend and power cameras up to 2 km away via SMPTE fiber.
- Converts SMPTE fiber back into standard connections.
- Use on live programs where cameras are far from switcher.
- Uses standard IP link for low latency multi channel video.
- 5" screen, standard SMPTE optical fiber, fail safe power.

ULTRA HD 12G SDI

24 Broadcast and Live Production Cameras

Learn more at www.blackmagicdesign.com

Broadcast and Live Production Cameras 25



Get Started with Ultra HD Live Production!

1
Start with a Switcher

ATEM Television Studio Pro 4K

New model includes 8 standards converted 12G-SDI inputs, new Fairlight audio mixer, ATEM Advanced Chroma Key and motion media clips!

- 8 input 12G-SDI all in one live production switcher and control panel.
- Full re-sync and standards converter on every input for mixing formats.
- Designed for broadcast, professional, AV and YouTube live streaming.
- Works in all popular HD and Ultra HD formats up to 2160p60.
- New Fairlight audio mixer, keyers, Ultra HD multi view out, DVE and more.

2
Add a Studio Camera

Blackmagic Studio Camera 4K

12G-SDI broadcast camera for live production with 10" viewfinder, MFT lens mount and support for up to 2160p60.

- Ultra HD studio camera with massive built in 10" viewfinder.
- 12G-SDI for working up to 2160p60.
- Great all in one Ultra HD camera for live production.
- Unique integrated viewfinder, talkback and tally.
- 4K sensor, MFT mount, 12G-SDI, XLR, tally, talkback.

3
Add Recording and Playback

HyperDeck Studio Mini

Miniaturized broadcast deck with dual UHS-II SD card recorders for non-stop recording in all formats up to 2160p30!

- Miniaturized 6G-SDI deck for all formats up to 2160p30.
- Dual SD/UHS-II card slots for non-stop recording.
- Built in LCD, VTR style controls and HDMI monitor out.
- Records broadcast quality 10-bit ProRes and HD H.264.
- ProRes 4:4:4 fill and key playback in HD.

4
Add Live Streaming

Blackmagic Web Presenter

Make any SDI and HDMI video source look like a 720p USB webcam for high quality streaming to YouTube, Facebook, Skype and more!

- Use 12G-SDI and 4K HDMI sources for live web streaming.
- Works with SD, HD and Ultra HD sources up to 2160p60.
- Built in Teranex processing converts video into 720p HD.
- Connects via USB and looks like a webcam to your computer.
- XLR mic input for lapel or desktop microphones.

ULTRAHD 12GSDI

ULTRAHD 12GSDI

ULTRAHD 12GSDI

ULTRAHD 12GSDI

Live Production Switchers



ATEM Constellation 8K

Powerful 8K live production switcher that's also a massive 4K switcher with 40 12G-SDI inputs, ATEM Advanced Chroma Keys, DVE, talkback, multi view, Fairlight audio and more!

- 40 multi rate 12G-SDI inputs with up and cross converters on all inputs.
- 24 completely independently assignable 12G-SDI outputs.
- Designed for massive live multi camera programs and events.
- Connect 40 sources up to 2160p59.94 or 10 sources at 8K 4320p59.94.
- 8K transitions, DVE, graphics, talkback, Fairlight audio and more.

ULTRA HD 12G SDI





ATEM Television Studio HD

The world's first live production switcher for broadcast, professional and AV users with HDMI and SDI inputs, talkback, multi view, DVE, audio mixer, flash media players and more!

- Advanced production switcher with 4 SDI and 4 HDMI inputs.
- Compact 2/3 1RU rack mount design with full front panel controls.
- Designed for broadcast, professional, AV and YouTube live streaming.
- Works in all popular 1080 HD and 720p HD formats up to 1080p59.94.
- Multi view, talkback, audio mixer and 2D DVE and media playback.

3G SDI



ATEM Television Studio Pro HD

The world's first all in one live production switcher with integrated hardware control panel, SDI and HDMI inputs, DVE, keyers, talkback, multi view and more!

- Live production switcher with control panel and 4 SDI, 4 HDMI inputs
- Combined switcher and control panel for all formats up to 1080p59.94.
- Designed for broadcast, professional, AV and YouTube live streaming.
- Works in all popular 1080 HD and 720p HD formats up to 1080p59.94.
- Multi view, talkback, audio mixer and 2D DVE and media playback.

3G SDI



ATEM Television Studio Pro 4K

The world's first 12G-SDI all in one live production switcher with 8 standards converted 12G-SDI inputs, Fairlight audio, ATEM Advanced Chroma Keyer and motion media clips!

- 8 input 12G-SDI all in one live production switcher and control panel.
- Full re-sync and standards converter on every input for mixing formats.
- Designed for broadcast, professional, AV and YouTube live streaming.
- Works in all popular HD and Ultra HD formats up to 2160p59.94.
- New Fairlight audio mixer, keyers, Ultra HD multi view out, DVE and more.

ULTRA HD 12G SDI



ATEM 1 M/E Advanced Panel

Advanced hardware control panel with built in LCD and smooth professional buttons and knobs in a compact, portable design that gives you precise control over your ATEM switcher!

- Next generation hardware control panel for ATEM switchers.
- New intuitive design with built in 5" display lets you work faster than ever.
- Perfect for fast paced live production with up to 20 sources.
- Latest broadcast technology that fits in portable racks.
- Illuminated buttons, professional joystick, dynamic display screen.



ATEM 1 M/E Production Studio 4K

Advanced 1 M/E live production switcher with DVE, stingers and 6G-SDI so you can work in SD, HD and Ultra HD.

- 10 input 6G-SDI live production switcher.
- Full resynchronization on all inputs for glitch free switching.
- Create professional Ultra HD programs from live multi camera events.
- Works in all popular SD, HD and Ultra HD formats up to 2160p29.97.
- Keyers, 1 multi view output, audio mixer, DVE and more.

ULTRA HD 6G SDI



ATEM Constellation 8K

Powerful 8K live production switcher that's also a massive 4K switcher with 40 12G-SDI inputs, ATEM Advanced Chroma Keyers, DVE, talkback, multi view, Fairlight audio and more!

- 40 multi rate 12G-SDI inputs with up and cross converters on all inputs.
- 24 completely independently assignable 12G-SDI outputs.
- Designed for massive live multi camera programs and events.
- Connect 40 sources up to 2160p59.94 or 10 sources at 8K 4320p59.94.
- 8K transitions, DVE, graphics, talkback, Fairlight audio and more.

ULTRA HD 12G SDI



ATEM 2 M/E Broadcast Panel

Hardware control panel for multi layer live production with controls for up to 40 inputs, professional joystick and faders.

- Hardware control panel works with all ATEM switchers.
- Perfectly positioned broadcast controls for working on complex events.
- Ideal for large multi camera sport, theatrical and other live programs.
- 24 x LCD bitmap buttons put every control at your fingertips.
- Professional joystick and 2 T-bar faders, controls up to 40 inputs.



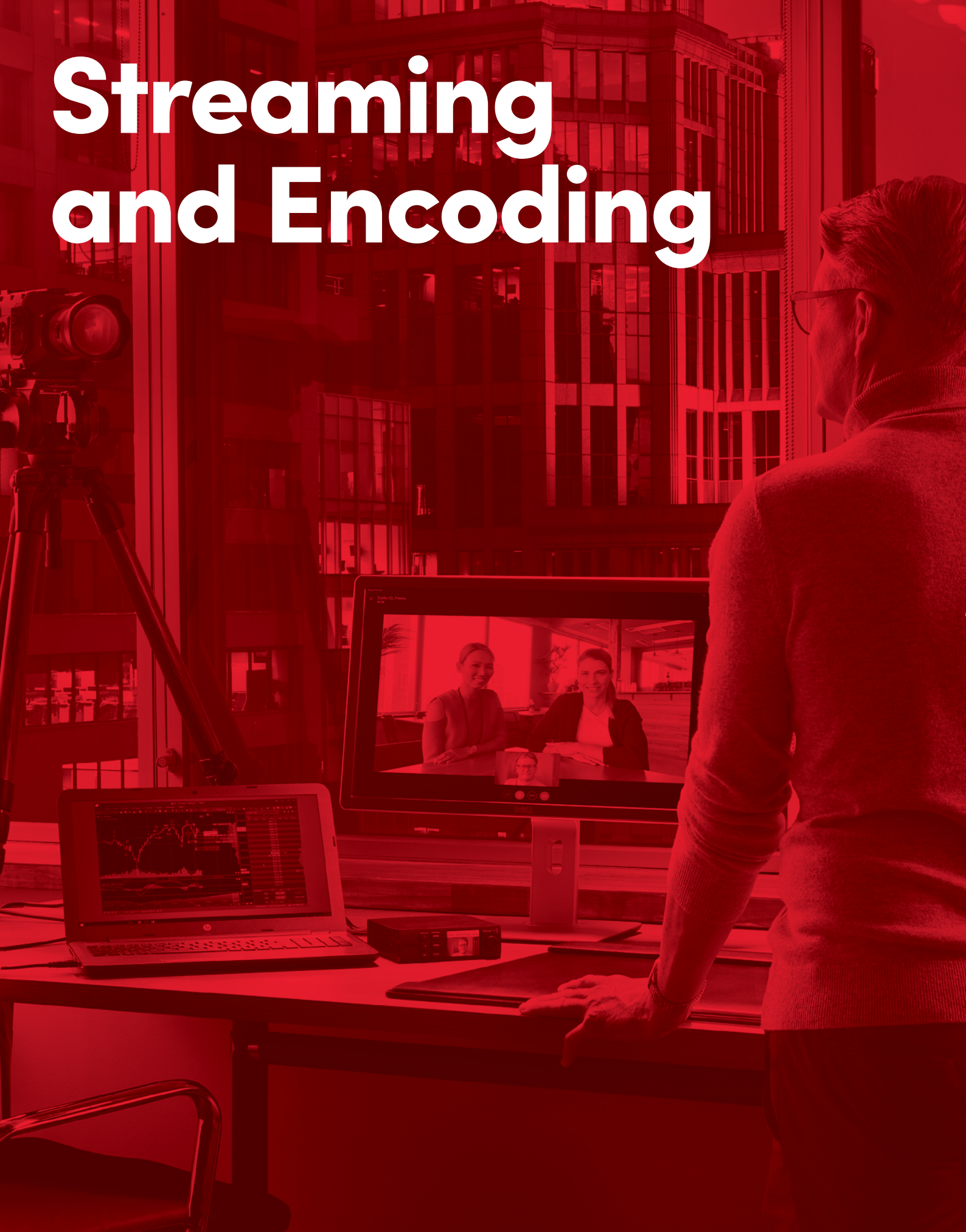
ATEM Talkback Converter 4K

Supports SDI talkback for up to 8 cameras. Includes 12G-SDI for all formats up to 2160p60, optional optical fiber, and aviation headset connections.

- Collaborate with crew on live productions.
- Connect cameras using embedded audio via channels 15 and 16.
- Talkback converter manages program and camera feeds.
- Optical fiber socket for adding an optical fiber SFP module.
- Includes push to talk buttons, aviation headset socket, built in speaker.

ULTRA HD 12G SDI

Streaming and Encoding



Shown with Teranex Mini Smart Panel.

Blackmagic Web Presenter

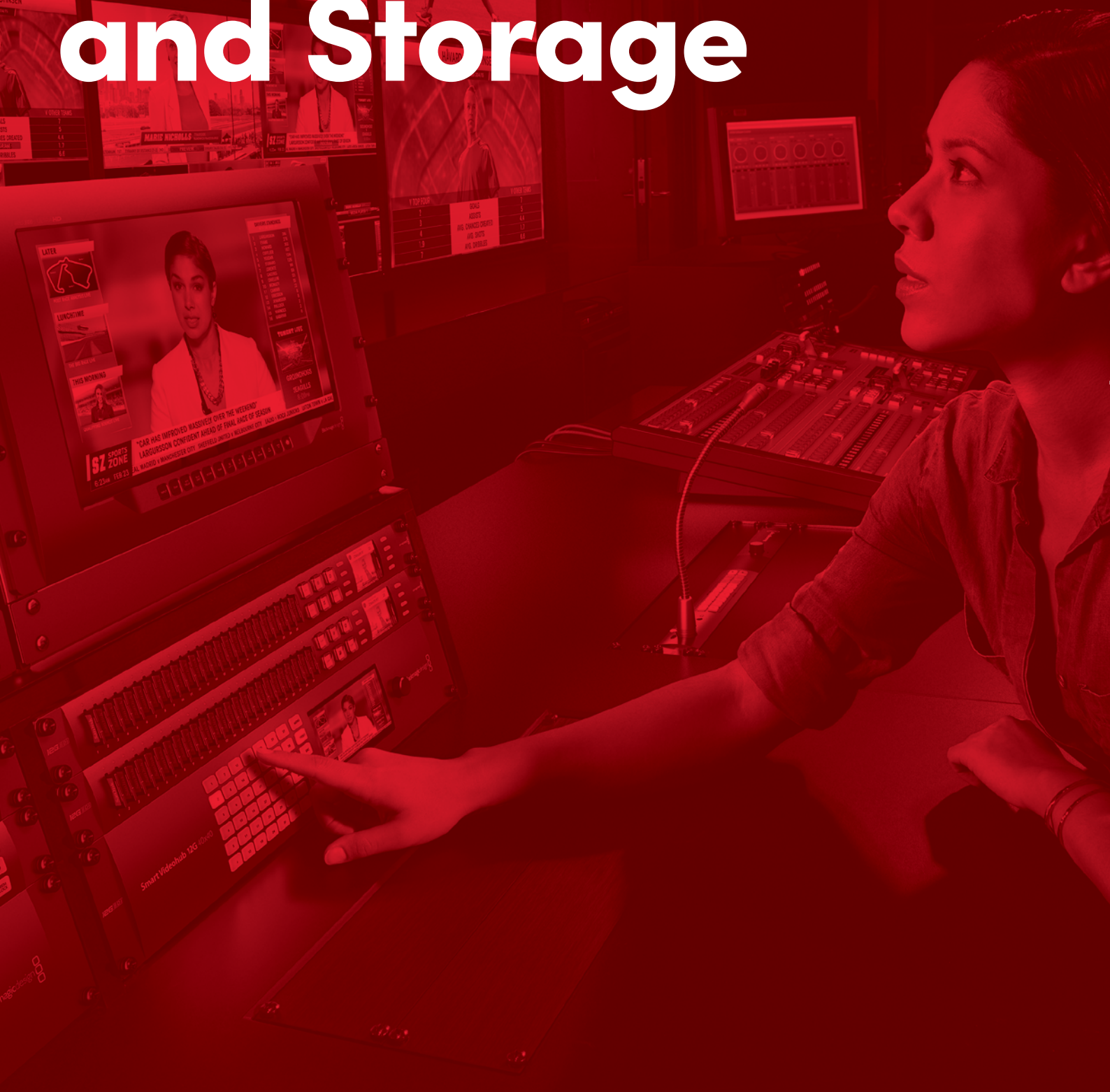
Make any SDI and HDMI video source look like a 720p USB webcam for high quality streaming to YouTube, Facebook, Skype and more!

- Use 12G-SDI and 4K HDMI sources for live web streaming.
- Works with SD, HD and UltraHD sources up to 2160p60.
- Built in Teranex processing converts video into 720p HD.
- Connects via USB and looks like a webcam to your computer.
- XLR mic input for lapel or desktop microphones.



ULTRAHD 12GSDI

Disk Recorders, Duplication and Storage



Shown with HyperDeck Extreme Control.

HyperDeck Extreme 8K HDR

The world's first 8K broadcast deck with advanced H.265 recording, touch screen interface, traditional deck style control option and more!

- Touch screen LCD with on screen transport controls.
- Add controller with traditional controls and clutch based jog knob.
- Perfect for broadcasters and post facilities, plus can control older decks.
- Record to CFast, SSD with MultiDock 10G, or external USB-C flash disks.
- Quad link 12G-SDI, HDMI and SDI monitoring out, pro audio, RS-422.

8K 4X12GSDI



HyperDeck Studio Mini

Miniaturized broadcast deck with dual UHS-II SD card recorders for non-stop recording in all formats up to 2160p30!

- Miniaturized 6G-SDI deck for all formats up to 2160p30.
- Dual SD/UHS-II card slots for non-stop recording.
- Built in LCD, VTR style controls and HDMI monitor out.
- Records broadcast quality 10-bit ProRes and HD H.264.
- ProRes 4:4:4 fill and key playback in HD.

ULTRAHD 6GSDI



8K

*Shown with HyperDeck Extreme Control.

HyperDeck Extreme 8K HDR

The world's first 8K broadcast deck with advanced H.265 recording, touch screen interface, traditional deck style control option and more!

- Touch screen LCD with on screen transport controls.
- Add controller with traditional controls and clutch based jog knob.
- Perfect for broadcasters and post facilities, plus can control older decks.
- Record to CFast, SSD with MultiDock 10G, or external USB-C flash disks.
- Quad link 12G-SDI, HDMI and SDI monitoring out, pro audio, RS-422.

4X 12GSDI



HyperDeck Studio

Professional SSD recorder with 3G-SDI, HDMI and dual recorders for recording all SD and HD formats up to 1080i60!

- Digital broadcast deck with HDMI and 3G-SDI.
- Familiar VTR style controls for fast and easy use.
- Works with SD and HD up to 1080p30.
- Dual SSD media slots allows hot swapping of full disks.
- 10-bit broadcast quality ProRes 422 HQ or DNxHD video.

3GSDI



HyperDeck Studio 12G

High performance dual SSD recorder with 12G-SDI and HDMI 2.0 for recording all SD, HD and Ultra HD formats up to 2160p60.

- Real time Ultra HD 12G-SDI broadcast deck using SSDs.
- Familiar VTR style controls for fast and easy operation.
- Works with any SD, HD and Ultra HD up to 2160p60.
- Dual SSD media slots allows hot swapping of full disks.
- 10-bit broadcast quality ProRes 422 HQ or DNxHD video.

ULTRAHD 12GSDI

Now with Long Form Recording!



Blackmagic Duplicator 4K

Simultaneously duplicate content on 25 SD cards at once or create long form non-stop recordings that last for weeks at a time!

- Encodes and records Ultra HD using H.264 and H.265 formats.
- Lets you record and deliver programming instantly.
- Also ideal for long form recording such as security or broadcast archival.
- Records simultaneously to 25 separate SD cards.
- 12G-SDI for working in all formats up to 2160p60.

ULTRAHD 12GSDI



Blackmagic MultiDock 10G

Next generation USB-C dock for mounting up to four SSDs for use on a computer or with HyperDeck Extreme 8K HDR.

- 2 fast USB-C generation 2 10 Gb/s connections.
- Four docking bay solution for high performance SSD media disks.
- Can be used with HyperDeck Extreme 8K HDR for adding SSD compatibility.
- Each slot supports 2.5" SATA 3 disks at 6 Gb/s.
- Can be configured for multi disk RAID storage.



HyperDeck Studio Pro

Advanced SSD recorder with both 6G-SDI and analog connections for recording all formats up to 2160p30.

- Digital broadcast deck with analog and digital connections.
- 6G-SDI, HDMI, analog component, composite, S-Video and more.
- Familiar VTR style controls for fast and easy use.
- Works with SD, HD and Ultra HD up to 2160p30.
- 10-bit broadcast quality ProRes 422 HQ or DNxHD video.

ULTRAHD 6GSDI



Ultimatte 12

Ultimatte 12



Ultimatte Smart Remote 4

Control up to 8 different Ultimatte 12 units at the same time with easy to use touchscreen menus and settings, and direct buttons.

- Remote control touchscreen interface for controlling Ultimatte 12.
- Chain together and control up to 8 different Ultimatte units.
- Ideal to control Ultimattes on every camera in live multi camera production.
- Portable design is great on the desktop or can be rack mounted.
- Buttons for quickly working with presets and a touch screen for complete control.



Ultimatte 12

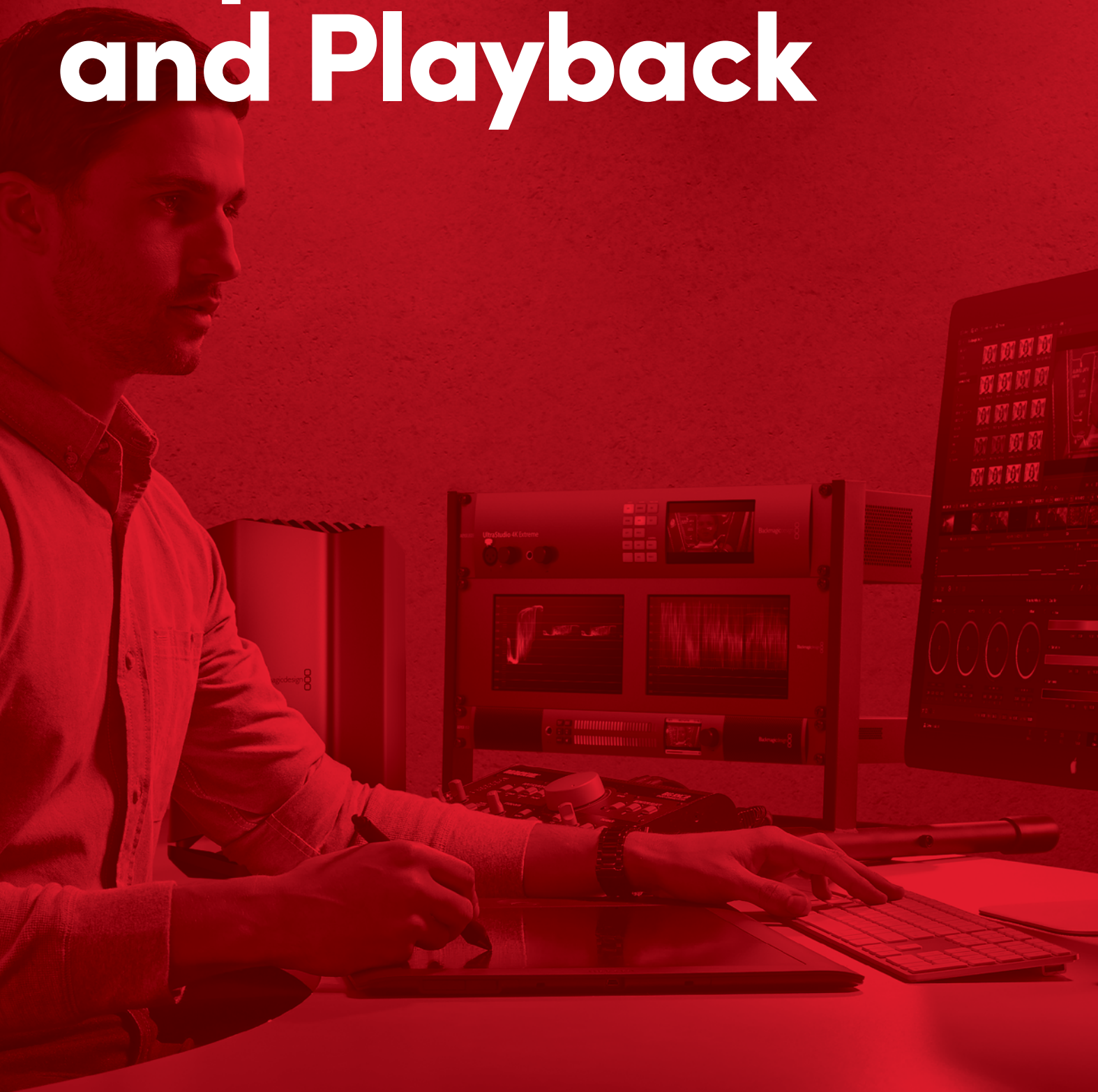
The world's most trusted keyer now features 12G-SDI and a real time compositing processor designed for Ultra HD and the next generation of broadcast graphics!

- Real time compositing, incredible color fidelity, edge detection and more.
- New 12G-SDI for working in 4K along with one touch fast keying.
- Perfect for live broadcast, television and film production.
- New realistic layer mode, algorithms and expanded color space.
- Key backgrounds, add graphics, shadows, lighting, and more.

ULTRA HD 12G SDI



Capture and Playback



UltraStudio 4K Mini

Portable capture and playback solution for Thunderbolt 3 computers with 12G-SDI, HDMI, analog video and audio connections!

- Thunderbolt 3 interface for 40 Gb/s capture and playback.
- Front panel with LCD, mic input, headphone and SD card slot.
- Ideal for edit monitoring, live graphics, archive and streaming.
- Compatible with DaVinci Resolve for editing, color, VFX and audio.
- Supports all SD, 720p, 1080i, 1080p, 2160p and 4K DCI formats.





UltraStudio Mini

UltraStudio Mini models are ideal when space is tight and you require only capture or playback. UltraStudio Mini Recorder features 1.5G-SDI and HDMI input and UltraStudio Mini Monitor features 1.5G-SDI and HDMI outputs.



UltraStudio HD Mini

Portable Thunderbolt 3 capture/playback with 3G-SDI, HDMI and analog connections.

- Portable Thunderbolt 3 powered capture and playback.
- Broadcast quality 10 bit formats up to 1080p60 and 2K DCI.
- Perfect for capture and playback of high definition video in the field.
- Incredible 40 Gb/s allows 4:4:4 fill and key playback.
- Analog YUV and NTSC/PAL inputs for archiving capture.



UltraStudio 4K Mini

Portable capture and playback solution for Thunderbolt 3 computers with 12G-SDI, HDMI, analog video and audio connections!

- Thunderbolt 3 interface for 40 Gb/s capture and playback.
- Front panel with LCD, mic input, headphone and SD card slot.
- Ideal for edit monitoring, live graphics, archive and streaming.
- Compatible with DaVinci Resolve for editing, color, VFX and audio.
- Supports all SD, 720p, 1080i, 1080p, 2160p and 4K DCI formats.

ULTRAHD 12GSDI



UltraStudio 4K Extreme 3

Advanced capture and playback featuring 40Gb/s Thunderbolt 3, 12G-SDI, HDMI 2.0 and virtually all other video connections.

- Rack mount Thunderbolt 3 based capture and playback.
- Advanced 12G-SDI, HDMI, analog connections and more.
- Perfect for professional editors and colorists.
- Works in all SD, HD and Ultra HD formats up to 2160p60.
- 4:2:2 and 4:4:4 quality plus dual stream 3D capture and playback.

ULTRAHD 12GSDI





DeckLink Mini Recorder

Low profile 1 lane PCIe card with HD-SDI and HDMI for single channel capture in all formats up to 1080p30.

- Record uncompressed 10-bit video direct from SDI or HDMI.
- Switches between SD and HD video formats instantly.
- Perfect for building ingest servers and streaming solutions.
- Includes two PCI shields for full height or low profile slots.
- Works with software on Mac, Windows and Linux platforms.

1.5G SDI



DeckLink Mini Monitor

Low profile 1 lane PCIe card with HD-SDI and HDMI for single channel playback in all formats up to 1080p30.

- Mini playback card for uncompressed 10-bit SD and HD.
- Perfect for monitoring output to SDI or HDMI displays.
- Perfect to monitor from editing software while you edit.
- Includes two PCI shields for full height or low profile slots.
- Works with software on Mac, Windows and Linux platforms.

1.5G SDI



DeckLink Mini Recorder 4K

Low profile 4 lane PCIe card with 6G-SDI and HDMI for single channel capture in all formats up to 2160p30, including HDR.

- Mini capture card for all formats up to Ultra HD 2160p30.
- Features 6G-SDI and HDMI 2.0a input connections.
- High dynamic range recording and metadata.
- Perfect for building ingest servers and streaming solutions.
- Includes two PCI shields for full height or low profile slots.

ULTRA HD 6G SDI



DeckLink Mini Monitor 4K

Low profile 4 lane PCIe card with 6G-SDI and HDMI for single channel playback in all formats up to 2160p30, including HDR.

- Playback card for uncompressed 10-bit SD, HD and Ultra HD.
- Perfect for monitoring direct to SDI or HDMI displays.
- Monitor from editing software while you edit.
- Supports high dynamic range images and metadata.
- Includes two PCI shields for full height or low profile slots.

ULTRA HD 6G SDI

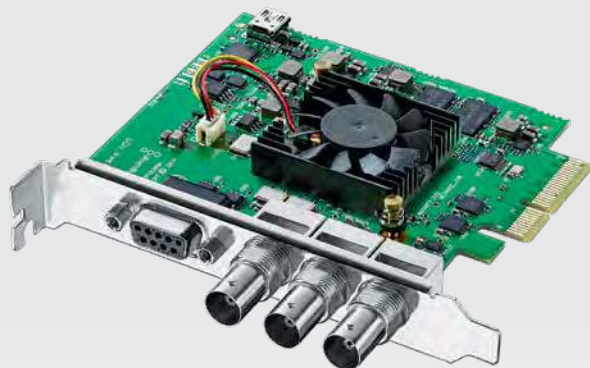


Intensity Pro 4K

Broadcast quality PCIe capture and playback in SD, HD and Ultra HD for HDMI, YUV, S-Video and NTSC/PAL devices!

- PCI Express capture and playback card.
- SD, HD up to 1080p60 and Ultra HD up to 2160p30.
- Perfect for editors on Mac, Windows or Linux.
- HDMI, component, composite and S-Video.
- Compatible with all popular video editing software.

ULTRA HD



DeckLink SDI 4K

4 lane PCIe card with 6G-SDI for single channel capture and playback in SD, HD and Ultra HD up to 4K DCI 25p.

- The world's most affordable 6G-SDI capture and playback card!
- 6G-SDI for SD, HD, Ultra HD to 30fps and DCI 4K to 25fps.
- Ideal for editing, paint, broadcast design and much more.
- Multi rate connections work in all video formats.
- RS-422 deck control, internal keying and reference input.

ULTRA HD 6G SDI



DeckLink Duo 2

4 lane PCIe card with 4 independent 3G-SDI connections for four channels of capture or playback in all formats up to 1080p60.

- Multi channel capture or playback with 4 channels!
- Features 4 independent 3G-SDI connections.
- Supports SDI formats in SD and HD up to 1080p60.
- Can playback or capture from any combination of connections.

3G SDI



DeckLink Duo 2 Mini

Low profile PCIe capture and playback card with 4 independent channels for SD and HD up to 1080p60.

- Multi channel capture or playback with 4 channels!
- Features 4 independent mini 3G-SDI connections.
- Supports SDI formats in SD and HD up to 1080p60.
- Can playback or capture from any combination of connections.

3G SDI





DeckLink Quad HDMI Recorder

PCIe capture card with 4 HDMI inputs for capturing up to 4 different SD, HD, Ultra HD and 4K formats at the same time!

- 4 independent HDMI 2.0b video inputs
- High performance PCI Express 8 lane generation 3 card.
- Ideal for streaming solutions, broadcast servers, software production switchers.
- Supports all SD, HD, Ultra HD, 4K DCI and DVI formats up to 60p.
- Capture from computer and gaming console up to 2560 x 1600 at 60p.

ULTRAHD



DeckLink Studio 4K

4 lane PCIe card with 6G-SDI, HDMI and analog component/composite for single channel capture and playback up to 4K DCI 25p.

- Capture and playback card for all formats up to 4K DCI 25p.
- Massive number of analog and digital connections.
- Perfect for editors and designers using analog equipment.
- 6G-SDI, component, composite and S-Video, Black Burst and Tri-Sync.
- 4 ch balanced analog and 2 ch AES/EBU switchable to 6 ch out.

ULTRAHD 6GSDI



DeckLink 4K Extreme 12G

8 lane PCIe card with 12G-SDI, HDMI and analog component/composite for single channel capture and playback up to UltraHD 60p and 4K DCI 25p.

- Most advanced 4K card for video or digital cinema DCI 4K.
- Dual link 12G-SDI works with all formats up to 4K DCI.
- Stereoscopic 3D 4:4:4 RGB output is perfect for film production.
- Capture 10-bit YUV or full color bandwidth 12-bit RGB.
- Includes AES/EBU audio, up, down and cross conversion.

ULTRAHD 12GSDI



DeckLink 4K Extreme 12G - Quad SDI

Optional mezzanine board for adding quad link SDI input and output to DeckLink 4K Extreme 12G.

- Allows you to connect quad link cameras, decks and displays.
- Works with all equipment and formats up to 4K DCI.
- Perfect for viewing feature film, and commercial work on 4K projectors.
- Use in conjunction with built in AES/EBU audio, up/down/cross conversions, and analog breakout connector.

ULTRAHD 12GSDI



DeckLink 8K Pro

High resolution 8K capture and playback card that also features multi channel support in all formats up to Ultra HD and 4K.

- Most advanced 8K capture and playback card.
- Quad Link 12G SDI works in SD, HD, Ultra HD, 2K, 4K and 8K DCI.
- Perfect for high end broadcast and digital cinema workflows.
- Multi channel capture and playback of up to 4 streams in any format up to 4K DCI 60p.
- Advanced 8 lane PCI Express, 10-bit YUV, 12-bit RGB, Rec. 2020.

ULTRAHD 4X12GSDI



DeckLink Quad 2

8 lane PCIe card with 8 independent 3G-SDI connections for eight channels of capture or playback in all formats up to 1080p60.

- Multi channel SDI capture and playback card.
- 8 fully independent bi-directional HD/SD-SDI connections.
- Perfect for developers needing to build custom I/O solutions.
- Can be used in any combination of 8 capture or 8 playback channels.
- Instantly switches between capture and playback.

3GSDI

Standards Conversion



Mini Converter UpDownCross HD

Compact 3G-SDI and HDMI converter for converting any SD or HD video format to any other SD or HD format!

- Full standards and cross converter for SD and HD.
- Any SD or HD video format to any other SD or HD format.
- Both SDI and HDMI inputs and outputs.
- Uses high quality Teranex algorithms.
- Supports all formats up to 1080p60.



Teranex Express

The ultimate 12G-SDI up, down, cross and standards converter with 1089 conversions so you can convert any format to any format!

- Realtime broadcast standards converter.
- Supports 1,089 different standard and format conversions.
- Use to convert any signal, format and frame rate to any other.
- 12G-SDI for all SD, HD and Ultra HD formats up to 2160p60.
- Converts time code and ancillary data with the video.

ULTRA HD 12G SDI

Teranex AV

Designed for AV professionals, Teranex AV has 12G-SDI, HDMI 2.0a, XLR and HiFi, low latency, a still store and 1089 conversions!

- World's first standards converter designed for professional AV.
- 12G-SDI, HDMI 2.0a, XLR and HiFi connections.
- Supports 1,089 different standard and format conversions.
- Converts time code and ancillary data with the video.
- Built in still store for adding logos and graphics.

ULTRA HD 12G SDI



Video and Audio Converters



Micro Converter BiDirectional SDI/HDMI

Bidirectional SDI to HDMI and HDMI to SDI converter supports independent SD or HD formats in either direction at the same time!

- Automatically detects all SD and HD formats!
- 3G-SDI works in all formats up to 1080p60.
- Convert in both directions independently.
- Powers from any USB source.
- Auto detects SD or HD, optional AC power supply.

Get 2
converters
for the price
of one!



3G SDI

Micro Converter HDMI to SDI

The world's smallest HDMI to 3G-SDI broadcast quality converter with USB power.

SDI Rates: 270Mb, 1.5G, 3G.
SD Video Standards: 525i59.94 NTSC, 625i50 PAL.
HD Video Standards: 720p50, 720p59.94, 720p60, 1080p23.98, 1080p24, 1080p25, 1080p29.97, 1080p30, 1080p50, 1080p59.94, 1080p60, 1080PsF25, 1080PsF29.97, 1080PsF30, 1080i50, 1080i59.94, 1080i60.
Ultra HD Video Standards: None.
4K Video Standards: None.
Features: 2x SDI out, USB or optional AC power supply, Level A and B support.



3G SDI

Micro Converter SDI to HDMI

The world's smallest 3G-SDI to HDMI broadcast quality converter with USB power.

SDI Rates: 270Mb, 1.5G, 3G.
SD Video Standards: 525i59.94 NTSC, 625i50 PAL.
HD Video Standards: 720p50, 720p59.94, 720p60, 1080p23.98, 1080p24, 1080p25, 1080p29.97, 1080p30, 1080p50, 1080p59.94, 1080p60, 1080PsF25, 1080PsF29.97, 1080PsF30, 1080i50, 1080i59.94, 1080i60.
Ultra HD Video Standards: None.
4K Video Standards: None.
Features: SDI loop through, USB or optional AC power supply.



3G SDI

Micro Converter HDMI to SDI wPSU

The world's smallest HDMI to 3G-SDI broadcast quality converter with power supply included!

SDI Rates: 270Mb, 1.5G, 3G.
SD Video Standards: 525i59.94 NTSC, 625i50 PAL.
HD Video Standards: 720p50, 720p59.94, 720p60, 1080p23.98, 1080p24, 1080p25, 1080p29.97, 1080p30, 1080p50, 1080p59.94, 1080p60, 1080PsF25, 1080PsF29.97, 1080PsF30, 1080i50, 1080i59.94, 1080i60.
Ultra HD Video Standards: None.
4K Video Standards: None.
Features: Powered via USB and includes AC power supply.



3G SDI

Micro Converter SDI to HDMI wPSU

The world's smallest 3G-SDI to HDMI broadcast quality converter with power supply included!

SDI Rates: 270Mb, 1.5G, 3G.
SD Video Standards: 525i59.94 NTSC, 625i50 PAL.
HD Video Standards: 720p50, 720p59.94, 720p60, 1080p23.98, 1080p24, 1080p25, 1080p29.97, 1080p30, 1080p50, 1080p59.94, 1080p60, 1080PsF25, 1080PsF29.97, 1080PsF30, 1080i50, 1080i59.94, 1080i60.
Ultra HD Video Standards: None.
4K Video Standards: None.
Features: Powered via USB and includes AC power supply.



6G SDI

Mini Converter HDMI to SDI 6G

Convert HDMI with HDMI analog or AES/EBU audio to SD, HD or Ultra HD SDI.

SDI Rates: 270Mb, 1.5G, 3G, 6G.
SD Video Standards: 525i59.94 NTSC, 625i50 PAL.
HD Video Standards: 720p50, 720p59.94, 720p60, 1080p23.98, 1080p24, 1080p25, 1080p29.97, 1080p30, 1080p50, 1080p59.94, 1080p60, 1080i50, 1080i59.94, 1080i60.
Ultra HD Video Standards: 2160p23.98, 2160p24, 2160p25, 2160p29.97, 2160p30.
4K Video Standards: 4K DCI 23.98p, 4K DCI 24p, 4K DCI 25p.
Features: 2x SDI out, user selectable Level A or B.



12G SDI

Mini Converter Optical Fiber 12G

Extend SDI connections over extremely long distances by converting to optical fiber!

SDI Rates: 270Mb, 1.5G, 3G, 6G, 12G.
SD Video Standards: 525i59.94 NTSC, 625i50 PAL.
HD Video Standards: 720p50, 720p59.94, 720p60, 1080p23.98, 1080p24, 1080p25, 1080p29.97, 1080p30, 1080p50, 1080p59.94, 1080p60, 1080PsF23.98, 1080PsF24, 1080PsF25, 1080PsF29.97, 1080PsF30, 1080i50, 1080i59.94, 1080i60.
Ultra HD Video Standards: 2160p23.98, 2160p24, 2160p25, 2160p29.97, 2160p30.
4K Video Standards: 4K DCI 23.98p, 4K DCI 24p, 4K DCI 25p.
Features: Requires optional SMPTE SFP optical module.



6G SDI

Mini Converter SDI to HDMI 6G

Convert SD, HD or Ultra HD SDI to HDMI and analog or AES/EBU audio with HDMI Instant Lock and 3D LUTs!

SDI Rates: 270Mb, 1.5G, 3G, 6G.
SD Video Standards: 525i59.94 NTSC, 625i50 PAL.
HD Video Standards: 720p50, 720p59.94, 720p60, 1080p23.98, 1080p24, 1080p25, 1080p29.97, 1080p30, 1080p50, 1080p59.94, 1080p60, 1080PsF23.98, 1080PsF24, 1080PsF25, 1080PsF29.97, 1080PsF30, 1080i50, 1080i59.94, 1080i60.
Ultra HD Video Standards: 2160p23.98, 2160p24, 2160p25, 2160p29.97, 2160p30.
4K Video Standards: 4K DCI 23.98p, 4K DCI 24p, 4K DCI 25p.
Features: Down converts Ultra HD on HD display, auto detects Level A/B.



3G SDI

Mini Converter SDI Distribution

Distribute a single 3G-SDI input to 8 re-clocked 3G-SDI outputs.

SDI Rates: 270Mb, 1.5G, 3G.
SD Video Standards: 525i59.94 NTSC, 625i50 PAL.
HD Video Standards: 720p50, 720p59.94, 720p60, 1080p23.98, 1080p24, 1080p25, 1080p29.97, 1080p30, 1080p50, 1080p59.94, 1080p60, 1080PsF23.98, 1080PsF24, 1080PsF25, 1080PsF29.97, 1080PsF30, 1080i50, 1080i59.94, 1080i60.
Ultra HD Video Standards: None.
4K Video Standards: None.
Features: Auto detects SD or HD.



Mini Converter SDI to Analog

Convert from 3G-SDI to NTSC, PAL, S-video or component video and audio.

SDI Rates: 270Mb, 1.5G.
SD Video Standards: 525i59.94 NTSC, 625i50 PAL.
HD Video Standards: 720p50, 720p59.94, 720p60, 1080p23.98, 1080p24, 1080p25, 1080p29.97, 1080p30, 1080PsF23.98, 1080PsF24, 1080PsF25, 1080PsF29.97, 1080PsF30, 1080i50, 1080i59.94, 1080i60.
Ultra HD Video Standards: None.
4K Video Standards: None.
Features: HD to SD down converter. De-embeds to analog or AES/EBU audio.



Mini Converter Analog to SDI

Convert NTSC, PAL, S-video or component video to SDI with embedded audio.

SDI Rates: 270Mb, 1.5G.
SD Video Standards: 525i59.94 NTSC, 625i50 PAL.
HD Video Standards: 720p50, 720p59.94, 720p60, 1080i50, 1080i59.94, 1080i60.
Ultra HD Video Standards: None.
4K Video Standards: None.
Features: Auto detects SD or HD. Embeds audio from analog or AES/EBU.



Mini Converter Sync Generator

Generate sync via six crystal stabilized Blackburst and Tri-sync video reference outputs.

SDI Rates: 270Mb, 1.5G.
SD Video Standards: 525i59.94 NTSC, 625i50 PAL.
HD Video Standards: 720p50, 720p59.94, 720p60, 1080p23.98, 1080p24, 1080p25, 1080p29.97, 1080p30, 1080PsF23.98, 1080PsF24, 1080i50, 1080i59.94, 1080i60.
Ultra HD Video Standards: Ultra HD equipment can lock to HD tri-sync sources.
4K Video Standards: 4K equipment can lock to HD tri-sync sources.
Features: Sync output settings can be changed via witches.



Mini Converter SDI Distribution 4K

Distribute a single 6G-SDI input to 8 re-clocked 6G-SDI outputs.

SDI Rates: 270Mb, 1.5G, 3G, 6G.
SD Video Standards: 525i59.94 NTSC, 625i50 PAL.
HD Video Standards: 720p50, 720p59.94, 720p60, 1080p23.98, 1080p24, 1080p25, 1080p29.97, 1080p30, 1080p50, 1080p59.94, 1080p60, 1080PsF23.98, 1080PsF24, 1080PsF25, 1080PsF29.97, 1080PsF30, 1080i50, 1080i59.94, 1080i60.
Ultra HD Video Standards: 2160p23.98, 2160p24, 2160p25, 2160p29.97, 2160p30.
4K Video Standards: 4K DCI 23.98p, 4K DCI 24p, 4K DCI 25p.
Features: Full SDI re-clocking. ASI, ancillary and embedded audio supported.



Mini Converter SDI to Audio

De-embed 3G-SDI audio to 4 channels of balanced analog audio or 8 channels of AES/EBU.

SDI Rates: 270Mb, 1.5G, 3G.
SD Video Standards: 525i59.94 NTSC, 625i50 PAL.
HD Video Standards: 720p50, 720p59.94, 720p60, 1080p23.98, 1080p24, 1080p25, 1080p29.97, 1080p30, 1080p50, 1080p59.94, 1080p60, 1080PsF23.98, 1080PsF24, 1080PsF25, 1080PsF29.97, 1080PsF30, 1080i50, 1080i59.94, 1080i60.
Ultra HD Video Standards: None.
4K Video Standards: None.
Features: Allows selection of 16 SDI channels out using switches.



Mini Converter Audio to SDI

Embed 3G-SDI audio from 4 channels of analog audio or 8 channels of AES/EBU.

SDI Rates: 270Mb, 1.5G, 3G.
SD Video Standards: 525i59.94 NTSC, 625i50 PAL.
HD Video Standards: 720p50, 720p59.94, 720p60, 1080p23.98, 1080p24, 1080p25, 1080p29.97, 1080p30, 1080p50, 1080p59.94, 1080p60, 1080PsF23.98, 1080PsF24, 1080PsF25, 1080PsF29.97, 1080PsF30, 1080i50, 1080i59.94, 1080i60.
Ultra HD Video Standards: None.
4K Video Standards: None.
Features: Allows embedding into 16 SDI channels using switches.



Mini Converter SDI to Audio 4K

De-embed 6G-SDI audio to 4 channels of balanced analog audio or 8 channels of AES/EBU.

SDI Rates: 270Mb, 1.5G, 3G, 6G.
SD Video Standards: 525i59.94 NTSC, 625i50 PAL.
HD Video Standards: 720p50, 720p59.94, 720p60, 1080p23.98, 1080p24, 1080p25, 1080p29.97, 1080p30, 1080p50, 1080p59.94, 1080p60, 1080PsF23.98, 1080PsF24, 1080PsF25, 1080PsF29.97, 1080PsF30, 1080i50, 1080i59.94, 1080i60.
Ultra HD Video Standards: 2160p23.98, 2160p24, 2160p25, 2160p29.97, 2160p30.
4K Video Standards: 4K DCI 23.98p, 4K DCI 24p, 4K DCI 25p.
Features: Allows selection of 16 SDI channels out using switches.



Mini Converter Audio to SDI 4K

Embed 6G-SDI audio from 4 channels of analog audio or 8 channels of AES/EBU.

SDI Rates: 270Mb, 1.5G, 3G, 6G.
SD Video Standards: 525i59.94 NTSC, 625i50 PAL.
HD Video Standards: 720p50, 720p59.94, 720p60, 1080p23.98, 1080p24, 1080p25, 1080p29.97, 1080p30, 1080p50, 1080p59.94, 1080p60, 1080PsF23.98, 1080PsF24, 1080PsF25, 1080PsF29.97, 1080PsF30, 1080i50, 1080i59.94, 1080i60.
Ultra HD Video Standards: 2160p23.98, 2160p24, 2160p25, 2160p29.97, 2160p30.
4K Video Standards: 4K DCI 23.98p, 4K DCI 24p, 4K DCI 25p.
Features: Allows embedding into 16 SDI channels using switches.



6G-SDI

Mini Converter SDI to Analog 4K

Convert from 6G-SDI to NTSC, PAL, S-video or component video and audio via down converter.

SDI Rates: 270Mb, 1.5G, 3G, 6G.
SD Video Standards: 525i59.94 NTSC, 625i50 PAL.
HD Video Standards: 720p50, 720p59.94, 720p60, 1080p23.98, 1080p24, 1080p25, 1080p29.97, 1080p30, 1080p50, 1080p59.94, 1080p60, 1080PsF23.98, 1080PsF24, 1080PsF25, 1080PsF29.97, 1080PsF30, 1080i50, 1080i59.94, 1080i60.
Ultra HD Video Standards: 2160p23.98, 2160p24, 2160p25, 2160p29.97, 2160p30.
4K Video Standards: 4K DCI 23.98p, 4K DCI 24p, 4K DCI 25p.
Features: Built in SD/HD down converter, Select AES/EBU or analog audio.



6G-SDI

Mini Converter SDI Multiplex 4K

Convert between Single Link 6G-SDI, Dual Link 3G-SDI and Quad Link HD-SDI 4K.

SDI Rates: 270Mb, 1.5G, 3G, 6G.
SD Video Standards: 525i59.94 NTSC, 625i50 PAL.
HD Video Standards: 720p50, 720p59.94, 720p60, 1080p23.98, 1080p24, 1080p25, 1080p29.97, 1080p30, 1080p50, 1080p59.94, 1080p60, 1080PsF23.98, 1080PsF24, 1080PsF25, 1080PsF29.97, 1080PsF30, 1080i50, 1080i59.94, 1080i60.
Ultra HD Video Standards: 2160p23.98, 2160p24, 2160p25, 2160p29.97, 2160p30.
4K Video Standards: 4K DCI 23.98p, 4K DCI 24p, 4K DCI 25p.
Features: Convert Quad/Dual Link to Single Link and Single Link to Quad/Dual Link, embedded audio support.



12G-SDI

Teranex Mini SDI to HDMI 12G

Convert SD, HD and Ultra HD SDI to HDMI and analog or AES/EBU audio.

SDI Rates: 270Mb, 1.5G, 3G, 6G, 12G.
SD Video Standards: 525i59.94 NTSC, 625i50 PAL.
HD Video Standards: 720p50, 720p59.94, 720p60, 1080p23.98, 1080p24, 1080p25, 1080p29.97, 1080p30, 1080p50, 1080p59.94, 1080p60, 1080PsF23.98, 1080PsF24, 1080PsF25, 1080PsF29.97, 1080PsF30, 1080i50, 1080i59.94, 1080i60.
Ultra HD Video Standards: 2160p23.98, 2160p24, 2160p25, 2160p29.97, 2160p30, 2160p50, 2160p59.94, 2160p60.
4K Video Standards: 4K DCI 23.98p, 4K DCI 24p, 4K DCI 25p.
Features: HDMI Instant Lock and 3D LUTs loaded via USB utility.



12G-SDI

Teranex Mini HDMI to SDI 12G

Convert HDMI with HDMI, analog or AES/EBU audio to SD, HD and Ultra HD SDI.

SDI Rates: 270Mb, 1.5G, 3G, 6G, 12G.
SD Video Standards: 525i59.94 NTSC, 625i50 PAL.
HD Video Standards: 720p50, 720p59.94, 720p60, 1080p23.98, 1080p24, 1080p25, 1080p29.97, 1080p30, 1080p50, 1080p59.94, 1080p60, 1080PsF23.98, 1080PsF24, 1080PsF25, 1080PsF29.97, 1080PsF30, 1080i50, 1080i59.94, 1080i60.
Ultra HD Video Standards: 2160p23.98, 2160p24, 2160p25, 2160p29.97, 2160p30, 2160p50, 2160p59.94, 2160p60.
4K Video Standards: 4K DCI 23.98p, 4K DCI 24p, 4K DCI 25p.
Features: 12G to HD down converter for monitoring Ultra HD on HD monitors.



Teranex Mini Smart Panel

Add front panel controls to your Teranex Mini so you can turn on labels, audio meters, borders, tally and adjust settings!

- Enhanced front panel controls and monitoring.
- Push button controls and built in LCD screen.



8K

Teranex Mini SDI to HDMI 8K HDR

Advanced 8K HDMI monitoring solution with scopes, 3D LUTs and monitor calibration!

HD Video Standards: 720p50/59.94/60, 1080i50/59.94/60, 1080p23.98/24/25/29.97/30/47.95/48/50/59.94/60, 1080PsF23.98/24/25/29.97/30
2K DCI Video Standards: 2Kp23.98/24/25/29.97/30/47.95/48/50/59.94/60 DCI, 2KPsF23.98/24/25/29.97/30 DCI
Ultra HD Video Standards: 2160p23.98/24/25/29.97/30/47.95/48/50/59.94/60
4K DCI Video Standards: 4Kp23.98/24/25/29.97/30/47.95/48/50/59.94/60 DCI
8K Video Standards: 4320p23.98/24/25/29.97/30/47.95/48/50/59.94/60
8K DCI Video Standards: 8Kp23.98/24/25/29.97/30/47.95/48/50/59.94/60 DCI



12G-SDI

Teranex Mini SDI to Analog 12G

Convert 12G-SDI to down converted analog component, S-video and NTSC/PAL.

SDI Rates: 270Mb, 1.5G, 3G, 6G, 12G.
SD Video Standards: 525i59.94 NTSC, 625i50 PAL.
HD Video Standards: 720p50, 720p59.94, 720p60, 1080p23.98, 1080p24, 1080p25, 1080p29.97, 1080p30, 1080p50, 1080p59.94, 1080p60, 1080PsF23.98, 1080PsF24, 1080PsF25, 1080PsF29.97, 1080PsF30, 1080i50, 1080i59.94, 1080i60.
Ultra HD Video Standards: 2160p23.98, 2160p24, 2160p25, 2160p29.97, 2160p30, 2160p50, 2160p59.94, 2160p60.
4K Video Standards: 4K DCI 23.98p, 4K DCI 24p, 4K DCI 25p.
Features: 12G to SD/HD down converter, 12G-SDI loop out, USB control.



12G-SDI

Teranex Mini Analog to SDI 12G

Convert YUV/S-Video/Composite with analog or AES/EBU audio to 12G-SDI.

SDI Rates: 270Mb, 1.5G, 3G, 6G, 12G.
SD Video Standards: 525i59.94 NTSC, 625i50 PAL.
HD Video Standards: 720p50, 720p59.94, 720p60, 1080p23.98, 1080p24, 1080p25, 1080p29.97, 1080p30, 1080p50, 1080p59.94, 1080p60, 1080PsF23.98, 1080PsF24, 1080PsF25, 1080PsF29.97, 1080PsF30, 1080i50, 1080i59.94, 1080i60.
Ultra HD Video Standards: None.
Features: HD to Ultra HD up converter, optional front panel control.





12G-SDI

Teranex Mini SDI to Audio 12G

De-embed SDI audio to balanced analog, AES/EBU, HiFi and optical audio.

SDI Rates: 270Mb, 1.5G, 3G, 6G, 12G.
SD Video Standards: 525i59.94 NTSC, 625i50 PAL.
HD Video Standards: 720p50, 720p59.94, 720p60, 1080p23.98, 1080p24, 1080p25, 1080p29.97, 1080p30, 1080p50, 1080p59.94, 1080p60, 1080PsF23.98, 1080PsF24, 1080PsF25, 1080PsF29.97, 1080PsF30, 1080i50, 1080i59.94, 1080i60.
Ultra HD Video Standards: 2160p23.98, 2160p24, 2160p25, 2160p29.97, 2160p30, 2160p50, 2160p59.94, 2160p60.
4K Video Standards: 4K DCI 23.98p, 4K DCI 24p, 4K DCI 25p.
Features: Supports optional front panel control and USB control software.



12G-SDI

Teranex Mini Audio to SDI 12G

Embed audio into 12G-SDI from balanced analog, AES/EBU, HiFi and optical audio.

SDI Rates: 270Mb, 1.5G, 3G, 6G, 12G.
SD Video Standards: 525i59.94 NTSC, 625i50 PAL.
HD Video Standards: 720p50, 720p59.94, 720p60, 1080p23.98, 1080p24, 1080p25, 1080p29.97, 1080p30, 1080p50, 1080p59.94, 1080p60, 1080PsF23.98, 1080PsF24, 1080PsF25, 1080PsF29.97, 1080PsF30, 1080i50, 1080i59.94, 1080i60.
Ultra HD Video Standards: 2160p23.98, 2160p24, 2160p25, 2160p29.97, 2160p30, 2160p50, 2160p59.94, 2160p60.
4K Video Standards: 4K DCI 23.98p, 4K DCI 24p, 4K DCI 25p.
Features: Supports optional front panel control and USB control software.



12G-SDI

Teranex Mini SDI Distribution 12G

Distribute a single 12G-SDI signal to up to 8 12G-SDI devices simultaneously.

SDI Rates: 270Mb, 1.5G, 3G, 6G, 12G.
SD Video Standards: 525i59.94 NTSC, 625i50 PAL.
HD Video Standards: 720p50, 720p59.94, 720p60, 1080p23.98, 1080p24, 1080p25, 1080p29.97, 1080p30, 1080p50, 1080p59.94, 1080p60, 1080PsF23.98, 1080PsF24, 1080PsF25, 1080PsF29.97, 1080PsF30, 1080i50, 1080i59.94, 1080i60.
Ultra HD Video Standards: 2160p23.98, 2160p24, 2160p25, 2160p29.97, 2160p30, 2160p50, 2160p59.94, 2160p60.
4K Video Standards: 4K DCI 23.98p, 4K DCI 24p, 4K DCI 25p.
Features: Auto detects SD, HD-SDI, 3G-SDI, 6G-SDI and 12G-SDI rates.



12G-SDI

Teranex Mini 12G-SDI to Quad SDI

Convert from 12G-SDI to Quad Link SDI in all formats up to 2160p60.

SDI Rates: 270Mb, 1.5G, 3G, 6G, 12G.
SD Video Standards: 525i59.94 NTSC, 625i50 PAL.
HD Video Standards: 720p50, 720p59.94, 720p60, 1080p23.98, 1080p24, 1080p25, 1080p29.97, 1080p30, 1080p50, 1080p59.94, 1080p60, 1080PsF23.98, 1080PsF24, 1080PsF25, 1080i50, 1080i59.94, 1080i60.
Ultra HD Video Standards: 2160p23.98, 2160p24, 2160p25, 2160p29.97, 2160p30, 2160p50, 2160p59.94, 2160p60.
4K Video Standards: 4K DCI 23.98p, 4K DCI 24p, 4K DCI 25p.
Features: Use old quad link and dual link equipment with 12G-SDI, separates Ultra HD to 4 HD signals.



12G-SDI

Teranex Mini Optical to HDMI 12G

Convert from Optical Fiber SDI to HDMI in all SD, HD and Ultra HD formats up to 2160p60.

SDI Rates: 270Mb, 1.5G, 3G, 6G, 12G.
SD Video Standards: 525i59.94 NTSC, 625i50 PAL.
HD Video Standards: 720p50, 720p59.94, 720p60, 1080p23.98, 1080p24, 1080p25, 1080p29.97, 1080p30, 1080p50, 1080p59.94, 1080p60, 1080PsF23.98, 1080PsF24, 1080i50, 1080i59.94, 1080i60.
Ultra HD Video Standards: 2160p23.98, 2160p24, 2160p25, 2160p29.97, 2160p30, 2160p50, 2160p59.94, 2160p60.
4K Video Standards: 4K DCI 23.98p, 4K DCI 24p, 4K DCI 25p.
Features: Down converter. Optional front panel control and USB control.



12G-SDI

Teranex Mini HDMI to Optical 12G

Convert from HDMI to optical fiber SDI in all SD, HD and Ultra HD formats up to 2160p60.

SDI Rates: 270Mb, 1.5G, 3G, 6G, 12G.
SD Video Standards: 525i59.94 NTSC, 625i50 PAL.
HD Video Standards: 720p50, 720p59.94, 720p60, 1080p23.98, 1080p24, 1080p25, 1080p29.97, 1080p30, 1080p50, 1080p59.94, 1080p60, 1080PsF23.98, 1080PsF24, 1080i50, 1080i59.94, 1080i60.
Ultra HD Video Standards: 2160p23.98, 2160p24, 2160p25, 2160p29.97, 2160p30, 2160p50, 2160p59.94, 2160p60.
4K Video Standards: 4K DCI 23.98p, 4K DCI 24p, 4K DCI 25p.
Features: Supports optional front panel control and USB control software.



12G-SDI

Teranex Mini Quad SDI to 12G-SDI

Convert from Quad Link SDI to 12G-SDI in all formats up to 2160p60.

SDI Rates: 270Mb, 1.5G, 3G, 6G, 12G.
SD Video Standards: 525i59.94 NTSC, 625i50 PAL.
HD Video Standards: 720p50, 720p59.94, 720p60, 1080p23.98, 1080p24, 1080p25, 1080p29.97, 1080p30, 1080p50, 1080p59.94, 1080p60, 1080PsF23.98, 1080PsF24, 1080PsF25, 1080i50, 1080i59.94, 1080i60.
Ultra HD Video Standards: 2160p23.98, 2160p24, 2160p25, 2160p29.97, 2160p30, 2160p50, 2160p59.94, 2160p60.
4K Video Standards: 4K DCI 23.98p, 4K DCI 24p, 4K DCI 25p.
Features: Use old quad link and dual link equipment with 12G-SDI, Level A and B support.



12G-SDI

Teranex Mini IP Video 12G

Send or receive HD video over standard copper Ethernet or Ultra HD over 10G optical Ethernet!

SDI Rates: 270Mb, 1.5G, 3G, 6G, 12G.
SD Video Standards: 525i59.94 NTSC, 625i50 PAL.
HD Video Standards: 720p50, 720p59.94, 720p60, 1080p23.98, 1080p24, 1080p25, 1080p29.97, 1080p30, 1080p50, 1080p59.94, 1080p60, 1080PsF23.98, 1080PsF24, 1080i50, 1080i59.94, 1080i60.
Ultra HD Video Standards: 2160p23.98, 2160p24, 2160p25, 2160p29.97, 2160p30, 2160p50, 2160p59.94, 2160p60.
4K Video Standards: 4K DCI 23.98p, 4K DCI 24p, 4K DCI 25p.
Features: Realtime TICO encoding and decoding, Videohub software routing control included.



Video and Audio Monitoring



Blackmagic Video Assist 4K

Add a professional 7" monitor, scopes, XLR inputs and broadcast quality HD and Ultra HD recorders to any DSLR or SDI camera.

- Professional 7" monitor and Ultra HD recorder.
- Large 7" touchscreen monitor with overlays.
- Ideal for use with SDI and HDMI field cameras.
- Record 10-bit 4:2:2 ProRes or DNxHD.
- Built in SD card and high speed UHS-II recorders.



ULTRAHD 6G SDI



Blackmagic Video Assist

Add a professional 5" monitor and broadcast quality HD recorder with ProRes or DNx to any DSLR or SDI camera.

- Professional 5" monitor and recorder for SDI and HDMI cameras.
- Large 5" touchscreen monitor with overlays.
- Perfect as a field monitor and backup recorder.
- Record 10-bit 4:2:2 ProRes or DNxHD onto SD cards.
- Histogram, focus peaking, focus assist, on screen status.

3G SDI



SmartView 4K

Full resolution 3840 x 2160 Ultra HD broadcast monitor with 12G-SDI for SD, HD and Ultra HD monitoring up to 2160p60!

- Full resolution 3840 x 2160 Ultra HD monitor.
- 12G-SDI for working in all formats up to 2160p60.
- Ideal in road kits, on trucks or in equipment racks.
- Includes H/V delay, blue only, zoom, focus peaking and more.
- Built in 3D LUT support for monitoring.

ULTRA HD 12G SDI



SmartView Duo

Dual 8" 3 RU monitors with 3G-SDI and central software control for monitoring from different SD and HD sources!

- Dual high quality 3G-SDI monitoring.
- Two large 8" LCD screens for SD and HD.
- Compact rack mount 3 RU design

3G SDI



SmartScope Duo 4K

Dual 8" 3 RU monitors with 6G-SDI and built in scopes for technical waveform monitoring and signal evaluation!

- Waveform monitor with dual independent screens.
- Measure all aspects of a broadcast video.
- Works in SD, HD or Ultra HD.

ULTRA HD 6G SDI



Blackmagic MultiView 4 HD

Monitor up to four different SD and HD sources on the same display at the same time!

- Simultaneously monitor multiple sources on a single display.
- Mix and match up to four SD and HD sources.
- Full frame re-synchronization on each input.
- Works with all equipment and formats up to 1080p60.

3G SDI



*Shown with optional Teranex Mini Smart Panel.

Blackmagic MultiView 4

Monitor any combination of SD, HD and Ultra HD sources all on the same display, at the same time!

- Simultaneously monitor multiple sources on a single display.
- Four 6G-SDI inputs with full re-synchronization.
- Perfect for anyone that needs to see multiple signals at the same time.
- Works with all SD, HD and Ultra HD formats up to 2160p30.

ULTRA HD 6G SDI



Blackmagic MultiView 16

Monitor up to 16 different SD, HD and Ultra HD sources and frame rates at the same time on a single Ultra HD or HD display!

- World's first native Ultra HD resolution multi viewer.
- View 4 full size HD signals at the same time!
- Connect up to 16 different SD, HD and Ultra HD SDI sources.
- Custom on-screen labels and audio meters.
- Allows SOLO, 4, 9 or 16 views to be selected

ULTRA HD 6G SDI

Blackmagic Audio Monitor 12G

Broadcast quality analog, AES/EBU and SDI audio monitoring with advanced 12G-SDI Ultra HD technology!

- Rack mount speakers, meters, screen and subwoofer.
- Unique dual subwoofer design in a 1 RU size.
- Powerful class D amplifier.
- Built in LCD for monitoring video sources.
- 12G-SDI input works with all formats up to Ultra HD 2160p60.

ULTRA HD 12G SDI

Routing and Distribution



Smart Videohub 12G 40x40

Advanced 40x40 multi format SD, HD and Ultra HD SDI router with built in monitoring, spin knob control, 12G-SDI technology!

- Mixed format 12G-SDI video router.
- 40 inputs and 40 outputs in 2 RU size.
- Use to route any signal anywhere in your facility.
- Visual routing on built in display lets you see video before routing.
- Mix SD, HD and Ultra HD up to 2160p60, display and spin knob control.

Route any
combination
of SD, HD and
Ultra HD at the
same time.

ULTRA HD 12G SDI



Routing and Distribution



Smart Videohub 12x12

Advanced 12x12 multi format SD, HD and Ultra HD SDI router with built in monitoring, spin knob control, 6G-SDI technology!

- Portable mixed format 6G-SDI video router.
- 12 inputs and 12 outputs in a single RU size.
- Perfect for small post houses or broadcast trucks.
- Visual routing on built in display lets you see video before routing.
- 6G-SDI lets you mix SD, HD and Ultra HD up to 2160p30.

ULTRAHD 6GSDI



Smart Videohub CleanSwitch 12x12

Clean switch 12x12 SD, HD and Ultra HD SDI router with built-in monitoring, spin knob control, 6G-SDI and re-sync on all inputs!

- Compact mixed format 6G-SDI video router.
- Full frame re-synchronization on every input.
- Clean glitch free switching between the same format
- Visual routing on built in display lets you see video before routing.
- 6G-SDI lets you mix SD, HD and Ultra HD up to 2160p30.

ULTRAHD 6GSDI



Smart Videohub 20x20

Advanced 20x20 multi format SD, HD and Ultra HD SDI router with built in monitoring, spin knob control 6G-SDI technology!

- Compact mixed format 6G-SDI video router.
- 20 inputs and 20 outputs in a single RU size.
- Route SD, HD and Ultra HD signals between any 2 points.
- Visual routing on built in display lets you see video before routing.
- 6G-SDI lets you mix SD, HD and Ultra HD up to 2160p30.

ULTRAHD 6GSDI



Smart Videohub 40x40

Advanced 40x40 multi format SD, HD and Ultra HD SDI router with built in monitoring, spin knob control, 6G-SDI technology!

- Mixed format 6G-SDI video router.
- 80 6G-SDI connections in a compact 2 RU size.
- Route SD, HD and Ultra HD signals between any 2 points.
- Visual routing on built in display lets you see video before routing.
- 6G-SDI lets you mix SD, HD and Ultra HD up to 2160p30.

ULTRAHD 6GSDI

Routing and Distribution



Universal Videohub 72

Modular based router which lets you add up to 18 hot swappable BNC SDI or optical fiber interfaces, a 72x72 crosspoint card and power card. All components sold separately.

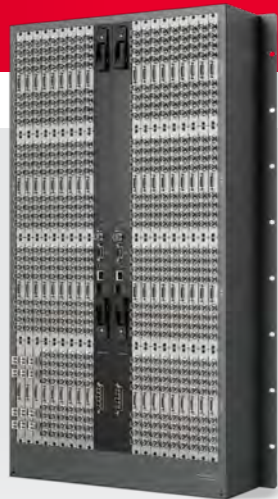
3GSDI



Videohub Smart Control

40 button control panel for XY or single destination control. Supports ethernet!

- 40 button control panel connects via ethernet and can be used anywhere.
- Cut bus style hardware control panel with support for multiple destinations.
- 40 customizable front panel buttons.
- Route any signal from anywhere to anywhere in the facility.



Universal Videohub 288

Modular based router which lets you add up to 72 hot swappable BNC SDI or optical fiber interfaces, available in 72x72 or dual 288x288 crosspoint configurations, as well as up to two power cards for redundancy. Also available with redundant crosspoints. All components sold separately.

3GSDI



Videohub Master Control

Spin knob and direct entry control panel with LCD status. Supports ethernet!

- Remote Videohub controlling for using router anywhere in your facility.
- Scroll through router sources and destinations using spin knob and LCD.
- Cut bus style hardware control panel with support for multiple destinations.
- Elegant LCD for displaying source and destination labels.

Universal Videohub Modules

Universal Videohub Deck Control Cable
Interface card remote cable with 4 x 9 pin deck control connections!

Universal Videohub 12V 150W Power Supply
12V 150W Power supply for Universal Videohub 72!

Universal Videohub SDI Interface
3G-SDI interface for Universal Videohub. 4 x SDI in, out and deck control!

Universal Videohub 450W Power Card
Low cost power card for Universal Videohub supports power bricks up to 450W!

Universal Videohub Optical Fiber Interface
Optical fiber interface for Universal Videohub. 4 x Optical in and out including deck control!

Universal Videohub Power Supply
Rack based power supply and card for Universal Videohub for large routers!



www.blackmagicdesign.com

© Blackmagic Design Pty. Ltd 2019.

All Rights Reserved. All trademarks are properties of their respective owners.
All prices and specifications are subject to change without notice.