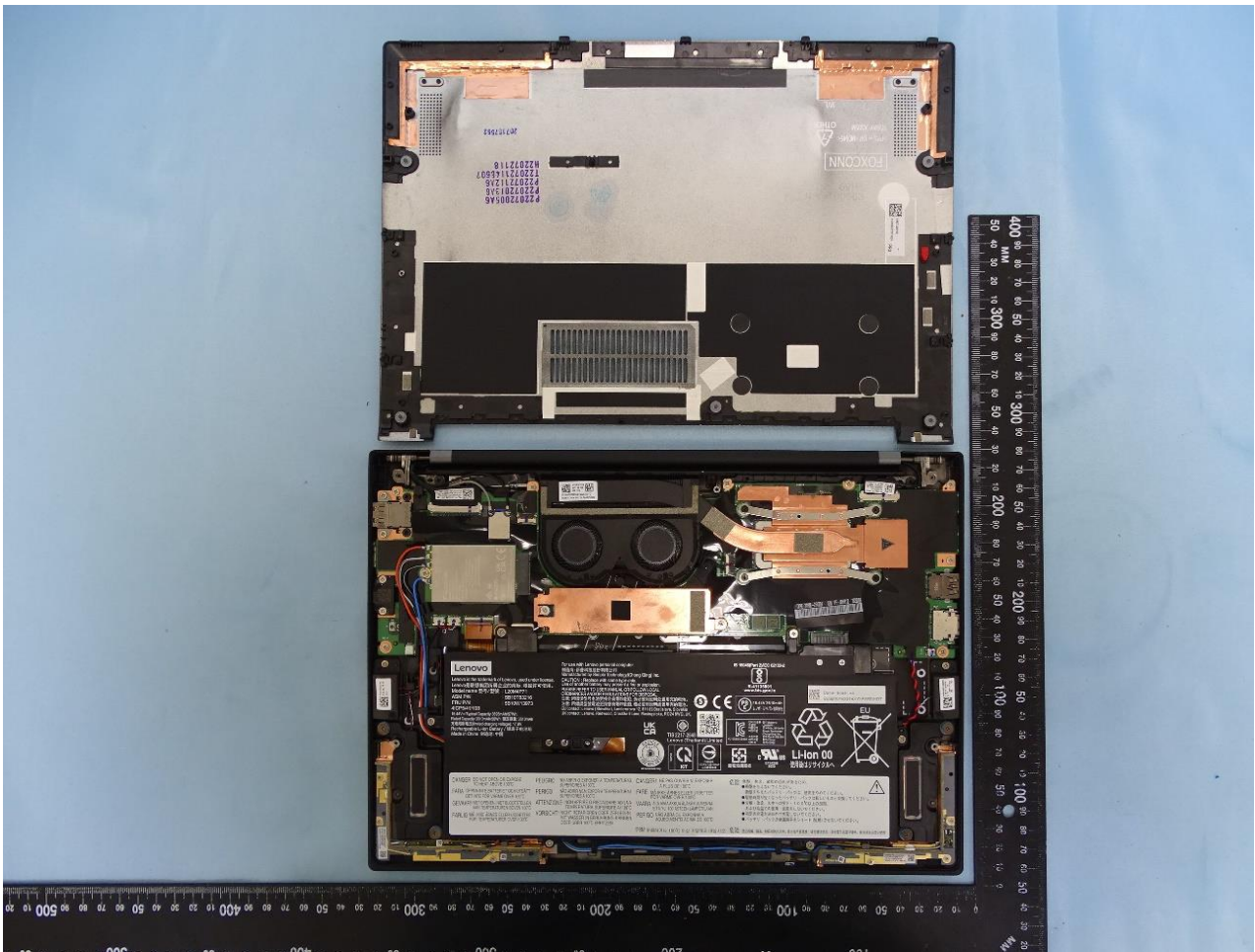
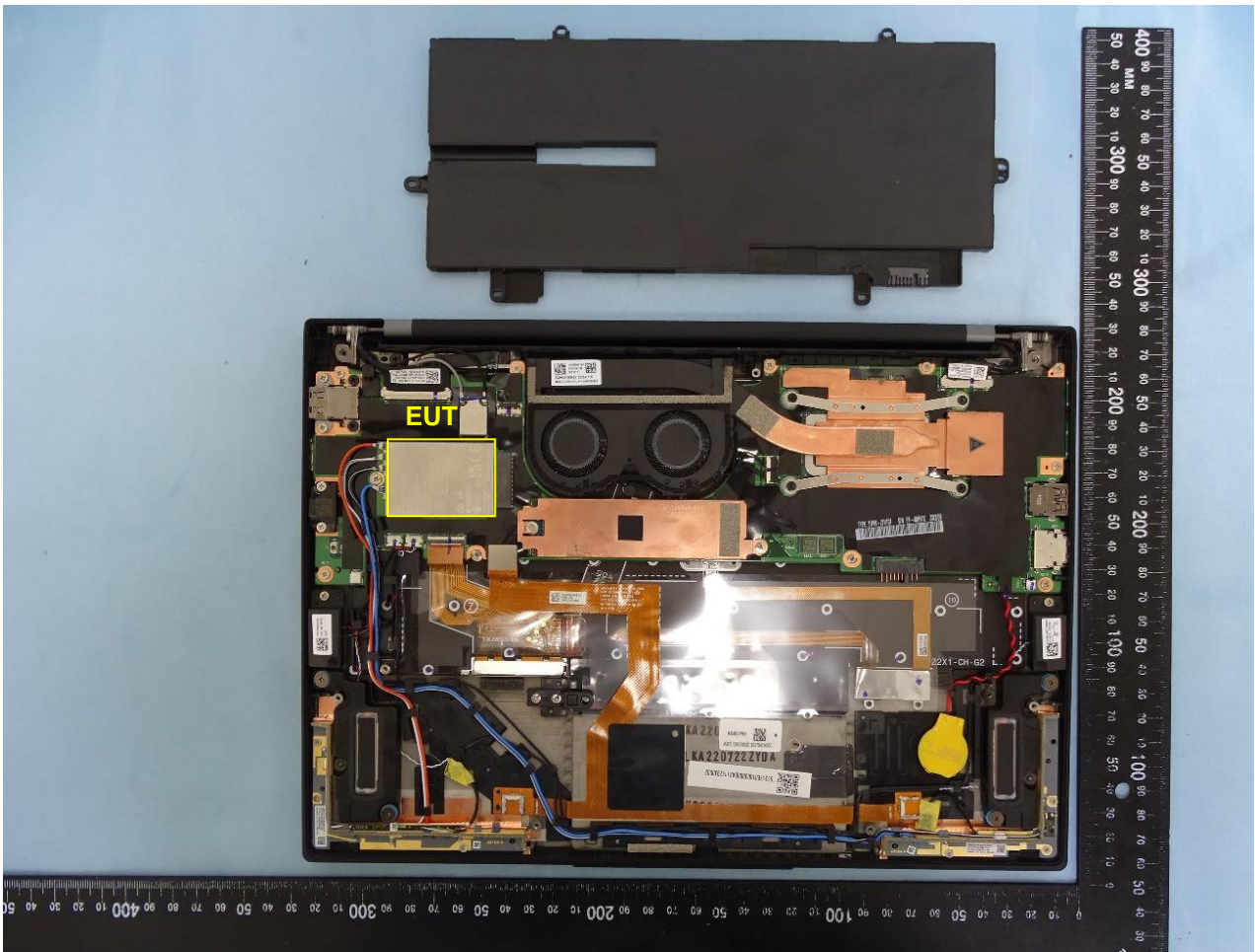


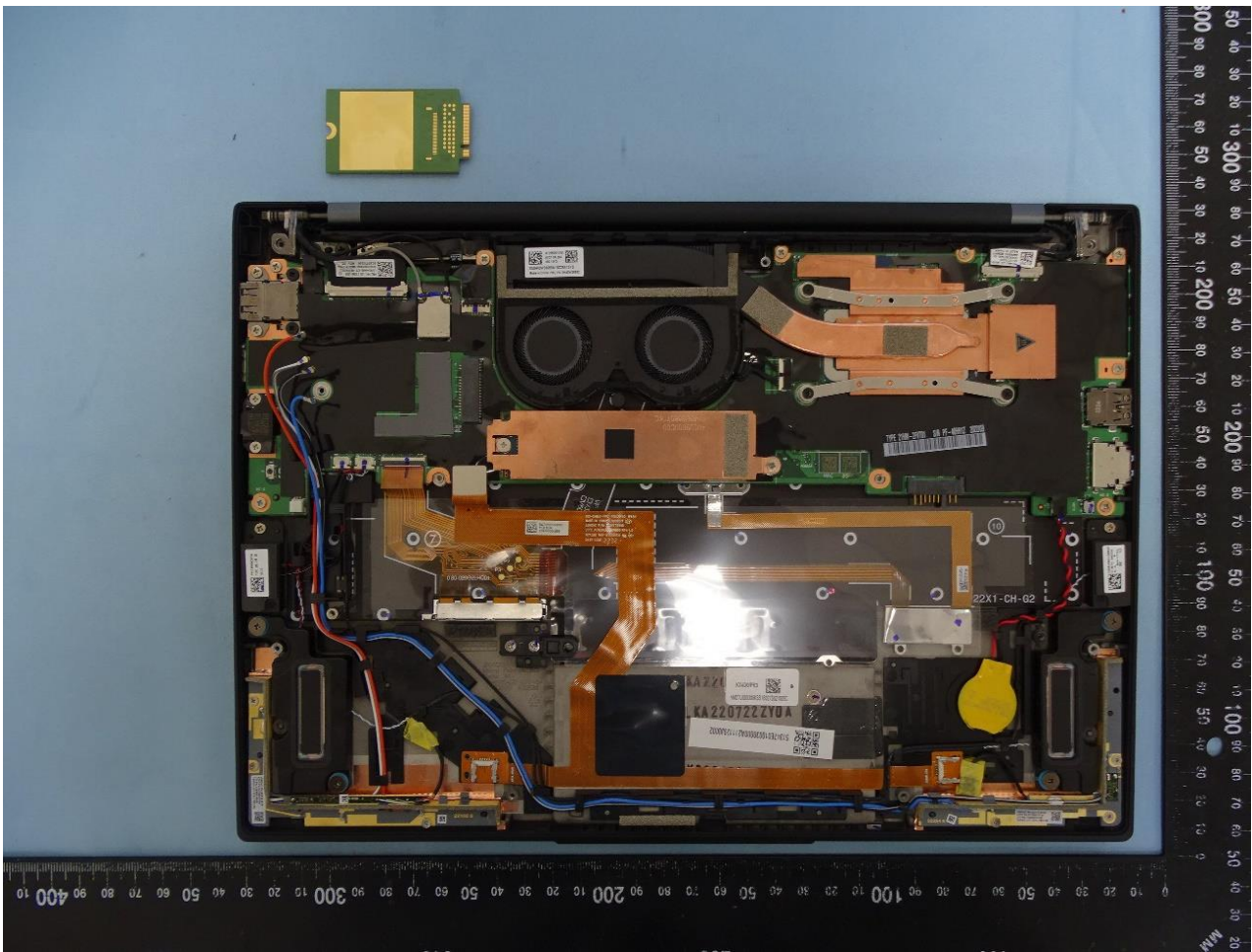
3. Internal Photograph of the Host

Amphenol Antenna and Novocomms/JYT Antenna

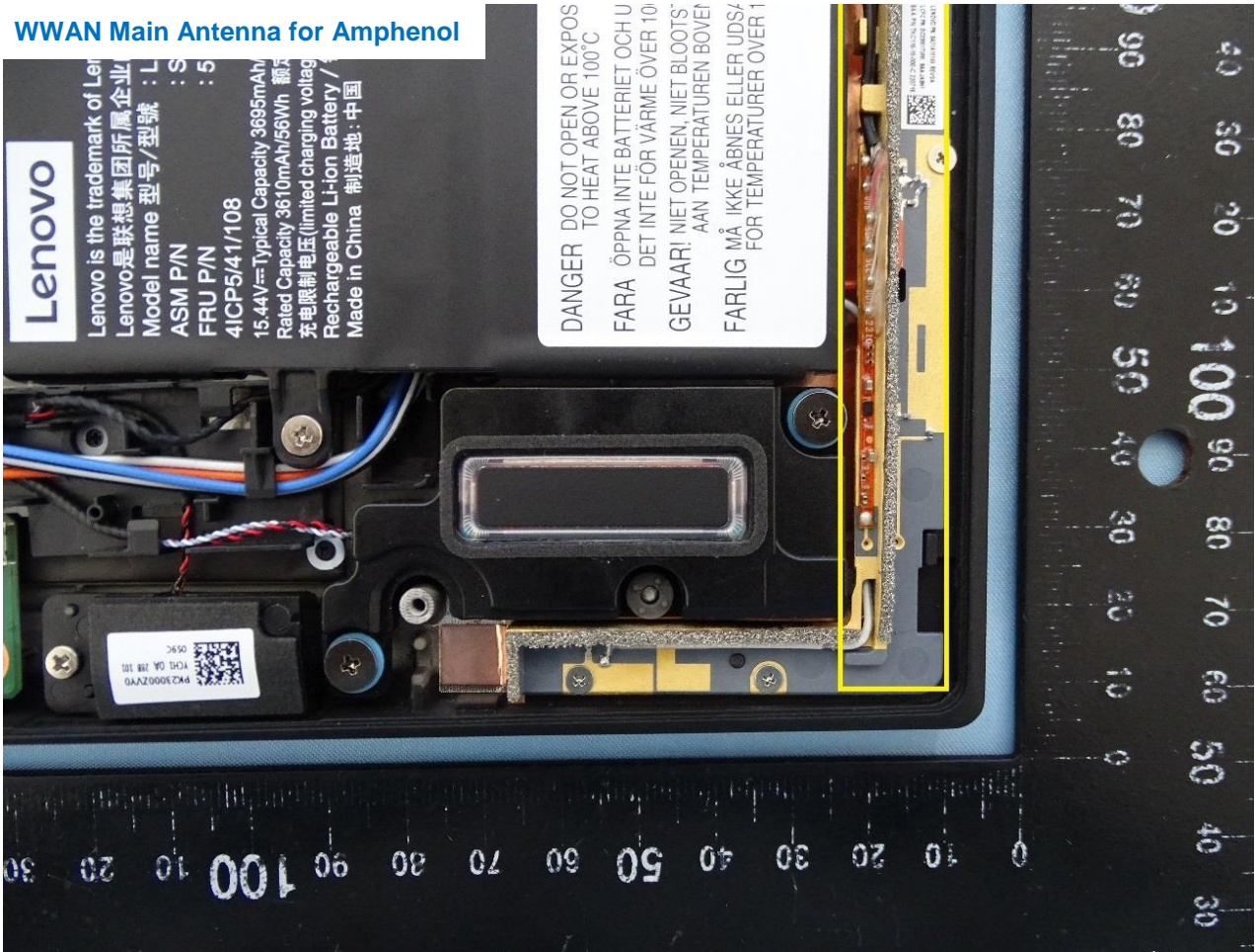




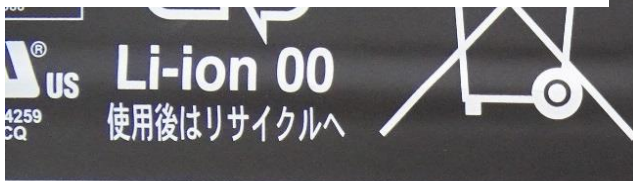




WWAN Main Antenna for Amphenol



WWAN Aux. and GPS Antenna for Amphenol

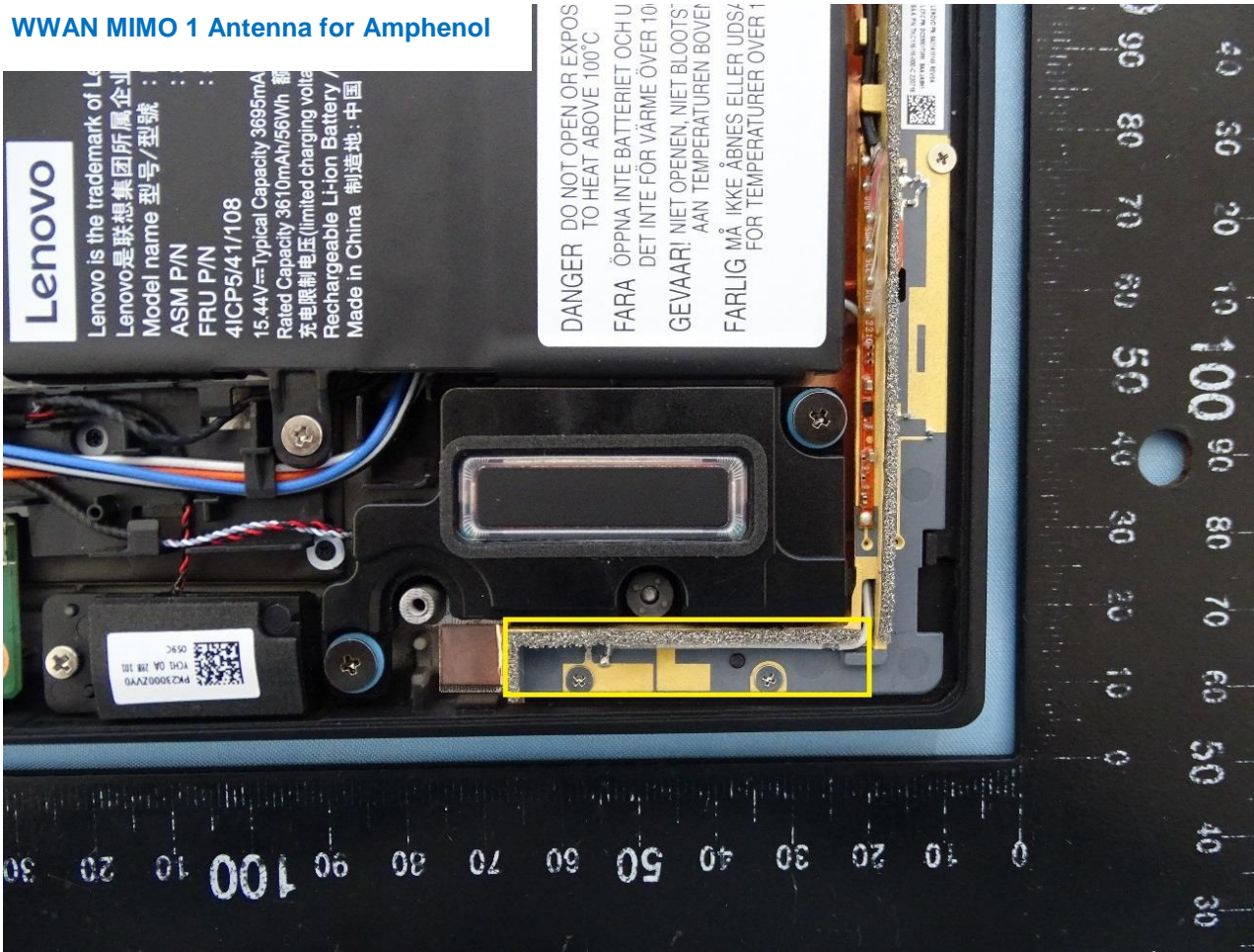


裂の恐れがあるため、
してください。
バッテリー・パックは、使用をやめてください。
なったバッテリー・パックは新しいものと交換してください。
中への投下・100℃以上の加熱、
使用・放置をしないでください。
以外で充電しないでください。
クの金属端子をショート(短絡)させないでください。

或投入火中。若出现严重鼓胀，请勿继续使用。请勿置于高温环境中。电池浸水后禁止使用!



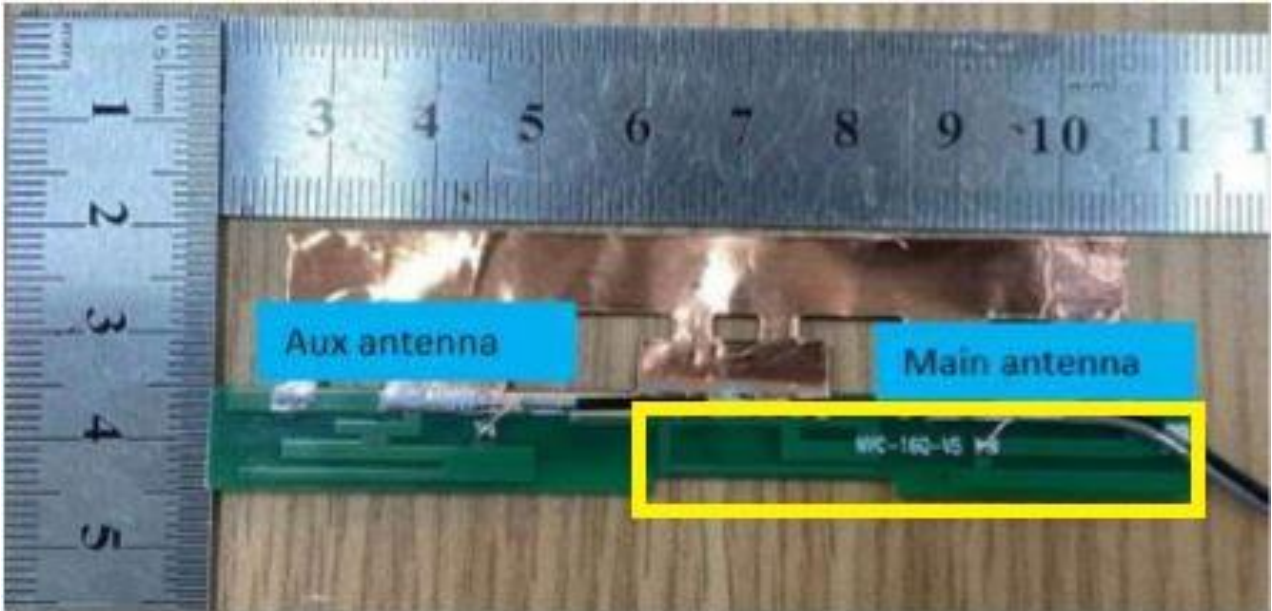
WWAN MIMO 1 Antenna for Amphenol



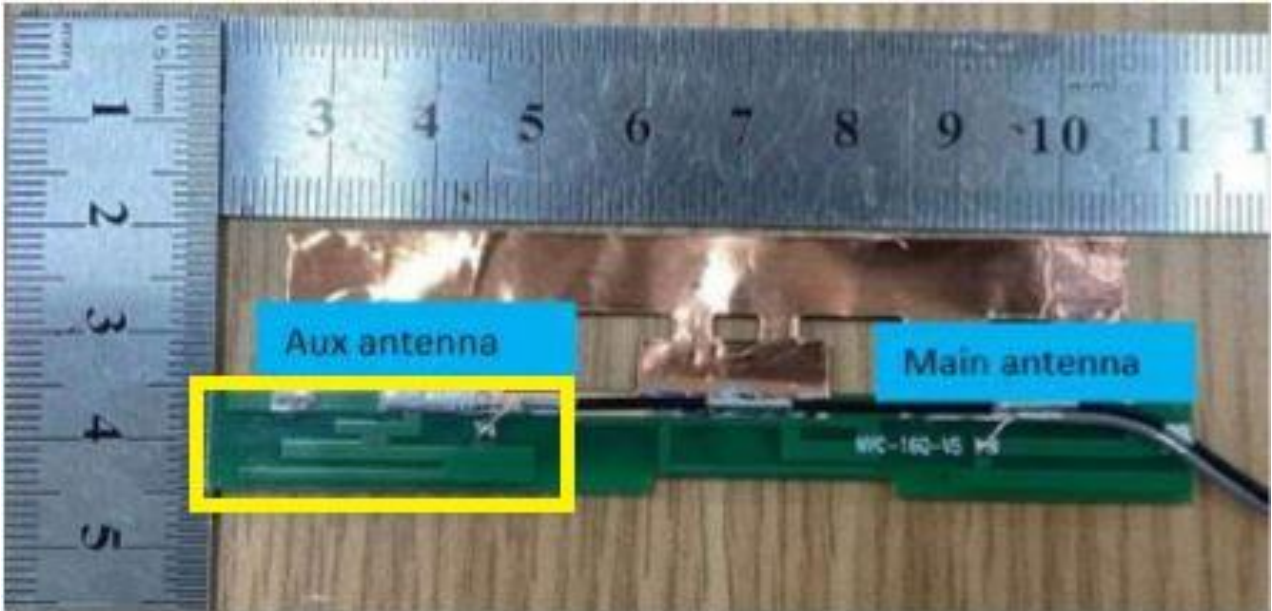
WWAN MIMO 2 Antenna for Amphenol



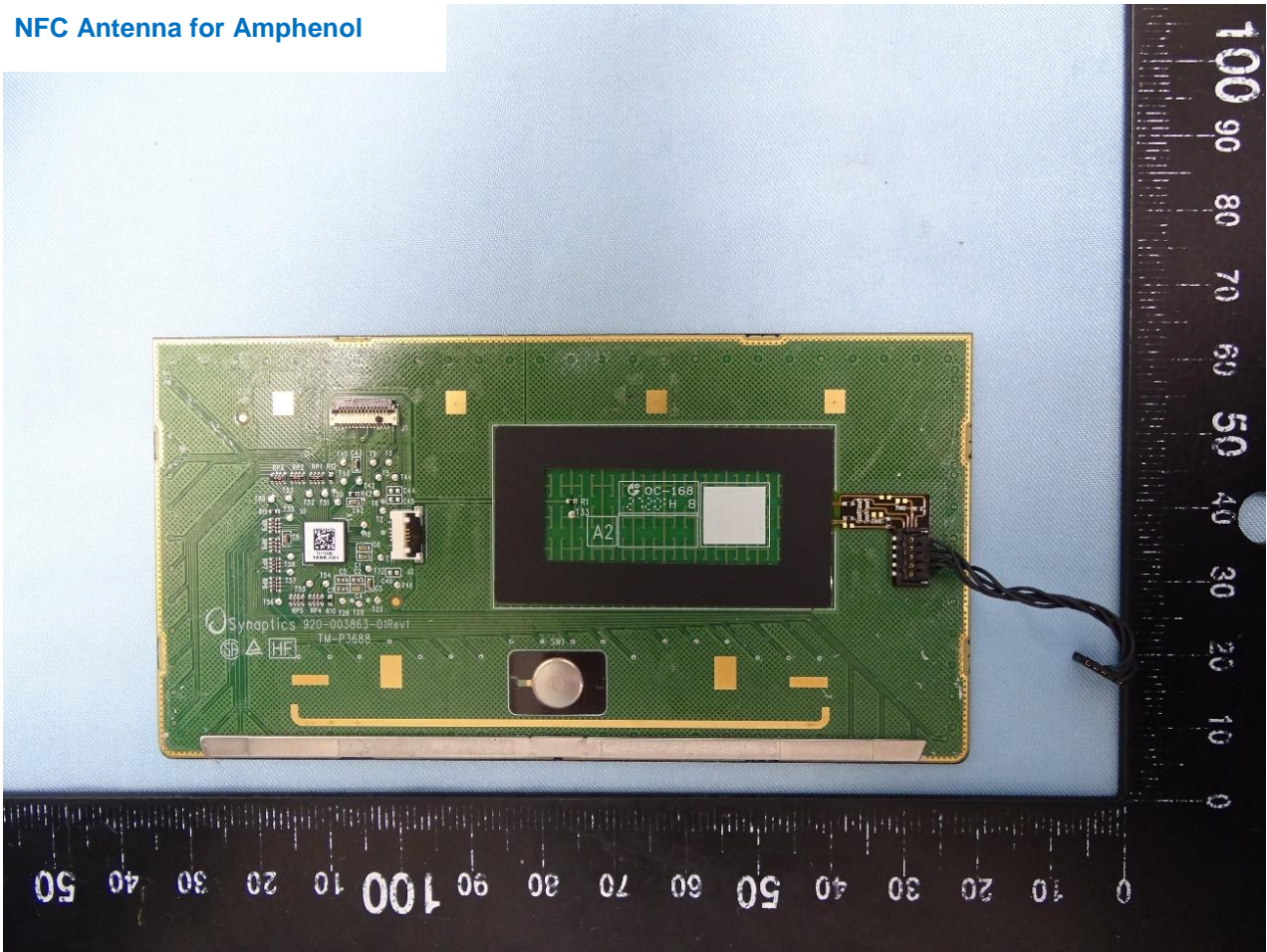
WLAN Main Antenna for Amphenol



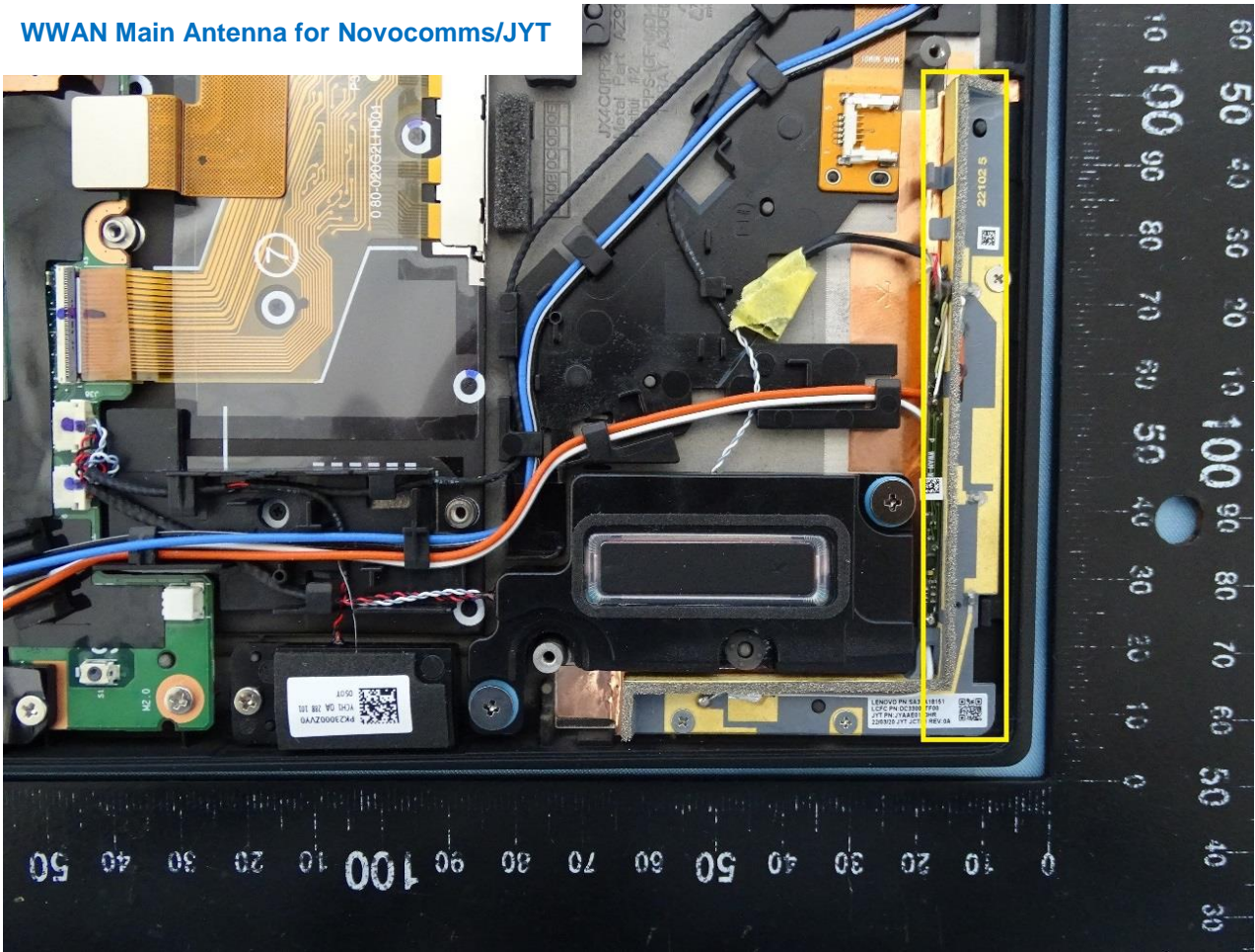
WLAN Aux. and Bluetooth Antenna for Amphenol



NFC Antenna for Amphenol



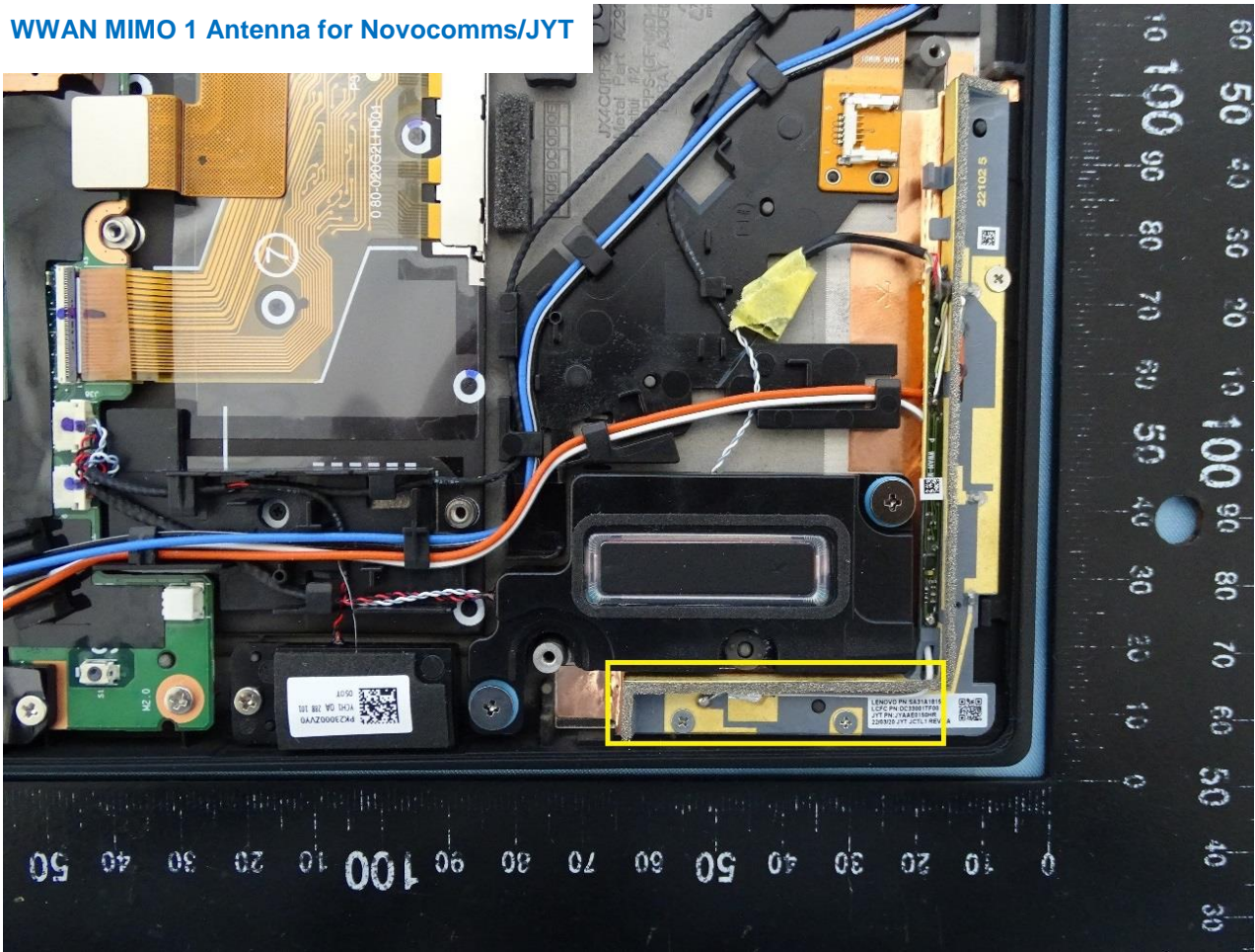
WWAN Main Antenna for Novocomms/JYT



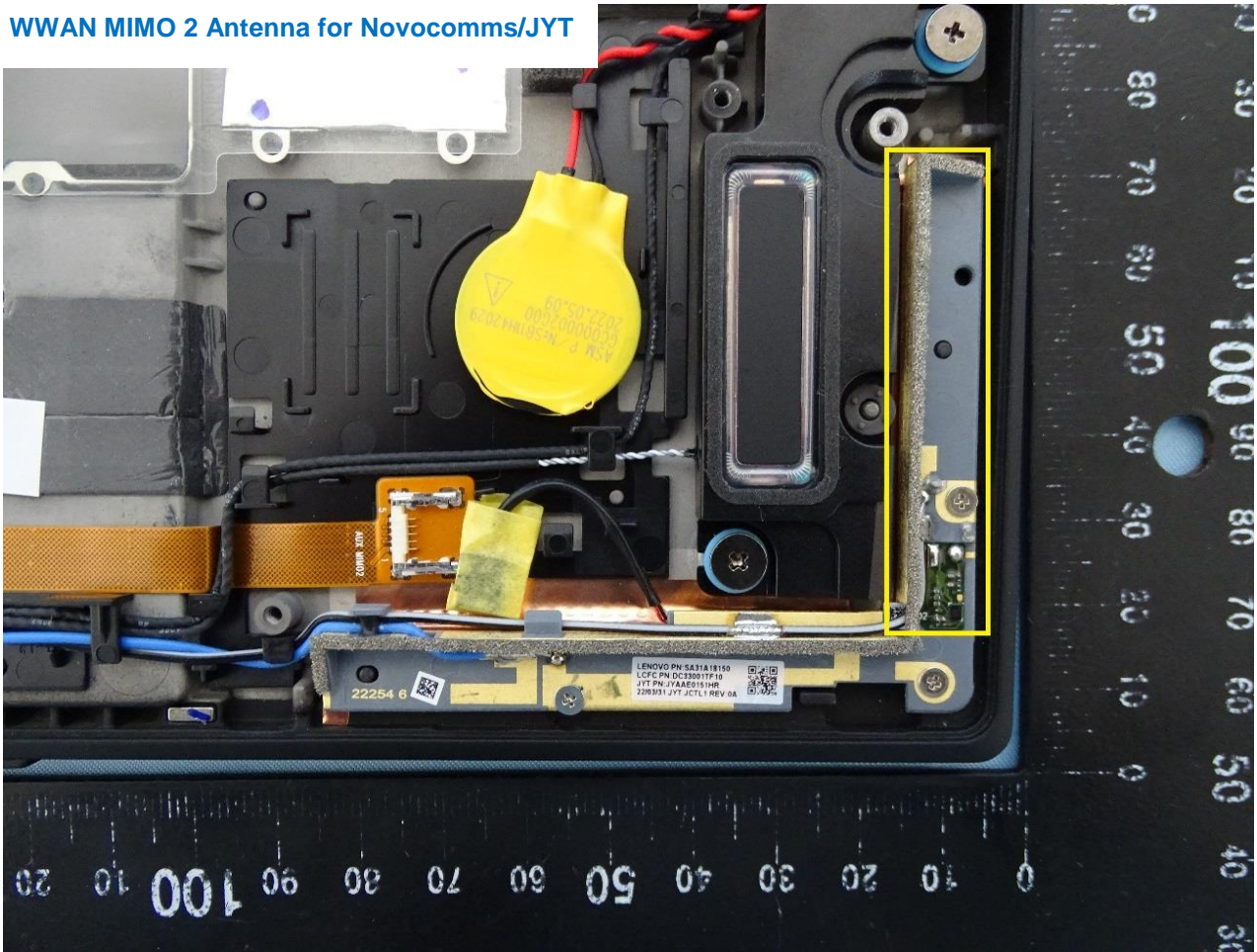
WWAN Aux. and GPS Antenna for Novocomms/JYT



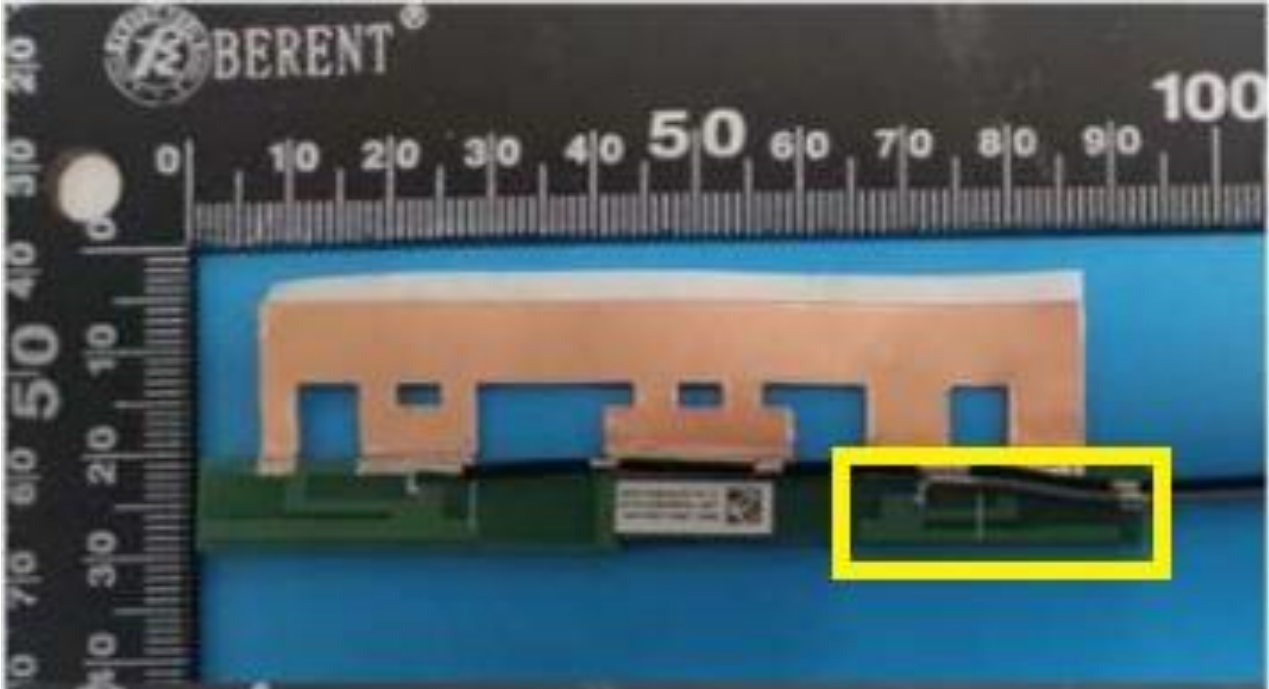
WWAN MIMO 1 Antenna for Novocomms/JYT



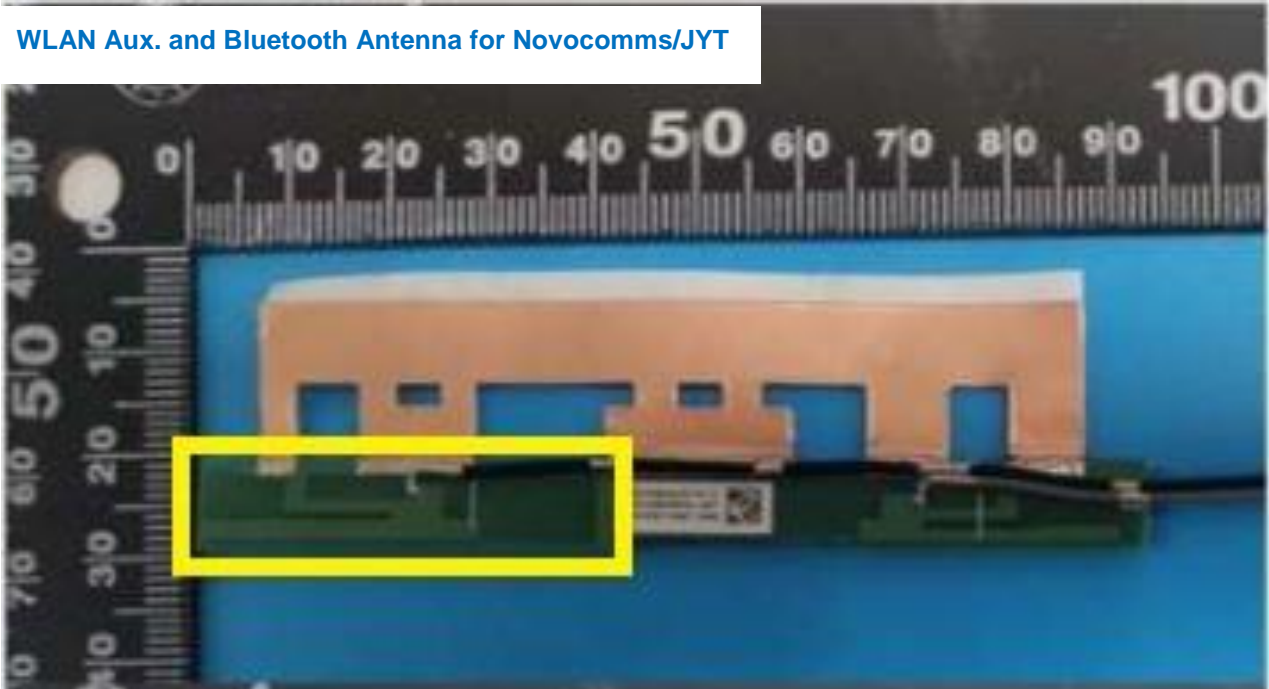
WWAN MIMO 2 Antenna for Novocomms/JYT



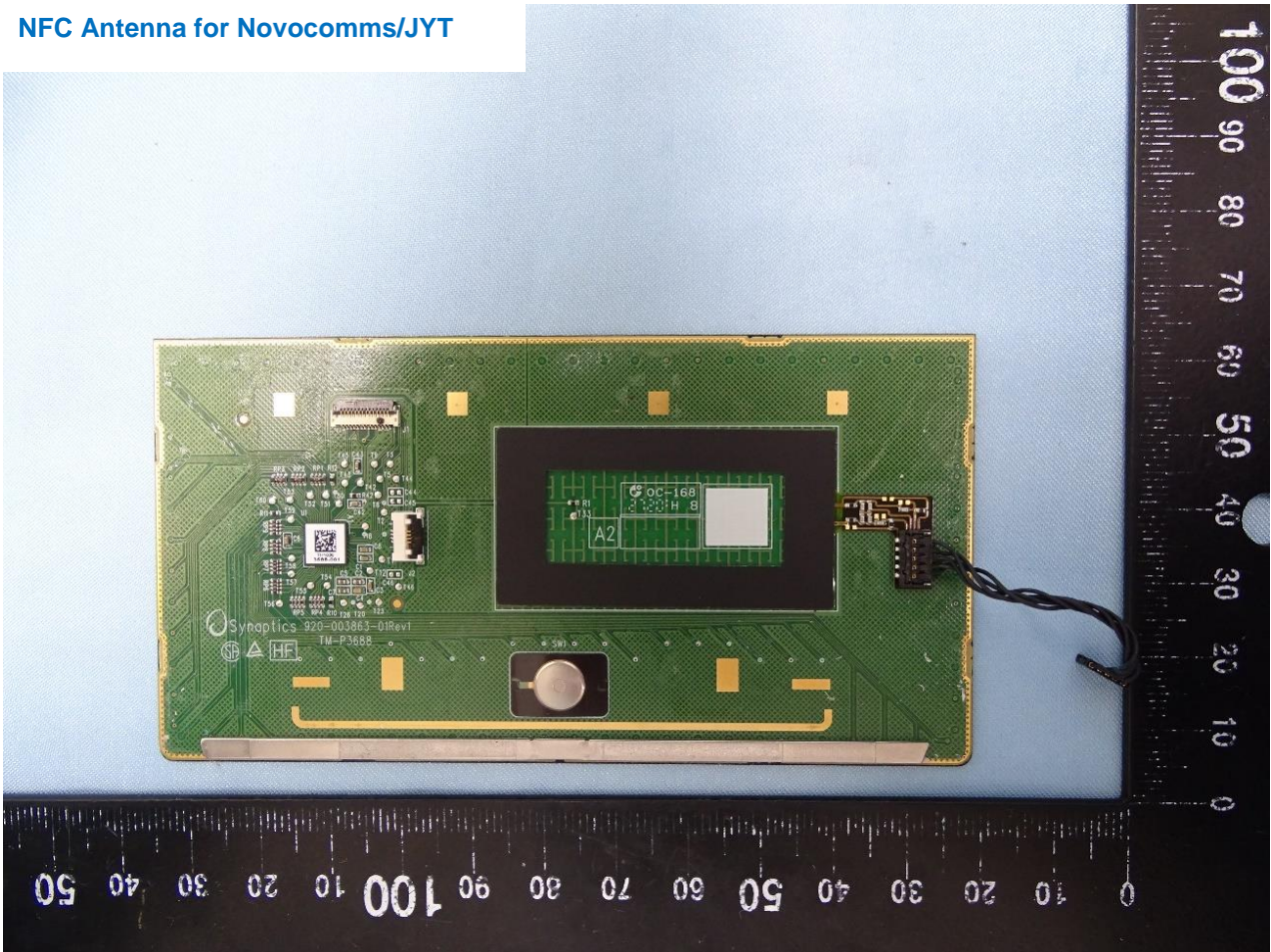
WLAN Main Antenna for Novocomms/JYT



WLAN Aux. and Bluetooth Antenna for Novocomms/JYT



NFC Antenna for Novocomms/JYT



————THE END————