



HUAWEI M-Pen lite

Quick Start



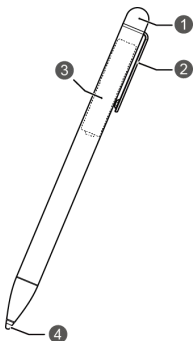
The M-Pen lite can be used with your HUAWEI MediaPad M5 lite 10. For other models that may support the M-Pen lite in the future, please follow up with our product updates.



902313_01

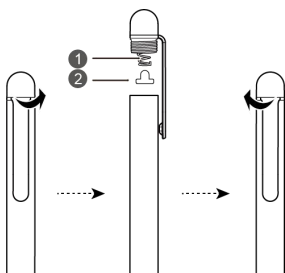
1 M-Pen lite

The M-Pen lite is a substitute for your fingers, offering you a lot of handwriting and drawing fun when working with feature apps.



1	Pen cap	2	Pen clip
3	Dry cell battery (AAAA)	4	Pen tip

Using your M-Pen lite for the first time

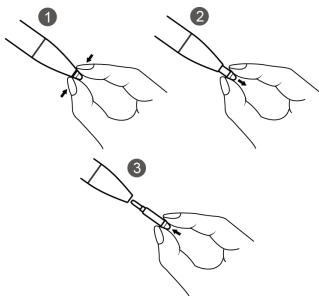


Before using your M-Pen lite for the first time, unscrew the pen cap, take out the red insulation pad beneath the pen cap, and then screw in the pen cap, as shown in the preceding illustration. You are now ready to use your M-Pen lite.

 Remove the battery from your M-Pen lite if

you are not planning to use it for a long period of time. When replacing the battery, insert the new battery into the pen with the "+" sign at the bottom and the "-" sign at the top.

Changing the pen tip



1. Use forceps or your fingernails to clamp the pen tip.
2. Pull the pen tip out with force. Clamp tightly onto the pen tip so that you don't lose your grip.
3. Clamp the top part of the spare tip and insert the bottom part into the pen. Push it in until it is firmly in place to prevent it from becoming loose and getting lost.



Follow the instructions and exercise caution to avoid damaging the internal components of your M-Pen lite.

When replacing the pen tip, hold it steady to prevent it from falling.

Keep the removed tip out of the reach of young children to prevent them from swallowing it.



The spare pen tip does not come with your M-Pen lite. If the pen tip of your M-Pen lite is broken, you can go to an authorized Huawei Customer Service Center to replace it. Your Huawei device only supports Huawei official pen tips.

2 Safety information

This section contains important information about the operation of your device. It also contains information

about how to use the device safely. Read this information carefully before using your device.

Operating environment

- Avoid dusty, damp, or dirty environments. Avoid magnetic fields. Using the device in these environments may result in circuit malfunctions.
- Ideal operating temperatures are 0°C to 35°C. Ideal storage temperatures are -20°C to +45°C. Extreme heat or cold may damage your device or accessories.
- Do not expose your device to direct sunlight (such as on a car dashboard) for prolonged periods.
- Keep the device away from sources of heat and fire, such as a heater, microwave oven, stove, water heater, radiator, or candle.
- Do not allow children or pets to bite or suck the device or accessories. Doing so may result in damage or explosion.

Child's safety

- Comply with all precautions with regard to child's safety. Letting children play with the device or its accessories may be dangerous. The device includes detachable parts that may present a choking hazard. Keep away from children.
- The device and its accessories are not intended for use by children. Children should only use the device with adult supervision.

Accessories

Choose only accessories approved for use with this model by the device manufacturer. The use of any other types of accessories may void the warranty, may violate local regulations and laws, and may be dangerous. Please contact your retailer for information about the availability of approved accessories in your area.

Battery safety

- Keep the battery away from excessive heat and direct sunlight. Do not place it on or in heating devices, such as microwave ovens, stoves, or radiators. Batteries may explode if overheated.
- Do not attempt to modify or remanufacture the battery, insert foreign objects into it, or immerse or expose it to water or other liquids. Doing so may lead to fire, explosion, or other hazards.
- If the battery leaks, ensure that the electrolyte does not make direct contact with your skins or eyes. If the electrolyte touches your skins or splashes into your eyes, immediately flush with clean water and consult a doctor.

- Do not put batteries in fire as they may explode. Damaged batteries may also explode.
- Dispose of used batteries in accordance with local regulations. Improper battery use may lead to fire, explosion, or other hazards.
- Do not allow children or pets to bite or suck the battery. Doing so may result in damage or explosion.
- Do not smash or pierce the battery, or expose it to high external pressure. Doing so may lead to a short circuit or overheating.

Cleaning and maintenance

- Keep the device and accessories dry. Do not attempt to dry it with an external heat source, such as a microwave oven or hair dryer.
- Do not expose your device or accessories to extreme heat or cold. These environments may interfere with proper function and may lead to fire or explosion.
- Avoid collision, which may lead to device malfunctions, overheating, fire, or explosion.
- Do not use any chemical detergent, powder, or other chemical agents (such as alcohol and benzene) to clean the device or accessories. These substances may cause damage to parts or present a fire hazard. Use a clean, soft, and dry cloth to clean the device and accessories.
- Do not dismantle or remanufacture the device and its accessories. This voids the warranty and releases the manufacturer from liability for damage. In case of damage, contact an authorized service center for assistance or repair.

Environmental protection

- The device and its accessories (if included), such as the power adapter, headset, and battery should not be disposed of with household garbage.
- Disposal of the device and its accessories is subject to local regulations. Support proper collection and recycling.

Disposal and recycling information



The crossed-out wheeled-bin symbol on your product, battery, literature or packaging reminds you that all electronic products and batteries must be taken to separate waste collection points at the

end of their working lives; they must not be disposed of in the normal waste stream with household garbage. It is the responsibility of the user to dispose of the equipment using a designated collection point or service for separate recycling of waste electrical

and electronic equipment (WEEE) and batteries according to local laws.

Proper collection and recycling of your equipment helps ensure electrical and electronic equipment (EEE) waste is recycled in a manner that conserves valuable materials and protects human health and the environment, improper handling, accidental breakage, damage, and/or improper recycling at the end of its life may be harmful for health and environment. For more information about where and how to drop off your EEE waste, please contact your local authorities, retailer or household waste disposal service or visit the website

<http://consumer.huawei.com/en/>.

Reduction of hazardous substances

This device and any electrical accessories are compliant with local applicable rules on the restriction of the use of certain hazardous substances in electrical and electronic equipment, such as EU REACH, RoHS and Batteries (where included) regulations, etc. For declarations of conformity about REACH and RoHS, please visit our web site

<http://consumer.huawei.com/certification>.

EU regulatory conformance

Hereby, Huawei Technologies Co., Ltd. declares that this device is in compliance with the essential requirements and other relevant provisions of RoHS Directive 2011/65/EU and EMC Directive 2014/30/EU.



This device may be operated in all member states of the EU.

Observe national and local regulations where the device is used.

This device may be restricted for use, depending on the local network.

FCC Regulatory Compliance

FCC statement

This equipment has been tested and found to comply with the limits for a Class B digital device, pursuant to Part 15 of the FCC Rules. These limits are designed to provide reasonable protection against harmful interference in a residential installation. This equipment generates, uses and can radiate radio frequency energy and, if not installed and used in accordance with the instructions, may cause harmful interference to radio communications. However, there is no guarantee that interference will not occur in a particular installation. If this equipment does

cause harmful interference to radio or television reception, which can be determined by turning the equipment off and on, the user is encouraged to try to correct the interference by one or more of the following measures:

- Reorient or relocate the receiving antenna.
- Increase the separation between the equipment and receiver.
- Connect the equipment into an outlet on a circuit different from that to which the receiver is connected.
- Consult the dealer or an experienced radio/TV technician for help.

This device complies with Part 15 of the FCC Rules. Operation is subject to the following two conditions: (1) this device may not cause harmful interference, and (2) this device must accept any interference received, including interference that may cause undesired operation.

Caution: Any changes or modifications to this device not expressly approved by Huawei Technologies Co., Ltd. for compliance could void the user's authority to operate the equipment.

Industry Canada compliance IC Statement

This device complies with CAN ICES-3 (B)/NMB-3(B).

This device complies with Industry Canada licence-exempt RSS standard(s). Operation is subject to the following two conditions: (1) this device may not cause interference, and (2) this device must accept any interference, including interference that may cause undesired operation of the device.

3 Limited warranty statement

This warranty is subject to the following terms and conditions:

- The defective unit along with the sales invoice must be brought or sent to the Authorized Service Centre, during normal working hours, by end customer at his own expense.
- Any defect arising due to misuse of the unit, damages due to liquid ingress, or physical abuse, or normal wear and tear will not be covered by this warranty. Plastic components like front & back cover plus rubber component like key pads, antenna will not be treated under warranty coverage.
- The warranty is void if the unit is tampered with, altered or repaired by unauthorized persons.
- The warranty is void if the serial number of the unit is deleted, defaced or altered rendering it difficult to identify the instrument.
- There are no customer serviceable parts inside the unit and hence the same should not be opened by the user or any person other than the authorized service personnel. The warranty is void if the warranty seal on the unit is broken.
- Damages caused to the unit, by accidents, lightning or any other acts of God are not covered by this warranty.
- Whether defective items or components are to be replaced or repaired shall be left to the sole discretion of Supplier. In case of replacement of a part, the defective part removed from the unit becomes the property of Huawei Technologies Co., Ltd. ('HUAWEI').
- EXCEPT FOR THE EXPRESS WARRANTIES SET FORTH ABOVE, HUAWEI GRANTS NO OTHER WARRANTIES, EXPRESS OR IMPLIED, BY STATUTE OR OTHERWISE, REGARDING THE PRODUCT, FITNESS FOR ANY PURPOSE OR OTHERWISE. HUAWEI SHALL NOT BE LIABLE FOR THE LOSS OF USE OF THE PRODUCT, INCONVENIENCE, LOSS OR ANY OTHER CONSEQUENTIAL DAMAGE, ARISING OUT OF THE USE OF, OR INABILITY TO USE THE PRODUCT OR FOR BREACH OF ANY EXPRESS OR IMPLIED WARRANTY.
- The product just can get in warranty service from the country or area where you have purchased it.


4 Legal Notice

Copyright © Huawei Technologies Co., Ltd. 2018. All rights reserved.

THIS DOCUMENT IS FOR INFORMATION PURPOSE ONLY, AND DOES NOT CONSTITUTE ANY KIND OF WARRANTIES.

Privacy Policy

To better understand how we protect your personal information, please see the privacy policy at <http://consumer.huawei.com/privacy-policy>.

-  All pictures and illustrations in this guide are for your reference only. The actual product may vary. Nothing in this guide constitutes a warranty of any kind, express or implied.

Huawei Technologies Co., Ltd.

Address: Huawei Industrial Base
Bantian, Longgang
Shenzhen 518129
People's Republic of China

Website: <http://consumer.huawei.com/en/>

Email: mobile@huawei.com

Model: AF63