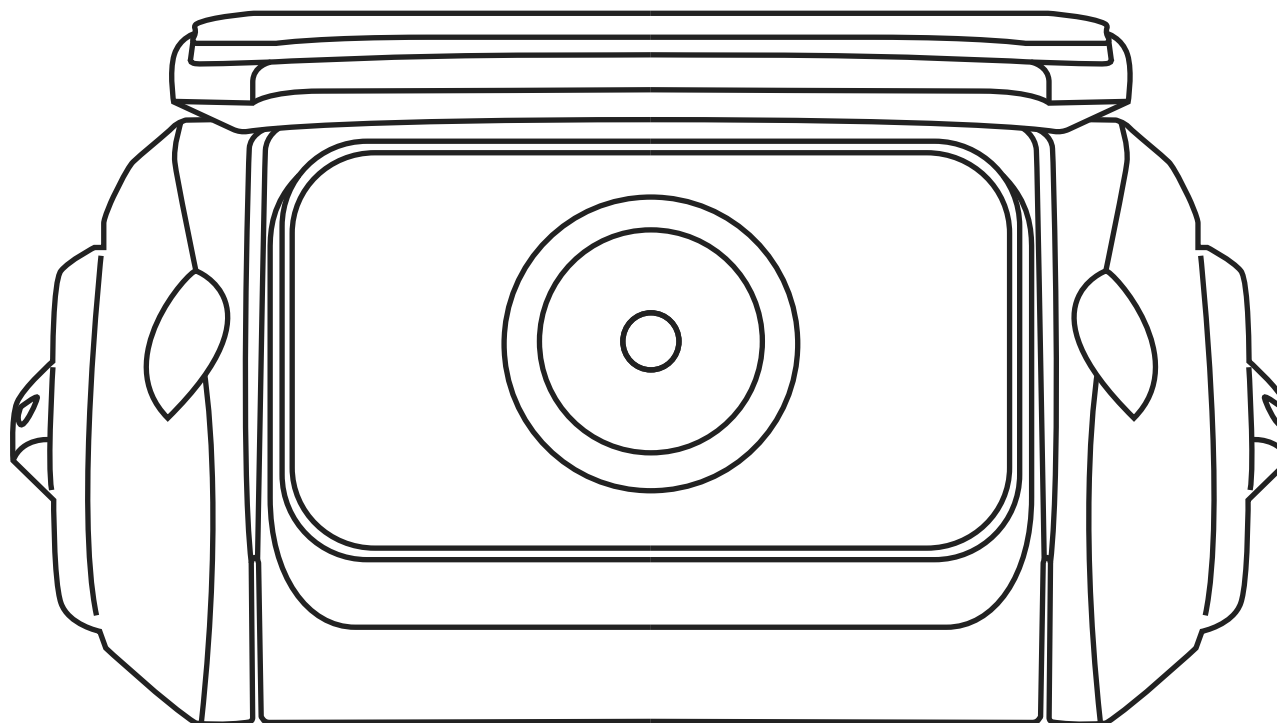


SYLVANIA

ROADSIGHT REAR

Rear Camera



WARNING

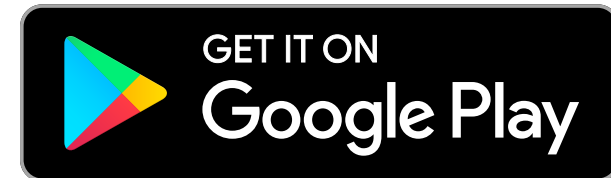
The Rear Cam must not be fitted in a position which obscures the driver's view of the road ahead.

Depending on the country of use, recordings made with this device may be subject to Data Protection Laws. Ensure these are complied with. If the dash cam is to be used in a commercial environment e.g. taxi or truck, then CCTV Regulations may apply. Playback of video which is visible to the driver while the vehicle is in motion is prohibited in some countries. Only use the supplied power adapter, otherwise damage may occur to the dash cam. Take care when cleaning the dash cam lens and only use a suitable lens cleaner and a soft cloth. Do NOT expose this product to rain, moisture, or water under any circumstances; doing so may result in the risk of electric shock or fire. Do NOT perform servicing other than that contained in the instruction manual unless you are qualified to do so. When installing in a vehicle, always place the device securely against the windscreen and where possible conceal the power cable under the vehicle's interior trim. Make sure that the power cable does not interfere with the driver's controls such as the steering wheel, pedals, or gear lever. Do NOT mount the dash cam in front of an airbag deployment area or in a position to obscure any interior mirrors. Do NOT operate while driving and only adjust settings or review recordings while not driving.

BEFORE YOU BEGIN

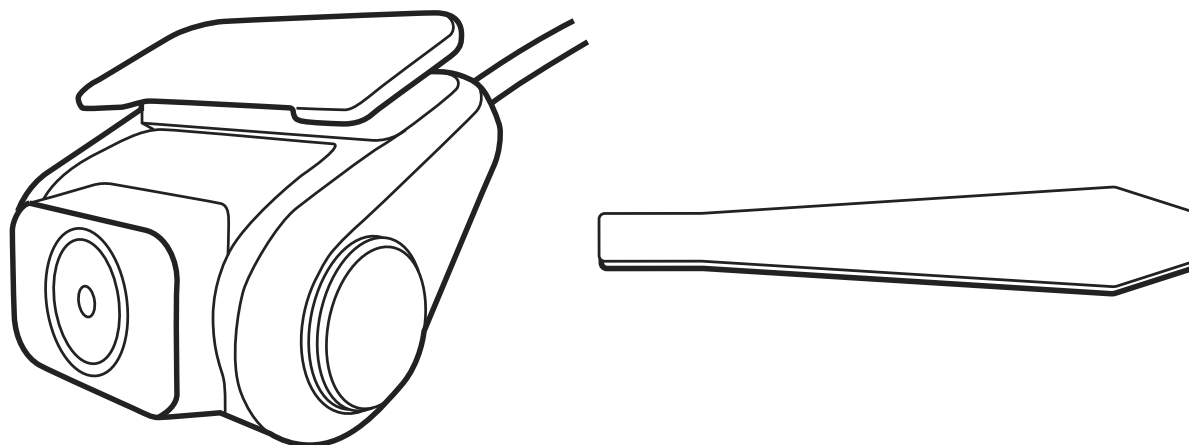
If you have not already downloaded the app, do so now to get the most from your dash camera.

- 1** Download the app by searching for SYLVANIA CONNECT in the App Store (iPhone) or Google Play (Android).
- 2** Open the app, follow the setup process shown and enable all necessary settings when prompted.



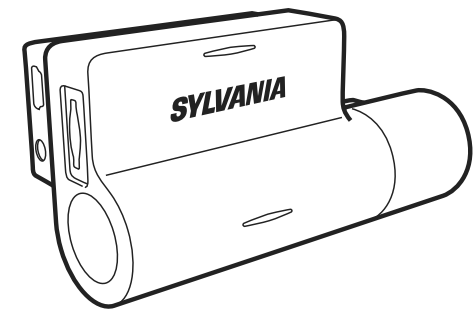
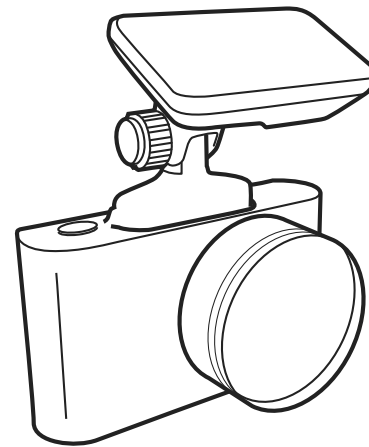
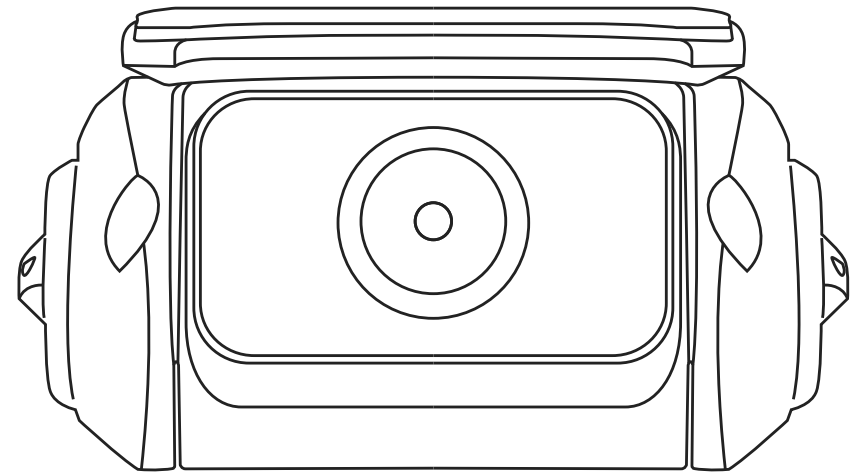
PACKAGE CONTENTS

- 1** Rear Cam
- 2** Quick Start Guide
- 3** Trim Removal Tool
- 4** Window Sticker

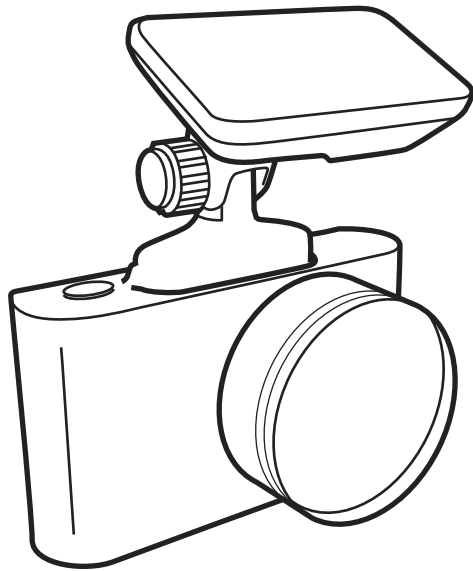


PAIR WITH DASH CAM

The SYLVANIA Roadside Rear camera needs to be paired with a SYLVANIA dash camera to operate. Compatible with SYLVANIA Roadside PRO dash camera and SYLVANIA Roadside STEALTH dash camera.

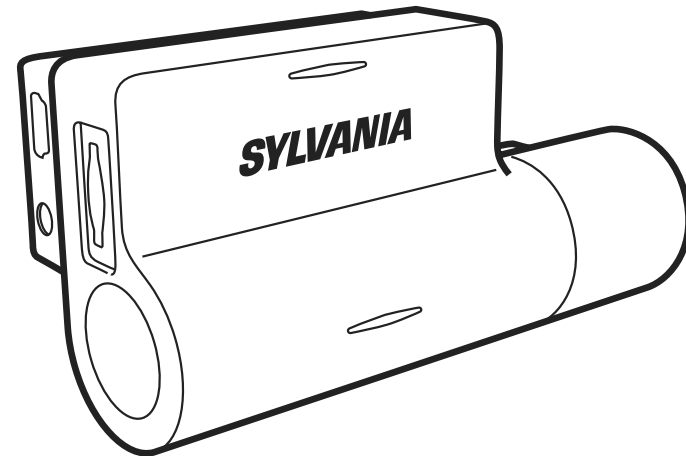


DASH CAMERA: INSTALLATION GUIDES



ROADSIGHT PRO DASH CAMERA

INSTALL GUIDE

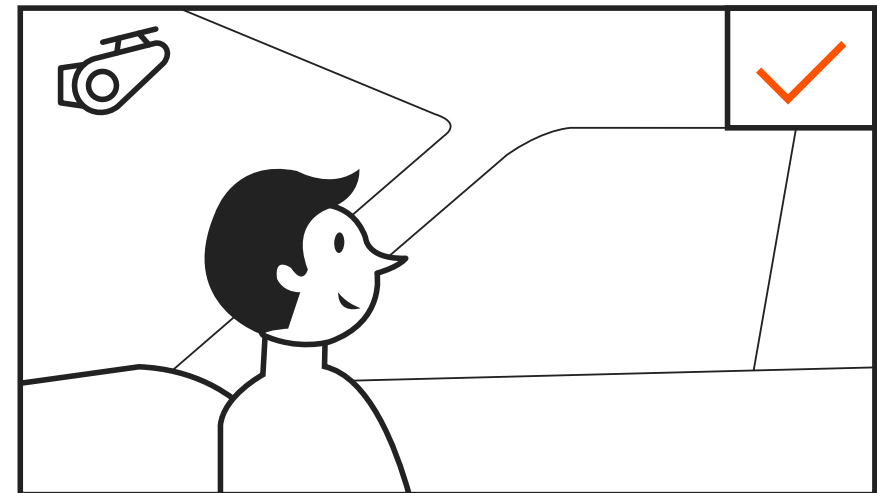
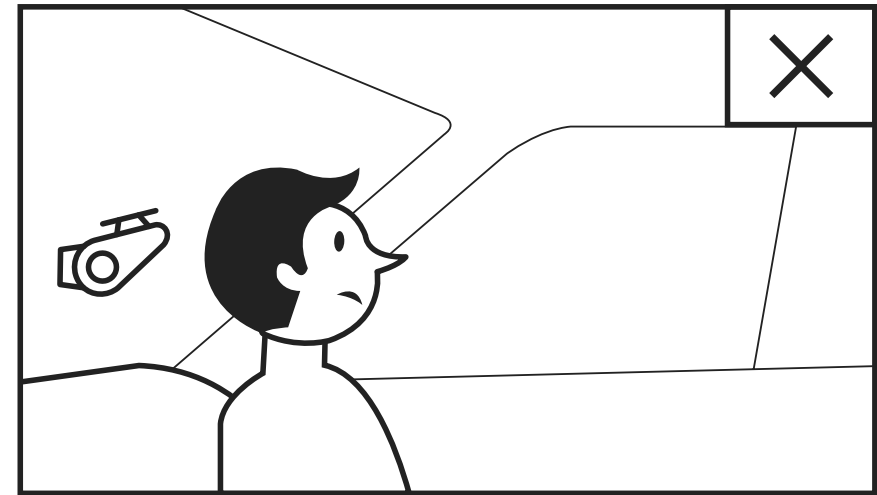


ROADSIGHT STEALTH DASH CAMERA

INSTALL GUIDE

PLACING REAR CAMERA

To ensure a proper viewing angle of the road behind your vehicle place the rear camera towards the top of your rear window. Giving the rear camera an unobstructed view of the road.

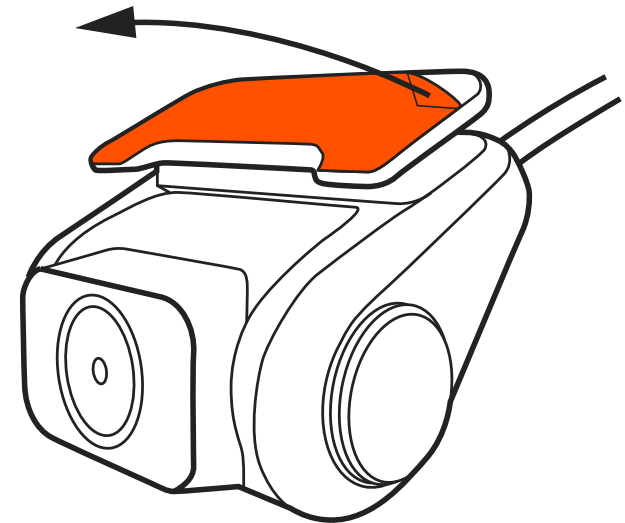
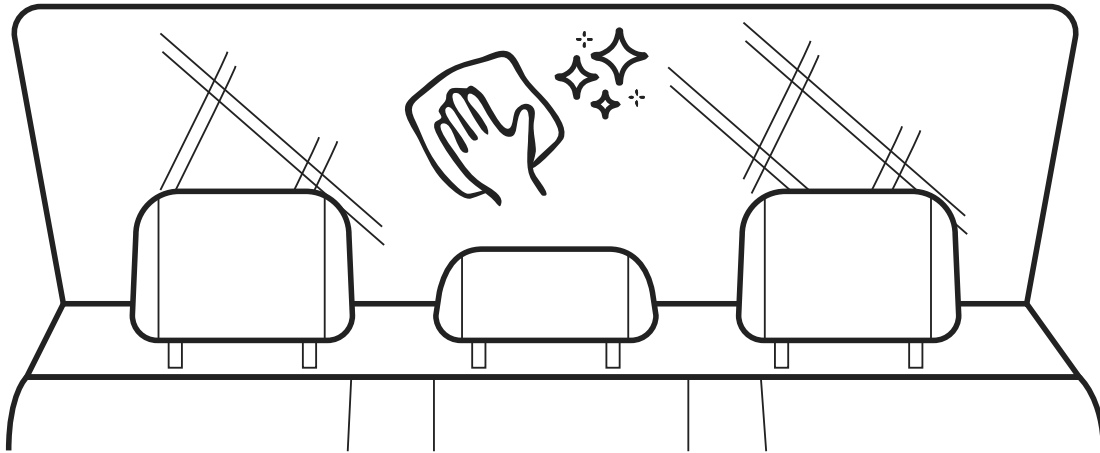


INSTALLING REAR CAMERA

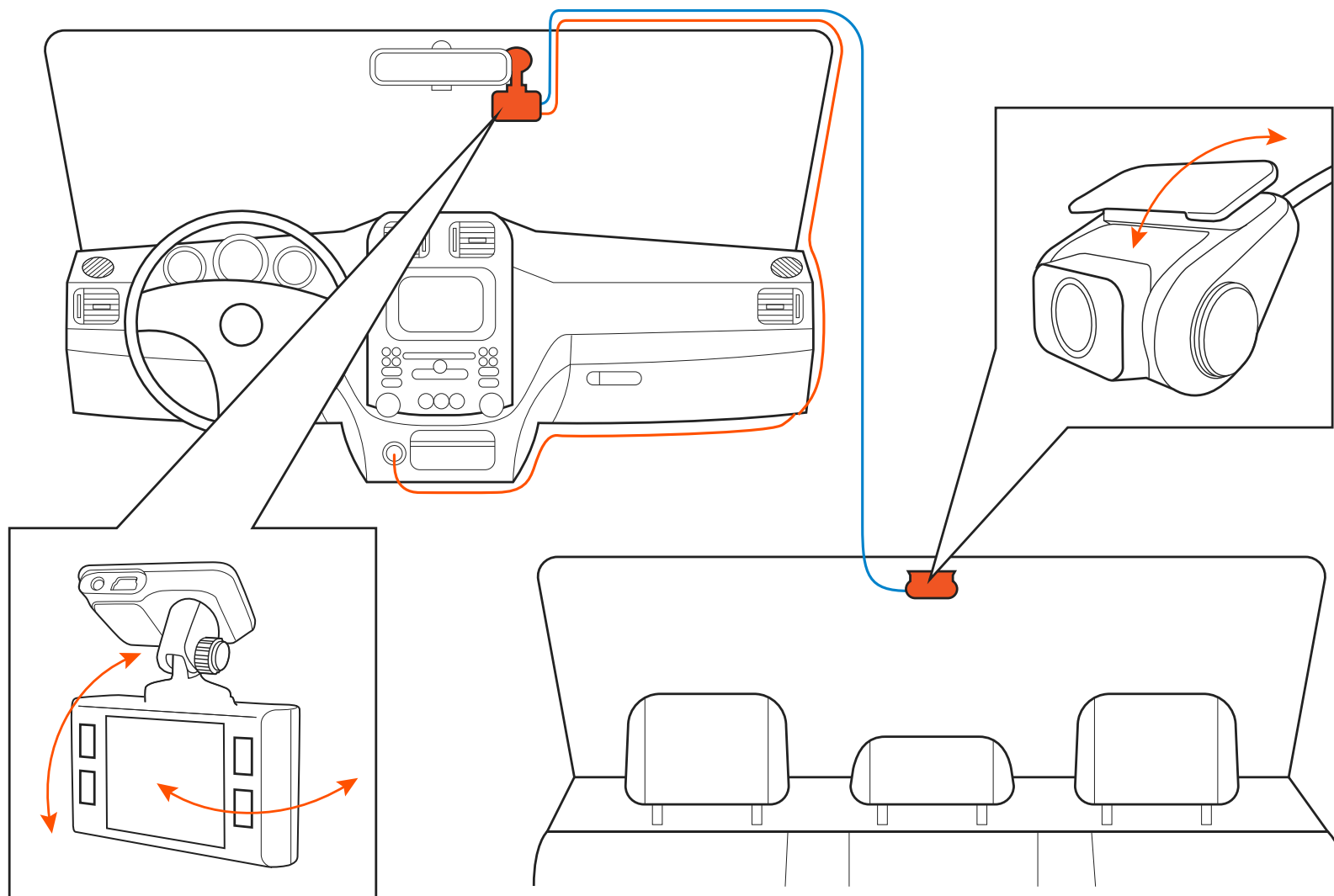


ATTENTION! Choose the installation location in advance, as the adhesive tape on the mount is of single use.

- 1** Ensure glass is dirt, dust, and grease free.
- 2** Warm adhesive pad part of mount in hands to ensure strong adhesion to glass.



To power the device, connect the power cable to the dash camera mount. When the vehicle's engine starts, the device turns on automatically.



ADJUSTING VIEWING ANGLE



ATTENTION! Adjusting the viewing angle can only be done along the vertical axis, so be sure to position the device correctly on the windshield along the horizontal axis as close as possible to the windshield's center.

While pulling or pushing the device in the holder, ensure that the camera captures the image in proportions of 30% sky / 70% road.



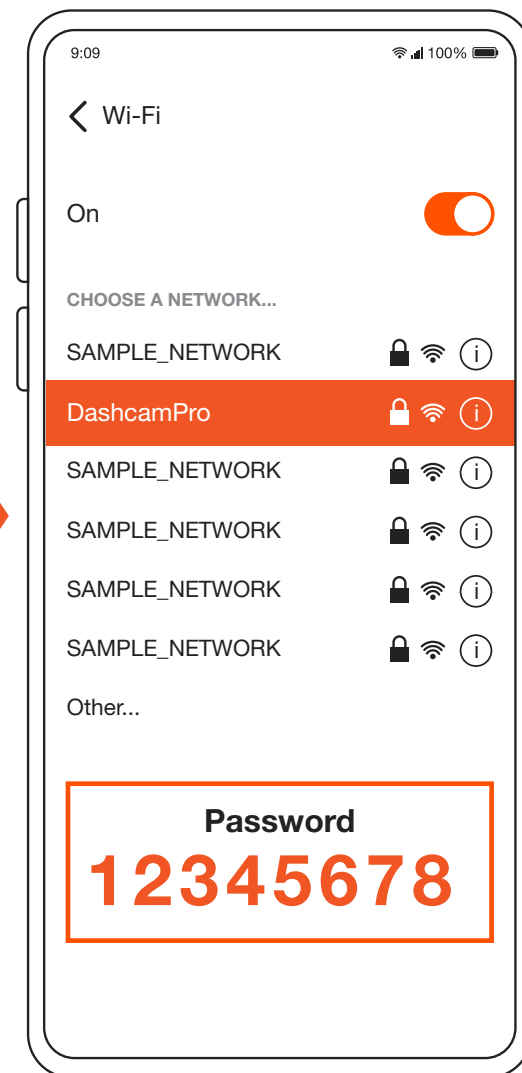
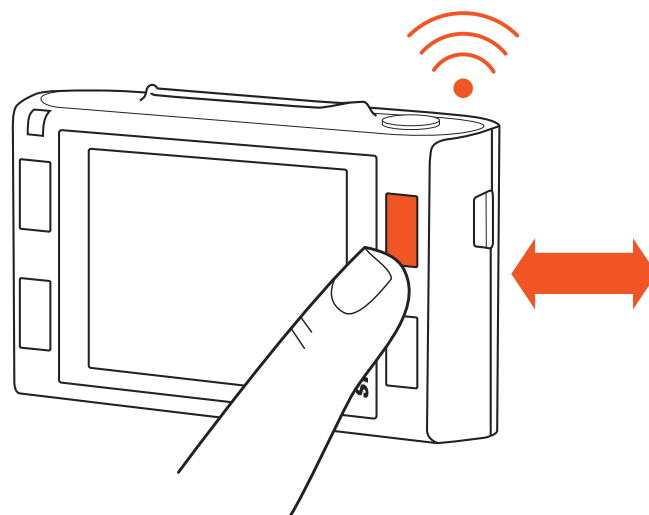
GOOD



BAD

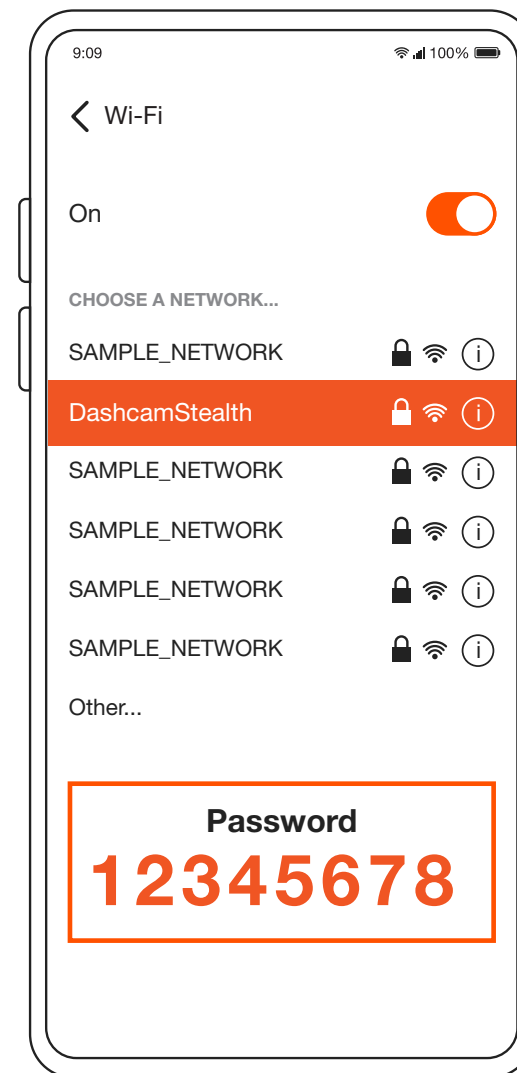
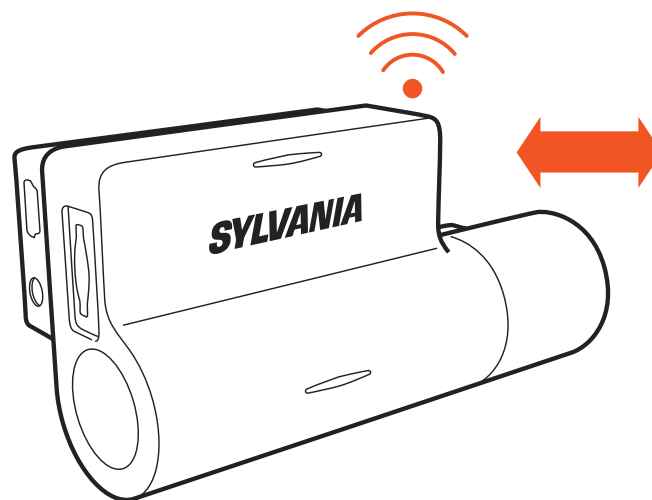
CONNECTING TO MOBILE: ROADSIGHT PRO DASH CAMERA

- 1** Hold down the power button to switch on the dash camera.
- 2** Press UP arrow for 3 seconds to open Wi-Fi hotspot details screen.
- 3** Open your phone's Settings.
- 4** Tap on Wi-Fi or Connections.
- 5** Select the dash camera hotspot and enter the password that is displayed on the dash camera.
- 6** You are now connected to your device.



CONNECTING TO MOBILE: ROADSIGHT STEALTH DASH CAMERA

- 1 Your camera automatically broadcasts a Wi-Fi network.
- 2 Open your phone's Settings.
- 3 Tap on Wi-Fi or Connections.
- 4 Select the dash camera hotspot and enter the password "12345678".
- 5 You are now connected to your device.



NEED MORE STORAGE SPACE?



[LEARN MORE](#)



[LEARN MORE](#)

POWER REQUIREMENTS



ATTENTION! Once there is no external power input, the battery cannot support recording for a long time, please make sure power supply is connected when recording.

Input voltage: 5VDC, 1.5A

Charging input voltage: 12-24VDC

Auxiliary cable for Power

OPERATING TEMPERATURES (all models)

Storage temperature: -4° F to 158° F (-20° C to 70° C)

Operating temperature: 14° F to 140° F (-10° C to 60° C)

PLEASE RECYCLE YOUR SPENT BATTERIES

Batteries should not be disposed of in unsorted municipal waste, but separately collected to facilitate the correct treatment and recycling of the substances they contain. The recycling of batteries ensures the recovery of these valuable materials and prevents any potentially harmful effects upon both the environment and human health.

FAILURE TO PHOTOGRAPH/RECORD VIDEO

Check if there is enough free space on the micro SD card.

RECORDING HAS STOPPED

Too many video files stored. Only use at least class 10 U1 high-speed micro SD cards by proven manufacturers.

When you try to view a photo/play a video file, the “wrong file” message appears.

File writing failure due to micro SD card file system error. Format the micro SD card.

BLURRED IMAGE

Ensure removal of lens sticker. Check for dirt on the lens. If there is any, wipe the lens with a soft cloth before use (it is recommended to use special care products for the optics in order not to damage the surface of the lens).