



Supply the original instrument model code and serial number when ordering

Instructions

Select the desired key number. The arrow to the right marks the selection available.
Make the desired selections from Tables I through VI using the column below the proper arrow. A dot (•) denotes availability.

Table	I	II	III	IV	V
XM71	- 4	-----	-----	- V -	-----

KEY NUMBER

KEY NUMBER	Description
XM71	

Selection Availability

Selection	Availability
XM71	↓

TABLE I

Level Meter Code
4

4	•
---	---

TABLE II

Approvals	Without ATEX II G/D 1, 1/2, 2 Ex ia IIC T6 ATEX II G/D 1/2, 2 Ex d ia IIC T6 FM IS Cl. I, II, III Div. 1,2 Gr. A-G Dual Seal FM XP Cl. I, II, III Div. 1,2 Gr. A-G Dual Seal ATEX II 3G Ex nA II T3...T6 INMETRO Cepel G/D 1/2, 2 Ex ia IIC T3...T6 INMETRO Cepel G/D 1/2, 2 Ex d[ia] IIC T3...T6 NEPSI Ex ia IIC T3...T6 NEPSI Ex dia IIC T3...T6 CSA IS Cl. I, II, III Div. 1,2 Gr. A-G + Dual seal CSA XP Cl. I, II, III Div. 2 Gr. A-G + Dual seal IECEx Zone 0 Ex ia IIC T3...T6, Ex iaD 20 IECEx Zone 0/1 Exd [ia] IIC T3...T6, Ex tD [iaD] A21/20	Approval selection must match the approval designation of the original meter
Material Process Connection and Probe	Without 316L / 1.4404 - 40 bar Hastelloy C-22 / 2.4602 - 40 bar 316L / 1.4404 - 100 bar Hastelloy C-22 / 2.4602 - 100 bar	
Probe	Without Single rod dia. 8 mm(0.31"); length 1 m (3.28') min. to 4 m (13.12') max. Double rod dia. 8 mm (0.31") ; length 1 m (3.28') min. to 4 m (13.12') max. Coax dia. 22 mm (0.87"); length 1 m (3.28') min. to 6 m (19.69') max. Single cable dia. 4 mm (0.16"); length 1m (3.28') min. to 35m(114.83') max. Single cable dia. 8 mm (0.31"); length 1 m (3.28') min. to 35 m (114.83') max. Double cable dia. 4 mm (0.16"); length 1 m (3.28') min. to 8 m (26.25') max. Single cable Ø 4 mm / 0.16 inch FEP coated (1mm) max. 35 m / 114.83 ft Segmented single rod Ø 8mm Segmented coax Ø 22mm	Probe lengths are available in 3.94" (100 mm) increments. Refer to Length table
Probe End Type	Without (rod & coax version) Counterweight 12 mm (0.47") x 100 mm (3.94"); Single cable 8 mm(0.31") Counterweight 38 mm (1.5") x 245 mm (9.65"); Single cable 8 mm (0.31") Counterweight 20 mm (0.79") x 100 mm (3.94"); Single cable 4 mm (0.16") Counterweight 38 mm (1.5") x 60 mm (2.36"); Double cable 4 mm (0.16") Turnbuckle Chuck Threaded end Crimped end Open end	Refer to probe table. Based on Material, Probe and Probe End Type, only add price once per the required combination
Feedthrough / Temperature / Sealing	Without Standard: -40°C (-40°F)...+200°C (392°F), 40 bar (580 psi) max. / FKM/FPM Standard: -20°C (-4°F)...+200°C (392°F), 40 bar (580 psi) max. / Kalrez 6375 Standard: -50°C (-58°F)...+150°C (302°F), / EPDM	

0	a
2	r
3	p
6	•
7	•
A	r
B	
C	
E	r
F	p
H	•
K	•
M	r
N	p
0	•
1	•
2	b
3	•
4	b
0	•
1	c
2	d
3	e
4	f
5	g
6	h
8	z
M	c
S	e
0	•
1	•
2	•
3	•
4	•
A	•
B	•
C	•
D	•
E	•
0	•
1	•
2	•
5	•

TABLE III	Description	Selection	Availability	
Process Connection EN	Without	000	•	
	G 3/4" A ISO229	100	•	
	G 1" A ISO228	200	•	
	G 1 1/2" A ISO228	300	•	
	DN 25 PN 40 Form B1 EN1092	400	•	
	DN 40 PN 40 Form B1 EN1092	500	•	
	DN 50 PN 40 Form B1 EN1092	600	•	
	DN 80 PN 40 Form B1 EN1092	700	•	
	DN 100 PN 16 Form B1 EN1092	800	•	
	DN 100 PN 40 Form B1 EN1092	A00	•	
	DN 150 PN 16 Form B1 EN1092	B00	•	
	DN 150 PN 40 Form B1 EN1092	C00	•	
	DN50 PN63 Form B1 EN1092	D00	•	
	DN80 PN63 Form B1 EN1092	E00	•	
	DN100 PN63 Form B1 EN1092	F00	•	
	DN25 PN63/PN100 Form B1 EN1092	K00	•	
	DN40 PN63/PN100 Form B1 EN1092	L00	•	
	DN50 PN100 Form B1 EN1092	M00	•	
	DN80 PN100 Form B1 EN1092	N00	•	
	DN100 PN100 Form B1 EN1092	P00	•	
DN150 PN63 Form B1 EN1092	R00	•		
DN150 PN100 Form B1 EN1092	S00	•		
Process Connection ASME	3/4" NPT	010	•	
	1" NPT	020	•	
	1 1/2" NPT	030	•	
	1" 150 lb RF ASME B16.5	040	•	
	1 1/2" 150 lb RF ASME B16.5	050	•	
	1 1/2" 300 lb RF ASME B16.5	060	•	
	2" 150 lb RF ASME B16.5	070	•	
	2" 300 lb RF ASME B16.5	080	•	
	3" 150 lb RF ASME B16.5	0A0	•	
	3" 300 lb RF ASME B16.5	0B0	•	
	4" 150 lb RF ASME B16.5	0C0	•	
	4" 300 lb RF ASME B16.5	0D0	•	
	6" 150 lb RF ASME B16.5	0E0	•	
	8" 150 lb RF ASME B16.5	0F0	•	
	6" 300 LBS RF ASME B16.5	0G0	•	
	1" 600LBS RF ASME B16.5	0M0	•	
	1" 1/2 600LBS RF ASME B16.5	0N0	•	
	2" 600LBS RF ASME B16.5	0P0	•	
	3" 600LBS RF ASME B16.5	0R0	•	
	4" 600LBS RF ASME B16.5	0S0	•	
	1" 900LBS/1500LBS RF ASME B16.5	0T0	•	
	1" 1/2 900LBS/1500LBS RF ASME B16.5	0U0	•	
	2" 900LBS/1500LBS RF ASME B16.5	0V0	•	
	3" 900LBS RF ASME B16.5	0W0	•	
	4" 900LBS RF ASME B16.5	0X0	•	
	Process Connection Other	10K 40A RF JIS B2220	005	•
		10K 50A RF JIS B2220	006	•
		10K 80A RF JIS B2220	007	•
10K 100A RF JIS B2220		008	•	
Electronic Module	Without	___0	•	
	Terminal module (Non-Ex or Ex i) + screws	___3	k	
	Backend (1 output) + High frequency module	___4	•	
	HMI cover + cable (Aluminium)	___5	m	
	Complete head with HMI (Aluminium)	___6	n	
	Complete head with blind cover (Aluminium)	___7	w	
	Complete head with HMI (Stainless steel)	___8	n	
	Complete housing with HMI + electronic module (Aluminium)	___A	n	
	Complete head with blind cover (Stainless steel)	___C	w	
	Complete housing with HMI + electronic module (Stainless steel)	___D	n	
Terminal module (Ex d) + screws	___E	x		
HMI cover + cable (Stainless steel)	___F	m		

TABLE IV

		Selection	Availability
Output	Without	0	•
	Output: 4...20mA (Hart)	1	•
	1 Output: 4...20mA (Hart) + Interface	2	•
	2 Outputs 4...20mA (Hart) + 4...20mA	3	•
	2 Outputs 4...20mA (Hart) + 4...20mA + Interface	4	•
	Foundation Fieldbus (4 wire + local Hart)	A	y
	Foundation Fieldbus (4 wire + local Hart) + Interface	B	y
HMI (display & keys)	Without	- 0	•
	English	- 1	•
	German	- 2	•
	French	- 3	•
	Italian	- 4	•
	Spanish	- 5	•
	Portugese	- 6	•
Version	Profibus PA (4 wire + local Hart)	- 7	•
	Profibus PA (4 wire + local Hart) + Interface	- 8	•
	Honeywell	- A	•
	Without	- V	•
	Stainless steel weather protection	- 0	•
	Cable entry M20x1,5 (ALU) M25x1,5 (SS) / without gland	- 1	•
	Screws + gaskets (kit for 1 unit)	- 2	•
Accessories	Wiring compartment cover + gasket	- 3	•
	Cable entry 1/2" NPT / without gland	- 4	•
	Cable entry G 1/2" / without gland (not for Sst housing)	- 5	•
	Cable entry M20x1,5 (ALU) M25x1,5 (SS) / plastic gland (Std: black, Ex ia:blue)	- 6	•
	Cable entry M20x1,5 (ALU) M25x1,5 (SS) / metal gland (Ex d devices only)	- 7	•
	Beige plastic sun shade	- 8	•
	Blind cover + gasket + screws	- A	•
	Converter VIATOR RS232 / HART	- B	•
	Converter USB / HART	- C	•
	ESD protection 30KV	- D	•
	Metaglas® sealing	- F	•
	Without	- G	•
	Housing Option	Remote Version / 2 m (2180mm; 6.56 ft.)	- 0
Remote Version / 4.5 m (4720 mm; 14.76 ft.)		- 3	s
Remote Version / 9.5 m (9800 mm; 31.17 ft.)		- 4	t
Remote Version / 14.5 m (14880 mm; 47.57 ft.)		- 5	u
		- 6	v

TABLE V

Probe Length	Ordered in 100mm increments, minimum length 1000mm	00	see length table
--------------	--	----	------------------

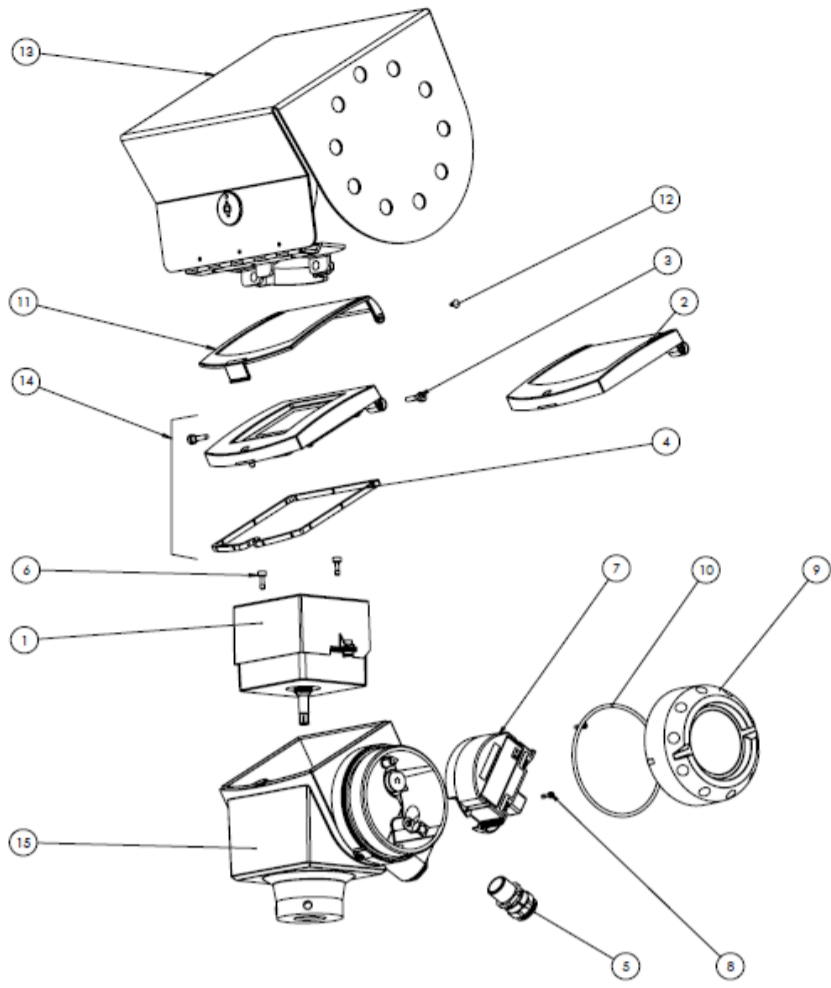
RESTRICTIONS

Restrictions	Available only with		Not Available with	
	Letter	Table Selection	Table	Selection
a			IV	___8_
b			II	___5_ , ___6_ , ___8_ , ___1_ , ___2_ , ___4_ , ___A_ , ___B_
c	II	___0_		
d	II	___0_	III	100_ , 200_ , 400_ , 500_ , K00_ , L00_ , 010_ , 020_ , 040_ , 050_ , 060_ , 0M0_ , 0N0_ , 0T0_ , 0U0_ , 005_
			IV	___F_
e	II	___0_	IV	___F_
f			II	___0_ , ___1_ , ___2_ , ___4_
g			II	_3_ , _4_ , ___0_ , ___3_ , ___4_ , ___5_
	IV	0_ , 1_ , 3_ , A_ , D_	III	100_ , 200_ , 400_ , K00_ , 010_ , 020_ , 040_ , 0M0_ , 0T0_
			IV	_5_ , _6_
h	II	___4_ , ___A_ , ___C_		
			III	100_ , 200_ , 400_ , 500_ , K00_ , L00_ , 010_ , 020_ , 040_ , 050_ , 060_ , 0M0_ , 0N0_ , 0T0_ , 0U0_ , 005_
			IV	___F_
k			II	3_ , 7_ , K_
			IV	0_
m			IV	_0_
n			IV	00_
p			IV	___7_ , ___F_
r			IV	___8_ , ___F_

Additional restrictions can be found on page 4

RESTRICTIONS

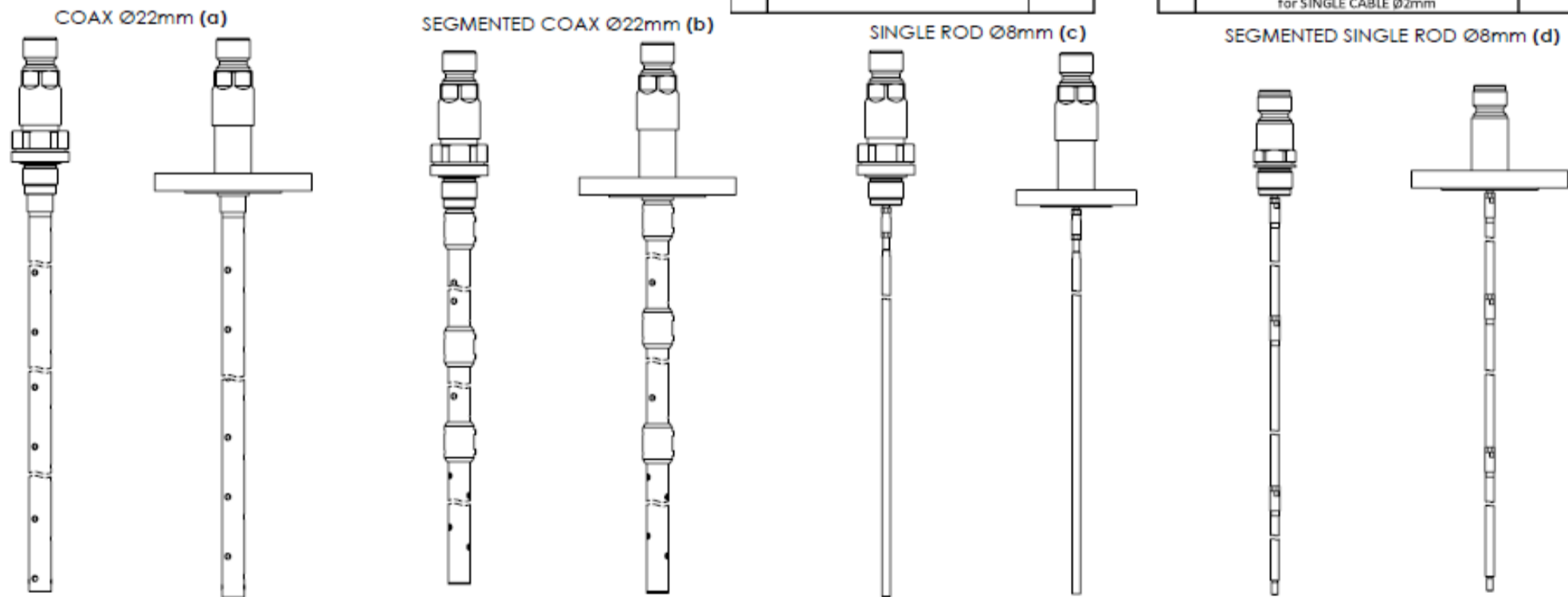
Restrictions		Available only with		Not Available with	
Letter	Table	Selection	Table	Selection	
s	II	__ 1 __, __ 2 __, __ M __			
	V	maximum probe length 4 m			
		or			
	II	__ 3 __, __ S __			
	V	maximum probe length 6 m			
		or			
	II	__ 6 __			
	V	maximum probe length 8 m			
t		or			
	II	__ 4 __, __ 5 __, __ 8 __			
	V	maximum probe length 30 m			
	II	__ 1 __, __ 2 __, __ M __			
	V	maximum probe length 4 m			
		or			
	II	__ 3 __, __ S __			
	V	maximum probe length 6 m			
u		or			
	II	__ 6 __			
	V	maximum probe length 8 m			
		or			
	II	__ 4 __, __ 5 __, __ 8 __			
	V	maximum probe length 25 m			
	II	__ 1 __, __ 2 __, __ M __			
	V	maximum probe length 4 m			
v		or			
	II	__ 3 __, __ S __			
	V	maximum probe length 6 m			
		or			
	II	__ 6 __			
	V	maximum probe length 8 m			
		or			
	II	__ 4 __, __ 5 __, __ 8 __			
V	maximum probe length 15 m				
w	II	__ 1 __, __ 2 __, __ M __			
	V	maximum probe length 4 m			
		or			
	II	__ 3 __, __ S __			
	V	maximum probe length 5 m			
		or			
	II	__ 6 __			
	V	maximum probe length 5 m			
x		or			
	II	__ 4 __, __ 5 __, __ 8 __			
	V	maximum probe length 5 m			
	II	__ 4 __, __ 5 __, __ 8 __			
	V	maximum probe length 5 m			
	IV	0 ____			
	II	3 ____, 7 ____, K ____	IV	0 ____	
	II	0 ____			
II	__ 1 __, __ 2 __	II	__ 0 __, __ 1 __, __ 2 __, __ 4 __, __ A __, __ B __		



Rep.	Reference	Description	Quantity
1	400659401	ELECTRONIC MODULE	1
2	F3177240100	BLIND COVER	1
3	F3177340000	SCREWS FOR COVER	2
4	F3177420000	COVER GASKET	1
5	VOIR TABLEAU 1	CABLE GLAND	1
6	F3177360100	SCREW FOR BACK END ELECTRONIC	2
7	VOIR TABLEAU 2	TERMINAL MODULE	1
8	F3177350000	SCREWS FOR TERMINAL MODULE	2
9	F3177260100	WIRING COMPARTMENT COVER	1
10	F5091150000	WIRING COMPARTMENT COVER SEAL	1
11	F3179980000	BLUE PLASTIC SUN SHADE	1
12	F3179990000	PINS FOR PLASTIC SUN SHADE	2
13	F2096340000	STAINLESS STEEL WEATHER PROTECTION	1
14	XF7140000000500100	HMI COVER AND CABLE (OF 1300)	1
15	F3177280100	HOUSING BODY	1

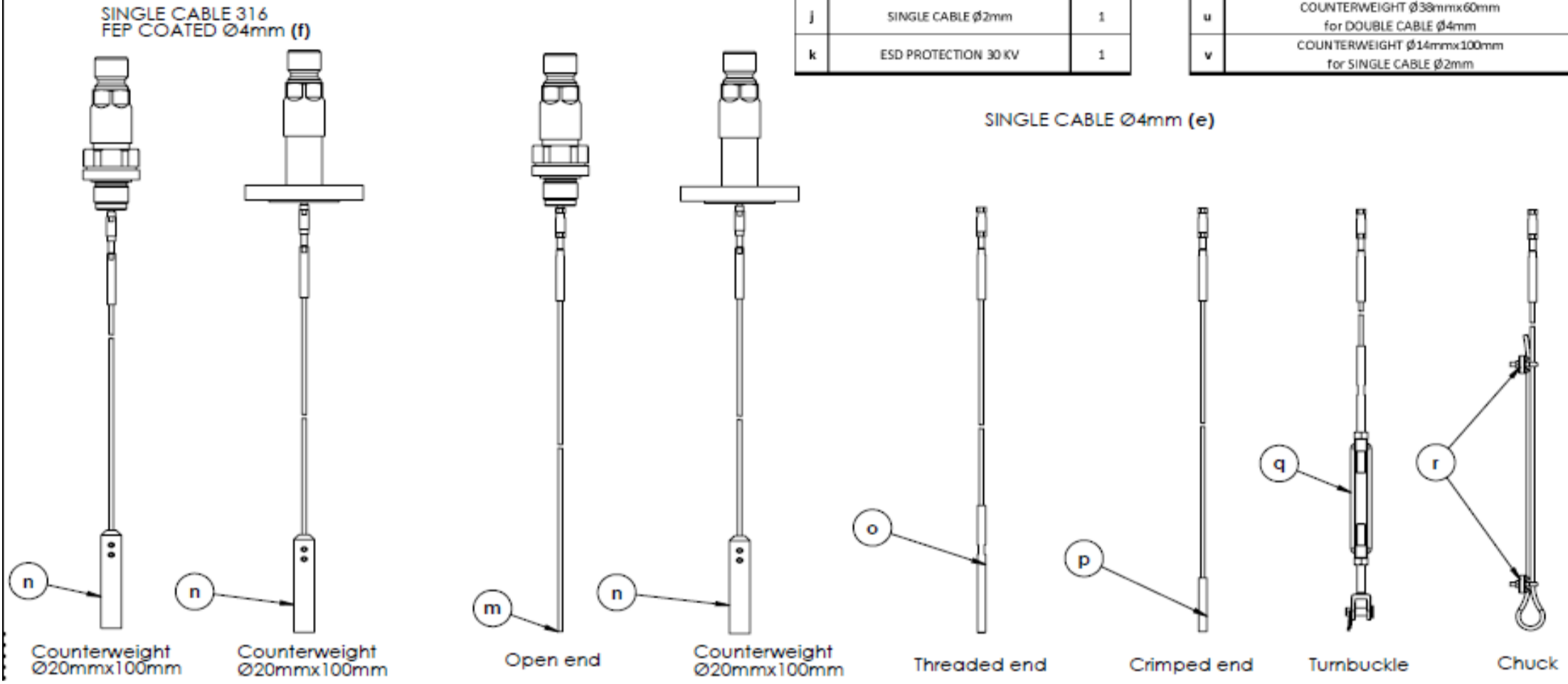
Rep.	Description	Quantity
a	COAX Ø22mm	1
b	SEGMENTED COAX Ø22mm	1
c	SINGLE ROD Ø8mm	1
d	SEGMENTED SINGLE ROD Ø8mm	1
e	SINGLE CABLE Ø4mm	1
f	SINGLE CABLE 316 FEP COATED Ø4mm	1
g	SINGLE CABLE Ø8mm	1
h	DOUBLE CABLE Ø4mm	1
i	DOUBLE ROD Ø8mm	1
j	SINGLE CABLE Ø2mm	1
k	ESD PROTECTION 30 KV	1

Rep.	Description	Quantity
l	METAGLAS SEALING	1
m	OPEN END SINGLE CABLE Ø4mm OR Ø8mm	1
n	COUNTERWEIGHT Ø20mmx100mm for SINGLE CABLE Ø4mm	1
o	THREADED END for SINGLE CABLE	1
p	CRIMPED END for SINGLE CABLE	1
q	TURNBUCKLE for SINGLE CABLE	1
r	CHUCK for SINGLE CABLE	1
s	COUNTERWEIGHT Ø12mmx100mm for SINGLE Ø8mm	1
t	COUNTERWEIGHT Ø38mmx245mm for SINGLE Ø8mm	1
u	COUNTERWEIGHT Ø38mmx60mm for DOUBLE CABLE Ø4mm	1
v	COUNTERWEIGHT Ø14mmx100mm for SINGLE CABLE Ø2mm	1



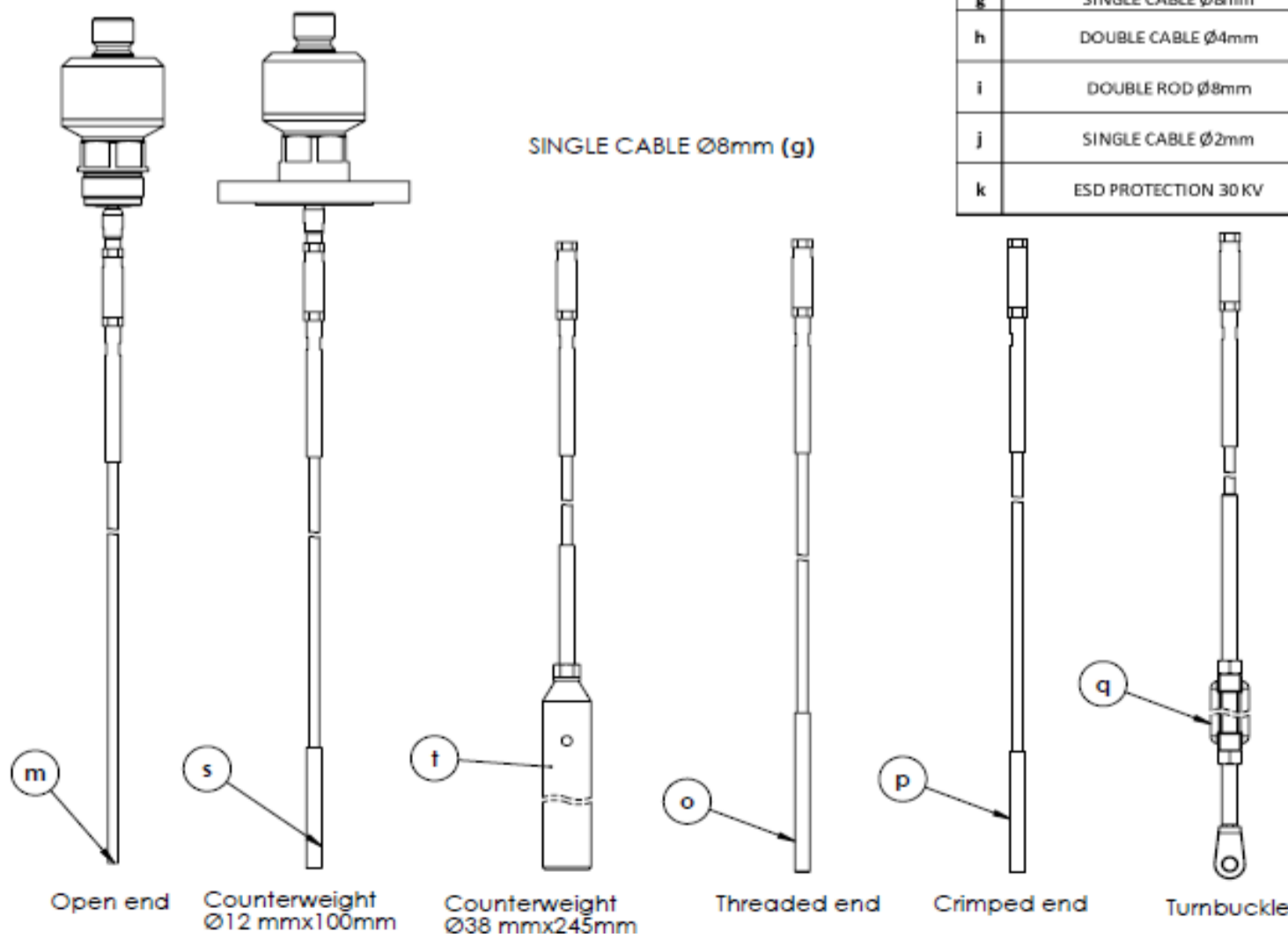
Rep.	Description	Quantity
a	COAX Ø22mm	1
b	SEGMENTED COAX Ø22mm	1
c	SINGLE ROD Ø8mm	1
d	SEGMENTED SINGLE ROD Ø8mm	1
e	SINGLE CABLE Ø4mm	1
f	SINGLE CABLE 316 FEP COATED Ø4mm	1
g	SINGLE CABLE Ø8mm	1
h	DOUBLE CABLE Ø4mm	1
i	DOUBLE ROD Ø8mm	1
j	SINGLE CABLE Ø2mm	1
k	ESD PROTECTION 30 KV	1

Rep.	Description	Quantity
l	METAGLAS SEALING	1
m	OPEN END SINGLE CABLE Ø4mm OR Ø8mm	1
n	COUNTERWEIGHT Ø20mmx100mm for SINGLE CABLE Ø4mm	1
o	THREADED END for SINGLE CABLE	1
p	CRIMPED END for SINGLE CABLE	1
q	TURNBUCKLE for SINGLE CABLE	1
r	CHUCK for SINGLE CABLE	1
s	COUNTERWEIGHT Ø12mmx100mm for SINGLE Ø8mm	1
t	COUNTERWEIGHT Ø38mmx245mm for SINGLE Ø8mm	1
u	COUNTERWEIGHT Ø38mmx60mm for DOUBLE CABLE Ø4mm	1
v	COUNTERWEIGHT Ø14mmx100mm for SINGLE CABLE Ø2mm	1

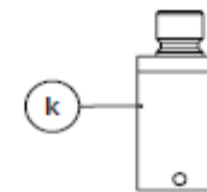


Rep.	Description	Quantity
a	COAX Ø22mm	1
b	SEGMENTED COAX Ø22mm	1
c	SINGLE ROD Ø8mm	1
d	SEGMENTED SINGLE ROD Ø8mm	1
e	SINGLE CABLE Ø4mm	1
f	SINGLE CABLE 316 FEP COATED Ø4mm	1
g	SINGLE CABLE Ø8mm	1
h	DOUBLE CABLE Ø4mm	1
i	DOUBLE ROD Ø8mm	1
j	SINGLE CABLE Ø2mm	1
k	ESD PROTECTION 30 KV	1

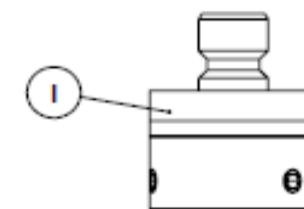
Rep.	Description	Quantity
l	METAGLAS SEALING	1
m	OPEN END SINGLE CABLE Ø4mm OR Ø8mm	1
n	COUNTERWEIGHT Ø20mmx100mm for SINGLE CABLE Ø4mm	1
o	THREADED END for SINGLE CABLE	1
p	CRIMPED END for SINGLE CABLE	1
q	TURNBUCKLE for SINGLE CABLE	1
r	CHUCK for SINGLE CABLE	1
s	COUNTERWEIGHT Ø12mmx100mm for SINGLE Ø8mm	1
t	COUNTERWEIGHT Ø38mmx245mm for SINGLE Ø8mm	1
u	COUNTERWEIGHT Ø38mmx60mm for DOUBLE CABLE Ø4mm	1
v	COUNTERWEIGHT Ø14mmx100mm for SINGLE CABLE Ø2mm	1



ESD PROTECTION 30KV (k)



METAGLAS SEALING (l)



Rep.	Description	Quantity
a	COAX Ø22mm	1
b	SEGMENTED COAX Ø22mm	1
c	SINGLE ROD Ø8mm	1
d	SEGMENTED SINGLE ROD Ø8mm	1
e	SINGLE CABLE Ø4mm	1
f	SINGLE CABLE 316 FEP COATED Ø4mm	1
g	SINGLE CABLE Ø8mm	1
h	DOUBLE CABLE Ø4mm	1
i	DOUBLE ROD Ø8mm	1
j	SINGLE CABLE Ø2mm	1
k	ESD PROTECTION 30KV	1

Rep.	Description	Quantity
l	METAGLAS SEALING	1
m	OPEN END SINGLE CABLE Ø4mm OR Ø8mm	1
n	COUNTERWEIGHT Ø20mmx100mm for SINGLE CABLE Ø4mm	1
o	THREADED END for SINGLE CABLE	1
p	CRIMPED END for SINGLE CABLE	1
q	TURNBUCKLE for SINGLE CABLE	1
r	CHUCK for SINGLE CABLE	1
s	COUNTERWEIGHT Ø12mmx100mm for SINGLE Ø8mm	1
t	COUNTERWEIGHT Ø38mmx245mm for SINGLE Ø8mm	1
u	COUNTERWEIGHT Ø38mmx60mm for DOUBLE CABLE Ø4mm	1
v	COUNTERWEIGHT Ø14mmx100mm for SINGLE CABLE Ø2mm	1

DOUBLE CABLE Ø4mm (h)

DOUBLE ROD Ø8mm(i)

