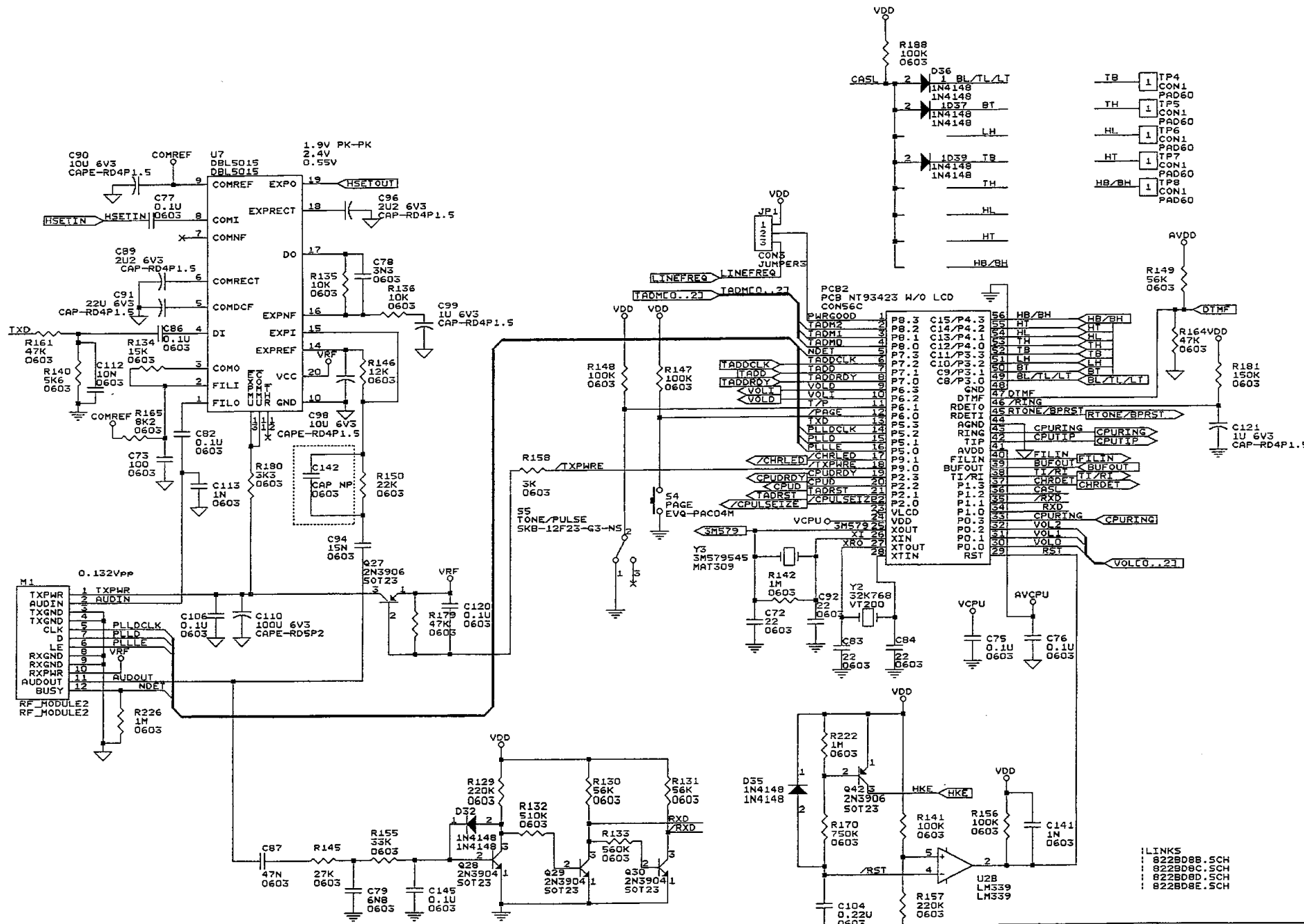


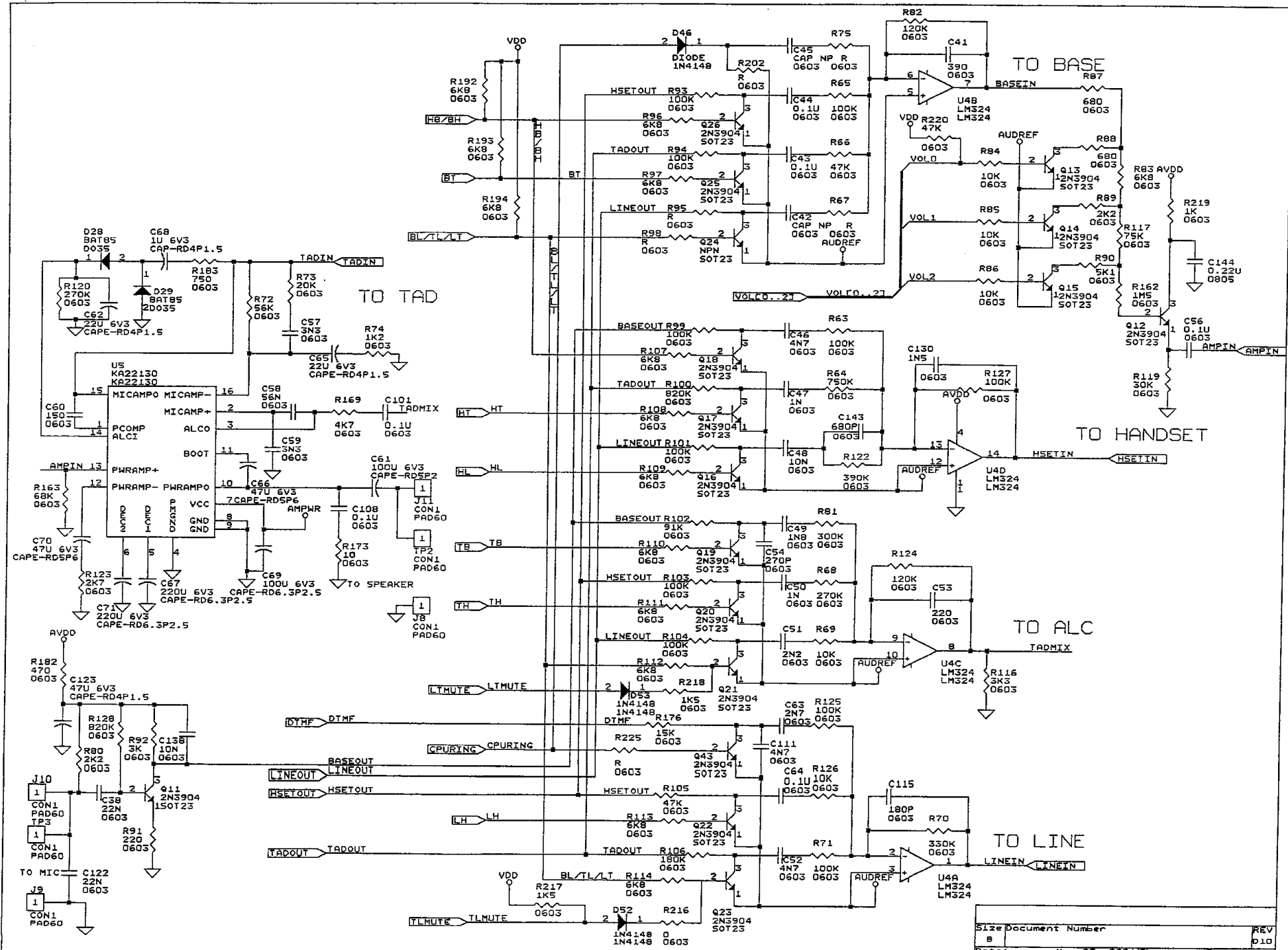
REV.	DESCRIPTION	CH'G BY	DATE
D1	NEW RELEASE	QUINCY	25 OCT.,00
D2	CPU PWR CHG. <span style="float:right">*1ST PCB SAMPLE*</span>	QUINCY	10 JAN.,00
D3	CORRECT RF MODULE PIN ASSIGNMENT. TAD LED AND BATT DET PIN CHG. CORRECT MUTE CONTROL LOGIC LEVEL. ADD 30K TO PWR AMP INPUT. CHG TADRST CCT BY CPU (WATCH DOG PROBLEM). CORRECT 50/50 DET CCT. CHG D28-29 TO LOW DROP DIODE. ADD RESISTOR TO DTMF OUTPUT. VOL. CONTROL CCT CHG. CORRECT ALC CCT. CHG PWR SUPPLY CCT. CHG PWR DOWN SIGNAL CCT. CHG CPU RST CCT. ADD CAP TO VREF.	QUINCY	5 MAR.,00
D4	FINE TURN VALUE.		
D5	CHG VOX CCT. ADD R & C FOR RF PWR LINE NOISE. ADD CAP TO DTMF DECODER. CHG MIC POWER TO VADD. ADD TAD AUD OUTPUT AMPLITUDE CONTROL CCT. CHG CAS DET. CCT. ADD OPTION SELECT CCT. CHG TAD RING DET CCT. ADD PREAMP FOR LINEOUT SIGNAL.	QUINCY	9 MAR.,00
D6	FIX BAT LOW DET VALUE. CHG VOX VALUE. CHG TAD ADPCM CCT VALUE. CHG TAD OUT BUF I/P RESISTOR. FIX R14. CHG HYB CCT. VALUE. CHG LINE OUT BUF VALUE. CHG C78 VALUE. FIX BASE,TAD FILTER VALUE. CHG ALC VALUE.	KS,SHING	3 APR 01
D7	Add filters for TAD. CHG LSeize CCT & logic. CHG data shaper PWR. RF PWR CCT CHG. CHG RST constant. CHG TAD RST CCT. CHG CPU ring CCT. TAD PWR CCT. CHG. CPU RING DET RC CHG. RING DET CCT VALUE CHG. MIC AMP add filter. CHG PWR AMP CCT. value. CHG Comander value.	MARTIN,QUINCY, KS	9 APR.,01
D8	DEL. OTP CPU. CHG ALC VALUE. ADD TAD PWM PIN. SWAP 2/4/T SWITCH CON. ADJ. TAD ADPCM CCT VALUE. SEPERATE CID BLOCK. CHG BATTERY CHARGE CCT. DEL. OTP. ADD FILTER TO RING DET. CCT. 3rd SAMPLE WITH REMORK FOR PR.	QUINCY	23 APR.,01
D9	FINE TURN SIDE TONE. FINE TURN ACOUSTIC. CHANGE TAD FILTER VALUE. FIX BRANCH PHONE RESET FUNCTION. CHANGE CPU RST TRIGGER VOLTAGE. CHANGE TAD RST CCT. ADD DISCHARGE CCT FOR TAD.	QUINCY,KS MARTIN	3 MAY 01
D9P	ONLY SHOW CCT IN PR. ADJ TAD IN/OUT FILTER. CHANGE CPU HOOKING CCT.	QUINCY	7 MAY 01
D9P1	FINE TURN TAD TO LINE & HANDSET PATH. FINE TURN VOX LEVEL. FINE TURN DTMF DECODER.	QUINCY	9 MAY 01

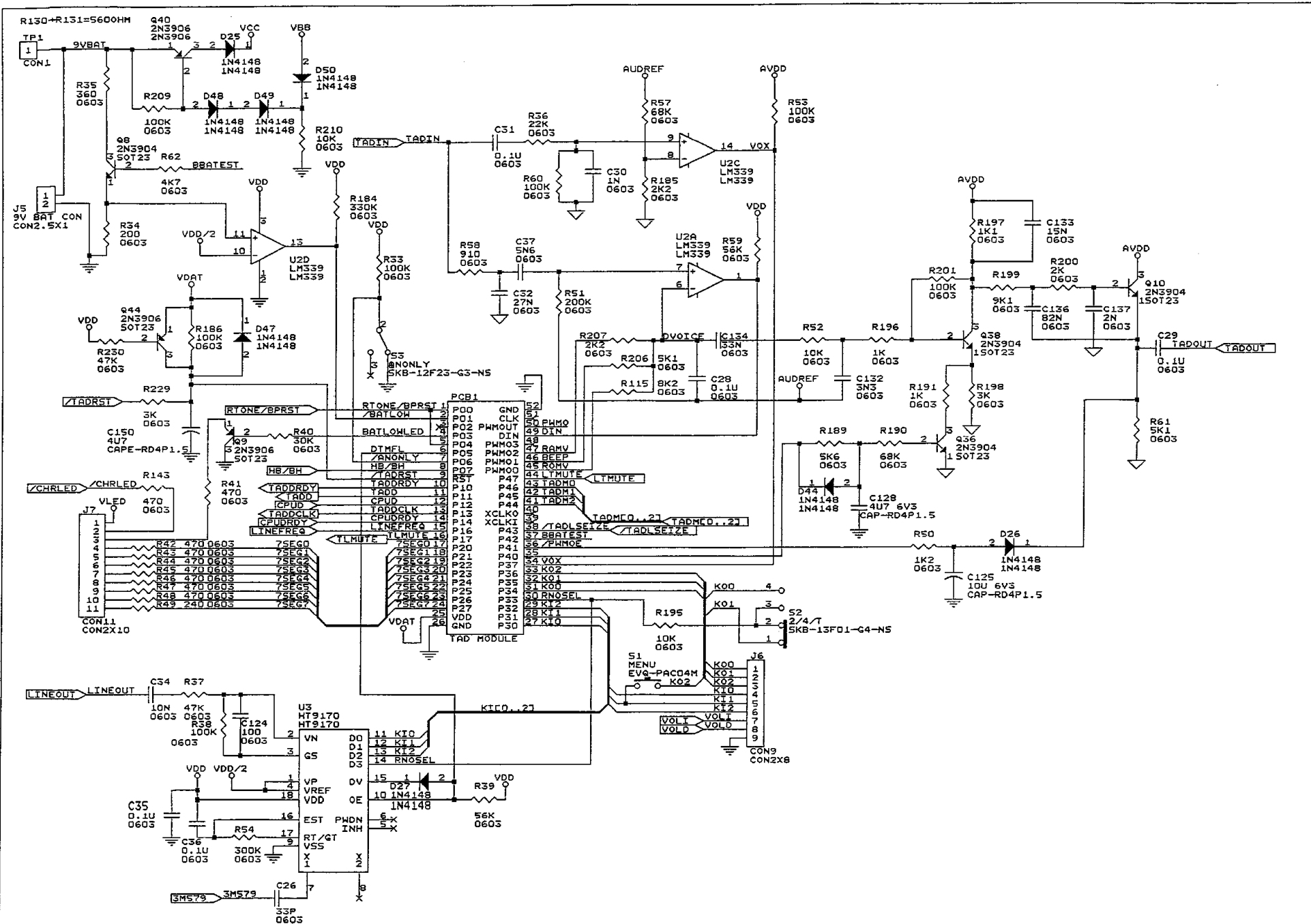
CPU	TAD	LINE & PWR
822B08A.SCH MIXER	822B08C.SCH CIDINTF	822B08E.SCH
822B08B.SCH	822B08D.SCH	

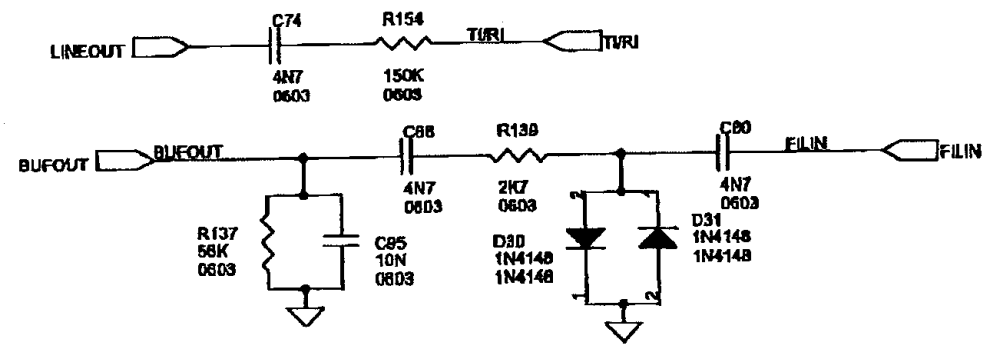
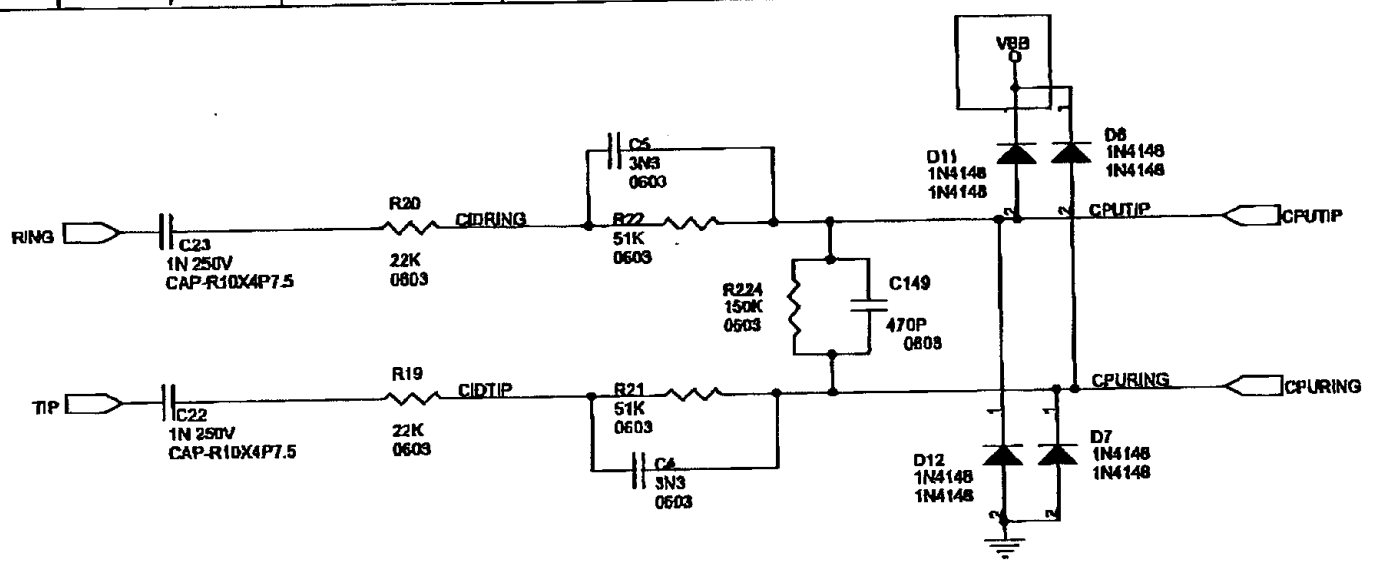
Title		
822 BASE		
Size	Document Number	REV
B		010
Date:	May 20, 2001	Sheet of 6



- !LINKS
- ! 822B08B.SCH
- ! 822B08C.SCH
- ! 822B08D.SCH
- ! 822B08E.SCH

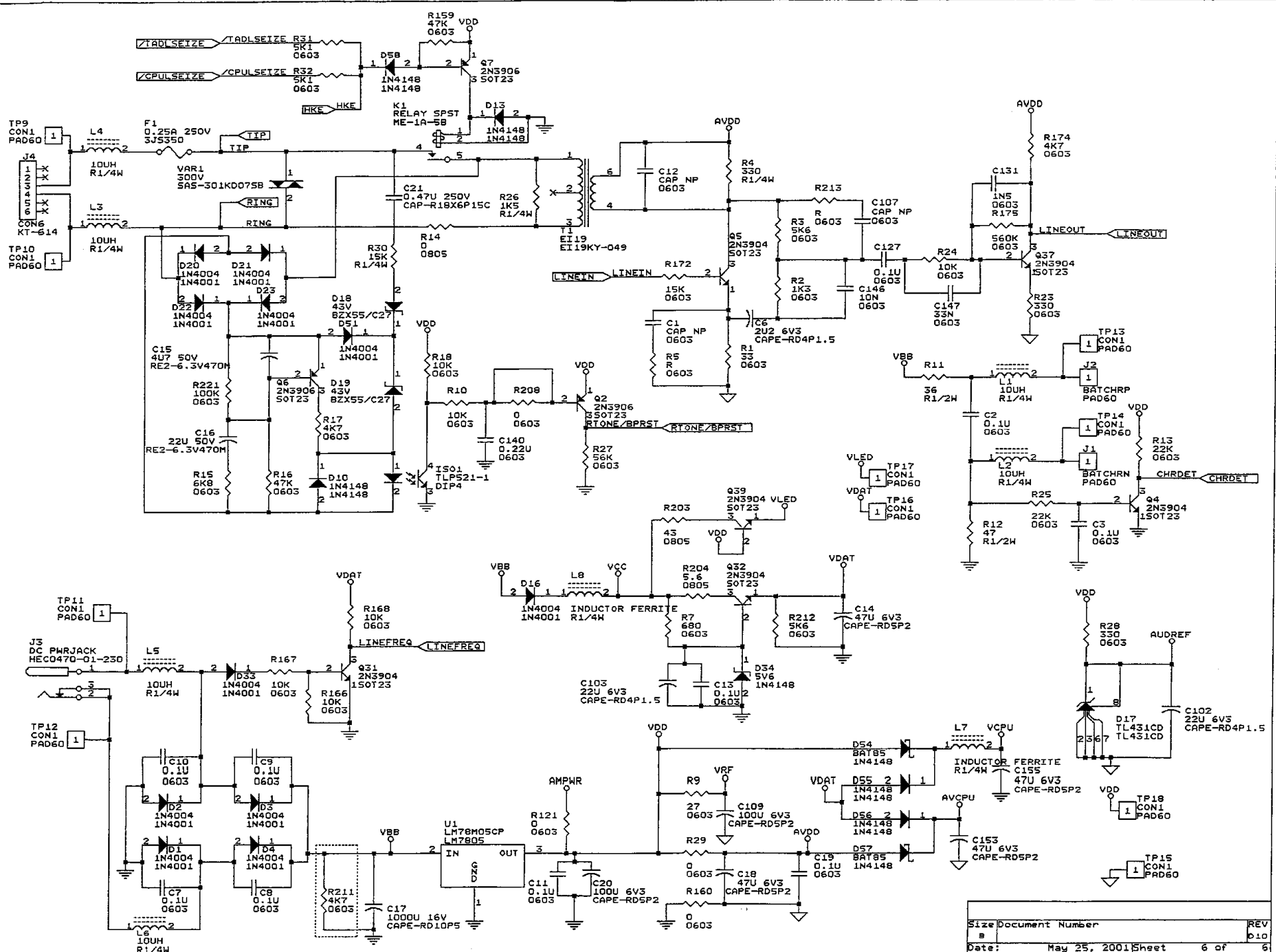






ETL SEMKO DIVISION	
Incoming Date: 13/6/01	Action By: Angela

Title	CID	
Size	Document Number	REV D12
Date:	Thursday, June 07, 2001	Sheet 5 of 6



REV.	DESCRIPTION	CH'G BY	DATE
D1	NEW RELEASE	QUINCY	27 NOV.,00
D2	CORRECT BATLOW LABEL.	QUINCY	27 NOV.,00
I	1st PCB.	QUINCY	18 JAN.,01
1A	CHG COMPANOR PWR TO RXPWR. REDEFINE 5015 LIB PIN NAME. CHG LABEL LOGIC LEVEL.	QUINCY	31 JAN.,01
1B	CHG COMPANDOR BUFFER CCT. CHANGE TXD C.C.T. CHG SWITCH PARTYPE.	QUINCY	14MAR.,01
1C	ADD RESISTOR BEFORE MIC. CHG MIC PWR SUPPLY CCT. CHG RING ON/OFF SWITCH CON.	QUINCY	16MAR.,01
1D	ADD TEST POINT. ADD ZENER TO CHARGE INPUT. 2nd PCB SAMPELS.	KS, SHING	16MAR.,01
1E	FINE TURN IN PP. 3rd PCB SAMPELS.	KS,QUINCY	26MAR.,01
1F	FINE TURN. COMPANDOR CCT CHANGE. CHG BAT DET CCT AS 2ND SAMPLE. CHG RECEIVER AMP PWR. CHG MIC INPUT CCT. 4th PCB SAMPELS.	MARTIN,QUINCY, KS	27APR.,01
1G	CHG DATA SLIDER CCT. CORRECT LOW BAT. DET VALUE. ADD CAP TO MIC AND RECEIVER.	KS	
1H			20 May 01

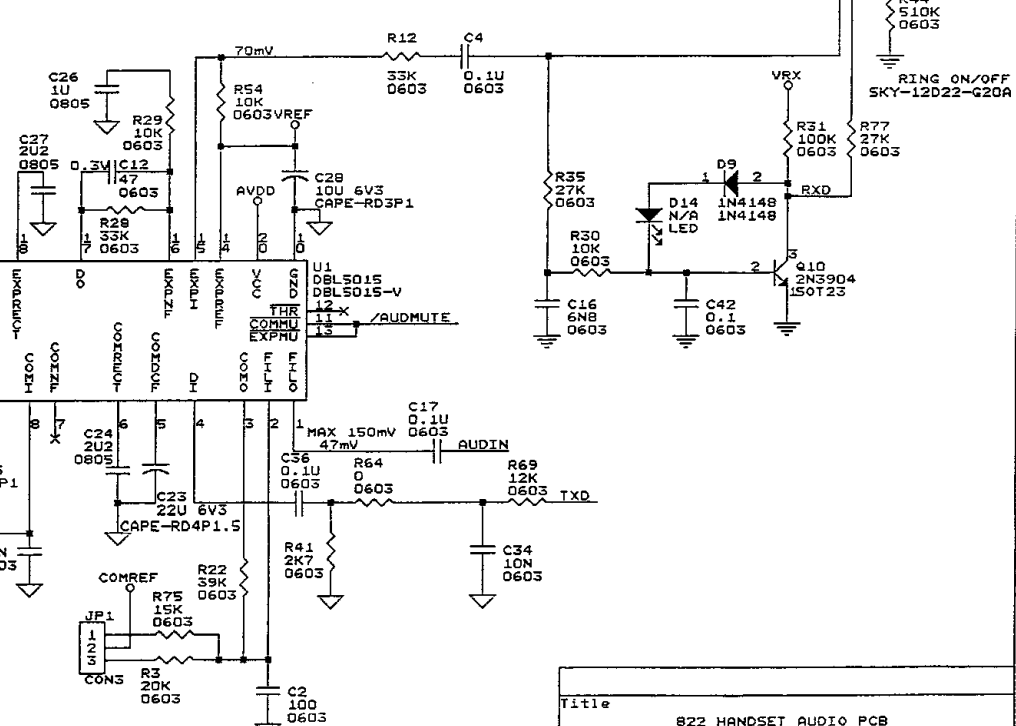
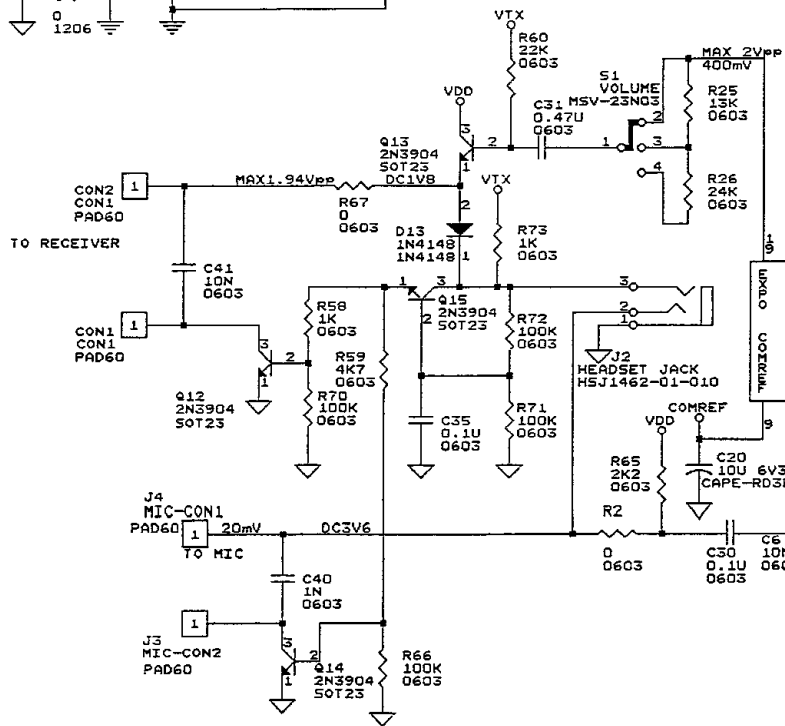
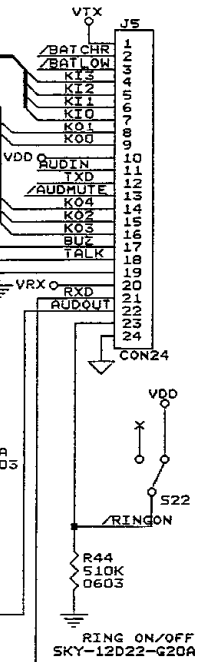
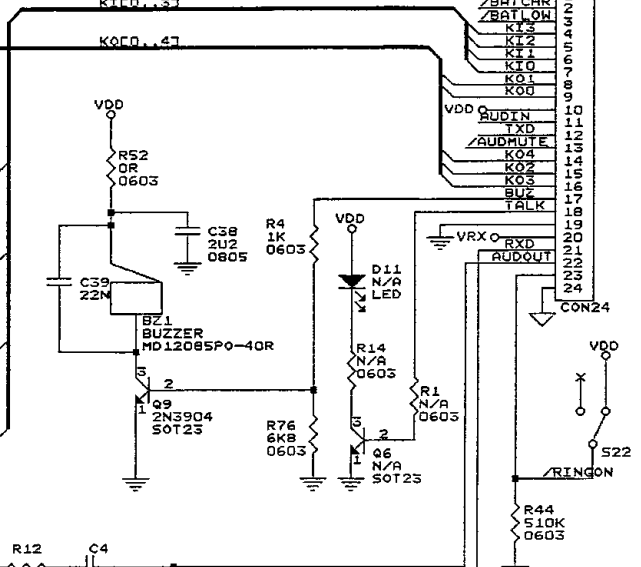
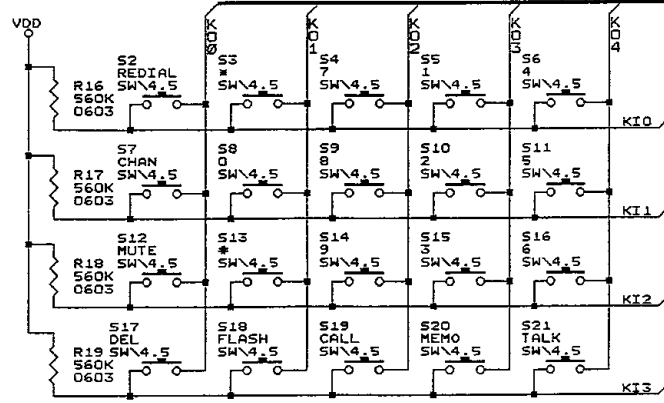
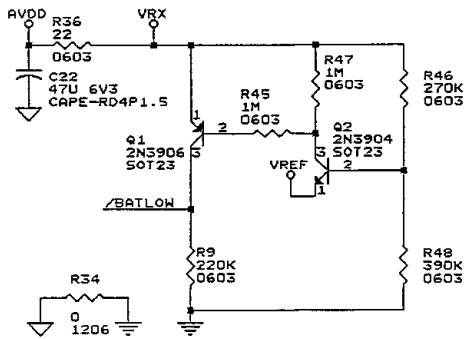
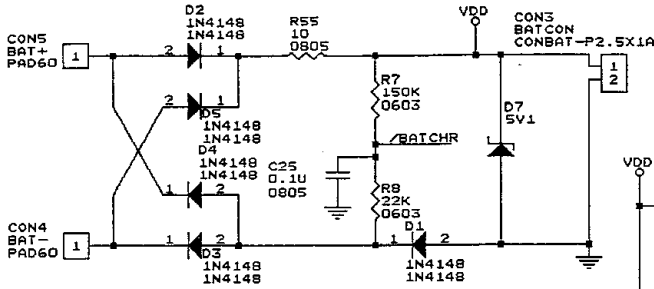
HANDSET KEYPAD



822A1H1.SCH

Title		822 HANDSET AUDIO PCB	
Size	Document Number	REV	
#		1H	
Date:	May 20, 2001	Sheet	1 of 2

TO CHARGE CONTACT

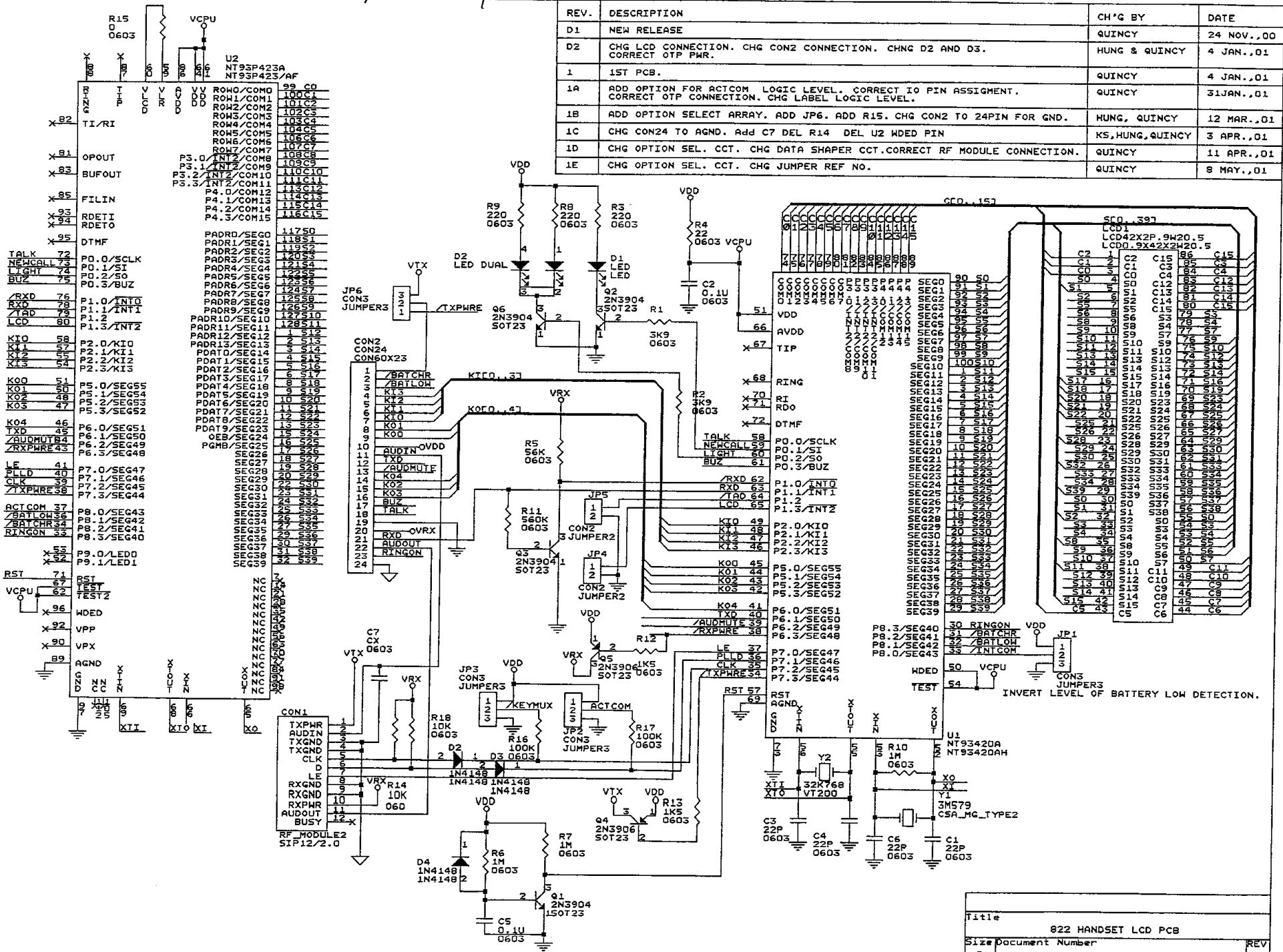


Title	822 HANDSET AUDIO PCB
Size Document Number	
REV	1H
Date:	May 20, 2001 Sheet 1 of 2



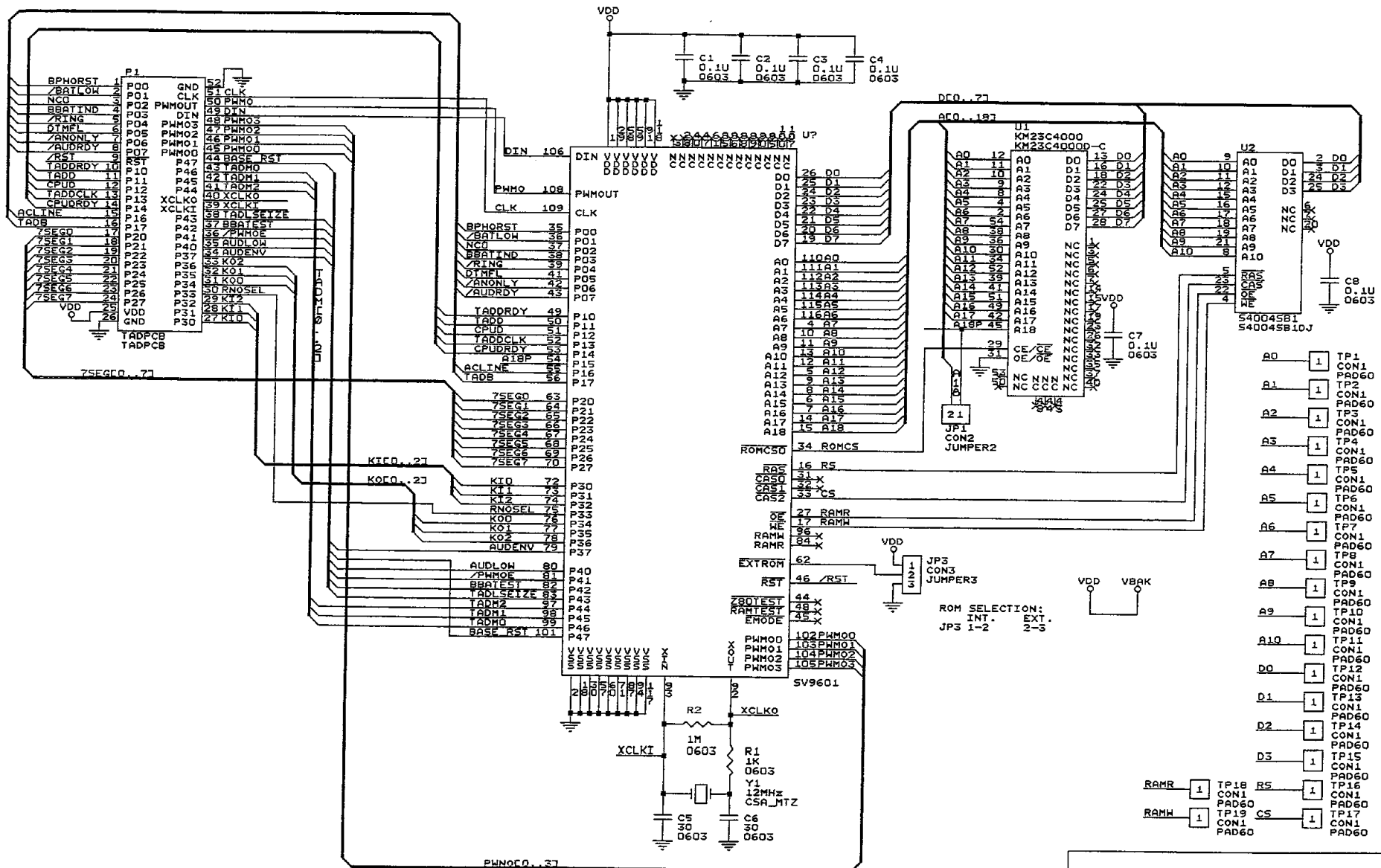
update 29/5

REV.	DESCRIPTION	CH'G BY	DATE
D1	NEW RELEASE	QUINCY	24 NOV.,00
D2	CHG LCD CONNECTION. CHG CON2 CONNECTION. CHNG D2 AND D3.	HUNG & QUINCY	4 JAN.,01
1	1ST PCB.	QUINCY	4 JAN.,01
1A	ADD OPTION FOR ACTICOM LOGIC LEVEL. CORRECT IO PIN ASSIGNMENT.	QUINCY	31JAN.,01
1B	ADD OPTION SELECT ARRAY. ADD JP6. ADD R15. CHG CON2 TO 24PIN FOR GND.	HUNG, QUINCY	12 MAR.,01
1C	CHG CON24 TO AGND. Add C7 DEL R14 DEL U2 WDED PIN	KS,HUNG,QUINCY	3 APR.,01
1D	CHG OPTION SEL. CCT. CHG DATA SHAPER CCT.CORRECT RF MODULE CONNECTION.	QUINCY	11 APR.,01
1E	CHG OPTION SEL. CCT. CHG JUMPER REF NO.	QUINCY	8 MAY.,01

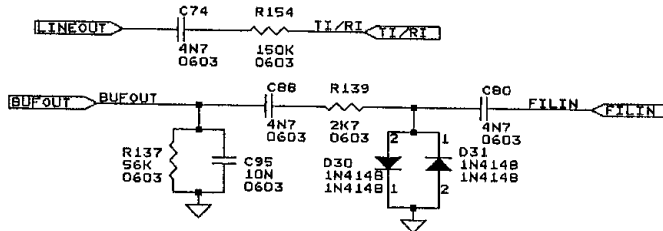
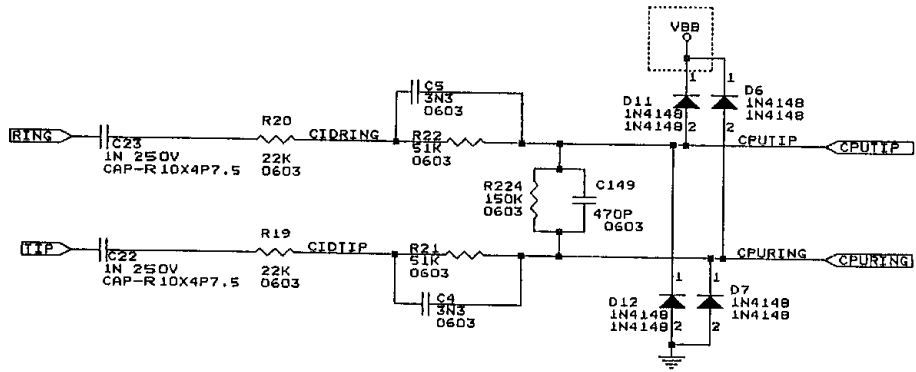


- R15 0603
- VDCPU
- U2 NT934220A NT934200A NT934223AF
- 99 CO
- 100C1
- 101C2
- 102C3
- 103C4
- 104C5
- 105C6
- 106C7
- 107C8
- 108C9
- 109C10
- 110C11
- 111C12
- 112C13
- 113C14
- 114C15
- 115C16
- 116C17
- 117C18
- 118C19
- 119C20
- 120C21
- 121C22
- 122C23
- 123C24
- 124C25
- 125C26
- 126C27
- 127C28
- 128C29
- 129C30
- 130C31
- 131C32
- 132C33
- 133C34
- 134C35
- 135C36
- 136C37
- 137C38
- 138C39
- 139C40
- 140C41
- 141C42
- 142C43
- 143C44
- 144C45
- 145C46
- 146C47
- 147C48
- 148C49
- 149C50
- 150C51
- 151C52
- 152C53
- 153C54
- 154C55
- 155C56
- 156C57
- 157C58
- 158C59
- 159C60
- 160C61
- 161C62
- 162C63
- 163C64
- 164C65

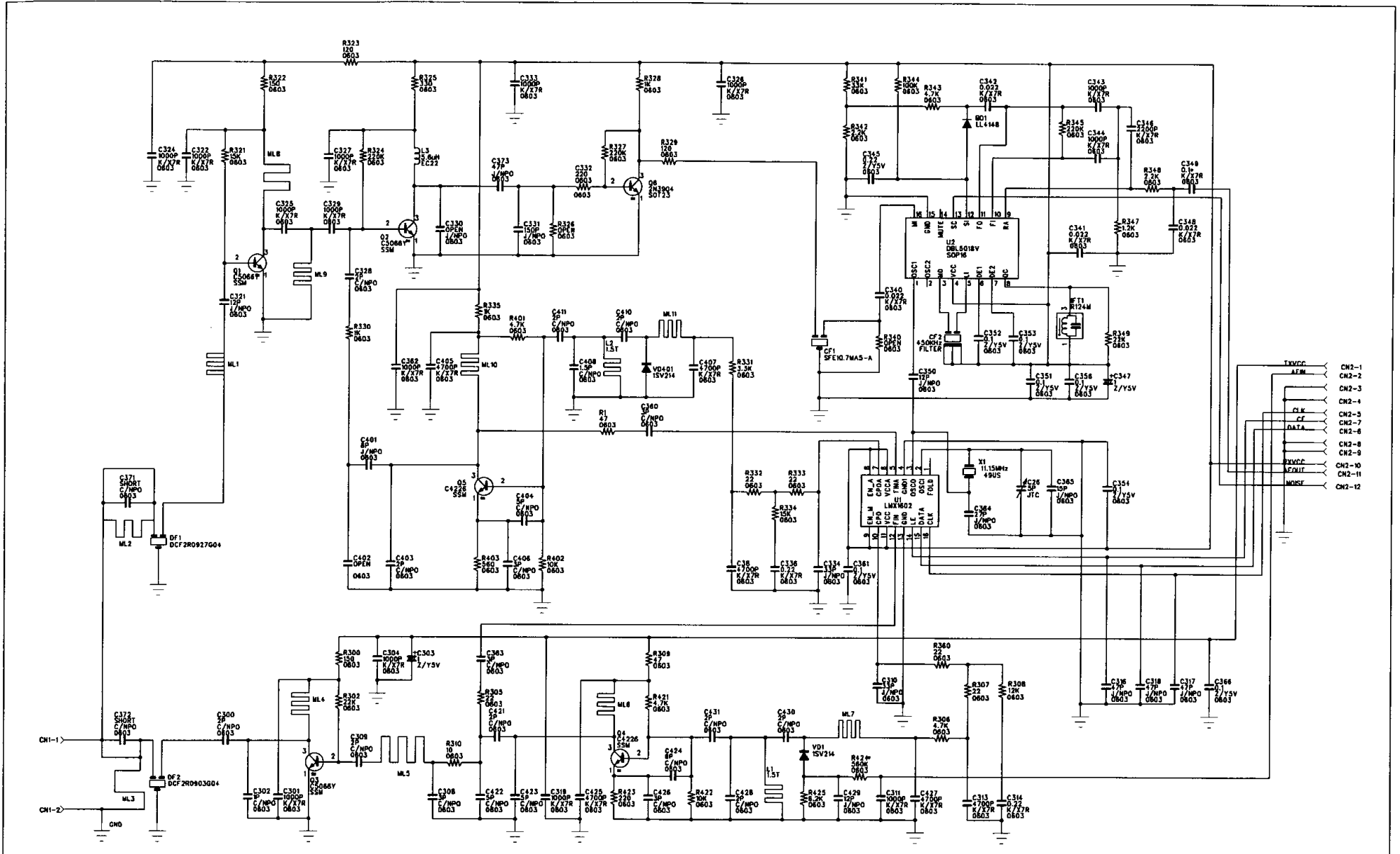
REV.	DESCRIPTION	CH'G BY	DATE
D1	NEW RELEASE	QUINCY	27 NOV.,00
D2	CORRECT ASIC LIB PIN NAME.	QUINCY	23 JAN.,01
D3	BATT LOW DET PORT CHG (NO CON. CHG).	QUINCY	15 FEB.,01
D4	CHG 9601A TO 9601. CHG TADMEM..23 LOCATION.	QUINCY	22 MAR.,01



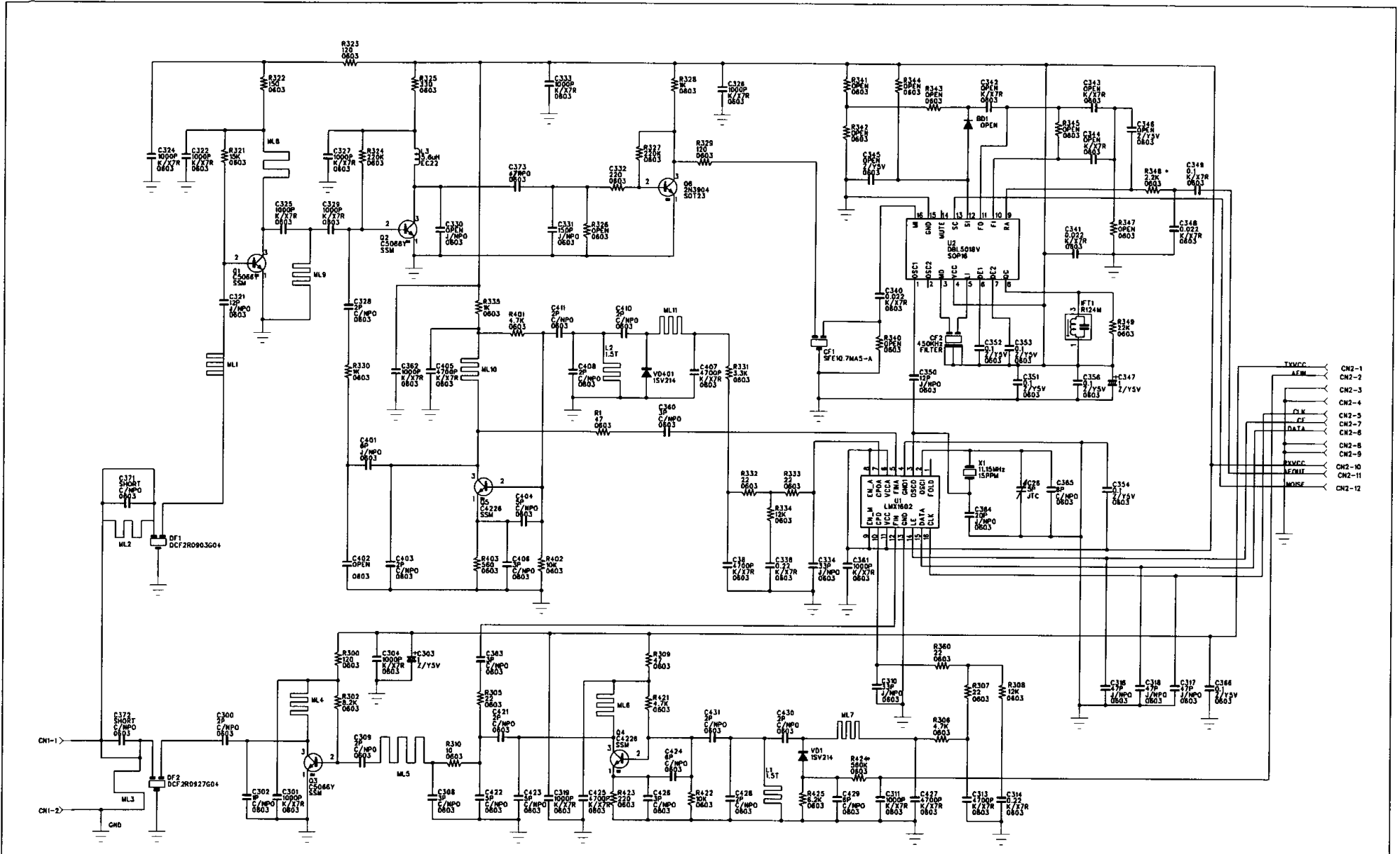
Title		TAD ASIC PCB	
Size	Document Number	REV	
B	SCH-822-USBA-D4	D4	
Date:	April 19, 2001	Sheet	1 of 1



Size	Document Number	REV
A		D10
Date:	May 20, 2001	Sheet of 6



DRAWN:		DATED: 4-JUNE-2001		COMPANY: TELEFIELD	
CHECKED:		DATED:		TITLE: FF2150 TELEFIELD RF MODULE(BASE)	
QUALITY CONTROL:		DATED:		PCB FILE:	
RELEASED:		DATED:		SCALE:	SIZE: A3
				CODE:	DRAWING NO:
				REV: 0	
				SHEET: OF	



DRAWN:	DATED: 4-JUNE-2001	COMPANY: TELEFIELD	
CHECKED:	DATED:	TITLE: FF2150 TELEFIELD RF MODULE(HANDSET)	
QUALITY CONTROL:	DATED:	PCB FILE:	
RELEASED:	DATED:	SCALE:	SIZE: A3 REV: 0
		CODE:	DRAWING NO: SHEET: OF