



## Product End-of-Life Disassembly Instructions

**Product Category: Notebooks**

### Marketing Name / Model [List multiple models if applicable.]

Name / Model #1 HP EliteBook 840 14 inch G9 Notebook PC
Name / Model #2 HP EliteBook 840 G9
Name / Model #3 HP EliteBook 1040 14 inch G9 Notebook PC
Name / Model #4 HP EliteBook 1040 14 inch G9
Name / Model #5 HP ZBook Firefly 14 inch G9 Mobile Workstation PC
Name / Model #6 HP ZBook Firefly 14 inch G9

**Purpose:** The document is intended for use by end-of-life recyclers or treatment facilities. It provides the basic instructions for the disassembly of HP Inc. products to remove components and materials requiring selective treatment, as defined by EU directive 2012/19/EC, Waste Electrical and Electronic Equipment (WEEE).

NOTE: Recyclers should sort plastic materials into resin streams for recycling based on the ISO 11469 plastic marking code on the plastic part. For any questions on plastic marking or identification of location of parts or components requiring selective treatment, please contact [HP's Sustainability Contact](#).

### 1.0 Items Requiring Selective Treatment

1.1 Items listed below are classified as requiring selective treatment. An "X" in the list of components and parts indicates the product contains the component or part requiring selective treatment

Item Description	Components and parts requiring selective treatments	Quantity of items included in product
Printed Circuit Boards (PCB) or Printed Circuit Assemblies (PCA) with a surface greater than 10 sq cm	<input checked="" type="checkbox"/> Main board (MB) PCB <input checked="" type="checkbox"/> Solid state drive (SSD) PCB <input checked="" type="checkbox"/> Wireless WAN module (WWAN) PCB <input checked="" type="checkbox"/> Touch module PCB <input checked="" type="checkbox"/> Power supply PCB <input type="checkbox"/> External Keyboard (KB) <input type="checkbox"/> External Mouse <input checked="" type="checkbox"/> Others: RAM, WLAN, I/O Board 3 pcs)	8
Batteries, excluding Li-Ion batteries. This includes standard alkaline, coin or button style batteries	<input checked="" type="checkbox"/> RTC/CMOS battery <input type="checkbox"/> Others: _____	1
Li-Ion batteries. Includes all Li-Ion batteries if more than one is provided with the product (such as a detachable notebook keyboard battery, etc.)	Li-ion battery(ies) are attached to the product by: <input checked="" type="checkbox"/> screws <input checked="" type="checkbox"/> snaps <input type="checkbox"/> adhesive <input type="checkbox"/> other. Explain _____	1
Mercury-containing components. For example, mercury in lamps, display backlights, scanner lamps, switches, batteries		0

Item Description	Components and parts requiring selective treatments	Quantity of items included in product
Liquid Crystal Displays (LCD) with a surface greater than 100 sq cm. Includes background illuminated displays with gas discharge lamps	<input checked="" type="checkbox"/> Panel LCD	1
Cathode Ray Tubes (CRT)		0
Capacitors / condensers (Containing PCB/PCT)		0
Electrolytic Capacitors / Condensers measuring greater than 2.5 cm in diameter or height	<input type="checkbox"/> Power Supply capacitor(s) or condenser(s)	0
External electrical cables and cords	<input checked="" type="checkbox"/> AC power cord <input type="checkbox"/> Audio, video or data cables <input type="checkbox"/> Other: _____	1
Gas Discharge Lamps		0
Plastics containing Brominated Flame Retardants (not including external electrical cables and cords, PCBs or PCAs already listed as a separate item above)	Excluding B&S parts (EPS)	0
Components and parts containing toner and ink, including liquids, semi-liquids (gel/paste) and toner. Include the cartridges, print heads, tubes, vent chambers, and service stations.		0
Components and waste containing asbestos		0
Components, parts and materials containing refractory ceramic fibers		0
Components, parts and materials containing radioactive substances		0
Components containing chlorofluorocarbons (CFC), hydrochlorofluorocarbons (HCFC) or hydrofluorocarbons (HFC), hydrocarbons (HC)		0

## 2.0 Tools Required

List the type and size of the tools that would typically be used to disassemble the product to a point where components and materials requiring selective treatment can be removed.

Tool Description	Tool Size (if applicable)
Screwdriver	Philip #0
Screwdriver	Torx T8

## 3.0 Product Disassembly Process

3.1 List the basic steps that should typically be followed to remove components and materials requiring selective treatment including the required steps to remove the external enclosure.

1. Follow steps described in each operation name of disassembly instruction in 3.2 section
2. If parts can be removed without using a tool, remove it first
3. Use correct screwdriver and torque value before unlock the screw

3.2 Location of components requiring selective treatment. The photos and/or graphics below identify the location of the parts or components requiring selective treatment within the main unit. For End-of-Life product disassembly instructions of external accessories including external power supply (EPS), external keyboard (KB) external mouse and external cables and cords, refer to the following URL: [End-of-Life Product Disassembly Instructions \(hp.com\)](https://www.hp.com)







# Standard Operation Procedure

Document No. : HP EliteBook 840 & 845 G9 disassemble SOP

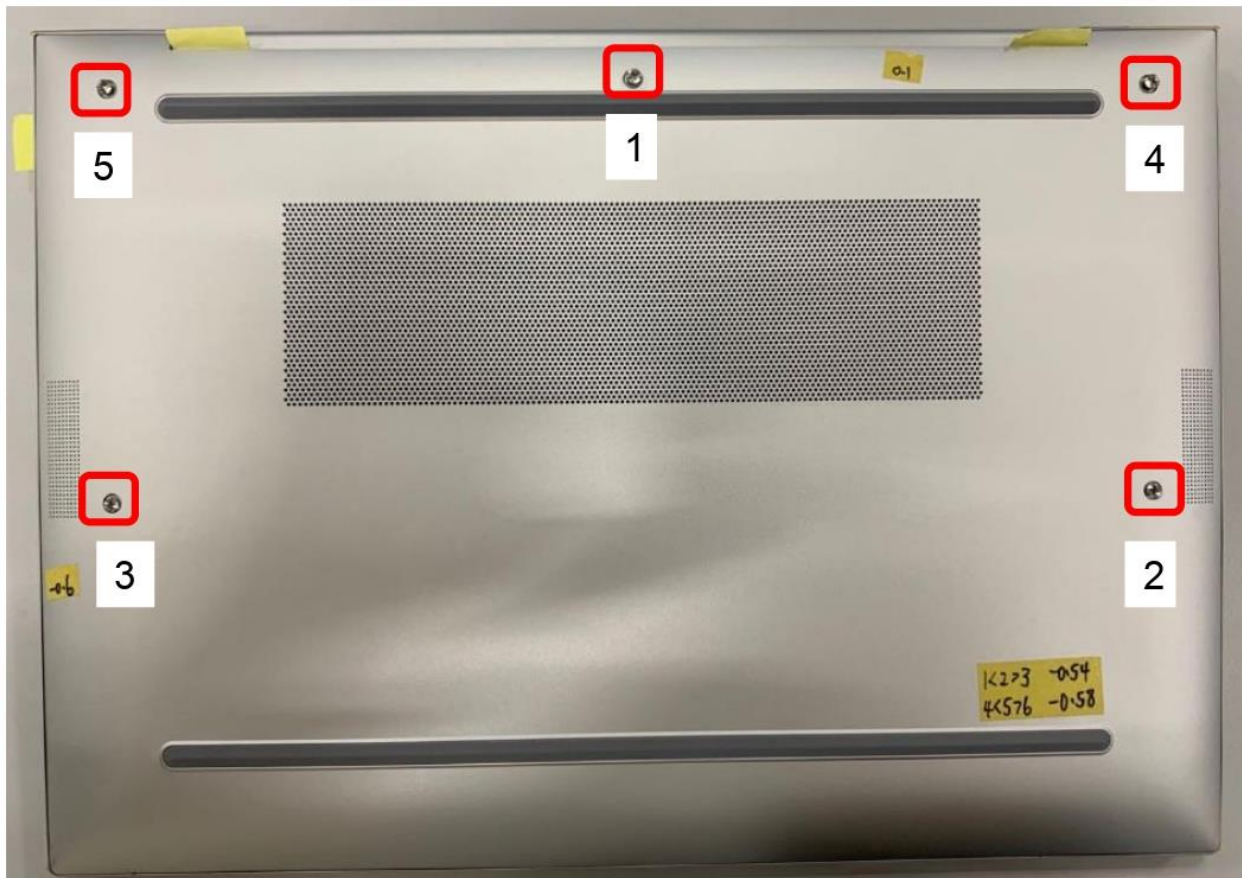
Station : 1(1/1)

Operation Name : Release Base screws

Ver. : 1.00 Edit date : 2022/1/4

## Step :

- ☞ 1. Loosen Base screw \*5pcs as below picture showing.
  - ❖ Torque :  $2.5 \pm 0.2$  kgf.cm
  - ❖ screw can not be slipped.



Notice: Please inform production line leader or master if you found any abnormal..

Fixture list (Spec.)	Qty	Symbol							
電動起子	1								
		Safe	Quality	Order	Fixture	Hear	Look	manual	Static

EL-MF:  
Templ  
last up

Lister : Zhou.gui-ling Issue Department : : Industrial Engineering Class



# Standard Operation Procedure

Document No. : HP EliteBook 840 & 845 G9 disassemble SOP

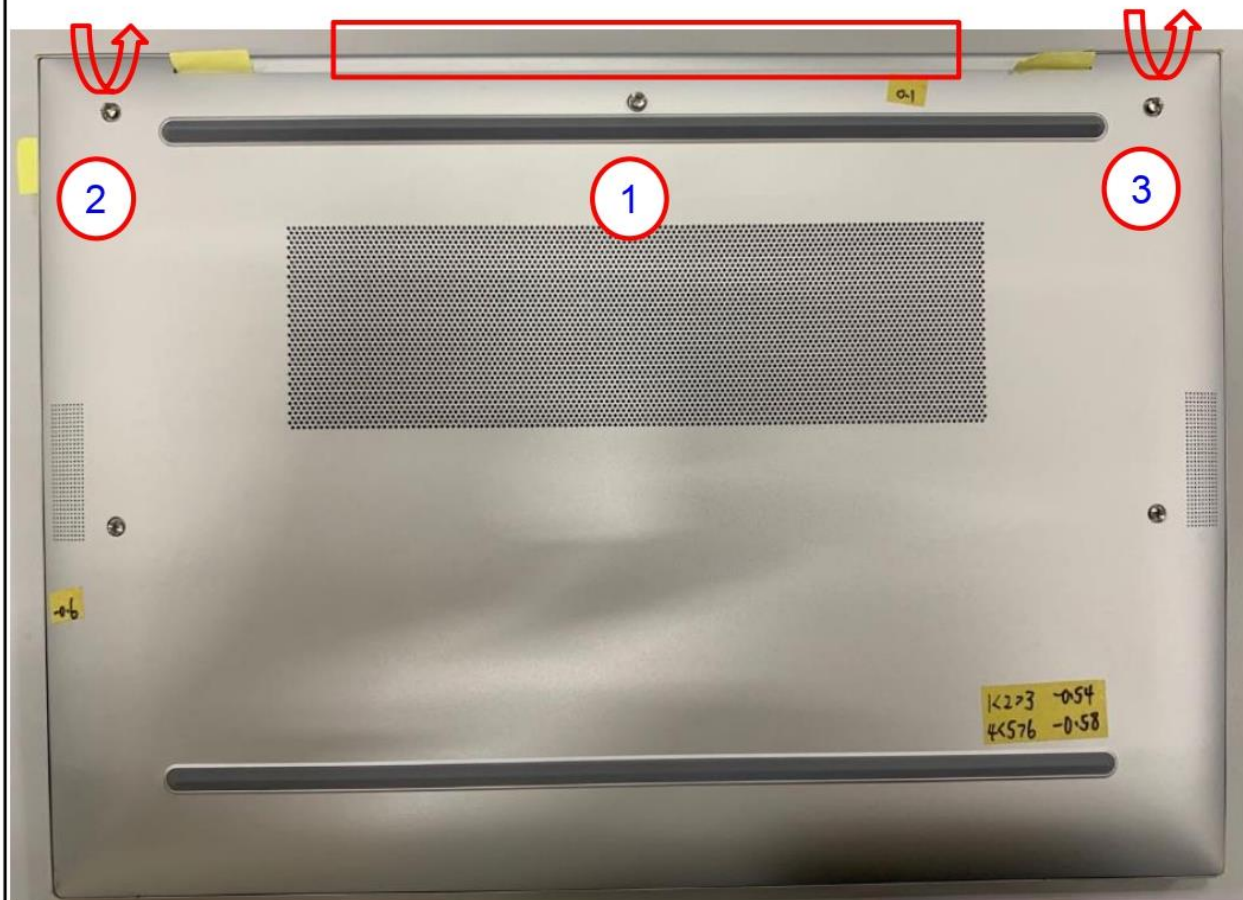
Station : 2(1/1)

Operation Name : Disassembly BASE

Ver. : 1.00 Edit date : 2022/1/4

## Step :

- ☞ 1. Use cable jig to separate Base from unit.  
Attention: Insert jig to TOP & Base gap area, then slide jig to separate TOP & Base.
- ☞ 2. Put hands on Base and TOP corner area, handle Base lift it up while press TOP down.
- ☞ 3. Take away the Base from unit.



Notice: Please inform production line leader or master if you found any abnormal..

Fixture list (Spec.)	Qty	Symbol							
Cable jig	1								
		Safe	Quality	Order	Fixture	Hear	Look	manual	Static

EL-MF:  
Templ  
last up

Lister : Zhou.gui-ling Issue Department : : Industrial Engineering Class



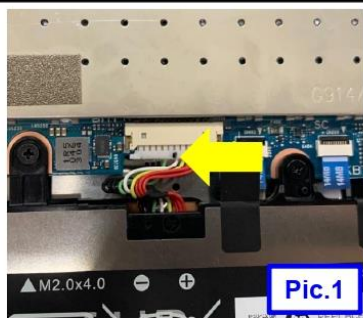
# Standard Operation Procedure

Document No. : HP EliteBook 840 & 845 G9 disassemble SOP

Station : 3(1/1)

Operation Name : Disassembly speaker

Ver. : 1.00 Edit date : 2022/1/4



## Step :

1. Pullout battery cable from connector as Pic.1.
2. Loosen speaker screw \*2pcs as below picture showing
3. Pullout speaker cable from connector as Pic.2
4. Take away L/R speaker from unit.

❖ Torque :  $1.5 \pm 0.2$  kgf.cm

❖ screw can not be slipped.

从C件上取喇叭



Notice: Please inform production line leader or master if you found any abnormal..

Fixture list (Spec.)	Qty	Symbol							
		Safe	Quality	Order	Fixture	Hear	Look	manual	Static

Lister : Zhou.gui-ling Issue Department : : Industrial Engineering Class





# Standard Operation Procedure

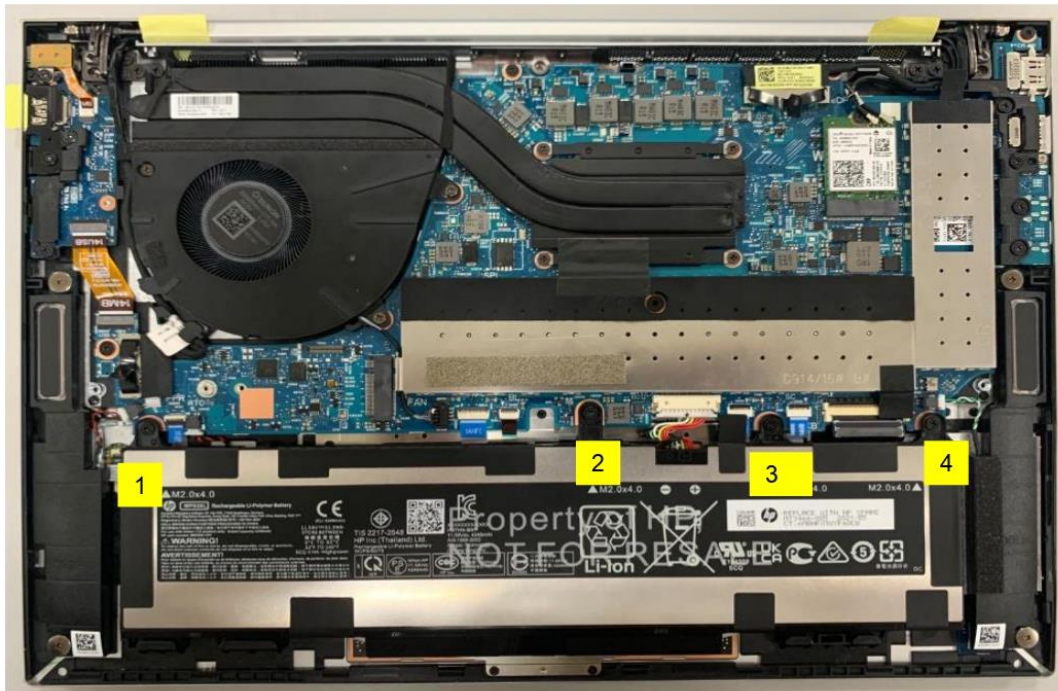
Document No. : HP EliteBook 840 & 845 G9 disassemble SOP  
 Operation Name : Disassembly battery

Station : 4(1/1)  
 Ver. : 1.00 Edit date : 2022/1/4

## Disassemble battery

### Step :

- ✎ 1. Loosen Battery screw \*4pcs as below picture showing. (6052B0081901) \*4  
 ❖ Torque :  $1.5 \pm 0.2$  kgf.cm  
 ❖ screw can not be slipped.
- ✎ 2. Take out battery from unit.



Notice: Please inform production line leader or master if you found any abnormal..

Fixture list (Spec.)	Qty	Symbol							
电动起子	1								
		Safe	Quality	Order	Fixture	Hear	Look	manual	Static

Lister : Zhou.gui-ling Issue Department : : Industrial Engineering Class



# Standard Operation Procedure

Document No. : HP EliteBook 840 & 845 G9 disassemble SOP

Station : 5(1/1)

Operation Name : Disassembly DDR&SSD shielding can Ver. : 1.00 Edit date : 2022/1/4

**UMA**

**DIS**

**Step : For WWAN SKU**

1. Take down SSD thermal pad ( 6054B1159301 \*1 ) ( picture 1 )  
thermal grease on the corresponding position of base
2. Take down DDR&SSD shielding can ( picture 2 )

**Solid state drive (SSD) PCB**

Notice: Please inform production line leader or master if you found any abnormal..

Fixture list (Spec.)	Qty	Symbol							
		Safe	Qual ity	Ord er	Fix tur e	Hear	Loo k	man ual	Sta tic

Lister : Zhou.gui-ling Issue Department : : Industrial Engineering Class





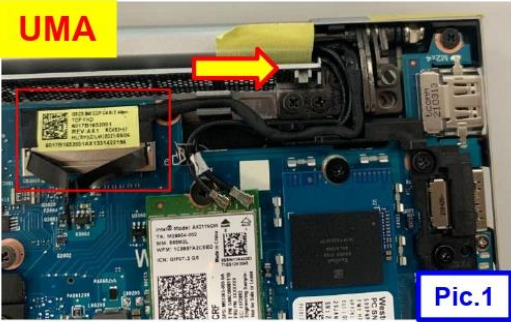
# Standard Operation Procedure

Document No. : HP EliteBook 840 & 845 G9 disassemble SOP

Station : 6(1/1)

Operation Name : Take down DDR \ EDP cable \ WLAN cable

Rate : 1.00 Edit date : 2022/1/4




**UMA**

**Pic.1**

**Step :**


- 1.Take down EDP cable ( Pic1 \ Pic2 )
- 2.Take down WLAN cable ( Pic3 )
- 3.Take down DDR ( Pic4 )

**Disassemble Wireless WAN module (WWAN) PCB**




**DIS**

**Pic.2**




**UMA**

**Pic.3**



**DIS**

**Pic.3**



**Pic.4**

Notice: Please inform production line leader or master if you found any abnormal..

Fixture list (Spec.)	Qty	Symbol							
		Safe	Quality	Order	Fixture	Hear	Look	manual	Static

Lister : Zhou.gui-ling Issue Department : : Industrial Engineering Class



# Standard Operation Procedure

Document No. HP EliteBook 840 & 845 G9 disassemble SOP

Station : 7(1/2)

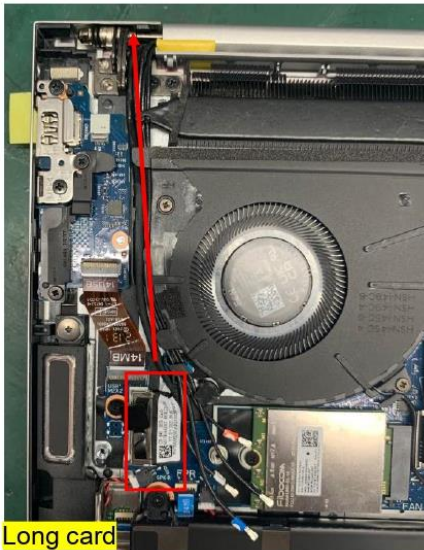
Operation Name : Take down Camera Cable

Ver. : 1.00 Edit date : 2022/1/4

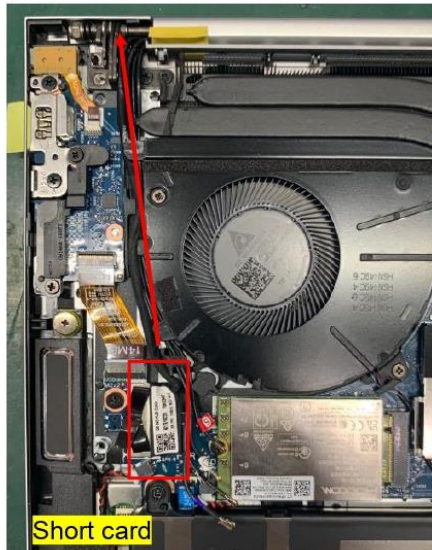
## Step :

1. Take down Camera Cable ( Pic1 )

**UMA**



Long card



Short card

**Pic.1**

Notice: Please inform production line leader or master if you found any abnormal..

Fixture list (Spec.)	Qty	Symbol							
		Safe	Quality	Order	Fixture	Hear	Look	manual	Static

Lister : Zhou.gui-ling Issue Department : : Industrial Engineering Class



# Standard Operation Procedure

Document No. : HP EliteBook 840 & 845 G9 disassemble SOP

Station : 7(2/2)

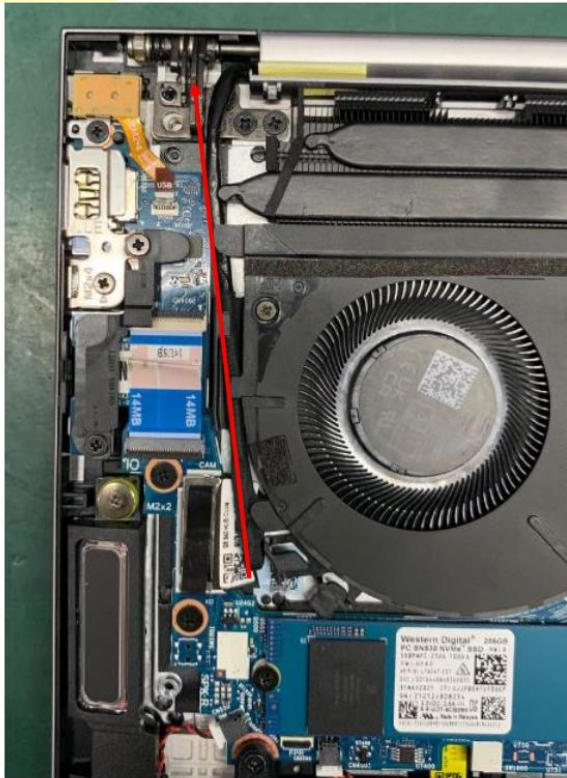
Operation Name : Take down Camera Cable

Ver. : 1.00 Edit date : 2022/1/4

## Step :

- 1. Take down Camera Cable ( Pic1 )

**DIS**



**Pic.1**

Notice: Please inform production line leader or master if you found any abnormal..

Fixture list (Spec.)	Qty	Symbol							
		Safe	Quality	Order	Fixture	Hear	Look	manual	Static

Lister : Zhou.gui-ling Issue Department : : Industrial Engineering Class





# Standard Operation Procedure

Document No. : HP EliteBook 840 & 845 G9 disassemble SOP

Station : 8(1/1)

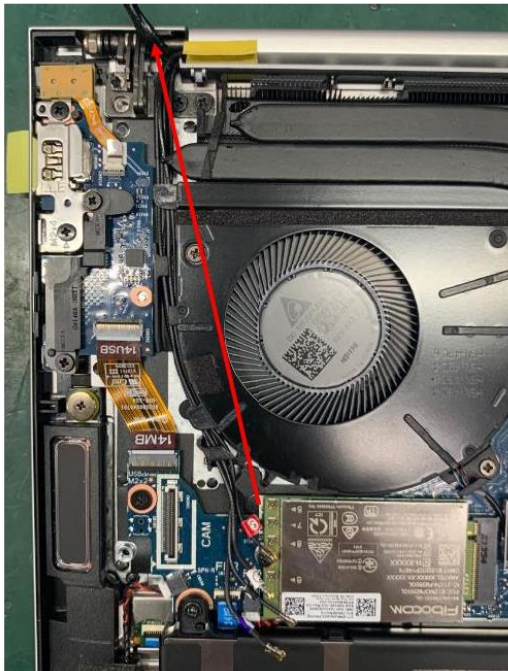
Operation Name : Take down WWAN Antenna Cable

Ver. : 1.00

Edit date : 2022/1/4

## Step :

1. Take down WWAN Antenna Cable ( Pic1 )



Long card



Short card

Pic.1

Notice: Please inform production line leader or master if you found any abnormal..

Fixture list (Spec.)	Qty	Symbol							
		Safe	Quality	Order	Fixture	Hear	Look	manual	Static

Lister : Zhou.gui-ling Issue Department : : Industrial Engineering Class



# Standard Operation Procedure

Document No. : HP EliteBook 840 & 845 G9 disassemble SOP

Station : 9 ( 1/1 )

Operation Name : Take down hinge screw from C part

Ver. : 1.00

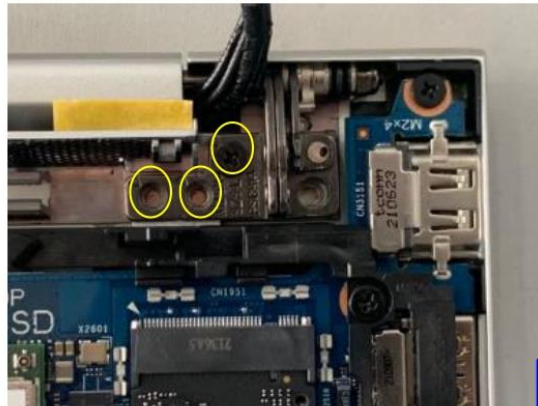
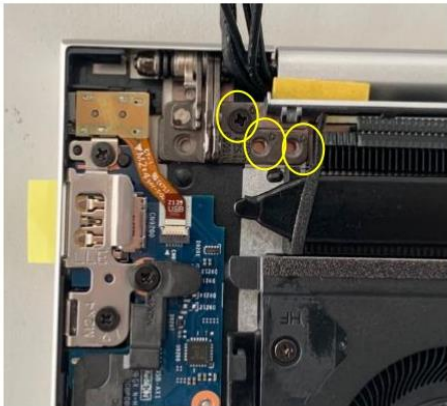
Edit date : 2022/1/4



Pic.1

## Step :

1. Open LCD to 160 degree. ( Pic1 )
2. Loosen Hinge screw \*6pcs and disassembly Base unit to separate hinge up and Base unit. ( Pic2 )
  - ❖ Torque :  $3.0 \pm 0.2$  kgf.cm
  - ❖ screw can not be slipped.
3. Take down hinge up



Pic.2

Notice: Please inform production line leader or master if you found any abnormal..

Fixture list (Spec.)	Qty	Symbol								
Screw driver	1		Safe	Quality	Order	Fixture	Hear	Look	manual	Static
Support jig	1									

Lister : Zhou.gui-ling

Issue Department : : Industrial Engineering Class



# Standard Operation Procedure

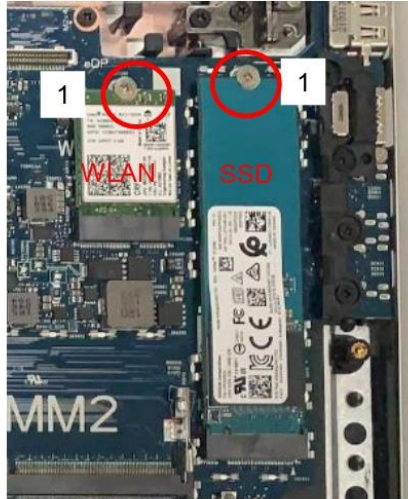
Document No. : HP EliteBook 840 & 845 G9 disassemble SOP

Station : 10 ( 1/1 )

Operation Name : Take down SSD/WLAN/WWAN card Ver. : 1.00 Edit date : 2022/1/4

## Step :

1. Take down screw \*3 (Pic1)
  - ❖ Torque : 1.5 ± 0.2 kgf.cm
  - ❖ screw can not be slipped
2. Take down SSD/WLAN/WWAN card (Pic1 & Pic2)



Pic.1

Disassemble SSD



Pic.2

Notice: Please inform production line leader or master if you found any abnormal..

Fixture list (Spec.)	Qty	Symbol							
Screw driver	1								
		Safe	Quality	Order	Fixture	Hear	Look	manual	Static

Lister : Zhou.gui-ling Issue Department : : Industrial Engineering Class





# Standard Operation Procedure

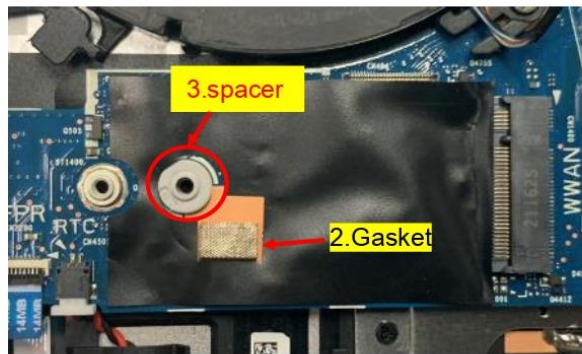
Document No. : HP EliteBook 840 & 845 G9 disassemble SOP

Station : 11 ( 1/1 )

Operation Name : Take down short Mylar/SSD thermal pad Ver. : 1.00 Edit date : 2022/1/4

## Step :

1. Take down thermal pad ( 6054B1159301 \*1 )  
**For WWAN SKU**
2. Take down short circuit mylar ( 6054B2406701 ) & Gasket ( 6054B1458301 )
3. Take down spacer ( 6051B1504201 ) for WWAN short card



Notice: Please inform production line leader or master if you found any abnormal..

Fixture list (Spec.)	Qty	Symbol							
Screw driver	1								
		Safe	Quality	Order	Fixture	Hear	Look	manual	Static

Lister : Zhou.gui-ling Issue Department : : Industrial Engineering Class



# Standard Operation Procedure

Document No. : HP EliteBook 840 & 845 G9 disassemble SOP

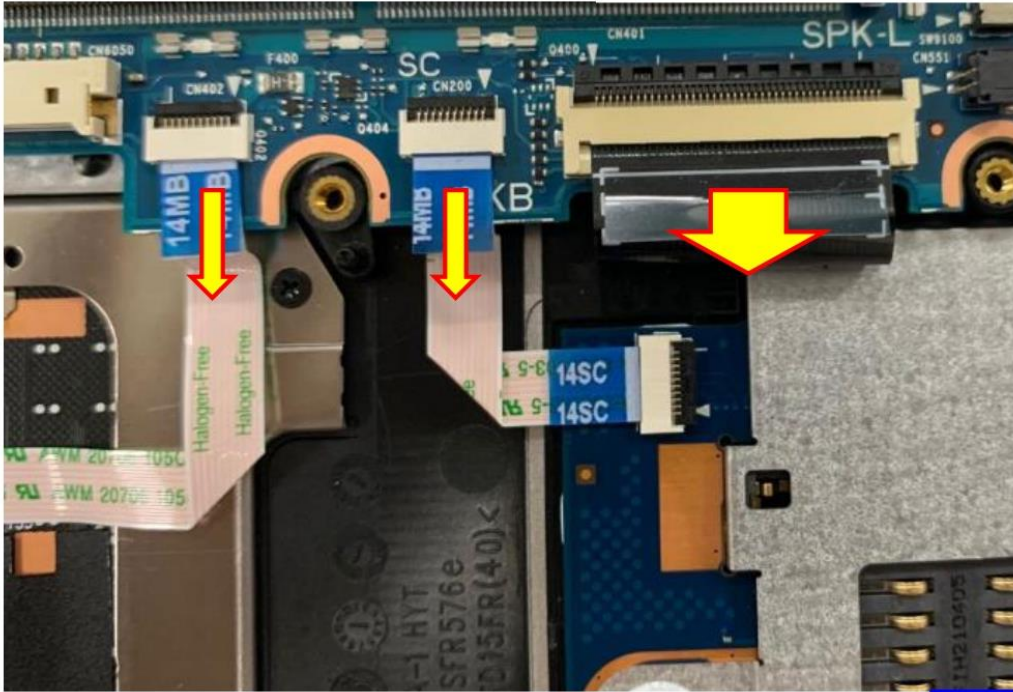
Station : 12(1/1)

Operation Name : Take down Click pad/Smart card/KB FFC

Ver. : 1.00 Edit date : 2022/1/4









## Step :

-  1. Take down Click pad FFC (Pic1)
-  2. Take down Smart Card FFC (Pic2)
-  3. Take down K/B FFC ( Pic3 )



**Pic.1**

Notice: Please inform production line leader or master if you found any abnormal..

Fixture list (Spec.)	Qty	Symbol							
									
		Safe	Quality	Order	Fixture	Hear	Look	manual	Static

Lister : Zhou.gui-ling Issue Department : : Industrial Engineering Class






# Standard Operation Procedure

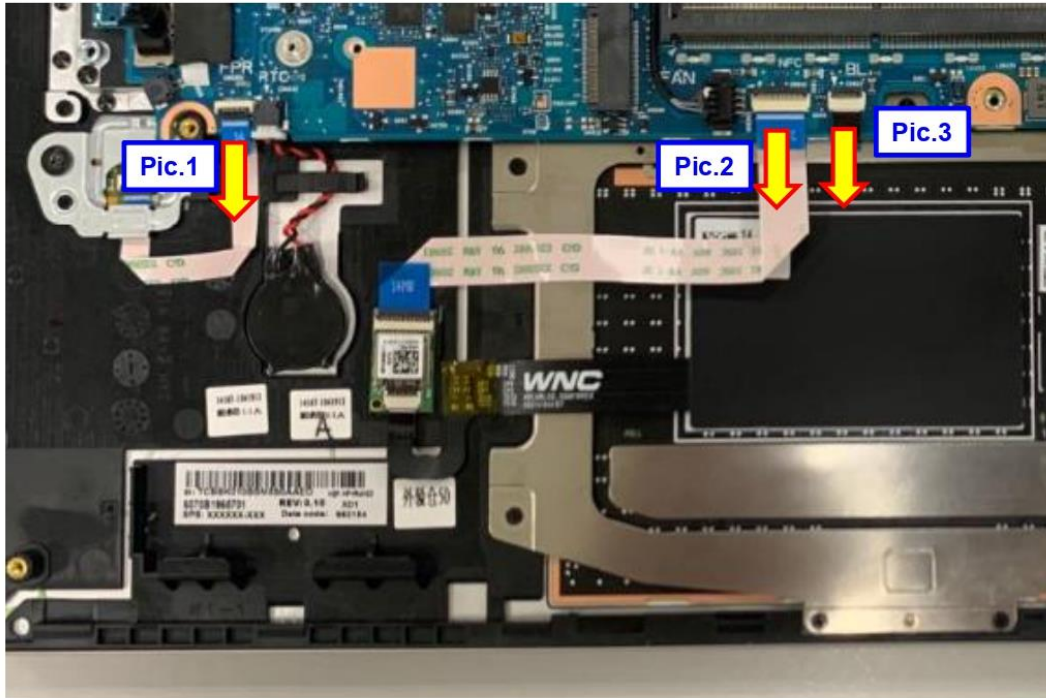
Document No. : HP EliteBook 840 & 845 G9 disassemble SOP

Station : 13(1/1)









Operation Name : Take down FR/NFC FFC及及K/B B/L FFC Ver. : 1.00 Edit date : 2022/1/4

## Step :

-  1. Take down Finger print FFC Pic1)
-  2. Take down NFC FFC (Pic2)
-  3. Take down K/B B/L FFC(Apologamy) (Pic3)



Notice: Please inform production line leader or master if you found any abnormal..

Fixture list (Spec.)	Qty	Symbol							
									
		Safe	Quality	Order	Fixture	Hear	Look	manual	Static

Lister : Zhou.gui-ling Issue Department : : Industrial Engineering Class





# Standard Operation Procedure

Document No. : HP EliteBook 840 & 845 G9 disassemble SOP

Station : 14(1/1)

Operation Name : Take down NFC

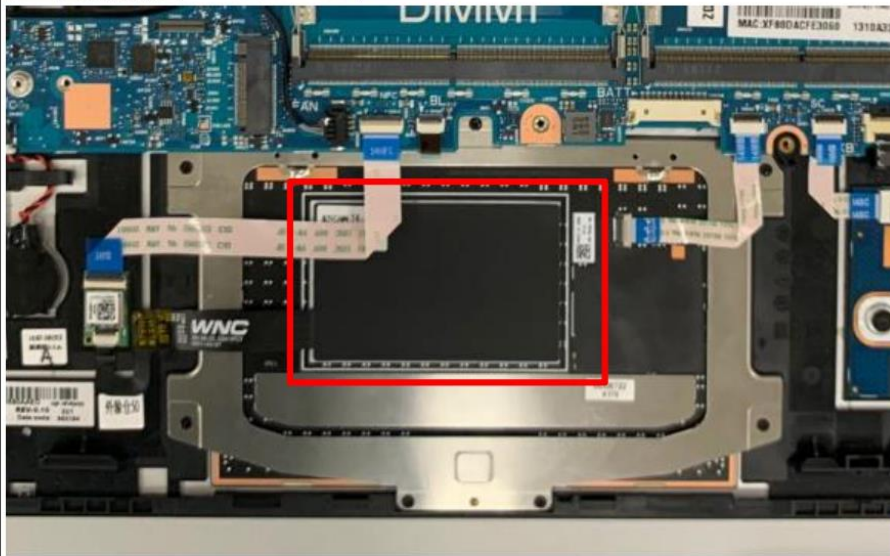
Ver. : 1.00 Edit date : 2022/1/4



Pic.2

## Step :

1. Take down NFC Module antenna parts ( Pic1)
  2. Take down NFC Module PCB parts ( Pic2)
- ◆ CNTR can not pull drag
  - ◆ NFC antenna can not pull drag



Pic.1

Notice: Please inform production line leader or master if you found any abnormal..

Fixture list (Spec.)	Qty	Symbol							
		Safe	Quality	Order	Fixture	Hear	Look	manual	Static

Lister : Zhou.gui-ling Issue Department : : Industrial Engineering Class



# Standard Operation Procedure



Document No. : HP EliteBook 840 & 845 G9 disassemble SOP

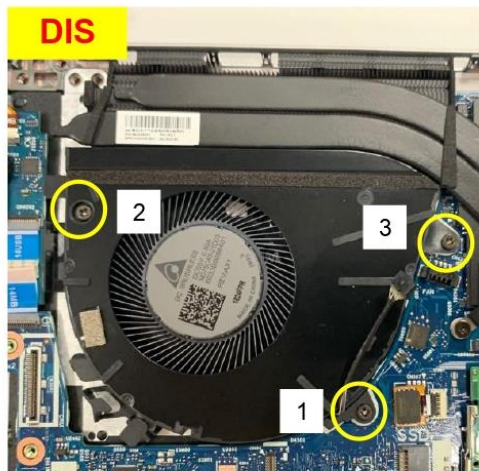
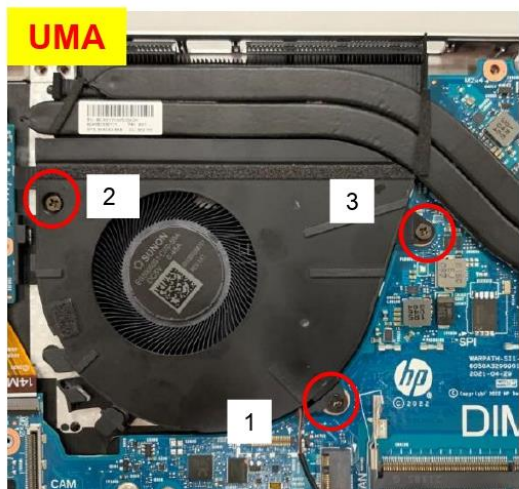
Station : 15(1/1)

Operation Name : Take down FAN screw

Ver. : 1.00 Edit date : 2022/1/4

## Step :

-  1 take down FAN Screw (SET) \* 3 ( Pic1 )  
❖ screw can not be slipped ; Torque :  $1.5 \pm 0.2\text{Kgf} \cdot \text{Cm}$
-  2 take down FAN connector ( pic2 )











Pic.1



Pic.2

Notice: Please inform production line leader or master if you found any abnormal..

Fixture list (Spec.)	Qty	Symbol							
Screw driver	1								
		Safe	Qual ity	Ord er	Fix tur e	Hear	Loo k	man ual	Sta tic

Lister : Zhou.gui-ling Issue Department : : Industrial Engineering Class







# Standard Operation Procedure

Document No. : HP EliteBook 840 & 845 G9 disassemble SOP

Station : 16(1/1)

Operation Name : Take down USB FFC/small battery Ver. : 1.00 Edit date : 2022/1/4

## Step :

-  1. Take down USB/B FFC ( Pic 1)
-  2. Take down small battery (Pic 2)

## Disassemble RTC/CMOS battery

UMA











Pic.1

DIS



Pic.2

Notice: Please inform production line leader or master if you found any abnormal..

Fixture list (Spec.)	Qty	Symbol							
									
		Safe	Quality	Order	Fixture	Hear	Look	manual	Static

Lister : Zhou.gui-ling Issue Department : : Industrial Engineering Class



# Standard Operation Procedure

Document No. : HP EliteBook 840 & 845 G9 disassemble SOP

Station : 17(1/2)

Operation Name : Take down M/B screw and IO frame Ver. : 1.00 Edit date : 2022/1/4

## Step :

1. Take down Frame and screw M2x4L (6052B0081901) \* 5 (Pic1)
  - ❖ screw can not be slipped
  - ❖ Torque :  $1.5 \pm 0.2\text{Kgf} \cdot \text{cm}$
2. Take down IO Frame (6051B1493301)

## The Main Board

### 14P/14W UMA



Pic.1

Notice: Please inform production line leader or master if you found any abnormal..

Fixture list (Spec.)	Qty	Symbol							
Screw driver	1								
		Safe	Quality	Order	Fixture	Hear	Look	manual	Static

Lister : Zhou.gui-ling Issue Department : : Industrial Engineering Class





# Standard Operation Procedure

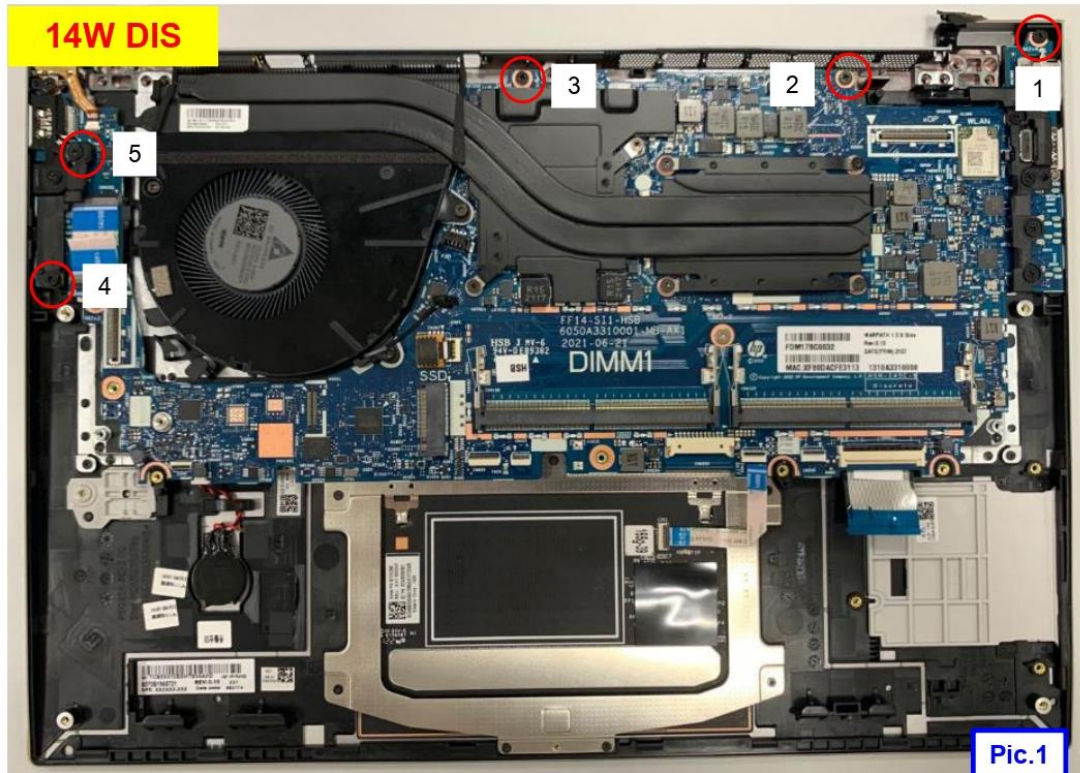
Document No. : HP EliteBook 840 & 845 G9 disassemble SOP

Station : 17(2/2)

Operation Name : Take down M/B screw and IO frame Ver. : 1.00 Edit date : 2022/1/4

## Step :

- ✎ 1. Take down Frame and screw M2x4L (6052B0081901) \* 5 (Pic1)
  - ❖ screw can not be slipped
  - ❖ Torque :  $1.5 \pm 0.2\text{Kgf} \cdot \text{cm}$
- ✎ 2. Take down IO Frame (6051B1493301)



Notice: Please inform production line leader or master if you found any abnormal..

Fixture list (Spec.)	Qty	Symbol							
Screw driver	1								
		Safe	Quality	Order	Fixture	Hear	Look	manual	Static

Lister : Zhou.gui-ling Issue Department : : Industrial Engineering Class



# Standard Operation Procedure

Document No. : HP EliteBook 840 & 845 G9 disassemble SOP

Station : 18(1/2)

Operation Name : Take down M/B screw

Ver. : 1.00 Edit date : 2022/1/4

Step :

**14P/14W UMA**

1. Take down M/B scerwM2x2L (6052B0388301) \* 2 ( pic 1 )

- ❖ screw can not be slipped
- ❖ Torque :  $1.5 \pm 0.2\text{Kgf} \cdot \text{cm}$

**14P/14W UMA**



Notice: Please inform production line leader or master if you found any abnormal..

Fixture list (Spec.)	Qty	Symbol							
Screw driver	1								
		Safe	Quality	Order	Fix tur e	Hear	Look	man ual	Sta tic

Lister : Zhou.gui-ling Issue Department : : Industrial Engineering Class





# Standard Operation Procedure

Document No. : HP EliteBook 840 & 845 G9 disassemble SOP

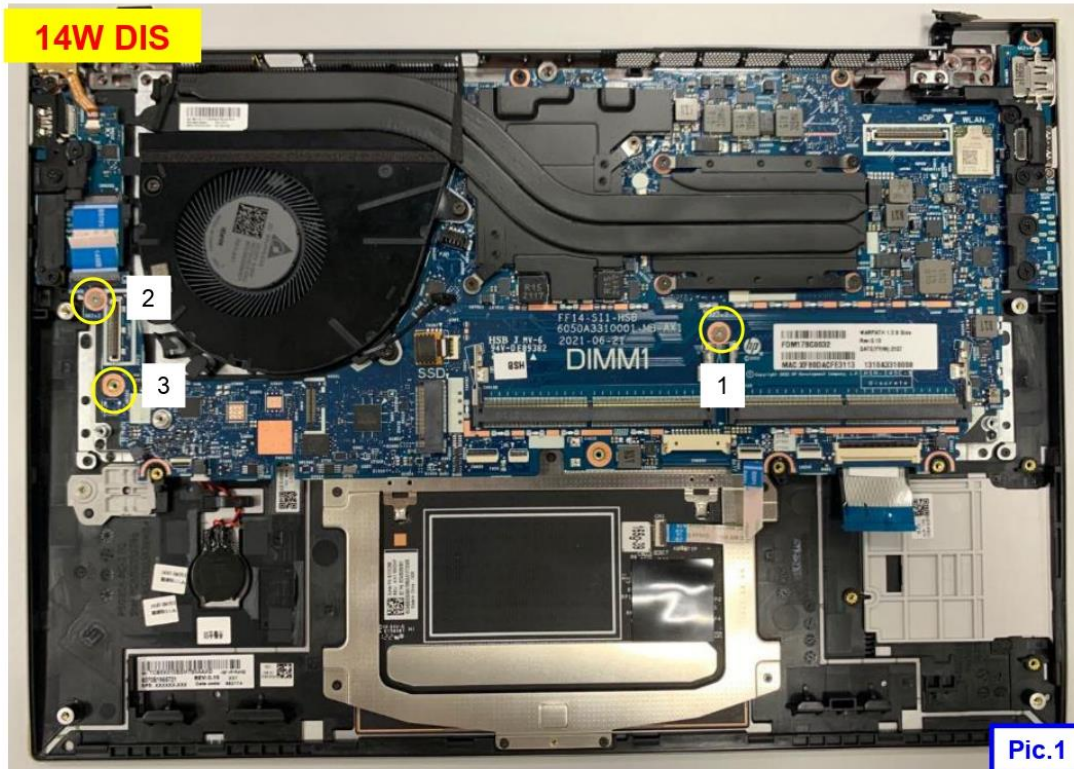
Station : 18(2/2)

Operation Name : Take down M/B screw

Ver. : 1.00 Edit date : 2022/1/4

## Step : 14W DIS

1. Take down M/B screw M2x2L (6052B0388301) \* 3 ( pic 1 )
- ❖ screw can not be slipped
  - ❖ Torque :  $1.5 \pm 0.2\text{Kgf} \cdot \text{cm}$



Notice: Please inform production line leader or master if you found any abnormal..

Fixture list (Spec.)	Qty	Symbol							
Screw driver	1								
		Safe	Quality	Order	Fixture	Hear	Look	manual	Static

Lister : Zhou.gui-ling Issue Department : : Industrial Engineering Class



# Standard Operation Procedure

Document No. : HP EliteBook 840 & 845 G9 disassemble SOP

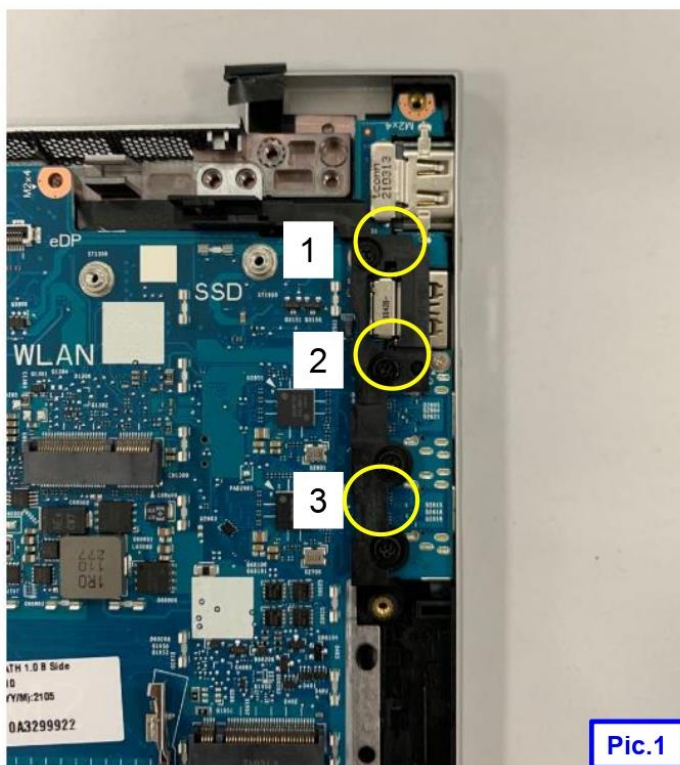
Station : 19(1/1)

Operation Name : Take down screw and IO frame

Ver. : 1.00 Edit date : 2022/1/4

## Step :

1. Take down Frame screw M2x4L \* 4 (Pic 1)
  - ❖ screw can not be slipped
  - ❖ Torque :  $1.5 \pm 0.2 \text{Kgf} \cdot \text{cm}$
2. Take down IO Frame (6051B1493401)



Notice: Please inform production line leader or master if you found any abnormal..

Fixture list (Spec.)	Qty	Symbol							
Screw driver	1								
		Safe	Quality	Order	Fixture	Hear	Look	manual	Static

Lister : Zhou.gui-ling Issue Department : : Industrial Engineering Class



# Standard Operation Procedure

Document No. : HP EliteBook 840 & 845 G9 disassemble SOP

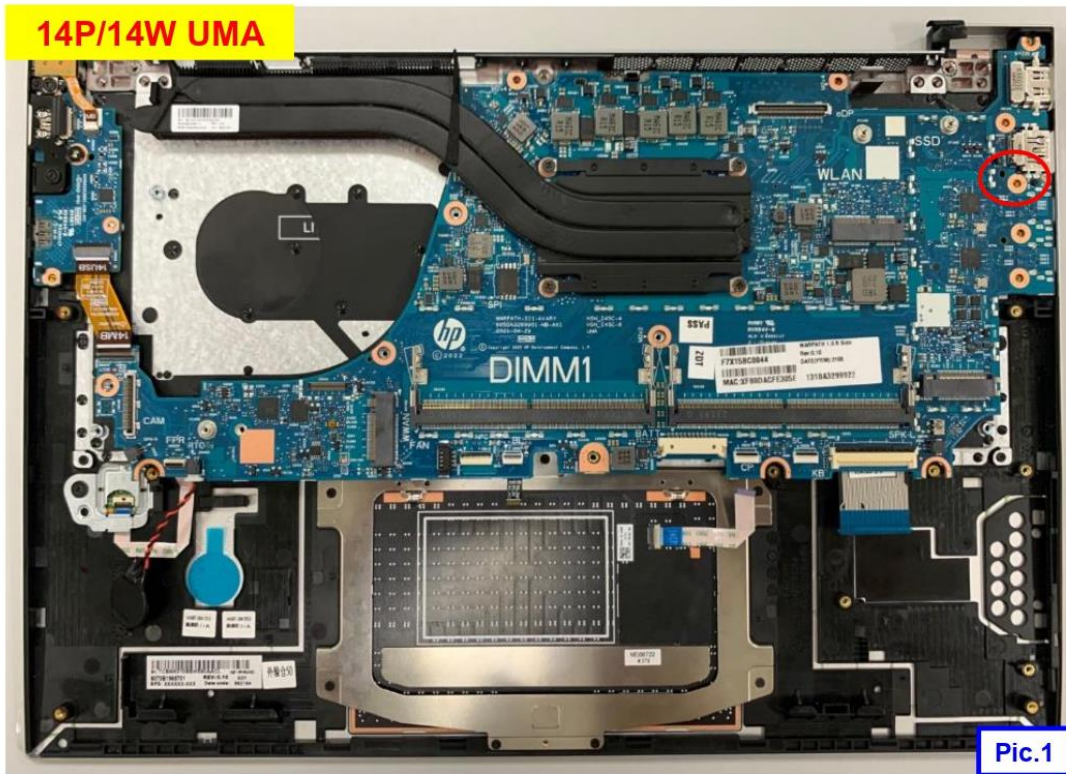
Station : 20(1/2)

Operation Name : Take down M/B

Ver. : 1.00 Edit date : 2022/1/4

## Step :

1. Take down M/B screw M1.6 x L4 (6052B0141301)\*1.
  2. Take down M/B from C parts(Pic 1)
- ❖ screw can not be slipped
  - ❖ Torque : 1.0 ± 0.2Kgf · cm



Notice: Please inform production line leader or master if you found any abnormal..

Fixture list (Spec.)	Qty	Symbol							
		Safe	Quality	Order	Fixture	Hear	Look	manual	Static

Lister : Zhou.gui-ling Issue Department : : Industrial Engineering Class





# Standard Operation Procedure

Document No. : HP EliteBook 840 & 845 G9 disassemble SOP

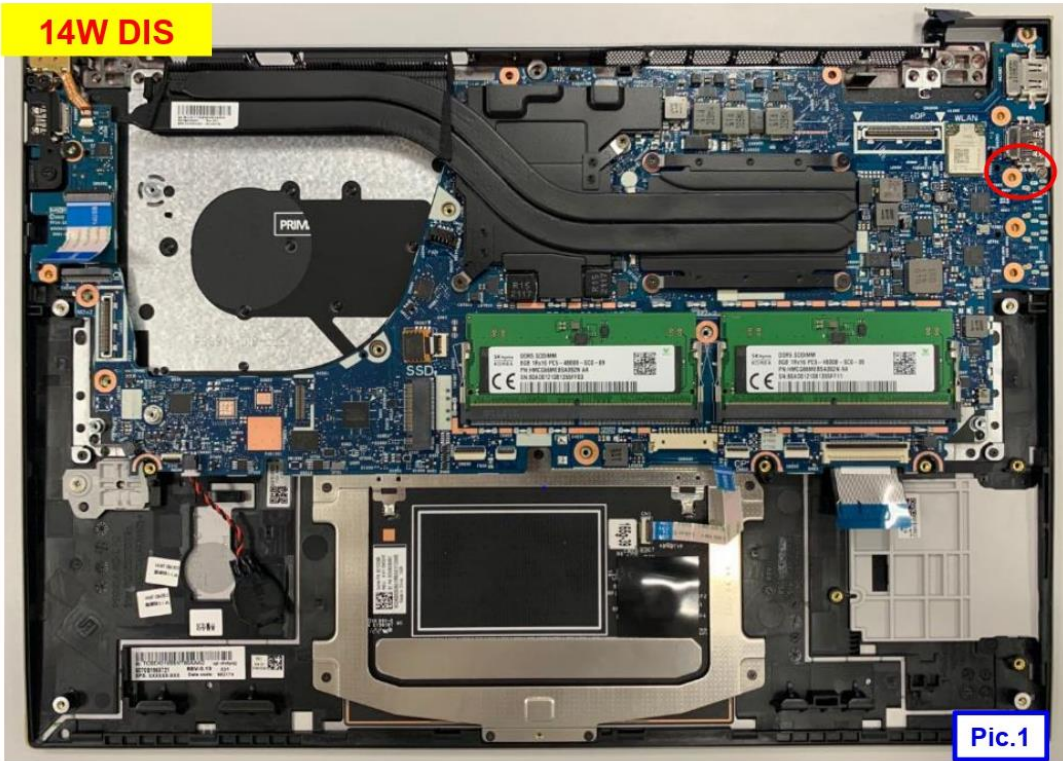
Station : 20(2/2)

Operation Name : Take down M/B

Ver. : 1.00 Edit date : 2022/1/4

## Step :

1. Take down screw M1.6 x L4 (6052B0141301)\*1.
  2. Take down M/B from C parts(Pic 1)
- ❖ screw can not be slipped
  - ❖ Torque :  $1.0 \pm 0.2\text{Kgf} \cdot \text{cm}$



Notice: Please inform production line leader or master if you found any abnormal..

Fixture list (Spec.)	Qty	Symbol							
		Safe	Quality	Order	Fixture	Hear	Look	manual	Static

Lister : Zhou.gui-ling Issue Department : : Industrial Engineering Class





# Standard Operation Procedure

Document No. : HP EliteBook 840 & 845 G9 disassemble SOP

Station : 21(1/1)

Operation Name : Take down Thermal scerw

Ver. : 1.00 Edit date : 2022/1/4

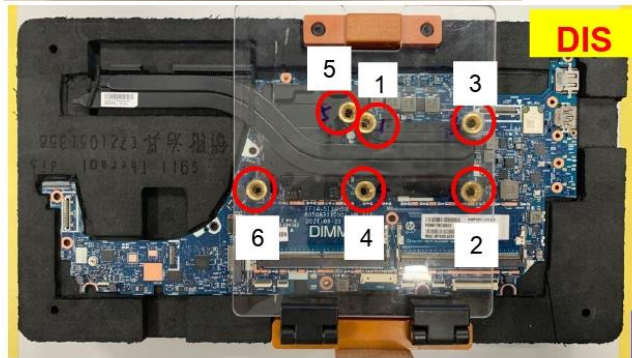
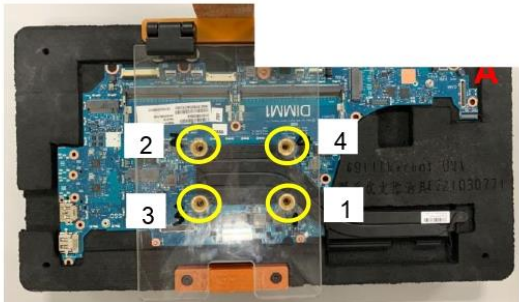
## Step :



1. Put the MB into the fixture, Take down thermal screw ( Pic1)

◆ Pay attention to the right way of taking thermal/check whether the fin has transformation.

◆ torque :  $1.5 \pm 0.2\text{Kgf} \cdot \text{cm}$



Pic.1

Notice: Please inform production line leader or master if you found any abnormal..

Fixture list (Spec.)	Qty	Symbol							
Lock pay support fixture	1								
		Safe	Quality	Order	Fixture	Hear	Look	manual	Static

Lister : Zhou.gui-ling Issue Department : : Industrial Engineering Class



# Standard Operation Procedure

Document No. : HP EliteBook 840 & 845 G9 disassemble SOP

Station : 22(1/2)

Operation Name : Take down Finger Print and Dummy Finger

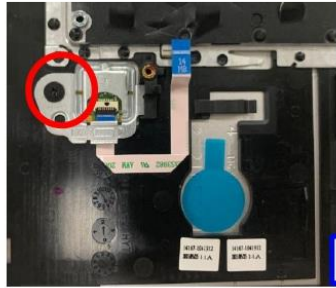
Ver. : 1.00 Edit date : 2022/1/4

## Step :

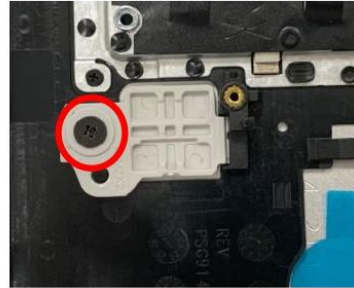
1. Take down screw M2.0 \* L2.0 (6052B0388301)  
(Pic 1/Pic 2/Pic3)

- ❖ screw can not be slipped
- ❖ Torque :  $1.5 \pm 0.2 \text{kgf} \cdot \text{cm}$

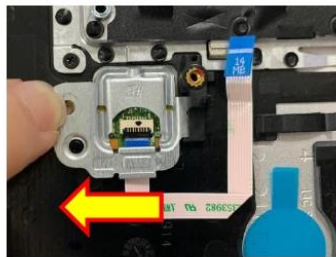
2. Take down Finger Print and Dummy Finger



Pic.1



Pic.2



Pic.2

Notice: Please inform production line leader or master if you found any abnormal..

Fixture list (Spec.)	Qty	Symbol							
Scerw driver	1								
		Safe	Qual ity	Ord er	Fix tur e	Hear	Loo k	man ual	Sta tic

Lister : Zhou.gui-ling Issue Department : : Industrial Engineering Class

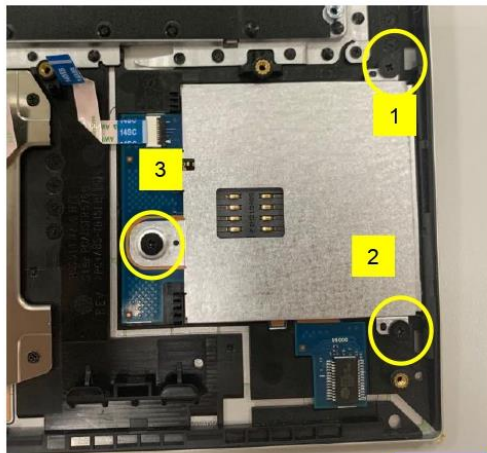


# Standard Operation Procedure

Document No. : HP EliteBook 840 & 845 G9 disassemble SOP

Station : 22(2/2)

Operation Name : Take down Smartcard/B or Dummy Ver. : 1.00 Edit date : 2022/1/4



Pic.1

## Step :

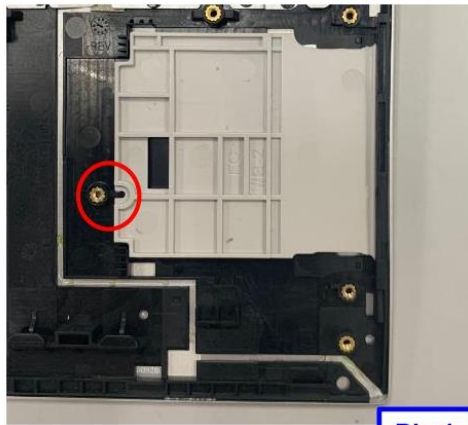
### For Smartcard/B

- 1. Take down smartcard screw M2x2L (6052B0388301) \* 3 (Pic 1)
  - ❖ screw can not be slipped
  - ❖ Torque :  $1.5 \pm 0.2 \text{Kgf} \cdot \text{cm}$

### For Smartcard Dummy

- 1. Take down Smartcard Dummy

Smart Card/B ←



Pic.1

Notice: Please inform production line leader or master if you found any abnormal..

Fixture list (Spec.)	Qty	Symbol							
Screw driver	1								
		Safe	Quality	Order	Fixture	Hear	Look	manual	Static

Lister : Zhou.gui-ling Issue Department : : Industrial Engineering Class



# Standard Operation Procedure

Document No. : HP EliteBook 840 & 845 G9 disassemble SOP

Station : 23(1/1)

Operation Name : Take down USB/B & Bracket

Ver. : 1.00 Edit date : 2022/1/4

## Step :

1. Take the Audio FPC of CNTR
2. Take down screw M2.0 x 4.0L (6052B0081901) \* 3  
(Pic1)
  - ❖ screw can not be slipped
  - ❖ Torque :  $1.5 \pm 0.2\text{Kgf} \cdot \text{cm}$
3. Take down Audio , BRKT & USB



Pic.1

Notice: Please inform production line leader or master if you found any abnormal..

Fixture list (Spec.)	Qty	Symbol							
Screw driver	1								
		Safe	Quality	Order	Fixture	Hear	Look	manual	Static

Lister : Zhou.gui-ling Issue Department : : Industrial Engineering Class





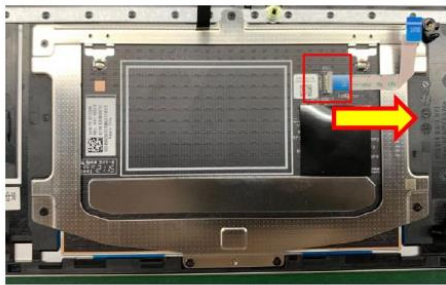
# Standard Operation Procedure

Document No. : HP EliteBook 840 & 845 G9 disassemble SOP

Station : 24(1/1)

Operation Name : Take down FFC and screw

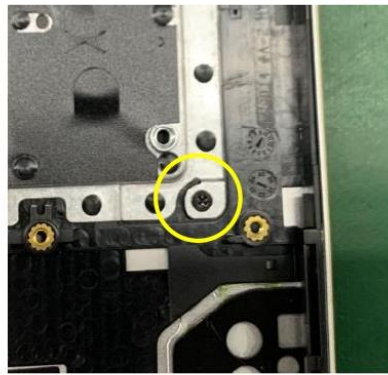
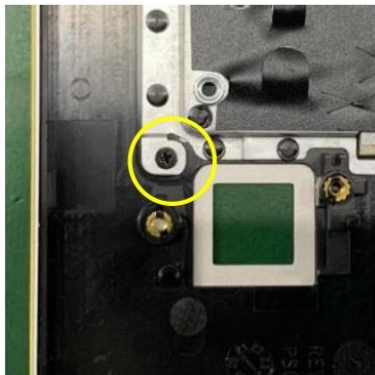
Ver. : 1.00 Edit date : 2022/1/4



Pic.1









## Step :

-  1. Take down FFC (pic 1)
-  2. Take down KB BTKT screw (6052B0508901) \*2 (pic2)
  - ❖ screw can not be slipped
  - ❖ Torque :  $1.0 \pm 0.2$ Kgf · cm



Pic.2

Notice: Please inform production line leader or master if you found any abnormal..

Fixture list (Spec.)	Qty	Symbol							
Screw driver	1								
		Safe	Quality	Order	Fixture	Hear	Look	manual	Static

Lister : Zhou.gui-ling Issue Department : : Industrial Engineering Class



# Standard Operation Procedure

Document No. : HP EliteBook 840 & 845 G9 disassemble SOP

Station : 25(1/1)

Operation Name : Take down click pad

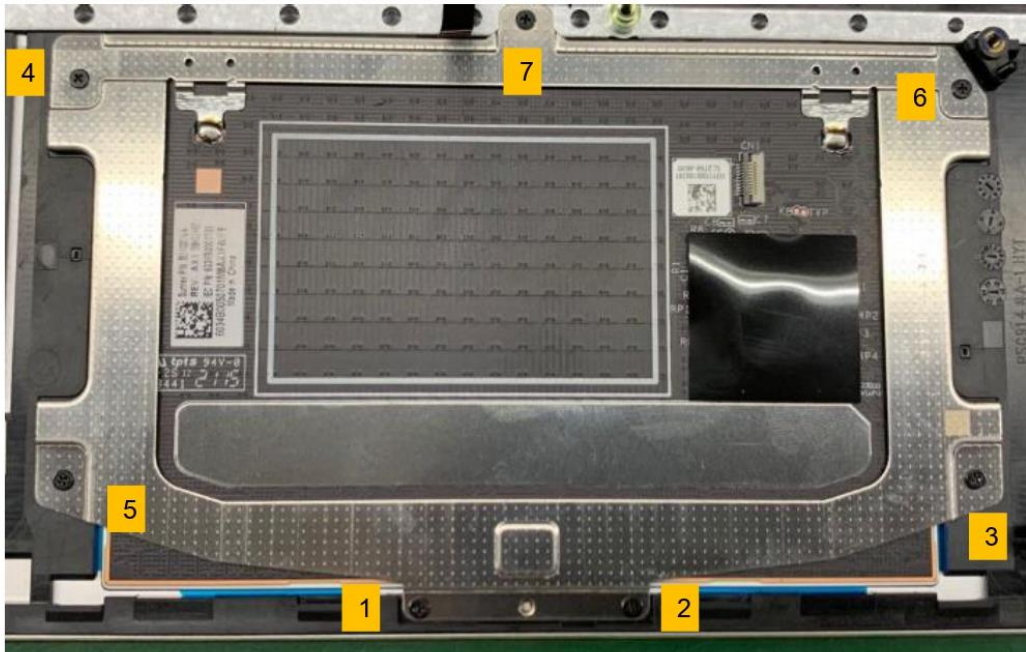
Ver. : 1.00 Edit date : 2022/1/4

## Step :

Touch pad/  
Click pad ←

1. Take down Click pad scerw  
(6052B0508901) \* 7

- ❖ screw can not be slipped
- ❖ Torque :  $1.0 \pm 0.3\text{Kgf} \cdot \text{cm}$



Notice: Please inform production line leader or master if you found any abnormal..

Fixture list (Spec.)	Qty	Symbol							
Screw driver	1								
		Safe	Quality	Order	Fixture	Hear	Look	manual	Static

Lister : Zhou.gui-ling Issue Department : : Industrial Engineering Class



# Standard Operation Procedure

Document No. : HP EliteBook 840 & 845 G9 disassemble SOP

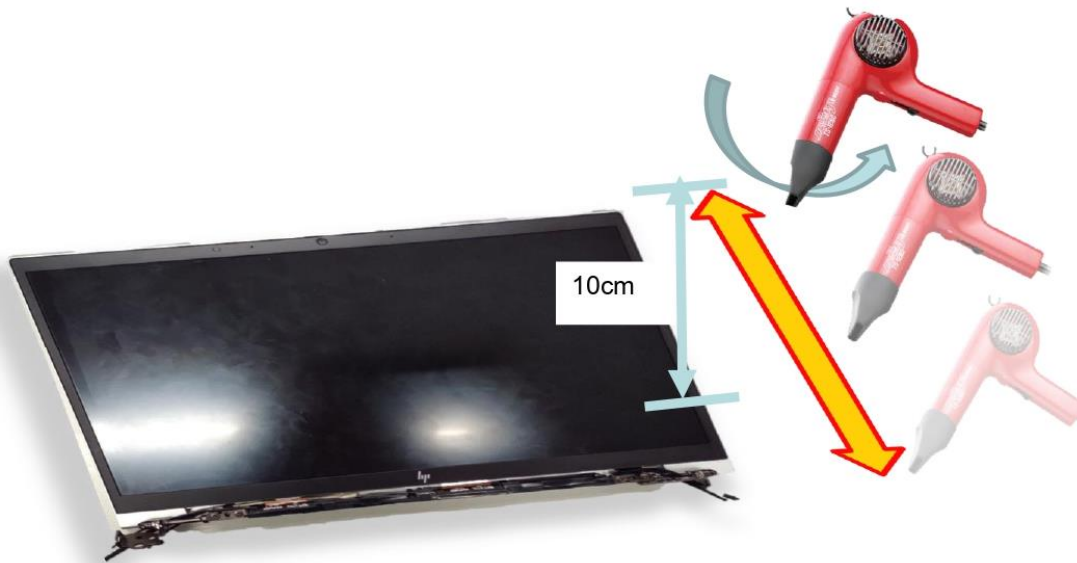
Station : 26(1/2)

Operation Name : Take down bezel

Ver. : 1.00 Edit date : 2022/1/4

## Step :

1. Hair dryer need to be around 10cm from B-cover.
2. When blowing, need to **swing and moving along bezel together**. Not focus on single spot to keep blowing.



Notice: Please inform production line leader or master if you found any abnormal..

Fixture list (Spec.)	Qty	Symbol							
Thickness jig Hair dryer	1 1								
		Safe	Quality	Order	Fixture	Hear	Look	manual	Static

Lister : Zhou.gui-ling Issue Department : : Industrial Engineering Class



# Standard Operation Procedure

Document No. : HP EliteBook 840 & 845 G9 disassemble SOP

Station : 26(2/2)

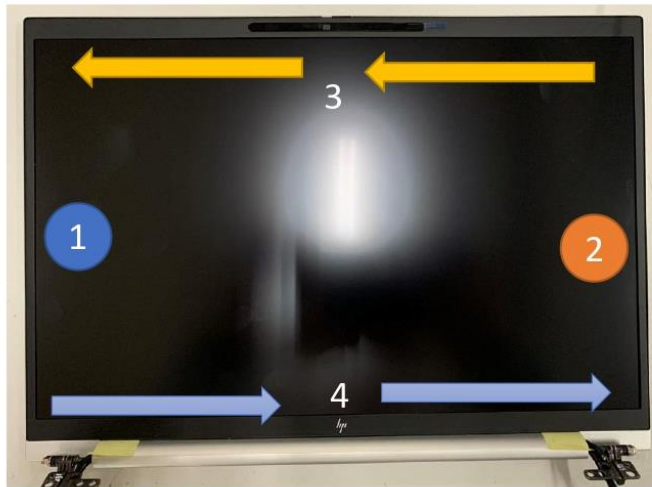
Operation Name : Disassembly Bezel-2

Ver. : 1.00 Edit date : 2022/1/4

## Step :

1. After heating the bezel 25s by 60 °C, then use the thickness jig to separate bezel and panel, disassembly priority as below showing 1~2~3~4,

**Attention: First, separate bezel adhesive, and then release bezel hook. Try to avoid pressing panel to damage glass while tear down bezel.**



Disassemble LCD Panel



Notice: Please inform production line leader or master if you found any abnormal..

Fixture list (Spec.)	Qty	Symbol							
Thickness jig Hair dryer	1 1								
		Safe	Quality	Order	Fixture	Hear	Look	manual	Static

Lister : Zhou.gui-ling Issue Department : : Industrial Engineering Class





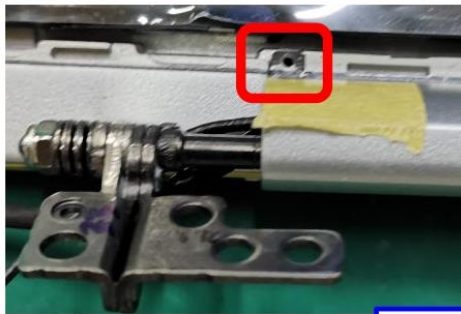
# Standard Operation Procedure

Document No. : HP EliteBook 840 & 845 G9 disassemble SOP

Station : 27(1/1)

Operation Name : Take down Hinge cap

Ver. : 1.00 Edit date : 2022/1/4



Pic.1

## Step :

1. Loosen hinge cap screw and disassembly hinge cap from unit.

- ❖ Torque :  $1.0 \pm 0.2$  kgf.cm
- ❖ screw can not be slipped.



Pic.2

Push toward right side



Pic.3

Notice: Please inform production line leader or master if you found any abnormal..

Fixture list (Spec.)	Qty	Symbol							
Screw driver	1								
		Safe	Quality	Order	Fixture	Hear	Look	manual	Static

Lister : Zhou.gui-ling Issue Department : : Industrial Engineering Class



# Standard Operation Procedure

Document No. : HP EliteBook 840 & 845 G9 disassemble SOP

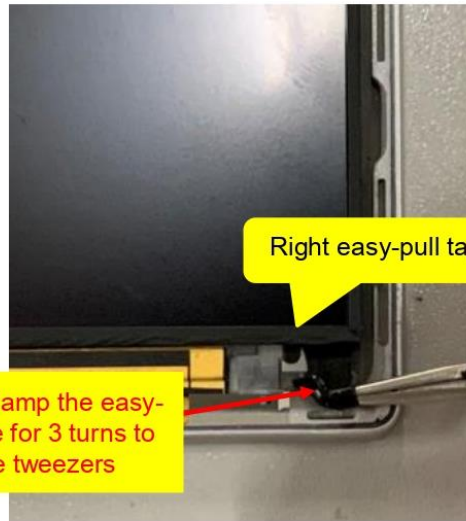
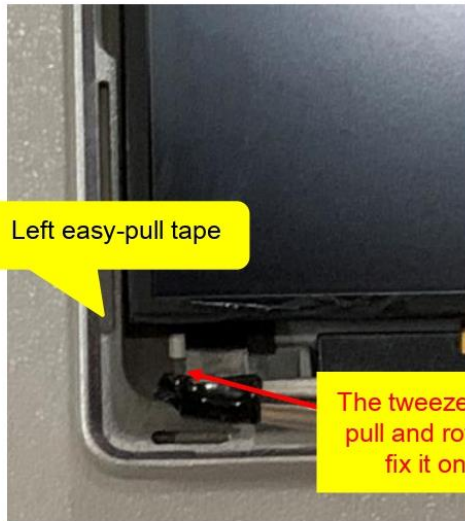
Station : 28(1/1)

Operation Name : Disassembly panel easy-pull

Ver. : 1.01 Edit date : 2021/6/20

## Step :

1. Use tweezer to clamp left easy-pull tape by 3 Turns , then pull down in parallel.
2. Use the same method to disassembly right easy-pull tape.



The tweezer clamp the easy-pull and rotate for 3 turns to fix it on the tweezers



Notice: Please inform production line leader or master if you found any abnormal..

Fixture list (Spec.)	Qty	Symbol							
		Safe	Quality	Order	Fixture	Hear	Look	manual	Static

Lister : Zhou.gui-ling Issue Department : : Industrial Engineering Class



# Standard Operation Procedure

Document No. : HP EliteBook 840 & 845 G9 disassemble SOP

Station : 29(1/1)

Operation Name : Take down e-DP Cable

Ver. : 1.00 Edit date : 2022/1/4

**Touch module PCB**

### Step :

1. Take the EDP cable out of the hook safety (pic 1)
2. Take the EDP Cable out of Panel CNTR ( Pic 2)

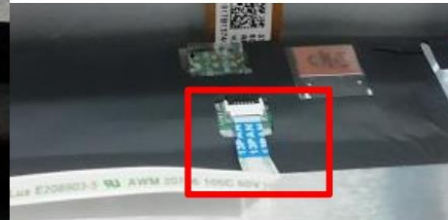
**For privacy**



**Pic.1**



**Pic.2**



**Pic.3**

Notice: Please inform production line leader or master if you found any abnormal..

Fixture list (Spec.)	Qty	Symbol							
		Safe	Quality	Order	Fixture	Hear	Look	manual	Static

Lister : Zhou.gui-ling Issue Department : : Industrial Engineering Class





# Standard Operation Procedure

Document No. : HP EliteBook 840 & 845 G9 disassemble SOP

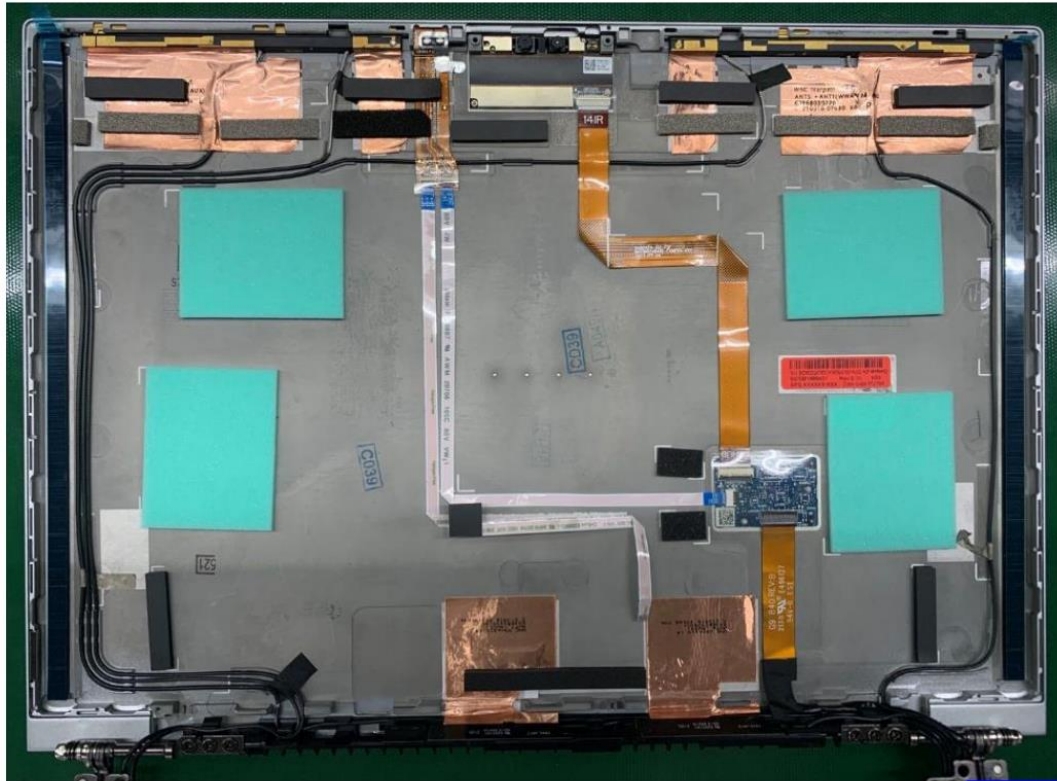
Station : 30(1/1)

Operation Name : Disassemble Sponge & gasket

Ver. : 1.00 Edit date : 2022/1/4

## Step :

1. Remove all sponge and gasket as shown below (Pic1)



**Pic.1**

Notice: Please inform production line leader or master if you found any abnormal..

Fixture list (Spec.)	Qty	Symbol							
		Safe	Quality	Order	Fixture	Hear	Look	manual	Static

Lister : Zhou.gui-ling Issue Department : : Industrial Engineering Class

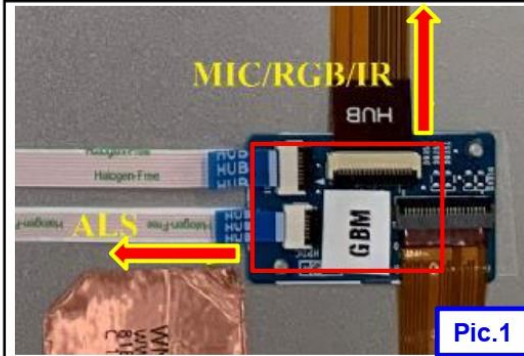


# Standard Operation Procedure

Document No. : HP EliteBook 840 & 845 G9 disassemble SOP

Station : 31(1/1)

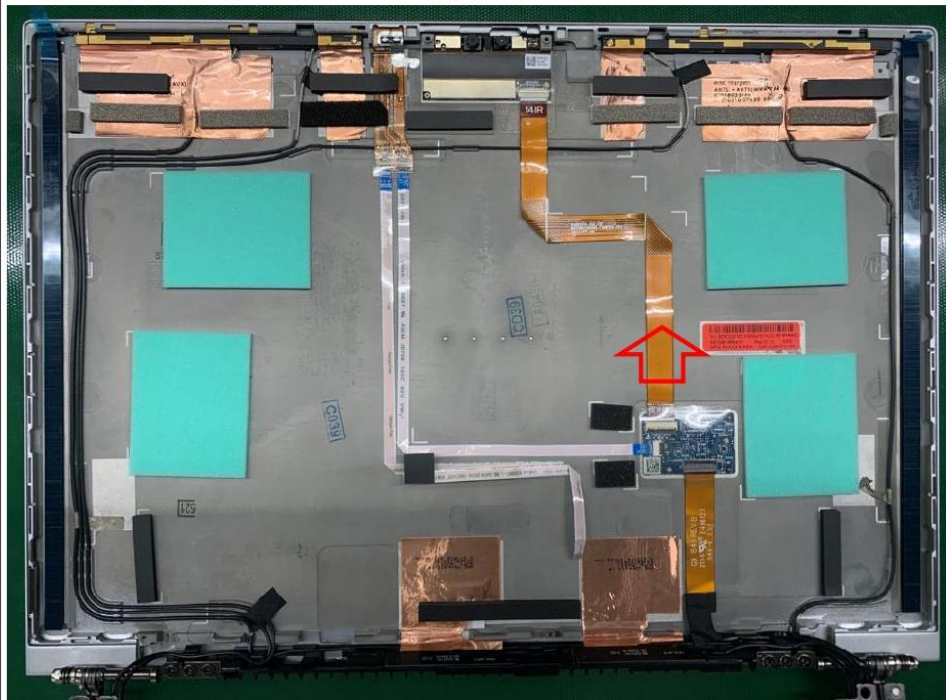
Operation Name : Disassemble Camera FPC & ALS FFC Ver. : 1.00 Edit date : 2022/1/4



**Pic.1**

## Step :

1. Remove the HUB/B and connect the FPC (Pic 1/Pic 2)



**Pic.2**

Notice: Please inform production line leader or master if you found any abnormal..

Fixture list (Spec.)	Qty	Symbol							
		Safe	Quality	Order	Fixture	Hear	Look	manual	Static

Lister : Zhou.gui-ling Issue Department : : Industrial Engineering Class



# Standard Operation Procedure

Document No. : HP EliteBook 840 & 845 G9 disassemble SOP


Station : 32(1/1)

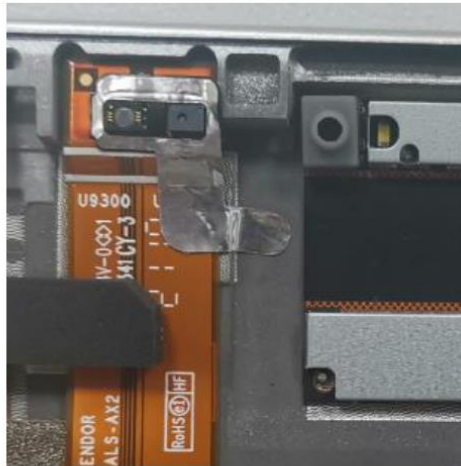
Operation Name : Disassemble ALS/B

Ver. : 1.00 Edit date : 2022/1/4











## Step :

-  1. Disassemble FFC
-  2. Disassemble ALS board aluminum foil and ALS board



Notice: Please inform production line leader or master if you found any abnormal..

Fixture list (Spec.)	Qty	Symbol							
									
		Safe	Quality	Order	Fixture	Hear	Look	manual	Static

Lister : Zhou.gui-ling Issue Department : : Industrial Engineering Class





# Standard Operation Procedure

Document No. : HP EliteBook 840 & 845 G9 disassemble SOP

Station : 33(1/1)

Operation Name : Disassemble Camera

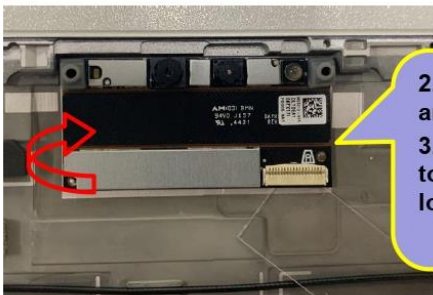
Ver. : 1.00 Edit date : 2022/1/4

## Step :

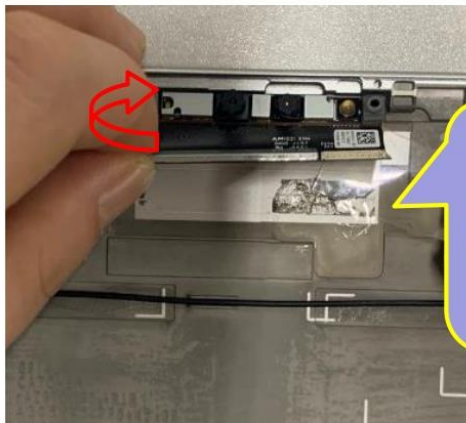
1. Take the camera out of the A-cover .



1. Take down FFC tape



2. Insert the tool between the lower side of the camera and the A-cover  
3. slide the harness across the underside of the camera to separate the glue from the A-cover (Disassemble the lower part of the camera)



3. Rotate the lower part of the camera up  
4. Insert the tool between the lower side of the camera and the A-cover (partially disassemble camera head)  
5. Remove the camera from the A-cover with both hands

Notice: Please inform production line leader or master if you found any abnormal..

Fixture list (Spec.)	Qty	Symbol							
Disassemble camera auxiliary fixture	1								
		Safe	Quality	Order	Fixture	Hear	Look	manual	Static

Lister : Zhou.gui-ling Issue Department : : Industrial Engineering Class



# Standard Operation Procedure

Document No. : HP EliteBook 840 & 845 G9 disassemble SOP

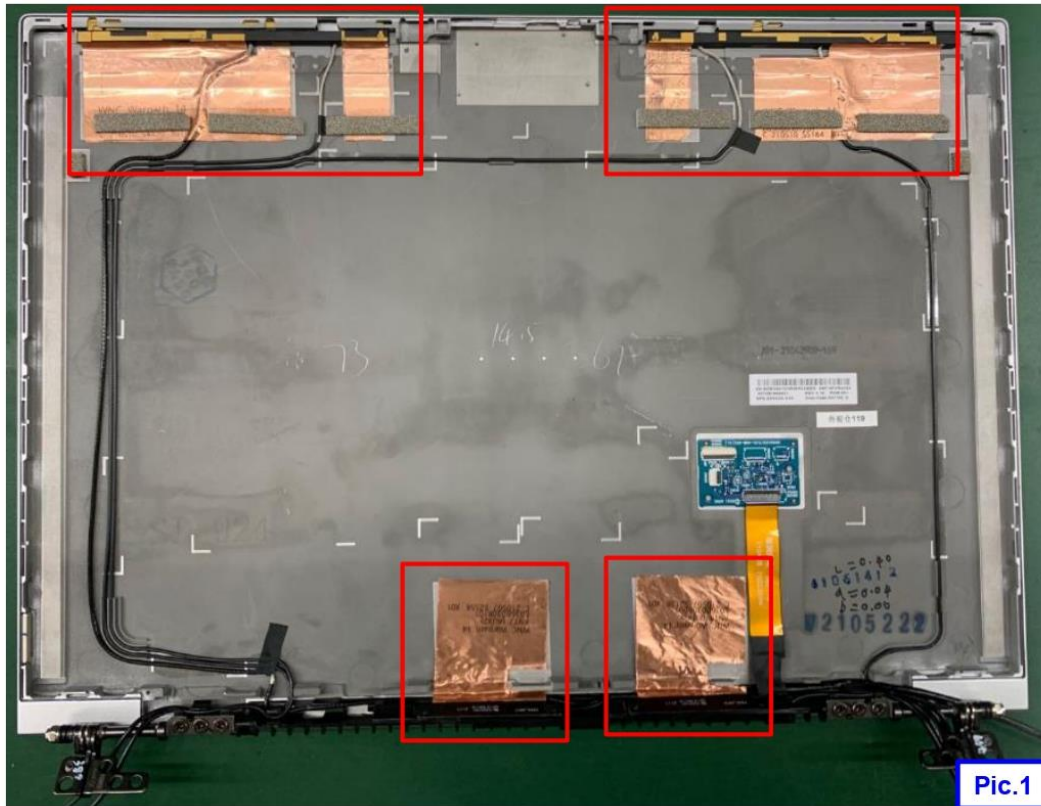
Station : 34(1/1)

Operation Name : Take down all the antenna

Ver. : 1.00 Edit date : 2022/1/4

## Step :

- 1. Take down all the antenna (Pic1)



Notice: Please inform production line leader or master if you found any abnormal..

Fixture list (Spec.)	Qty	Symbol							
Daniel bar	1								
		Safe	Quality	Order	Fixture	Hear	Look	manual	Static

Lister : Zhou.gui-ling Issue Department : : Industrial Engineering Class



# Standard Operation Procedure

Document No. : HP EliteBook 840 & 845 G9 disassemble SOP

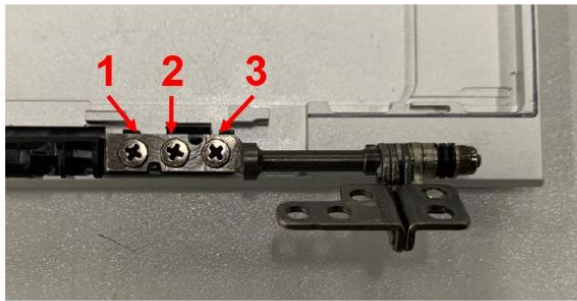
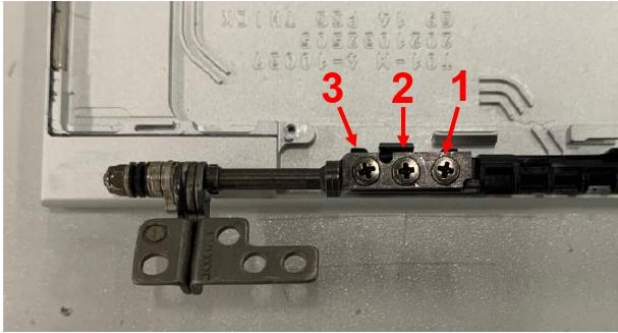
Station : 34(1/1)

Operation Name : Take down hinge screw

Ver. : 1.00 Edit date : 2022/1/4

## Step :

1. Take down left and right screw(6052B0139801) \*6  
❖ Torque :  $3.2 \pm 0.3\text{Kgf} \cdot \text{cm}$



Notice: Please inform production line leader or master if you found any abnormal..

Fixture list (Spec.)	Qty	Symbol							
电动起子	1								
		Safe	Qual ity	Ord er	Fix tur e	Hear	Loo k	man ual	Sta tic

Lister : Zhou.gui-ling Issue Department : : Industrial Engineering Class



