



AX5400

Multi-Gigabit Wi-Fi 6 Router

Faster. Broader. Unstoppable.



Compatible with
amazon alexa



Archer AX72 Pro



Warp-Speed Wi-Fi
up to 5400 Mbps[†]



Extensive Coverage
6 High-Performance Antennas



Connect More Devices
OFDMA + MU-MIMO^{†*}




Multi-Gigabit Internet
with Full Gigabit Ports

Highlights


Wi-Fi 6

Faster. Broader. Unstoppable.


The Archer AX72 Pro, based on the next generation 802.11ax Wi-Fi technology, takes your Wi-Fi to the next level while being backwards compatible with 802.11a/b/g/n/ac Wi-Fi standards.

- 


Gigabit Wi-Fi for 8K Streaming

Equipped with an advanced 4×4 HT160 structure for peak speeds at 4804 Mbps on the 5 GHz band, giving you full access to multiple 8K streaming and high-speed downloading.^{†‡}
- 

Connect Numerous Devices

OFDMA and MU-MIMO transmit data to multiple devices simultaneously across 6 streams, drastically reducing lag and allowing more applications to run at the same time.[‡]
- 

Smart Power Saving


Target Wake Time schedules the connection time of battery-powered devices to reduce their power consumption.[‡]
- 

Backwards Compatible


Take your Wi-Fi to the next level while being backwards compatible with 802.11a/b/g/n/ac Wi-Fi standards.

TP-Link HomeShield


TP-Link’s premium security services keep your home network safe with cutting -edge features for network and IoT protection.*

- 


Network Protection

Detect cyber threats to keep your privacy and connected devices well protected.
- 

Quality of Service (QoS)

Prioritize your bandwidth needs to get a better networking experience.
- 

Parental Controls

Manage online time and block inappropriate content to keep families healthy online.
- 

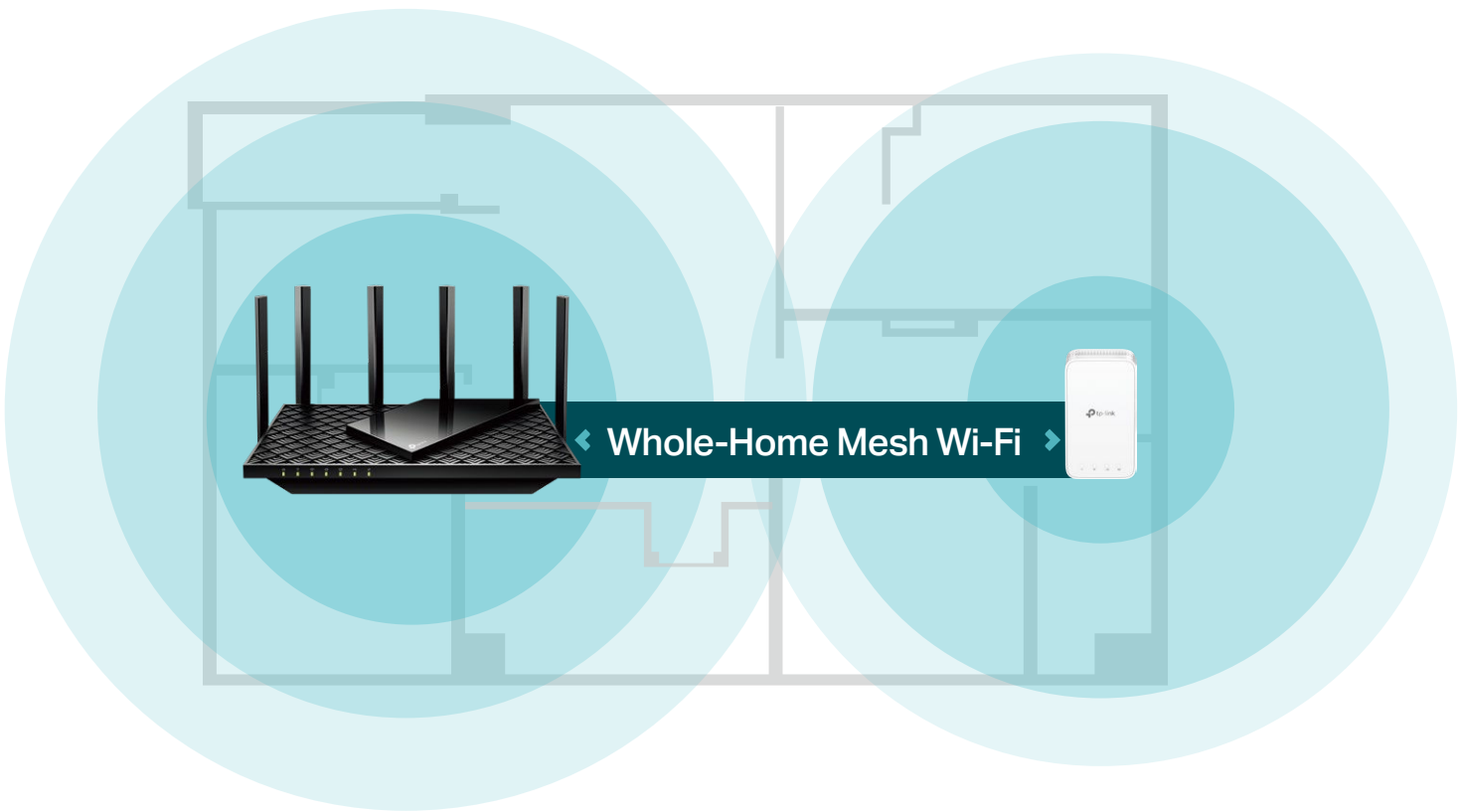
Comprehensive Reports

Gain full statistics and insights to help you know your home network better.

Highlights

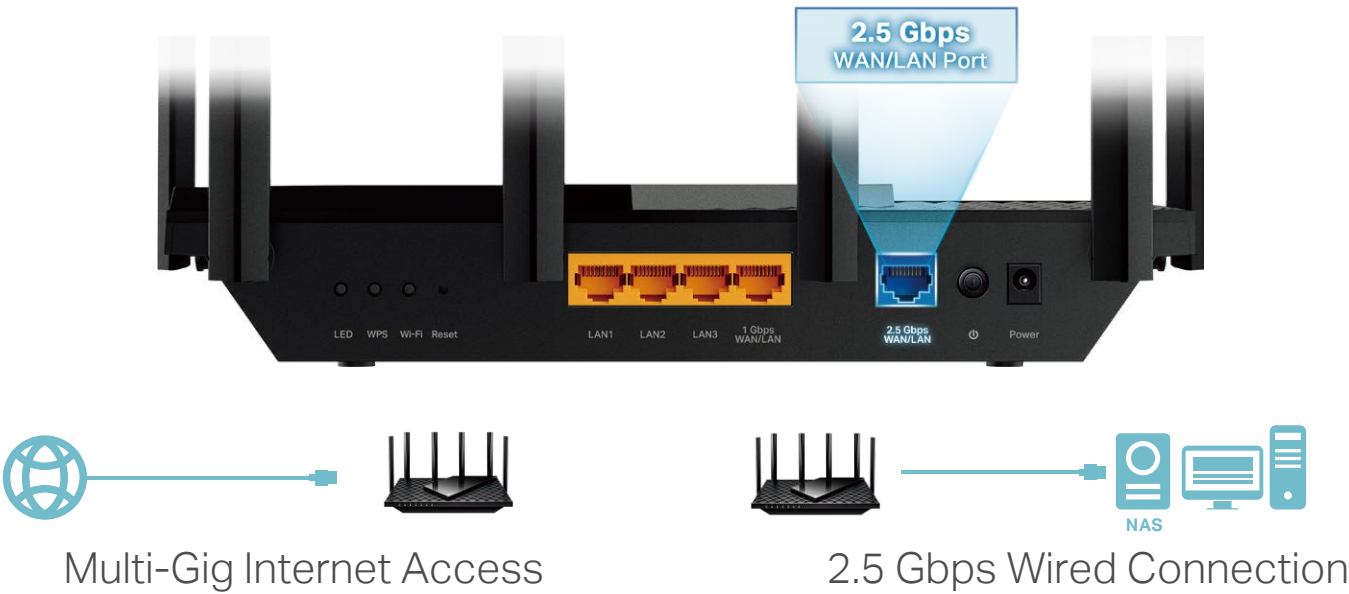
Flexible Whole-Home Wi-Fi

Six high-performance antennas and Beamforming deliver broad coverage. Furthermore, Archer AX72Pro supports OneMesh™ to form seamless whole-home coverage, preventing drops and lag when moving between signals.



Multi-Gig Internet Connections

A 2.5 Gbps port and 1 Gbps port make full use of gigabit speeds from your local ISP. Break through the 1G bottleneck and drive your devices to peak performance. WAN/LAN support gives you remarkable flexibility to tailor both ports to fit your network's needs.

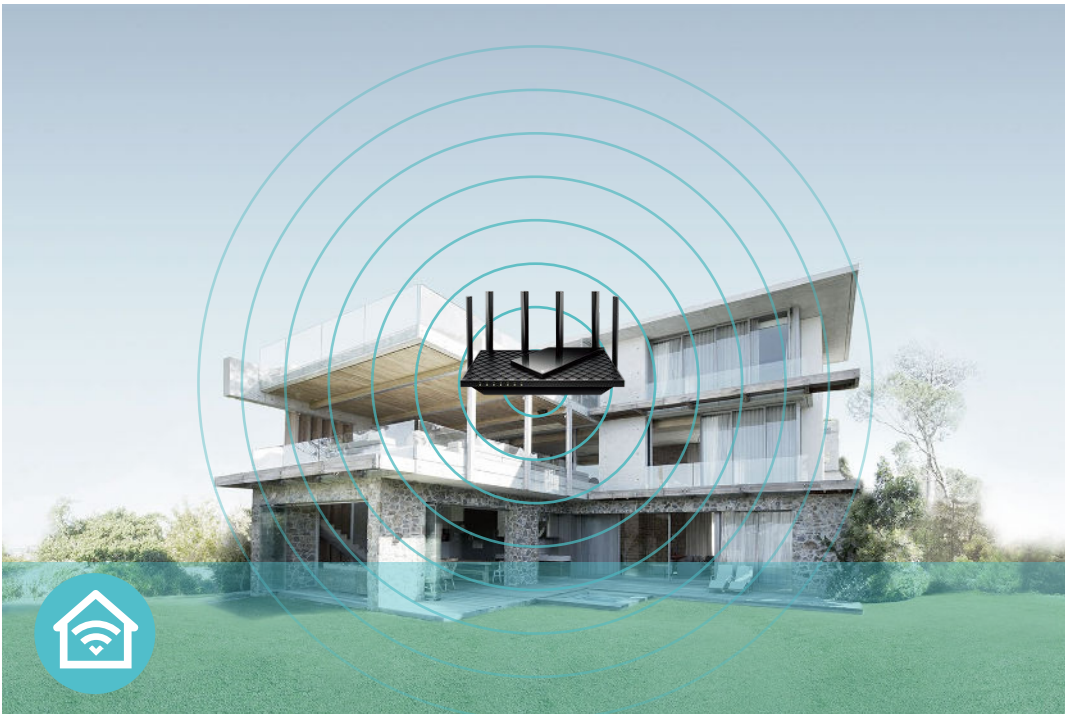


Features



Speed

- **Warp-Speed Wi-Fi** – 5.4 Gbps Wi-Fi for faster browsing, streaming, and downloading—all at the same time[†]
- **Wi-Fi 6 Technology** – Wi-Fi 6 (802.11ax) features advanced technologies, including OFDMA, MU-MIMO, HT160, and 1024-QAM, drastically increasing the speed and efficiency of your entire network[‡]
- **Connect More, Stay Fast** – Supports MU-MIMO and OFDMA to reduce congestion and quadruple your average throughput[§]
- **Multi-Gig Internet Connection** – A 2.5 Gbps port and 1 Gbps port make full use of gigabit speeds from your local ISP. Break through the 1G bottleneck and drive your devices to peak performance.



Wi-Fi Range

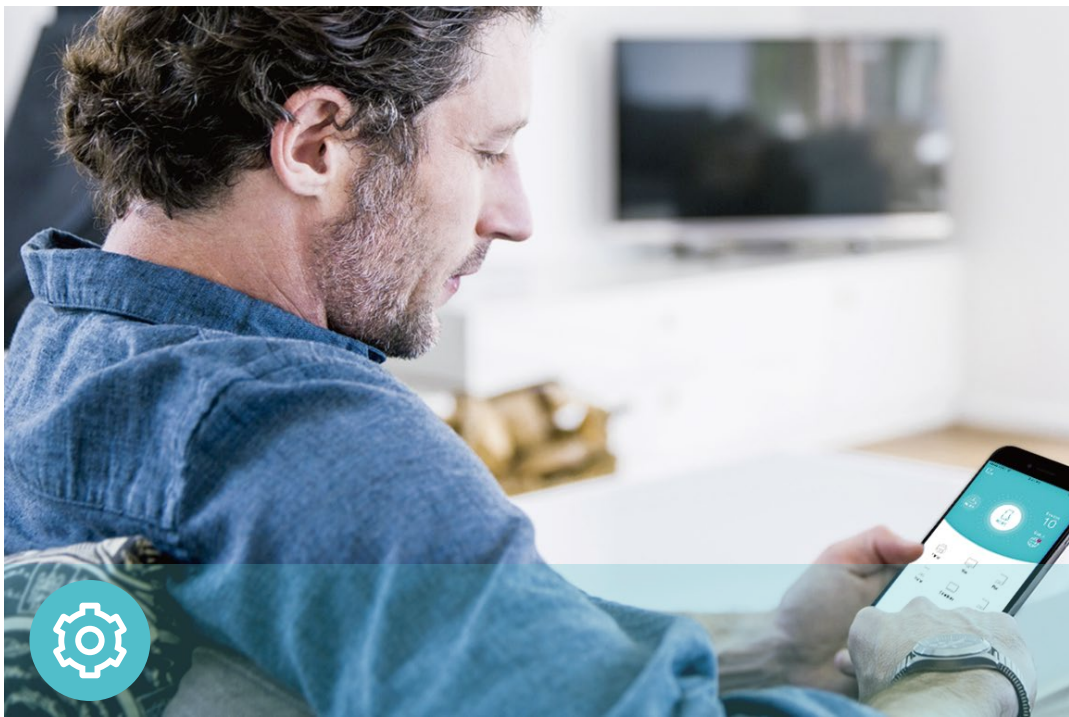
- **Ultimate Range Wi-Fi** – Six high-gain external antennas deliver a Wi-Fi signal to every corner of your home, making all of your connections more efficient and stable
- **Beamforming Technology** – Concentrates Wi-Fi signals towards individual devices to ensure stronger connections
- **Seamless OneMesh network** – Transfer between signals without any drops or lag and manage your whole network using a centralized panel



Reliability

- **Secure VPN Access** – Connects to a private network with a safe and secure OpenVPN, PPTP VPN and L2TP VPN connection
- **Airtime Fairness** – Balances bandwidth of connected devices to improve overall throughput and efficiency
- **Smart Connect** – Intelligently switches each device's connection to the optimum available Wi-Fi band

Features



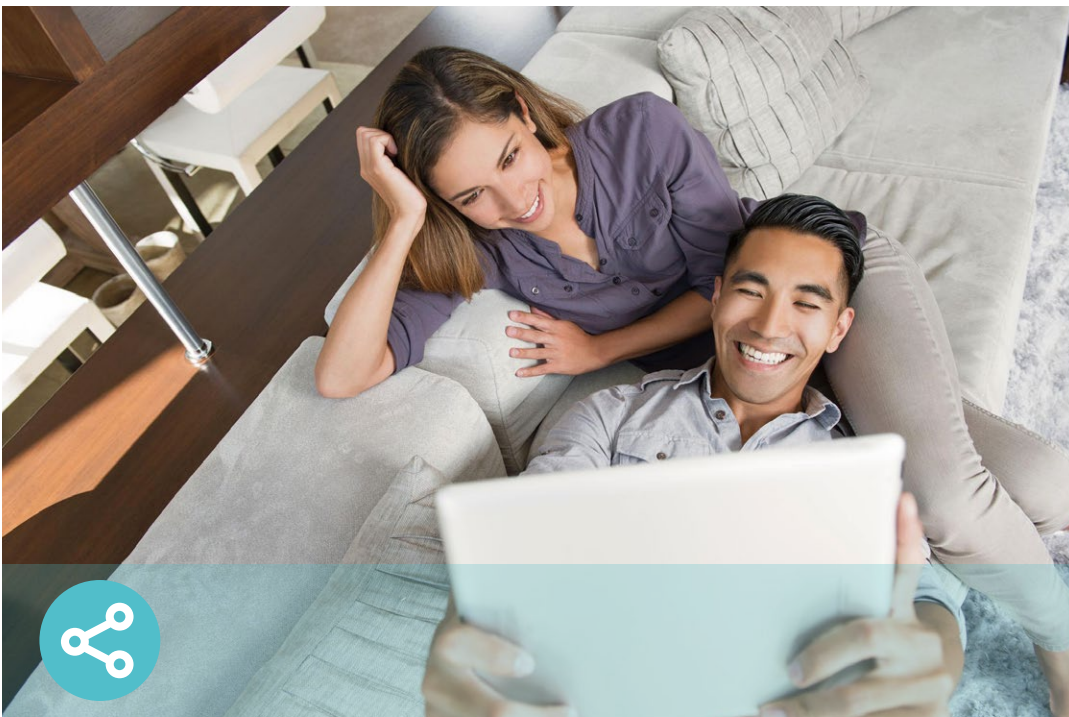
Ease of Use

- Intuitive Web UI – Ensures quick and simple installation without hassle
- WPS (Wi-Fi Protected Setup) – Help you to quickly and securely connect your devices to the router's network with a tap
- Power On/Off – Conveniently power on or off your router as required
- Hassle-free Management with Tether App – Network management is made easy with the TP-Link Tether app, available on any Android and iOS device
- Works with Amazon Alexa and Google Assistant – Utilize Amazon Alexa and Google Assistant to control everything via voice commands to enjoy truly intelligent life.



Security

- HomeShield – TP-Link's premium security services keep your home network safe with cutting-edge features for network and IoT protection
- Guest Network – Provides separate access for guests to secure the home network
- Access Control – Establishes a whitelist or blacklist to allow or restrict certain devices to access the internet
- Encryptions for Secure Network – WPA/WPA2-Personal, WPA2/WPA3-Personal, WPA/WPA2-Enterprise encryptions provide active protection against security threats



Easy Sharing

- USB Port – Connects external storage devices to rapidly share files, photos, and videos
- Built-in Media Server – Allows you to play music, watch videos and view photos from any device on your network

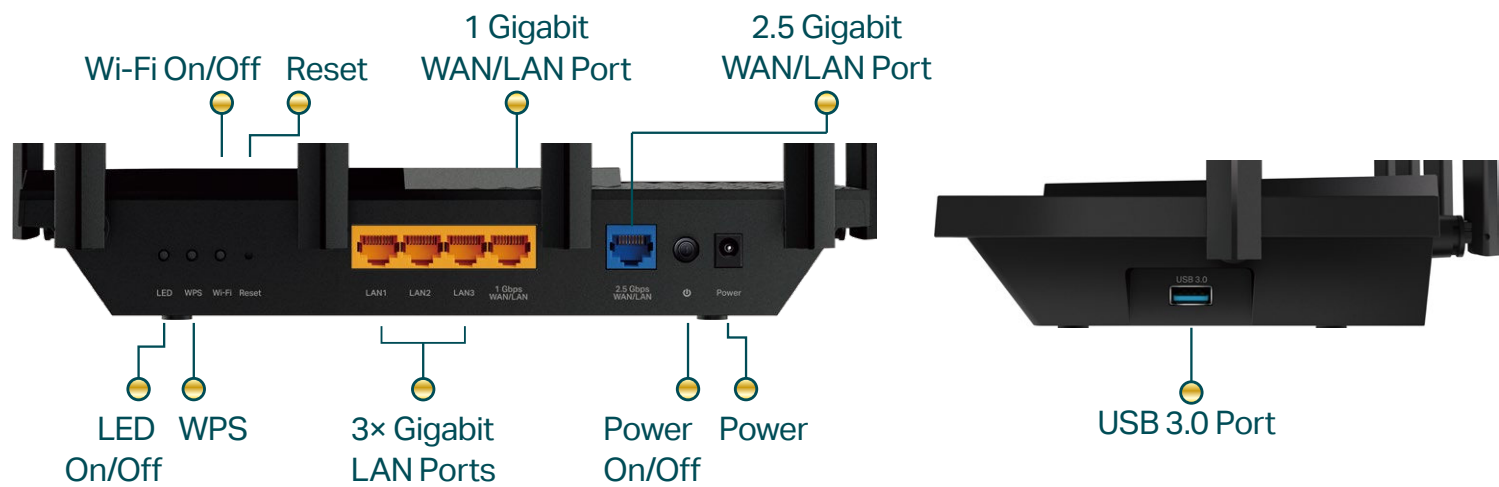
Specifications

Wireless

- Standards: IEEE 802.11ax/ac/n/a 5 GHz, IEEE 802.11ax/n/b/g 2.4 GHz
- WiFi Speeds: 5 GHz: 4804 Mbps (802.11ax, HE160), 2.4 GHz: 574 Mbps (802.11ax)
- WiFi Range: 6× Fixed High-Performance Antennas, Beamforming, High-Power FEM, 4T4R
- WiFi Capacity: Dual-Band, 4×4 MU-MIMO, OFDMA, Airtime Fairness, DFS, 6 Streams
- Working Modes: Router Mode, Access Point Mode

Hardware

- Processor: 1 GHz Dual Core CPU
- Ethernet Ports: 1× 2.5 Gigabit WAN/LAN Port, 1× 1 Gigabit WAN/LAN Port, 3× Gigabit LAN Ports
- USB Support: 1× USB 3.0 Port
- Buttons: LED On/Off Button, WPS Button, Wi-Fi On/Off Button, Reset Button, Power On/Off Button



Security

- WiFi Encryption: WPA, WPA2, WPA3, WPA/WPA2-Enterprise (802.1x)
- Network Security: SPI Firewall, Access Control, IP & MAC Binding, Application Layer Gateway, HomeShield Security
- Guest Network: 1× 5 GHz Guest Network, 1× 2.4 GHz Guest Network
- VPN Server: OpenVPN, PPTP, L2TP
- VPN Client: OpenVPN, PPTP, L2TP

Software

- Protocols: IPv4, IPv6
- Service Kits: HomeShield
- OneMesh: Supported
- Parental Controls: HomeShield Parental Controls
- WAN Types: Dynamic IP, Static IP, PPPoE, PPTP, L2TP
- Quality of Service: QoS by Device
- Cloud Service: Auto Firmware Upgrade, TP-Link ID, DDNS
- NAT Forwarding: Port Forwarding, Port Triggering, DMZ, UPnP, Virtual Server
- DDNS: TP-Link, NO-IP, DynDNS


Specifications

Physical

- Dimensions (W×D×H): 10.7 × 5.8 × 1.9 in (272.5 × 147.2 × 49.2 mm)
- Package Contents:
 - Wi-Fi Router Archer AX72 Pro
 - Power Adapter
 - RJ45 Ethernet Cable
 - Quick Installation Guide

Other

- System Requirements:
 - Internet Explorer 11+, Firefox 12.0+, Chrome 20.0+, Safari 4.0+, or other JavaScript-enabled browser
 - Cable or DSL Modem (if needed)
 - Subscription with an internet service provider (for internet access)
- Certifications: FCC, CE, RoHS
- Environment:
 - Operating Temperature: 0°C~40°C (32°F ~104°F)
 - Operating Humidity: 10%~90% non-condensing



For more information, please visit

<http://www.tp-link.com/products/details/Archer-AX72 Pro.html>

or scan the QR code left

Test Data

- WiFi Transmission Power:
 - CE: <20dBm{2.4GHz}
 - <23dBm{5.15GHz~5.35GHz}
 - <30dBm{5.47GHz~5.725GHz}
 - FCC: <24dBm{5.25GHz~5.35GHz&5.47GHz~5.725GHz }
 - <30dBm{2.4GHz &5.15GHz~5.25GHz&5.725GHz~5.825GHz }
- WiFi Reception Sensitivity:
 - 2.4GHz:
 - 11g 6Mbps:-96dBm
 - 11g 54Mbps:-79dBm
 - 11ax HE20 MCS11:-65dBm
 - 11ax HE40 MCS11:-63dBm
 - 5GHz:
 - 11a 6Mbps:-97dBm
 - 11a 54Mbps:-80dBm
 - 11ax HE20 MCS11:-66dBm
 - 11ax HE40 MCS11:-64Bm
 - 11ax HE80 MCS11:-61dBm
 - 11ax HE160 MCS11:-58dBm

[†]Maximum wireless signal rates are the physical rates derived from IEEE Standard 802.11 specifications. Actual wireless data throughput, wireless coverage, and number of connected devices are not guaranteed and will vary as a result of network conditions, client limitations, and environmental factors, including building materials, obstacles, volume and density of traffic, and client location.

[‡]Use of 802.11ax (Wi-Fi 6) and its features including OFDMA, 1024-QAM, HT160, and Target Wake Time requires clients support the corresponding features. Actual power reduction by Target Wake Time may vary as a result of network conditions, client limitations, and environmental factors.

[§]The 802.11ax white paper defines standardized modifications to both the IEEE 802.11 physical layers (PHY) and the IEEE 802.11 Medium Access Control (MAC) layer as enabling at least one mode of operation capable of supporting improvement of at least four times the average throughput per station (measured at the MAC data service access point) in a dense deployment scenario.

[¶]HomeShield includes the Free Basic Plan. Fees apply for the Pro Plan. Visit tp-link.com/homeshield for more information

^{*}Use of MU-MIMO and/or WPA3 requires clients to also support the corresponding features.

^{**}This router may not support all the mandatory features as ratified in Draft 3.0 of the IEEE 802.11AX specification.

^{***}Further software upgrades for feature availability may be required.

©2022 TP-Link

TP-Link AX5400 Multi-Gigabit Wi-Fi 6 Router Archer AX72 Pro