

THE  
GRYPHON



**OWNERS MANUAL**  
**THE GRYPHON DM 100**

---

# INTRODUCTION

---

First of all, we would like to thank you for purchasing the DM100 Dual Mono Amplifier created by Gryphon Audio Designs for your listening pleasure.

Because of the sophisticated nature of the Gryphon DM100 with many original, highly advanced solutions to the problems of home music reproduction, we recommend that you read this manual in its entirety before connecting the DM100 to your system.

The Gryphon DM100 is a refined product of leading edge audio technology. This manual will enable you to fully utilize and appreciate its quality.

---

## UNPACKING

---

Obviously, the purpose of packing materials in the transportation of heavy power amplifiers is to protect the product on its perilous journey from manufacturer to proud owner. Unfortunately, in our experience this often results in sprained backs and bleeding fingers at the moment of truth: the uncrating of a hefty power amplifier.

Gryphon took a fresh look at the problem and designed a unique transportation case that combines full protection with new levels of user-friendliness.

**The carton should never be lifted upside down.** The handles have been expressly placed to discourage this kind of handling.

Although the carton offers a high degree of protection, care should be taken to avoid dropping it.

The DM100 carton has two locks on one side for convenient transportation over short distances without tape or wrap-around bands.

When the carton is unlocked, two red handles can be seen at each end.

The DM100 rests in a hammock that allows you **and a strong friend** to remove the amplifier without touching it and without having to bend all the way down to the floor to get a grip under the amplifier.

**Do not try this alone.**

**Keep your back straight. Lift by bending and stretching your legs.**

Grip the red handles and lift the hammock and the DM100 out of the carton. If the hammock sticks to the carton, place a foot on one of the outside wooden handles.

Place the hammock and the DM100 flat on the floor. The DM100 has sturdy handles on both front and rear. Remove the DM100 from the foam corners.

Keep all packing material in a dry place for safe future transportation.

# INSTALLATION

The DM100 is a high bias Class A design and should be placed so that air may circulate freely around the heatsinks. The DM100 is equipped with tall feet for free air circulation, even on thick carpets. The feet also allow you to push the DM100 across the floor without lifting it.

## AC POWER

Before installation, you must ensure that sufficient current is available from your domestic AC power supply.

Minimum: 8A for 220/240 V

Minimum: 16A for 110/120 V

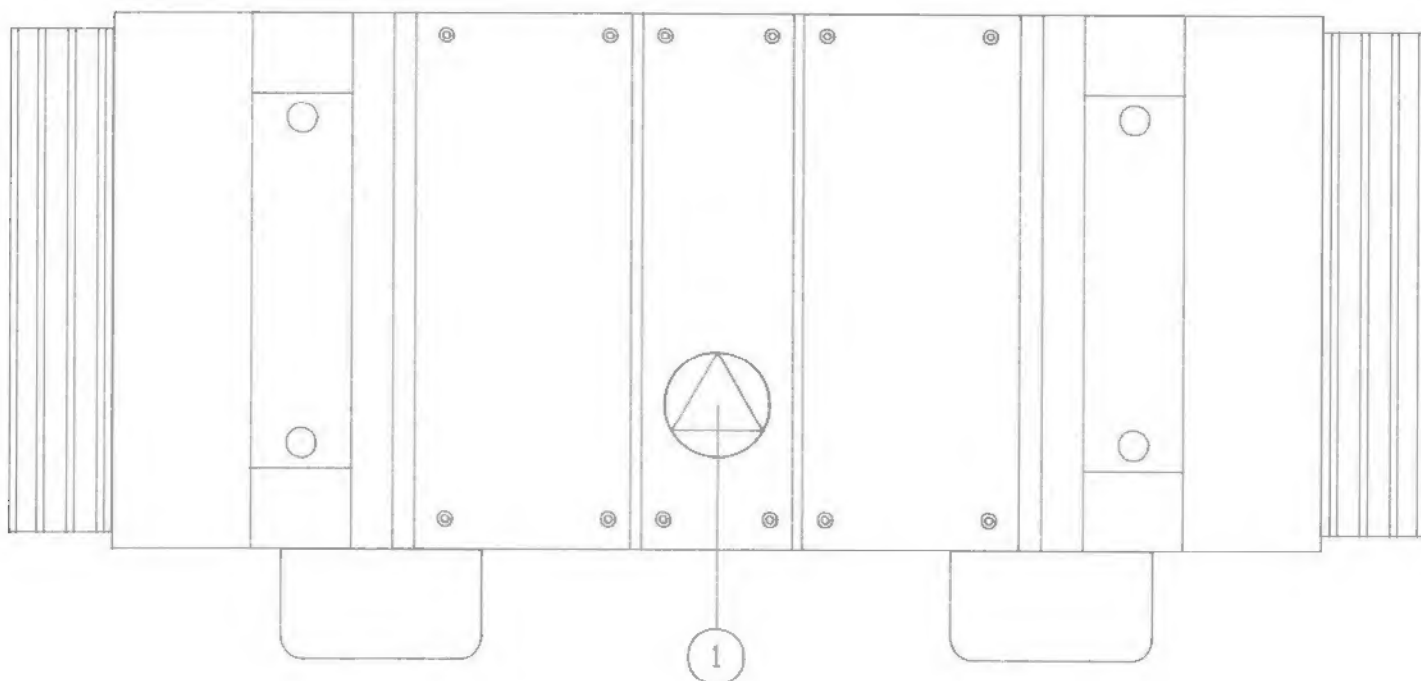
The DM100 should ideally be connected to a separate group independent of other equipment.

The DM100 is designed for use with a three-pin AC connection with separate ground, but may be used with alternative grounding. *See section on grounding under rear panel functions.*

**Do not run long, thin extension cords.**

AC power is dangerous and should not be experimented with by untrained persons. If in doubt, consult a qualified electrician.

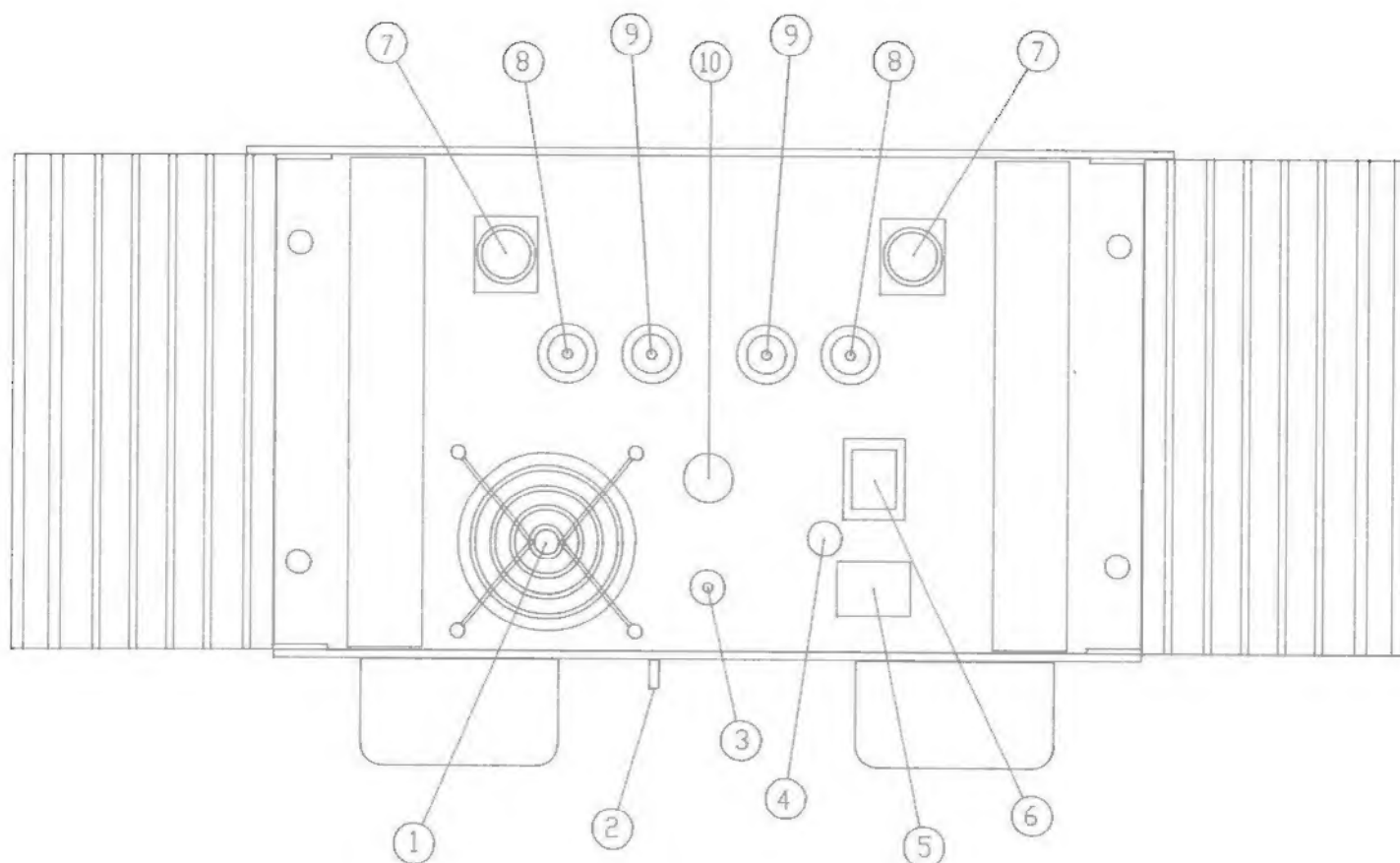
Front panel functions:



# 1. ON/STANDBY

When in standby, there is still AC inside the amplifier. For full shutdown use the main AC power switch on the rear or remove AC cord.

Rear panel functions:



# 4. Fuseholder: 220/240 8A sloblo, 110/120 16A sloblo

**Always use only fuses of the correct value. Fuses must never be bypassed.**

Use only a dedicated AC power cord. Do NOT use loudspeaker cable or other wire not expressly designed to carry high current. Improper cables or cables of insufficient gauge will generate heat and the insulation may melt with disastrous results.

AC power cords DO have an audible effect on sound quality, but experiments should be carried out with due consideration to safety.

# 6. Main AC power switch.

ON – green light. OFF – no light. *See also front panel function.*

# 10. Bias adjustment.

The selector determines the degree of class A operation. In the 100% mode the DM100 provides 100W of PURE CLASS A power into an 8 ohm load. The alternative positions (50/75%) do not reduce total output power, but bias power output more heavily towards class A/B.

With very efficient loudspeakers, 100W of pure Class A might rightly be considered overkill. With a 75% Class A bias, efficient speakers will be driven in Class A most of the time.

The 50% mode, however, is only recommended with extremely efficient loudspeakers (horn systems) or when using the DM100 as bass amplifier in a bi-amped system.

Naturally, lowering the Class A operation range reduces AC power consumption at idle. When evaluating the sonic effect of the three bias adjustment modes, it must be taken into consideration that the DM100 requires time to settle, when bias is changed.

Bias may be adjusted with the DM100 turned on. However, we recommend that bias adjustment be made once and for all during initial installation.

#### # 7. Balanced Inputs:

Pin #1 ground

#2 hot

#3 cold

The Gryphon DM100 provides only balanced inputs. There are no alternative single-ended RCA standard inputs in parallel with the balanced inputs.

Should you choose to employ the Gryphon DM100 with an unbalanced signal source, high quality adaptors are included to connect single-ended cable to the balanced input. The necessary change of pin connection is made inside the adaptor. This is a superior solution to parallel single-ended phono sockets which would inevitably introduce more cable and soldering in the signal path.

# 8. Plus terminal to loudspeaker.

# 9. Minus terminal to loudspeaker.

The heavy-duty five-way bindingposts are custom-designed by Gryphon for use with heavy-gauge bare wire, cable forks, banana connectors or biwiring with any combination of cable terminations. The rotating collar on the terminal keeps bare wire from rotating when the terminal is being tightened.

# 2. Grounding selector

If your AC supply does not have a separate ground connection, the grounding selector should point straight ahead. If separate AC grounding or a true earth connection (a pole in the ground) is available, then the position of the selector is unimportant.

Do not connect other equipment to the DM100 grounding post.

In order to utilize the AC filtering section of the DM100, connection to ground is essential.

Generally, overall performance can be greatly improved with proper grounding. The degree of improvement will depend on local conditions.

# 3. Ground terminal.

---

## THE TWO CHANNEL MONO AMPLIFIER (DM100 VBM)

---

Many Audiophiles have discovered the benefits of bi-amping loudspeakers. Bi-amplification is an option offered by most high end loudspeakers which allows separate power amplifier channels to drive the midrange/tweeter and bass sections. Usually, one stereo amplifier drives the upper frequency range of both speakers, while a second stereo amplifier powers both bass sections. This is generally referred to as horizontal bi-amping.

During the long gestation of the Gryphon DM100, we found that bi-amping with one stereo amp per speaker (vertical bi-amping) is better than using even a much larger single channel amplifier driving the whole frequency range. Listening tests proved conclusively that bi-amping with a pair of 100 watt stereo amplifiers (4 amplifiers) is superior to a pair of 200 watt monoblocks (2 amplifiers) driving the speakers full range.

If you wish to upgrade your system to bi-amped mode with a separate DM100 for each speaker at a later date, the channels can be dedicated to their specific frequency ranges. Instead of left and right, the two channels can be designated high and low, with the low channel optimized for bass amplification. Your national Gryphon distributor can make this conversion free of charge in connection with the purchase of a second Gryphon DM100.

---

## BURN-IN & WARM-UP

---

Your Gryphon DM100 has been thoroughly tested and burned in before shipping. Performance will, however, continue to improve during the first 40-50 hours of normal use. After this period, the DM100 will reach optimum performance 20-30 minutes after being switched on.

---

# MAINTENANCE

---

We take great pride in the finish of every Gryphon product and our meticulous inspection procedures ensure that every product that reaches the consumer lives up to the highest standard humanly possible. Gryphon Audio products are not made on automated assembly lines. They are handcrafted and built by real people who care.

## **Aluminium surfaces may be cleaned with a damp cloth.**

Acrylic surfaces should only be wiped gently with a very soft, dry cloth. Black acrylic reveals even the smallest scratches. Therefore, we enclose a fibreglass polish which should remove small scratches when applied with the fingertips and polished carefully with a very soft cloth. Final buffing should be carried with a very soft, clean, dry cloth.

Do not use spirits or aggressive fluids.

Fingerprints may be removed with a damp cloth. Do not use paper tissue.

---

---

# THE DM 100 PROTECTION SYSTEM

---

Gryphon has designed a unique comprehensive protection system with no circuit breakers in the signal path.

## **DC and HF**

When DC or HF from the source components is detected, the DM 100 will mute immediately. Normal operation will resume when the error condition is corrected.

## **Overheating**

When excessive heat dissipation is detected, the thermal sensor will mute the DM 100. Normal operation will resume when the temperature is within safe operating limits.

## **Short circuit**

Special care should be taken at all times to avoid shorting the loudspeaker outputs. If a short circuit should occur, the DM 100 will open an internal (not user-replaceable) fuse. Contact your dealer/distributor for service.

We are aware that the Gryphon DM 100 is the choice of the experienced audiophile, so please bear with us while we repeat certain ground rules:

## **Turn On Procedure**

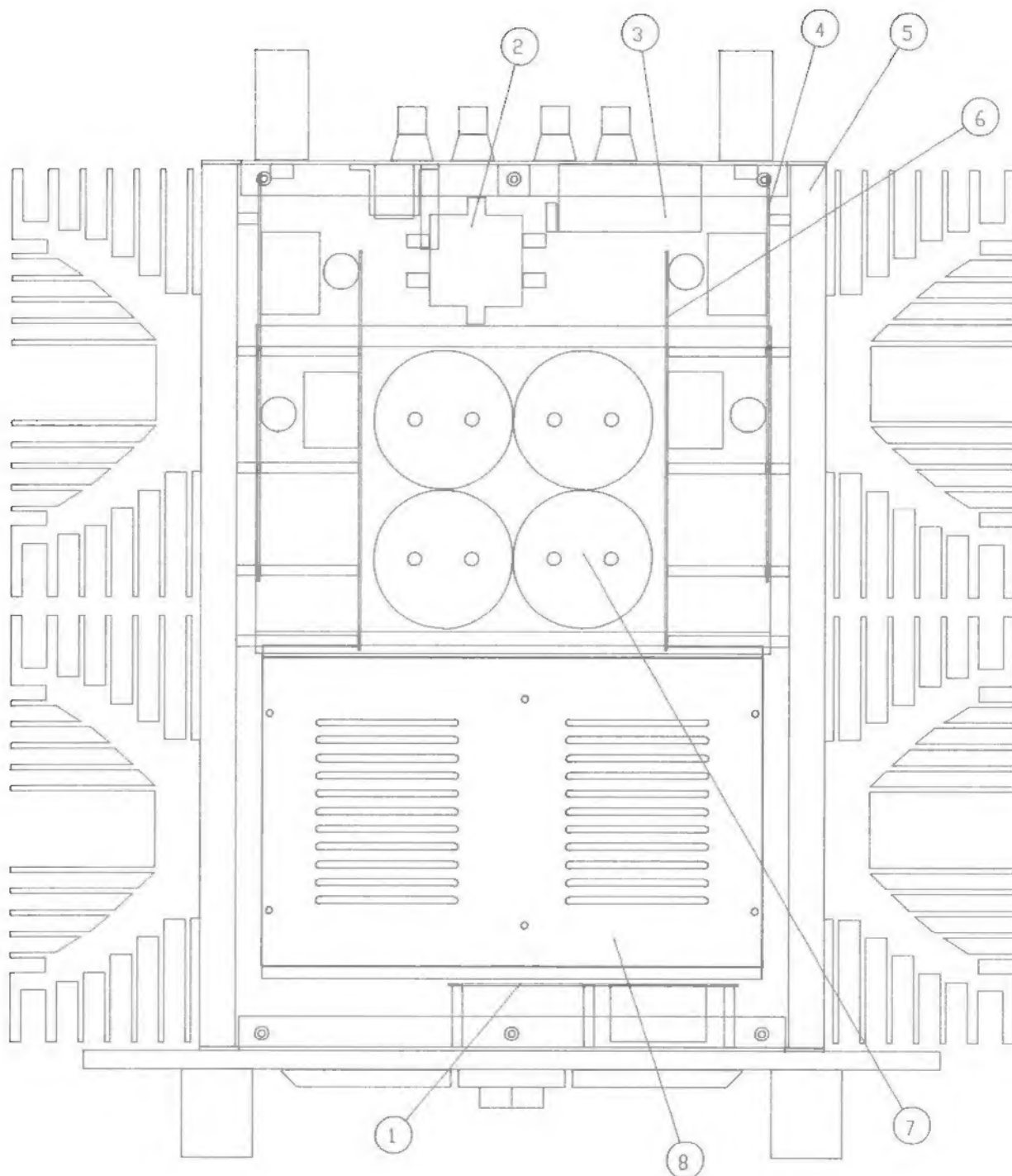
1. Turn on source components (turntable, CD player, etc.).
2. Turn on preamplifier.
3. Allow a few moments for components to stabilize. (Tube equipment may require more time).
4. Turn on power amplifier.

## **Turn Off Procedure**

1. Turn off power amplifier.
2. Turn off the rest of the system.

ALWAYS TURN OFF THE POWER AMPLIFIER BEFORE CONNECTING OR DISCONNECTING ANY CABLES.

---



- # 2. AC input filter section
- # 4. Driver section
- # 5. Output section
- # 6. Capacitor bank for driver section
- # 7. High power capacitor bank
- # 8. Transformer and rectifier tank
- # 1. Protection circuits

## WARNING

No serviceable parts inside the unit. Hazardous potential exists inside the unit, do not remove cover. Contact an authorized Gryphon dealer or distributor for service. To prevent fire or shock potential, do not expose this unit to rain or moisture.

## WARRANTY

---

The GRYPHON DM100 Power amplifier is warranted against failures arising through faulty workmanship and materials for a period of 1 year from date of purchase. The warranty is not transferable. All claims under this warranty must be made to the distributor in the buyer's country by returning the unit securely packed in the original box with all accessories, postage prepaid and insured. The unit will be repaired or replaced at no charge for parts and labour.

This warranty remains valid only if the serial number of the unit has not been defaced or removed and if repairs are performed only by authorized Gryphon dealers or distributors. It does not cover damage due to misuse, accident or neglect. The distributor or manufacturer, Gryphon Audio Designs, Denmark retains the exclusive right to make such judgement on the basis of inspection.

The retailer, distributor or manufacturer of the Gryphon shall not be liable for consequential damage arising from the use, misuse or failure of this product, including injuries to persons or property.

To qualify, the warranty registration card must be filled out and returned to the manufacturer within 10 days of purchase.