



# EV-UMBRA-PRO-DIFF-1200-EM-S

Professional Diffused Batten

## FEATURES

- Power monitoring (DT51)
- Tuneable white (DT8-Tc) controlled by DALI
- Flicker-free dimming controlled by DALI
- LED lifetime >120,000 hours
- 10 Years Design Life at max. ambient
- Self-test (AS2293/IEC62034)
- DALI (IEC62386)
- Emergency models fully compliant (AS/NZS 2293.3)
- High Quality Lithium battery (LiFePO4) and smart charger included with emergency models
- Microwave sensor suitable for DALI-2 supporting IEC 62386-303
- Corridor mode function in standalone operation

## MECHANICAL

Body Material	Powder Coated Steel
Diffuser Material	PMMA
Fitting Colour	White
Installation Type	Surface mount
IP Rating	IP20

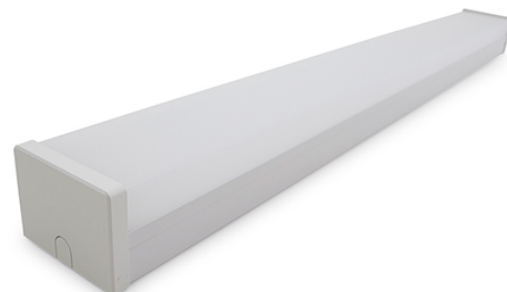
## ELECTRICAL

Electrical Rating	Class I
Input Frequency	50 Hz
Input voltage	230Vac
In Australia the Input voltage is defined as 230Vac -6%/+10%. This effectively means that the voltage range of these products are 216Vac - 253Vac or 240V +6%	
Maximum Wattage	33 W
Power Factor	0.95
Standby Power	0.3 W

Standby power for maintained emergency devices is measured when the light is on and the charger is in standby. Typically charging occurs for the first 16 hours after the device is powered or after a discharge. For non-maintained emergency devices or DALI controlled devices this is measured when the light is off and charger is in standby mode.

**Switch Type** Inbuilt Mains Rated DALI Switch

A Terminal input has been provided to allow the wiring of a Main rated switch input. This input can be programmed to switch any controlled area when using a DALI-2 compliant control system. This input supports IEC62386-301 (momentary or rocker switches), IEC62386-302 (on /off switches) and IEC62386-303 (mains rated sensor inputs).



**Working Temp Range** 0 to 40 °C

## LAMP

Macadam Steps (SDCM)	3-step MacAdam Ellipse
CCT Configuration	TUNEABLE WHITE
Full support for DALI-2 DT8 has been provided which allows White colour control on a compliant DALI-2 control system. This function can be used to set a desired colour or to transition between colours depending on the time of day.	
CRI	>84
Lamp/LED Current	850 mA
Lamp/LED voltage	36 V

## LED LIFETIME

<b>LED Lifetime</b>	>120000 hrs	
This is the Reported LED Lifetime in Hours based on TM-21. Ektor does not list the projected or calculated LED lifetime, which is normally longer as TM-21 Addendum B explicitly states " The Calculated and Projected Lp(Dk) are not to be reported: This Lifetime refers to the life of a single LED however the system life is longer since the probability and binomial distribution of all LEDs in the system means that the average led is performing above the specification and compensates for the LEDs falling below.		
<b>Ambient Temp (°C)</b>	25 °C	40 °C
<b>L90B10</b>	43000 hrs	43000 hrs
<b>L80B10</b>	90000 hrs	90000 hrs
<b>L70B10</b>	>120000 hrs	>120000 hrs
<b>L70B50</b>	>120000 hrs	>120000 hrs

This rating defines the performance of the led within its lifetime. L relates to lumen depreciation, where the proceeding number gives the resultant lumen output at the end of it reported lifetime. L70, would mean 70% lumen depreciation which means 30% of its initial output. The B part refers to failures, which can be define as the percentage of LEDs which fall below the L value in the projected lifetime. A value of B10 refers to 10% failure and a value of B50



refers to 50% failure. After the defined lifetime, the system will reach the defined lumen depreciation and the average led failures is defined by the B rating.

**TM-21 Test Hours** 20000 hrs

## COLOUR TEMPERATURE

**CCT** 3000K to 6500K

**CCT Colour** Tunable White

**System Lumens** >4400 lm

## DRIVER

**Dimmable** Yes

**Driver Included** Yes

**Integrated Driver** No

**Driver Type** DALI DT1 and DT8 Dimmable

DALI DT8 ~ Includes DALI-2 Driver with full support for DT6 and DT8-tc allowing flicker free dimming and colour control with complaint DALI-2 Application controllers.

**Power Monitoring** DALI Device type 51 power monitoring

Inbuilt DALI-2 support for Device type 51 - Power monitoring for use with DALI-2 Complaint control systems which allows the reporting of the products total power consumption for power aggregation and measurements.

**Wiring Type** Re-wireable terminal block (6 pin)

## SENSOR (S SUFFIX)

**Adjustable Detection Area / Sensitivity** Yes

**Adjustable Hold Time** Yes

**Adjustable Standby Level** Yes

**Adjustable Standby Period** Yes

**Corridor Function** Yes

**Dawn Reset** No

**Detection Range** 10 m

**Dusk Mode** No

**Lux Adjustment** No

**Manual Override** Yes

**Sensor Communication** DALI 2

Inbuilt DALI-2 Sensor for use with DALI-2 Compliant control systems. Some features and functions are only available for use with DALI-2 Application controllers which support the features. This product also supports a standalone mode for limited use without a DALI-2 application controller.

**Sensor Type** Microwave

**Switched Output** No

**Time Delay** Via DALI mins

## EMERGENCY (EM SUFFIX)

**Replacement Battery Code** 01302

**Emergency Classification** C0:D50, C90:D32

**Emergency Control** DALI Monitored (DT1)

DALI Monitored ~ Supports Emergency test and monitoring over DALI (IEC62386) with full compliance to IEC62386-202.

**Emergency Duration** 90 mins

**Emergency Mode** Maintained

**Emergency Output Power** 1900 mW

## COMPLIANCE

**Product Design Life** 100000 hrs

The product design life relates to the total product life which includes LEDs, drivers and the enclosure. This is different to the LED lifetime which only refers to the lifetime of the LEDs. The product design life is calculated at the maximum ambient or working temperature of the product.

**Standards** AS/NZS 60598.1  
AS 60598.2.22  
AS/NZS 61347.1  
AS/NZS 61347.2.13  
AS CISPR 15  
AS/NZS 2293.3

## WARRANTY

**Commercial Use Warranty** 2 Onsite, 3 RTB (Total 5 Years)

This product is covered with our extended commercial use warranty, which covers the product for up to 5-years. The first 2-years of the warranty is provided onsite within our terms and conditions and the remaining 3-year period is covered by a return to base warranty.

## DIMENSIONS

**Product Height** 93 mm

**Product Length** 1230 mm

**Product Width** 130 mm

## ORDERING INFORMATION

**Order code** 12240

**Description** EV-UMBRA-PRO-DIFF-1200-EM-S~UMBRA PRO 1200mm aLED  
Emergency batten with sensor

**Item Code** EV-UMBRA-PRO-DIFF-1200-EM-S

## LINE DRAWINGS

EV/UMBRA/PRO/DIFF

