



*Gets you started, Keeps you going*

2016 vol. 1.1

THE PROFESSIONAL'S CHOICE



SETTING THE STANDARD SINCE 1947



Founded in Australia more than 69 years ago, Matson is a leading name manufacturing and supplying quality battery related products.

Trusted by professional users, Matson products are recognised for their high quality, extensive range and innovative product development.

Matson product range is constantly growing, bring our customers new and innovative products that are designed to make the task easier, faster and safer.

Matson is a registered brand of Tridon Australia, a proud Australian family owned company.

Tridon prides itself on exceptional customer service in a variety of industries. We will continue to provide Matson products with product support and technical assistance

For further information please contact Tridon customer service on 1300 362 263.

# CONTENTS

BATTERY CHARGERS		ALL PURPOSE	2
		RECREATIONAL	6
		WORKSHOP	8
DUAL BATTERY MANAGEMENT		DC-DC CHARGING	12
		DUAL BATTERY KIT	14
		VOLTAGE SENSITIVE RELAYS AND ISOLATION SWITCHES	15
JUMP STARTERS		PROFESSIONAL	16
		HEAVY DUTY	17
		INDUSTRIAL	18
BATTERY TESTERS		DIGITAL BATTERY TESTERS	19
		CARBON PILE TESTERS	24
		MEMORY MINDER	24
ANTIZAP SURGE PROTECTION		JUMP LEAD UPGRADE	25
		SERVICE MINDERS	25
POWER INVERTERS		PURE SINE DC TO AC	26
BATTERY TERMINALS		SOLID BRASS TERMINALS	28
		TERMINAL ASSORTMENT PACKS	30
CABLE LUGS		COPPER LUGS AND ASSORTMENTS	31
BATTERY CABLES		BATTERY TO STARTER	32
		SWITCH TO STARTER	32
		BATTERY JOINERS	32
		EARTH AND GROUND STRAP (BRAIDED COPPER)	32
		BATTERY CABLE ROLLS	33
JUMPER LEADS		PROFESSIONAL RANGE	34
TOOLS & EQUIPMENT		CRIMPING TOOLS	37
		BATTERY CARRIERS	38
		TERMINAL POST BRUSHES	38
		BATTERY TERMINAL SPREADERS	38
		HYDROMETER	38
BATTERY ACCESSORIES		BATTERY MONITOR	38
		BATTERY BOXES	39
		BATTERY TRAYS	39
		BATTERY HOLD-DOWNS	39
		ANDERSON STYLE CONNECTORS	40
		TERMINAL COVERS	40
		BATTERY CLIPS/CLAMPS	40

## ALL PURPOSE

### IP65 RATED CHARGERS

The autoExact IP65 range of chargers by DHC are water & dust resistant, ideal for boating & the great outdoors. With the latest charging algorithm technology, autoExact brings to the market affordability, simplicity and an environmental commitment to extend battery life.

The autoExact ranges of Battery Chargers have been specifically developed to offer the customer a charger that does not require them to be a battery expert. There are no selection requirements to remember, no concerns about remembering to continually check the battery being charged and no need to remember to turn it off. It does everything for you and you only have to remember that Red Clamp goes to "POSITIVE" + and the Black clamp goes to "NEGATIVE" -.

These chargers can be used indoors, outdoors, hard wired, mounted and will even give deeply discharged batteries a chance of a second life.



**AE150E – DHC BATTERY CHARGER**

- 1.5 Amp, 12 Volt
- LED Display with battery status indicators
- Microprocessor controlled
- Smart Pulse Technology
- Maintenance capabilities
- Inbuilt safety protections



**AE300E – DHC BATTERY CHARGER**

- 3 Amp, 12 Volt
- LED Display with battery status indicators
- Microprocessor controlled
- Smart Pulse Technology
- Maintenance capabilities
- Inbuilt safety protections

### SPECIFICATIONS

Technical Data				
Input Voltage	220-240VAC, 50 Hz			
Charging Current	AE150E	AE300E	AE500E	AE1000E
	1.5A	3.0A	5.0A	2.0A-10.0A
Weight	0.46	0.46	0.51	0.88
Dimensions	170 x 73 x 48mm (LxWxH)	170 x 73 x 48mm (LxWxH)	170 x 73 x 48mm (LxWxH)	210 x 98 x 60mm (LxWxH)
Charging Voltage	12 - 14.8V			Variable by Chemistry
Min. Start Voltage	1V			2V
Charger Type	5 Stage, Automatic charging cycle			Lead Acid = 9 Stage, Lithium = 6 Stage
Battery Type	12V Lead Acid Batteries			12V Flooded, AGM, Sealed, Gel, Calcium and Lithium (LiFePO4)
Power Supply Mode	N/A	N/A	N/A	13.6 Volt 10Amp
CCA	100 CCA - 750 CCA			Up to 1000CCA
Protection	Reverse polarity, over temperature, over current, short circuit, spark free protection			
Amp Hours	10Ah - 200 Ah			
Warranty	12 Months			

## ALL PURPOSE

The autoExact range is

- **SAFE** - non-sparking, short circuit and reverse-polarity protected for peace of mind operation.
- **SIMPLE** - One-step operation. Simply connect the charger to the battery, turn on mains power, and charging will begin immediately.
- **FULLY AUTOMATIC** - Fully automatic charging and maintenance to maximize the batteries life and performance.



### AE500E – DHC BATTERY CHARGER

- 5 Amp, 12 Volt
- LED Display with battery status indicators
- Microprocessor controlled
- Smart Pulse Technology
- Maintenance capabilities
- Inbuilt safety protections



### AE1000E – DHC BATTERY CHARGER

- 2Amp/10Amp 12 Volt
- IP65 waterproof and dustproof
- Large LED screen display
- Chemistry selectable including Lithium (LiFePO<sub>4</sub>)
- Power supply mode (13.6V 10Amp)
- Microprocessor controlled
- Smart Pulse Technology
- Maintenance capabilities
- Full safety protections

#### Charge Time Calculation

BATTERY SIZE (RATING)		AE150E	AE300E	AE500E	AE1000E
MOTORCYCLE, GARDEN TRACTOR, ETC	100CCA	5 HRS	3 HRS	NR	3.5 HRS
	120CCA	6 HRS	3.5 HRS	NR	3 HRS
CARS, TRUCKS, PICKUP, ETC	200CCA	M	6 HRS	3.5 HRS	3 HRS
	300CCA	M	8 HRS	6 HRS	4 HRS
	400CCA	M	11 HRS	7.5 HRS	5 HRS
	500CCA	M	15 HRS	10 HRS	7.5 HRS
	600CCA	M	18 HRS	12 HRS	9 HRS
	750CCA	M	23 HRS	15 HRS	11 HRS

NR: NOT RECOMMENDED M: MAINTENANCE

## ALL PURPOSE



### 6/12/24 VOLT ALL IN ONE CHARGER

The IR61224 is your ultimate battery management device. With the simplicity of push button selection, the user has full control over the charging of their battery. Change the amperage, voltage and battery chemistry with a simple touch of a button!

For peace of mind, this charger will automatically adjust its output amperage to ensure the battery is protected from overcharging.

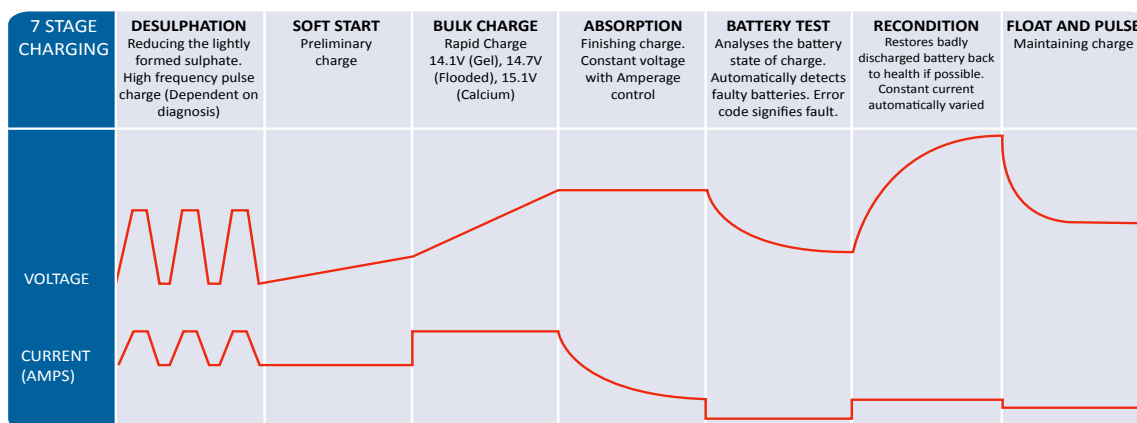
The IR61224 has a microprocessor controlled 7 stage charging program. At the completion of each stage, the charger will conduct a diagnosis of the batteries condition to ensure it has been completed correctly. This feature both extends battery life and maximises the batteries usable energy.



#### IR61224 – Infinite Battery Charger

- 6/12/24 Volt Charger
- 2, 10 or 20 amp selectable on 6/12 volt and 5, 2 or 10 amp selectable on 24 volt
- Electronic Touch Button Control
- Chemistry selectable: GEL, Flooded(SLA, Deep Cycle, AGM), Calcium
- LED Display shows voltage, current (amps), battery capacity and fault diagnosis
- 7 stage charging for optimum battery conditioning and extended battery life

Part No.	IR61224
Charging Stage	7 Stage
Input.	240VAC, 50Hz
Output Voltage	6/12/24 Volt DC Selectable
Output Current	6/12 Volt, 2/10/20 Amp. 24 Volt, 2/5/10 Amp. Selectable.
Min. Start Voltage	1.5 Volt
Charge Control	
Desulphation	High Frequency Pulse Charge (DEPENDENT ON DIAGNOSIS)
Soft Start	Yes
Charge Rates	14.1V (Gel), 14.7V (Flooded), 15.1V (Calcium)
Absorption	Constant voltage with automatic Amperage control
Equalization	Automatic
Analysis / Fault Find	Automatically detects faulty batteries. Error code signifies fault (Refer Manual)
Recondition	Constant current automatically varied
Alternator Function	When selected, will indicate that the alternator is functioning correctly (40%-60%)
Float	6V @ 6.8V / 12V @ 13.7V / 24V @ 27.4V
Features	
Case Construction	Aluminium
Fan Cooled	Yes
Weight	2.4kg
Dimensions (LxWxH)	246 x 146 x 50mm (LxWxH)
Permanent Mount	No
Warranty	12 Months
Battery Size / Type	
Size	2 - 300 Ah Charge & 2 - 400 Ah Maintain
Type	Storage, Deep Cycle and Automotive and Industrial



ZERO VOLT  
PICK UP

## BATTERY RESCUE

The Matson BATTERY RESCUE charger has been built to Matson specifications. This charger is designed to recover deeply discharged batteries. If the battery has been inadvertently drained beyond normal recovery, the BATTERY RESCUE can recover the battery to a full charge if the batteries internal plates have not been damaged.

The BATTERY RESCUE can recognise a battery even at ZERO volts, a feature which is not available with other chargers.

The BATTERY RESCUE is compact and dust resistant, making it perfect for continual use in outdoor areas. This charger is suitable for rarely used or infrequently used vehicles such as tractors, boats and show cars.

The BATTERY RESCUES patented positive and negative pulse charging technology will help revive sulfated batteries, thus prolonging the batteries life.

**BRM1.6 – Battery Rescue Maintainer**

- 12 Volt, 1.6 Amp
- Fully automatic 3 stage charging system
- Plugs directly into 240V outlets
- Short circuit, reverse polarity & overload protection
- Can recognise a battery even at zero volts
- Suitable for 12V automotive batteries, including GEL, Calcium, sealed & conventional Lead Acid
- Perfect for maintenance charging on small, infrequently used vehicles, such as motorcycles, to ensure you always have a charged battery.
- Suitable for charging small vehicle batteries up to 250CCA or 40AH
- Suitable for maintaining batteries up to 100AH

Part No.	<b>BRM1.6</b>
Charging Stage	3 Stage
Input.	240VAC, 50Hz
Output Voltage	12 Volt DC
Output Current	1.6 Amp
Min. Start Voltage	0 Volt
Charge Control	
Boost Charge Rates	14.8V
Absorption	Yes
Float Charge Rate	13.7V
Features	
Fan Cooled	No
Weight	0.14kg
Dimensions	100 x 36 x 56mm (LxWxH)
Permanent Mount	Yes
Warranty	12 Months
Battery Size / Type	
Size	17 ~ 100 Ah (Storage/Deep Cycle)
Type	Deep Cycle and Automotive VRLA / AGM / SLA / Flooded & Lead Acid



## RECREATIONAL CHARGERS

### RECREATIONAL

The RV30 Recreational Charger has been designed to be the perfect solution for charging auxiliary batteries in caravans, campers and recreational vehicles. The unit delivers a 30amp charging current, sufficient to charge up to 400amp hours of battery capacity, as well as charging voltages tailored to the popular battery chemistries found in different types of starting and storage batteries. It also features a power supply function at a stable 13.7 volts. This charger has a unique removable front display screen and control panel that can be mounted in a convenient position away from the location of the charger, enabling visibility of both battery and charger condition, and total control of charger operation from a remote location. The RV30 can be mounted in various configurations – horizontally – vertically AND panel mounted. All mounting fittings are included with the product. The RV30 is the perfect companion for reliable battery charging and ease of operation.



#### **RV30 – 12 Volt, 30 Amp, Multistage Intelligent Battery Charger with detachable remote**

- Fully automatic, 9 stage charger
- The LCD display is engineered into a detachable remote control panel which allows the charger to be mounted out of sight
- LCD screen displays charger status and allows full function control
- Set and forget - one set memory function
- Power supply mode
- Will recognise a battery voltage as low as 3V
- Automatically detects faulty batteries, includes all safety features
- Built tough for Australian conditions
- Multiple mounting options included

Part No. <b>RV30</b>					
Charging Stage	Input	Output Voltage	Output Current	Desulphation	Soft Start
9 Stage	240VAC 50Hz	12 Volt DC	2, 6, 12, 24 & 30 Amp. Selectable	Yes	Yes
Charge Rates	Power Supply Rate	Absorption	Equalisation	Size	Type
14.1V (Gel), 14.7V (Flooded), 15.1V (Calcium)	13.7V	Yes	Automatic	10 ~ 600 Ah	Storage, Deep Cycle and Automotive



## RECREATIONAL CHARGERS

# OptiCharge

### PRODUCT INFORMATION

1. Sleep Mode Function: On sleep mode, the fan ceases to operate, thus eliminating unnecessary fan noise. The charger will reduce output to a maximum 5 Amps.
2. Normal Mode: The charger will work at its maximum capacity according to its specification. Fan will run as necessary.
3. Battery Temperature Sensor: To detect the battery temperature while charging, connect the wire sensor to the battery case by adhesive or tape.
4. Remote control: Connect the remote control to the socket on the charger. It will display the status of the charger and also the battery. You can see the selected mode on the left side of the remote. Remote control also has ON/OFF switch, which cuts off the output. Remember if you want to turn off the charger completely, please switch off the main switch on charger itself.
5. Mode selection: Charger has 7 modes, as you can see 3 little switches on the right side of the unit, under "Mode Selection". Those 3 switches can be used to change to different modes according to the users needs.



### OC1230 – 12 VOLT, 30 AMP BATTERY CHARGER

- The "OptiCharge" is a professional 12 Volt multi programmable electronic Smart Charger.
  - Suitable for Workshop, Caravan, RV, Automotive and Marine applications.
  - Electronically superior, the "OptiCharge" is protected against user errors.
  - Sleep Mode function: On sleep mode, the fan ceases to operate, thus eliminating unnecessary fan noise. The charger will reduce output to a maximum 5 amps.
  - Power Factor Correction.
  - Operates through a wide range of input voltages (90 ~ 264 Volt AC)
  - LCD Remote - Charger status indicator with Charger ON/OFF switch.
  - Battery Temperature sensor.
  - Tri - Colour LED to indicate battery charging status.
- CHARGE MODE SELECTABILITY**
1. For recharging INSTALLED SLA, AGM, Flooded, Storage and VRLA Batteries.
  2. For recharging INSTALLED GEL Chemistry batteries.
  3. For recharging DISCONNECTED SLA, AGM, Flooded, Storage and VRLA Batteries that require a Faster Charge rate.
  4. For the recovery of DISCONNECTED and aging/sulphated GEL Batteries.
  5. For the recovery of DISCONNECTED and aging/sulphated SLA, AGM, Flooded, Storage and VRLA Batteries.
  6. Power Supply Mode (Energy Save) at 12.2 Volts DC output.
  7. Power Supply Mode at 13.5 Volts DC output.

Part No.	<b>OC1230</b>
Voltage Range	100 ~ 240 VAC
Frequency Range	45 ~ 65Hz
Efficiency	>=85%
Power Factor	1.0 at full load (+/-5%)
Input Socket	IEC Plug
Protection	
Over Temperature	55°C ± 5°C
Overload	YES
Output Short Circuit	YES
Microprocessor Check	YES
Environment	
Working Temp	-15°C ~ +45°C
Working Humidity	20 ~ 90% RH non-condensing
Storage Temp.	-30°C ~ +70°C, 10 ~ 95% RH
Humidity	
Temp. Coefficient	± 0.05%/°C (0 ~ 50°C)
Other	
Remote Control	YES
Dimensions	252 x 142 x 72mm (LxWxH)
Weight	2.5kgs
Warranty	12 Months



The AE5000 is a unique charger designed to give the user complete flexibility. It allows you to select charge amperage up to 50 Amps, battery chemistry (Lead Acid, AGM or GEL), fast/slow or manual charging selection and allows you to interrupt charging and recommence without loss of settings. This unit also has a DC power supply made with adjustable voltage (13 to 14 volts) for usage in mobile home/caravan applications or just to run a 12 volt DC device.



## AE5000 – POWER SUPPLY AND BATTERY CHARGER

- 12 volt, 50 amp selectable
- 13V ~ 14V adjustable voltage in Power Supply mode
- 1 ~ 50Amp adjustable amperage in charger mode
- Microprocessor controlled
- Easy to read LCD display
- Over current, over temperature and over voltage protection

Part No.	AE5000
Input AC Voltage	120 - 240VAC
Minimum Start Voltage	1V
Charger	
Application	12V SLI/VRLA/GEL/AGM,CAL/CAL & SPIRAL batteries
Charger Technology	Intelligent Switching Power Battery Charger
Charge Current	1 ~ 50 Amp (Max.) adjustable
Power Supply	
Power Supply Voltage Regulation	13V - 14V (Adjustable DC output)
Output Voltage Tolerance	± 2%
Others	
Indicators	2 Lines LCM & 4 Digital LEDs
Safety & Protection	Over current, over temperature and over voltage
Features	Input, Auto polarity & spark free protection Microprocessor controlled Max. amp output at regulated voltage: 50 Amp On/Off switch
Dimensions	370 x 230 x 95mm (LxWxH)
Weight	5.4kg
Warranty	12 Months



**12V OR 24V OR  
36V OR 48V  
SELECTABLE**



## MA4INONE – 4 IN 1 BATTERY CHARGER

- 4 different charge voltage settings  
12V - 30 Amps  
24V - 30 Amps  
36V - 25 Amps  
48V - 15 Amps
- 3 stage fully automatic Switch Mode charging and maintenance capabilities
- Offers protection against short circuiting, reverse connection and overheating
- LED display bar indicates what voltage has been selected and percentage charged
- Charges Lead Acid, NiMH, AGM and Sealed batteries
- Heavy duty Aluminium housing

CHARGER OUTPUT				
Nominal Output Voltage	12V	24V	36V	48V
Max Output A	30A	30A	25A	15A
Max Output Power	450W	900W	1000W	900W
Charge Voltage	14.7V	29.4V	44.1V	58.8V
Float Voltage	13.6V	26.6V	39.9V	53.2V
Minimum Start Voltage	8.0V	16.0V	27.0V	40.0V

Part No.	MA4IN1
Charging Stage	3 Stage
Input.	240 Volt AC
Output Voltage	12/24/36/48 Volt DC
Output Current	30/30/25/15 Amp
Min. Start Voltage	Refer to 'Charger Output' Table
Charge Control	
Desulphation	-
Soft Start	Yes
Charge Rates	Refer to 'Charger Output' Table
Absorption	Yes
Equalization	Yes
Analysis / Fault Find	Yes
Recondition	-
Features	
IP Rating	-
Case Construction	Aluminium
Fan Cooled	Yes
Weight	5kg
Dimensions	300 x 223 x 101mm (LxWxH)
Permanent Mount	Yes
Warranty	12 Months
Battery Size / Type	
Size	10-240 AH
Type	Deep Cycle and Automotive VRLA / AGM / SLA / Flooded & Lead Acid



## WORKSHOP BATTERY CHARGERS

The Matson WORKSHOP chargers are all fully automatic. Automatic chargers prevent your battery from being overcharged and consequently being damaged.

The WORKSHOP chargers can be programmed for different battery types including GEL, AGM, Deep Cycle, Sealed Lead Acid and Calcium batteries. The WORKSHOP MW15 is a 7 stage pulse charger and has a unique inbuilt diagnosis program. On connection to the battery, the charger will automatically diagnose the batteries condition and change its charge rate and charge stages according to the battery's state of charge. This function will optimise charging conditions and extend battery life. This charger is 12 Volt with the options of 5, 10 or 15 Amp.



### MW15 – Workshop Battery Charger

- 12 Volt, 5/10/15 Amp
- Electronic touch button controls
- Chemistry selectable: Sealed Lead Acid, GEL, Deep Cycle and Calcium
- LED Display

Part No.	<b>MW15</b>
Charging Stage	7 Stage
Input.	240VAC, 50Hz
Output Voltage	12 Volt DC
Output Current	5/10/15 Amp Selectable
Min. Start Voltage	3 Volt
Charge Control	
Desulphation	Yes
Soft Start	Yes
Charge Rates	14.1V (Gel), 14.7V (SLA), 15.1V (Calcium)
Absorption	Constant voltage with automatic Amperage control
Equalization	Automatic
Analysis / Fault Find	Yes
Recondition	Constant current automatically varied
Float	13.7V
Features	
IP Rating	-
Case Construction	Aluminium
Fan Cooled	Yes
Weight	2.7kg
Dimensions	234 x 205 x 75mm (LxWxH)
Permanent Mount	Yes
Warranty	12 Months
Battery Size / Type	
Size	10 ~ 240 Ah
Type	Storage, Deep Cycle and Automotive GEL / Calcium / VRLA / AGM / SLA / Flooded & Lead Acid





**SC212PE – DHC 2 & 12 AMP BATTERY CHARGER**

- 12 Volt, 2 & 12 Amp
- LED Display
- Microprocessor controlled 5-stage charging
- Switches to float mode automatically
- Charge and maintain batteries simultaneously
- Reverse polarity and overcharge protection



**SC244PE – DHC BATTERY CHARGER**

- 24 Volt, 4 Amp
- LED Display
- Microprocessor controlled 5-stage charging
- Switches to float mode automatically
- Charge and maintain batteries simultaneously
- Reverse polarity and overcharge protection

## BANK CHARGER



**SCM54E – DHC 4 STATION BATTERY CHARGER**

- 12 Volt, 5 Amp (Each Station)
- LED Display
- 4 Individual Stations

Part No.	SC212PE	SC244PE	SCM54E
Charging Stage	5 Stage	5 Stage	5 Stage
Input.	240VAC, 50Hz	240VAC, 50Hz	240VAC, 50Hz
Output Voltage	12 Volt DC	24 Volt DC	12 Volt DC
Output Current	2 & 12 Amp	4 Amp	5 Amp (Each Station)
Min. Start Voltage	1.5 Volt	1.5 Volt	1.5 Volt
Charge Control			
Desulphation	Yes	Yes	Yes
Soft Start	Yes	Yes	Yes
Charge Rates	14.8V	29.6V	14.8V
Absorption	Yes	Yes	Yes
Equalization	Yes	Yes	Yes
Analysis / Fault Find	Yes	Yes	Yes
Recondition	Yes	Yes	Yes
Float	13.7V	26.6V	13.7V
Features			
Case Construction	ABS + PC Plastic	ABS + PC Plastic	ABS + PC Plastic
Fan Cooled	Yes	Yes	Yes
Weight	0.65kg	0.66kg	2.5kg
Dimensions	205 x 122 x 70mm (LxWxH)	205 x 122 x 70mm (LxWxH)	350 x 190 x 75mm (LxWxH)
Permanent Mount	No	No	Yes
Warranty	12 Months		
Battery Size / Type			
Size	2-200 AH	12-200 AH	10-200AH
Type	Deep Cycle and Automotive VRLA / AGM / SLA / Flooded & Lead Acid		

## DC-DC CHARGING

# DC to DC

The MA30DCS DC-DC battery charger is the ideal companion for charging auxiliary batteries in 4x4's, caravans and campers. The charger offers a strong 30 amp charging current with the flexibility of being able to be powered by both 12V from a vehicle alternator and up to 500 watts of solar panels simultaneously. The unit's solar regulator uses Maximum Power Point Tracking (MPPT) technology to maximise the efficiency of the power harvested from the sun.

The real strength of the MA30DCS comes in its versatility. The low voltage cut-out and charging cut-in voltages can be adjusted to suit most applications, making this unit ideal for vehicles with low or variable voltage alternators (Min cut in voltage 12.0V). The bulk charge and float charge voltages can be adjusted to suit different battery types, including Lithium (LiFePO4) and you can even decide if you want your solar panel input to take priority over the 12V alternator input.

**This charger is not designed to be mounted in the engine bay or externally.**



**MA30DCS – 12V, 30Amp DC-DC Battery Charger with Solar Input**

- Easy to install and program
- Easy to read LCD display
- Adjustable low voltage cut-out
- Adjustable voltage cut-in
- Adjustable Bulk charge voltage
- Adjustable Float charge voltage
- Adjustable input priority (Alternator/Solar)
- MPPT regulator technology
- Suits most battery chemistries incl. Lithium
- Mounts vertically or horizontally
- Full safety protections
- Low current draw in sleep mode
- Automatic temperature compensation
- Temp sensor included

**Product Available November 2016**

Part No.	MA30DCS
Type	3 Stage Micro-processor controlled
Input Voltage DC	12.0 to 50.0V
Max Input Current	40 Amp
Solar Input Voltage	10.0 to 50.0V
Max Solar Input Current	40Amp (500Watt)
Min Solar Input	120 Watt
MPPT Regulator	Yes
Low Voltage Cutout	Adjustable 11V to 25.2V
Cut In Voltage	Adjustable 12V to 26.2V
Output Current (Charging)	Max 30Amp
Bulk Charge Voltage	Adjustable 14.2V to 14.8V
Float Charge Voltage	Adjustable 13.2V to 13.8V
Min start voltage (secondary batt)	8V
Soft Start Charging	Yes
Battery Temperature Compensation	Automatic
Temperature Sensor Included	Yes
Reverse Polarity Protection	Yes
Solar Panel Reverse Polarity Protection	Yes
Ambient Operating Temp. Range	-10C to +45C
Sleep Mode Current Draw	20mA
Weight	1.8Kg
Dimensions	236mm x 203mm x 87mm (LxWxH)
Suits Most Battery Chemistries incl.	Gel, AGM, AGM Spiral, Sealed Maintenance Free, Flooded, Lithium (LiFePO)
Suits Battery Sizes	Up to 400A/h or 1500CCA

## DC-DC CHARGING

Announcing the arrival of the new more advanced 20 amp with solar input range of DC to DC chargers. This charger offers sophisticated 3 stage smart charging utilizing switch mode technology and designed to charge your storage/auxiliary battery using the vehicles 12V power source.

# DC to DC



### MA20DCS – 12 VOLT, 20 AMP DC TO DC BATTERY CHARGER WITH SOLAR INPUT (SOLAR PANEL NOT INCLUDED)

- Designed and manufactured for tough Australian conditions, the Matson MA20DC is ideal for all DC to DC charging applications
- Simple Set and Forget technology with easy connection to both batteries
- Can be used in solar applications
- 20 amp output, 12 volt input
- Three stage smart charging
- Suitable for GEL, Lead Acid or Calcium chemistry batteriees (Selectable)
- LEDs indicate charging status and selected chemistry
- Electronic touch-button selection
- Ease of installation
- Input: 12.8V to 25V DC
- Low voltage cutout @ 12.2 volt
- Short circuit and reverse polarity protected
- Overheating protection and cutout
- Microprocessor control and management
- Connected solar panels are to be regulated

**NOTE:** This DC to DC charger may not work with a variable voltage alternated vehicle. Check with vehicle manufacturer for alternator cut out voltage on vehicles primary battery. If below 12.2 volt, do not use this DC to DC charger.

Part No.	MA20DCS		
Type	3 Stage pulse charge		
Input	12.8V to 25V DC		
Low Voltage Cutout	12.2 Volt		
Cut In Voltage	12.4 Volt		
Output Current	20 Amp		
Output Voltage	GEL	CALCIUM	AGM/Deep Cycle/VRLA
Absorption	14.3V	15.6V	14.7V
Fully Charged (Float Charge)	13.3V	13.8V	13.8V
Reverse Polarity Protection	40A (Fuse supplied)		
Solar Panel Reverse Polarity Protection	20A (Fuse Supplied)		
Recommended Solar Panel (min)	120 - 500 Watts regulated Input: 9.0 to 30.0 Volts DC		
Soft Start	Yes - (Gradual ramp up of charger output)		
Equalization	Automatic - (Charger will commence this process at start up)		
Max Output Power	250W		
Minimum Start Voltage (Auxiliary Battery)	1.5V		
Float Mode Current Draw	<10mA		
Ambient Temperature	-15C to +50C		
Weight	0.98kg		
Dimensions	150x160x53mm (LxWxH)		
Battery Range			
Deep Cycle	18 ~ 250AH		
Automotive	150~1000CCA		
Warranty	12 Months		
Chemistries (Selectable)	Deep Cycle and Automotive GEL / Calcium / AGM, Deep Cycle, SLA, VRLA		



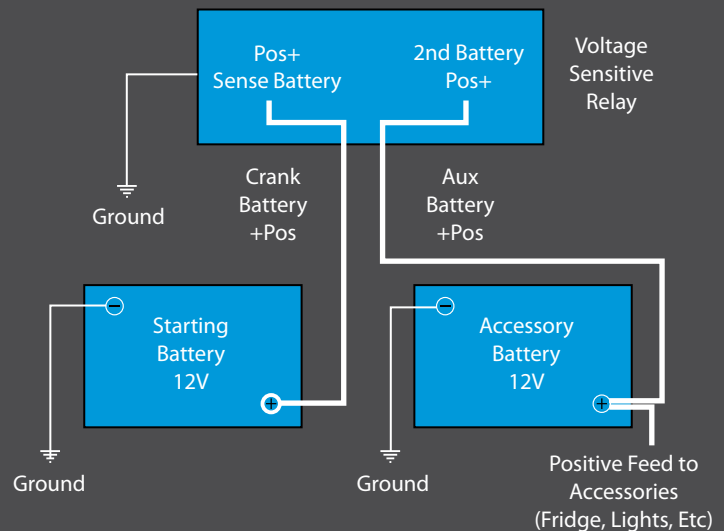
# DUAL BATTERY KIT



## HOW THE DUAL BATTERY KIT WORKS

The Matson Dual Battery Kit is designed to allow the 4WD, caravan and boating enthusiast to run a second battery for all those power hungry outdoor accessories, without risking power drain from the vehicle's starting battery. When installed in accordance with directions, the voltage sensitive relay will stay open when the engine is started, isolating the starting battery, until the charge rate reaches 13.3 volts at which time the voltage sensitive relay closes allowing both batteries to be charged. When the voltage of the cranking battery drops to 12.8 volts the relay isolates the two batteries leaving the cranking battery fully charged while the auxiliary battery continues to power the accessories.

The next time the vehicle's engine is running, the starting battery is charged back up to 13.3 volts, at which time the VSR redirects the charge back to the auxiliary battery.



### MA98504 – 13.3V DUAL BATTERY KIT WITH EMERGENCY PARALLEL SWITCH

- Automatically isolates the starting battery from the auxiliary battery
- Suitable for 4X4, Marine, Truck, Caravan & camping applications
- No need to modify vehicle wiring
- Kit contains all components required to complete the job
- Voltage sensitive relay rated at 140 amps
- Proven reliability over many years
- Easy to install
- 12 months warranty

# VOLTAGE SENSITIVE RELAYS AND ISOLATION SWITCHES

## VOLTAGE SENSITIVE RELAYS

The VSR (voltage sensitive relay) allows two batteries to be charged at the same time and then isolates them from each other when the vehicle is turned off.

The relay stays open, isolating the two batteries when the engine is first started, remaining open until the primary battery has reached a preset voltage of 13.3V. The relay then closes, allowing the two batteries to be charged together. When the engine is stopped, the voltage returns to normal levels allowing the relay to open again. This separates the two batteries and eliminates the possibility of discharging the primary/starting battery.



### **MA98404 - VOLTAGE SENSITIVE RELAY**

- 140 Amp cut in 13.3V
- Cut out 12.8V
- Emergency parallel switch
- 12 months warranty



### **MA98400 - BATTERY MASTER SWITCH**

- 250 Amp 12V continuous
- 1000 Amp for 15 seconds
- Rated to a maximum 32V DC
- 12 months warranty

## BATTERY MASTER SWITCH



### **MA2313 - PLASTIC BATTERY MASTER SWITCH WITH REMOVABLE KEY**

- For passenger cars, light trucks, boats and stationary engines
- 1000 Amps max at 12V or 500 Amps at 24V for 5 seconds
- Continuous load maximum 100 Amps

## TERMINAL ISOLATOR



### **MA2323 - BATTERY TERMINAL ISOLATOR**

- Simple to install. No new termination required
- The existing negative terminal fastens to the rear of the master terminal
- Turn the dial to break the connection and disable the battery

# JUMP START PACKS - PROFESSIONAL

**1000CCA+  
OUTPUT**

Professional Quality Jump Start units designed for workshop conditions. Heavy duty clamps and a robust case combined with high performance long life batteries make these units the tradesman's choice.



## MA1700 - PROFESSIONAL JUMP STARTER

- Suitable for 12V systems
- Reverse polarity protection
- 1700 peak Amps
- 500CCA
- Dead start function
- Built in safety monitoring to ensure faulty battery starting is not attempted
- Heavy duty cable and fully insulated clamps
- Ultra high performance sealed AGM battery
- Recharge from any 240V AC or 12V DC Outlet
- 12V DC power outlet with overload protection and protective cover
- Charge level indicator
- Side compartments to protect cables
- Heavy duty professional use
- Comes with 3 stage, 2 amp charger to ensure optimum battery life



## MA3400 - PROFESSIONAL JUMP STARTER

- Suitable for 12V and 24V systems
- Reverse polarity protection
- 3400 peak Amps
- 1000CCA (12V) 500CCA (24V)
- Dead start function
- Built in safety monitoring to ensure faulty battery starting is not attempted
- Heavy duty cable and fully insulated clamps
- Ultra high performance sealed AGM battery
- Recharge from any 240V AC or 12V DC outlet
- 12V DC power outlet with overload protection and Protective cover
- Charge level indicator
- Side compartments to protect cables
- Heavy duty professional use
- As supplied to the Australian Army
- Comes with 3 stage, 2 amp charger to ensure optimum battery life

Part No.	MA1700 12V	MA3400 12/24V
Application	Professional all 12V cars, 4WD and light commercial	Professional, most 12/24V cars, trucks and buses
Battery	1 x high performance sealed AGM	2 x high performance sealed AGM
CCA	500	1000@12V, 500 @ 24V
Peak Amps	1700	3400@12V
Dead Start	YES	YES
Weight	7.4kg	14.5kg
Cable Length/Size	200cm/4AWG	190cm/2AWG
Warranty	12 Months	

# JUMP START PACKS - HEAVY DUTY

**1000CCA+  
OUTPUT**



## RA1900 - HEAVY DUTY JUMP STARTER

- 12 Volt, 1900 Peak Amps
- 1 x 21Ah AGM battery
- Short Circuit Protected
- Reverse Polarity Protected
- Dimensions: 36 x 11 x 37 cm
- Weight: 11 kgs
- Long 2.6 Metre x 32mm<sup>2</sup> DC cable to allow ground positioning of unit when in use.
- Drop Resistant Unbreakable Case
- 12V DC Power Outlet with Overload Protection
- Voltmeter and Test Button to allow units Battery "Level of Charge" to be displayed.
- Rechargeable from 240V AC or 12V DC Supply
- Clamps are protected from arcing when unit is in the "OFF" position
- ANTIZAP® Voltage & Current Surge and Spike Protected even when the unit is in the "OFF" position.
- Safety LED (Green Flashing) Indicator fitted to confirm when ANTIZAP® is operational.
- Safety LED (Red) Indicator fitted to indicate a visual warning that the clamps have been reverse connected to the battery.
- Safety Reverse Connection Warning buzzer sounds when clamps are accidentally connected in reverse, even when the unit is in the "OFF" position.

Part No.	RA1900 12V	RA3800 12/24V
Application	12V cars, 4WD and light commercial	Heavy duty trucks and buses
Battery	1 x 21 Ah	2 x 21 Ah
CCA	500 @ 12V	1000 @ 12V, 500 @ 24V
Peak Amps	1900 @ 12V	3800 @ 12V, 1650 @ 24V
Weight	11 kgs	20.4 kgs
Warranty	12 Months	



## RA3800 - HEAVY DUTY JUMP STARTER

- 12 Volt – 3800 Peak Amps
- 12 Volt – 1000 CCA
- 24 Volt – 1900 Peak Amps
- 24 Volt – 500 CCA
- Unbreakable molded single piece housing.
- 32mm<sup>2</sup> DC cable @ 152cm
- 2 x 2 1 Ah Batteries
- Dimensions: 36 x 16 x 36.6 cm
- Weight: 20.4 kgs
- Switch Charger 12V-2Amp for quick efficient charging
- Comes with 3 stage, 2 amp charger to ensure optimum battery life



## MAC02- 12V, 2A JUMP START CHARGER

- Jump start charger suitable for MA1700, RA1900, MA3300 and MA3400
- Connects through cigarette lighter port
- Can be used as a separate 12 volt, 2 amp battery charger
- 12 months warranty



# THUNDERBOLT

## THUNDERBOLT JUMP START

Matson has released the MA8000 Thunderbolt – the most affordable and super powerful workshop trolley jump- start yet.

Producing a massive 8000 Peak Amps and 2000CCA on the 12 volt setting and 4000 Peak Amps and 1000CCA on the 24 volt setting, the MA8000 Thunderbolt is one of the most powerful workshop jump starts available. Fitted with a stainless steel axle and heavy duty rubber wheels for easy movement around the workshop and yard, this is the “go anywhere” solution to your heavy duty jump start needs.

### MA8000 - HEAVY DUTY INDUSTRIAL JUMP STARTER

- 8000 peak amps starting power
- Bonus RV210 10 amp smart charger for recharging
- 1.7m 50mm<sup>2</sup> high conductivity leads (incl. clamps)
- Industrial grade clamps with brass connection points
- 12V DC power outlet with overload protection
- 12/24V digital volt meter – indicates the voltage of the battery to be jump started when the clamps are first connected and the selection switch is in the “Off” position
- Matson’s patented ANTIZAP® voltage spike protection – even in the “off” position
- Green flashing light to indicate ANTIZAP® protection
- Warning buzzer and LED alert for reverse connection
- Reverse polarity warning
- On/Off safety switch
- Short circuit protection

Part No.	<b>MA8000 12/24V</b>
Application	Professional, most 12/24V cars, trucks and buses
Battery	4 x high performance sealed AGM
CCA	2000@12V, 1000 @ 24V
Peak Amps	8000 @ 12V, 4000 @ 24V
ANTIZAP® Protection	YES
Weight	40kg
Cable Length/Size	1.7M/50mm <sup>2</sup>
Warranty	12 Months



**RV210  
CHARGER  
INCLUDED**

## DIGITAL BATTERY TESTERS

### SPECIALISING IN AGM & EFB BATTERY DIAGNOSTICS

With the surge of START-STOP vehicles, Matson is introducing an advanced diagnostic tool for the testing of START-STOP batteries and electrical systems. This cutting edge new model provides easy diagnostics for START-STOP battery systems with the added value of testing traditional battery types.

The unit features simple instructions and an easy to read backlit display. It provides technicians with the capability to perform battery testing on START-STOP, regular automotive batteries and system diagnostics. The DHC range of START-STOP testers is a fast, affordable and essential service tool for the growing START-STOP battery business.

### THE NEED FOR STOP-START TESTING?

In response to climate change, governments around the world are increasing environmental regulations on vehicles to improve vehicle fuel economy and reduce emissions. Start-Stop technology helps cars do just that. The engine shuts off when the driver stops for a red light or heavy traffic. There's no idling, no fuel consumed, no emissions. The engine restarts when the driver accelerates away. A leading global battery manufacturer estimates that by the end of 2015, there will be as many as 35 million Start-Stop vehicles globally.

DHC recognises this new markets growth potential and has identified the special testing algorithms required to accurately test the new Enhanced Flooded Batteries (EFB) that are making their way into today's modern Start-Stop vehicles.

- Save time and money by improving the accuracy of battery and electrical diagnostic
- Improve customer service and satisfaction by the proactive testing of batteries and electrical systems
- Increase sales and new customer traffic by being the first to offer Start-Stop battery testing in your business



# DIGITAL BATTERY TESTERS



## SAMPLE PRINTOUT

**DHC**  
 = START STOP =  
 ENHANCED FLOODED  
 SOC: 12.37V  
 RATED: 30SSAE  
 MEASURED: 628SAE  
 GOOD & RECHARGE  
 STATE OF HEALTH  
 100%  
 STATE OF CHARGE  
 76%  
 CLIENT:  
 TEST DATE:  
 BY:

Battery Type

Test Result

SOH

SOC



## BTAMPCLAMP - INDUCTIVE CURRENT MEASURING CLAMP

- Inductive current Amp Clamp accurately measures amperage (charging/discharging) current travelling through cable
- Suits BT2000 and BT2300

Part No.	BTAMPCLAMP	
Electrical Specifications (DC Current)		
Range	200A	600A
Resolution	0.01A	1A
Accuracy	+/- (2%rdg + 2dgts)	
Overload Protection	660Arms	
General Specifications		
Output Jack	3.5mm earphone jack 1mV/A	
Low Battery Indication	Red LED light	
Power Source	Single 9V battery	
Battery Life	100Hr (approx.)	
Operating Temp & Humidity	0C to 50C below 80% Relative Humidity	
Dimensions and Weight	192mm (L) x 64mm (W) x 31mm (H) 240grams (approx.)	
Jaw Opening Diameter	27mm (cable Diameter)	

## BT521 - DIGITAL BATTERY & ELECTRICAL ANALYZER

- Enhanced Flooded Battery (EFB) & AGM test capability
- Complete test report print out
- Detachable cable for easy maintenance
- Multi-protection for over-voltage and reverse polarity
- Suitable for conventional and Start-Stop vehicles
- Suitable for regular flooded, AGM flat plate, AGM spiral, GEL, Enhanced Flooded (EFB) and AGM (Start-Stop) batteries
- Global Testing Standards: CCA, JIS, EN, DIN, IEC and Charging System Testing
- Alternator Testing: Quick Starter Analysis
- Complete analysis in seconds
- Tests batteries internal resistance and details results

Part No.	BT521
Application	6V/12V Battery 12V/24V Starting/Charging
Test Range	40 - 2000 CCA (SAE)
Voltage Range	1.5V DC - 30C DC
Cable Length	200CM
Thermal Printer	Integrated
Display	2 Lines Back-Lit LCD
Operating Temp.	0°C to 50°C

## EASY GRIP CONNECTOR



## BTPROBE - DC VOLTAGE TEST PROBE

- Voltage probe for testing DC voltage
- Comes with interchangeable probe and insulated battery test clip
- Cable length 1.8 metres
- Suits BT2000 and BT2300



# DIGITAL BATTERY TESTERS



## SAMPLE PRINTOUT

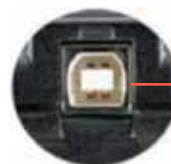
<b>DHC</b>	
TEST REPORT	
= START STOP =	Battery Type
EFB	
VOLTAGE: 12.70V	
RATED: 50SSAE	
MEASURED: 550SAE	
TEMP: 73°F / 23°C	
GOOD & PASS	Test Result
STATE OF HEALTH	SOH
100%	
STATE OF CHARGE	SOC
100%	
CODE	Test Code
RJS220WTA04T0	
CLIENT:	
TEST DATE:	
2012/09/05	
15:31:14	
BY:	Customer Info
DHC SPECIALTY	Setup
ADDRESS	
TEL. NO.	

### BT2000 - DIGITAL BATTERY & ELECTRICAL ANALYZER

- Accurate Single Load, dynamic resistance technology (SLDR) is the basis used by DHC to ensure a true battery condition test result is achieved. The BT2000 places a simulated load test of up to 100 Amps on the battery to accurately reproduce in-vehicle real time behaviour and to alleviate inaccurate test results that may be affected by surface charge, parasitic drain and contact impedance.
- Enhanced Flooded Battery (EFB) & AGM test capability
- Complete, fully customisable test report print out
- Easy link communication to PC via USB
- Includes temperature sensor and temperature compensation features
- Date/time function, test counter and stores previous 1,000 tests
- Detachable cable for easy maintenance
- Multi-protection for over-voltage, temperature and current protection, and reverse polarity and short circuit protection
- Suitable for Conventional and Start-Stop vehicles
- Suitable for regular flooded, AGM flat plate, AGM spiral, GEL, Enhanced Flooded (EFB) and AGM (Start-Stop) batteries
- Global Testing Standards: CCA, JIS, EN, DIN, IEC and Charging System Testing
- Alternator Testing/Quick Starter Analysis
- Complete analysis in sec.
- Optional AMP Clamp and Test Probe connection features to allow further accurate battery and systems testing.
- 2" Printer paper which is compatible with standard credit card machines. Easily available.
- Optional Accessories
  - BTAMPCLAMP Inductive current clamp
  - BTPROBE Voltage test probe



Temperature Sensor



USB Port

Part No.	<b>BT2000</b>
Application	6V/12V Battery 12V/24V Starting/Charging
Test Range	40 - 3,000 CCA (SAE)
Voltage Range	1.5V DC - 30C DC via battery clamp 1.5V DC - 60V DC via test probe
Cable Length	180CM
Thermal Printer	Integrated
Display	4 Lines Back-Lit LCD
Operating Temp.	0°C to 50°C
Dimensions	275 x 135 x 80MM (LxWxH)

# BATTERY MANAGEMENT STATION

## CHARGE, TEST AND JUMP START ALL IN ONE UNIT!

The BT2300 offers fast and easy use for daily workshop use. The included software allows the BT2300 to be connected to a computer via USB and offers complete test reports and data management.

The BT2300 also features:

- High integration for daily workshop use
- Eliminates guesswork with an easy to read intuitive interface
- 50 amp charger will charge batteries quick and efficiently
- 150 amp jump start mode
- 200 amp load testing delivers accurate test results



### BT2300 - BATTERY MANAGEMENT STATION

- Tests 12V batteries and 12V & 24V charging/starting systems
- Full instruction manual
- Results can be printed for customer records
- Easy-to-Read LCD Display eliminates guesswork
- LED Indicators
- Easy link communication to PC via USB
- Stores previous 1000 tests
- Over temperature / current / voltage, reverse polarity and short clamps protection
- 50 Amp fast charging mode
- 150 Amp jump start mode
- 200 Amp load tester
- Optional Accessories
  - BTAMPCLAMP Inductive current clamp
  - BTPROBE Voltage test probe

Part No.	BT2300
AC Voltage	220V ~ 240Vac, 50Hz
Charger	
Application	12V SLI/VRLA/AGM,CAL/CAL & SPIRAL batteries
Maximum Charge Current	0 ~ 50 Amp DC
Engine Start	150 Amp @ 7.2V (5 seconds)
Maximum Charge Voltage	15VDC
Voltmeter & Current Meter	1VDC ~ 60VDC & 0A ~ 1000 Amps
Tester	
Application	12V Batteries 12V & 24V Charging/Starting systems
Operation Range	200 ~ 3000 CCA (SAE)
Rating System	SAE, DIN, EN, IEC, JIS (Battery Type No.)
Automated Load Test	200 Amp (Max.)
Display	Back lit Display, 4 lines 16 characters LCD
Thermal Printer	Built inside
Dimensions (LxWxH)	330mm x 300mm x 200mm

# DIGITAL BATTERY TESTERS



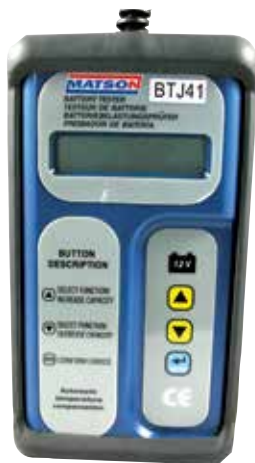
## BT001 - DIGITAL BATTERY TESTER

- Suitable for testing 6V and 12V batteries from 40 to 2000 CCA capacity
- 2 line 16 character display of battery condition
- Will test batteries with charge level down to 1.5V
- 12 months warranty



## BT002 - DIGITAL BATTERY / CHARGING STARTING SYSTEM TESTER

- Suitable for testing 6V and 12V batteries and 12V and 24V starting and charging systems
- 2 line 16 character display of battery condition, cranking and charging voltages, alternator diode condition and more
- Will test batteries with a charge level down to 1.5V
- 12 months warranty



## BTJ41 - INTELLIGENT BATTERY TESTER

- Specially designed for testing 12V, 2AH-200AH batteries
- Suitable for storage batteries with Amp Hour ratings
- The display shows actual volts, actual CCA and percentage of charge capacity. State of Health (SOH) and state of charge (SOC) also indicated
- Powered by a 9V battery (included)
- 12 months warranty



## 50888 - DIGITAL BATTERY TESTER

- 100 amp load tester for 12V batteries only
- This tool duplicates starter motor draw for battery and alternator testing purposes
- Patented digital load control makes this tool especially suitable for use with new generation batteries where incorrect load testing may cause damage
- Digital display of battery and charging system voltage, and test results
- 12 months warranty

## DIGITAL BATTERY TESTERS



### BT222 - DIGITAL BATTERY / CHARGER / STARTING SYSTEM ANALYSER

- Can test batteries from 200 to 1200 CCA
- Will test batteries with a charge level down to 7V
- Full instruction manual
- Easy to operate
- No batteries required
- Micro designed for pocket storage
- 12 months warranty

### MEMORY MINDER



### MS-1E - MEMORY MINDER

- 12 Volt, 4 Amp Memory Minder
- Saves all drivability codes and settings when disconnecting a vehicle's battery power
- Comes with either cigarette lighter attachment cable and OBD II Connection cable
- Circuit breaker fuse to protect against surge and spike.
- 12 months warranty



### 500A2 - CARBON PILE BATTERY LOAD TESTER

- 500 Amp variable load carbon pile tester.
- Colour-coded, temperature compensation pass / fail bands on the voltmeter insure precise battery load test results.
- Separate voltmeter and ammeter provide easy to monitor battery load tests.
- Tests batteries up to 1000CCA
- Fully insulated, heavy duty, colour coded battery clamps & wire leads.
- Tests 12V batteries, alternators, regulators & starters.
- Built in warning beeper.
- 12 months warranty

### REPLACEMENT PAPER ROLLS



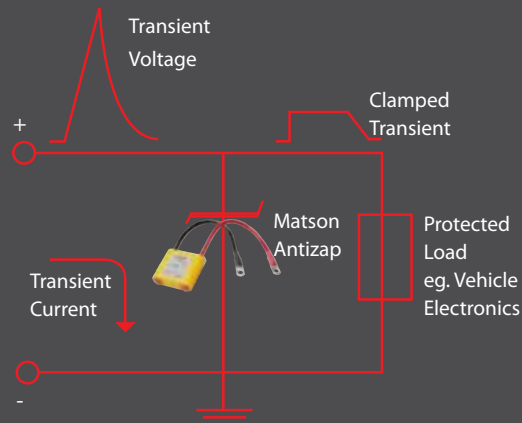
Part No.	BTP	BTP12	BTP2	BTP2B10
Contents	Pack of 2	Pack of 12	Pack of 1	Pack of 10
Suitable for	BT301 and BT521		BT2000	

# THE ANTIZAP SURGE & SPIKE PROTECTION RANGE

## ANTIZAP SURGE PROTECTION

### HOW DOES IT WORK?

Something as simple as a loose battery terminal can introduce a voltage spike into the electronics of a motor vehicle. Jump starting without Antizap protection could result in thousands of dollars in repairs. Connected correctly, Antizap Surge Protection reduces harmful voltage spikes to a level safe for sensitive vehicle electronics.



### SERVICE MINDER



#### MA20121224 - 12-24V SERVICE MINDER

Protects sensitive onboard electronics while the vehicle is being worked on. No need to disconnect the battery when welding when the vehicle is properly earthed.

- Save time and money
- Unique patented design
- Used in the repair market for more than 20 years



#### MA224HD - 12-24V HEAVY DUTY COMMERCIAL

- Green LED indicates CORRECT connection and Antizap® surge protection
- Red LED indicates NO Antizap® surge protection
- Heavy-duty weatherproof and shockproof housing
- Heavy-duty 6 gauge cables
- Crimped, tin plated, heavy gauge solid copper lugs
- Applications: Designed for passenger cars, buses, marine vessels, heavy industrial, agricultural machinery and 4WD vehicles

### JUMPER LEAD UPGRADE

You cannot afford to be jump starting today's vehicles without reliable surge protection. With thousands of Jumper Leads already in the market, hanging in the garage at home or shoved in the corner of the boot, Matson has developed an upgrade unit that simply clips on to existing jumper leads.

#### MA98304 - JUMPER LEAD UPGRADE

- For heavy duty jumper leads 12 and 24 volt protection
- LED's indicate correct polarity and low voltage at donor battery
- Suits cable size 10-15mm diameter





# POWER INVERTERS - PURE SINE WAVE

NOW WITH  
**ANTIZAP**  
PROTECTION

All Matson inverters now feature Antizap protection. Antizap Surge Protection reduces harmful voltage spikes to a level safe for sensitive electronics.

## HOW INVERTERS WORK

A power inverter changes DC power from a battery into conventional AC power that you can use to operate all kinds of devices, electric lights, kitchen appliances, microwaves, power tools, TVs, radios, computers, to name just a few.

You just connect the inverter to a battery, and plug your AC devices into the inverter... and you've got portable power - whenever and wherever you need it.

The inverter draws its power from a 12 Volt battery (preferably deep-cycle), or several batteries wired in parallel. The battery will need to be recharged as the power is drawn out of it by the inverter.

	Part No.	MAI150P	MAI300P	MAI600P	MAI1000P
Power		Pure	Pure	Pure	Pure
	Continuous Power	150 Watt	300 Watt	600 Watt	1000 Watt
	Peak/Surge Power	300 Watt	600 Watt	1200 Watt	2000 Watt
Protection & System Controls	Soft Start	Yes	Yes	Yes	Yes
	Output Overload Cut-Off	Yes	Yes	Yes	Yes
	DC Input High Cut-Off	Yes	Yes	Yes	Yes
	DC Input Low Cut-Off	Yes	Yes	Yes	Yes
	Short Circuit Protection	Yes	Yes	Yes	Yes
	Auto Restart	Yes	Yes	Yes	Yes
	Cooling Fan	Yes	Yes	Yes	Yes
	240 Volt Outlets	1	1	1	2
	Hold Down Brackets	Yes	Yes	Yes	Yes
	Fuses	20A x 1	40A x 1	35A x 1	40A x 1
	Antizap® Surge & Spike Protected	Yes	Yes	Yes	Yes
Physical	Dimensions mm (LxWxH)	210x118x58	230x118x58	330x170x72	390x223x103
	Weight (kg)	1.15kg	1.2kg	3.5kg	5.0kg
Specifications	Input Voltage	11 to 15 Volts DC (12 Volt Systems)			
	Output Voltage	240 Volts AC +/- 5%			
	Frequency	50 Hz			
	Output Wave Form	Pure Sine Wave			
	Efficiency	90%			
	Low Battery Alarm	10.5 ± 0.5 Volts			
	Low Battery Shutdown	10.5 ± 0.5 Volts			
	High Voltage Shutdown	15.0 ± 1.0 Volts			
	Thermal Shutdown	60 Degress C			
	Standby Current Draw	0.3 Amp	0.5 Amp	0.6 Amp	1.3 Amp
	Warranty	12 Months			

# POWER INVERTERS - PURE SINE WAVE

## CHOOSE THE RIGHT INVERTER

The size inverter you choose depends on the watts (or amps) of what you want to run. We recommend you buy a larger model than you think you'll need - at least 10% more than your largest total load.

Example: You want to power a computer with a 17" monitor, some lights, and a radio.

For the example outlined we recommend you purchase a 600 Watt inverter.

Computer	400 Watts
2 - 60 Watt lights	120 Watts
Radio	10 Watts
<b>Total load</b>	<b>530 Watts</b>
Add 10%	583 Watts
<b>Recommended inverter size</b>	<b>600 Watts</b>



### MAI150P – PURE SINE WAVE POWER INVERTER 150W

- Ideal for small appliances such as laptops, CD players & mobile phones
- Plugs into 12V cigarette lighter socket
- Low voltage alarm & cut off
- Internally bonded earth
- Soft start technology
- Run time of 40 minutes @ full load using a 18AH battery



### MAI300P – PURE SINE WAVE POWER INVERTER 300W

- Ideal for small appliances such as fans
- Low voltage alarm & cut off
- Internally bonded earth
- Soft start technology
- Run time of 50 minutes @ full load using a 50 AH battery
- Cooling fan
- Single 240V outlet



### MAI600P – PURE SINE WAVE POWER INVERTER 600W

- Ideal for appliances & power tools
- Low voltage alarm & cut off
- Internally bonded earth
- Soft start technology
- Run time of 25 minutes @ full load using a 50AH battery
- Cooling fan
- Single 240V outlet
- Mounting brackets



### MAI1000P – PURE SINE WAVE POWER INVERTER 1000W

- Ideal for appliances & power tools
- Low voltage alarm & cut off
- Internally bonded earth
- Soft start technology
- Run time of 30 minutes @ full load using a 100AH battery
- Cooling fan
- Twin 240V outlet
- Mounting brackets



# STANDARD SOLID BRASS BATTERY TERMINALS

## QUICK GUIDE

- A complete range of standard and heavy duty battery terminals
- Why brass? Brass terminals are superior to lead, due to lead's toxicity and the superior conductivity, tensile strength and malleability of brass

Matson is Australia's leading supplier of high quality, solid brass battery terminals

MA11



Solderless. Suitable for connecting accessory cables under the heads of the saddle bolts. Saddle is designed to increase cable contact area, minimising resistance., suits cable to 1 Gauge (40mm<sup>2</sup>)

MA14



Solderless. Allows battery to be disconnected without removing terminal from post. Lug stud size 8mm, suits cable to 1 Gauge (40mm<sup>2</sup>)

MA21



Solder/crimp. Cable size: Up to 0 Gauge (50mm<sup>2</sup>). Split side entry barrel ensures easy crimping and access for effective soldering. Tin plated

MA23



Solder/crimp. Cable size: Up to 2 Gauge (35mm<sup>2</sup>). Split side entry barrel ensures easy crimping and access for effective soldering. Tin plated

MA26



Solder/crimp. Cable size: Up to 2 Gauge (35mm<sup>2</sup>). Split side entry barrel ensures easy crimping and access for effective soldering. Tin plated

MA32



Solderless. Cable size: Up to 2 Gauge (35mm<sup>2</sup>). End entry emergency applications

MA33



Solderless. Cable size: Up to 2 Gauge (35mm<sup>2</sup>). High mass ledge designed to suit multiple cable connections. One cable can be connected in end entry hole and secured by the hex headed bolt. Registered design

MA36ST



Solderless. Post size: Suits small Japanese type posts. Cable size: Up to 1 Gauge (40mm<sup>2</sup>). Suitable for connecting accessory cables under the heads of the saddle bolts. Saddle is designed to increase cable contact area, minimising resistance

MA38



Solder/Crimp. Cable size: Up to 0 Gauge (50mm<sup>2</sup>). Thick wall barrel can be drilled to suit 00 Gauge (65mm<sup>2</sup>). Tin plated

MA39



Solderless. Cable size: Up to 0 Gauge (50mm<sup>2</sup>). Thick wall barrel can be drilled to suit 00 Gauge (65sqmm) with two bolt cable connection

MA59



Solder/crimp. Cable size: Up to 1 Gauge (42mm<sup>2</sup>). Bell mouth flange allows for easy cable entry. The flange is designed to house the cable insulation. Suitable for crimp joints

MA100



Solderless. OE replacement terminal - suits Holden, Toyota, Nissan. 8mm stud. Suits cable to 70mm<sup>2</sup>

MA01S



Solder/crimp. Cable size: Up to 0 Gauge (50mm<sup>2</sup>). Heavy gauge side entry barrel suitable for joining two cables. Tin plated

MA01E



Solder/crimp. Cable size: Up to 0 Gauge (50mm<sup>2</sup>). Heavy gauge end entry barrel. Tin plated. Suitable for crimp joints

MA02S



Solder/crimp. Cable size: Up to 00 Gauge (65mm<sup>2</sup>). Heavy gauge side entry barrel suitable for joining two cables. Tin plated

MA03S



Solder/crimp. Cable size: Up to 000 Gauge (85mm<sup>2</sup>). Heavy gauge side entry barrel suitable for joining two cables. Tin plated

MA142



Solderless. Lug stud size: 5/16" (8mm). Allows battery to be disconnected without removing terminal from post

# STANDARD SOLID BRASS BATTERY TERMINALS

- Precision manufacturing process ensures consistency of product
- Available in polished brass finish, or tin plated for enhanced soldering capability
- We also offer a full range of solid copper crimp lugs and crimping tools - see page 36 for lugs and page 43 for crimpers

Uni = Universal    Pos = Positive    Neg = Negative    Pos/Neg = Positive and Negative mix

	Post Type	Blister of 1	Blister of 2	Box of 5	Box of 10	Box of 100
MA11	Uni	MA11BL1	MA11BL2		MA11B10	MA11B100
MA14	Pos/Neg		MA14BL2		MA14B10	MA14B100
	Pos	MA14PBL1			MA14PB10	MA14PB100
	Neg	MA14NBL1			MA14NB10	MA14NB100
MA142	Pos/Neg		MA142BL2		MA142B10	MA142B100
	Pos	MA142PBL1			MA142PB10	MA142PB100
	Neg	MA142NBL1			MA142NB10	MA142NB100
MA21	Pos				MA21PB10	MA21PB100
	Neg				MA21NB10	MA21NB100
MA23	Uni				MA23B10	MA23B100
MA32	Uni	MA32BL1			MA32B10	MA32B100
MA33	Uni	MA33BL1			MA33B10	MA33B100
MA36ST	Pos/Neg		MA36STBL2		MA36STB10	MA36STB100
	Pos	MA36STPBL1			MA36STPB10	MA36STPB100
	Neg	MA36STNBL1			MA36STNB10	MA36STNB100
MA38	Pos				MA38PB10	MA38PB100
	Neg				MA38NB10	MA38NB100
MA39	Pos	MA39PBL1			MA39PB10	MA39PB100
	Neg	MA39NBL1			MA39NB10	MA39NB100
MA59	Uni				MA59B10	MA59B100
MA100	Pos/Neg		MA100BL2		MA100B10	MA100B100
	Pos	MA100PBL1			MA100PB10	MA100PB100
	Neg	MA100NBL1			MA100NB10	MA100NB100
MA01S	Pos			MA01SPB5		MA01SPB100
	Neg			MA01SNB5		MA01SNB100
MA01E	Pos			MA01EPB5		MA01EPB100
	Neg			MA01ENB5		MA01ENB100
MA02S	Pos			MA02SPB5		MA02SPB100
	Neg			MA02SNB5		MA02SNB100
MA03S	Pos			MA03SPB5		MA03SPB100
	Neg			MA03SNB5		MA03SNB100

# HEAVY DUTY SOLID BRASS BATTERY TERMINALS

MA11HD



Solderless. Cable size: Up to 0000 Gauge (105mm<sup>2</sup>). Suitable for connecting accessory cables under the die cast saddle bolt heads

MA14HD



Solderless. Cable stud size: 3/8" (10mm). High performance 304 stainless steel stud and wing nut provides full protection from corrosion and allows battery to be disconnected without removing terminal from post

MA142HD



Solderless. Lug stud size: 3/8" (10mm). Allows battery to be disconnected without removing terminal from post

MA32HD



Solderless. Cable size: Up to 00 Gauge (65mm<sup>2</sup>). End entry emergency applications

	Post Type	Blister of 1	Blister of 2	Box of 5	Box of 100
MA11HD	Uni	MA11HDBL1	MA11HDBL2	MA11HDB5	MA11HDB100
MA14HD	Pos/Neg		MA14HDBL2		MA14HDB100
	Pos	MA14HDPBL1		MA14HDPB5	MA14HDPB100
	Neg	MA14HDNBL1		MA14HDNB5	MA14HDNB100
MA142HD	Pos/Neg		MA142HDBL2		MA142HDB100
	Pos	MA142HDPBL1		MA142HDPB5	MA142HDPB100
	Neg	MA142HDNBL1		MA142HDNB5	MA142HDNB100
MA32HD	Uni	MA32HDBL1		MA32HDB5	MA32HDB100

Uni = Universal Pos = Positive Neg = Negative Pos/Neg = Positive and Negative mix

## TERMINAL PACK



MABTP50

- Selection of 50 popular terminals and 3 pairs of covers
- Contains MA11 x 10, MA14N x 5, MA14P x 5, MA32 x 10, MA36STN x 5, MA36STP x 5, MA100N x 5, MA100P x 5

## BATTERY TERMINAL BOLTS



MA6B10

### Packaged

Box of 10

### Description

Bolt 1" x 1/4"

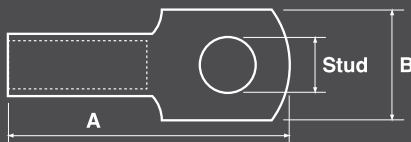
MA6B50

Box of 50

Nut 1/4"

# CABLE LUG RANGE

## SIZE GUIDE:



## LUGS – HEAVY DUTY COMMERCIAL\*

\* Dimensions subject to change without notice

Cable Gauge	Cable Square (mm <sup>2</sup> )	Stud Size (Inches)	Stud Size (mm)	Dims: Length (A)	Width (B)	(C)	(D)	(E)	Packaged: Box of 10	Box of 100
16	1.5	3/16	5	18	8	1.0	9	7	MA1-5B10	MA1-5B100
16	1.5	1/4	6	20	10	0.8	11	7	MA1-6B10	MA1-6B100
13	3	3/16	5	20	10	0.8	11	7	MA2-5B10	MA2-5B100
13	3	1/4	6	20	10	0.8	11	7	MA2-6B10	MA2-6B100
11	4	1/4	6	22	10	1.0	11	9	MA4-6B10	MA4-6B100
11	4	5/16	8	26	12	0.8	15	9	MA4-8B10	MA4-8B100
9	6	1/4	6	27	12	1.0	15	9	MA6-6B10	MA6-6B100
9	6	5/16	8	27	12	1.0	15	9	MA6-8B10	MA6-8B100
7	10	1/4	6	27	12	1.8	14	10	MA10-6B10	MA10-6B100
7	10	5/16	8	29	14	1.5	16	10	MA10-8B10	MA10-8B100
7	10	3/8	10	32	16	1.3	19	10	MA10-10B10	MA10-10B100
6	14	1/4	6	37	11	2.3	14	19	MA16-6B10	MA16-6B100
6	14	3/16	8	39	14	1.7	16	19	MA16-8B10	MA16-8B100
6	14	3/8	10	41	16	1.5	18	19	MA16-10B10	MA16-10B100
3	27	1/4	6	41	13	2.0	18	20	MA25-6B10	MA25-6B100
3	27	3/16	8	41	14	2.4	16	21	MA25-8B10	MA25-8B100
3	27	3/8	10	44	16	2.0	19	21	MA25-10B10	MA25-10B100
2	35	1/4	6	44	15	3.5	17	21	MA35-6B10	MA35-6B100
2	35	5/16	8	44	16	3.0	18	21	MA35-8B10	MA35-8B100
2	35	3/8	10	46	18	2.6	20	21	MA35-10B10	MA35-10B100
2	35	1/2	12	50	20	2.3	24	21	MA35-12B10	MA35-12B100
0	54	1/4	6	44	18	3.1	20	17	MA50-6B10	MA50-6B100
0	54	3/16	8	47	18	4.0	21	20	MA50-8B10	MA50-8B100
0	54	3/8	10	48	18	3.2	20	22	MA50-10B10	MA50-10B100
0	54	1/2	12	52	21	2.7	24	22	MA50-12B10	MA50-12B100
00	67	3/16	8	54	20	3.5	22	23	MA70-8B10	MA70-8B100
00	67	3/8	10	54	21	3.3	24	24	MA70-10B10	MA70-10B100
00	67	1/2	12	54	21	3.3	24	24	MA70-12B10	MA70-12B100
000	95	3/8	10	60	25	3.9	26	27	MA95-10B10	MA95-10B100
000	95	1/2	12	60	25	3.9	26	27	MA95-12B10	MA95-12B100

## LUG ASSORTMENT KIT – HEAVY DUTY COMMERCIAL



### MAGPL1

Battery lug assortment kit. 10 pieces of each of the below:

MA1-5 MA10-6  
MA1-6 MA10-8  
MA2-5 MA10-10  
MA2-6 MA16-6  
MA4-6 MA16-8  
MA4-8 MA16-10  
MA6-6 MA25-8  
MA6-8



### MAGPL2

Battery lug assortment kit containing the following solid copper lugs

10 pieces of: 5 pieces of:  
MA25-8 MA50-10  
MA25-10 MA50-12  
MA35-8 MA70-10  
MA35-10 MA70-12  
MA35-12 MA95-12

## BATTERY CABLES



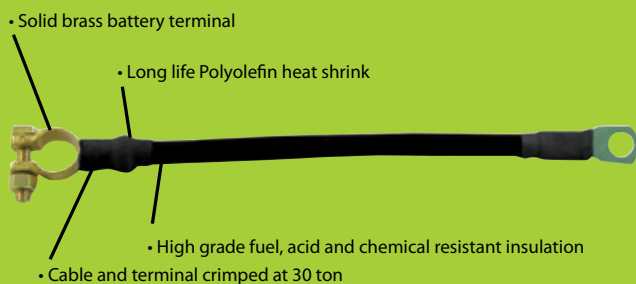
### BATTERY TO STARTER

Length (cm) (inches)	00 Gauge (Black) 65mm <sup>2</sup>	2 Gauge (Black) 35mm <sup>2</sup>
20 8		BC8-2B
25 10		BC10-2B
30 12	BC12-00	BC12-2B
38 15	BC15-00	BC15-2B
46 18	BC18-00	BC18-2B
53 21		BC21-2B
61 24	BC24-00	BC24-2B
69 27		BC27-2B
76 30	BC30-00	BC30-2B
91 36	BC36-00	BC36-2B
106 42	BC42-00	BC42-2B
122 48	BC48-00	BC48-2B
153 60		BC60-2B



### SWITCH TO STARTER

Length (cm) (inches)	00 Gauge (Black) 65mm <sup>2</sup>	2 Gauge (Black) 35mm <sup>2</sup>
30 12	SW12-00	SW12-2B
38 15	SW15-00	SW15-2B
46 18	SW18-00	SW18-2B
61 24	SW24-00	SW24-2B
76 30		SW30-2B
91 36	SW36-00	SW36-2B
100		
106 42		SW42-2B
122 48	SW48-00	SW48-2B



## QUALITY CABLES MANUFACTURED TO THE HIGHEST STANDARD

- A full range of high quality, oxygen-free copper cable from 14mm to 95mm
- Crimped at 10 to 30 ton depending on cable gauge
- High quality insulation and heat shrink



### BATTERY JOINER

Length (cm) (inches)	00 Gauge (Black) 65mm <sup>2</sup>	2 Gauge (Black) 35mm <sup>2</sup>
23 9		BJ9-2
25 10	BJ10-00	BJ10-2
30 12	BJ12-00	BJ12-2
38 15		BJ15-2
46 18	BJ18-00	BJ18-2
15 6		BJ6-2
20 8	BJ8-00	BJ8-2
23 9	BJ9-00	



### BRAIDED COPPER EARTH STRAP

Length (cm) (inches)	Battery Earth Strap	Engine Earth Strap
15 6	ES6	EG6
20 8	ES8	EG8
25 10	ES10	EG10
30 12	ES12	EG12
38 15	ES15	EG15
46 18	ES18	EG18
61 24	ES24	EG24
76 30	ES30	

# BATTERY CABLES

## BULK BATTERY CABLE



Part No.	Cable Gauge	mm <sup>2</sup>	Peak Amps Continuous @ 30°C	Colour	Roll Length	Description
MT5C7B-100	5 CORE		7	BLACK	100	TRAILER CABLE
MT5C7B-30	5 CORE		7	BLACK	30	TRAILER CABLE
MT7C7B-100	7 CORE		5	BLACK	100	TRAILER CABLE
MT7C7B-30	7 CORE		5	BLACK	30	TRAILER CABLE
MBS000B-30	000	95	335	BLACK	30	BATTERY CABLE
MBS00B-30	00	65	292	BLACK	30	BATTERY CABLE
MBS00R-30	00	65	292	RED	30	BATTERY CABLE
MBS0B-30	0	50	246	BLACK	30	BATTERY CABLE
MBS0R-30	0	50	246	RED	30	BATTERY CABLE
MBS1B-30	1	40	210	BLACK	30	BATTERY CABLE
MBS1R-30	1	40	210	RED	30	BATTERY CABLE
MBS2BL-30	2	35	188	BLUE	30	BATTERY CABLE
MBS2B-30	2	35	188	BLACK	30	BATTERY CABLE
MBS2R-30	2	35	188	RED	30	BATTERY CABLE
MBS3B-30	3	25	168	BLACK	30	BATTERY CABLE
MBS3R-30	3	25	168	RED	30	BATTERY CABLE
MBS4B-30	4	20	135	BLACK	30	BATTERY CABLE
MBS4R-30	4	20	135	RED	30	BATTERY CABLE
MBS6B-100	6	14	135	BLACK	100	BATTERY CABLE
MBS6B-30	6	14	103	BLACK	30	BATTERY CABLE
MBS6R-100	6	14	103	RED	100	BATTERY CABLE
MBS6R-30	6	14	103	RED	30	BATTERY CABLE
MBS8B-100	8	7	74	BLACK	100	BATTERY CABLE
MBS8B-30	8	7	74	BLACK	30	BATTERY CABLE
MBS8R-100	8	7	74	RED	100	BATTERY CABLE
MBS8R-30	8	7	74	RED	30	BATTERY CABLE
C13-30	6	14		COPPER	30	BRAIDED EARTH STRAP
MBS2BM-30	2	35	188	BLACK	30	TINNED MARINE 2B&S
MTT51602-100	5 CORE		6	WHITE	100	MARINE TRAILER
MW10		10		ORANGE	30	DI POWER FLEX
MW16		16		ORANGE	30	DI POWER FLEX
MW25		25		ORANGE	30	DI POWER FLEX
MW35		35		ORANGE	30	DI POWER FLEX
MW50		50		ORANGE	30	DI POWER FLEX
TCS4-100		1.84	22	BLACK	100	TWIN SHEATHED 2 CORE FLAT
TCS4-30		1.84	22	BLACK	30	TWIN SHEATHED 2 CORE FLAT
TCS6B-100		4.59	38	BLACK	100	TWIN SHEATHED 2 CORE FLAT
TCS6-30		4.59	38	BLACK	30	TWIN SHEATHED 2 CORE FLAT
TCS6BR-100	6	14	82.4	BLACK/RED	100	TWIN CORE SHEATHED
TCS6BR-50	6	14	82.4	BLACK/RED	50	TWIN CORE SHEATHED
TCS6BR-30	6	14	82.4	BLACK/RED	30	TWIN CORE SHEATHED
TCS8BR-100	8	7	59.2	BLACK/RED	100	TWIN CORE SHEATHED
TCS8BR-50	8	7	59.2	BLACK/RED	50	TWIN CORE SHEATHED
TCS8BR-30	8	7	59.2	BLACK/RED	30	TWIN CORE SHEATHED

See our full range of cable at [www.matson.com.au](http://www.matson.com.au)



# PROFESSIONAL JUMPER LEADS

## WHAT ARE YOU REALLY GETTING?

Many of the Jumper Leads that are available in Australia make questionable claims about their amperage ratings. The three cables pictured are all rated at 200 amp, but as you can see, the Matson lead has far more of the conductive copper than those of our competitors.

Matson jumper leads are made of quality cable, available in both surge protected and non-surge protected varieties, from passenger vehicles to heavy commercial.

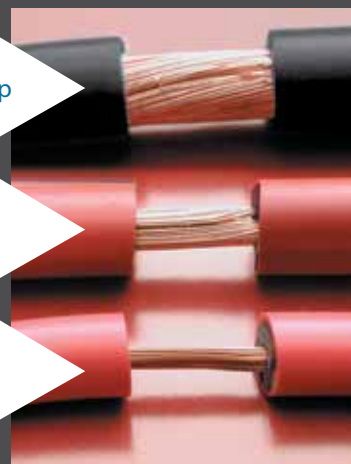
Matson's cable offers:

- Excellent flexural fatigue resistance
- Good electrical properties
- Good tear & abrasion resistance
- Resistance to Low & High Temperatures from -30degC to +140degC
- High impact strength
- Low specific gravity
- Recyclable
- Excellent resistance to chemicals & weathering
- Possess low Compression Set
- Co-injection & co-extrusion with Polyolefins & certain Engineering Plastics

MA354 Series 230 amp

Competitors 200 amp

Competitors 200 amp



- Flexible fine strand copper conductors
- Durable high grade insulation material resists acid, oil and chemicals
- Antizap booster cables are guaranteed to protect against voltage spikes
- Antizap units feature LED indicators to ensure correct connections
- Four function Antizap units feature an LED indicator that warns of weak donor battery
- Used by many international roadside-breakdown associations
- Housebranded for leading international Original Equipment Manufacturers
- Antizap booster cables ensure safety for both users and the vehicles involved
- Antizap protectors are manufactured from the highest quality components

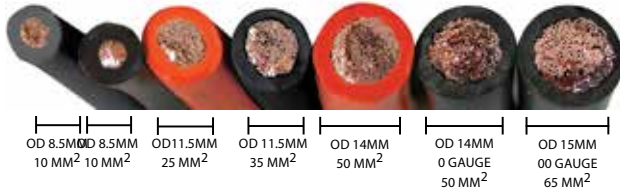
## SPECIFICATIONS

	PEAK Amps	CONTINUOUS Amps @ 30% Duty Cycle	CONTINUOUS Amps @ 60% Duty Cycle	ANTIZAP Available	Application
<b>MA654AZ</b>	1000	530	370	Y	Heavy trucks, earthmoving and mining
<b>MA506AZ</b>	900	435	315	Y	Medium to heavy commercial vehicles
<b>MA354/AZ</b>	750	335	230	Y	Light commercial, 4WD, large V8's, tractor and workshop
<b>MA504AZ</b>	900	450	320	Y	Medium to heavy commercial vehicles
<b>MA254AZ</b>	600	285	200	Y	Light commercial, 4WD, V8's , tractor and workshop
<b>MASS100AZ</b>	400	160	110	Y	4 and 6 cylinder cars



# PROFESSIONAL JUMPER LEADS

## LIFETIME WARRANTY



All Matson jumper leads are supplied in a Heavy Duty D600 material bags to prevent damage to both the leads and interior of your vehicle. All jumper leads are also covered by a LIFETIME WARRANTY.



## STANDARD



Part No.	Cable Gauge	Peak Amps	Length	Features
<b>MA354</b>	35mm <sup>2</sup> 2 Gauge	750	4M	Crimped, heavy gauge solid copper lugs. Fully insulated 600 Amp clamps.



## ANTIZAP



Part No.	Cable Gauge	Peak Amps	Length	Features
<b>MASS100AZ</b>	10mm <sup>2</sup>	400	2.4M	Crimped, fully insulated 400 Amp clamps. Three function Antizap: Correct connection, Incorrect connection, High Speed surge protection. 12V Antizap only



Part No.	Cable Gauge	Peak Amps	Length	Features
<b>MA254AZ</b>	25mm <sup>2</sup>	600	4M	Crimped, heavy gauge solid copper lugs. Fully insulated 600 Amp clamps. Four function Antizap: Correct Connection, Incorrect connection, Low donor battery & High speed surge protection. 12/24V Antizap



Part No.	Cable Gauge	Peak Amps	Length	Features
<b>MA354AZ</b>	35mm <sup>2</sup>	750	4M	Crimped, heavy gauge solid copper lugs. Fully insulated 600 Amp clamps. Four function Antizap: Correct Connection, Incorrect connection, Low donor battery & High speed surge protection. 12/24V Antizap



## PROFESSIONAL JUMPER LEADS



Part No.	Cable Gauge	Peak Amps	Length	Features
<b>MA504AZ</b>	50mm <sup>2</sup>	900	4M	Crimped, heavy gauge solid copper lugs. Fully insulated 600 Amp clamps. Four function Antizap: Correct Connection, Incorrect connection, Low donor battery & High speed surge protection. 12/24V Antizap



Part No.	Cable Gauge	Peak Amps	Length	Features
<b>MA506AZ</b>	50mm <sup>2</sup>	900	6M	Crimped, heavy gauge solid copper lugs. Fully insulated 600 Amp clamps. Four function Antizap: Correct Connection, Incorrect connection, Low donor battery & High speed surge protection. 12/24V Antizap



Part No.	Cable Gauge	Peak Amps	Length	Features
<b>MA654AZ</b>	65mm <sup>2</sup>	1000	4M	Crimped, heavy gauge solid copper lugs. Fully insulated 600 Amp clamps. Four function Antizap: Correct Connection, Incorrect connection, Low donor battery & High speed surge protection. 12/24V Antizap



### CUSTOM JUMPER LEADS

Matson will continue to manufacture custom cables to suit all of your weird and wonderful applications, so please contact us if you need something out of the ordinary and let us quote you on a product to solve your problem.

# TOOLS AND EQUIPMENT

## CRIMPERS



### MA2320 – COPPER TERMINAL AND LUG CRIMPER

- Heavy duty forged steel crimp tool
- Crimps 6mm<sup>2</sup> - 120mm<sup>2</sup>, 460mm handle for maximum crimp pressure
- Crimp jaws rotate for desired gauge
- Overall length 670mm



### MA2310 – COPPER LUG CRIMPER

- Adjustable crimp tool
- Crimps 6mm<sup>2</sup> - 50mm<sup>2</sup> lugs
- Crimp jaws rotate for desired gauge
- Overall length 400mm



### MA2340 – HYDRAULIC CRIMPER 4MM2 - 70MM2

- Comes with 8 sets of interchanged dies to suit lug size 4mm<sup>2</sup> - 70mm<sup>2</sup>
- Overall length 320mm



### MA2330 – HYDRAULIC CRIMPER 6MM2 - 300MM2

- Comes with 10 sets of interchangeable dies to suit lug size 6mm<sup>2</sup> - 300mm<sup>2</sup>
- Overall length 500mm



### MA2341 – MECHANICAL INDENT CRIMPER

- Heavy duty forged steel crimp tool
- Crimps 10mm<sup>2</sup> - 120mm<sup>2</sup>
- Overall length 570mm

# TOOLS AND EQUIPMENT

## BATTERY CARRY HANDLES



### MA2501 - BATTERY CARRY HANDLE HEAVY DUTY

- Battery carrier
- Solid fibre handle and metal scissor grip ensure battery is carried securely
- Easy to use
- Fits most batteries



### MA2502 - BATTERY CARRY HANDLE HEAVY DUTY

- Clamp style battery carrier
- Suitable for batteries up to 30kg
- Fits batteries widths up to 20CM

## TERMINAL AND POST CLEANERS



### MA5182 - HEAVY DUTY WIRE TERMINAL BRUSH



### MA98125 - TERMINAL AND POST CLEANER

- Metal battery terminal and post cleaner



### MA98150 - HYDROMETER

- Color coded float measures specific gravity
- Glass tube does not discolor or tarnish
- Acid resistant rubber bulb and tip



### MA98122 - TERMINAL SPREADER PLIERS

- Forged steel battery terminal spreader pliers and reamer. Spreads terminals for easy fit to posts
- Reamer cleans inner face of terminal for clean connection
- Plastic coated handle for positive grip



### MA98413 - DUAL USB CAR CHARGER ADAPTOR

- Charge your digital device through any cigarette lighter socket
- Compatible with all USB charging cables

## BATTERY MONITOR



### MALED01 - LED BATTERY VOLTMETER

- The MALED01 is a simple and easy to use 12v voltmeter that displays the voltage of the battery system it is connected to. With a clear and bright LED display, this unit allows quick and easy monitoring of battery system voltage. The display will flash to warn of either low or high system voltage. The unit is water resistant (IP65 rating) for outdoor use, and is easy to mount with included double sided tape. The MALED01 comes with 12V cig plug as standard but can also be hard wired if required.

Part No.	MALED01
Input Voltage	12V DC
Display Voltage	7.5V to 19.9V
Accuracy	+/- 0.2%
Waterproof Rating	IP65
Operating Temp Range	-30C to +60C
Low Volt Warning	Less than 11.5V
High Volt Warning	More than 19.8V
Cable Length	100cm
Dimensions	57mm x 29mm x 11mm (LxWxH)
Weight	41 grams

# BATTERY ACCESSORIES

## BATTERY BOXES - AVAILABLE IN BULK BUYS



### MA98115 - SMALL

- Internal dimensions: Length 270mm x Width 180mm x Height 195mm
- Tough polypropylene plastic battery box impervious to battery acid
- Complete with tie down strap and mounting hardware



### MA98116 - MEDIUM

- Internal dimensions: Length 320mm x Width 180mm x Height 195mm
- Tough polypropylene plastic battery box impervious to battery acid
- Complete with tie down strap and mounting hardware



### MA98117 - LARGE

- Internal dimensions: Length 390mm x Width 180mm x Height 195mm
- Tough polypropylene plastic battery box impervious to battery acid
- Complete with tie down strap and mounting hardware

## BATTERY TRAYS



### MA98110

- Battery size: Small 7" (175mm) x 11" (300mm)
- Heavy gauge steel
- Plastic coated
- Universal mounting



### MA98111

- Battery size: Large 7" (175mm) x 13" (320mm)
- Heavy gauge steel
- Plastic coated
- Universal mounting

## BATTERY HOLD DOWN BOLTS



### MA98128

- 8" Battery hold down bolts



### MA98103

- 10" Battery hold down bolts

## BATTERY HOLD DOWN CLAMPS



### MA98100

- Battery width: 5" (127mm)
- Plastic hold down clamp with metal bolts and brass wing nuts



### MA98101

- Battery width: 7" (175mm)
- Plastic hold down clamp with metal bolts and brass wing nuts



### MA98105

- Battery width: 4 1/2" (115mm) to 7" (175mm)
- Adjustable metal hold down clamp with metal bolts and brass wing nuts



# BATTERY ACCESSORIES

## ANDERSON STYLE CONNECTORS

- Impact resistant polycarbonate housing and silver plated copper terminals
- Operating temperature -20° to 105°C

	Part No.	Cable Size	Amp Rating
Complete unit - blister pack of 2	MA2350	8mm <sup>2</sup>	50 Amp
Cover	MA2350-1		
Bulk Buy (126 units per pack)	MA2350-126		
Complete unit - blister pack of 1	MA2360	35mm <sup>2</sup>	175 Amp
Cover	MA2360-1		
Handle	MA2360-2		
Bulk Buy (44 units per pack)	MA2360-44		
Complete unit - blister pack of 1	MA2370	65mm <sup>2</sup>	350 Amp
Cover	MA2370-1		
Handle	MA2370-2		



## TERMINAL COVERS

### MA800C2



- Blister packed pair of end entry battery terminal covers
- One positive (red) and one negative (black) supplied in each pack
- For cable up to 12.7mm diameter
- Protects against shorting out and corrosion of battery terminals

### MA801C2



- Blister packed pair of side entry battery terminal covers
- One positive (red) and one negative (black) supplied in each pack
- Protects against shorting out and corrosion of battery terminals

### MA804C2



- Blister packed lug cover
- Protects lug against shorting out

\*\* All terminal covers also available in bulk

## ANTI-CORROSION BATTERY WASHERS

### MA22FBL1



- Blister packed pair of felt battery washers
- One positive (red) and one negative (green) supplied in each pack
- Washers can be impregnated with oil to assist in protecting terminals from corrosion

MA22FB100 Box of 100 red and green

## BOOSTER CLAMPS



### MA17C - COMMERCIAL

- Fully insulated, thick gauge pressed metal, heavy duty, copper shunt, semi fast-fit lug termination, supplied in pairs
- Rated to 600 Amp

### MA18C - MOTORIST

- Fully insulated, pressed metal, supplied in pairs
- Rated to 400 Amp

## BATTERY CLIPS



### MA98160

- Suits Matson battery chargers, testers, memory minders and general 12V accessories
- Rated to 12V, 50A

### MA98260

- High quality battery clips PK 2
- Suits Matson battery chargers, testers, memory minders and general 12V accessories
- Rated to 12V, 75A

## NOTES

VISIT THE MATSON WEBSITE FOR MORE INFORMATION AND DOWNLOADS  
[WWW.MATSON.COM.AU](http://WWW.MATSON.COM.AU)



**For further information contact Tridon Customer Service:**

#### **AUSTRALIA**

Phone: 1300 362 263  
Fax: 1300 656 006  
Email: [sales@matson.com.au](mailto:sales@matson.com.au)  
**matson.com.au**

#### **New South Wales**

Head Office  
15-27 Derby Street  
Silverwater NSW 2128

#### **Victoria**

1/11 Brough Street  
Springvale VIC 3171

#### **Queensland**

90 Old Toombull Road  
Northgate QLD 4013

#### **Townsville**

1/44-46 Carmel Street  
Garbutt QLD 4814

#### **South Australia**

729B Port Road  
Woodville SA 5011

#### **Western Australia**

1/1 President Street  
Welshpool WA 6106

#### **Tasmania**

77 Howick Street  
Launceston TAS 7250

#### **NEW ZEALAND**

Phone: 0508 874 366  
Fax: 0800 943 480  
Email: [sales@tridon.co.nz](mailto:sales@tridon.co.nz)  
**tridon.co.nz**

#### **Auckland**

3 Tiri Place  
Mt Wellington  
Auckland 1060

#### **Christchurch**

2/200 Annex Road  
Middleton  
Christchurch 8024

**Matson** - Exclusively distributed in Australia and New Zealand by Tridon

© Copyright TRIDON AUSTRALIA PTY. LTD. 2016

A.C.N. 001 398 698 Reproduction of this catalogue in part or full is not permitted without written approval. Illustrations in this catalogue are for identification purposes only and there may be slight variations between the illustration and actual product. Whilst every effort has been made to ensure that the information contained in this catalogue is accurate at the time of printing, TRIDON AUSTRALIA PTY LTD will not accept responsibility should any inaccuracies be contained herein.