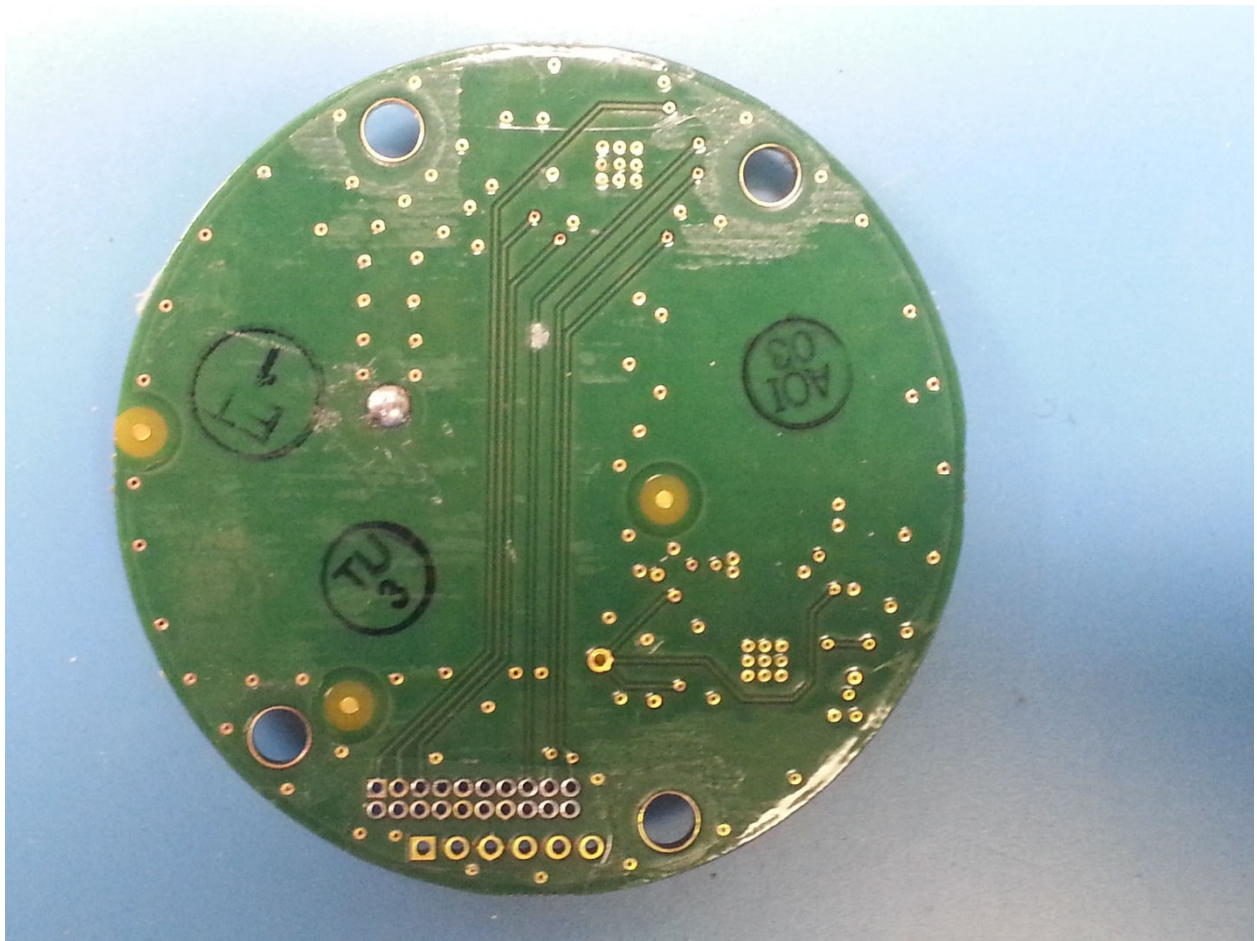


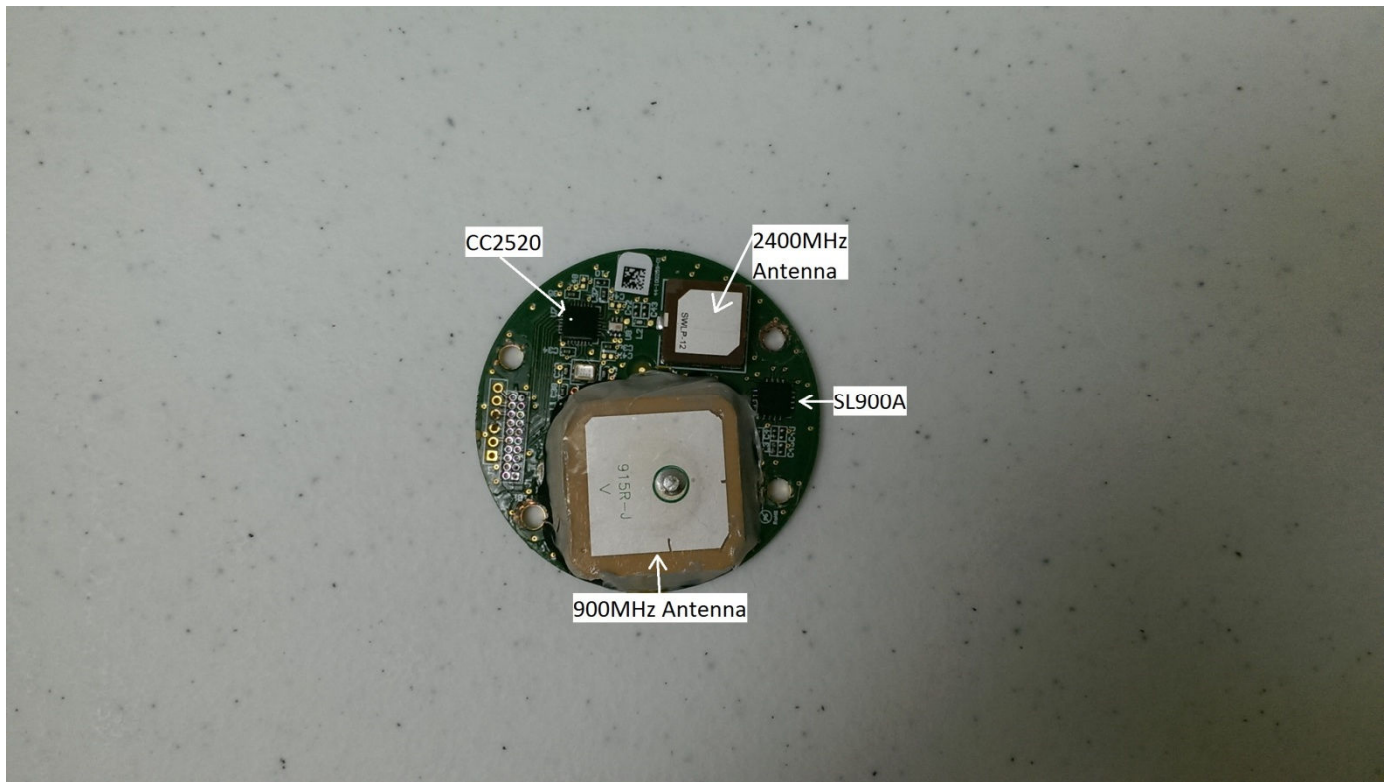
June 15, 2015

Federal Communications Commission  
Authorization and Evaluation Division  
7435 Oakland Mills Road  
Columbia, Maryland 21046

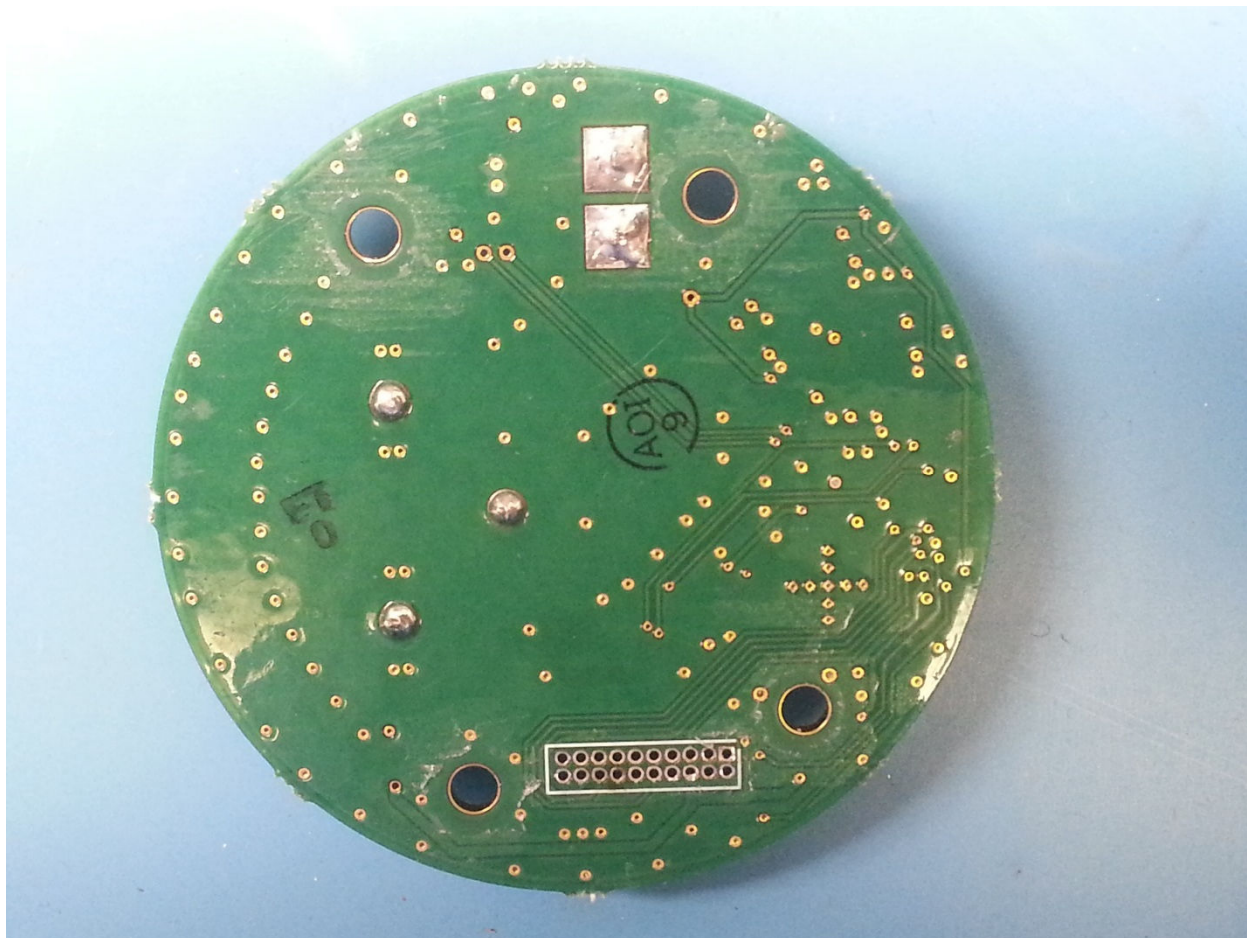
Subject: Oil Sensor Internal Photos



**Image 1: Antenna Board Assembly, Solder Side**



**Image 2: Antenna Board Assembly, Component Side**



**Image 3: Battery Board Assembly, Solder Side**

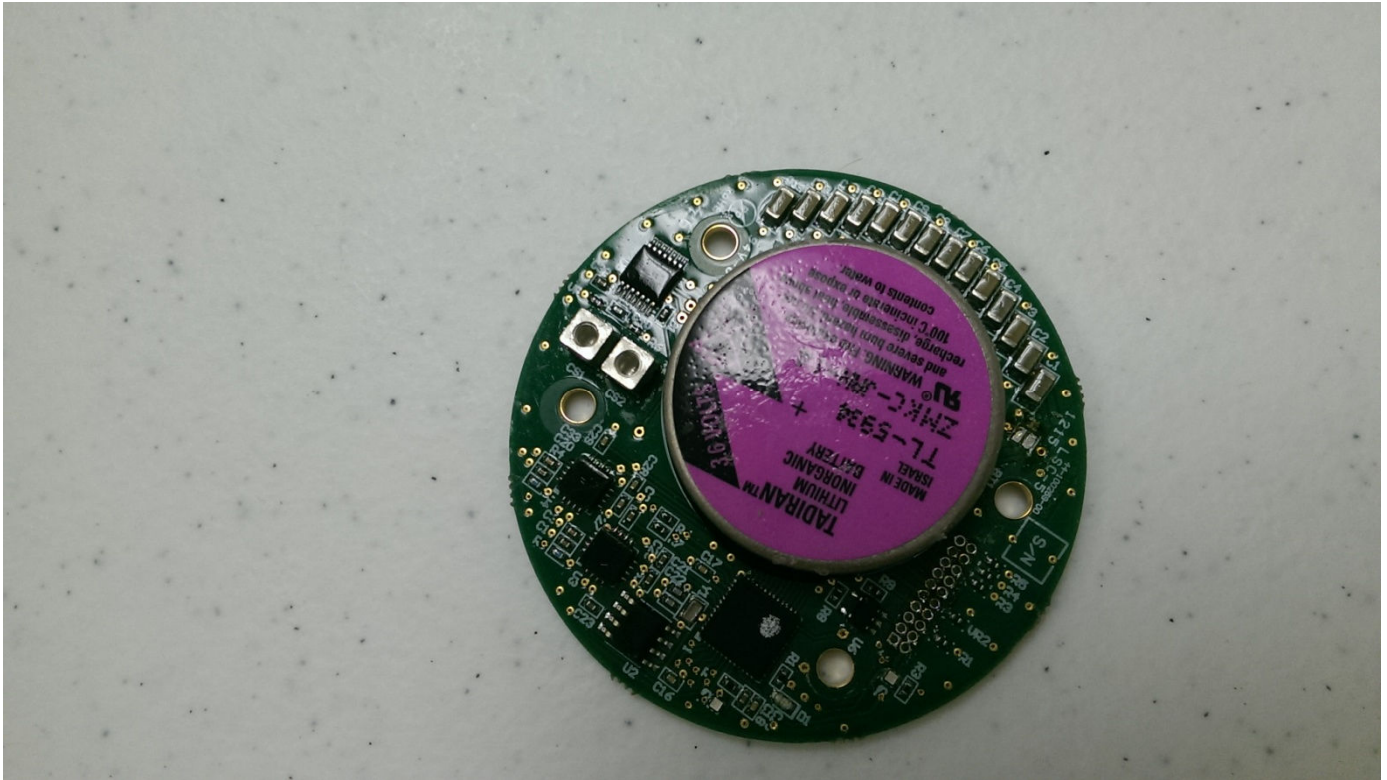


Image 4: Battery Board Assembly, Component Side

**Part Number:** 84A234628G1

**Functional Description:** The sensor takes capacitance, temperature, accelerometer, etc. data readings periodically and communicates them to the gateway if it is in range. An operator can also get in close proximity to the sensor and trigger readings from it with a handheld RFID unit. The units are designed to go on locomotives. RFID in the sensor is passive.

Sincerely,



Brian T. Hemmelman  
Principal Engineer, DarCEO Inc.