

Quick Start Guide

USB 2.0 Portable Laptop Crash Cart KVM Adapter

Model: B032-VU1

The complete Owner's Manual is available on
Tripp Lite's website: tripplite.com/support

El manual completo esta disponible en español en la
página de Tripp Lite: tripplite.com/support

Le manuel complet est disponible en français sur le
site Web de Tripp Lite : tripplite.com/support

Полная русскоязычная версия настоящего руководства
представлена на веб-сайте компании Tripp Lite по
адресу: tripplite.com/support

WARRANTY REGISTRATION

Register your product today and be automatically entered to
win an ISOBAR® surge protector in our monthly drawing!

tripplite.com/warranty



1111 W. 35th Street, Chicago, IL 60609 USA
tripplite.com/support

Copyright © 2021 Tripp Lite. All rights reserved.

Product Features

- USB Console Adapter provides direct laptop-to-computer desktop access
- Compact design with integrated cables makes it perfect for systems administrators on the move; no need for a bulky crash cart
- Supports VGA video resolutions up to 1920 x 1200 @ 60 Hz
- Bi-directional file transfers between local and remote computer
- Virtual media enables file applications, OS patching, software installation and diagnostic testing
- Video recording and image capture of remote desktop
- Instant BIOS-level control
- Automatic Mouse Sync synchronizes local and remote mouse pointers for optimal performance
- Manual Video Settings allow you to adjust settings to optimize picture quality and performance
- Keyboard pass-through support
- On-screen keyboard with multi-language support
- Supports macros for user-defined hotkeys
- Desktop scaling allows you to adjust the size/resolution of the remote desktop window by size or ratio; no need to use scroll bars
- Supports hot-plugging
- Plug-and-play; no software to install

Product Features

- Bus-powered; no external power required
- Firmware upgradeable

System Requirements

- Laptop with an available USB port
- Computer with an available VGA or DVI-I (requires a VGA to DVI adapter) monitor port and a USB port
- Supported laptop console OS: Windows, Linux, and Mac

Note: For Linux and Mac OS, use JavaClient. B032-VU1 firmware version should be at least V1.0.067.

Package Contents

- B032-VU1
- USB 2.0 Mini-B Cable – 6 ft.
- Quick Start Guide

Optional Accessories

- UR030-Series Reversible USB-A to Mini-B Cables
- P120-000 VGA to DVI-A Adapter (M/F)
- P561-Series DVI-D Single-Link Cables

Installation

1. Connect the included USB Mini-B cable between the USB Mini-B port on the unit and an available USB-A port on the laptop.
2. Connect the built-in USB cable to an available USB-A port on the computer you wish to access with the laptop.
3. Connect the built-in VGA cable to an available VGA port on the computer you wish to access with the laptop.
4. When a successful connection between the laptop and the connected computer is established, the Blue LED will illuminate.
5. Upon connection, generic drivers for the product automatically install and it will be recognized as a removable disk drive. A prompt will appear asking if you wish to open it.

Note: *If the prompt does not appear, go to your My Computer screen to access it.*

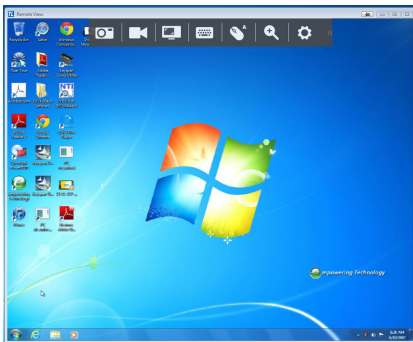
6. To establish a connection with the connected computer, open the drive folder. Two files will appear, the first being Windows AP Client (WinClient) for Windows OS. If the computer is not running Windows, the Java AP Client (JavaClient) will provide remote access.

Note: *To ensure full functionality, run the Windows Client as an administrator.*

7. The client will open a remote session with the connected computer and the remote view window will appear.

Installation





Remote View Window



The Windows client provides a Remote View window with a Control Panel for accessing the connected computer. When the Remote View window opens, the Control Panel is hidden. Access it by moving your mouse pointer over the top center of the screen. The Control Panel includes multiple functions and settings that allow you to manage and control your connection. It can be moved to the top left or top right side of the screen by clicking and dragging on the right side of the panel.




Control Panel



Icon	Description
	Capture – Click to take a snapshot of the remote display. The snapshot image is saved in a directory selected in the Configure Panel screen of the Control Panel's Settings menu. See <i>Section 6.2.7</i> in the owner's manual for details.
	Record – Click to take a video of the remote display. The video file is saved in the same directory as the snapshot images taken with the Capture function. See <i>Section 6.2.7</i> in the owner's manual for details. For details on viewing video files, see <i>Section 7</i> in the owner's manual.
	Video Sync – Click to perform a Video Sync on the remote screen. This detects vertical and horizontal offset values of the remote screen and synchronizes them with the local screen.
	On-Screen Keyboard – Click to display the On-Screen Keyboard. See <i>Section 6.2.5</i> in the owner's manual for details on its use.

Note: Owner's manual is found on www.tripplite.com/support

Control Panel

Icon	Description
	Mouse Sync Settings – Click to toggle between Automatic and Manual mouse sync. When Automatic syncing is selected, an A will appear on the mouse icon. When manual, an M will appear. Automatic Mouse Sync automatically locks in and syncs the local and remote mouse pointers for you, eliminating the need for any manual resyncing. For Manual Mouse Sync, see <i>Section 6.1.2</i> in the owner's manual for details.
	Zoom – Click to zoom in or out on the remote screen. Options are 25%, 50%, 75%, 100%, 1:1 and Full Screen. See <i>Section 6.2.3</i> in the owner's manual for details.
	Control Panel Settings – Click to open a menu that includes some of the same functions as the Control Panel (e.g. Video Sync and Zoom), as well as additional settings and functions for controlling the remote session and maintenance of the unit. See <i>Section 6.2</i> in the owner's manual for details.

Note: Owner's manual is found on www.tripplite.com/support

Specifications

Number of Computer Connections	1
Local Port Connectors	USB Mini-B (Female)
Computer Port Connectors	HD15 (Male), USB-A (Male)
Online LED	Blue
Max Video Resolution	1920 x 1200 @ 60 Hz
Operating Temperature Range	32° to 104°F (0° to 40°C)
Storage Temperature Range	-4° to 140°F (-20° to 60°C)
Relative Humidity	0 to 80% RH, Non-Condensing
Housing Material	Plastic
Unit Weight	0.3 lbs (0.14 kg)
Unit Dimensions	1.875 x 2.125 x 2.875 in. (4.8 x 5.4 x 7.3 cm)

Warranty and Product Registration

3-Year Limited Warranty

TRIPP LITE warrants its products to be free from defects in materials and workmanship for a period of three (3) years from the date of initial purchase. TRIPP LITE's obligation under this warranty is limited to repairing or replacing (at its sole option) any such defective products. To obtain service under this warranty, you must obtain a Returned Material Authorization (RMA) number from TRIPP LITE or an authorized TRIPP LITE service center. Products must be returned to TRIPP LITE or an authorized TRIPP LITE service center with transportation charges prepaid and must be accompanied by a brief description of the problem encountered and proof of date and place of purchase. This warranty does not apply to equipment, which has been damaged by accident, negligence or misapplication or has been altered or modified in any way.

EXCEPT AS PROVIDED HEREIN, TRIPP LITE MAKES NO WARRANTIES, EXPRESS OR IMPLIED, INCLUDING WARRANTIES OF MERCHANTABILITY AND FITNESS FOR A PARTICULAR PURPOSE.

Some states do not permit limitation or exclusion of implied warranties; therefore, the aforesaid limitation(s) or exclusion(s) may not apply to the purchaser.

EXCEPT AS PROVIDED ABOVE, IN NO EVENT WILL TRIPP LITE BE LIABLE FOR DIRECT, INDIRECT, SPECIAL, INCIDENTAL OR CONSEQUENTIAL DAMAGES ARISING OUT OF THE USE OF THIS PRODUCT, EVEN IF ADVISED OF THE POSSIBILITY OF SUCH DAMAGE. Specifically, TRIPP LITE is not liable for any costs, such as lost profits or revenue, loss of equipment, loss of use of equipment, loss of software, loss of data, costs of substitutes, claims by third parties, or otherwise.

Warranty and Product Registration

Product Registration

Visit www.triplite.com/warranty today to register your new Tripp Lite product. You'll be automatically entered into a drawing for a chance to win a FREE Tripp Lite product!*

* No purchase necessary. Void where prohibited. Some restrictions apply. See website for details.

FCC Notice, Class A

This device complies with part 15 of the FCC Rules. Operation is subject to the following two conditions: (1) This device may not cause harmful interference, and (2) this device must accept any interference received, including interference that may cause undesired operation.

Note: This equipment has been tested and found to comply with the limits for a Class A digital device, pursuant to part 15 of the FCC Rules. These limits are designed to provide reasonable protection against harmful interference when the equipment is operated in a commercial environment. This equipment generates, uses, and can radiate radio frequency energy and, if not installed and used in accordance with the instruction manual, may cause harmful interference to radio communications. Operation of this equipment in a residential area is likely to cause harmful interference in which case the user will be required to correct the interference at his own expense. The user must use shielded cables and connectors with this equipment. Any changes or modifications to this equipment not expressly approved by Tripp Lite could void the user's authority to operate this equipment.

Warranty and Product Registration

WEEE Compliance Information for Tripp Lite Customers and Recyclers (European Union)



Under the Waste Electrical and Electronic Equipment (WEEE) Directive and implementing regulations, when customers buy new electrical and electronic equipment from Tripp Lite they are entitled to:

- Send old equipment for recycling on a one-for-one, like-for-like basis (this varies depending on the country)
- Send the new equipment back for recycling when this ultimately becomes waste

Use of this equipment in life support applications where failure of this equipment can reasonably be expected to cause the failure of the life support equipment or to significantly affect its safety or effectiveness is not recommended.

Tripp Lite has a policy of continuous improvement. Specifications are subject to change without notice. Photos and illustrations may differ slightly from actual products.



1111 W. 35th Street, Chicago, IL 60609 USA
triplite.com/support

12

21-05-035 93-3694_RevD