



Product End-of-Life Disassembly Instructions

Product Category: Notebooks and Tablet PCs

Marketing Name / Model
[List multiple models if applicable.]

HP EliteBook x360 830 G5 Notebook PC

Purpose: The document is intended for use by end-of-life recyclers or treatment facilities. It provides the basic instructions for the disassembly of HPI products to remove components and materials requiring selective treatment, as defined by EU directive 2012/19/EC, Waste Electrical and Electronic Equipment (WEEE).

NOTE: Recyclers should sort plastic materials into resin streams for recycling based on the ISO 11469 plastic marking code on the plastic part. For any questions on plastic marking, please contact [HP's Sustainability Contact](#).

1.0 Items Requiring Selective Treatment

1.1 Items listed below are classified as requiring selective treatment.

1.2 Enter the quantity of items contained within the product which require selective treatment in the right column, as applicable.

Item Description	Notes	Quantity of items included in product
Printed Circuit Boards (PCB) or Printed Circuit Assemblies (PCA)	With a surface greater than 10 sq cm	2
Batteries, excluding Li-Ion batteries.	All types including standard alkaline, coin or button style batteries	
Li-Ion batteries. Include all Li-Ion batteries if more than one is provided with the product (such as a detachable notebook keyboard battery, RTC coin cell, etc.)	Battery(ies) are attached to the product by (<i>check all that apply with an "x" inside the "[]"</i>): [x] screws [x] snaps [] adhesive [] other. Explain _____ NOTE: Add detailed removal procedures including required tools in the sections 3.1 and 3.2.	2 (Main battery and RTC battery)
Mercury-containing components	For example, mercury in lamps, display backlights, scanner lamps, switches, batteries	
Liquid Crystal Displays (LCD) with a surface greater than 100 sq cm	Includes background illuminated displays with gas discharge lamps	1
Cathode Ray Tubes (CRT)		
Capacitors / condensers (Containing PCB/PCT)		
Electrolytic Capacitors / Condensers measuring greater than 2.5 cm in diameter or height		
External electrical cables and cords	DC Cable for External Power Supply	
Gas Discharge Lamps		
Plastics containing Brominated Flame Retardants weighing > 25 grams (not including PCBs or PCAs)		

EL-MF877-00
Template Revision C

Page 1

Last revalidation date 09-May-2018

HPI instructions for this template are available at [EL-MF877-01](#)

Item Description	Notes	Quantity of items included in product
already listed as a separate item above)		
Components and parts containing toner and ink, including liquids, semi-liquids (gel/paste) and toner	Include the cartridges, print heads, tubes, vent chambers, and service stations.	
Components and waste containing asbestos		
Components, parts and materials containing refractory ceramic fibers		
Components, parts and materials containing radioactive substances		

2.0 Tools Required

List the type and size of the tools that would typically be used to disassemble the product to a point where components and materials requiring selective treatment can be removed.

Tool Description	Tool Size (if applicable)
#1 screwdriver	Electric cross screwdriver
T5 screwdriver	Electric cross screwdriver

3.0 Product Disassembly Process

3.1 List the basic steps that should typically be followed to remove components and materials requiring selective treatment including the required steps to remove the external enclosure:

1. Follow steps described in Disassembly instruction (file attached)
2. If parts can be removed without using a tool, remove it first
3. Use correct screwdriver and torque value before unlock the screw.
- 4.
- 5.
- 6.
- 7.

3.2 Optional Graphic. If the disassembly process is complex, insert a graphic illustration below to identify the items contained in the product that require selective treatment (with descriptions and arrows identifying locations).

MANUFACTURING PROCESS INSTRUCTIONS

MECHANICAL ASSEMBLY

MODEL : Oreti Okiwi ZhanX

Sub-assembly name:	Oreti Okiwi ZhanX FA disassembly SOP		
Document No.:	Oreti Okiwi ZhanX FA disassembly SOP		
Written by:	廖淞宇	Revision:	0.10
Date:	2019/1/23	Page:	1 of 23

A.Current station version list:

Sta.	Ver.	Sta.	Ver.	Sta.	Ver.	Sta.	Ver.	Sta.	Ver.	Sta.	Ver.
1	0.10	9	0.10	17	0.10						
2	0.10	10	0.10	18	0.10						
3	0.10	11	0.10	19	0.10						
4	0.10	12	0.10	20	0.10						
5	0.10	13	0.10	21	0.10						
6	0.10	14	0.10	22	0.10						
7	0.10	15	0.10								
8	0.10	16	0.10								

B.Version Modify list:

[illegible]

審核： 陳潔 制表： 易秋玲



S O P

Document No.: Oreti Okiwi ZhanX dis-assembly SOP

Station : 1(1/1)

Operation Des : Disassembly D cover

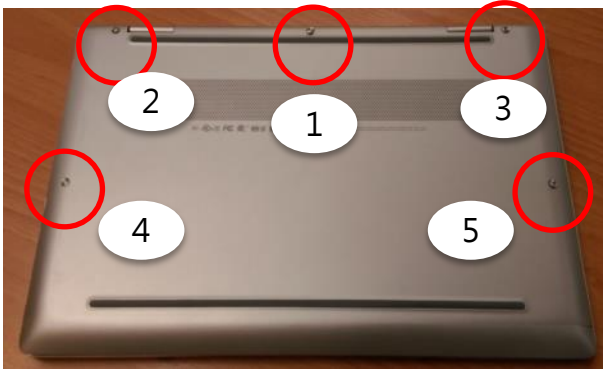
Ver.: 0.10 Edit date: 2019/1/23

Step :

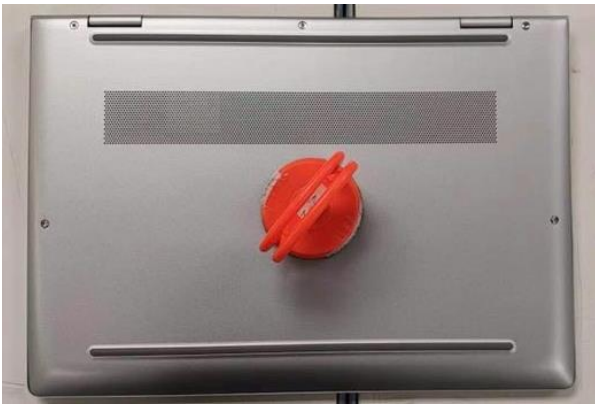
1. Remove 5 screws from D cover

Attention :

❖Torque force : 2.0 ± 0.5 kg/cm



2. Tear down D cover by using sucker · do not disassembly directly. Tear down from the hinge side



Announcements : pls inform OP assistant immediately if any abnormal found

Fixture list	Q' ty	Fixture list	Q' ty
T5 screwdriver	1		

Editor : Qiu-ling.Yi

Publish : IE department



S O P

Document No.: Oreti Okiwi ZhanX dis-assembly SOP

Station : 2(1/1)

Operation Des : Remove LCM/Camera Cable

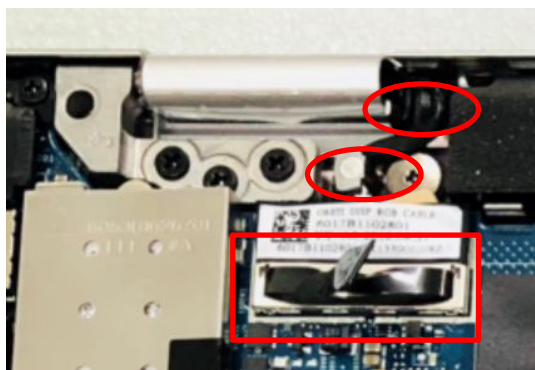
Ver.: 0.10 Edit date: 2019/1/23

Step :

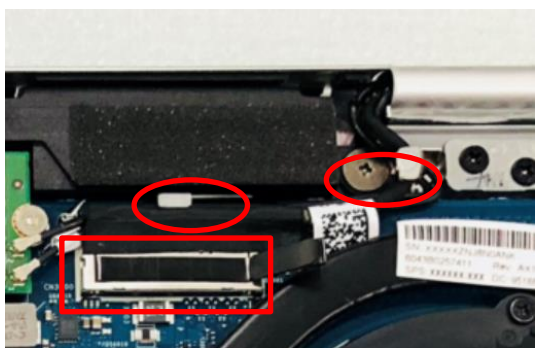
1. Remove battery CNTR (following Picture One)
2. Remove LCM cable CNTR and take out cable (following Picture Two)
3. Remove camera cable CNTR and take out cable (following Picture Three)



Picture One



Picture Two



Picture Three

Announcements : pls inform OP assistant immediately if any abnormal found

Fixture list	Q' ty	Fixture list	Q' ty

Editor : Qiu-ling.Yi

Publish : IE department



S O P

Document No.: Oreti Okiwi ZhanX dis-assembly SOP

Station : 3(1/1)

Operation Des : Dismantle battery

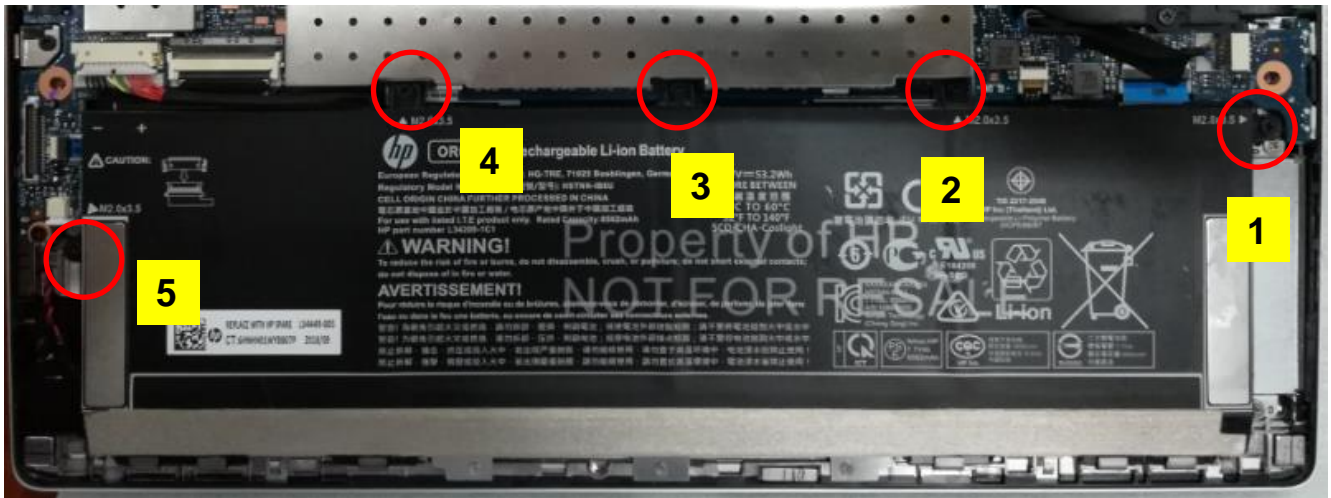
Ver.: 0.10 Edit date: 2019/1/23

Step :

1. Remove 5 PCS battery screws 6052A0051102
2. Dismantle battery

Attention :

❖Torque force : 1.5 ± 0.2 kg/cm



Announcements : pls inform OP assistant immediately if any abnormal found

Fixture list	Q' ty	Fixture list	Q' ty
#1 screwdriver	1		

Editor : Qiu-ling.Yi

Publish : IE department



S O P

Document No.: Oreti Okiwi ZhanX dis-assembly SOP

Station : 4(1/1)

Operation Des : Remove WWAN/WLAN Antenna

Ver.: 0.10 Edit date: 2019/1/23

Step :

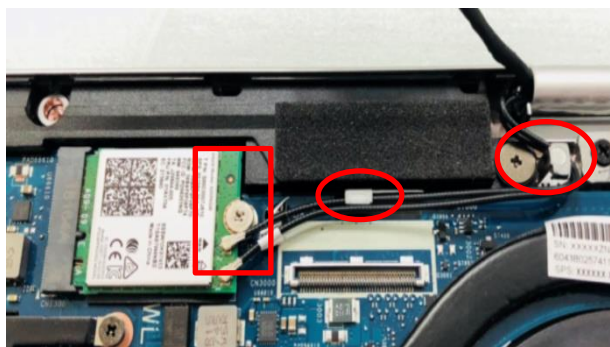
1. Remove WWAN cable CNTR and take out cable (like Picture One)
2. For units without WWAN card , remove tape (like Picture Two)
3. Remove WLAN cable CNTR and take out cable (like Picture Three)



Picture One



Picture Two



Picture Three

Announcements : pls inform OP assistant immediately if any abnormal found

Fixture list	Q' ty	Fixture list	Q' ty

Editor : Qiu-ling.Yi

Publish : IE department



S O P

Document No.: Oreti Okiwi ZhanX dis-assembly SOP

Station : 5(1/1)

Operation Des : Remove WLAN/WWAN card

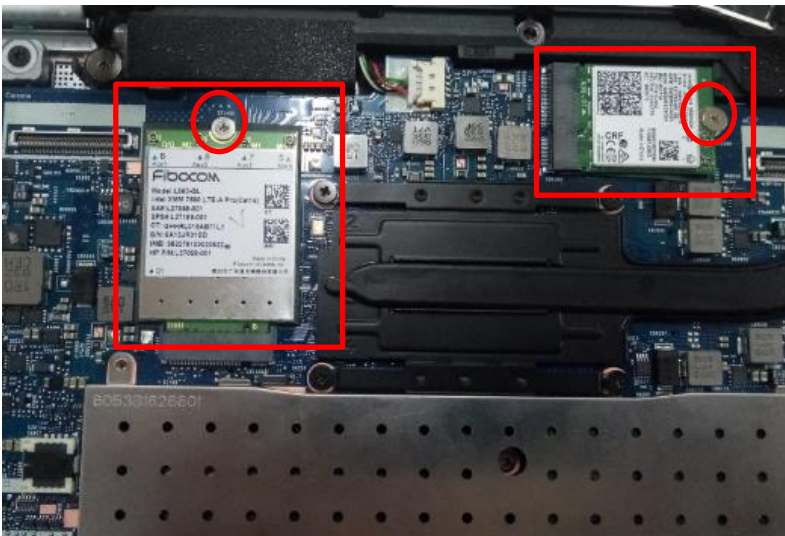
Ver.: 0.10 Edit date: 2019/1/23

Step :

1. Remove 2 PCS screws 6052B0156201 and dismantle WLAN/WWAN card

Attention :

❖Torque force : 1.5 ± 0.2 kg/cm



Announcements : pls inform OP assistant immediately if any abnormal found

Fixture list	Q' ty	Fixture list	Q' ty
#1十字螺絲起子	1		

Editor : Qiu-ling.Yi

Publish : IE department



S O P

Document No.: Oreti Okiwi ZhanX dis-assembly SOP

Station : 6(1/1)

Operation Des : Disassemble SSD

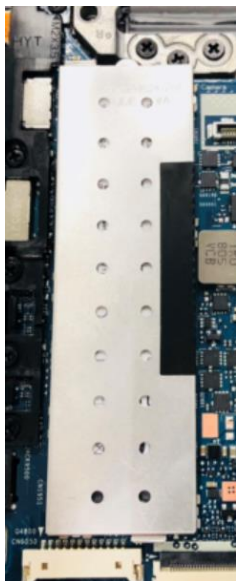
Ver.: 0.10 Edit date: 2019/1/23

Step :

1. Take SSD shielding off MB
2. Dismantle screw*1(6052B0156201) · take SSD off

Attention :

- ❖Twisting force value : 1.5 ± 0.2 kg/cm
- ❖The screws cannot be loose and dropped into the units



Announcements : pls inform OP assistant immediately if any abnormal found

Fixture list	Q' ty	Fixture list	Q' ty
#1 Screwdriver	1		

Editor : Qiu-ling.Yi

Publish : IE department



S O P

Document No.: Oreti Okiwi ZhanX dis-assembly SOP

Station : 7(1/1)

Operation Des : Disassemble DDR

Ver.: 0.10 Edit date: 2019/1/23

Step :

1. Dismantle DDR shielding
screw*2(6052B0302601) · take DDR
shielding off MB
2. Take DDR off the card slot

Attention :

❖Twisting force value : 1.5 ± 0.2 kg/cm



Announcements : pls inform OP assistant immediately if any abnormal found

Fixture list	Q' ty	Fixture list	Q' ty
#1 Screwdriver	1		

Editor : Qiu-ling.Yi

Publish : IE department



S O P

Document No.: Oreti Okiwi ZhanX dis-assembly SOP

Station : 8(1/1)

Operation Des : Disassemble Thermal

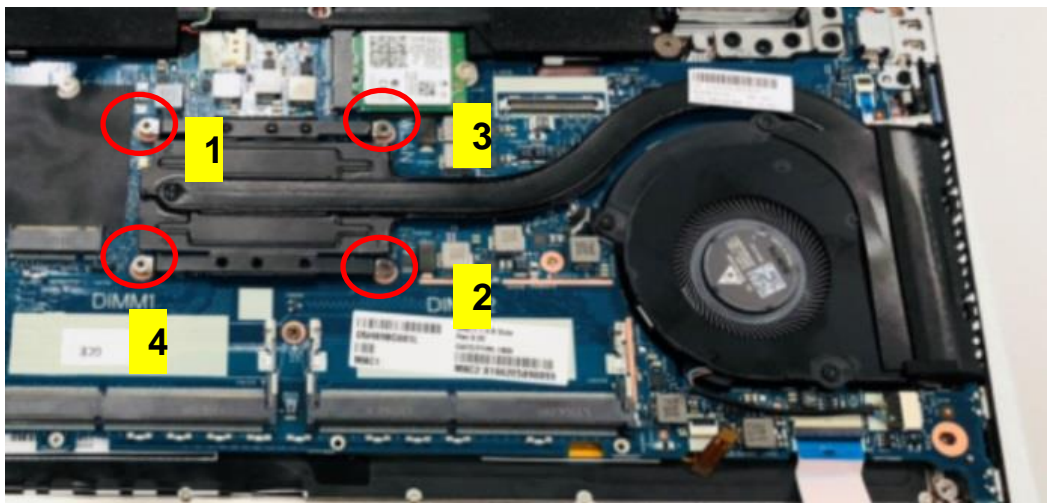
Ver.: 0.10 Edit date: 2019/1/23

Step :

1.Disassemble screw*4 from sheet iron, take Thermal off

Attention :

- ❖Twisting force value : 1.5 ± 0.5 kg/cm
- ❖Fixing screws up and down vertically



Thermal module	
6043B0257401	Telta
6043B0257411	CCI

Announcements : pls inform OP assistant immediately if any abnormal found

Fixture list	Q' ty	Fixture list	Q' ty
#1 Screwdriver	1		

Editor : Qiu-ling.Yi

Publish : IE department



S O P

Document No.: Oreti Okiwi ZhanX dis-assembly SOP

Station : 9(1/1)

Operation Des : Disassemble FAN

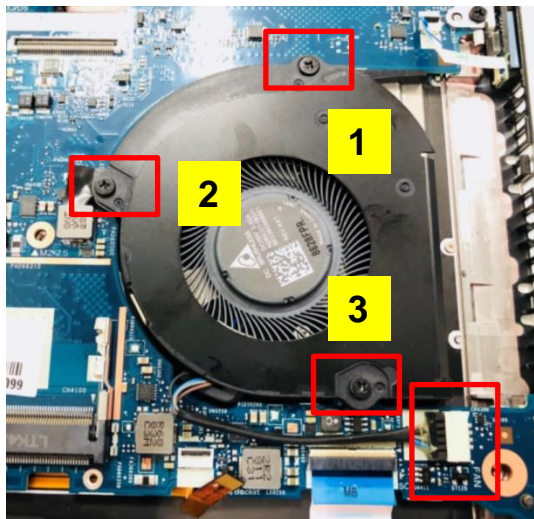
Ver.: 0.10 Edit date: 2019/1/23

Step :

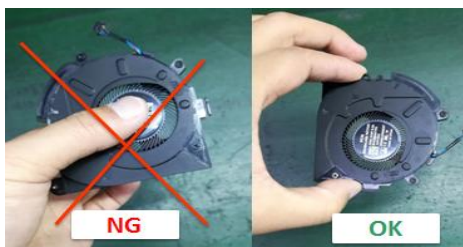
1. Disassemble screw*3 on the Fan
2. Plug out Fan CNTR · take Fan off

Attention :

❖Twisting force value : 2.0 ± 0.5 kg/cm



Fan	
6033B0068001	Fan(Telta)
6033B0067901	Fan(SUNON)



Announcements : pls inform OP assistant immediately if any abnormal found

Fixture list	Q' ty	Fixture list	Q' ty
#1 Screwdriver	1		

Editor : Qiu-ling.Yi

Publish : IE department



S O P

Document No.: Oreti Okiwi ZhanX dis-assembly SOP

Station : 10(1/1)

Operation Des : Disassemble I/O frame

Ver.: 0.10 Edit date: 2019/1/23



Step :

1. Disassemble screw *5(6052A0051102) ,
take I/O frame (6051B1287201) off .

Attention :

❖Twisting force value : 1.5 ± 0.2 kg/cm

Announcements : pls inform OP assistant immediately if any abnormal found

Fixture list	Q' ty	Fixture list	Q' ty
#1 Screwdriver	1		

Editor : Qiu-ling.Yi

Publish : IE department



S O P

Document No.: Oreti Okiwi ZhanX dis-assembly SOP

Station : 11(1/1)

Operation Des : Disassembly USB BRKT

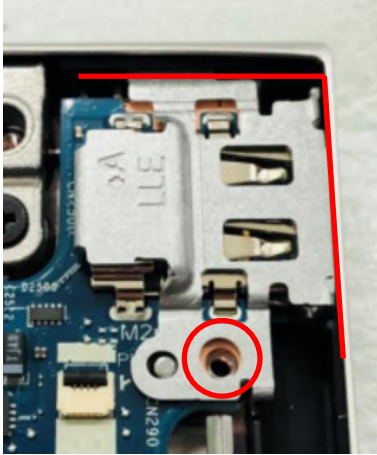
Ver.: 0.10 Edit date: 2019/1/23

Step :

1. Dismantle USB screw*1(6052A0051102)
· take USB BRKT out
2. Plug out Speaker CNTR

Attention :

❖Twisting force value : 1.5 ± 0.2 kg/cm



Announcements : pls inform OP assistant immediately if any abnormal found

Fixture list	Q' ty	Fixture list	Q' ty
Screwdriver #1	1		

Editor : Qiu-ling.Yi

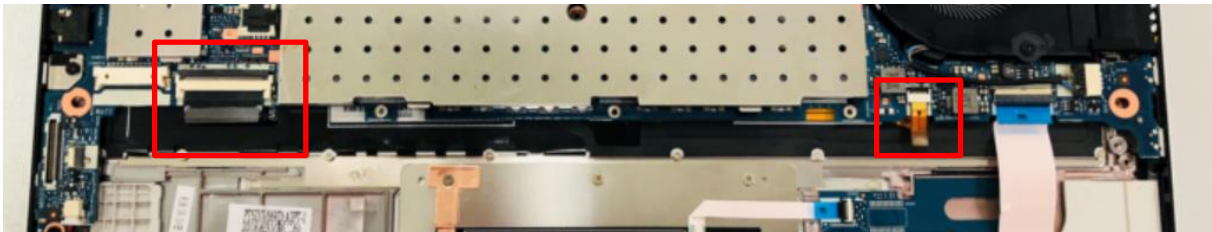
Publish : IE department



S O P

Document No.: Oreti Okiwi ZhanX dis-assembly SOP Station : 12(1/1)
Operation Des : Disassembly KB FPC Ver.: 0.10 Edit date: 2019/1/23

- Step :
1. Open CNTR · take out KB FFC&BL FFC



Announcements : pls inform OP assistant immediately if any abnormal found

Fixture list	Q' ty	Fixture list	Q' ty



S O P

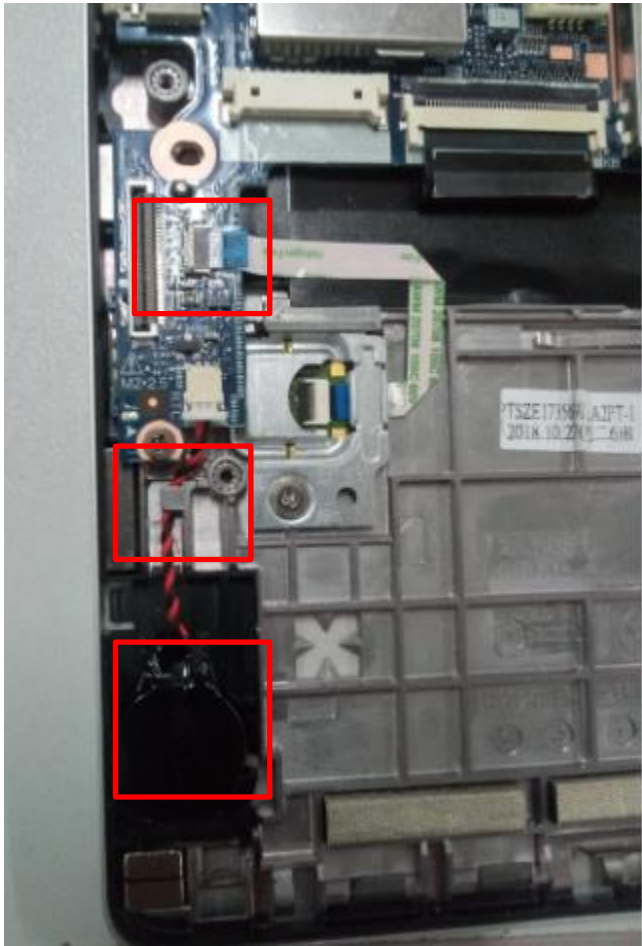
Document No.: Oreti Okiwi ZhanX dis-assembly SOP
Operation Des : Disassemble small Battery

Station : 13(1/1)

Ver.: 0.10 Edit date: 2019/1/23

Step :

1. Dismantle small battery, take battery from the hook
2. Take out Finger FFC



Announcements : pls inform OP assistant immediately if any abnormal found

Fixture list	Q' ty	Fixture list	Q' ty



S O P

Document No.: Oreti Okiwi ZhanX dis-assembly SOP

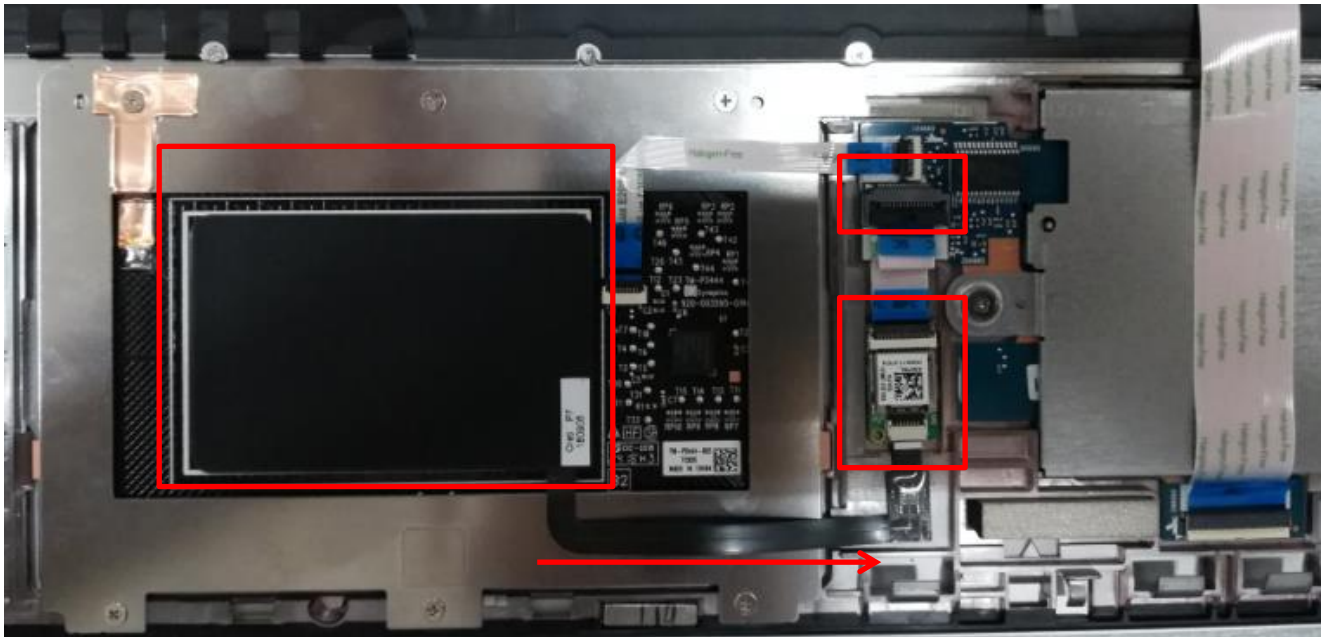
Station : 14(1/1)

Operation Des : Disassemble NFC

Ver.: 0.10 Edit date: 2019/1/23

Step :

1. Dismantle NFC Module



Announcements : pls inform OP assistant immediately if any abnormal found

Fixture list	Q' ty	Fixture list	Q' ty

Editor : Qiu-ling.Yi

Publish : IE department



S O P

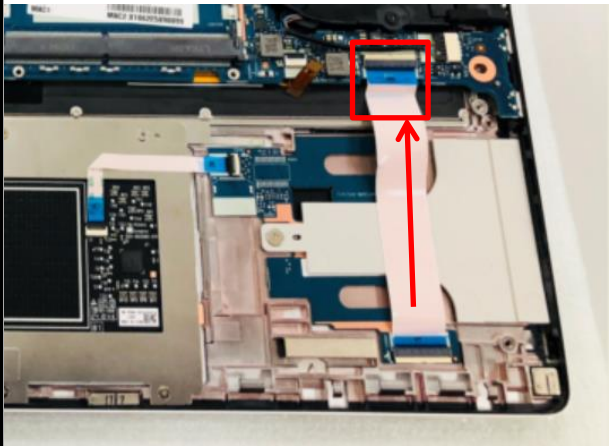
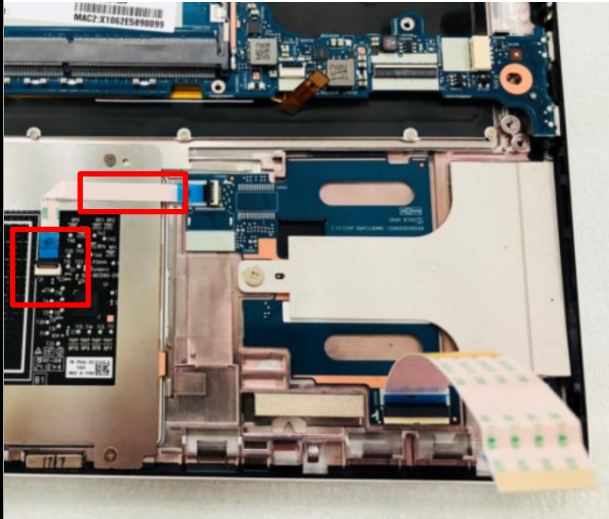
Document No.: Oreti Okiwi ZhanX dis-assembly SOP
Operation Des : Disassembly SC/B FFC

Station : 15(1/1)

Ver.: 0.10 Edit date: 2019/1/23

Step :

1. Dismantle all FFC shown as picture



Announcements : pls inform OP assistant immediately if any abnormal found

Fixture list	Q' ty	Fixture list	Q' ty



SOP

Document No.: Oreti Okiwi ZhanX dis-assembly SOP

Station : 16(1/1)

Operation Des : Disassemble MB

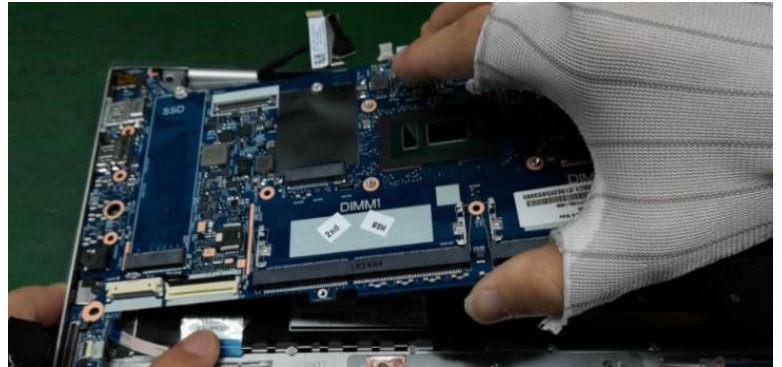
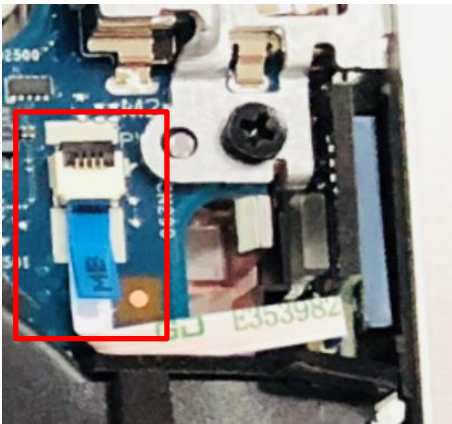
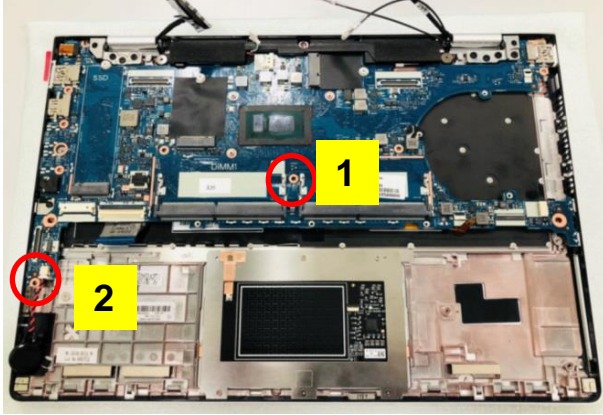
Ver.: 0.10 Edit date: 2019/1/23

Step :

1. Disassemble the MB screw*2pcs (6052B0302601)
2. Disassemble the power FFC
3. Take out the MB

Attention :

❖Twisting force value : 1.5 ± 0.2 kg/cm



Announcements : pls inform OP assistant immediately if any abnormal found

Fixture list	Q' ty	Fixture list	Q' ty
Screwdriver #1	1		

Editor : Qiu-ling.Yi

Publish : IE department



S O P

Document No.: Oreti Okiwi ZhanX dis-assembly SOP

Station : 17(1/1)

Operation Des : Disassemble Smart card/B

Ver.: 0.10 Edit date: 2019/1/23

Step :

For SMC

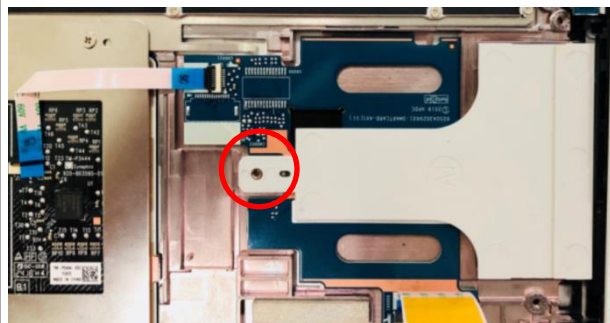
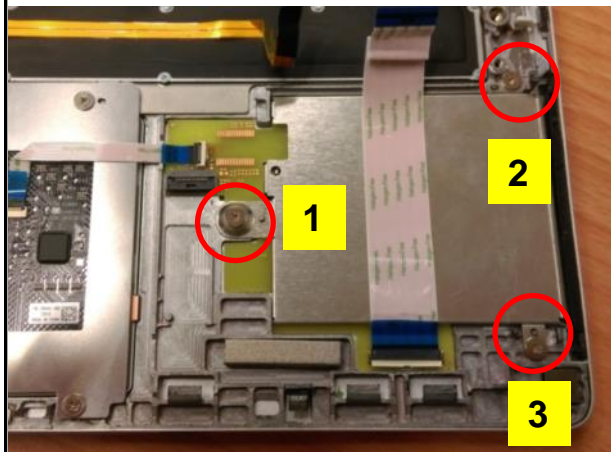
1. Disassemble the screw
(6052B0156201)*3 · take out smart card

For dummy SMC

1. Disassemble the screw
(6052B0156201)*1 · take out the dummy
and smart card

Attention :

❖Twisting force value : 1.5 ± 0.2 kg/cm



Announcements : pls inform OP assistant immediately if any abnormal found

Fixture list	Q' ty	Fixture list	Q' ty
Screwdriver #1	1		

Editor : Qiu-ling.Yi

Publish : IE department

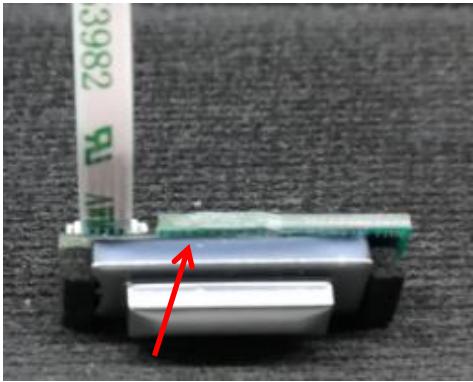
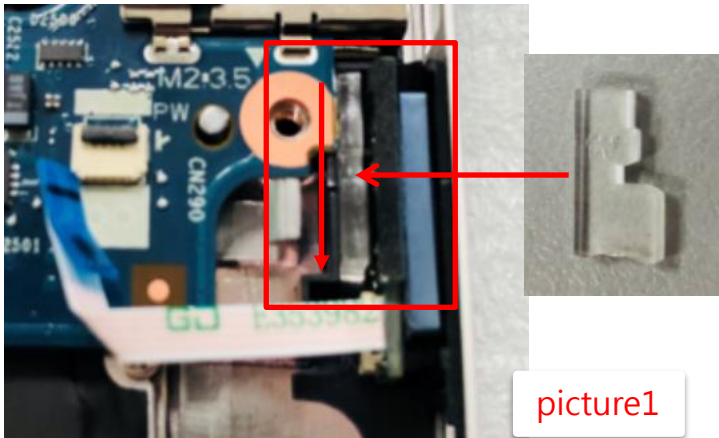


S O P

Document No.: Oreti Okiwi ZhanX dis-assembly SOP
Operation Des : Disassemble Power/B
Station : 18(1/1)
Ver.: 0.10 Edit date : 2019/1/23

Step :

1. Take out the power board PC card firstly , and then take out the power board



Announcements : pls inform OP assistant immediately if any abnormal found

Fixture list	Q' ty	Fixture list	Q' ty



S O P

Document No.: Oreti Okiwi ZhanX dis-assembly SOP

Station : 19(1/1)

Operation Des : Disassemble Speaker

Ver.: 0.10 Edit date: 2019/1/23

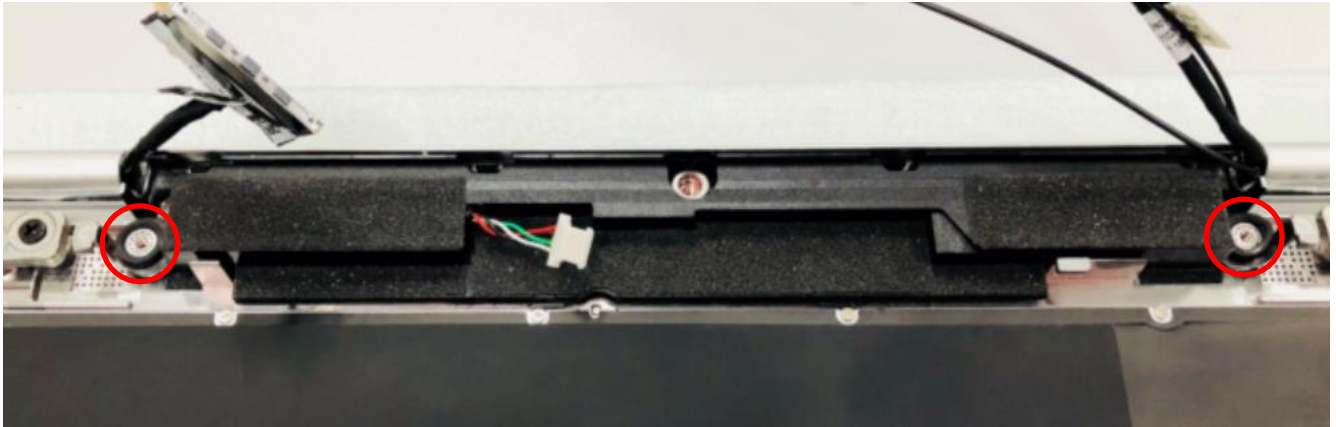
Step :

1. Disassemble the screws on the speakers (6052B0156301)*2 · then take out the speaker

Speaker	
6039B0096301	Speaker (FG)
6039B0096401	Speaker(立訊)

Attention :

- ❖Twisting force value : 1.5 ± 0.2 kg/cm
- ❖The screws can't be loose and the screws should not be dropped into the units



Announcements : pls inform OP assistant immediately if any abnormal found

Fixture list	Q' ty	Fixture list	Q' ty
Screwdriver #1	1		

Editor : Qiu-ling.Yi

Publish : IE department



S O P

Document No.: Oreti Okiwi ZhanX dis-assembly SOP

Station : 20(1/1)

Operation Des : Disassemble finger printer

Ver.: 0.10 Edit date : 2019/1/23

Step :

For finger pinter module

1. Disassemble the screw*1(6052B0156201),take down the FP bracket(6053B1627401) as picture 1
2. Take out the FP as picture 2



picture1

For dummy finger pinter

- 1.Put the dummy FP into the top aslant, disassemble the screw*1(6052B0156201),take out the dummy as picture 3

Attention :

❖Twisting force value : 1.5 ± 0.2 kg/cm



picture2



Picture 3

Announcements : pls inform OP assistant immediately if any abnormal found

Fixture list	Q' ty	Fixture list	Q' ty
Screwdriver #1	1		

Editor : Qiu-ling.Yi

Publish : IE department



S O P

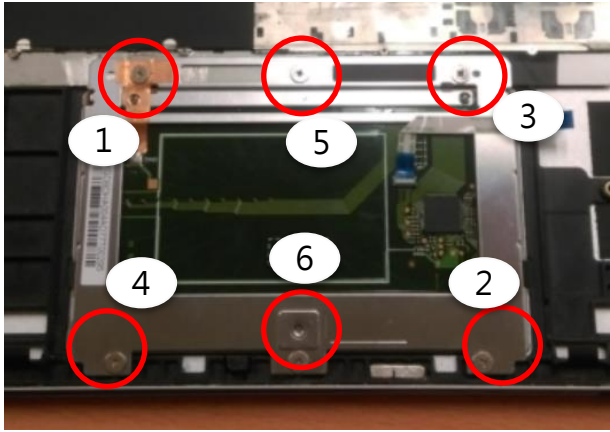
Document No.: Oreti Okiwi ZhanX dis-assembly SOP

Station : 21(1/1)

Operation Des : Disassemble Click pad

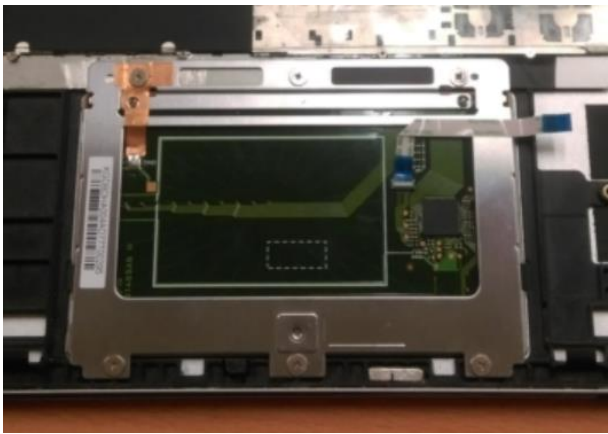
Ver.: 0.10 Edit date: 2019/1/23

Step :



1. Disassemble the Touch pad
screws*6(6052B0118001) firstly,then take out the click pad

Attention :
❖Twisting force value : 1.0 ± 0.5 kg/cm



Announcements : pls inform OP assistant immediately if any abnormal found

Fixture list	Q' ty	Fixture list	Q' ty
Screwdriver #1	1		



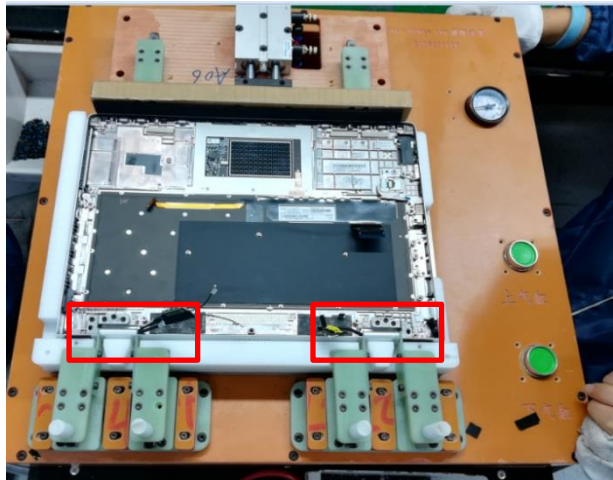
S O P

Document No.: Oreti Okiwi ZhanX dis-assembly SOP

Station : 22(1/1)

Operation Des : Disassemble hinge up

Ver.: 0.10 Edit date: 2019/1/23

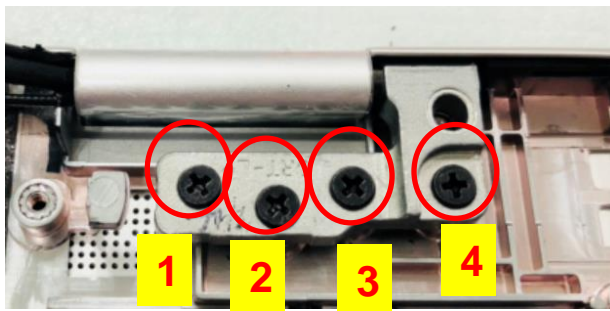
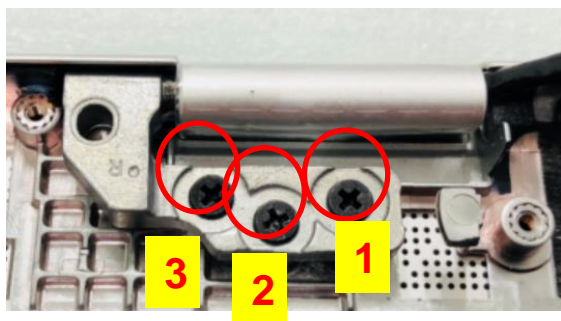


Step :

1. Keep the hinge up in 90 angle
2. Disassemble the left hinge screws*3(6052A0003501)
3. Disassemble the right hingescrews *4(6052A0003501)
4. Take down hinge up

Attention :

❖Twisting force value : 3.0 ± 0.5 kg/cm



Announcements : pls inform OP assistant immediately if any abnormal found

Fixture list	Q' ty	Fixture list	Q' ty
Screwdriver #1	1		

Editor : Qiu-ling.Yi

Publish : IE department