

深圳市亿圣邦科技有限公司 样品承认书

SPECIFICATION FOR APPROVAL

公司名称 (客户填写) : 深圳亿莱顿科技有限公司
物料代码 (客户填写) : _____
规格型号 (客户填写) : SW3293(137 主板)
承认日期 (客户填写) : _____
供应商名称 (SLK 填写) : 深圳市亿圣邦科技有限公司
供应商规格型号 (SLK 填写) : WIFI 1:SLK-YLD-T3010-L-330I-B

承 认 签 章					
供 应 商 承 认 (SLK 填写栏)			深圳市亿莱顿科技有限公司		
工 程 师	品 质	结 构	工 程 师	审 核	批 准
罗涛	陈揭兴	刘才亮	刘建红		
批准			盖章签署		
日 期	2024-3-28		日 期		
批示: <input type="checkbox"/> 接受 <input type="checkbox"/> 有条件接受					
备注 (客户填写) :					

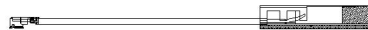
供应商名称: 深圳市亿圣邦科技有限公司
供应商地址: 深圳市宝安区深圳前湾硬科技产业园 C 栋 101
电 话: 18025305599 电 话: 18666299104

WIFI 1 Antenna (T3010)

1.Explanation of Product number :

S L K - Y L D - T 3 0 1 0 - L - 3 3 0 I - B

1 2 3 4 5



Product Code:

(1) Customer:

YLD:亿莱顿

(2) Project:

T3010:SK-T3010 (WIFI antenna)

(3) Welding Position

L: Left

(4) Cable Length:

330I: 330*1.13MM一代端子

(5)Cable Color

B:Black

2. Features

*Stable and reliable in performances

*Compact size

*RoHS compliance

3. Applications

* IEEE802.11 (b/g/n)

* Hand-held devices when WIFI (802.11b/g/n) functions are needed

4. Description

Holy bond's FPC antenna series are specially designed for WIFI (802.11b/g/n) applications. Based on Holy bond's proprietary design and processes, this FPC antenna has excellent stability and sensitivity to consistently provide high signal reception efficiency.

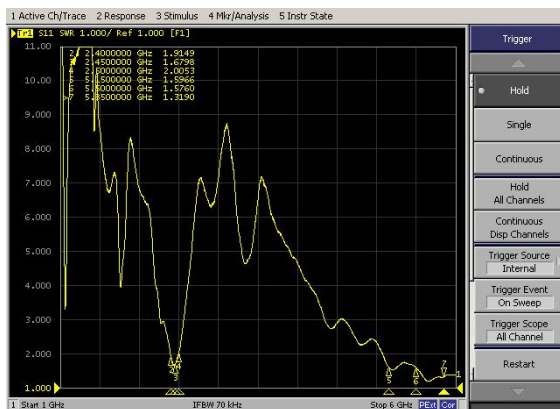
5. Electrical Specifications

5-1

Characteristics	Specifications	Unit
Outline Dimensions	30x10.95x 4.0 T=0.3MM	mm
Center Frequency	2400-2500 5150-5850	GHz
Bandwidth(under-10dB return loss)	130min	MHz
VSWR	5max	

5.2

VSWR

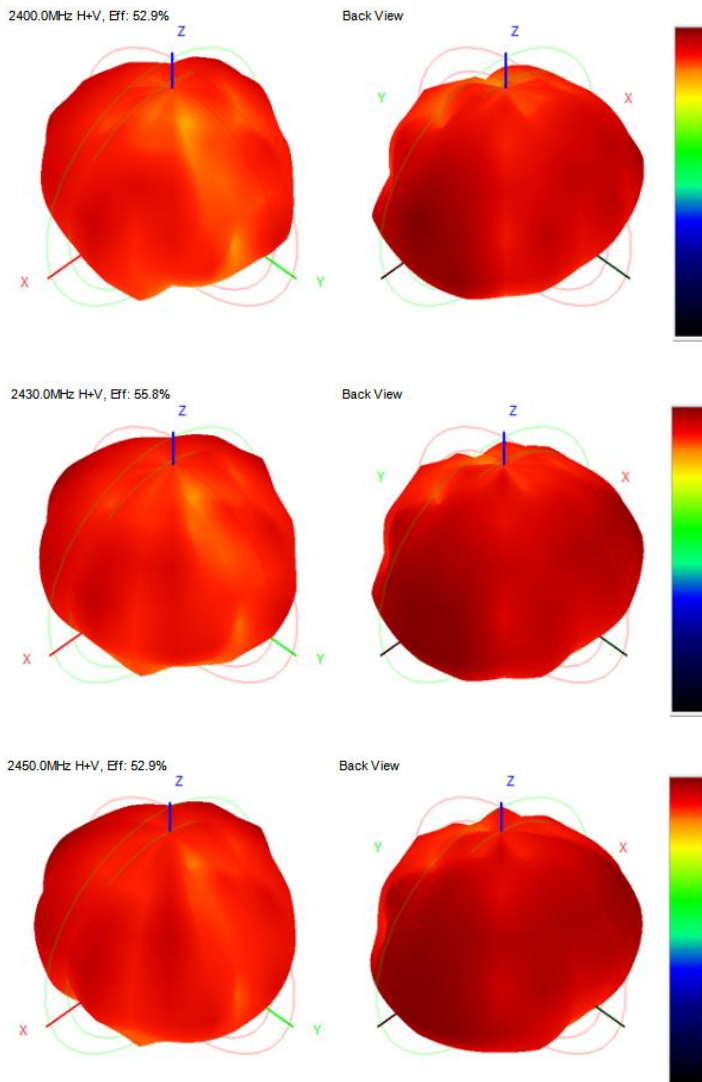


S11

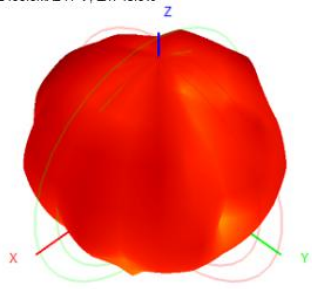


5-3.WIFI 1 Antenna Gain/Efficiency/Radiation Pattern of 3D

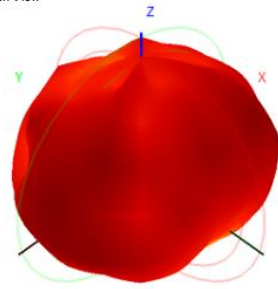
Frequency (MHz)	Efficiency (dBi)	Gain (dBi)	Efficiency (%)
2400.0	-2.76	0.87	52.94
2410.0	-2.72	0.78	53.48
2420.0	-2.31	0.87	58.77
2430.0	-2.54	1.46	55.75
2440.0	-2.49	1.34	56.39
2450.0	-2.77	0.96	52.86
2460.0	-2.79	0.93	52.55
2470.0	-3.21	1.55	47.74
2480.0	-3.47	1.28	44.98
2490.0	-3.45	1.19	45.22
2500.0	-3.75	1.98	42.20
5150.0	-3.31	1.23	46.62
5250.0	-3.64	1.56	43.27
5550.0	-3.48	1.32	44.86
5750.0	-4.23	0.40	37.78
5850.0	-3.69	1.30	42.80



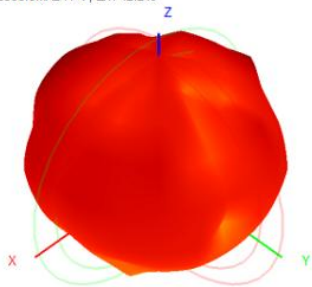
2480.0MHz H+V, Eff: 45.0%



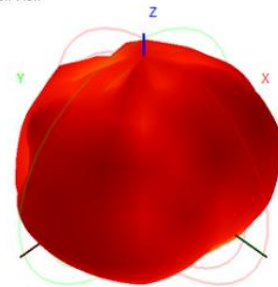
Back View



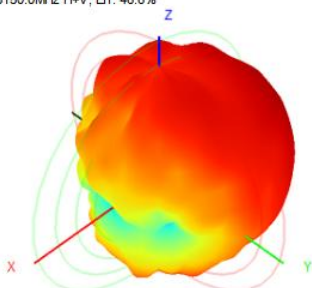
2500.0MHz H+V, Eff: 42.2%



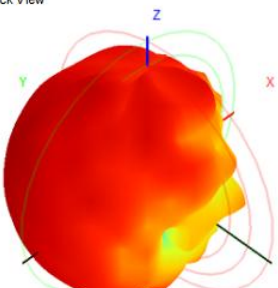
Back View



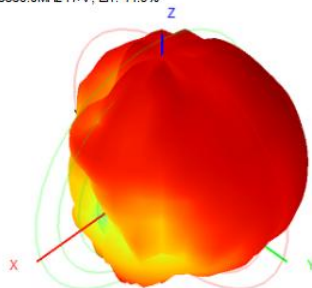
5150.0MHz H+V, Eff: 46.6%



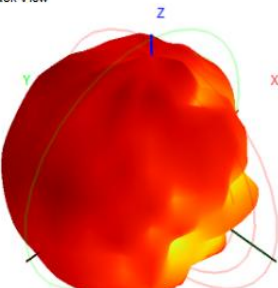
Back View



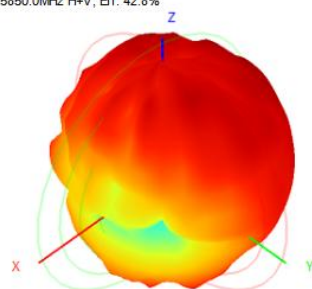
5550.0MHz H+V, Eff: 44.9%



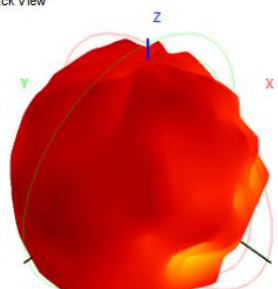
Back View



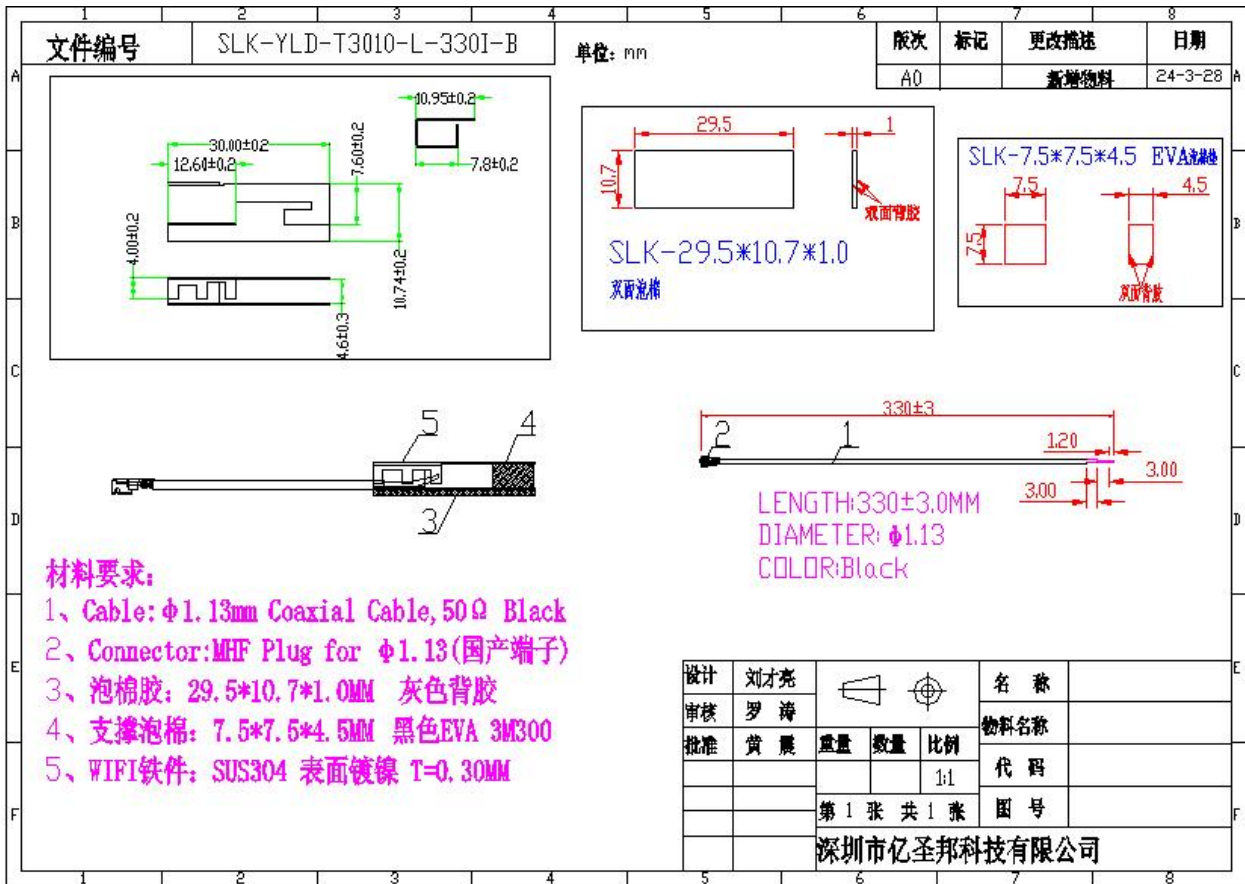
5850.0MHz H+V, Eff: 42.8%



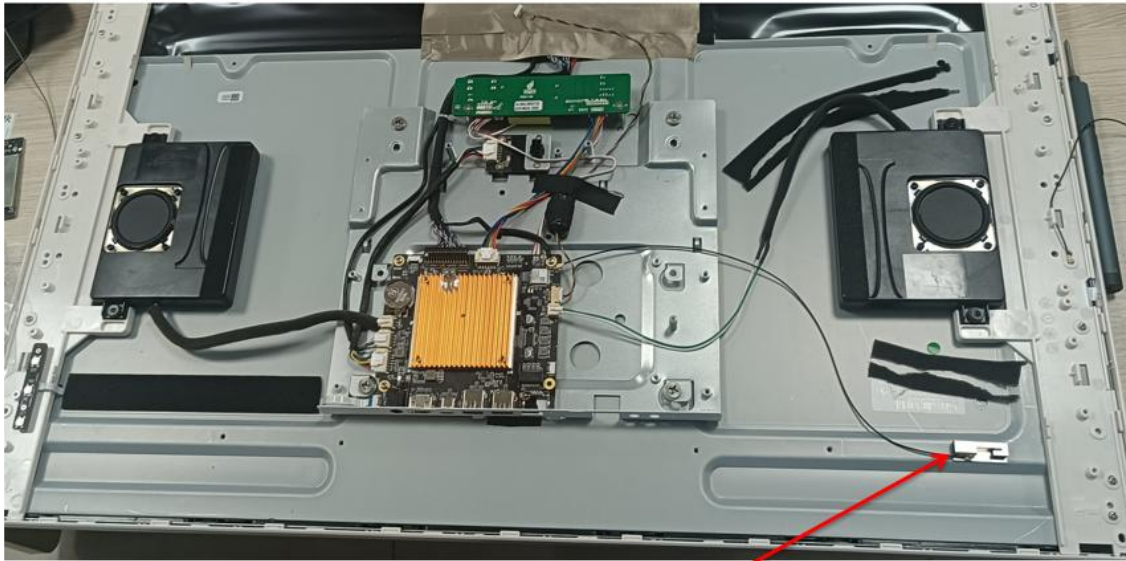
Back View



6. Antenna Dimensions (unit: mm)



7. Antenna Picture



WiFi1天线

WiFi 天线